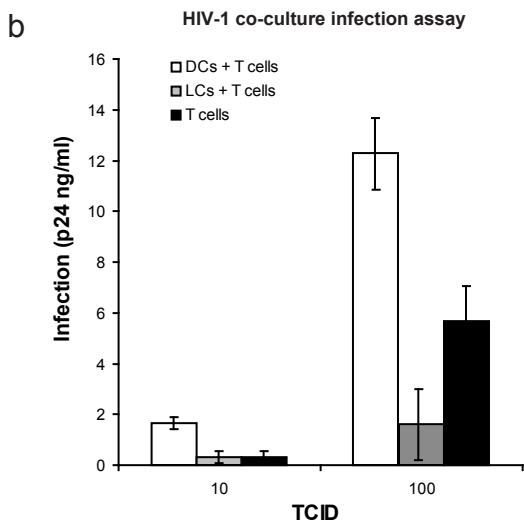
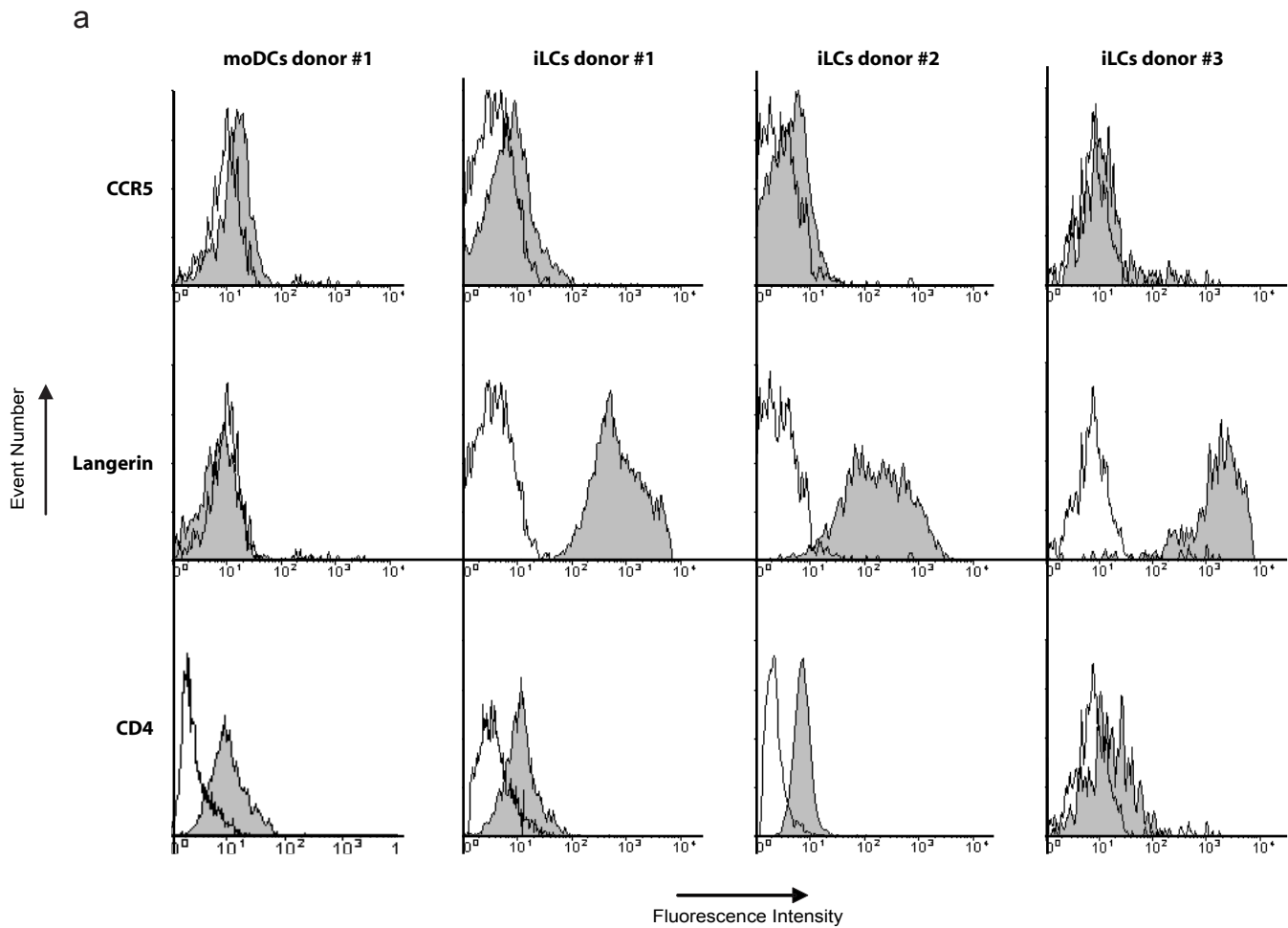


Supplementary Figure 2. de Witte et al.



Supplementary Figure 2. Immature LCs inhibit T cell infection. a. Immature LCs express low levels of CCR5 and CD4 and high levels of Langerin. Freshly isolated LCs were stained for HIV-1 (co)-receptors CD4, CCR5 and Langerin and analysed by flow cytometry. Unfilled histograms represent isotype-control and filled histogram specific antibody staining. b. APCs (100,000) were incubated with HIV-1JR-CSF (TCID 10-moi 0.0001 (0,11 ng p24) and 100-moi 0.001(1,1 ng p24)) for 30 minutes before activated CD4+ T cells (200,000) were added. Viral replication was monitored by HIV-1 p24 ELISA in supernatant at day 7. Error bars represent S.D of triplicates; n=3 donors (#1-3).