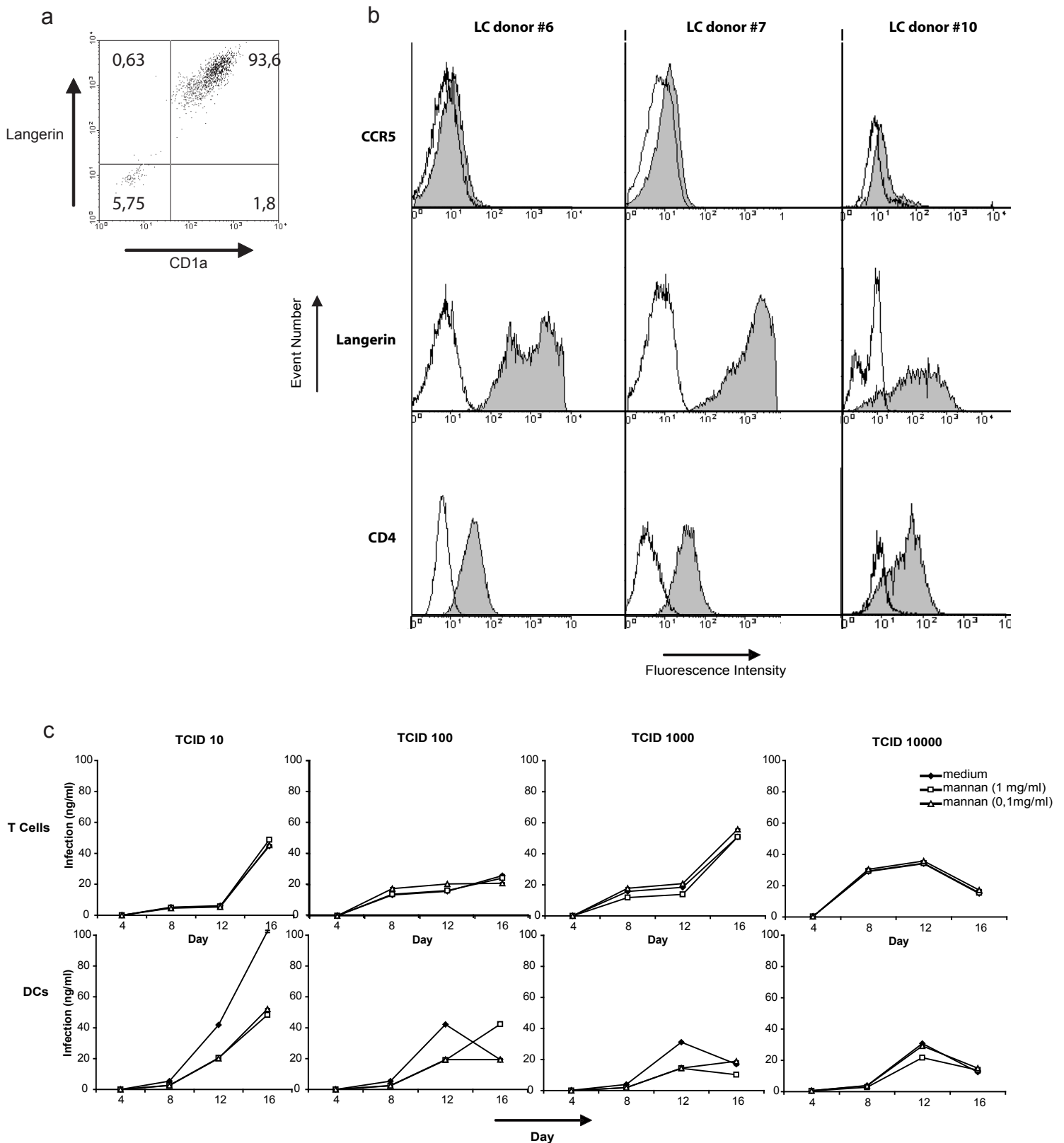


Supplementary Figure 4. de Witte et al.



Supplementary Figure 4. Primary emigrant LCs resemble immature isolated LCs. a,b. Primary emigrated LCs isolated without enzymatic treatment were stained for LC marker CD1a, HIV-1 (co)-receptors CD4, CCR5 and Langerin. Unfilled histograms represent isotype-control and filled histogram specific antibody staining. The percentages are depicted in the quadrants of the dotplot. **c.** moDCs (50.000) were pulsed with HIV-1JR-CSF (TCID 100-moi 0.02 (0,21 ng p24) unless depicted otherwise) and after washing away unbound virus, activated CD4+ T cells were added. Cells were pre-incubated with medium, mannan (1mg/ml or 0.1 mg/ml) for 30 minutes before addition of the virus. Viral replication was determined by the HIV-1 p24-capsid ELISA in supernatant. To control the infection of the transmission assay in **Fig. 3c**, activated CD4+ T cells used in **Fig. 3c** were infected with different concentrations of HIV-1JR-CSF and supernatant was collected of different days.