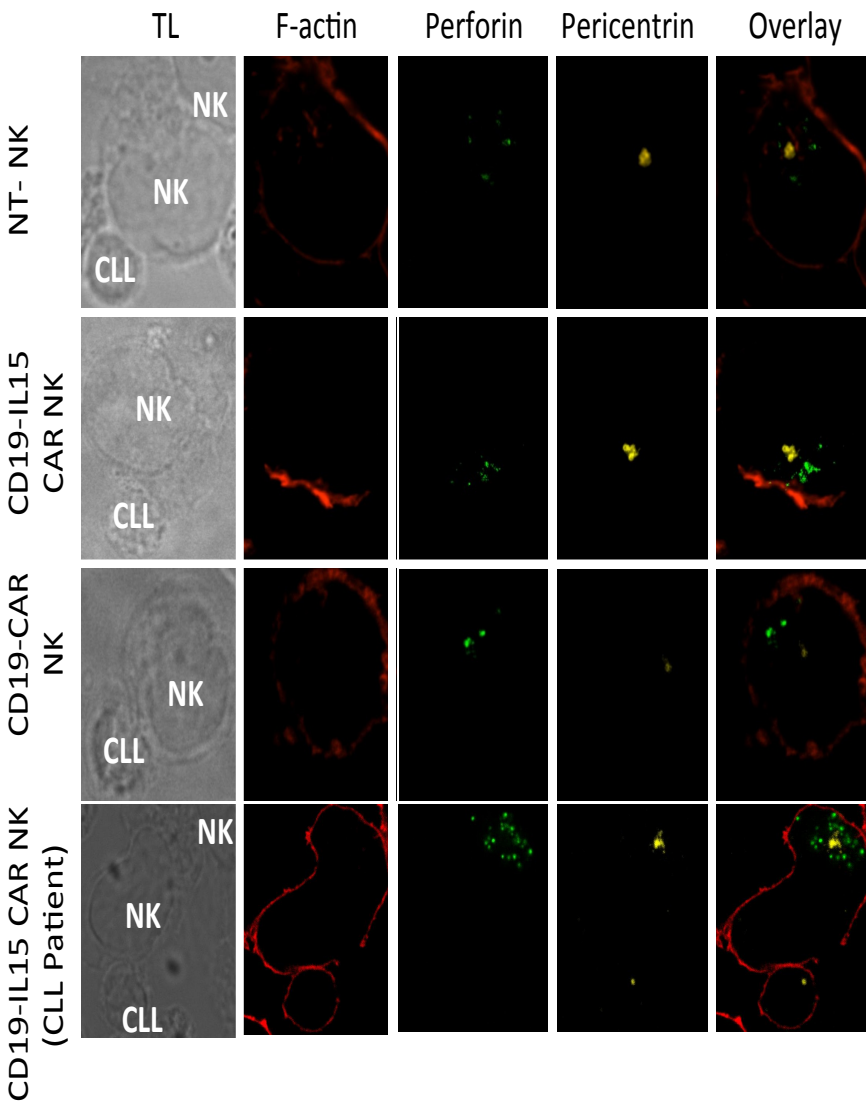


Supplementary Fig 3. Confocal representative images (original magnification $\times 100$) of immunological synapse in non-transduced (NT)-CB NK cells vs. iC9/CAR.19/IL15-transduced CB NK cells, CAR.19-transduced CB NK cells (without IL-15) and CLL patient-derived NK cells transduced with iC9/CAR.19/IL15 against CLL cells (left panels) (left) or K562 cells (right). Images including transmitted light (TL), single-color anti-F-actin (red), anti-perforin (green) and anti-pericentrin (yellow), with an overlay of all stains are presented.

Supplementary Fig. 3

CLL targets



K562 targets

