



Review

The War Is on: The Immune System against Glioblastoma—How Can NK Cells Drive This Battle?

Lucas Henrique Rodrigues da Silva ¹, Luana Correia Croda Catharino ¹, Viviane Jennifer da Silva ^{1,2}, Gabriela Coeli Menezes Evangelista ¹ and José Alexandre Marzagão Barbuto ^{1,2,*}

¹ Departamento de Imunologia, Instituto de Ciencias Biomedicas, Universidade de Sao Paulo, Sao Paulo 05508000, Brazil; lucashenri17@usp.br (L.H.R.d.S.); luana_correia@usp.br (L.C.C.C.); viviane17jennifer@gmail.com (V.J.d.S.); gabrielacoeli@usp.br (G.C.M.E.)

² Laboratory of Medical Investigation in Pathogenesis and Targeted Therapy in Onco-Immuno-Hematology (LIM-31), Departamento de Hematologia, Hospital das Clínicas HCFMUSP, Faculdade de Medicina, Universidade de Sao Paulo, Sao Paulo 0124690, Brazil

* Correspondence: jbarbuto@icb.usp.br; Tel.: +55-11-3091-7375

Abstract: Natural killer (NK) cells are innate lymphocytes that play an important role in immunosurveillance, acting alongside other immune cells in the response against various types of malignant tumors and the prevention of metastasis. Since their discovery in the 1970s, they have been thoroughly studied for their capacity to kill neoplastic cells without the need for previous sensitization, executing rapid and robust cytotoxic activity, but also helper functions. In agreement with this, NK cells are being exploited in many ways to treat cancer. The broad arsenal of NK-based therapies includes adoptive transfer of in vitro expanded and activated cells, genetically engineered cells to contain chimeric antigen receptors (CAR-NKs), in vivo stimulation of NK cells (by cytokine therapy, checkpoint blockade therapies, etc.), and tumor-specific antibody-guided NK cells, among others. In this article, we review pivotal aspects of NK cells' biology and their contribution to immune responses against tumors, as well as providing a wide perspective on the many antineoplastic strategies using NK cells. Finally, we also discuss those approaches that have the potential to control glioblastoma—a disease that, currently, causes inevitable death, usually in a short time after diagnosis.

Keywords: immunotherapy; natural killer cells; cancer; glioblastoma



Citation: da Silva, L.H.R.; Catharino, L.C.C.; da Silva, V.J.; Evangelista, G.C.M.; Barbuto, J.A.M. The War Is on: The Immune System against Glioblastoma—How Can NK Cells Drive This Battle? *Biomedicines* **2022**, *10*, 400. <https://doi.org/10.3390/biomedicines10020400>

Academic Editors: Carlos Del Fresno Sánchez and Eduardo Lopez-Collazo

Received: 15 November 2021

Accepted: 16 December 2021

Published: 8 February 2022

Publisher's Note: MDPI stays neutral with regard to jurisdictional claims in published maps and institutional affiliations.



Copyright: © 2022 by the authors. Licensee MDPI, Basel, Switzerland. This article is an open access article distributed under the terms and conditions of the Creative Commons Attribution (CC BY) license (<https://creativecommons.org/licenses/by/4.0/>).

1. Introduction

Cancers are a heterogeneous and complex set of diseases that pose a great concern to public health, comprising one of the predominant causes of death worldwide. An estimate from the Global Cancer Observatory (GLOBOCAN) indicates that in 2020 alone these diseases were responsible for the deaths of approximately 10 million people [1]. A projection for 2040 suggests that around 30.2 million people will be affected, and 16.3 million deaths will occur [1].

Glioblastoma (GBM) is the primary cancer with the highest incidence within the central nervous system, and its presence considerably reduces patients' quality of life [2]. Its current treatment—including maximal surgical resection, adjuvant radiotherapy, and chemotherapy with temozolomide—significantly improves patient survival [3]. However, this therapeutic regimen is still not enough, as half of the patients die within approximately 15 months after diagnosis [4], and less than 5% of them remain alive after 5 years [5]. Relapse occurs frequently, and death is inevitable.

A broad arsenal of treatments has been established to control or potentially cure neoplasms; more recently, immunotherapy has emerged as a new therapeutic pillar in oncology. Within this treatment modality, most strategies have been centered on either antibodies or T cells, but lately, new studies have sought to take advantage of the antitumor activity of NK cells.

In this review, we first aim to provide aspects of basilar NK cell biology, focusing on their contribution to antitumor surveillance and response. Then, we consider what is known about their functional status in GBM, highlighting the mechanisms of immunosuppression acting in this disease. Finally, we present in more detail the state of the art of immunotherapeutic NK-based strategies against GBM, comprising both already-used strategies and strategies that have shown promising results for the treatment of GBM in preclinical trials.

2. Natural Killer Cells

Discovered in the 1970s during cytotoxicity studies of lymphocytes, natural killer (NK) cells were initially characterized as large granular lymphocytes with “natural” cytotoxicity, since they did not require prior exposure to their targets in order to perform their cytotoxic activity [6–8]. They were also defined as “null” cells, considering that they were non-adherent cells in which the genes encoding antigen receptors were not reorganized, resulting in the Ig[−] phenotype and in their inability to perform rosette formation with erythrocytes (non-B or -T cells) [9]. Finally, NK cells were understood as cells with cytotoxic capacity against a wide range of target cells, but also as cells that play significant roles in inflammation and in innate and acquired immune responses, via their production of chemokines and cytokines [10–12].

Kiessling and Kärre’s studies paved the way for the formulation of the “missing self” hypothesis for the target recognition of NK cells. These works demonstrated that murine lymphoma cells with low or absent expression of genes encoded by the major histocompatibility complex (MHC) class I were lysed very efficiently by NK cells, while cells expressing such molecules were resistant to lysis [13,14]. A conclusion of these experiments and a necessary factor for the “missing self” model is that NK cells should express at least one specific receptor for MHC-encoded class I molecules (MHC I) in order to be able to detect the “self” and its absence. The discovery of MHC-specific inhibitory receptors provided the first explanation for the “tolerance” of NK cells to the “normal” cells within the body (reviewed by [15]).

Today, NK cells are classified as belonging to the group 1 of innate lymphoid cells (ILC1), as they do not depend on clonal receptors to recognize their targets, and can produce IFN- γ [16]. In addition to being present in the peripheral blood, representing ~5–15% of the lymphocytes, they are also distributed in several lymphoid and non-lymphoid tissues, such as the lymph nodes, tonsils, spleen, liver, intestines, bone marrow, and gravid uterus [17,18]. Despite NK cells being classified as innate cells, NK cell responses can exhibit the adaptive phenotype of immunological memory or trained immunity under circumstances such as viral infections, hapten challenge, and stimulation with IL-12, IL-15, and IL-18 cytokines. Interestingly, memory or “adaptive” NK cells present a long lifespan and perform improved responses upon re-stimulation [19].

The phenotypic identification of NK cells within the leukocyte population is distinct in murine and human models. In mice, they can be identified by the absence of CD3 and the presence of NK1.1—an epitope shared by the murine NKPR1b and NKPR1c receptors [20]; however, considering the existence of murine NK1.1[−] strains [21], other phenotypes that are also used include the CD3[−] CD49b⁺ or CD3[−] NKp46⁺ [20]. In humans, NK cells are mainly identified as CD3[−] CD56⁺ cells [22,23].

NK cell development occurs in the bone marrow, and is thought to be a linear process (controversies remain at this point [24]) with multiple stages, characterized by different membrane markers (Figure 1); it starts from a hematopoietic stem cell (HSC) that self-renews and differentiates into a compromised multipotent lymphoid progenitor (MLP). This gives rise to the common lymphoid progenitor (CLP)—a cell with the potential to differentiate between the lineages of B, T, and NK lymphocytes [25–30]. Upon the expression of CD122 (IL-2R β IL-15R β), the lymphoid progenitor becomes responsive to IL-15 [27,31,32]. IL-15 is recognized as an important cytokine for the development, maturation, homeostasis, and survival of NK cells, since mice deficient in IL-15 have lower amounts of mature NK

cells [33–36]. This cytokine promotes the generation of NK cell precursors (NKPs) and immature NK cells (iNKs). The appearance of CD56 (NCAM) indicates the final transition from iNKs to mature NKs (mNKs) [37,38]. Bone marrow exit occurs after the functional gain of cytotoxicity via the expression of NKp46 (CD335) and NKG2D receptors, and at the end of maturation in secondary lymphoid organs, NK cells become positive for CD43 and Mac-1 [39].

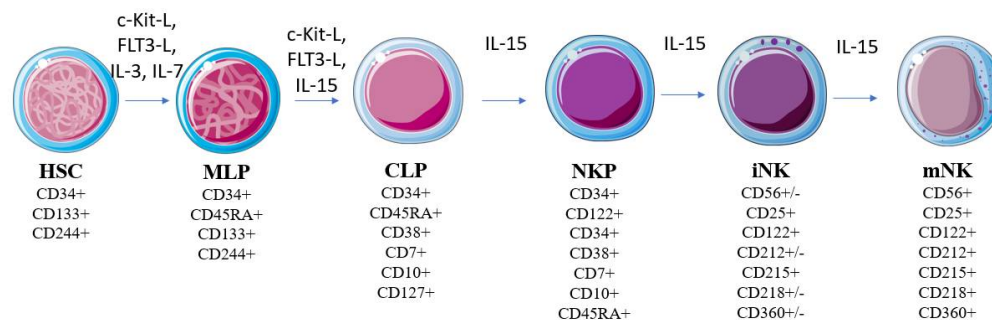


Figure 1. Model of human NK cell development. NK development from HSCs is regulated by multiple cytokines (e.g., FLT3-L, c-Kit ligand, IL-3, IL-7, and IL-15). Modifications of the molecules’ expression patterns are correlated with developmental stages. Abbreviations—Flt3l: FMS-like tyrosine kinase 3 ligand; c-Kit: c-Kit ligand; IL: interleukin; HSC: hematopoietic stem cell; MLP: compromised multipotent lymphoid progenitor; CLP: common lymphoid progenitor; NKP: NK cell lineage precursor; iNK: immature NK cell; mNK: mature NK cell.

Although they do not have V(D)J somatic recombination-generated antigen receptors, unlike B and T lymphocytes, NK cells are endowed with a myriad of germline-encoded receptors that act as immunological sensors, recognizing a wide range of molecular signals [40]. In addition to recognition, these receptors play a crucial role in controlling cell activation, and are therefore categorized as having activating and inhibitory functions [41] (Table 1).

Table 1. Main human NK-cell-activating and -inhibitory receptors and their ligands.

| Receptor | Ligand(s) | Function | Reference |
|-------------------------|--|---------------------------|-----------|
| NKp30 | B7-H6, BAT3, viral ligands, heparan sulfate proteoglycan | Stimulatory | [42,43] |
| NKp44 | Viral ligands, heparan sulfate proteoglycan, nidogen-1, PCNA | Stimulatory | [42,43] |
| NKp46 | Viral ligands, heparan sulfate proteoglycan, vimentin | Stimulatory | [42,43] |
| FcγRIIIa | Fc portion of IgG | Stimulatory | [44] |
| DNAM-1 | PVR (CD155), nectin-2 (CD112) | Co-stimulatory | [45] |
| CD94/NKG2A | HLA-E | Inhibitory | [46] |
| CD94/NKG2C, E | HLA-E | Stimulatory | [47] |
| NKG2D | ULBP1-6, MIC-A, B | Stimulatory | [48] |
| KIR2DS(1-5)/KIR3DS1 | MHC class I | Stimulatory | [49] |
| KIR2DL(1-5)/KIR3DL(1-3) | MHC class I | Inhibitory | [49] |
| 2B4 | CD48 | Co-stimulatory/inhibitory | [50] |
| PD-1 | PD-L1, PD-L2 | Inhibitory | [51] |
| CTLA-4 | CD28 | Inhibitory | [51] |
| TIGIT | PVR (CD155), nectin-2 (CD112), nectin-3 (CD113), nectin-4 | Inhibitory | [52,53] |
| LAG-3 | HLA class II, galectin-3 | Inhibitory | [51,54] |
| TIM-3 | Phosphatidylserine, HMGB1, CEACAM1 glycoprotein, galectin-9 | Co-inhibitory | [51,55] |
| Tactile (CD96) | PVR (CD155), nectin-1 (CD111) | Co-inhibitory/stimulatory | [56] |

Activating receptors include natural cytotoxicity receptors (NCRs), such as NKp30, NKp44, and NKp46. Although most of the endogenous ligands of these receptors are unknown, it has been noted in recent years that NCR interactions are extremely heterogeneous, and may involve viral ligands, proteins expressed upon stress, surface glycoproteins, altered matrix molecules, surface-exposed nuclear molecules, and enzymatically released ligands [42,43]. Other activating receptors include the FcγRIII receptor (CD16), which recognizes IgG antibodies [44], and toll-like receptors, which recognize molecular patterns associated with damage and pathogens (DAMPs and PAMPs, respectively) [57].

Inhibitory receptors include molecules such as PD-1, CTLA-4, TIGIT, LAG-3, and TIM3, described as immune checkpoints that impair NK cell activation [51]. There are also families with mixed-function receptors, which can promote and suppress NK activation, such as the killer cell immunoglobulin-like receptors (KIRs) [40,49,58] and type-C lectin-like NKG2 family [47,48]. KIRs generally recognize class I major histocompatibility complex molecules—mainly HLA-A, B, and C classical MHC molecules—and can be activating or inhibitory [49]. In turn, NKG2 receptors mainly recognize molecules of increased expression under stress, such as MICA, MICB, and ULBP (recognized by NKG2D), in addition to the non-conventional MHC molecule HLA-E (recognized by CD94/NKG2A, C) [47,48,58]. The DNAX accessory molecule-1 (DNAM-1), Tactile (CD96), and TIGIT are members of the immunoglobulin superfamily which, as demonstrated in Table 1, have one common ligand—the poliovirus receptor (PVR, CD155), which displays binding with different affinities, with the strongest interaction with TIGIT, followed by CD96, and the weakest with DNAM-1. PVR is overexpressed in several tumors; thus, the expression level of each receptor in NK cells is thought to determine the functional role of PVR in NK activation [45,56]. DNAM-1 is well established as a co-activating receptor, and has important functions in tumor immunosurveillance, given that its absence in knockout mice favors the incidence and growth of carcinogen-induced tumors, as well as reducing the clearance of CD155⁺ transplanted tumor cells in vivo and the cytotoxic activity of NK and T cells in vitro [59]. The functional role of CD96 is controversial; despite studies showing correlations between its expression and the activation of NK cells [60] and CD8⁺ T cells [61], beneficial roles of its neutralization or knockout have also been described, such as metastasis suppression via IFN-γ secretion by murine NK cells [62,63]; in fact, its co-inhibitory function is being explored in antibody-dependent immune checkpoint blockade strategies [51]. In addition to the already-mentioned receptors, NK cells contain SLAM family receptors [50], chemokine receptors [64], and others [43,58].

Ligand specificity and functional differences in NK receptors suggest an astonishing heterogeneity of activating and inhibitory stimuli underway in NK cells present in biological tissues. Consequently, it is not surprising that the dynamic integration of these signals determines the fate of NK cell activation and responsiveness [40,65]. Over the years, a consensus has been established on the fact that activation stimuli may not always culminate in an effector response, as several factors modulate the responsiveness of NK cells, from their development to even after their functional maturation (reviewed by [65]).

The pattern expression of the aforementioned receptors generates a great diversity regarding types of NK cells. The KIR receptor genes, for example, in addition to being highly polymorphic, are stochastically expressed in the NK cell population [66]. Due to these factors, it is estimated that ~20% of CD56^{dim} NK cells in peripheral blood do not have at least one inhibitory KIR or NKG2A receptor capable of recognizing some MHC I molecules [67]. Therefore, in order to avoid self-reactivity, NK cells undergo a process called “licensing” or “education” during their development, where only NK cells capable of recognizing MHC I alleles become functionally mature [66]. In agreement with this, studies over the past decade involving NK cell populations in humans or mice have revealed that a considerable portion of cells do not express specific inhibitory MHC I receptors, but are still self-tolerant [68–70].

The cytotoxic effect involves the formation of an immunological synapse with the target cell, followed by exocytosis of cytoplasmic lytic granules containing perforin 1 and

granzymes, which together result in the formation of pores in the target cell membrane and initiation of the programmed cell death pathway [71]. Another consequence of degranulation is the increase in the expression of the Fas ligand protein (FasL, CD95L) in the cell surface [72,73]. FasL is recognized by the transmembrane protein Fas (CD95)—a TNF family death receptor that activates the extrinsic pathway of apoptosis. This signaling mechanism is shared by other receptors of the TNF family, such as the functional receptors TRAIL R1 and TRAIL R2, which recognize the TRAIL protein expressed in activated NK cells [71].

In addition to cytotoxicity, it has been increasingly recognized that NK cells establish important immunomodulatory communications with other innate and adaptive cells. This crosstalk occurs through physical contact [74], or via secretion of soluble factors such as cytokines, and may eventually, be recognized as the main physiological function of these cells.

There seems to be a hierarchy of stimulatory signal strength to trigger each of these actions: the formation of an LFA-1-mediated immunological synapse requires the weakest activation signal; the secretion of chemokines, such as MIP-1, involves a stronger signal; degranulation and cytotoxicity require an even stronger signal; and the production of cytokines, such as IFN- γ and TNF- α , necessitates the most stringent signal [40]. Through these mechanisms, NK cells play pivotal roles in numerous physiological and pathological conditions. Their participation during embryonic pregnancy [75], as well as in autoimmune diseases [41,76], immunodeficiency [77], neurodegenerative diseases [64,78], autoimmune diseases [79], possibly allergic diseases [80], and during the control of intracellular infections, such as viral infections [81,82], among several other situations, is remarkable. However, since their discovery in the 1970s [83], they have been especially appreciated for their ability to recognize and kill neoplastic cells.

3. NK Cells in Immunosurveillance against Cancer

At least in murine models, NK cells play a central role in immunosurveillance, acting against established tumors and in the prevention of metastasis, conferring them an attractive role in immune strategies aiming to control the progression of tumors and potentially eradicating them [84,85]. Their participation in tumor immunosurveillance has been evidenced in several studies, and is well established in murine models, where blocking the activity of effector mechanisms shared by NK cells—such as perforin, TRAIL, and IFN- γ —leads to a higher incidence and/or development of tumors when compared to wild animals [86–91]. Likewise, and pointing more specifically to NK cells, their depletion by treatment with monoclonal antibodies to asialo-GM1 or NK1.1 increases the susceptibility of mice to chemically induced fibrosarcomas [92].

Despite providing strong evidence for a significant role of NK cells in immunosurveillance, these are studies in murine models, and their equivalence in humans could be questioned. In this sense, a series of observations can be brought to argue in favor of an equivalent role of NK cells in humans. Initially, it must be recognized that NK cells from healthy individuals do exert *ex vivo* antitumor activity against cells of numerous primary tumor lineages, demonstrating the existence of spontaneous cytotoxicity against human tumors [93]. Another pivotal piece of evidence is that the functional activity of NK cells significantly impacts the incidence of cancers. This was demonstrated by a prospective observational study, with an 11-year follow-up, carried out from 1986 onwards in a Japanese population [94]. The study looked at the natural cytotoxicity of peripheral blood cells from 3,625 healthy individuals against the K-562 tumor lineage (attributed primarily to NK cells) and, after adjustment for age, sex, and lifestyle, showed that lower levels of cytotoxicity were correlated with a higher incidence of cancer, while medium or high levels of cytotoxicity were protective factors, decreasing the relative risk of tumor incidence [94].

The roles of the immune system's different components in immunosurveillance can be inferred by observing patients with specific immunodeficiencies. However, for the establishment of the role of NK cells, the rarity of well-defined and specific immunodeficiencies

of NK cells is a major obstacle [95]. Ebbo et al. (2016) [96], analyzing 457 patients with common variable immunodeficiency (CVID) in a 9-year follow-up multicenter cohort study, showed that the degree of NK lymphopenia did not correlate with the incidence of cancer; they hypothesized that the lack of correlation could be attributed to patients' median age in the evaluation period and, moreover, that only a small fraction of the patients had isolated NK cell immunodeficiencies. Classical NK cell deficiency (CNKD), on the other hand, is a severe condition of immunodeficiency with NK-cell-only lymphopenia, where NK cells are low or absent in the peripheral blood. Among the few reported cases of CNKD, the development of cancers (mainly leukemias and human papilloma virus (HPV)- and Epstein–Barr virus (EBV)-associated cancers) has been reported [77]. Despite this observation, the difficulty faced by these patients in controlling or resolving infections, which generate carcinogenesis-contributing factors [94], precludes the attribution of a definite role for NK cells in immunosurveillance. Another confounding factor in these patients is that *GATA2* and *MCM4*—the two main genes involved in the origin of CNKD—could be relevant in carcinogenesis [97,98], including *GATA2* mutations identified in families with predisposition to myelodysplastic syndrome and acute myeloid leukemia (MDS-AML) [97].

Nevertheless, when considering a possible role for NK cells in immunosurveillance, several factors must be added to the equation, since they can influence the outcome significantly; these include the distribution of cell subsets in different types of tissues, the abundance of NK cells in the tumor, the genetic constitution of the components of each patient's immune system, and the evasion strategies employed by the tumor and the microenvironment to modulate the efficacy of NK cells (and other immune cells) [99]. Though this complexity may make it difficult to ascertain the contribution of NK cells to immunosurveillance, it points to different lines of investigation that might clarify the role these cells and indicate pathways to effectively exploit their anticancer potential.

3.1. Tumor Cell Recognition

NK cells can kill cancer cells while maintaining tolerance against healthy cells [14]. As already mentioned, any selective recognition by NK cells depends on the signals integrated by their activating and inhibitory receptors. Unlike most healthy cells, tumor cells may have low or reduced expression levels of the MHC-I molecules on their surface; this prevents the engagement of inhibitory receptors—such as KIR and NKG2A receptors—which would enable NK cell activation over the target cell [100–102]. In parallel, tumor cells can express induced ligands—such as MICA, MICB, B7-H6, CD58, and ICAM1—which engage activating receptors [101]. Indirect recognition through the CD16 receptor, which binds to the Fc portion of IgG antibodies associated with tumor antigens, is also possible, stimulating antibody-mediated cytotoxicity [103]. The expression level of these molecules in tumor and NK cells dictates the malignant cell's death processes [101]. However, NK cell activity can be altered by numerous components of the tumor microenvironment, including immunosuppressive cytokines, such as TGF- β , and pro-inflammatory cytokines, such as IL-12, IL-15, IL-18, and IL-21 [101]. Hypoxia is one major factor also implicated in immune regulation, through the expression of the hypoxia-inducible factor 1 α (HIF-1 α)—a transcriptional factor that promotes multiple signaling, inducing immune suppression, including that of NK cells [104,105].

3.2. Antitumor Functions

Upon activation, NK cells can exert antitumor activities in two ways: by directly killing malignant cells, or by modulating the activity of other leukocytes (Figure 2). The direct killing is thought to be mediated mainly by perforin/granzyme-dependent cytotoxicity, as noted in numerous experimental models [85,106]. Moreover, an important role of cytotoxicity mediated by the death receptors FasL and TRAIL has also been observed [107]. Time-lapse microscopy analyses indicate that a single NK cell can kill multiple tumor cells in a serial manner [106,108]. In the serial killing of neoplastic cells susceptible to both death

mechanisms, the granzyme-mediated death initially predominates, and the contribution of the pathway dependent on death receptors progressively increases [106].

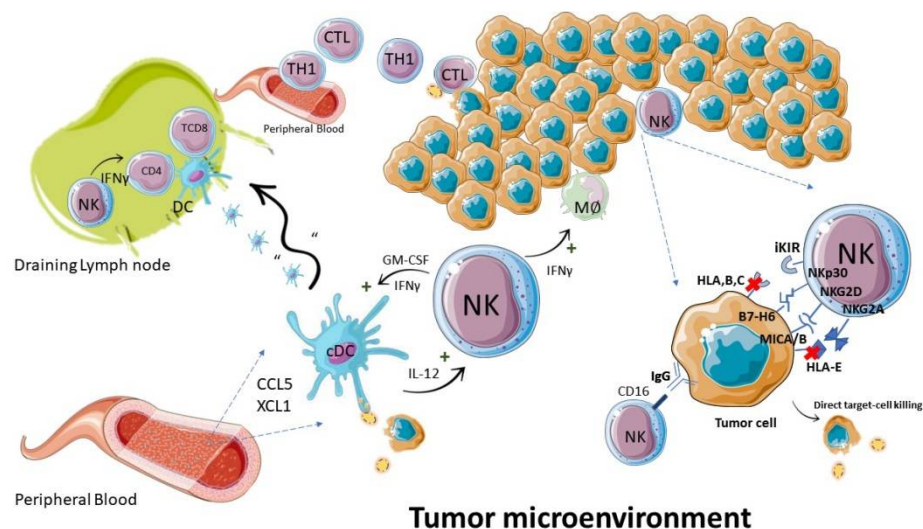


Figure 2. NK cells during an antitumor immune response. The antitumor function of NK cells is executed by direct killing of neoplastic cells and by regulation of immune cells: such as induction of MØ: TH1: and dendritic cell pro-inflammatory responses. Abbreviations—IFN: interferon; CTL: cytotoxic T lymphocyte; TH1: T helper type 1 lymphocyte; cDC: conventional dendritic cell; MØ: macrophage.

In addition to cytotoxicity, NK cells can produce and secrete soluble factors, being a major source of IFN- γ , CCL5, XCL1, XCL2 and Flt3L, and GM-CSF; through these cytokines and chemokines, they establish a cooperative relationship with other immune cells, and can indirectly trigger the death of tumor cells [109]. One important chemokine axis regulating NK function, for example, is the “regulated on activation, normal T-cells expressed and secreted” (RANTES), also known as CCL5 [110,111]. This chemokine, which is secreted by immune cells such as NK and T cells, has the ability to regulate the infiltration of multiple immune cells in inflammatory focus, including NK cells, T cells and monocytes [112,113], in addition to contributing to NK cell expansion and activation [114]. On the other hand, through the cytokine IFN- γ , NK cells can activate macrophages, directing them to kill tumor cells [109], in addition to inducing the differentiation of Th1 lymphocytes in lymph nodes [115]. In a murine melanoma model, NK cells secreted the chemokines CCL5 and XCL1, recruiting cDC1 dendritic cells into the tumor microenvironment, leading to controlled tumor growth [116]. A similar dynamic of control of the cDC1 levels and improved prognosis was linked to Flt3L cytokine production by intratumoral murine NK cells [117]. This DC subtype plays a key role in inducing the cytotoxic CD8⁺ T cell (LTCD8) response against tumor antigens in murine models [118,119]. Significantly, the NK cell genetic signature profile also correlates with the cDC1 cell profile in several human cancers, and both are associated with the levels of transcripts of the chemokines CCL5, XCL1, and XCL2, suggesting an equivalent role for NK cells in humans [116].

Another observed activity of NK cells is the induction of the maturation of dendritic cells, both through physical contact via NKp30, and through the secretion of cytokines such as IFN- γ and GM-CSF [16]. In vitro, IL-2-activated NK cells can facilitate the presentation of tumor antigens by dendritic cells via MHC-I, improving the activation of Ag-specific CD8⁺ T lymphocytes [120]. Indeed, NK-DC crosstalk results in the in vivo formation of a protective LTCD8 response against the tumor [121]. In agreement with the multiple effects of NK cells in modulating adaptive antitumor responses, in lymphoma-bearing mice, the presence of NK cells or the cytokine IFN- γ is essential for the generation of a long-lasting adaptive (Th1 and CTL) antitumor response [122].

Remarkably, NK cell infiltration and activity can predict the trajectory of different types of human cancers [101]. Nersesian et al. (2021) [123] performed a systematic review of 53 scientific articles, comprising a total of 9624 patients carrying different types of solid tumors, including head and neck, liver, lung, endometrial, breast, and 10 other types of tumors. Most of the tumors assessed (~59.3%) showed a positive association between NK cell infiltration and longer overall survival, while ~38.9% showed no correlation and ~1.9% pointed to a worse prognosis. A meta-analysis of the data showed that NK cell infiltration is associated with a lower risk of death. This suggests an important contribution of these cells to the natural resistance against solid tumors, and indicates their potential for immunotherapy.

4. NK Cells in GBM

The dynamic blood–brain barrier (BBB) and other factors maintain a reversible state of immune privilege in the brain parenchyma, and prevent the entry of most peripheral blood immune cells into the non-inflamed central nervous system [124]. However, glioblastoma cells disrupt astrocyte extensions involving blood vessels and modify vascular homeostasis, thus breaking the BBB [125]. In addition, they maintain a pro-angiogenic and pro-inflammatory environment that leads to increased tissue permeability and chemotaxis. These changes support the recruitment of diverse immune cells into the tumor, which can be identified by immunohistochemical or flow cytometry techniques [126–130]. It is also possible to obtain the sequences of the total RNA in GBM tissue stored in databases, and later use bioinformatics tools, such as CIBERSORT, to deconvolute immune populations according to the profiles of genetic signatures [131,132]. Collectively, these strategies evidence the presence of diverse leukocyte populations, including macrophages, CD4⁺ T lymphocytes, CD8⁺ T lymphocytes, B lymphocytes, neutrophils, dendritic cells, mast cells, and other immune cells, including the NK cells [126–130,132].

Few attempts to assess NK cells in the GBM microenvironment have been described in the literature. Furthermore, a comparative analysis between these studies is difficult, since different methods of analysis, cell markers, and gating strategies of the NK cell population have been employed. It is noteworthy that in some cases the number of samples is low [128,132], and observations suggest the existence of variations between individuals [127,129,132]. With all of this in mind, some reports indicate that in GBM, a low frequency of phenotypically and functionally altered infiltrating NK cells can be found (Table 2).

Table 2. Some reports of tumor-infiltrating NK cells (TINK) in the GBM microenvironment.

| Method | Markers | Infiltration in GBM | Main Phenotypic and Functional Alterations | Sample Size | Reference |
|----------------|--|---|---|-------------|-----------|
| Flow cytometry | CD14 ⁻ CD3 ⁻ CD56 ⁺ | 2.11 ± 0.54% of leucocytes | Predominance of CD56 ^{dim} CD16 ⁻ NK cells. Some NK cells lack expression of NKG2D (42.55%) | n = 8 | [128] |
| Flow cytometry | CD19 ⁻ CD3 ⁻ CD56 ⁺ CD16 ^{high} , among others | 1 ± 5% of lymphocytes and 0.05 ± 0.05% of all cells in the tumor sample | Not measured | n = 53 | [129] |

Table 2. Cont.

| Method | Markers | Infiltration in GBM | Main Phenotypic and Functional Alterations | Sample Size | Reference |
|--|---|--|--|---|-----------|
| Flow cytometry | CD45 ⁺ CD3 ⁻ NKp46 ⁺ | Not measured | ↓ Activating receptors' protein levels compared to PB NK cells (NKp30, NKG2D, DNAM1, and CD2); ↑ CD69, a marker of activation; ↑ CD9, a TGF-β-induced molecule, described previously as being related to impaired activation of NK by modulation of NKG2D levels | <i>n</i> = 8 for NKp30, CD69, NKG2D and CD2) <i>n</i> = 9 for DNAM-1 <i>n</i> = 5 for CD9 | [133] |
| Mass cytometry (CyTOF) | CD3 ⁻ CD56 ⁺ CD16 ⁺ | ~10% of leucocytes, with no significant difference from PB NK cells. | ↑ CXCR3 protein and ↓ IFN-γ transcripts compared to PB NK cells | <i>n</i> = 8 | [134] |
| RNA-Seq - CIBERSORT (In silico analysis) | 13 genes' expression profiles | 9.8% of deconvoluted leukocytes | More quiescent than activated NK cells | <i>n</i> = 540 | [132] |
| Immunohistochemistry | CD56 ⁺ | ~50% of samples showed a rare level of GBM intratumoral CD56 ⁺ cells (<5 NK cells in 10 high-power fields (HPFs)) The lasting % of samples showed focal (2–20 cells/HPF) or median (20–100 cells/HPF) infiltration, but not extensive infiltration (>100 cell/HPF) in intratumoral tissue; 49% of samples showed some level of perivascular NK infiltration, and 89% of samples showed some intratumoral infiltration | Not measured | <i>n</i> = 63 | [127] |

Abbreviations: ↑—an increasing in the molecule(s)'s expression; ↓—a decreasing in the molecule(s)'s expression.

One may suggest that alterations such as reduced transcription of IFN-γ [132], decreased expression of some activating receptors (e.g., NKp30, NKG2D, DNAM-1, and CD2) [133], and the expression of transcripts associated with quiescent NK cells in GBM tissue [132] collectively represent tumor-modified NK cells, but the functional impact of these changes remains elusive in GBM. The NK CD56^{dim} CD16⁻ phenotype, shown to be the predominant NK type in a report [128], could be generated by the loss of membrane expression of CD16, which is a process mediated by the membrane ADAM-17 metalloproteinase, which occurs in vitro under various activation stimuli (e.g., cytokines, activating antibodies, and target cells) [135,136]. Curiously, in a 2019 study, CD56^{dim} CD16⁻ NK cells were reported as the predominant NK subtype (86%) infiltrating the melanoma tumor microenvironment, and their peripheral blood count was positively correlated with decreased cytotoxicity against K-562 tumor targets [137]. Another phenotypic change described in

NK cells in GBM patients was the lower expression of the chemokine receptor CXCR3 in peripheral blood NK cells compared to tumor NK cells [132]; this could impair the infiltration in the tumor microenvironment, considering that CXCR3 expression in NK cells has been shown to be crucial for this process in other tumor models in mice [138]. However, additional studies are required in order to confirm these findings and their potential role in the anti-GBM response exerted by NK.

In a BALB/c-nude mouse orthotopic GBM model, depletion of NK cells by the administration of anti-NK1.1 antibodies did not affect the progression of primary tumor mass, but was associated with the appearance of lung metastases, which were absent when these T-cell-deficient mice maintained their NK cells in peripheral blood [139]. This result is consistent with the prevalent view of NK cells' role in metastasis control and, although speculatively, could be interpreted as indicating that NK cells, in addition to many other potential contributing factors [140], might be involved in the observed absence of extracranial GBM metastases in humans.

Some studies, noting low intratumoral infiltration in brain cancers, hypothesized that NK cells would not play a significant role in the natural control of these tumors [141]. In agreement with this, the absence of correlation between the accumulation of NK cells in the tumor and the prognosis of patients with GBM [129,142] has been reported. In contrast, independent correlation between activated NK cells and worse [143] or improved [144] prognosis has been also described. These conflicting data are probably related to the great heterogeneity of tumors classified as GBM [129], and to the various escape mechanisms that might be present in these tumors [145], pointing to the need for a better and more complete characterization of immune infiltration in GBM before one can imply a specific role for NK cells—or any other cells, for that matter—in its biology.

In fact, many known mechanisms could counteract NK antitumor activities within the GBM. These include intrinsic characteristics of neoplastic cells and factors dependent on the tumor microenvironment, such as structural elements and the composition of the immune infiltrate [146]. For example, GBM cells can maintain the expression of class I MHC molecules such as HLA-A, B, and C [128], which promote the engagement of inhibitory KIR (iKIR) receptors and prevent NK cell cytotoxicity. GBM cells may fail to express MIC-A/B and CD70- ligands to activate receptors NKG2D and CD27 on NK cells, respectively [128]. The lectin-like transcript 1—a CD161 receptor ligand—has been described in glioma lines, and suppresses NK cell cytotoxicity [147]. The HLA-E protein is frequently overexpressed GBM *in vivo* and *in vitro*, and its presence in GBM tumor cells has been shown to impair NK cytotoxicity in an NKG2A/CD94-dependent manner [148]. In addition, GBM cells can secrete immunosuppressive factors such as TGF- β [149], which may act locally and systemically, impairing the activation, cytotoxicity, proliferation, and production of IFN- γ by NK cells [150]. In addition, TGF- β reduces the expression of activating receptors on NK cells, such as NKp30, DNAM-1, and NKG2D [151,152]. Although the role of NK cells in GBM control is still uncertain, immunotherapeutic strategies attempting to overcome known NK-cell-suppression mechanisms in this disease may effectively harness these cells to fight it.

5. NK-Cell-Based Immunotherapy

Cancer immunotherapy has been an elusive goal ever since the proposition of the immunosurveillance hypothesis by Burnet [153]. However, due to continuous elucidation of immune and tumor-evasion mechanisms, in recent years there has been a significant change in this previously dismal picture, and cancer immunotherapy has become a concrete option for many patients with various types of cancer [154].

Due to the many roles that NK cells can play against cancer, as well as their ability to quickly recognize and attack cancer cells, without the need for previous sensitization [155], while also presenting limited reactivity against healthy tissues [156], many studies have explored the potential of NK cells in cancer immunotherapy. NK-cell-based immunotherapy presents the possibility of targeting tumors that still lack well-defined antigens for specific

response, as well as the possibility of using allogeneic products prepared in advance, and that may be administered in multiple patients without causing graft-versus-host disease (GvHD) [157–159], thus potentially leading to less toxicity in comparison to CAR T-cell infusions, for example [156,159].

Different strategies of NK-cell-based immunotherapy for GBM are summarized in Figure 3; they pursue different strategies, aiming at the number or in vivo persistence of these cells [160], the activation or blocking of their inhibitory signals, their cytotoxic potential through adoptive cell therapies [155], or sensitizing cancer cells to NK-cell-mediated lysis [161].

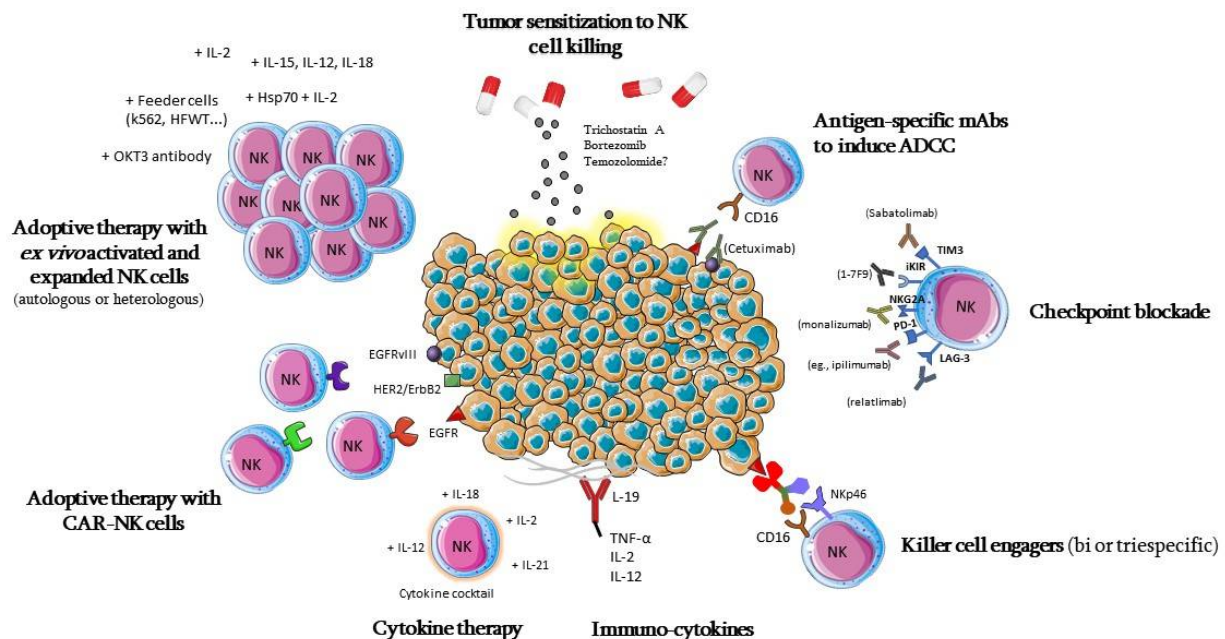


Figure 3. Strategies of NK-cell-based immunotherapy for the treatment of GBM.

When activated, NK cells have the ability to generate in vitro and in vivo antitumor responses against GBM cell lines [111,162–165]. NK cells are capable of promoting regression of tumor spheroids [166], having the ability to infiltrate and induce apoptosis of LN-18, U87MG, T98G, and U251MG cell-line-derived GBM spheroids [167]. Given that tumor spheroids are 3D models that mimic several conditions from the tumor microenvironment (including tridimensional structure, nutrient and gas diffusion gradients, hypoxia, and low pH in the central region) [168], and considering specifically that GBM spheroids possess different patterns of gene expression compared to 2D cultures [167], the observed cytotoxic activity of NK cells suggests that, in vivo, NK cells might retain their killing effect even within the hostile GBM microenvironment. Furthermore, NK cells seem to preferentially kill GBM cancer stem cells (CSCs), at least in vitro [169–173]. If confirmed, this characteristic would be relevant, since CSCs have been deemed responsible for many of the more aggressive aspects of brain tumors, including heterogeneity, resistance to radiotherapy and chemotherapy, invasiveness, and angiogenesis [174].

Regarding the possibility of brain injury caused by adverse NK cytotoxicity against healthy cells, the literature indicates no major risks concerning direct neuronal or glial cytolysis. In fact, co-culture assays of astrocytes and activated human-derived NK cells showed a minimal killing effect compared to stem or differentiated GBM cells [173]. Data showing that NK cytotoxicity could be directed in vitro towards murine dorsal root ganglia neurons under several conditions, including hypoxic environments or infection [175–177], must be put in perspective by the observation that the killing of peripheral neurons by activated NK cells was inhibited by addition of Schwann glial cells in triculture [178], suggesting that the cellular context surrounding peripheral neurons is important for determining NK killing activity. Furthermore, the cytotoxic activity was not reproducible in

hippocampus or ventral spinal cord central nervous system neurons [175,177], indicating a tissue restriction. Moreover, despite the recently reported role of NK cells in the immunophysiological regulation of adult brain neurogenesis and cognition, by killing of senescent neuroblasts [179], the number of neural stem cells seemed not to be affected by this activity [179], and in vitro assays indicate that GBM stem cells are preferentially targeted by activated NK cells in comparison to healthy human primary neural progenitors [133]. Given these preliminary observations, we will discuss the current progress and potential strategies for the therapeutic use of NK cells in GBM.

5.1. Adoptive Cell Therapy

Adoptive cell transfer (ACT) with NK cells is a strategy that involves the infusion of expanded and activated NK cells to have them act against the tumor. Currently, NK cells can be obtained at large scale through numerous methods. They can be isolated from the peripheral blood of patients, or from healthy donors (either from the postpartum placenta, the umbilical cord blood, or peripheral blood) [156]. Other approaches involve the differentiation of NK cells from stem cells—such as induced pluripotent stem cells (iPSCs), human embryonic stem cells (hESCs), or hematopoietic stem cells [156,180,181]—or the use of established human cell lines, such as the NK-92 cell line, averting the need for isolation and differentiation steps [182].

The activation and expansion of NK cells in vitro are important in order to achieve a significant representation of effector cells. This can be achieved by the use of cytokines such as IL-2 or IL-15, or through combinations of IL-12, IL-15, and IL-18; activating antibodies (such as OKT3) or “feeder” cells, such as K-562 cells, can also have this effect [156]. Furthermore, in the adoptive cell transfer, it is possible to genetically modify the NK cells by altering one or more of their characteristics [183], which is the foundation of the targeted therapy with NK cells carrying a chimeric antigen receptor (CAR-NK), which will be addressed below.

NK cells can be transferred in GBM intravenously and/or via the intracranial route [184]. The intracranial administration may involve, for example, the intracavitary application of cells right after the tumor resection surgery, the intracerebral or intrathecal injection (in the subarachnoid space), or the release of cells in the tumor cavity through surgically implanted intracranial devices (e.g., Ommaya catheters) [185–187]. In BALB/c-nude mouse models of GBM (using the U87MG line), the intratumoral injection of human NK cells required fewer cells than the intravenous administration (10^4 vs. 10^7 cells) to reach the same cell count in the tumor after 24 h. In comparison to the control group—treated with saline solution—injections promoted a 57–60% tumor volume reduction and an increase in the number of apoptotic tumor cells [139]. Despite the relatively simpler intravenous administration, the local application of NK cells seems more attractive since, at least in the model, it very significantly reduced the need for in vitro cell expansion. Though this advantage of the intratumoral ACT with NK cells over the intravenous route still needs to be confirmed, this study indicates that the injection of activated NK cells in the tumor might be an effective approach to treat GBM.

Some reports describing the use of NK cells derived from the patients (autologous) for the treatment of solid tumors have failed to demonstrate considerable therapeutic effects [188], and the development of new strategies has been delayed because of the practical difficulties involved in the production of highly purified and activated NK cells [189], as well as individualized and multiple-step protocols for each patient. However, new activation and expansion approaches have shown promising results in clinical reports. In a phase III cohort study published in 2019, patients with advanced colon carcinoma received autologous NK cells after the surgical treatment and oxaliplatin chemotherapy [190]. These NK cells were selectively expanded from the peripheral blood mononuclear cells (PBMCs), with 95% purity, via selective culture and stimulation [191]. The application of NK cells in multiple administration cycles did not lead to adverse effects, and significantly increased both the OS and the 5-year PFS in comparison with the control groups (72.5% vs. 51.7%,

$p = 0.037$; and 51.1% vs. 35%, $p = 0.044$, respectively) [190]. In another recent phase I/II study by Nagai et al. (2020) [189], autologous NK cells were utilized to treat patients with various advanced solid tumors. Through the magnetic purification of the NK cells obtained from PBMCs, followed by culture in a growth medium supplemented with IL-2, it was possible to generate highly purified (>90%), expanded (>200-fold), and activated (>85% of CD69⁺ NKs, in 8/10 of the cases) NK cells. Intravenous administration cycles of 10⁶ to 10⁸ NK cells in the patients did not lead to severe adverse effects, and 4/10 patients showed signs of tumor control, with one patient presenting partial remission of a pulmonary metastasis and surviving for 4 years, and the other three patients presenting stable disease for an average period of 4 months. Collectively, the mentioned studies with solid tumors show evidence of safety, and of the potential of autologous NK cells to improve the clinical condition of the patients, which encourages studies in patients with GBM, where any effort to improve the prognosis is valid.

Indeed, in GBM, autologous NK cell therapy has been exploited in treatment with lymphokine-activated killer (LAK) cells [192–194]. LAK cells are a heterogeneous cell population—comprising mainly T lymphocytes, NK cells, and NKT cells—which are obtained through the activation and expansion of PBMCs with IL-2 [194,195]. Dillman et al. (2004) [185] conducted a phase I/II non-randomized study with patients with recurrent GBM who received autologous LAK cells intracranially after undergoing their second surgery. The patients with primary GBM who received LAK cell infusion had prolonged overall survival in comparison to the control group (mean OS: 17.5 vs. 13.6 months, $p = 0.012$). In this case, despite the seemingly positive effect of the immunotherapy and the *in vitro* cytotoxic activity against tumor cell lines, the NK cells represented only a reduced fraction of the cells expanded with IL-2 (CD3⁻ CD16⁺); thus, the relative contribution of the NK cells remained uncertain [185]. The same group subsequently conducted another phase I/II clinical trial with intracranial LAK cell therapy in a group of patients with recurrent GBM who mostly underwent conventional treatment, with surgery followed by chemoradiotherapy (TMZ) [194]. The patients who received the LAK therapy had a median survival of 20.5 months after the diagnosis [194], which is a longer time in comparison to the median survival of 15 months observed in patients treated with the conventional therapy [3]. However, only the number of T-LAK cells (CD3⁺ CD56⁺ CD16⁺) and the use of corticosteroids showed some correlation with the response, and no correlation was seen with the number of NK cells (CD3⁻ CD56⁺ CD16⁺) [194]. Only randomized large-scale studies would be able to determine the efficacy of therapy with LAK cells in GBM, and determine the relative contribution of NK cells.

Another alternative was tested for autologous NK cell therapy in patients with GBM and other high-grade recurrent gliomas who underwent tumor resection. In this case, the patients' PBMCs were stimulated with the combination of irradiated feeder cells (HFWT) and IL-2 [184], leading to a selective expansion of the NK cells (median 85.9% purity). These cells had a more potent *in vitro* cytotoxic effect against GBM cell lines in comparison to LAK cells, which received only IL-2 [184]. When administered in patients, in combination with low intravenous doses of IFN- β , the therapy proved to be safe, and was associated with a reduction in tumor volume in some cases [184]. One patient presented stable disease until his death after 4 months, and another patient had a minor response, with 25% reduction of tumor volume within 4 months, and overall survival of 15 months after the treatment with the NK cells/surgery [184]. Even though the efficacy of the monotherapy with NK/LAK cells has not been proven, the results obtained thus far indicate that an improved strategy might achieve significant results.

Recently, the therapeutic potential of ACT therapy with NK cells activated with IL-2 and Hsp70 has been shown. The heat shock protein 70 (Hsp70) is a chaperone overexpressed in many cancers [196], including in human GBM [197,198]. *In vitro* treatment of NK cells with Hsp70 and IL-2 promotes cellular activation and greater antitumor cytotoxic activity [196], leading to the selective death of tumor Hsp70⁺ cells [199]. ACT with autologous NK cells activated with IL-2 and Hsp70 has been tested in patients with metastatic

colorectal cancer or small-cell lung carcinoma (phase I), showing safety and potent cytotoxic effects *in vitro* [199]. In a murine model of GBM [164], the systemically injected IL-2/Hsp70-treated NK cells were able to efficiently cross the BBB and reach the tumor, establishing contact with the neoplastic cells. This was correlated with a reduction in the number of GBM cells (marked with GFP). Both the systemic and the intracerebral infusion of IL-2/Hsp70-treated NK cells led to the shrinking of the tumor to almost undetectable levels 8 days after treatment ($p = 0.0029$ and $p = 0.0319$, respectively), while non-activated NK cells were ineffective [164].

Allogeneic therapy, using NK cells derived from donors or from NK cell lines, despite expanding the sources of NK cells, has the disadvantage that allogeneic cells can be rejected by the patient's immune system. To overcome this issue, lymphodepleting drugs—such as fludarabine and cyclophosphamide—can be administered days before the infusion of allogeneic cells [156]. The allogeneic strategy may be worthwhile, since in addition to averting the need for individual sample processing from each patient, it can eventually overcome the tumor suppression of autologous NK cells mediated through the expression of MHC class I molecules. This is possible because of mismatches between the iKIR receptors from the donor and the MHC class I molecules from the patient [200], leading to improved NK cell activation against the tumor. Several studies have shown that therapy with alloreactive NK cells is relatively safe, and does not lead to graft-versus-host disease (GvHD) [201]. This allogeneic rejection effect is already being exploited in the treatment of hematological malignancies [157], and there are strategies already available to potentiate alloreactivity, such as the screening of the donors [202] and the use of NK cells with only one KIR receptor, such as the NK-92 cell line [182], or sorted NK cells [203].

The FDA recently approved the use of allogeneic NK cells differentiated from hematopoietic stem cells from the human placenta (CNK-001) as a new investigational drug for the treatment of GBM. The approved clinical trial, NCT04489420, which is being conducted by the University of Texas MD Anderson Cancer Center, is the first attempt to evaluate monotherapy with allogeneic NK cells without genetic modifications in patients with GBM. The trial will evaluate the safety and preliminary efficacy of NK cells, comparing the intratumoral and intravenous routes, with the latter being associated with previous lymphodepletion with cyclophosphamide [204].

5.2. CAR-NK Cells

The success of chimeric antigen receptor (CAR) T-cell therapy against hematological tumors, with three therapies already approved for commercialization by the FDA, has prompted interest in improving the design of CARs, and in expanding this technique to other cell types, such as NK cells. CARs were initially developed to enable T cells to recognize and act against a given tumor antigen, bypassing the need for MHC presentation, which is necessary for recognition by the TCR [205]. CARs are engineered molecules composed of four main components (Figure 4): one single-chain variable fragment (scFv), derived from a monoclonal antibody, which binds to the antigen of interest, conferring specificity; the hinge or spacer, which gives support and flexibility to the scFv; a transmembrane domain; and one or more domains of intracellular signaling, responsible for cell activation [206]. In fact, this last component is used to classify the CARs in distinct generations, depending on the number of costimulatory domains they carry [206].

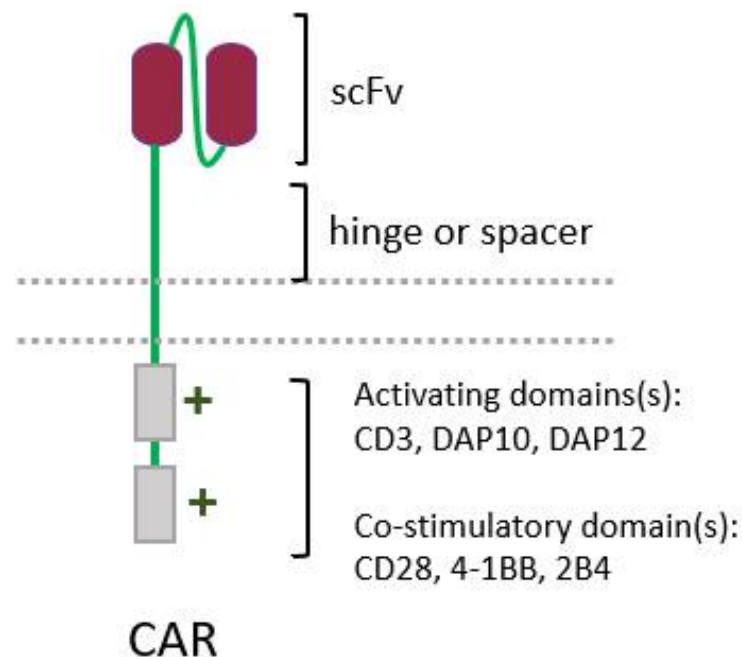


Figure 4. Simplified structure of a conventional chimeric antigen receptor (CAR), showing its four main elements: a single-chain variable fragment (scFv), the hinge, and the intracellular activating domain(s).

However effective they may be against neoplastic cells, CAR-T cells have some characteristics that hinder their efficacy. A significant drawback is that they still carry their own TCR, meaning that allogeneic T cells cannot be used to avoid GvHD. The use of NK cells to carry the CAR, on the other hand, would bypass this obstacle [159,207–209]. Initially, NK cell CARs displayed the same structure as those optimized and carried by T cells. However, although some costimulatory domains are common to NK and T cells—such as CD3 ζ - and 4-1BB—other domains used in CAR-T cells, such as CD28, are not present in NK cells [210–212], meaning that the “net signaling” by these receptors had to be determined. The first-generation CAR-NKs only had signaling domains derived from CD3 ζ [212–214]. Afterwards, in addition to CD3 ζ , other costimulatory domains—such as CD28 [215,216], 4-1BB [217,218], 2B4 [218,219], and DNAM1 [219]—were added, giving rise to the second and third generations of CAR-NKs [212,220]. Curiously, even the CD28 costimulatory domain, developed for CAR-T cells, was also capable of triggering antitumor activities when used in CAR-NK cells. Illustrating the possibility and need for continuous improvement of CAR engineering, a study using anti-CD5 CARs showed that the NK-specific costimulatory domain 2B4 led to a superior performance when compared with the 4-1BB domain, even though 4-1BB is a domain present in both T and NK cells [218]. Therefore, the construction of CARs using other NK-specific domains can be a strategy to modulate the effects of CAR-NK therapy. Accordingly, adaptor molecules other than CD3 ζ —including DAP10 [221] and DAP12 [222]—have already been tested, given that CD16, NKp30, and NKp46 receptors signalize via CD3 ζ , NKG2D does so via DAP10 and KIR, and NKG2C and NKp44 do so via DAP12 [211,223]. Indeed, CARs bearing a DAP12 domain displayed improved antitumor activities in comparison to CD3 ζ -based CARs [222,224], but CARs with CD3 ζ were superior to those with DAP10 [221].

Thus, CAR-NK cells offer new possibilities of modulation for CAR-based strategies and, consequently, have the potential to overcome some of the hurdles found in CAR-T cell therapies. Indeed, while CAR-T therapies frequently cause high-grade adverse events—such as cytokine release syndrome and neurotoxicity [207,225,226]—these events are less frequent in CAR-NK therapies [159,207–209]. This is most likely due to the different cytokine release profile induced by these cells: CAR-T cells induce the release of pro-inflammatory cytokines, such as TNF- α , IL-1, and IL-6 [207]; in contrast, CAR-NKs, commonly induce the release of IFN- γ and GM-CSF [227]. As already mentioned, CAR-NK

therapy also has the advantage of allowing the use of allogeneic cells without the occurrence of GvHD [157,228–230], overcoming this challenge described in CAR-T allogeneic therapies. On-target/off-tumor toxicity is also less frequent due to the limited persistence of CAR-NK cells in circulation [231]. Very significantly, the possibility of allogeneic CAR-NK therapy expands the range of NK sources that can be used, prompting a faster development of treatments. This is a great advantage in comparison to autologous therapy [211], in addition to being a more cost-effective strategy [208]. Hence, the safety profile and viability of CAR-NK therapy seem to be superior to those observed in CAR-T therapy, which would enable a reduction in the costs of this rather expensive treatment modality [211,212].

Furthermore, CAR-NK cells still preserve other activating mechanisms of NK cells [232], thus remaining able to target tumor cells via CAR-independent mechanisms. This further increases the efficiency of the elimination of neoplastic cells, because even if they no longer express the target tumor antigen—a common escape mechanism observed in CAR-T therapies [233,234]—or if the tumor has a heterogeneous antigen expression, CAR-NK cells will still be able to attack these tumor cells [235].

CAR-NK cell strategies are already being tested at clinical and preclinical scale for a variety of solid and hematologic malignancies, including CD19 for B-cell lymphomas [159], CD33 for acute myeloid leukemia [208], CD138 for multiple myeloma [236], HER2 for glioblastoma [237], mesothelin for epithelial ovarian cancer [238], and NKG2DL for colorectal cancer [224], EGFR for many solid tumors [239–242], ROBO1 for pancreatic carcinoma [243], glioma, and neuroblastoma [244], among others. Despite the growing interest in CAR-NK therapy, the greatest focus and most promising results are still observed for hematological cancers; solid tumors remain a difficult target, for reasons including their immunosuppressive tumor microenvironment. For glioblastoma, CAR-NK efforts are mainly focused on targeting EGFRvIII, EGFR, and HER2 [235].

The EGFR protein is minimally expressed or even absent in healthy cerebral tissue, but is overexpressed in 40–60% of glioblastoma tumors [245]. Approximately 20–40% of EGFR-expressing tumors also express the EGFRvIII variant form [246], which is the most common mutation occurring in GBM [247], and confers greater immunogenicity [215]. Murakami et al. (2018) [241] evaluated the engineering of the KHYG-1 NK cell line with an EGFRvIII-specific CAR, and observed the induction of a strong and significant inhibition of EGFRvIII-expressing U87MG GBM cell line growth, through the triggering of apoptosis. A further study by the same group was conducted in 2020 [248], showing the in vitro secretion of RANTES and—when recognition of U87MG EGFRvIII⁺ tumor cells by CAR-NK cells occurred—a significant secretion of TNF- α , IFN- γ , IL-2, and IL-6 cytokines. However, the treatment of immunodeficient mice bearing the specific target cell apparently failed to control tumor progression, and resulted in greater tumor occupancy, in comparison to PBS-treated mice. Since the immunohistochemistry analysis revealed an increase in necrotic cells at the tumor site, the authors suggest that observed growth in treated mice could be due to pseudoprogression, where an expansion of tumor volume due to an increased inflammatory infiltrate would mimic real tumor progression.

As CAR-NK immunotherapy strongly relies on the effective migration of these cells towards the tumor, Müller et al. (2015) [249] compared the function of EGFRvIII-specific CAR-NK cells with similar CAR-NK cells that were also engineered to contain the CXCR4 chemokine receptor. The incorporation of CXCR4 led to specific chemotaxis to CXCL12/SDF-1 α -expressing GBM U87MG cells, in addition to significantly increasing the survival and even leading to complete remission of tumor xenografts in mice, in comparison to CAR-NK cells without CXCR4 co-expression.

Given the possibility of heterogeneous EGFRvIII expression in GBM, CAR-NK therapy with specificity to both EGFR and EGFRvIII has been addressed. Han et al. (2015) [240] showed that NK-92- or NKL-derived CAR-NK cells with specificity to both of these antigens displayed a robust increase in cytolytic capacity and IFN- γ secretion, in an EGFR-dependent manner, when co-cultured with GBM cell lines or patient-derived GBM stem cells (GSCs); furthermore, they efficiently suppressed tumor growth, and prolonged the survival of mice

with orthotopic GBM xenografts. Genßler et al. (2015) [215] tested NK-92 cells expressing CAR with specificity to EGFR, EGFRvIII, or a shared epitope between these antigens, showing high NK cell cytotoxicity and specificity against primary GBM cells that expressed the antigens, as well as against GBM cell lines expressing EGFR and/or EGFRvIII. Interestingly, the administration of double-specific CAR-NK cells to NSG-immunodeficient mice transplanted with intracranial GBM xenografts led to prolonged survival, and prevented tumor escape by antigen loss more efficiently, when compared to monospecific CAR-NK cell therapy.

The human epidermal growth factor receptor 2 (ErbB2/HER2) is a member of the EGFR family that is expressed in up to 80% of GBM cases, but not in normal neurons or gliocytes [250], and whose overexpression is correlated with earlier patient mortality [251,252]. Zhang et al. (2016) [237] evaluated the effect of NK-92/5.28.z cells—which are ErbB2-specific CAR-NK cells—both in NSG immunodeficient mice bearing orthotopic human GBM xenografts, and in C57BL/6 immunocompetent mice with murine subcutaneous or orthotopic GBM cells expressing ErbB2. The NK-92/5.28.z cells were able to lyse all of the ErbB2-positive cells analyzed in vitro and, after repeated intratumor injections, significantly prolonged the symptom-free survival of NSG mice bearing orthotopic xenografts of an ErbB2-expressing GBM in vivo. In C57BL/6 mice, the local therapy with NK-92/5.28.z cells eradicated the tumor in 4 out of 5 mice with subcutaneous tumors and in 5 out of 8 with orthotopic tumors. CAR-NK-cell-treated animals that eradicated the tumor rejected a rechallenge with GBM cells injected into the other cerebral hemisphere 120 days after the initial therapy, indicating long-term protection against tumor rechallenge at distant sites. Interestingly, rechallenged animals that rejected the tumor had significant levels of IgG antibodies against GBM cells [237].

A phase I clinical trial, CAR2BRAIN (NCT03383978), has been underway since 2017 at the Johann W. Goethe University Hospital, in Germany, to evaluate the safety profile, tolerability, maximum tolerated dose (MTD), maximum feasible dose (MFD), and antitumor effects of NK-92/5.28.z cell therapy against relapsed or refractory HER2-positive GBM in patients undergoing biopsy or tumor resection surgery. NK-92/5.28.z cells are repetitively injected in the resected tumor cavity, or centrally inside the tumor [253]. This is the first and only CAR-NK clinical trial registered on Clinicaltrials.gov analyzing CAR-NK therapy in patients with GBM.

The fact that only one clinical trial is investigating the potential of CAR-NK therapy in GBM, despite its clear potential, highlights the challenges still to be solved before its experimental results can be translated into clinical applications. One of these challenges is related to the efficacy of transduction methods used to insert the CAR receptor gene. The retroviral or lentiviral transduction in primary NK cells has poor effectiveness [254], but new approaches to overcome this difficulty are being developed, as is the case of the baboon envelope pseudotyped lentivirus (BaEV-LV) [255] and vectofusin-1 [256]. Currently, lentiviral transduction is the most used method in studies regarding CAR-NK for glioblastoma, since it appears safer than retroviral vector-mediated transduction [257]. Non-viral transduction alternatives are also being studied: electroporation leads to a product with short therapeutic window [211] and, thus, does not seem suited for clinical applications; the efficacy of transposons [258] and CRISPR/Cas9 [259] remains a work in progress. Some of the other challenges, already mentioned in the context of NK cell adoptive transfer, include the limited in vivo persistence after infusion, and limited proliferative potential.

For the treatment of GBM, both CAR-NK and CAR-T approaches still face additional challenges to overcome, given that this cancer is a solid tumor located in the central nervous system, which is one of the most critical, dynamic, and difficult-to-access regions of the body. One way to improve the in vivo persistence of CAR-NK cells in the suppressive tumor microenvironment could be by inducing the expression of stimulatory cytokines, such as IL-2, IL-7, IL-15, and IL-21. As we will better describe in the next section, these cytokines play a crucial role in promoting NK cell proliferation and survival [260]. Xu et al. (2019) [261] studied the co-expression of G2D antigen-specific CAR

and IL-15 in NKT cells both in vitro, and in immunodeficient mice with neuroblastoma xenografts, observing that both NKT in vivo persistence and tumor control were improved. Liu et al. (2018) [216] also tested a similar strategy with umbilical-cord-blood-derived NK cells engineered to express a CAR specific to CD19, an IL-15 transgene, and an inducible caspase-9-based suicide gene (*iC9*), showing constitutive IL-15 expression by NK cells and functional improvement. The *iC9* gene's pharmacologic activation promoted a fast NK cell depletion, which could be an interesting tool to use in the face of eventually less tolerable toxicities. Other strategies to enhance CAR-NK activity, currently under study, include the engineering of TGF- β receptors without their intracellular domains, in order to avoid the transduction of inhibitory signals [262] or, conversely, substituting these with costimulatory domains to promote NK cell activation [262,263]. These other approaches offer the prospect of eventually overcoming the immunosuppressive effect of the tumor microenvironment (TME) and obtaining more effective CAR-NK cells for the treatment of GBM.

5.3. Cytokine Therapy

Cytokines influence all aspects of the immune response, and several have the potential to improve the function, proliferation, and survival of NK cells, and therefore can be used in NK-based immunotherapy, either by systemic administration or by in vitro incubation with NK cells in the process of generating the adoptive cells. IL-2, IL-12, and IL-15 are the main cytokines being explored in this context.

IL-2 was the first cytokine to be used in a clinical setting, aiming at what one could consider an improvement of the cytotoxic activity of NK cells against cancer, through the phenomenon of lymphokine-activated killer (LAK) cells [264]. Though IL-2 also affects the function of other cells—such as T and B lymphocytes—and, thus, the LAK phenomenon cannot be attributed solely to its action upon NK cells, they seem to be the major effectors among the LAK cells [265]. IL-2 induces the proliferation of NK cells, enhances their cytolytic capacity [266], and refines their signaling through activating receptors [156]. However, when administered in high doses, IL-2 induces severe adverse effects [264,267,268], in addition to promoting the expansion of CD25⁺ T_{reg} cells, which have immunoregulatory effects and compete with NK cells for binding with IL-2 [269,270]. To overcome the toxicity of IL-2, it can be administered in lower doses [158], and to improve its potential for immunotherapy, mutant forms of IL-2 with modified affinity for its various receptors have been generated, either with augmented affinity to the IL-2R β receptor, signaling effectively without the need for IL-2R α (CD25), or even having different degrees of affinity to IL-2R γ , thus having a range of signaling from full agonism to antagonism [271,272]. Moreover, IL-2 can also be used during the ex vivo expansion of NK cells [164], or after the adoptive NK cell transfer, in an effort to improve the survival and function of these cells in vivo [158,201,273–275]. For the GBM therapy, studies such as those conducted by Colombo et al. (2005) [276] and Qiao et al. (2018) [277] evaluated the combination of IL-2 with other therapeutic strategies, but mainly focusing on the effect promoted on T cells. Clinical studies involving the combination with other therapeutic strategies—such as expression of IL-13, resistance to glucocorticoids, and stem cell transplantation—have also been conducted for the treatment of brain tumors (NCT01082926, NCT00014573).

IL-15 is another cytokine closely related to the promotion of NK cell proliferation and survival [278–280], and has similarities with IL-2 regarding the binding to the receptor, the subsequent signalization, and biological activity [269,281]. However, IL-15 preferentially stimulates CD8⁺ T lymphocytes and non-terminally differentiated NK cells [282,283], without promoting the expansion of T_{reg} cells [284]. IL-15 signaling can occur through cis-presentation or trans-presentation, the latter being the most common. IL-15 trans-presentation via IL-15R α promotes a higher immunostimulatory capacity in comparison to IL-15 alone [285], and the use of modified IL-15/IL-15R α complexes [286,287] or the development of fusion proteins [288–290] leads to better results in comparison to rIL-15—for example, by enhancing its half-life [291]. The first clinical study using rIL-15 via intravenous infusions (bolus) for the treatment of cancers led to a considerable expansion

of NK cells and TCD8⁺ cells, but with an intense cytokine secretion and dose-dependent toxicity [278]. Since then, several clinical studies have been conducted in order to better evaluate the administration of IL-15 alone [279,292–294] or in combination with other therapies [295] in different cancers.

In glioblastoma, IL-15 can have effects in different types of therapy [296–298], and regarding its effects in NK cells, Ma et al. (2021) [299] saw that the in vitro administration of a herpes-simplex-1-based oncolytic virus (OV) expressing the human IL-15/IL-15R α sushi domain fusion protein (named OV-IL15C) was able to promote the secretion of soluble IL-15/IL-15R α complexes by the infected GBM cells, inducing tumor cytotoxicity and greater survival of NK and TCD8⁺ cells. In animal models, this therapy led to increased survival and inhibition of tumor growth in the presence of TCD8⁺ cells. When in combination with EGFR CAR-NKs, the therapy increased tumor cell death in vitro, and in vivo it promoted the suppression of tumor growth and greater survival in comparison to monotherapy, leading to higher intracranial infiltration and activation of NK cells and TCD8⁺ lymphocytes, as well as elevated persistence of the CAR-NK cells. Mathios et al. (2015) [300] observed that the administration of the IL-15 superagonist complex ALT-803 in a murine model led to greater animal survival and durable antitumor response, but the simultaneous depletion of TCD4⁺ and TCD8⁺ cells abrogated the benefit in survival, whereas the depletion of NK cells alone did not affect the survival, suggesting that in spite of the presence of NK cells being detected infiltrating the tumor, their actions might not be crucial to the effect of this therapy in GBM. Interestingly, however, in other tumor models—such as bladder cancer—NK cells were responsible for the antitumor effect of the therapy with ALT-803 [301]. This is an observation that likely points to the very peculiar scenario of GBM, and which could help us to better understand its complex microenvironment. Another effect of IL-15 that may prove to be of translational value is that the antitumor potency of extracellular vesicles derived from NK cells also seems to be enhanced by priming with IL-15, leading to higher cytolytic activity and greater expression of molecules associated with NK cell cytotoxicity [302].

Another promising cytokine for cancer immunotherapy is IL-12, which presents several effects, being able to stimulate the production of cytokines by NK cells—such as IFN- γ , GM-CSF, and TNF- α [269]—to augment the cytolytic capacity of NK cells and TCD8⁺ lymphocytes, to promote the polarization of the TCD4⁺ lymphocytes to a Th1 profile [303], and to increase the ADCC against tumor cells opsonized with antibodies [304]. IL-12 has a narrow therapeutic window for its systemic administration [305]. Further studies have evaluated the effects of lower doses [306,307], the use of modified cytokines [308], and gene therapy or genetic engineering [269] as ways to reduce the adverse effects, in addition to evaluating the combination with other therapies [305], leading to some promising results. IL-12 therapy has already been tested for GBM in several studies [309–316], alone or in combination with other types of therapy. Among the studies that directly evaluated the effect of IL-12 therapy on the antitumor activity of NK cells in GBM, Chiu et al. (2009) [313] evaluated the effect of the administration of recombinant adeno-associated virus (rAAV) encoding IL-12 in nude mice with implantation of the DBTRG glioblastoma cell line. This treatment induced a substantial increase in the expression of IL-12, and an increase in the number of activated NK cells, with augmented cytotoxic activity and a decreased tumor growth rate compared to the control group.

Other cytokines, such as IL-18 and IL-21, also affect NK cells. IL-21, in addition to having effects on T and B lymphocytes [269], promotes NK cell survival and maturation, and induces proliferation, but can also lead to their apoptosis [317]. Preclinical studies demonstrated the promotion of antitumor activity by IL-21 [318,319] and an increase in NK-cell-mediated antibody-dependent cellular cytotoxicity (ADCC) [320]. Clinical studies demonstrated good overall tolerability, alone or in combination with other agents, with modest but still promising results [321–326]. In glioblastoma, IL-21 gene transfer in mice resulted in a greater antitumor response from NK cells [327]. The use of IL-21 in the ex vivo stimulation of CD8⁺ and $\gamma\delta$ T lymphocytes before adoptive cell transfer therapy has

also been assessed [328,329]. IL-18 can assist in the survival of NK cells and enhance their functions, acting in synergy with IL-12 to increase IFN- γ secretion [330–332]. In fact, pre-activation of the NK cells used for ACT therapies with IL-12, IL-15, and IL-18 is capable of improving the persistence, function, and antitumor activity of these cells in mice, when compared to the pre-activation with IL-2 or IL-15 alone [333].

5.4. Monoclonal Antibodies, Killer Cell Engagers, Immunocytokines, and Other Antibody-Based Strategies to Boost NK Activation

A broad range of antibody-based therapies have been tested and approved for the treatment of various cancers. Since some of them can trigger NK cell activation, they can be used to overcome the dysfunction and immunosuppressed status of the patients' NK cells, or even to improve adoptive cell therapy efficiency. One strategy consists of the use of monoclonal antibodies (mAbs) targeting tumor cells, rendering them susceptible to ADCC—a process that can be mediated by NK cells [334]. The cetuximab antibody, which blocks EGFR and EGFRvIII signaling [335], already has a confirmed effector mechanism through ADCC against GBM cells [336], and its activity in patients with GBM is under investigation [337]. To enhance ADCC, another target for modulation is the Fc portion of antigen-specific monoclonal antibodies, which can be engineered [338–340] or glycosylated [341–343]. Schmied et al. (2019) [344] evaluated the effect of S239D/I332E amino acid exchange in an mAb reactive to CD133 (293C3-SDIE) in a preclinical model of colorectal cancer. This modified mAb had an increased CD16 affinity and induced a robust NK cell activation, triggering their degranulation, IFN- γ production, ADCC activity, and killing of the tumor cells [344]. Clinical trials have addressed Fc modifications of mAbs for many cancers, including acute myeloid leukemia (the recently concluded NCT02789254), B-cell acute lymphoblastic leukemia, and breast cancer, where they demonstrated good tolerability but reduced effectiveness as a monotherapy [345] (NCT01828021). This scenario suggests that, at least for these mentioned approaches, multitarget therapy could be a more effective option.

Combined regimens of monoclonal antibody therapy with costimulatory cytokines—such as IL-2, IL-12, IL-15, IL-18, and IL-21—are another approach to improve ADCC activation of NK cells [44,269]. This combination can be also made through the use of immunocytokines, which are composed of a monoclonal antibody linked to a cytokine, aiming to assist in the activation of immune cells. By doing this, the antibody can bind to a tumor antigen, promoting the directed delivery of the cytokine into the tumor microenvironment, thus preventing the adverse events associated with systemic administration of cytokines while also activating tumor-infiltrating leukocytes, including NK cells [346]. For GBM, Weiss et al. (2020) [347] tested the immunocytokine strategy by linking an L19 antibody, which is specific to a tumor-associated epitope of extracellular fibronectin (expressed in the tumor stroma of most brain cancers, but generally not in healthy tissues), to IL-2, IL-12, or TNF- α , and administering the immunocytokine in immunocompetent mice bearing GL-261 or SMA-560 glioma cell lines. The mAb L19 achieved high concentrations in the tumor microenvironment and, when linked to any of the cytokines and injected intravenously, induced tumor shrinking in the animals. L19-mTNF or L19-mIL-12 treatments also promoted the release of other pro-inflammatory cytokines and accumulation of lymphocytes in the tumoral niche, in addition to significantly improving survival. Conversely, L19-mIL-2 therapy had modest effects on the outcome, and was deemed to depend on adaptive immunity since, when applied to RAG-deficient mice—who lack T, B, and NKT cells—it lost its therapeutic effects. L19-mIL-12 therapy increased TCD4⁺ and TCD8⁺ but also NK infiltration, in addition to activation of the latter in mice bearing both types of glioma cell tumor; L19-mTNF treatment mainly improved NK cell activity. The administration of L19-mTNF or L19-mIL12 immunocytokines in combination with radiotherapy and chemotherapy demonstrated synergistic effects in murine GL-261 glioma models. Given these promising preclinical results, the same group initiated a phase I/II clinical trial in 2018 to evaluate the effects of the systemic administration of a fully human

L19-TNF immunocytokine in patients with grade III or IV and IDH1 wild-type gliomas undergoing their first relapse (NCT03779230). Until now, this therapy has been safe, and correlated with increased tumor ischemia and necrosis. A biopsy sample derived from a patient with progressive disease showed high levels of CD4 and CD8 T cells in the tumor after the treatment, in addition to increased staining with apoptosis markers.

Another possible strategy aiming at the improvement of NK cell function is the development of bi-specific or tri-specific killer cell engagers (BiKEs or TriKEs), which are composed of a single-chain variable fragment (scFv) of an antibody connected to another one (BiKE) or two (TriKE) scFv portions derived from antibodies with different binding specificities [348,349]. In this way, several fragments can be arranged to compose multifunctional molecules. For example, in order to promote NK-cell-mediated tumor cell death through the formation of immunological synapses and ADCC [350], it is possible to make BiKEs with specificity to a tumor antigen of choice and to the CD16 expressed in the NK cells. Other activating receptors can be targeted, such as NKG2D and NKp46 [348]. The TriKEs can use the same strategy, but with the benefit of an additional scFv domain, allowing the engagement of more than one receptor. Interestingly, CD16- and NKp46-reactive TriKEs were more capable of mediating NK cytotoxicity against tumoral cells in comparison to the mixture of specific BiKEs to each receptor [348]. One variation of this approach is the replacement of the scFvs with a cytokine, such as IL-15 [351], with the purpose of promoting greater expansion, viability, function or in vivo persistence of the NK cells [16,352]. BiKEs and TriKEs have other advantages, such as providing a stronger interaction with anti-CD16 than the one observed in natural CD16-Fc antibody interactions [353], having reduced size (50–75 kDa) in comparison to bi- and tri-specific antibodies (300–450 kDa) [354], which leads to a better biodistribution needed for the treatment of solid tumors, in addition to being non-immunogenic [350]. BiKEs and TriKEs have already been developed and evaluated for a broad variety of antigens from different tumors, such as CD30 for Hodgkin's lymphoma [355,356], HER2 for breast cancer [357–359], CD19 for non-Hodgkin's lymphoma cells [360–362], CD33 or CD33 together with CD123 for acute myeloid leukemia [363,364] (NCT03214666), EpCAM for carcinomas [365], CD133 for colorectal cancer [366], EGFR for carcinomas [295,367,368], and B7-H3 for a variety of solid tumors [369]—but not yet for GBM. Further alternatives that have been already discussed in the literature include the blockage of immune checkpoint receptors via scFvs, and scFv blocking of TGF- β or ADAM-17—the later, a disintegrin and metalloproteinase involved in CD16 shedding [349].

Yet another strategy with a similar rationale is the use of recombinant immunoligands, which are fusion proteins containing a variable portion (scFv) with specificity to a tumor antigen fused to the C-terminal portion of the NK-activating ligand. Strategies under study include, for example, immunoligands containing the portion of the ligand ULBP2, which activates the NKG2D receptor, or the B7H6 molecule, which activates the NKp30 receptor. In this way, the recognition of the tumor cell and the activation of the NK cell are facilitated [370,371].

Blocking inhibitory receptors displayed on T and NK cells using monoclonal antibodies (checkpoint blockages or checkpoint inhibitors) might also bring good results for GBM. Indeed, anti-CTLA-4 (i.e., ipilimumab), anti-PD1 (i.e., nivolumab), and combined therapies with these two antibodies [372,373] have brought very good results in different cancers, and one could say that they have changed the clinical perspective on immunotherapy as a whole. For patients with recurrent GBM and undergoing standard therapy, who were enrolled in phase I of the Checkmate 143 clinical trial (NCT02017717), treatment with ipilimumab showed milder adverse effects than its combination with nivolumab, although both treatments were found to be tolerable [374]. Subsequently, the same study provided the results of the phase III trial, including 369 randomized individuals. The safety profile was consistent with known symptoms of the therapies, mainly comprising hypertension and fatigue; the efficacy analyses showed similar overall survival of both regimens (9.8 and 10 months for nivolumab and bevacizumab, respectively), in addition to prolonged

progression-free survival in the nivolumab group (3.5 vs. 1.5 months, $p < 0.001$). An exploratory analysis suggests that the basal corticosteroid level and the methylation status of the MGMT promoter could have prognostic value, but this claim awaits validation of the results [375]. Recently, Shevtsov et al. [376] showed evidence indicating that the use of checkpoint inhibitors can improve the efficacy of NK-cell-based immunotherapy for GBM. In this case, NK cells activated with IL-2 and the TDK peptide (derived from Hsp-70) displayed a more potent cytolytic effect against GBM cells (GL261) and other tumors in vitro when associated with an anti-PD1 antibody. The best in vivo outcome in immunocompetent mice carrying GL261 GBM cell line tumors was observed in anti-PD1 + NK combined therapy, considering tumor shrinkage and overall survival in comparison to single regimens [376]. As for mice with lung cancer (A549) and treated with human activated NK cells and humanized anti-PD1, there was a prominent increase in survival and the highest degree of NK cell and TCD8+ lymphocyte infiltration in the tumor when compared to the other groups [376], strongly suggesting that PDL1/PD1 interaction can be advantageous in combination with NK cell adoptive therapies. However, the efficacy of the PD1/PD-L1 axis in NK immunotherapy was also contested by preclinical data, given no additional effects of PD1 blockade in terms of in vitro killing of GBM lines or overall survival in a murine immunodeficient model bearing U87MG-derived subcutaneous xenotransplants [111].

In addition to the previous strategy, the blockage of other inhibitory axes has been tested. Antibodies that block the NKG2A receptor (e.g., monalizumab) [377] or inhibitory KIR receptors, such as KIR2DLs (1-7F9) [378,379], have already been assessed in humans and other animals. These blockages are advantageous because they exceed the suppression caused by the tumor on autologous NK cells and T lymphocytes via class I MHC molecules, which is known to occur in GBM. The combination of monalizumab and cetuximab (anti-EGFR) potentiates the NK cells and LTCD8 ADCC in vitro, and showed safety and potency for disease control in preclinical models and in patients with head and neck squamous-cell carcinoma (SCCHN) [377]. Here, once more, the combination of different immunotherapeutic strategies seems to promote synergistic actions, recapitulating what one would expect from a “physiological” immune response, which is always dependent on the integration of various effector mechanisms. Additionally, and in the same direction, other NK-cell-inhibitory receptors—such as T-cell immunoglobulin and mucin domain 3 (TIM-3), and lymphocyte activation gene-3 (LAG3)—are now being investigated, alone or in combination with other therapeutic approaches, for the immunotherapy of a wide spectrum of cancers [51], including GBM (NCT03493932, NCT02658981, NCT03961971).

One alternative strategy to the blockage of NK cell checkpoints is the use of the CRISPR/Cas9 genetic editing system. Analogous to the aforementioned antibody-based approaches, CRISPR/Cas9 could be a powerful tool in adoptive therapy for impairing NK cell inhibition and, consequently, boosting their activation and antitumor action. The disruption of checkpoint molecules by genetic editing in T cells using CRISPR/Cas9, addressing targets such PD-1 and CTLA-4 pre-clinically, showed the potential of its clinical exploitation [380–382]. In the same direction, clinical trials have reinforced the feasibility and safety of T-cell adoptive therapy in the treatment of patients with non-small-cell lung cancer [383], refractory cancers [384], and esophageal cancer (NCT 3081715, completed, not published). Other trials with the same objective are in progress (NCT0374796, NCT 03545815). In this scenario, some targets have been recently searched in NK cells, alone or in combinatorial settings (multiplex), as a proof of concept for the molecular function, methodological efficiency, and feasibility of NK immunotherapy designs, including TIGIT, CD96, DNAM-1, NKG2A, and TIM-3 [259,385,386], along with other regulators of NK cell activity [173,387].

Indeed, the selective CRISPR/Cas9-driven disruption of PD-1 in human primary NK cells enhanced the production, degranulation, and target cell apoptosis of IFN- γ against different tumoral cell lines with variable PD-L1 expression [388]. Regarding specific studies of GBM, Morimoto et al. (2021) [386] separately tested the knockout of two exons of the

TIM3 gene in primary human NK cells, via the electroporation of the Cas9-guided RNA ribonucleoprotein complex. This methodology resulted in selective target mutation and efficient in vitro inhibition of the growth of T98G and/or LN-18 GBM cell lines [386]. On the other hand, CRISPR/Cas9-edited CD96^{-/-} human NK cells did not display significant alterations in IFN- γ and TNF- α production, degranulation, or cytotoxic activity following stimulation with the U261MG CD155⁺ GBM line, in contrast to other tumor cell lines used. These observations, however, do not necessarily imply that CD96 NK knockout is ineffective, since primary lines and in vivo studies would be required for proper validation [385].

In addition to the most common immune checkpoints, other regulators have been linked to hypofunction of tumor-suppressed NK cells, indicating possible candidates for targeting in immunotherapy settings. This is the case of CD9 or CD103 TGF- β -inducible tetraspanins (α v-integrin ligands), for example. In a recent study, Shaim et al. (2021) [173] elucidated the role of α v-integrin interaction and subsequent TGF- β production by human GBM stem cells as evasion strategies employed to induce NK cell dysfunction. The knockout of CD9 or CD103 in human NK cells prevented immune dysfunction after GBM stem cell co-culture, partially restoring the cytotoxic capacity of NK cells against K-562 target cells in vitro; the cytotoxicity was completely restored in the case of the double-knockout [173]. Other important preclinical studies have focused on the CIS intracellular protein, which negatively regulates IL-15 signaling in murine and human NK cells [389,390]. CRISPR/Cas9-directed deletion of the cytokine-inducible SH2 gene (*CISH*) in murine NK cells resulted in hyperresponsiveness of *CISH*^{-/-} NK cells subjected to IL-15 stimulation, with increased expansion rates in comparison with wild-type NK cells, enhanced cytotoxicity towards tumor cells in vitro, and reduction in metastasis in melanoma-, prostate-, and breast-cancer-transplanted mice [389]. Additionally, based on preliminary preprint data, the importance of CIS seems to be reproducible in human NK cells using CRISPR/Cas9-based loss-of-function in vitro experiments [390].

Before their translation, however, CRISPR/Cas9 approaches must overcome technological hurdles, such as the means of delivering Cas9 into the cell. Lentiviral transfection has poor transfection efficiency, even at high viral titers [391] and both primary and NK-92 line NK cells are relatively resistant to plasmid-based editing, yielding poor efficiency and cytotoxicity [382,392]. However, nucleofection of preassembled Cas9-guided RNA complexes was reported as a relatively efficient and minimally toxic method [259,385,392]. Nevertheless, methodological optimization may lead to application of CRISPR/Cas9-based checkpoint knockout in NK cell clinical trials, thus opening other possibilities of treatment for cancer patients.

5.5. Tumor Sensitization

The efficacy of adoptive therapies might be increased by the previous sensitization of the GBM cells to the cytotoxicity mediated by the NK cells. The proteasome inhibitor bortezomib (BTZ), which is an antineoplastic agent already approved and commercialized for the treatment of multiple myeloma and mantle-cell lymphoma [393], is an eligible candidate for this function; data regarding its relation to the anti-GBM activity of NK cells have been reported recently by Navarro et al. (2019) [161] and Luna et al. (2019) [394]; both studies showed that primary GBM cell lines, when treated with BTZ, had a significantly increased membrane expression of ligands for the NK-activating receptor NKG2D, and also for the death receptor TRAIL-R2. Furthermore, Navarro et al. [161] showed that BTZ could make GBM cells more susceptible to NK-mediated lysis via TRAIL, since at least some of the GBM cell lines tested showed greater death rates when treated with the combination of BTZ and NK cells than when treated with NK cells alone. However, in humanized mice with patient-derived GBM tumors, no statistically significant differences were noted between the intralesional monotherapy with autologous NK cells and the combined therapy with BTZ, even though the only two animals that remained alive by the 124th day were the ones that received the combined NK + BTZ therapy. The authors explained this failure as being the result of the toxic effect of BTZ on NK cells observed in vitro [161]. On the other hand,

Luna et al. (2019) [394] used intralesional therapy with heterologous NK cells after the systemic administration of BTZ in mice with the U87MG cell line tumors. This therapy led to a significant decrease in tumor volume in comparison to the NK therapy or BTZ alone, also showing the longest effect in the control of tumor growth. Another potential effect of BTZ demonstrated *in vitro* is the induction of GBM stem cells' susceptibility to NK-mediated lysis, which would be a very interesting effect for tumor control [394].

Another potential agent is the histone deacetylase inhibitor (HDACi) trichostatin A (TSA) [395]. In addition to its antineoplastic direct effects against a fraction of the GBM cells, through the promotion of acetylation and cell death, TSA was also able to induce the expression of ligands for the NKG2D- MIC-A and ULBP2- receptors, at both protein and mRNA levels, making these cells susceptible to NK-mediated lysis via TRAIL. The blockage of NKG2D with monoclonal antibodies significantly reduced the lysis effect, evidencing its role in this setting. Further confirming the role of NK cells in the antineoplastic effects of TSA, depletion of NK cells reduced GBM susceptibility to TSA treatment, both *in vitro* and *in vivo* [395].

Significantly, temozolomide (TMZ), which is used in the standard therapy for GBM, has also been proven to induce the expression of NKG2D (ULBP2) ligands on the surface of GBM cells, sensitizing them to $T\gamma\delta$ lymphocyte killing via both NKG2D and TCR [396]. Specifically concerning the synergistic effect of TMZ and activated NK cells, inhibition of GBM growth *in vitro*, in a cell-line-dependent manner, was previously reported, but without additional effects on tumor cell apoptosis and senescence [165]. Nevertheless, the administration of TMZ was concomitant—not before NK exposure—limiting the evaluation of the occurrence of prior tumor sensitization. Therefore, the sensitization activity of TMZ to NK cell killing should be investigated in further studies.

Given the cytotoxic function of these chemotherapeutic agents on NK cells, their use might prove to be more effective in adjuvant settings, with administration after the standard GBM treatment, but prior to adoptive transfer of NK cells. Nevertheless, additional studies with these or other chemotherapeutic agents may unveil treatment regimens capable of both directly killing GBM cells and potentiating their sensitivity to immune effectors, such as NK cells.

6. Conclusions

Despite the constant efforts over the past decades, GBM remains a challenging disease, and the prognosis of patients is still poor. Key characteristics of GBM—such as its intrinsic heterogeneity and the strategies it displays to overcome the immune system, which include several mechanisms of NK cell immunosuppression—make it partially resistant to the various antineoplastic treatments employed.

NK cells are lymphocytes of the innate immune system with particularities that could make them advantageous in antitumor responses: their natural cytotoxicity against neoplastic cells, their numerous helper functions and, consequently, their important contribution to immunosurveillance, and to response against established tumors. In agreement with this, NK cell immunotherapy has proven to be a powerful tool for the treatment of various experimental tumors, and initial clinical data from studies in GBM indicate a good safety profile and effectiveness for NK-cell-based immunotherapy.

The arsenal of strategies involving NK cells against GBM cells is certainly not limited to those mentioned here, since an increasing number of studies have been showing promising results, and the therapeutic possibilities are being radically expanded. Future strategies will benefit from screening for biomarkers associated with therapeutic efficacy, the combination of multiple therapeutic approaches and, ideally, personalized treatment regimens, considering the unique features of each patient. Thus, even if the contribution of NK cells for antitumor immune response in GBM patients still requires further study, they definitely appear to be a very promising and interesting component of the immune system's response against GBM, which could be harnessed to improve treatment and, thus, patient care.

Author Contributions: Literature research and writing was conducted by L.H.R.d.S., L.C.C.C., V.J.d.S., J.A.M.B. and G.C.M.E.; text translation into English was done by L.H.R.d.S. and L.C.C.C., followed by corrections by J.A.M.B., who also reviewed the article content, provided assistance, and made helpful suggestions. Figures and tables were created mainly by L.H.R.d.S., with one contribution by V.J.d.S. Planning, organization, editing, and reviewing of textual contents were performed by L.H.R.d.S. All authors have read and agreed to the published version of the manuscript.

Funding: This review article received no external funding. GCME acknowledges support from Conselho Nacional de Desenvolvimento Científico (CNPq) Grant N° 168524/2017-1. JAMB acknowledges support from CNPq Grant N° 308053/2017-6.

Institutional Review Board Statement: Not applicable.

Informed Consent Statement: Not applicable.

Conflicts of Interest: The authors declare no conflict of interest.

References

- Sung, H.; Ferlay, J.; Siegel, R.L.; Laversanne, M.; Soerjomataram, I.; Jemal, A.; Bray, F. Global Cancer Statistics 2020: GLOBOCAN Estimates of Incidence and Mortality Worldwide for 36 Cancers in 185 Countries. *CA Cancer J. Clin.* **2021**, *71*, 209–249. [[CrossRef](#)]
- Wirsching, H.G.; Galanis, E.; Weller, M. Glioblastoma. In *Handbook of Clinical Neurology*; Berger, M.S., Weller, M., Eds.; Elsevier: Amsterdam, The Netherlands, 2016; Volume 134, pp. 381–397. ISBN 9780128029978.
- Stupp, R.; Mason, W.P.; van den Bent, M.J.; Weller, M.; Fisher, B.; Taphoorn, M.J.B.; Belanger, K.; Brandes, A.A.; Marosi, C.; Bogdahn, U.; et al. Radiotherapy plus Concomitant and Adjuvant Temozolomide for Glioblastoma. *N. Engl. J. Med.* **2005**, *352*, 987–996. [[CrossRef](#)] [[PubMed](#)]
- Tran, B.; Rosenthal, M.A. Survival comparison between glioblastoma multiforme and other incurable cancers. *J. Clin. Neurosci.* **2010**, *17*, 417–421. [[CrossRef](#)]
- Ostrom, Q.T.; Gittleman, H.; Liao, P.; Rouse, C.; Chen, Y.; Dowling, J.; Wolinsky, Y.; Kruchko, C.; Barnholtz-Sloan, J. CBTRUS statistical report: Primary brain and central nervous system tumors diagnosed in the United States in 2007–2011. *Neuro-Oncol.* **2014**, *16*, iv1–iv63. [[CrossRef](#)] [[PubMed](#)]
- Perlmann, P.; Holm, G. Cytotoxic effects of lymphoid cells in vitro. *Adv. Immunol.* **1969**, *11*, 117–193. [[CrossRef](#)]
- Rosenau, W.; Moon, H.D. Lysis of homologous cells by sensitized lymphocytes in tissue culture. *J. Natl. Cancer Inst.* **1961**, *27*, 471–483. [[PubMed](#)]
- Rosenberg, E.; Herberman, R.; Levine, P.; Halterman, R.; McCoy, J.; Wunderlich, J. Lymphocyte cytotoxicity reactions to leukemia-associated antigens in identical twins. *Int. J. Cancer* **1972**, *9*, 648–658. [[CrossRef](#)]
- Ozer, H.; Strelkauskas, A.J.; Callery, R.T.; Schlossman, S.F. The functional dissection of human peripheral null cells with respect to antibody-dependent cellular cytotoxicity and natural killing. *Eur. J. Immunol.* **1979**, *9*, 112–118. [[CrossRef](#)]
- Trinchieri, G. Biology of natural killer cells. *Adv. Immunol.* **1989**, *47*, 187–376. [[CrossRef](#)]
- Perussia, B.; Acuto, O.; Terhorst, C.; Faust, J.; Lazarus, R.; Fanning, V.; Trinchieri, G. Human natural killer cells analyzed by B73.1, a monoclonal antibody blocking Fc receptor functions. II. Studies of B73.1 antibody-antigen interaction on the lymphocyte membrane. *J. Immunol.* **1983**, *130*, 2142–2148.
- Grossi, C.E.; Cadoni, A.; Zicca, A.; Leprini, A.; Ferrarini, M. Large Granular Lymphocytes in Human Peripheral Blood: Ultrastructural and Cytochemical Characterization of the Granules. *Blood* **1982**, *59*, 277–283. [[CrossRef](#)] [[PubMed](#)]
- Kiessling, R.; Klein, E.; Wigzell, H. “Natural” killer cells in the mouse. I. Cytotoxic cells with specificity for mouse Moloney leukemia cells. Specificity and distribution according to genotype. *Eur. J. Immunol.* **1975**, *5*, 112–117. [[CrossRef](#)]
- Ljunggren, H.G.; Kärre, K. In search of the “missing self”: MHC molecules and NK cell recognition. *Immunol. Today* **1990**, *11*, 237–244. [[CrossRef](#)]
- Valiante, N.; Lienert, K.; Shilling, H.; Smits, B.; Parham, P. Killer cell receptors: Keeping pace with MHC class I evolution. *Immunol. Rev.* **1997**, *155*, 155–164. [[CrossRef](#)]
- Chiossone, L.; Dumas, P.Y.; Vienne, M.; Vivier, E. Natural killer cells and other innate lymphoid cells in cancer. *Nat. Rev. Immunol.* **2018**, *18*, 671–688. [[CrossRef](#)]
- Xie, G.; Dong, H.; Liang, Y.; Ham, J.D.; Rizwan, R.; Chen, J. CAR-NK cells: A promising cellular immunotherapy for cancer. *EBioMedicine* **2020**, *59*, 102975. [[CrossRef](#)] [[PubMed](#)]
- Carrega, P.; Ferlazzo, G. Natural killer cell distribution and trafficking in human tissues. *Front. Immunol.* **2012**, *3*, 347. [[CrossRef](#)]
- Cerwenka, A.; Lanier, L.L. Natural killer cell memory in infection, inflammation and cancer. *Nat. Rev. Immunol.* **2016**, *16*, 112–123. [[CrossRef](#)]
- Walzer, T.; Bléry, M.; Chaix, J.; Fuseri, N.; Chasson, L.; Robbins, S.H.; Jaeger, S.; André, P.; Gauthier, L.; Daniel, L.; et al. Identification, activation, and selective in vivo ablation of mouse NK cells via NKp46. *Proc. Natl. Acad. Sci. USA* **2007**, *104*, 3384–3389. [[CrossRef](#)]

21. Carlyle, J.R.; Mesci, A.; Ljutic, B.; Belanger, S.; Tai, L.-H.; Rousselle, E.; Troke, A.D.; Proteau, M.-F.; Makrigiannis, A.P. Molecular and Genetic Basis for Strain-Dependent NK1.1 Alloreactivity of Mouse NK Cells. *J. Immunol.* **2006**, *176*, LP-7511–LP-7524. [[CrossRef](#)]
22. Lanier, L.L.; Testi, R.; Bindl, J.; Phillips, J.H. Identity of Leu-19 (CD56) leukocyte differentiation antigen and neural cell adhesion molecule. *J. Exp. Med.* **1989**, *169*, 2233–2238. [[CrossRef](#)]
23. Ritz, J.; Schmidt, R.E.; Michon, J.; Hercend, T.; Schlossman, S.F. Characterization of functional surface structures on human natural killer cells. *Adv. Immunol.* **1988**, *42*, 181–211. [[CrossRef](#)] [[PubMed](#)]
24. Cichocki, F.; Grzywacz, B.; Miller, J.S. Human NK cell development: One road or many? *Front. Immunol.* **2019**, *10*, 2078. [[CrossRef](#)] [[PubMed](#)]
25. Zhang, Y.; Payne, K.J.; Zhu, Y.; Price, M.A.; Parrish, Y.K.; Zielinska, E.; Barsky, L.W.; Crooks, G.M. SCL Expression at Critical Points in Human Hematopoietic Lineage Commitment. *Stem Cells* **2005**, *23*, 852–860. [[CrossRef](#)] [[PubMed](#)]
26. Renoux, V.; Zriwil, A.; Peitzsch, C.; Michaëlsson, J.; Friberg, D.; Soneji, S.; Sitnicka, E. Identification of a Human Natural Killer Cell Lineage-Restricted Progenitor in Fetal and Adult Tissues. *Immunity* **2015**, *43*, 394–407. [[CrossRef](#)]
27. Freud, A.; Yokohama, A.; Becknell, B.; Lee, M.; Mao, H.; Ferketich, A.; Caligiuri, M. Evidence for discrete stages of human natural killer cell differentiation in vivo. *J. Exp. Med.* **2006**, *203*, 1033–1043. [[CrossRef](#)]
28. Scoville, S.; Freud, A.; Caligiuri, M. Modeling Human Natural Killer Cell Development in the Era of Innate Lymphoid Cells. *Front. Immunol.* **2017**, *8*, 360. [[CrossRef](#)] [[PubMed](#)]
29. Lyman, S.D.; Jacobsen, S.E. c-kit ligand and Flt3 ligand: Stem/progenitor cell factors with overlapping yet distinct activities. *Blood* **1998**, *91*, 1101–1134. [[CrossRef](#)] [[PubMed](#)]
30. Robin, C.; Ottersbach, K.; Durand, C.; Peeters, M.; Vanes, L.; Tybulewicz, V.; Dzierzak, E. An unexpected role for IL-3 in the embryonic development of hematopoietic stem cells. *Dev. Cell* **2006**, *11*, 171–180. [[CrossRef](#)]
31. Yu, H.; Fehniger, T.A.; Fuchshuber, P.; Thiel, K.S.; Vivier, E.; Carson, W.E.; Caligiuri, M.A. Flt3 ligand promotes the generation of a distinct CD34(+) human natural killer cell progenitor that responds to interleukin-15. *Blood* **1998**, *92*, 3647–3657. [[CrossRef](#)] [[PubMed](#)]
32. Giri, J.G.; Ahdieh, M.; Eisenman, J.; Shanebeck, K.; Grabstein, K.; Kumaki, S.; Namen, A.; Park, L.S.; Cosman, D.; Anderson, D. Utilization of the beta and gamma chains of the IL-2 receptor by the novel cytokine IL-15. *EMBO J.* **1994**, *13*, 2822–2830. [[CrossRef](#)]
33. Kennedy, M.; Glaccum, M.; Brown, S.; Butz, E.; Viney, J.; Embers, M.; Matsuki, N.; Charrier, K.; Sedger, L.; Willis, C.; et al. Reversible defects in natural killer and memory CD8 T cell lineages in interleukin 15-deficient mice. *J. Exp. Med.* **2000**, *191*, 771–780. [[CrossRef](#)] [[PubMed](#)]
34. Boos, M.; Ramirez, K.; Kee, B. Extrinsic and intrinsic regulation of early natural killer cell development. *Immunol. Res.* **2008**, *40*, 193–207. [[CrossRef](#)] [[PubMed](#)]
35. Vosshenrich, C.; Ranson, T.; Samson, S.; Corcuff, E.; Colucci, F.; Rosmaraki, E.; Di Santo, J. Roles for common cytokine receptor gamma-chain-dependent cytokines in the generation, differentiation, and maturation of NK cell precursors and peripheral NK cells in vivo. *J. Immunol.* **2005**, *174*, 1213–1221. [[CrossRef](#)] [[PubMed](#)]
36. Lodolce, J.; Boone, D.; Chai, S.; Swain, R.; Dassopoulos, T.; Trettin, S.; Ma, A. IL-15 receptor maintains lymphoid homeostasis by supporting lymphocyte homing and proliferation. *Immunity* **1998**, *9*, 669–676. [[CrossRef](#)]
37. Rosmaraki, E.E.; Douagi, I.; Roth, C.; Colucci, F.; Cumano, A.; Di Santo, J.P. Identification of committed NK cell progenitors in adult murine bone marrow. *Eur. J. Immunol.* **2001**, *31*, 1900–1909. [[CrossRef](#)]
38. Nitta, T.; Yagita, H.; Sato, K.; Okumura, K. Involvement of CD56 (NKH-1/Leu-19 antigen) as an adhesion molecule in natural killer-target cell interaction. *J. Exp. Med.* **1989**, *170*, 1757–1761. [[CrossRef](#)] [[PubMed](#)]
39. Kim, S.; Iizuka, K.; Kang, H.; Dokun, A.; French, A.; Greco, S.; Yokoyama, W. In vivo developmental stages in murine natural killer cell maturation. *Nat. Immunol.* **2002**, *3*, 523–528. [[CrossRef](#)]
40. Bryceson, Y.T.; Chiang, S.C.C.; Darmanin, S.; Fauriat, C.; Schlums, H.; Theorell, J.; Wood, S.M. Molecular mechanisms of natural killer cell activation. *J. Innate Immun.* **2011**, *3*, 216–226. [[CrossRef](#)]
41. Erken, E.; Ozturk, O.G.; Kudas, O.; Tas, D.A.; Demirtas, A.; Kibar, F.; Dinkci, S.; Erken, E. Killer cell immunoglobulin-like receptor (KIR) genotype distribution in familial mediterranean fever (FMF) patients. *Med. Sci. Monit.* **2015**, *21*, 3547–3554. [[CrossRef](#)]
42. Brusilovsky, M.; Rosental, B.; Shemesh, A.; Appel, M.Y.; Porgador, A. Human NK cell recognition of target cells in the prism of natural cytotoxicity receptors and their ligands. *J. Immunotoxicol.* **2012**, *9*, 267–274. [[CrossRef](#)]
43. Vitale, M.; Cantoni, C.; Della Chiesa, M.; Ferlazzo, G.; Carlomagno, S.; Pende, D.; Falco, M.; Pessino, A.; Muccio, L.; De Maria, A.; et al. An Historical Overview: The Discovery of How NK Cells Can Kill Enemies, Recruit Defense Troops, and More. *Front. Immunol.* **2019**, *10*, 1415. [[CrossRef](#)]
44. Ochoa, M.C.; Minute, L.; Rodriguez, I.; Garasa, S.; Perez-Ruiz, E.; Inogés, S.; Melero, I.; Berraondo, P. Antibody-dependent cell cytotoxicity: Immunotherapy strategies enhancing effector NK cells. *Immunol. Cell Biol.* **2017**, *95*, 347–355. [[CrossRef](#)] [[PubMed](#)]
45. Sanchez-Correa, B.; Valhondo, I.; Hassouneh, F.; Lopez-Sejas, N.; Pera, A.; Bergua, J.M.; Arcos, M.J.; Bañas, H.; Casas-Avilés, I.; Durán, E.; et al. DNAM-1 and the TIGIT/PVRIG/TACTILE Axis: Novel Immune Checkpoints for Natural Killer Cell-Based Cancer Immunotherapy. *Cancers* **2019**, *11*, 877. [[CrossRef](#)] [[PubMed](#)]
46. Petrie, E.J.; Clements, C.S.; Lin, J.; Sullivan, L.C.; Johnson, D.; Huyton, T.; Heroux, A.; Hoare, H.L.; Beddoe, T.; Reid, H.H.; et al. CD94-NKG2A recognition of human leukocyte antigen (HLA)-E bound to an HLA class I leader sequence. *J. Exp. Med.* **2008**, *205*, 725–735. [[CrossRef](#)]

47. Borrego, F.; Masilamani, M.; Marusina, A.I.; Tang, X.; Coligan, J.E. The CD94/NKG2 family of receptors: From molecules and cells to clinical relevance. *Immunol. Res.* **2006**, *35*, 263–277. [[CrossRef](#)]
48. Li, P.; Morris, D.L.; Willcox, B.E.; Steinle, A.; Spies, T.; Strong, R.K. Complex structure of the activating immunoreceptor NKG2D and its MHC class I-like ligand MICA. *Nat. Immunol.* **2001**, *2*, 443–451. [[CrossRef](#)] [[PubMed](#)]
49. Pende, D.; Falco, M.; Vitale, M.; Cantoni, C.; Vitale, C.; Munari, E.; Bertaina, A.; Moretta, F.; Del Zotto, G.; Pietra, G.; et al. Killer Ig-Like Receptors (KIRs): Their Role in NK Cell Modulation and Developments Leading to Their Clinical Exploitation. *Front. Immunol.* **2019**, *10*, 1179. [[CrossRef](#)]
50. Veillette, A. NK cell regulation by SLAM family receptors and SAP-related adapters. *Immunol. Rev.* **2006**, *214*, 22–34. [[CrossRef](#)] [[PubMed](#)]
51. Khan, M.; Arooj, S.; Wang, H. NK Cell-Based Immune Checkpoint Inhibition. *Front. Immunol.* **2020**, *11*, 167. [[CrossRef](#)] [[PubMed](#)]
52. Harjunpää, H.; Guillerey, C. TIGIT as an emerging immune checkpoint. *Clin. Exp. Immunol.* **2020**, *200*, 108–119. [[CrossRef](#)] [[PubMed](#)]
53. Rechtes, A.; Ophir, Y.; Stein, N.; Kol, I.; Isaacson, B.; Charpak Amikam, Y.; Elnekave, A.; Tsukerman, P.; Kucan Brlic, P.; Lenac, T.; et al. Nectin4 is a novel TIGIT ligand which combines checkpoint inhibition and tumor specificity. *J. Immunother. Cancer* **2020**, *8*, e000266. [[CrossRef](#)]
54. Chocarro, L.; Blanco, E.; Zuazo, M.; Arasanz, H.; Bocanegra, A.; Fernández-Rubio, L.; Morente, P.; Fernández-Hinojal, G.; Echaide, M.; Garnica, M.; et al. Understanding LAG-3 Signaling. *Int. J. Mol. Sci.* **2021**, *22*, 5282. [[CrossRef](#)] [[PubMed](#)]
55. Wolf, Y.; Anderson, A.C.; Kuchroo, V.K. TIM3 comes of age as an inhibitory receptor. *Nat. Rev. Immunol.* **2020**, *20*, 173–185. [[CrossRef](#)] [[PubMed](#)]
56. Georgiev, H.; Ravens, I.; Papadogianni, G.; Bernhardt, G. Coming of Age: CD96 Emerges as Modulator of Immune Responses. *Front. Immunol.* **2018**, *9*, 1072. [[CrossRef](#)] [[PubMed](#)]
57. Noh, J.Y.; Yoon, S.R.; Kim, T.D.; Choi, I.; Jung, H. Toll-Like Receptors in Natural Killer Cells and Their Application for Immunotherapy. *J. Immunol. Res.* **2020**, *2020*. [[CrossRef](#)] [[PubMed](#)]
58. O'Connor, G.M.; Hart, O.M.; Gardiner, C.M. Putting the natural killer cell in its place. *Immunology* **2005**, *117*, 1–10. [[CrossRef](#)]
59. Iguchi-Manaka, A.; Kai, H.; Yamashita, Y.; Shibata, K.; Tahara-Hanaoka, S.; Honda, S.; Yasui, T.; Kikutani, H.; Shibuya, K.; Shibuya, A. Accelerated tumor growth in mice deficient in DNAM-1 receptor. *J. Exp. Med.* **2008**, *205*, 2959–2964. [[CrossRef](#)]
60. Fuchs, A.; Cella, M.; Giurisato, E.; Shaw, A.S.; Colonna, M. Cutting edge: CD96 (tactile) promotes NK cell-target cell adhesion by interacting with the poliovirus receptor (CD155). *J. Immunol.* **2004**, *172*, 3994–3998. [[CrossRef](#)]
61. Chiang, E.Y.; de Almeida, P.E.; de Almeida Nagata, D.E.; Bowles, K.H.; Du, X.; Chitre, A.S.; Banta, K.L.; Kwon, Y.; McKenzie, B.; Mittman, S.; et al. CD96 functions as a co-stimulatory receptor to enhance CD8(+) T cell activation and effector responses. *Eur. J. Immunol.* **2020**, *50*, 891–902. [[CrossRef](#)]
62. Chan, C.J.; Martinet, L.; Gilfillan, S.; Souza-Fonseca-Guimaraes, F.; Chow, M.T.; Town, L.; Ritchie, D.S.; Colonna, M.; Andrews, D.M.; Smyth, M.J. The receptors CD96 and CD226 oppose each other in the regulation of natural killer cell functions. *Nat. Immunol.* **2014**, *15*, 431–438. [[CrossRef](#)]
63. Blake, S.J.; Stannard, K.; Liu, J.; Allen, S.; Yong, M.C.R.; Mittal, D.; Aguilera, A.R.; Miles, J.J.; Lutzky, V.P.; de Andrade, L.F.; et al. Suppression of Metastases Using a New Lymphocyte Checkpoint Target for Cancer Immunotherapy. *Cancer Discov.* **2016**, *6*, 446–459. [[CrossRef](#)]
64. Maghazachi, A.A. On the role of natural killer cells in neurodegenerative diseases. *Toxins* **2013**, *5*, 363–375. [[CrossRef](#)] [[PubMed](#)]
65. Kadri, N.; Wagner, A.K.; Ganesan, S.; Kärre, K.; Wickström, S.; Johansson, M.H.; Höglund, P. Dynamic regulation of NK cell responsiveness. *Curr. Top. Microbiol. Immunol.* **2016**, *395*, 95–114. [[CrossRef](#)]
66. Freud, A.G.; Mundy-Bosse, B.L.; Yu, J.; Caligiuri, M.A. The broad spectrum of human natural killer cell diversity. *Immunity* **2017**, *47*, 820–833. [[CrossRef](#)] [[PubMed](#)]
67. Cooley, S.; Xiao, F.; Pitt, M.; Gleason, M.; McCullar, V.; Bergemann, T.; McQueen, K.; Guethlein, L.; Parham, P.; Miller, J. A subpopulation of human peripheral blood NK cells that lacks inhibitory receptors for self-MHC is developmentally immature. *Blood* **2007**, *110*, 578–586. [[CrossRef](#)]
68. Fernandez, N.; Treiner, E.; Vance, R.; Jamieson, A.; Lemieux, S.; Raulet, D. A subset of natural killer cells achieves self-tolerance without expressing inhibitory receptors specific for self-MHC molecules. *Blood* **2005**, *105*, 4416–4423. [[CrossRef](#)] [[PubMed](#)]
69. Kim, S.; Poursine-Laurent, J.; Truscott, S.; Lybarger, L.; Song, Y.; Yang, L.; French, A.; Sunwoo, J.; Lemieux, S.; Hansen, T.; et al. Licensing of natural killer cells by host major histocompatibility complex class I molecules. *Nature* **2005**, *436*, 709–713. [[CrossRef](#)] [[PubMed](#)]
70. Anfossi, N.; André, P.; Guia, S.; Falk, C.; Roetyncck, S.; Stewart, C.; Bresó, V.; Frassati, C.; Reviron, D.; Middleton, D.; et al. Human NK cell education by inhibitory receptors for MHC class I. *Immunity* **2006**, *25*, 331–342. [[CrossRef](#)] [[PubMed](#)]
71. Sordo-Bahamonde, C.; Lorenzo-Herrero, S.; Payer, Á.R.; Gonzalez, S.; López-Soto, A. Mechanisms of apoptosis resistance to NK cell-mediated cytotoxicity in cancer. *Int. J. Mol. Sci.* **2020**, *21*, 3726. [[CrossRef](#)]
72. Lee, J.; Dieckmann, N.M.G.; Edgar, J.R.; Griffiths, G.M.; Siegel, R.M. Fas Ligand localizes to intraluminal vesicles within NK cell cytolytic granules and is enriched at the immune synapse. *Immun. Inflamm. Dis.* **2018**, *6*, 312–321. [[CrossRef](#)]
73. Bossi, G.; Griffiths, G.M. Degranulation plays an essential part in regulating cell surface expression of Fas ligand in T cells and natural killer cells. *Nat. Med.* **1999**, *5*, 90–96. [[CrossRef](#)]

74. Clavijo-Salomon, M.A.; Salcedo, R.; Roy, S.; Das Neves, R.X.; Dzutsev, A.; Sales-Campos, H.; Borbely, K.S.C.; Silla, L.; Orange, J.S.; Mace, E.M.; et al. Human NK cells prime inflammatory DC precursors to induce Tc17 differentiation. *Blood Adv.* **2020**, *4*, 3990–4006. [[CrossRef](#)] [[PubMed](#)]
75. Sojka, D.K.; Yang, L.; Yokoyama, W.M. Uterine natural killer cells. *Front. Immunol.* **2019**, *10*, 960. [[CrossRef](#)] [[PubMed](#)]
76. Vandenhoute, J.; Wouters, C.H.; Matthys, P. Natural Killer Cells in Systemic Autoinflammatory Diseases: A Focus on Systemic Juvenile Idiopathic Arthritis and Macrophage Activation Syndrome. *Front. Immunol.* **2020**, *10*, 3089. [[CrossRef](#)] [[PubMed](#)]
77. Orange, J.S. Natural killer cell deficiency. *J. Allergy Clin. Immunol.* **2013**, *132*, 515–525. [[CrossRef](#)]
78. Jiang, S.; Gao, H.; Luo, Q.; Wang, P.; Yang, X. The correlation of lymphocyte subsets, natural killer cell, and Parkinson's disease: A meta-analysis. *Neurol. Sci.* **2017**, *38*, 1373–1380. [[CrossRef](#)] [[PubMed](#)]
79. Poggi, A.; Zocchi, M.R. NK cell autoreactivity and autoimmune diseases. *Front. Immunol.* **2014**, *5*, 27. [[CrossRef](#)]
80. Portales-Cervantes, L.; Dawod, B.; Marshall, J.S. Mast cells and natural killer cells—A potentially critical interaction. *Viruses* **2019**, *11*, 514. [[CrossRef](#)] [[PubMed](#)]
81. Korbel, D.S.; Finney, O.C.; Riley, E.M. Natural killer cells and innate immunity to protozoan pathogens. *Int. J. Parasitol.* **2004**, *34*, 1517–1528. [[CrossRef](#)]
82. Jost, S.; Altfeld, M. Control of human viral infections by natural killer cells. *Annu. Rev. Immunol.* **2013**, *31*, 163–194. [[CrossRef](#)]
83. Ortaldo, J.R.; Wiltrout, R.H.; Reynolds, C.W. Natural killer activity: Early days, advances, and seminal observations. *Crit. Rev. Oncog.* **2014**, *19*, 1–13. [[CrossRef](#)] [[PubMed](#)]
84. López-Soto, A.; Gonzalez, S.; Smyth, M.J.; Galluzzi, L. Control of Metastasis by NK Cells. *Cancer Cell* **2017**, *32*, 135–154. [[CrossRef](#)] [[PubMed](#)]
85. Malmberg, K.J.; Carlsten, M.; Björklund, A.; Sohlberg, E.; Bryceson, Y.T.; Ljunggren, H.G. Natural killer cell-mediated immunosurveillance of human cancer. *Semin. Immunol.* **2017**, *31*, 20–29. [[CrossRef](#)]
86. Shankaran, V.; Ikeda, H.; Bruce, A.T.; White, J.M.; Swanson, P.E.; Old, L.J.; Schreiber, R.D. IFN γ , and lymphocytes prevent primary tumour development and shape tumour immunogenicity. *Nature* **2001**, *410*, 1107–1111. [[CrossRef](#)] [[PubMed](#)]
87. Street, S.; Cretney, E.; Smyth, M. Perforin and interferon-gamma activities independently control tumor initiation, growth, and metastasis. *Blood* **2001**, *97*, 192–197. [[CrossRef](#)] [[PubMed](#)]
88. Van den Broek, M.; Kägi, D.; Ossendorp, F.; Toes, R.; Vamvakas, S.; Lutz, W.; Melief, C.; Zinkernagel, R.; Hengartner, H. Decreased tumor surveillance in perforin-deficient mice. *J. Exp. Med.* **1996**, *184*, 1781–1790. [[CrossRef](#)] [[PubMed](#)]
89. Kaplan, D.; Shankaran, V.; Dighe, A.; Stockert, E.; Aguet, M.; Old, L.; Schreiber, R. Demonstration of an interferon gamma-dependent tumor surveillance system in immunocompetent mice. *Proc. Natl. Acad. Sci. USA* **1998**, *95*, 7556–7561. [[CrossRef](#)] [[PubMed](#)]
90. Cretney, E.; Takeda, K.; Yagita, H.; Glaccum, M.; Peschon, J.J.; Smyth, M.J. Increased Susceptibility to Tumor Initiation and Metastasis in TNF-Related Apoptosis-Inducing Ligand-Deficient Mice. *J. Immunol.* **2002**, *168*, 1356–1361. [[CrossRef](#)] [[PubMed](#)]
91. Takeda, K.; Smyth, M.; Cretney, E.; Hayakawa, Y.; Kayagaki, N.; Yagita, H.; Okumura, K. Critical role for tumor necrosis factor-related apoptosis-inducing ligand in immune surveillance against tumor development. *J. Exp. Med.* **2002**, *195*, 161–169. [[CrossRef](#)]
92. Smyth, M.; Crowe, N.; Godfrey, D. NK cells and NKT cells collaborate in host protection from methylcholanthrene-induced fibrosarcoma. *Int. Immunol.* **2001**, *13*, 459–463. [[CrossRef](#)] [[PubMed](#)]
93. Carlsten, M.; Malmberg, K.J.; Ljunggren, H.G. Natural killer cell-mediated lysis of freshly isolated human tumor cells. *Int. J. Cancer* **2009**, *124*, 757–762. [[CrossRef](#)] [[PubMed](#)]
94. Imai, K.; Matsuyama, S.; Miyake, S.; Suga, K.; Nakachi, K. Natural cytotoxic activity of peripheral-blood lymphocytes and cancer incidence: An 11-year follow-up study of a general population. *Lancet* **2000**, *356*, 1795–1799. [[CrossRef](#)]
95. Jouanguy, E.; Gineau, L.; Cottineau, J.; Béziat, V.; Vivier, E.; Casanova, J.L. Inborn errors of the development of human natural killer cells. *Curr. Opin. Allergy Clin. Immunol.* **2013**, *13*, 589–595. [[CrossRef](#)] [[PubMed](#)]
96. Ebbo, M.; Gérard, L.; Carpentier, S.; Vély, F.; Cypowyj, S.; Farnarier, C.; Vince, N.; Malphettes, M.; Fieschi, C.; Oksenhendler, E.; et al. Low Circulating Natural Killer Cell Counts are Associated with Severe Disease in Patients with Common Variable Immunodeficiency. *EBioMedicine* **2016**, *6*, 222–230. [[CrossRef](#)]
97. Hahn, C.N.; Chong, C.E.; Carmichael, C.L.; Wilkins, E.J.; Brautigan, P.J.; Li, X.C.; Babic, M.; Lin, M.; Carmagnac, A.; Lee, Y.K.; et al. Heritable GATA2 mutations associated with familial myelodysplastic syndrome and acute myeloid leukemia. *Nat. Genet.* **2011**, *43*, 1012–1017. [[CrossRef](#)]
98. Shima, N.; Alcaraz, A.; Liachko, I.; Buske, T.R.; Andrews, C.A.; Munroe, R.J.; Hartford, S.A.; Tye, B.K.; Schimenti, J.C. A viable allele of Mcm4 causes chromosome instability and mammary adenocarcinomas in mice. *Nat. Genet.* **2007**, *39*, 93–98. [[CrossRef](#)] [[PubMed](#)]
99. Jhunjhunwala, S.; Hammer, C.; Delamarre, L. Antigen presentation in cancer: Insights into tumour immunogenicity and immune evasion. *Nat. Rev. Cancer* **2021**, *21*, 298–312. [[CrossRef](#)]
100. Jobim, M.; Jobim, L. Natural killer cells and immune surveillance. *J. Pediatr.* **2008**, *84*, S58–S67. [[CrossRef](#)]
101. Huntington, N.; Cursons, J.; Rautela, J. The cancer-natural killer cell immunity cycle. *Nat. Rev. Cancer* **2020**, *20*, 437–454. [[CrossRef](#)] [[PubMed](#)]
102. Smyth, M.; Godfrey, D.; Trapani, J. A fresh look at tumor immunosurveillance and immunotherapy. *Nat. Immunol.* **2001**, *2*, 293–299. [[CrossRef](#)]

103. Sanchez-Martinez, D.; Allende-Vega, N.; Orecchioni, S.; Talarico, G.; Cornillon, A.; Vo, D.N.; Rene, C.; Lu, Z.Y.; Krzywinska, E.; Anel, A.; et al. Expansion of allogeneic NK cells with efficient antibody-dependent cell cytotoxicity against multiple tumors. *Theranostics* **2018**, *8*, 3856–3869. [[CrossRef](#)]
104. Lequeux, A.; Noman, M.Z.; Xiao, M.; Van Moer, K.; Hasmim, M.; Benoit, A.; Bosseler, M.; Viry, E.; Arakelian, T.; Berchem, G.; et al. Targeting HIF-1 alpha transcriptional activity drives cytotoxic immune effector cells into melanoma and improves combination immunotherapy. *Oncogene* **2021**, *40*, 4725–4735. [[CrossRef](#)]
105. Balsamo, M.; Manzini, C.; Pietra, G.; Raggi, F.; Blengio, F.; Mingari, M.C.; Varesio, L.; Moretta, L.; Bosco, M.C.; Vitale, M. Hypoxia downregulates the expression of activating receptors involved in NK-cell-mediated target cell killing without affecting ADCC. *Eur. J. Immunol.* **2013**, *43*, 2756–2764. [[CrossRef](#)] [[PubMed](#)]
106. Prager, I.; Liesche, C.; van Ooijen, H.; Urlaub, D.; Verron, Q.; Sandström, N.; Fasbender, F.; Claus, M.; Eils, R.; Beaudouin, J.; et al. NK cells switch from granzyme B to death receptor-mediated cytotoxicity during serial killing. *J. Exp. Med.* **2019**, *216*, 2113–2127. [[CrossRef](#)]
107. Rossin, A.; Miloro, G.; Hueber, A.O. TRAIL and FasL functions in cancer and autoimmune diseases: Towards an increasing complexity. *Cancers* **2019**, *11*, 639. [[CrossRef](#)]
108. Bhat, R.; Watzl, C. Serial Killing of Tumor Cells by Human Natural Killer Cells—Enhancement by Therapeutic Antibodies. *PLoS ONE* **2007**, *2*, e326. [[CrossRef](#)]
109. Dunn, G.; Bruce, A.; Ikeda, H.; Old, L.; Schreiber, R. Cancer immunoediting: From immunosurveillance to tumor escape. *Nat. Immunol.* **2002**, *3*, 991–998. [[CrossRef](#)]
110. Zlotnik, A.; Yoshie, O. The chemokine superfamily revisited. *Immunity* **2012**, *36*, 705–716. [[CrossRef](#)]
111. Shida, Y.; Nakazawa, T.; Matsuda, R.; Morimoto, T.; Nishimura, F.; Nakamura, M.; Maeoka, R.; Yamada, S.; Nakagawa, I.; Park, Y.-S.; et al. Ex Vivo Expanded and Activated Natural Killer Cells Prolong the Overall Survival of Mice with Glioblastoma-like Cell-Derived Tumors. *Int. J. Mol. Sci.* **2021**, *22*, 9975. [[CrossRef](#)]
112. Maghazachi, A.A. Role of Chemokines in the Biology of Natural Killer Cells. In *Current Topics in Microbiology and Immunology*; Springer: Berlin/Heidelberg, Germany, 2010; Volume 341, pp. 37–58.
113. Schall, T.J.; Bacon, K.; Toy, K.J.; Goeddel, D. V Selective attraction of monocytes and T lymphocytes of the memory phenotype by cytokine RANTES. *Nature* **1990**, *347*, 669–671. [[CrossRef](#)] [[PubMed](#)]
114. Maghazachi, A.A.; Al-Aoukaty, A.; Schall, T.J. CC chemokines induce the generation of killer cells from CD56+ cells. *Eur. J. Immunol.* **1996**, *26*, 315–319. [[CrossRef](#)]
115. Martín-Fontecha, A.; Thomsen, L.; Brett, S.; Gerard, C.; Lipp, M.; Lanzavecchia, A.; Sallusto, F. Induced recruitment of NK cells to lymph nodes provides IFN- γ for T(H)1 priming. *Nat. Immunol.* **2004**, *5*, 1260–1265. [[CrossRef](#)] [[PubMed](#)]
116. Böttcher, J.P.; Bonavita, E.; Chakravarty, P.; Bles, H.; Cabeza-Cabrerizo, M.; Sammicheli, S.; Rogers, N.C.; Sahai, E.; Zelenay, S.; Reis e Sousa, C. NK Cells Stimulate Recruitment of cDC1 into the Tumor Microenvironment Promoting Cancer Immune Control. *Cell* **2018**, *172*, 1022–1037. [[CrossRef](#)]
117. Barry, K.C.; Hsu, J.; Broz, M.L.; Cueto, F.J.; Binnewies, M.; Combes, A.J.; Nelson, A.E.; Loo, K.; Kumar, R.; Rosenblum, M.D.; et al. A natural killer-dendritic cell axis defines checkpoint therapy-responsive tumor microenvironments. *Nat. Med.* **2018**, *24*, 1178–1191. [[CrossRef](#)]
118. Sánchez-Paulete, A.R.; Cueto, F.J.; Martínez-López, M.; Labiano, S.; Morales-Kastresana, A.; Rodríguez-Ruiz, M.E.; Jure-Kunkel, M.; Azpilikueta, A.; Aznar, M.A.; Quetglas, J.I.; et al. Cancer immunotherapy with immunomodulatory anti-CD137 and anti-PD-1 monoclonal antibodies requires Batf3-dependent dendritic cells. *Cancer Discov.* **2016**, *6*, 71–79. [[CrossRef](#)] [[PubMed](#)]
119. Hildner, K.; Edelson, B.; Purtha, W.; Diamond, M.; Matsushita, H.; Kohyama, M.; Calderon, B.; Schraml, B.; Unanue, E.; Diamond, M.; et al. Batf3 deficiency reveals a critical role for CD8 α + dendritic cells in cytotoxic T cell immunity. *Science* **2008**, *322*, 1097–1100. [[CrossRef](#)] [[PubMed](#)]
120. Deauvieu, F.; Ollion, V.; Doffin, A.C.; Achard, C.; Fonteneau, J.F.; Verronese, E.; Durand, I.; Ghittoni, R.; Marvel, J.; Dezutter-Dambuyant, C.; et al. Human natural killer cells promote cross-presentation of tumor cell-derived antigens by dendritic cells. *Int. J. Cancer* **2015**, *136*, 1085–1094. [[CrossRef](#)]
121. Mocikat, R.; Braumüller, H.; Gumy, A.; Egeter, O.; Ziegler, H.; Reusch, U.; Bubeck, A.; Louis, J.; Mailhammer, R.; Riethmüller, G.; et al. Natural killer cells activated by MHC class I(low) targets prime dendritic cells to induce protective CD8 T cell responses. *Immunity* **2003**, *19*, 561–569. [[CrossRef](#)]
122. Kelly, J.; Darcy, P.; Markby, J.; Godfrey, D.; Takeda, K.; Yagita, H.; Smyth, M. Induction of tumor-specific T cell memory by NK cell-mediated tumor rejection. *Nat. Immunol.* **2002**, *3*, 83–90. [[CrossRef](#)]
123. Nersesian, S.; Schwartz, S.L.; Grantham, S.R.; MacLean, L.K.; Lee, S.N.; Pugh-Toole, M.; Boudreau, J.E. NK cell infiltration is associated with improved overall survival in solid cancers: A systematic review and meta-analysis. *Transl. Oncol.* **2021**, *14*, 100930. [[CrossRef](#)] [[PubMed](#)]
124. Galea, I.; Bechmann, I.; Perry, V.H. What is immune privilege (not)? *Trends Immunol.* **2007**, *28*, 12–18. [[CrossRef](#)] [[PubMed](#)]
125. Watkins, S.; Robel, S.; Kimbrough, I.F.; Robert, S.M.; Ellis-Davies, G.; Sontheimer, H. Disruption of astrocyte-vascular coupling and the blood-brain barrier by invading glioma cells. *Nat. Commun.* **2014**, *5*, 4196. [[CrossRef](#)] [[PubMed](#)]
126. Orrego, E.; Castaneda, C.A.; Castillo, M.; Bernabe, L.A.; Casavilca, S.; Chakravarti, A.; Meng, W.; Garcia-Corrochano, P.; Villa-Robles, M.R.; Zevallos, R.; et al. Distribution of tumor-infiltrating immune cells in glioblastoma. *CNS Oncol.* **2018**, *7*, CNS21. [[CrossRef](#)] [[PubMed](#)]

127. Yang, I.; Han, S.J.; Sughrue, M.E.; Tihan, T.; Parsa, A.T. Immune cell infiltrate differences in pilocytic astrocytoma and glioblastoma: Evidence of distinct immunological microenvironments that reflect tumor biology. *J. Neurosurg.* **2011**, *115*, 505–511. [[CrossRef](#)]
128. Kmiecik, J.; Poli, A.; Brons, N.H.C.; Waha, A.; Eide, G.E.; Enger, P.Ø.; Zimmer, J.; Chekenya, M. Elevated CD3+ and CD8+ tumor-infiltrating immune cells correlate with prolonged survival in glioblastoma patients despite integrated immunosuppressive mechanisms in the tumor microenvironment and at the systemic level. *J. Neuroimmunol.* **2013**, *264*, 71–83. [[CrossRef](#)]
129. González-Tablas Pimenta, M.; Otero, Á.; Arandia Guzman, D.A.; Pascual-Argente, D.; Ruíz Martín, L.; Sousa-Casasnovas, P.; García-Martin, A.; de Oca Roa Montes, J.C.; Villaseñor-Ledezma, J.; Torres Carretero, L.; et al. Tumor cell and immune cell profiles in primary human glioblastoma: Impact on patient outcome. *Brain Pathol.* **2021**, *31*, 365–380. [[CrossRef](#)]
130. Tan, W.C.C.; Nerurkar, S.N.; Cai, H.Y.; Ng, H.H.M.; Wu, D.; Wee, Y.T.F.; Lim, J.C.T.; Yeong, J.; Lim, T.K.H. Overview of multiplex immunohistochemistry/immunofluorescence techniques in the era of cancer immunotherapy. *Cancer Commun.* **2020**, *40*, 135–153. [[CrossRef](#)]
131. Chen, B.; Khodadoust, M.S.; Liu, C.L.; Newman, A.M.; Alizadeh, A.A. Profiling tumor infiltrating immune cells with CIBERSORT. In *Cancer Systems Biology. Methods and Protocols*; Von Stechow, L., Ed.; Humana Press Inc.: New York, NY, USA, 2018; Volume 1711, pp. 243–259. ISBN 978-1-4939-7492-4.
132. Wang, J.; Matosevic, S. NT5E/CD73 as Correlative Factor of Patient Survival and Natural Killer Cell Infiltration in Glioblastoma. *J. Clin. Med.* **2019**, *8*, 1526. [[CrossRef](#)]
133. Close, H.J.; Stead, L.F.; Nsengimana, J.; Reilly, K.A.; Droop, A.; Wurdak, H.; Mathew, R.K.; Corns, R.; Newton-Bishop, J.; Melcher, A.A.; et al. Expression profiling of single cells and patient cohorts identifies multiple immunosuppressive pathways and an altered NK cell phenotype in glioblastoma. *Clin. Exp. Immunol.* **2020**, *200*, 33–44. [[CrossRef](#)] [[PubMed](#)]
134. Fu, W.; Wenjing, W.; Hao, L.; Yuming, J.; Huo, R.; Zihan, Y.; Wang, J.; Wang, S.; Wang, J.; Chen, D.; et al. Single-Cell Atlas Reveals Complexity of the Immunosuppressive Microenvironment of Initial and Recurrent Glioblastoma. *Front. Immunol.* **2020**, *11*, 835. [[CrossRef](#)] [[PubMed](#)]
135. Romee, R.; Foley, B.; Lenvik, T.; Wang, Y.; Zhang, B.; Ankarlo, D.; Luo, X.; Cooley, S.; Verneris, M.; Walcheck, B.; et al. NK cell CD16 surface expression and function is regulated by a disintegrin and metalloprotease-17 (ADAM17). *Blood* **2013**, *121*, 3599–3608. [[CrossRef](#)]
136. Grzywacz, B.; Kataria, N.; Verneris, M.R. CD56dimCD16+ NK cells downregulate CD16 following target cell induced activation of matrix metalloproteinases. *Leukemia* **2007**, *21*, 356–359. [[CrossRef](#)] [[PubMed](#)]
137. Vujanovic, L.; Chuckran, C.; Lin, Y.; Ding, F.; Sander, C.A.; Santos, P.M.; Lohr, J.; Mashadi-Hosseini, A.; Warren, S.; White, A.; et al. CD56dim CD16– Natural Killer Cell Profiling in Melanoma Patients Receiving a Cancer Vaccine and Interferon- α . *Front. Immunol.* **2019**, *10*, 14. [[CrossRef](#)] [[PubMed](#)]
138. Wendel, M.; Galani, I.E.; Suri-Payer, E.; Cerwenka, A. Natural killer cell accumulation in tumors is dependent on IFN- γ and CXCR3 ligands. *Cancer Res.* **2008**, *68*, 8437–8445. [[CrossRef](#)] [[PubMed](#)]
139. Lee, S.J.; Kang, W.Y.; Yoon, Y.; Jin, J.Y.; Song, H.J.; Her, J.H.; Kang, S.M.; Hwang, Y.K.; Kang, K.J.; Joo, K.M.; et al. Natural killer (NK) cells inhibit systemic metastasis of glioblastoma cells and have therapeutic effects against glioblastomas in the brain. *BMC Cancer* **2015**, *15*, 1011. [[CrossRef](#)] [[PubMed](#)]
140. Beauchesne, P. Extra-neural metastases of malignant gliomas: Myth or reality? *Cancers* **2011**, *3*, 461–477. [[CrossRef](#)]
141. Stevens, A.; Klöter, I.; Roggendorf, W. Inflammatory infiltrates and natural killer cell presence in human brain tumors. *Cancer* **1988**, *61*, 738–743. [[CrossRef](#)]
142. Vaquero, J.; Coca, S.; Oya, S.; Martínez, R.; Ramiro, J.; Salazar, F. Presence and significance of NK cells in glioblastomas. *J. Neurosurg.* **1989**, *70*, 728–731. [[CrossRef](#)]
143. Liang, P.; Chai, Y.; Zhao, H.; Wang, G. Predictive Analyses of Prognostic-Related Immune Genes and Immune Infiltrates for Glioblastoma. *Diagnostics* **2020**, *10*, 177. [[CrossRef](#)]
144. Mostafa, H.; Pala, A.; Högel, J.; Hlavac, M.; Dietrich, E.; Westhoff, M.; Nonnenmacher, L.; Burster, T.; Georgieff, M.; Wirtz, C.; et al. Immune phenotypes predict survival in patients with glioblastoma multiforme. *J. Hematol. Oncol.* **2016**, *9*, 77. [[CrossRef](#)]
145. Kmiecik, J.; Zimmer, J.; Chekenya, M. Natural killer cells in intracranial neoplasms: Presence and therapeutic efficacy against brain tumours. *J. Neurooncol.* **2014**, *116*, 1–9. [[CrossRef](#)] [[PubMed](#)]
146. Razavi, S.-M.; Lee, K.E.; Jin, B.E.; Aujla, P.S.; Gholamin, S.; Li, G. Immune Evasion Strategies of Glioblastoma. *Front. Surg.* **2016**, *3*, 11. [[CrossRef](#)]
147. Roth, P.; Mittelbronn, M.; Wick, W.; Meyermann, R.; Tatagiba, M.; Weller, M. Malignant glioma cells counteract antitumor immune responses through expression of lectin-like transcript-1. *Cancer Res.* **2007**, *67*, 3540–3544. [[CrossRef](#)]
148. Wischhusen, J.; Friese, M.; Mittelbronn, M.; Meyermann, R.; Weller, M. HLA-E protects glioma cells from NKG2D-mediated immune responses in vitro: Implications for immune escape in vivo. *J. Neuropathol. Exp. Neurol.* **2005**, *64*, 523–528. [[CrossRef](#)] [[PubMed](#)]
149. Zhang, X.; Wu, A.; Fan, Y.; Wang, Y. Increased transforming growth factor- β 2 in epidermal growth factor receptor variant III-positive glioblastoma. *J. Clin. Neurosci.* **2011**, *18*, 821–826. [[CrossRef](#)]
150. Zwirner, N.W.; Domaica, C.I. Cytokine regulation of natural killer cell effector functions. *BioFactors* **2010**, *36*, 274–288. [[CrossRef](#)] [[PubMed](#)]

151. Castriconi, R.; Cantoni, C.; Della Chiesa, M.; Vitale, M.; Marcenaro, E.; Conte, R.; Biassoni, R.; Bottino, C.; Moretta, L.; Moretta, A. Transforming growth factor beta 1 inhibits expression of NKP30 and NKG2D receptors: Consequences for the NK-mediated killing of dendritic cells. *Proc. Natl. Acad. Sci. USA* **2003**, *100*, 4120–4125. [[CrossRef](#)]
152. Wilson, E.B.; El-Jawhari, J.J.; Neilson, A.L.; Hall, G.D.; Melcher, A.A.; Meade, J.L.; Cook, G.P. Human tumour immune evasion via TGF- β blocks NK cell activation but not survival allowing therapeutic restoration of anti-tumour activity. *PLoS ONE* **2011**, *6*, 22842. [[CrossRef](#)]
153. Burnet, M. Cancer: A Biological Approach. III. Viruses associated with neoplastic conditions. IV. Practical applications. *Br. Med. J.* **1957**, *1*, 841–847. [[CrossRef](#)] [[PubMed](#)]
154. Helmy, K.Y.; Patel, S.A.; Nahas, G.R.; Rameshwar, P. Cancer immunotherapy: Accomplishments to date and future promise. *Ther. Deliv.* **2013**, *4*, 1307–1320. [[CrossRef](#)]
155. Choucair, K.; Duff, J.R.; Cassidy, C.S.; Albrethsen, M.T.; Kelso, J.D.; Lenhard, A.; Staats, H.; Patel, R.; Brunicardi, F.C.; Dworkin, L.; et al. Natural killer cells: A review of biology, therapeutic potential and challenges in treatment of solid tumors. *Future Oncol.* **2019**, *15*, 3053–3069. [[CrossRef](#)]
156. Shimasaki, N.; Jain, A.; Campana, D. NK cells for cancer immunotherapy. *Nat. Rev. Drug Discov.* **2020**, *19*, 200–218. [[CrossRef](#)] [[PubMed](#)]
157. Ruggeri, L.; Capanni, M.; Urbani, E.; Perruccio, K.; Shlomchik, W.D.; Tosti, A.; Posati, S.; Rogaia, D.; Frassoni, F.; Aversa, F.; et al. Effectiveness of donor natural killer cell alloreactivity in mismatched hematopoietic transplants. *Science* **2002**, *295*, 2097–2100. [[CrossRef](#)] [[PubMed](#)]
158. Miller, J.S.; Soignier, Y.; Panoskaltis-Mortari, A.; McNearney, S.A.; Yun, G.H.; Fautsch, S.K.; McKenna, D.; Le, C.; Defor, T.E.; Burns, L.J.; et al. Successful adoptive transfer and in vivo expansion of human haploidentical NK cells in patients with cancer. *Blood* **2005**, *105*, 3051–3057. [[CrossRef](#)] [[PubMed](#)]
159. Liu, E.; Marin, D.; Banerjee, P.; Macapinlac, H.A.; Thompson, P.; Basar, R.; Nassif Kerbauy, L.; Overman, B.; Thall, P.; Kaplan, M.; et al. Use of CAR-Transduced Natural Killer Cells in CD19-Positive Lymphoid Tumors. *N. Engl. J. Med.* **2020**, *382*, 545–553. [[CrossRef](#)]
160. Fang, F.; Xiao, W.; Tian, Z. NK cell-based immunotherapy for cancer. *Semin. Immunol.* **2017**, *31*, 37–54. [[CrossRef](#)] [[PubMed](#)]
161. Navarro, A.G.; Espedal, H.; Joseph, J.V.; Trachsel-Moncho, L.; Bahador, M.; Gjertsen, B.T.; Kristoffersen, E.K.; Simonsen, A.; Miletic, H.; Enger, P.Ø.; et al. Pretreatment of glioblastoma with bortezomib potentiates natural killer cell cytotoxicity through TRAIL/DR5 mediated apoptosis and prolongs animal survival. *Cancers* **2019**, *11*, 996. [[CrossRef](#)]
162. Jung, T.-Y.; Choi, Y.-D.; Kim, Y.-H.; Lee, J.-J.; Kim, H.-S.; Kim, J.-S.; Kim, S.-K.; Jung, S.; Cho, D. Immunological characterization of glioblastoma cells for immunotherapy. *Anticancer Res.* **2013**, *33*, 2525–2533.
163. Oh, S.J.; Yang, J.I.; Kim, O.; Ahn, E.J.; Kang, W.D.; Lee, J.H.; Moon, K.S.; Lee, K.H.; Cho, D. Human U87 glioblastoma cells with stemness features display enhanced sensitivity to natural killer cell cytotoxicity through altered expression of NKG2D ligand. *Cancer Cell Int.* **2017**, *17*, 22. [[CrossRef](#)]
164. Sharifzad, F.; Mardpour, S.; Mardpour, S.; Fakharian, E.; Taghikhani, A.; Sharifzad, A.; Kiani, S.; Heydarian, Y.; Łos, M.; Azizi, Z.; et al. HSP70/IL-2 Treated NK Cells Effectively Cross the Blood Brain Barrier and Target Tumor Cells in a Rat Model of Induced Glioblastoma Multiforme (GBM). *Int. J. Mol. Sci.* **2020**, *21*, 2263. [[CrossRef](#)] [[PubMed](#)]
165. Tanaka, Y.; Nakazawa, T.; Nakamura, M.; Nishimura, F.; Matsuda, R.; Omoto, K.; Shida, Y.; Murakami, T.; Nakagawa, I.; Motoyama, Y.; et al. Ex vivo-expanded highly purified natural killer cells in combination with temozolomide induce antitumor effects in human glioblastoma cells in vitro. *PLoS ONE* **2019**, *14*, e0212455. [[CrossRef](#)] [[PubMed](#)]
166. Giannattasio, A.; Weil, S.; Kloess, S.; Ansari, N.; Stelzer, E.H.K.; Cerwenka, A.; Steinle, A.; Koehl, U.; Koch, J. Cytotoxicity and infiltration of human NK cells in in vivo-like tumor spheroids. *BMC Cancer* **2015**, *15*, 351. [[CrossRef](#)] [[PubMed](#)]
167. Morimoto, T.; Nakazawa, T.; Matsuda, R.; Nishimura, F.; Nakamura, M.; Yamada, S.; Nakagawa, I.; Park, Y.-S.; Tsujimura, T.; Nakase, H. Evaluation of Comprehensive Gene Expression and NK Cell-Mediated Killing in Glioblastoma Cell Line-Derived Spheroids. *Cancers* **2021**, *13*, 4896. [[CrossRef](#)]
168. Nunes, A.S.; Barros, A.S.; Costa, E.C.; Moreira, A.F.; Correia, I.J. 3D tumor spheroids as in vitro models to mimic in vivo human solid tumors resistance to therapeutic drugs. *Biotechnol. Bioeng.* **2019**, *116*, 206–226. [[CrossRef](#)]
169. Haspels, H.N.; Rahman, M.A.; Joseph, J.V.; Navarro, A.G.; Chekenya, M. Glioblastoma Stem-Like Cells Are More Susceptible Than Differentiated Cells to Natural Killer Cell Lysis Mediated Through Killer Immunoglobulin-Like Receptors–Human Leukocyte Antigen Ligand Mismatch and Activation Receptor–Ligand Interactions. *Front. Immunol.* **2018**, *9*, 1345. [[CrossRef](#)]
170. Avril, T.; Vauleon, E.; Hamlat, A.; Saikali, S.; Etcheverry, A.; Delmas, C.; Diabira, S.; Mosser, J.; Quillien, V. Human glioblastoma stem-like cells are more sensitive to allogeneic NK and T cell-mediated killing compared with serum-cultured glioblastoma cells. *Brain Pathol.* **2012**, *22*, 159–174. [[CrossRef](#)] [[PubMed](#)]
171. Castriconi, R.; Daga, A.; Dondero, A.; Zona, G.; Poliani, P.L.; Melotti, A.; Griffero, F.; Marubbi, D.; Spaziante, R.; Bellora, F.; et al. NK Cells Recognize and Kill Human Glioblastoma Cells with Stem Cell-Like Properties. *J. Immunol.* **2009**, *182*, 3530–3539. [[CrossRef](#)]
172. Tseng, H.-C.; Inagaki, A.; Bui, V.T.; Cacalano, N.; Kasahara, N.; Man, Y.; Jewett, A. Differential Targeting of Stem Cells and Differentiated Glioblastomas by NK Cells. *J. Cancer* **2015**, *6*, 866–876. [[CrossRef](#)]

173. Shaim, H.; Shanley, M.; Basar, R.; Daher, M.; Gumin, J.; Zamler, D.B.; Uprety, N.; Wang, F.; Huang, Y.; Gabrusiewicz, K.; et al. Targeting the αv integrin/TGF- β axis improves natural killer cell function against glioblastoma stem cells. *J. Clin. Investig.* **2021**, *131*. [[CrossRef](#)]
174. Gimple, R.C.; Bhargava, S.; Dixit, D.; Rich, J.N. Glioblastoma stem cells: Lessons from the tumor hierarchy in a lethal cancer. *Genes Dev.* **2019**, *33*, 591–609. [[CrossRef](#)]
175. Backström, E.; Chambers, B.J.; Ho, E.L.; Naidenko, O.V.; Mariotti, R.; Fremont, D.H.; Yokoyama, W.M.; Kristensson, K.; Ljunggren, H.-G. Natural killer cell-mediated lysis of dorsal root ganglia neurons via RAE1/NKG2D interactions. *Eur. J. Immunol.* **2003**, *33*, 92–100. [[CrossRef](#)]
176. Davies, A.J.; Kim, H.W.; Gonzalez-Cano, R.; Choi, J.; Back, S.K.; Roh, S.E.; Johnson, E.; Gabriac, M.; Kim, M.-S.; Lee, J.; et al. Natural Killer Cells Degenerate Intact Sensory Afferents following Nerve Injury. *Cell* **2019**, *176*, 716–728.e18. [[CrossRef](#)]
177. Backström, E.; Ljunggren, H.-G.; Kristensson, K. NK cell-mediated destruction of influenza A virus-infected peripheral but not central neurones. *Scand. J. Immunol.* **2007**, *65*, 353–361. [[CrossRef](#)] [[PubMed](#)]
178. Backström, E.; Chambers, B.J.; Kristensson, K.; Ljunggren, H.G. Direct NK cell-mediated lysis of syngenic dorsal root ganglia neurons in vitro. *J. Immunol.* **2000**, *165*, 4895–4900. [[CrossRef](#)] [[PubMed](#)]
179. Jin, W.-N.; Shi, K.; He, W.; Sun, J.-H.; Van Kaer, L.; Shi, F.-D.; Liu, Q. Neuroblast senescence in the aged brain augments natural killer cell cytotoxicity leading to impaired neurogenesis and cognition. *Nat. Neurosci.* **2021**, *24*, 61–73. [[CrossRef](#)]
180. Nianias, A.; Themeli, M. Induced Pluripotent Stem Cell (iPSC)-Derived Lymphocytes for Adoptive Cell Immunotherapy: Recent Advances and Challenges. *Curr. Hematol. Malig. Rep.* **2019**, *14*, 261–268. [[CrossRef](#)] [[PubMed](#)]
181. Oberoi, P.; Kamenjarin, K.; Ossa, J.; Uherek, B.; Bönig, H.; Wels, W. Directed Differentiation of Mobilized Hematopoietic Stem and Progenitor Cells into Functional NK cells with Enhanced Antitumor Activity. *Cells* **2020**, *9*, 811. [[CrossRef](#)]
182. Suck, G.; Odendahl, M.; Nowakowska, P.; Seidl, C.; Wels, W.S.; Klingemann, H.G.; Tonn, T. NK-92: An ‘off-the-shelf therapeutic’ for adoptive natural killer cell-based cancer immunotherapy. *Cancer Immunol. Immunother.* **2015**, *65*, 485–492. [[CrossRef](#)] [[PubMed](#)]
183. Daher, M.; Rezvani, K. Next generation natural killer cells for cancer immunotherapy: The promise of genetic engineering. *Curr. Opin. Immunol.* **2018**, *51*, 146–153. [[CrossRef](#)]
184. Ishikawa, E.; Tsuboi, K.; Saijo, K.; Harada, H.; Takano, S.; Nose, T.; Ohno, T. Autologous natural killer cell therapy for human recurrent malignant glioma. *Anticancer Res.* **2004**, *24*, 1861–1871.
185. Dillman, R.; Duma, C.; Schiltz, P.; DePriest, C.; Ellis, R.; Okamoto, K.; Beutel, L.; De Leon, C.; Chico, S. Intracavitary placement of autologous lymphokine-activated killer (LAK) cells after resection of recurrent glioblastoma. *J. Immunother.* **2004**, *27*, 398–404. [[CrossRef](#)]
186. Sankhla, S.K.; Nadkarni, J.S.; Bhagwati, S.N. Adoptive immunotherapy using lymphokine-activated killer (LAK) cells and interleukin-2 for recurrent malignant primary brain tumors. *J. Neurooncol.* **1996**, *27*, 133–140. [[CrossRef](#)]
187. Cao, J.-X.; Gao, W.-J.; You, J.; Wu, L.-H.; Wang, Z.-X. Assessment of the efficacy of passive cellular immunotherapy for glioma patients. *Rev. Neurosci.* **2020**, *31*, 427–440. [[CrossRef](#)]
188. Parkhurst, M.; Riley, J.; Dudley, M.; Rosenberg, S. Adoptive transfer of autologous natural killer cells leads to high levels of circulating natural killer cells but does not mediate tumor regression. *Clin. Cancer Res.* **2011**, *17*, 6287–6297. [[CrossRef](#)] [[PubMed](#)]
189. Nagai, K.; Harada, Y.; Harada, H.; Yanagihara, K.; Yonemitsu, Y.; Miyazaki, Y. Highly Activated Ex Vivo-expanded Natural Killer Cells in Patients with Solid Tumors in a Phase I/IIa Clinical Study. *Anticancer Res.* **2020**, *40*, 5687–5700. [[CrossRef](#)] [[PubMed](#)]
190. Li, L.; Li, W.; Wang, C.; Yan, X.; Wang, Y.; Niu, C.; Zhang, X.; Li, M.; Tian, H.; Yao, C.; et al. Adoptive transfer of natural killer cells in combination with chemotherapy improves outcomes of patients with locally advanced colon carcinoma. *Cytotherapy* **2018**, *20*, 134–148. [[CrossRef](#)]
191. Itoh, T.; Ueda, Y.; Okugawa, K.; Fujiwara, H.; Fuji, N.; Yamashita, T.; Fujiki, H.; Harada, S.; Yoshimura, T.; Yamagishi, H. Streptococcal preparation OK432 promotes functional maturation of human monocyte-derived dendritic cells. *Cancer Immunol. Immunother.* **2003**, *52*, 207–214. [[CrossRef](#)]
192. Merchant, R.E.; Grant, A.J.; Merchant, L.H.; Young, H.F. Adoptive immunotherapy for recurrent glioblastoma multiforme using lymphokine activated killer cells and recombinant interleukin-2. *Cancer* **1988**, *62*, 665–671. [[CrossRef](#)]
193. Blancher, A.; Roubinet, F.; Grancher, A.S.; Tremoulet, M.; Bonaté, A.; Delisle, M.B.; Calot, J.P.; Pourreau, C.; Franks, C.; Ducos, J. Local immunotherapy of recurrent glioblastoma multiforme by intracerebral perfusion of interleukin-2 and LAK cells. *Eur. Cytokine Netw.* **1993**, *4*, 331–341.
194. Dillman, R.; Duma, C.; Ellis, R.; Cornforth, A.; Schiltz, P.; Sharp, S.; DePriest, M. Intralesional lymphokine-activated killer cells as adjuvant therapy for primary glioblastoma. *J. Immunother.* **2009**, *32*, 914–919. [[CrossRef](#)]
195. Richards, J. Therapeutic uses of interleukin-2 and lymphokine-activated killer (LAK) cells. *Blood Rev.* **1989**, *3*, 110–119. [[CrossRef](#)]
196. Ciocca, D.R.; Calderwood, S.K. Heat shock proteins in cancer: Diagnostic, prognostic, predictive, and treatment implications. *Cell Stress Chaperones* **2005**, *10*, 86–103. [[CrossRef](#)]
197. Hermisson, M.; Strik, H.; Rieger, J.; Dichgans, J.; Meyermann, R.; Weller, M. Expression and functional activity of heat shock proteins in human glioblastoma multiforme. *Neurology* **2000**, *54*, 1357–1365. [[CrossRef](#)] [[PubMed](#)]
198. Lobinger, D.; Gempt, J.; Sievert, W.; Barz, M.; Schmitt, S.; Nguyen, H.T.; Stangl, S.; Werner, C.; Wang, F.; Wu, Z.; et al. Potential Role of Hsp70 and Activated NK Cells for Prediction of Prognosis in Glioblastoma Patients. *Front. Mol. Biosci.* **2021**, *8*, 669366. [[CrossRef](#)]

199. Krause, S.; Gastpar, R.; Andreesen, R.; Gross, C.; Ullrich, H.; Thonigs, G.; Pfister, K.; Multhoff, G. Treatment of colon and lung cancer patients with ex vivo heat shock protein 70-peptide-activated, autologous natural killer cells: A clinical phase I trial. *Clin. Cancer Res.* **2004**, *10*, 3699–3707. [[CrossRef](#)] [[PubMed](#)]
200. Ruggeri, L.; Mancusi, A.; Capanni, M.; Martelli, M.; Velardi, A. Exploitation of alloreactive NK cells in adoptive immunotherapy of cancer. *Curr. Opin. Immunol.* **2005**, *17*, 211–217. [[CrossRef](#)] [[PubMed](#)]
201. Yang, Y.; Lim, O.; Kim, T.M.; Ahn, Y.-O.; Choi, H.; Chung, H.; Min, B.; Her, J.H.; Cho, S.Y.; Keam, B.; et al. Phase I Study of Random Healthy Donor-Derived Allogeneic Natural Killer Cell Therapy in Patients with Malignant Lymphoma or Advanced Solid Tumors. *Cancer Immunol. Res.* **2016**, *4*, 215–224. [[CrossRef](#)] [[PubMed](#)]
202. Wang, W.; Erbe, A.K.; DeSantes, K.B.; Sondel, P.M. Donor selection for ex vivo-expanded natural killer cells as adoptive cancer immunotherapy. *Future Oncol.* **2017**, *13*, 1043–1047. [[CrossRef](#)]
203. Siegler, U.; Meyer-Monard, S.; Jörger, S.; Stern, M.; Tichelli, A.; Gratwohl, A.; Wodnar-Filipowicz, A.; Kalberer, C.P. Good manufacturing practice-compliant cell sorting and large-scale expansion of single KIR-positive alloreactive human natural killer cells for multiple infusions to leukemia patients. *Cytotherapy* **2010**, *12*, 750–763. [[CrossRef](#)]
204. Natural Killer Cell (CYNK-001) IV Infusion or IT Administration in Adults with Recurrent GBM—ClinicalTrials.gov. Available online: <https://clinicaltrials.gov/ct2/show/NCT04489420?cond=NCT04489420&draw=2&rank=1> (accessed on 10 August 2021).
205. Eshhar, Z.; Waks, T.; Gross, G.; Schindler, D.G. Specific activation and targeting of cytotoxic lymphocytes through chimeric single chains consisting of antibody-binding domains and the gamma or zeta subunits of the immunoglobulin and T-cell receptors. *Proc. Natl. Acad. Sci. USA* **1993**, *90*, 720–724. [[CrossRef](#)]
206. Guedan, S.; Calderon, H.; Posey, A.D.J.; Maus, M.V. Engineering and Design of Chimeric Antigen Receptors. *Mol. Ther. Methods Clin. Dev.* **2019**, *12*, 145–156. [[CrossRef](#)] [[PubMed](#)]
207. Hunter, B.D.; Jacobson, C.A. CAR T-Cell Associated Neurotoxicity: Mechanisms, Clinicopathologic Correlates, and Future Directions. *J. Natl. Cancer Inst.* **2019**, *111*, 646–654. [[CrossRef](#)] [[PubMed](#)]
208. Tang, X.; Yang, L.; Li, Z.; Nalin, A.P.; Dai, H.; Xu, T.; Yin, J.; You, F.; Zhu, M.; Shen, W.; et al. First-in-man clinical trial of CAR NK-92 cells: Safety test of CD33-CAR NK-92 cells in patients with relapsed and refractory acute myeloid leukemia. *Am. J. Cancer Res.* **2018**, *8*, 1083–1089. [[PubMed](#)]
209. Karadimitris, A. Cord Blood CAR-NK Cells: Favorable Initial Efficacy and Toxicity but Durability of Clinical Responses Not Yet Clear. *Cancer Cell* **2020**, *37*, 426–427. [[CrossRef](#)] [[PubMed](#)]
210. Lang, S.; Vujanovic, N.L.; Wollenberg, B.; Whiteside, T.L. Absence of B7.1-CD28/CTLA-4-mediated co-stimulation in human NK cells. *Eur. J. Immunol.* **1998**, *28*, 780–786. [[CrossRef](#)]
211. Pfefflerle, A.; Huntington, N.D. You Have Got a Fast CAR: Chimeric Antigen Receptor NK Cells in Cancer Therapy. *Cancers* **2020**, *12*, 706. [[CrossRef](#)]
212. Oberschmidt, O.; Kloess, S.; Koehl, U. Redirected Primary Human Chimeric Antigen Receptor Natural Killer Cells As an “Off-the-Shelf Immunotherapy” for Improvement in Cancer Treatment. *Front. Immunol.* **2017**, *8*, 654. [[CrossRef](#)]
213. Marcus, A.; Eshhar, Z. Allogeneic chimeric antigen receptor-modified cells for adoptive cell therapy of cancer. *Expert Opin. Biol. Ther.* **2014**, *14*, 947–954. [[CrossRef](#)] [[PubMed](#)]
214. Boissel, L.; Betancur, M.; Wels, W.S.; Tuncer, H.; Klingemann, H. Transfection with mRNA for CD19 specific chimeric antigen receptor restores NK cell mediated killing of CLL cells. *Leuk. Res.* **2009**, *33*, 1255–1259. [[CrossRef](#)]
215. Genßler, S.; Burger, M.C.; Zhang, C.; Oelsner, S.; Mildnerberger, I.; Wagner, M.; Steinbach, J.P.; Wels, W.S. Dual targeting of glioblastoma with chimeric antigen receptor-engineered natural killer cells overcomes heterogeneity of target antigen expression and enhances antitumor activity and survival. *Oncimmunology* **2015**, *5*, e1119354. [[CrossRef](#)] [[PubMed](#)]
216. Liu, E.; Tong, Y.; Dotti, G.; Shaim, H.; Savoldo, B.; Mukherjee, M.; Orange, J.; Wan, X.; Lu, X.; Reynolds, A.; et al. Cord blood NK cells engineered to express IL-15 and a CD19-targeted CAR show long-term persistence and potent antitumor activity. *Leukemia* **2018**, *32*, 520–531. [[CrossRef](#)] [[PubMed](#)]
217. Marin, V.; Kakuda, H.; Dander, E.; Imai, C.; Campana, D.; Biondi, A.; D’Amico, G. Enhancement of the anti-leukemic activity of cytokine induced killer cells with an anti-CD19 chimeric receptor delivering a 4-1BB-zeta activating signal. *Exp. Hematol.* **2007**, *35*, 1388–1397. [[CrossRef](#)]
218. Xu, Y.; Liu, Q.; Zhong, M.; Wang, Z.; Chen, Z.; Zhang, Y.; Xing, H.; Tian, Z.; Tang, K.; Liao, X.; et al. 2B4 costimulatory domain enhancing cytotoxic ability of anti-CD5 chimeric antigen receptor engineered natural killer cells against T cell malignancies. *J. Hematol. Oncol.* **2019**, *12*, 49. [[CrossRef](#)] [[PubMed](#)]
219. Huang, Y.; Zeng, J.; Liu, T.; Xu, Q.; Song, X.; Zeng, J. DNAM1 and 2B4 Costimulatory Domains Enhance the Cytotoxicity of Anti-GPC3 Chimeric Antigen Receptor-Modified Natural Killer Cells Against Hepatocellular Cancer Cells in vitro. *Cancer Manag. Res.* **2020**, *12*, 3247–3255. [[CrossRef](#)]
220. Marofi, F.; Rahman, H.S.; Thangavelu, L.; Dorofeev, A.; Bayas-Morejón, F.; Shirafkan, N.; Shomali, N.; Chartrand, M.S.; Jaharian, M.; Vahedi, G.; et al. Renaissance of armored immune effector cells, CAR-NK cells, brings the higher hope for successful cancer therapy. *Stem Cell Res. Ther.* **2021**, *12*, 200. [[CrossRef](#)] [[PubMed](#)]
221. Imai, C.; Iwamoto, S.; Campana, D. Genetic modification of primary natural killer cells overcomes inhibitory signals and induces specific killing of leukemic cells. *Blood* **2005**, *106*, 376–383. [[CrossRef](#)] [[PubMed](#)]

222. Töpfer, K.; Cartellieri, M.; Michen, S.; Wiedemuth, R.; Müller, N.; Lindemann, D.; Bachmann, M.; Füssel, M.; Schackert, G.; Temme, A. DAP12-based activating chimeric antigen receptor for NK cell tumor immunotherapy. *J. Immunol.* **2015**, *194*, 3201–3212. [[CrossRef](#)]
223. Lanier, L.L. NK cell recognition. *Annu. Rev. Immunol.* **2005**, *23*, 225–274. [[CrossRef](#)]
224. Xiao, L.; Cen, D.; Gan, H.; Sun, Y.; Huang, N.; Xiong, H.; Jin, Q.; Su, L.; Liu, X.; Wang, K.; et al. Adoptive Transfer of NKG2D CAR mRNA-Engineered Natural Killer Cells in Colorectal Cancer Patients. *Mol. Ther.* **2019**, *27*, 1114–1125. [[CrossRef](#)] [[PubMed](#)]
225. Santomasso, B.; Bachier, C.; Westin, J.; Rezvani, K.; Shpall, E.J. The Other Side of CAR T-Cell Therapy: Cytokine Release Syndrome, Neurologic Toxicity, and Financial Burden. *Am. Soc. Clin. Oncol. Educ. Book* **2019**, *39*, 433–444. [[CrossRef](#)]
226. Chou, C.K.; Turtle, C.J. Insight into mechanisms associated with cytokine release syndrome and neurotoxicity after CD19 CAR-T cell immunotherapy. *Bone Marrow Transplant.* **2019**, *54*, 780–784. [[CrossRef](#)]
227. Klingemann, H. Are natural killer cells superior CAR drivers? *Oncoimmunology* **2014**, *3*, e28147. [[CrossRef](#)]
228. Gill, S.; Olson, J.A.; Negrin, R.S. Natural killer cells in allogeneic transplantation: Effect on engraftment, graft-versus-tumor, and graft-versus-host responses. *Biol. Blood Marrow Transplant.* **2009**, *15*, 765–776. [[CrossRef](#)]
229. Herrera, L.; Santos, S.; Vesga, M.A.; Anguita, J.; Martin-Ruiz, I.; Carrascosa, T.; Juan, M.; Eguizabal, C. Adult peripheral blood and umbilical cord blood NK cells are good sources for effective CAR therapy against CD19 positive leukemic cells. *Sci. Rep.* **2019**, *9*, 18729. [[CrossRef](#)]
230. Olson, J.A.; Leveson-Gower, D.B.; Gill, S.; Baker, J.; Beilhack, A.; Negrin, R.S. NK cells mediate reduction of GVHD by inhibiting activated, alloreactive T cells while retaining GVT effects. *Blood* **2010**, *115*, 4293–4301. [[CrossRef](#)]
231. Zhang, Y.; Wallace, D.L.; de Lara, C.M.; Ghattas, H.; Asquith, B.; Worth, A.; Griffin, G.E.; Taylor, G.P.; Tough, D.F.; Beverley, P.C.L.; et al. In vivo kinetics of human natural killer cells: The effects of ageing and acute and chronic viral infection. *Immunology* **2007**, *121*, 258–265. [[CrossRef](#)]
232. Oei, V.Y.S.; Siernicka, M.; Graczyk-Jarzynka, A.; Hoel, H.J.; Yang, W.; Palacios, D.; Almåsbak, H.; Bajor, M.; Clement, D.; Brandt, L.; et al. Intrinsic Functional Potential of NK-Cell Subsets Constrains Retargeting Driven by Chimeric Antigen Receptors. *Cancer Immunol. Res.* **2018**, *6*, 467–480. [[CrossRef](#)]
233. Majzner, R.G.; Mackall, C.L. Tumor Antigen Escape from CAR T-cell Therapy. *Cancer Discov.* **2018**, *8*, 1219–1226. [[CrossRef](#)]
234. O'Rourke, D.M.; Nasrallah, M.P.; Desai, A.; Melenhorst, J.J.; Mansfield, K.; Morrisette, J.J.D.; Martinez-Lage, M.; Brem, S.; Maloney, E.; Shen, A.; et al. A single dose of peripherally infused EGFRvIII-directed CAR T cells mediates antigen loss and induces adaptive resistance in patients with recurrent glioblastoma. *Sci. Transl. Med.* **2017**, *9*, eaaa0984. [[CrossRef](#)]
235. Burger, M.C.; Zhang, C.; Harter, P.N.; Romanski, A.; Strassheimer, F.; Senft, C.; Tonn, T.; Steinbach, J.P.; Wels, W.S. CAR-Engineered NK Cells for the Treatment of Glioblastoma: Turning Innate Effectors Into Precision Tools for Cancer Immunotherapy. *Front. Immunol.* **2019**, *10*, 2683. [[CrossRef](#)]
236. Jiang, H.; Zhang, W.; Shang, P.; Zhang, H.; Fu, W.; Ye, F.; Zeng, T.; Huang, H.; Zhang, X.; Sun, W.; et al. Transfection of chimeric anti-CD138 gene enhances natural killer cell activation and killing of multiple myeloma cells. *Mol. Oncol.* **2014**, *8*, 297–310. [[CrossRef](#)]
237. Zhang, C.; Burger, M.C.; Jennewein, L.; Genßler, S.; Schönfeld, K.; Zeiner, P.; Hattingen, E.; Harter, P.N.; Mittelbronn, M.; Tonn, T.; et al. ErbB2/HER2-Specific NK Cells for Targeted Therapy of Glioblastoma. *J. Natl. Cancer Inst.* **2016**, *108*. [[CrossRef](#)]
238. Cao, B.; Liu, M.; Wang, L.; Liang, B.; Feng, Y.; Chen, X.; Shi, Y.; Zhang, J.; Ye, X.; Tian, Y.; et al. Use of chimeric antigen receptor NK-92 cells to target mesothelin in ovarian cancer. *Biochem. Biophys. Res. Commun.* **2020**, *524*, 96–102. [[CrossRef](#)]
239. Zhang, Q.; Tian, K.; Xu, J.; Zhang, H.; Li, L.; Fu, Q.; Chai, D.; Li, H.; Zheng, J. Synergistic Effects of Cabozantinib and EGFR-Specific CAR-NK-92 Cells in Renal Cell Carcinoma. *J. Immunol. Res.* **2017**, *2017*, 6915912. [[CrossRef](#)]
240. Han, J.; Chu, J.; Keung Chan, W.; Zhang, J.; Wang, Y.; Cohen, J.B.; Victor, A.; Meisen, W.H.; Kim, S.-H.; Grandi, P.; et al. CAR-Engineered NK Cells Targeting Wild-Type EGFR and EGFRvIII Enhance Killing of Glioblastoma and Patient-Derived Glioblastoma Stem Cells. *Sci. Rep.* **2015**, *5*, 11483. [[CrossRef](#)]
241. Murakami, T.; Nakazawa, T.; Natsume, A.; Nishimura, F.; Nakamura, M.; Matsuda, R.; Omoto, K.; Tanaka, Y.; Shida, Y.; Park, Y.-S.; et al. Novel Human NK Cell Line Carrying CAR Targeting EGFRvIII Induces Antitumor Effects in Glioblastoma Cells. *Anticancer Res.* **2018**, *38*, 5049–5056. [[CrossRef](#)]
242. Chen, X.; Han, J.; Chu, J.; Zhang, L.; Zhang, J.; Chen, C.; Chen, L.; Wang, Y.; Wang, H.; Yi, L.; et al. A combinational therapy of EGFR-CAR NK cells and oncolytic herpes simplex virus 1 for breast cancer brain metastases. *Oncotarget* **2016**, *7*, 27764–27777. [[CrossRef](#)]
243. Xia, N.; Haopeng, P.; Gong, J.U.; Lu, J.; Chen, Z.; Zheng, Y.; Wang, Z.; Sun, Y.U.; Yang, Z.; Hoffman, R.M.; et al. Robo1-specific CAR-NK Immunotherapy Enhances Efficacy of (125)I Seed Brachytherapy in an Orthotopic Mouse Model of Human Pancreatic Carcinoma. *Anticancer Res.* **2019**, *39*, 5919–5925. [[CrossRef](#)]
244. Qu, Y.; Bi, J.Z. Killing effect of Robo1 targeted Chimeric Antigen Receptor modified NK92 cells against glioma and neuroblastoma cells. *Zhonghua Yi Xue Za Zhi* **2018**, *98*, 860–866. [[CrossRef](#)]
245. Bigner, S.H.; Humphrey, P.A.; Wong, A.J.; Vogelstein, B.; Mark, J.; Friedman, H.S.; Bigner, D.D. Characterization of the epidermal growth factor receptor in human glioma cell lines and xenografts. *Cancer Res.* **1990**, *50*, 8017–8022.
246. Aldape, K.D.; Ballman, K.; Furth, A.; Buckner, J.C.; Giannini, C.; Burger, P.C.; Scheithauer, B.W.; Jenkins, R.B.; James, C.D. Immunohistochemical detection of EGFRvIII in high malignancy grade astrocytomas and evaluation of prognostic significance. *J. Neuropathol. Exp. Neurol.* **2004**, *63*, 700–707. [[CrossRef](#)] [[PubMed](#)]

247. Brennan, C.W.; Verhaak, R.G.W.; McKenna, A.; Campos, B.; Nounshmehr, H.; Salama, S.R.; Zheng, S.; Chakravarty, D.; Sanborn, J.Z.; Berman, S.H.; et al. The somatic genomic landscape of glioblastoma. *Cell* **2013**, *155*, 462–477. [[CrossRef](#)]
248. Nakazawa, T.; Murakami, T.; Natsume, A.; Nishimura, F.; Morimoto, T.; Matsuda, R.; Nakamura, M.; Yamada, S.; Nakagawa, I.; Park, Y.-S.; et al. KHYG-1 Cells with EGFRvIII-specific CAR Induced a Pseudoprogession-like Feature in Subcutaneous Tumours Derived from Glioblastoma-like Cells. *Anticancer Res.* **2020**, *40*, 3231–3237. [[CrossRef](#)]
249. Müller, N.; Michen, S.; Tietze, S.; Töpfer, K.; Schulte, A.; Lamszus, K.; Schmitz, M.; Schackert, G.; Pastan, I.; Temme, A. Engineering NK Cells Modified with an EGFRvIII-specific Chimeric Antigen Receptor to Overexpress CXCR4 Improves Immunotherapy of CXCL12/SDF-1 α -secreting Glioblastoma. *J. Immunother.* **2015**, *38*, 197–210. [[CrossRef](#)] [[PubMed](#)]
250. Ahmed, N.; Salsman, V.S.; Kew, Y.; Shaffer, D.; Powell, S.; Zhang, Y.J.; Grossman, R.G.; Heslop, H.E.; Gottschalk, S. HER2-specific T cells target primary glioblastoma stem cells and induce regression of autologous experimental tumors. *Clin. Cancer Res.* **2010**, *16*, 474–485. [[CrossRef](#)]
251. Koka, V.; Potti, A.; Forseen, S.E.; Pervez, H.; Fraiman, G.N.; Koch, M.; Levitt, R. Role of Her-2/neu overexpression and clinical determinants of early mortality in glioblastoma multiforme. *Am. J. Clin. Oncol.* **2003**, *26*, 332–335. [[CrossRef](#)]
252. Schlegel, J.; Stumm, G.; Brändle, K.; Merdes, A.; Mechttersheimer, G.; Hynes, N.E.; Kiessling, M. Amplification and differential expression of members of the erbB-gene family in human glioblastoma. *J. Neurooncol.* **1994**, *22*, 201–207. [[CrossRef](#)]
253. Burger, M.C.; Mildenerger, I.; Zhang, C.; Ihrig, K.; Wagner, M.; Mittelbronn, M.; Senft, C.; Tonn, T.; Wels, W.S.; Steinbach, J.P. P04.05 The CAR2BRAIN study: A monocentric phase I trial with ErbB2-specific NK-92/5.28.z cells in recurrent glioblastoma. *Neuro-Oncol.* **2016**, *18*, iv24–iv25. [[CrossRef](#)]
254. Carlsten, M.; Childs, R.W. Genetic Manipulation of NK Cells for Cancer Immunotherapy: Techniques and Clinical Implications. *Front. Immunol.* **2015**, *6*, 266. [[CrossRef](#)] [[PubMed](#)]
255. Colamartino, A.B.L.; Lemieux, W.; Bifsha, P.; Nicoletti, S.; Chakravarti, N.; Sanz, J.; Roméro, H.; Selleri, S.; Béland, K.; Guiot, M.; et al. Efficient and Robust NK-Cell Transduction with Baboon Envelope Pseudotyped Lentivector. *Front. Immunol.* **2019**, *10*, 2873. [[CrossRef](#)] [[PubMed](#)]
256. Fenard, D.; Ingraio, D.; Seye, A.; Buisset, J.; Genries, S.; Martin, S.; Kichler, A.; Galy, A. Vectofusin-1, a new viral entry enhancer, strongly promotes lentiviral transduction of human hematopoietic stem cells. *Mol. Ther. Nucleic Acids* **2013**, *2*, e90. [[CrossRef](#)]
257. Papayannakos, C.; Daniel, R. Understanding lentiviral vector chromatin targeting: Working to reduce insertional mutagenic potential for gene therapy. *Gene Ther.* **2013**, *20*, 581–588. [[CrossRef](#)]
258. Li, Y.; Hermanson, D.L.; Moriarity, B.S.; Kaufman, D.S. Human iPSC-Derived Natural Killer Cells Engineered with Chimeric Antigen Receptors Enhance Anti-tumor Activity. *Cell Stem Cell* **2018**, *23*, 181–192.e5. [[CrossRef](#)] [[PubMed](#)]
259. Huang, R.-S.; Shih, H.-A.; Lai, M.-C.; Chang, Y.-J.; Lin, S. Enhanced NK-92 Cytotoxicity by CRISPR Genome Engineering Using Cas9 Ribonucleoproteins. *Front. Immunol.* **2020**, *11*, 1008. [[CrossRef](#)]
260. Meazza, R.; Azzarone, B.; Orengo, A.M.; Ferrini, S. Role of common-gamma chain cytokines in NK cell development and function: Perspectives for immunotherapy. *J. Biomed. Biotechnol.* **2011**, *2011*, 861920. [[CrossRef](#)] [[PubMed](#)]
261. Xu, X.; Huang, W.; Heczey, A.; Liu, D.; Guo, L.; Wood, M.; Jin, J.; Courtney, A.N.; Liu, B.; Di Pierro, E.J.; et al. NKT Cells Coexpressing a GD2-Specific Chimeric Antigen Receptor and IL15 Show Enhanced In Vivo Persistence and Antitumor Activity against Neuroblastoma. *Clin. Cancer Res.* **2019**, *25*, 7126–7138. [[CrossRef](#)]
262. Yvon, E.S.; Burga, R.; Powell, A.; Cruz, C.R.; Fernandes, R.; Barese, C.; Nguyen, T.; Abdel-Baki, M.S.; Bollard, C.M. Cord blood natural killer cells expressing a dominant negative TGF- β receptor: Implications for adoptive immunotherapy for glioblastoma. *Cytotherapy* **2017**, *19*, 408–418. [[CrossRef](#)]
263. Yang, B.; Liu, H.; Shi, W.; Wang, Z.; Sun, S.; Zhang, G.; Hu, Y.; Liu, T.; Jiao, S. Blocking transforming growth factor- β signaling pathway augments antitumor effect of adoptive NK-92 cell therapy. *Int. Immunopharmacol.* **2013**, *17*, 198–204. [[CrossRef](#)]
264. Rosenberg, S.A.; Lotze, M.T.; Muul, L.M.; Leitman, S.; Chang, A.E.; Ettinghausen, S.E.; Matory, Y.L.; Skibber, J.M.; Shiloni, E.; Vetto, J.T. Observations on the systemic administration of autologous lymphokine-activated killer cells and recombinant interleukin-2 to patients with metastatic cancer. *N. Engl. J. Med.* **1985**, *313*, 1485–1492. [[CrossRef](#)]
265. Phillips, J.H.; Lanier, L.L. Dissection of the lymphokine-activated killer phenomenon. Relative contribution of peripheral blood natural killer cells and T lymphocytes to cytolysis. *J. Exp. Med.* **1986**, *164*, 814–825. [[CrossRef](#)]
266. Gaffen, S.L.; Liu, K.D. Overview of interleukin-2 function, production and clinical applications. *Cytokine* **2004**, *28*, 109–123. [[CrossRef](#)] [[PubMed](#)]
267. West, W.H.; Tauer, K.W.; Yannelli, J.R.; Marshall, G.D.; Orr, D.W.; Thurman, G.B.; Oldham, R.K. Constant-infusion recombinant interleukin-2 in adoptive immunotherapy of advanced cancer. *N. Engl. J. Med.* **1987**, *316*, 898–905. [[CrossRef](#)] [[PubMed](#)]
268. Schwartzentruber, D.J. High-dose interleukin-2 is an intensive treatment regardless of the venue of administration. *Cancer J.* **2001**, *7*, 103–104.
269. Floros, T.; Tarhini, A.A. Anticancer Cytokines: Biology and Clinical Effects of Interferon- α 2, Interleukin (IL)-2, IL-15, IL-21, and IL-12. *Semin. Oncol.* **2015**, *42*, 539–548. [[CrossRef](#)]
270. Childs, R.W.; Carlsten, M. Therapeutic approaches to enhance natural killer cell cytotoxicity against cancer: The force awakens. *Nat. Rev. Drug Discov.* **2015**, *14*, 487–498. [[CrossRef](#)] [[PubMed](#)]
271. Levin, A.M.; Bates, D.L.; Ring, A.M.; Krieg, C.; Lin, J.T.; Su, L.; Moraga, I.; Raeber, M.E.; Bowman, G.R.; Novick, P.; et al. Exploiting a natural conformational switch to engineer an interleukin-2 “superkine”. *Nature* **2012**, *484*, 529–533. [[CrossRef](#)] [[PubMed](#)]

272. Mitra, S.; Ring, A.M.; Amarnath, S.; Spangler, J.B.; Li, P.; Ju, W.; Fischer, S.; Oh, J.; Spolski, R.; Weiskopf, K.; et al. Interleukin-2 activity can be fine tuned with engineered receptor signaling clamps. *Immunity* **2015**, *42*, 826–838. [[CrossRef](#)]
273. Sakamoto, N.; Ishikawa, T.; Kokura, S.; Okayama, T.; Oka, K.; Ideno, M.; Sakai, F.; Kato, A.; Tanabe, M.; Enoki, T.; et al. Phase I clinical trial of autologous NK cell therapy using novel expansion method in patients with advanced digestive cancer. *J. Transl. Med.* **2015**, *13*, 277. [[CrossRef](#)] [[PubMed](#)]
274. Szmania, S.; Lapteva, N.; Garg, T.; Greenway, A.; Lingo, J.; Nair, B.; Stone, K.; Woods, E.; Khan, J.; Stivers, J.; et al. Ex vivo-expanded natural killer cells demonstrate robust proliferation in vivo in high-risk relapsed multiple myeloma patients. *J. Immunother.* **2015**, *38*, 24–36. [[CrossRef](#)] [[PubMed](#)]
275. Shaffer, B.C.; Le Luduec, J.-B.; Forlenza, C.; Jakubowski, A.A.; Perales, M.-A.; Young, J.W.; Hsu, K.C. Phase II Study of Haploidentical Natural Killer Cell Infusion for Treatment of Relapsed or Persistent Myeloid Malignancies Following Allogeneic Hematopoietic Cell Transplantation. *Biol. Blood Marrow Transplant.* **2016**, *22*, 705–709. [[CrossRef](#)]
276. Colombo, F.; Barzon, L.; Franchin, E.; Pacenti, M.; Pinna, V.; Danieli, D.; Zanusso, M.; Palù, G. Combined HSV-TK/IL-2 gene therapy in patients with recurrent glioblastoma multiforme: Biological and clinical results. *Cancer Gene Ther.* **2005**, *12*, 835–848. [[CrossRef](#)] [[PubMed](#)]
277. Qiao, H.B.; Li, J.; Lv, L.-J.; Nie, B.-J.; Lu, P.; Xue, F.; Zhang, Z.-M. The effects of interleukin 2 and rAd-p53 as a treatment for glioblastoma. *Mol. Med. Rep.* **2018**, *17*, 4853–4859. [[CrossRef](#)] [[PubMed](#)]
278. Conlon, K.C.; Lugli, E.; Welles, H.C.; Rosenberg, S.A.; Fojo, A.T.; Morris, J.C.; Fleisher, T.A.; Dubois, S.P.; Perera, L.P.; Stewart, D.M.; et al. Redistribution, hyperproliferation, activation of natural killer cells and CD8 T cells, and cytokine production during first-in-human clinical trial of recombinant human interleukin-15 in patients with cancer. *J. Clin. Oncol.* **2015**, *33*, 74–82. [[CrossRef](#)] [[PubMed](#)]
279. Miller, J.S.; Morishima, C.; McNeel, D.G.; Patel, M.R.; Kohrt, H.E.K.; Thompson, J.A.; Sondel, P.M.; Wakelee, H.A.; Disis, M.L.; Kaiser, J.C.; et al. A First-in-Human Phase I Study of Subcutaneous Outpatient Recombinant Human IL15 (rhIL15) in Adults with Advanced Solid Tumors. *Clin. Cancer Res.* **2018**, *24*, 1525–1535. [[CrossRef](#)] [[PubMed](#)]
280. Prlic, M.; Blazar, B.R.; Farrar, M.A.; Jameson, S.C. In vivo survival and homeostatic proliferation of natural killer cells. *J. Exp. Med.* **2003**, *197*, 967–976. [[CrossRef](#)]
281. Fehniger, T.A.; Caligiuri, M.A. Interleukin 15: Biology and relevance to human disease. *Blood* **2001**, *97*, 14–32. [[CrossRef](#)]
282. Leclercq, G.; Debacker, V.; de Smedt, M.; Plum, J. Differential effects of interleukin-15 and interleukin-2 on differentiation of bipotential T/natural killer progenitor cells. *J. Exp. Med.* **1996**, *184*, 325–336. [[CrossRef](#)] [[PubMed](#)]
283. Pillet, A.-H.; Bugault, F.; Thèze, J.; Chakrabarti, L.A.; Rose, T. A programmed switch from IL-15- to IL-2-dependent activation in human NK cells. *J. Immunol.* **2009**, *182*, 6267–6277. [[CrossRef](#)] [[PubMed](#)]
284. Pillet, A.-H.; Thèze, J.; Rose, T. Interleukin (IL)-2 and IL-15 have different effects on human natural killer lymphocytes. *Hum. Immunol.* **2011**, *72*, 1013–1017. [[CrossRef](#)] [[PubMed](#)]
285. Stoklasek, T.A.; Schluns, K.S.; Lefrançois, L. Combined IL-15/IL-15R α immunotherapy maximizes IL-15 activity in vivo. *J. Immunol.* **2006**, *177*, 6072–6080. [[CrossRef](#)] [[PubMed](#)]
286. Xu, W.; Jones, M.; Liu, B.; Zhu, X.; Johnson, C.B.; Edwards, A.C.; Kong, L.; Jeng, E.K.; Han, K.; Marcus, W.D.; et al. Efficacy and mechanism-of-action of a novel superagonist interleukin-15: Interleukin-15 receptor α Su/Fc fusion complex in syngeneic murine models of multiple myeloma. *Cancer Res.* **2013**, *73*, 3075–3086. [[CrossRef](#)]
287. Dubois, S.; Patel, H.J.; Zhang, M.; Waldmann, T.A.; Müller, J.R. Preassociation of IL-15 with IL-15R α -IgG1-Fc enhances its activity on proliferation of NK and CD8⁺/CD44^{high} T cells and its antitumor action. *J. Immunol.* **2008**, *180*, 2099–2106. [[CrossRef](#)] [[PubMed](#)]
288. Chen, Y.; Chen, B.; Yang, T.; Xiao, W.; Qian, L.; Ding, Y.; Ji, M.; Ge, X.; Gong, W. Human fused NKG2D-IL-15 protein controls xenografted human gastric cancer through the recruitment and activation of NK cells. *Cell. Mol. Immunol.* **2017**, *14*, 293–307. [[CrossRef](#)] [[PubMed](#)]
289. Thaysen-Andersen, M.; Chertova, E.; Bergamaschi, C.; Moh, E.S.X.; Chertov, O.; Roser, J.; Sowder, R.; Bear, J.; Lifson, J.; Packer, N.H.; et al. Recombinant human heterodimeric IL-15 complex displays extensive and reproducible N- and O-linked glycosylation. *Glycoconj. J.* **2016**, *33*, 417–433. [[CrossRef](#)]
290. Rosario, M.; Liu, B.; Kong, L.; Collins, L.I.; Schneider, S.E.; Chen, X.; Han, K.; Jeng, E.K.; Rhode, P.R.; Leong, J.W.; et al. The IL-15-Based ALT-803 Complex Enhances Fc γ RIIIa-Triggered NK Cell Responses and In Vivo Clearance of B Cell Lymphomas. *Clin. Cancer Res.* **2016**, *22*, 596–608. [[CrossRef](#)]
291. Han, K.; Zhu, X.; Liu, B.; Jeng, E.; Kong, L.; Yovandich, J.L.; Vyas, V.V.; Marcus, W.D.; Chavaille, P.-A.; Romero, C.A.; et al. IL-15: IL-15 receptor α superagonist complex: High-level co-expression in recombinant mammalian cells, purification and characterization. *Cytokine* **2011**, *56*, 804–810. [[CrossRef](#)]
292. Margolin, K.; Morishima, C.; Velcheti, V.; Miller, J.S.; Lee, S.M.; Silk, A.W.; Holtan, S.G.; Lacroix, A.M.; Fling, S.P.; Kaiser, J.C.; et al. Phase I Trial of ALT-803, A Novel Recombinant IL15 Complex, in Patients with Advanced Solid Tumors. *Clin. Cancer Res.* **2018**, *24*, 5552–5561. [[CrossRef](#)]
293. Conlon, K.C.; Potter, E.L.; Pittaluga, S.; Lee, C.-C.R.; Miljkovic, M.D.; Fleisher, T.A.; Dubois, S.; Bryant, B.R.; Petrus, M.; Perera, L.P.; et al. IL15 by Continuous Intravenous Infusion to Adult Patients with Solid Tumors in a Phase I Trial Induced Dramatic NK-Cell Subset Expansion. *Clin. Cancer Res.* **2019**, *25*, 4945–4954. [[CrossRef](#)] [[PubMed](#)]

294. Dubois, S.P.; Miljkovic, M.D.; Fleisher, T.A.; Pittaluga, S.; Hsu-Albert, J.; Bryant, B.R.; Petrus, M.N.; Perera, L.P.; Müller, J.R.; Shih, J.H.; et al. Short-course IL-15 given as a continuous infusion led to a massive expansion of effective NK cells: Implications for combination therapy with antitumor antibodies. *J. Immunother. Cancer* **2021**, *9*, e002193. [[CrossRef](#)]
295. Schmohl, J.U.; Felices, M.; Taras, E.; Miller, J.S.; Vallera, D.A. Enhanced ADCC and NK Cell Activation of an Anticarcinoma Bispecific Antibody by Genetic Insertion of a Modified IL-15 Cross-linker. *Mol. Ther.* **2016**, *24*, 1312–1322. [[CrossRef](#)] [[PubMed](#)]
296. Krenciute, G.; Prinzing, B.L.; Yi, Z.; Wu, M.-F.; Liu, H.; Dotti, G.; Balyasnikova, I.V.; Gottschalk, S. Transgenic Expression of IL15 Improves Antiglioma Activity of IL13R α 2-CAR T Cells but Results in Antigen Loss Variants. *Cancer Immunol. Res.* **2017**, *5*, 571–581. [[CrossRef](#)] [[PubMed](#)]
297. Zhang, Q.; Zhang, J.; Tian, Y.; Zhu, G.; Liu, S.; Liu, F. Efficacy of a novel double-controlled oncolytic adenovirus driven by the Ki67 core promoter and armed with IL-15 against glioblastoma cells. *Cell Biosci.* **2020**, *10*, 124. [[CrossRef](#)]
298. Yang, G.-T.; Chou, R.-H.; Chang, W.-J.; Wei, C.-W.; Yu, Y.-L. Long-term expression of rAAV2-hIL15 enhances immunoglobulin production and lymphokine-activated killer cell-mediated human glioblastoma cell death. *Mol. Clin. Oncol.* **2013**, *1*, 321–325. [[CrossRef](#)] [[PubMed](#)]
299. Ma, R.; Lu, T.; Li, Z.; Teng, K.-Y.; Mansour, A.G.; Yu, M.; Tian, L.; Xu, B.; Ma, S.; Zhang, J.; et al. An oncolytic virus expressing IL-15/IL-15R α combined with off-the-shelf EGFR-CAR NK cells targets glioblastoma. *Cancer Res.* **2021**, *81*, 3635–3648. [[CrossRef](#)] [[PubMed](#)]
300. Mathios, D.; Park, C.-K.; Marcus, W.D.; Alter, S.; Rhode, P.R.; Jeng, E.K.; Wong, H.C.; Pardoll, D.M.; Lim, M. Therapeutic administration of IL-15 superagonist complex ALT-803 leads to long-term survival and durable antitumor immune response in a murine glioblastoma model. *Int. J. Cancer* **2016**, *138*, 187–194. [[CrossRef](#)]
301. Gomes-Giacoa, E.; Miyake, M.; Goodison, S.; Sriharan, A.; Zhang, G.; You, L.; Egan, J.O.; Rhode, P.R.; Parker, A.S.; Chai, K.X.; et al. Intravesical ALT-803 and BCG treatment reduces tumor burden in a carcinogen induced bladder cancer rat model; a role for cytokine production and NK cell expansion. *PLoS ONE* **2014**, *9*, e96705. [[CrossRef](#)]
302. Zhu, L.; Kalimuthu, S.; Oh, J.M.; Gangadaran, P.; Baek, S.H.; Jeong, S.Y.; Lee, S.-W.; Lee, J.; Ahn, B.-C. Enhancement of antitumor potency of extracellular vesicles derived from natural killer cells by IL-15 priming. *Biomaterials* **2019**, *190–191*, 38–50. [[CrossRef](#)]
303. Smyth, M.J.; Taniguchi, M.; Street, S.E. The anti-tumor activity of IL-12: Mechanisms of innate immunity that are model and dose dependent. *J. Immunol.* **2000**, *165*, 2665–2670. [[CrossRef](#)] [[PubMed](#)]
304. Sahin, U.; Kraft-Bauer, S.; Ohnesorge, S.; Pfreundschuh, M.; Renner, C. Interleukin-12 increases bispecific-antibody-mediated natural killer cell cytotoxicity against human tumors. *Cancer Immunol. Immunother.* **1996**, *42*, 9–14. [[CrossRef](#)]
305. Parihar, R.; Nadella, P.; Lewis, A.; Jensen, R.; De Hoff, C.; Dierksheide, J.E.; VanBuskirk, A.M.; Magro, C.M.; Young, D.C.; Shapiro, C.L.; et al. A phase I study of interleukin 12 with trastuzumab in patients with human epidermal growth factor receptor-2-overexpressing malignancies: Analysis of sustained interferon gamma production in a subset of patients. *Clin. Cancer Res.* **2004**, *10*, 5027–5037. [[CrossRef](#)] [[PubMed](#)]
306. Gokhale, M.S.; Vainstein, V.; Tom, J.; Thomas, S.; Lawrence, C.E.; Gluzman-Poltorak, Z.; Siebers, N.; Basile, L.A. Single low-dose rHuIL-12 safely triggers multilineage hematopoietic and immune-mediated effects. *Exp. Hematol. Oncol.* **2014**, *3*, 11. [[CrossRef](#)] [[PubMed](#)]
307. Basile, L.A.; Gallaher, T.K.; Shibata, D.; Miller, J.D.; Douer, D. Multilineage hematopoietic recovery with concomitant antitumor effects using low dose Interleukin-12 in myelosuppressed tumor-bearing mice. *J. Transl. Med.* **2008**, *6*, 26. [[CrossRef](#)] [[PubMed](#)]
308. Fallon, J.; Tighe, R.; Kradjian, G.; Guzman, W.; Bernhardt, A.; Neuteboom, B.; Lan, Y.; Sabzevari, H.; Schlom, J.; Greiner, J.W. The immunocytokine NHS-IL12 as a potential cancer therapeutic. *Oncotarget* **2014**, *5*, 1869–1884. [[CrossRef](#)] [[PubMed](#)]
309. Agliardi, G.; Liuzzi, A.R.; Hotblack, A.; De Feo, D.; Núñez, N.; Stowe, C.L.; Friebe, E.; Nannini, F.; Rindlisbacher, L.; Roberts, T.A.; et al. Intratumoral IL-12 delivery empowers CAR-T cell immunotherapy in a pre-clinical model of glioblastoma. *Nat. Commun.* **2021**, *12*, 444. [[CrossRef](#)] [[PubMed](#)]
310. Brempeles, K.J.; Cowan, C.M.; Kreuser, S.A.; Labadie, K.P.; Prieskorn, B.M.; Lieberman, N.A.P.; Ene, C.I.; Moyes, K.W.; Chinn, H.; DeGolier, K.R.; et al. Genetically engineered macrophages persist in solid tumors and locally deliver therapeutic proteins to activate immune responses. *J. Immunother. Cancer* **2020**, *8*, e001356. [[CrossRef](#)]
311. Chiocca, E.A.; Yu, J.S.; Lukas, R.V.; Solomon, I.H.; Ligon, K.L.; Nakashima, H.; Triggs, D.A.; Reardon, D.A.; Wen, P.; Stopa, B.M.; et al. Regulatable interleukin-12 gene therapy in patients with recurrent high-grade glioma: Results of a phase 1 trial. *Sci. Transl. Med.* **2019**, *11*, eaaw5680. [[CrossRef](#)] [[PubMed](#)]
312. Patel, D.M.; Foreman, P.M.; Nabors, L.B.; Riley, K.O.; Gillespie, G.Y.; Markert, J.M. Design of a Phase I Clinical Trial to Evaluate M032, a Genetically Engineered HSV-1 Expressing IL-12, in Patients with Recurrent/Progressive Glioblastoma Multiforme, Anaplastic Astrocytoma, or Gliosarcoma. *Hum. Gene Ther. Clin. Dev.* **2016**, *27*, 69–78. [[CrossRef](#)]
313. Chiu, T.-L.; Peng, C.-W.; Wang, M.-J. Enhanced anti-glioblastoma activity of microglia by AAV2-mediated IL-12 through TRAIL and phagocytosis in vitro. *Oncol. Rep.* **2011**, *25*, 1373–1380. [[CrossRef](#)]
314. Chiu, T.-L.; Lin, S.-Z.; Hsieh, W.-H.; Peng, C.-W. AAV2-mediated interleukin-12 in the treatment of malignant brain tumors through activation of NK cells. *Int. J. Oncol.* **2009**, *35*, 1361–1367. [[CrossRef](#)]
315. Zhang, W.; Fulci, G.; Wakimoto, H.; Cheema, T.A.; Buhman, J.S.; Jeyaretna, D.S.; Stemmer Rachamimov, A.O.; Rabkin, S.D.; Martuza, R.L. Combination of oncolytic herpes simplex viruses armed with angiostatin and IL-12 enhances antitumor efficacy in human glioblastoma models. *Neoplasia* **2013**, *15*, 591–599. [[CrossRef](#)]

316. Vom Berg, J.; Vrohligs, M.; Haller, S.; Haimovici, A.; Kulig, P.; Sledzinska, A.; Weller, M.; Becher, B. Intratumoral IL-12 combined with CTLA-4 blockade elicits T cell-mediated glioma rejection. *J. Exp. Med.* **2013**, *210*, 2803–2811. [[CrossRef](#)] [[PubMed](#)]
317. Kasaian, M.T.; Whitters, M.J.; Carter, L.L.; Lowe, L.D.; Jussif, J.M.; Deng, B.; Johnson, K.A.; Witek, J.S.; Senices, M.; Konz, R.F.; et al. IL-21 limits NK cell responses and promotes antigen-specific T cell activation: A mediator of the transition from innate to adaptive immunity. *Immunity* **2002**, *16*, 559–569. [[CrossRef](#)]
318. Ma, H.-L.; Whitters, M.J.; Konz, R.F.; Senices, M.; Young, D.A.; Grusby, M.J.; Collins, M.; Dunussi-Joannopoulos, K. IL-21 activates both innate and adaptive immunity to generate potent antitumor responses that require perforin but are independent of IFN-gamma. *J. Immunol.* **2003**, *171*, 608–615. [[CrossRef](#)]
319. He, H.; Wisner, P.; Yang, G.; Hu, H.-M.; Haley, D.; Miller, W.; O'Hara, A.; Alvord, W.G.; Clegg, C.H.; Fox, B.A.; et al. Combined IL-21 and low-dose IL-2 therapy induces anti-tumor immunity and long-term curative effects in a murine melanoma tumor model. *J. Transl. Med.* **2006**, *4*, 24. [[CrossRef](#)] [[PubMed](#)]
320. McMichael, E.L.; Jaime-Ramirez, A.C.; Guenterberg, K.D.; Luedke, E.; Atwal, L.S.; Campbell, A.R.; Hu, Z.; Tatum, A.S.; Kondadasula, S.V.; Mo, X.; et al. IL-21 Enhances Natural Killer Cell Response to Cetuximab-Coated Pancreatic Tumor Cells. *Clin. Cancer Res.* **2017**, *23*, 489–502. [[CrossRef](#)] [[PubMed](#)]
321. Petrella, T.M.; Mihalcioiu, C.L.D.; McWhirter, E.; Belanger, K.; Savage, K.J.; Song, X.; Hamid, O.; Cheng, T.; Davis, M.L.; Lee, C.W.; et al. Final efficacy results of NCIC CTG IND.202: A randomized phase II study of recombinant interleukin-21 (rIL21) in patients with recurrent or metastatic melanoma (MM). *J. Clin. Oncol.* **2013**, *31*, 9032. [[CrossRef](#)]
322. Petrella, T.M.; Tozer, R.; Belanger, K.; Savage, K.J.; Wong, R.; Smylie, M.; Kamel-Reid, S.; Tron, V.; Chen, B.E.; Hunder, N.N.; et al. Interleukin-21 has activity in patients with metastatic melanoma: A phase II study. *J. Clin. Oncol.* **2012**, *30*, 3396–3401. [[CrossRef](#)] [[PubMed](#)]
323. Bhatia, S.; Curti, B.; Ernstoff, M.S.; Gordon, M.; Heath, E.I.; Miller, W.H.J.; Puzanov, I.; Quinn, D.I.; Flaig, T.W.; VanVeldhuizen, P.; et al. Recombinant interleukin-21 plus sorafenib for metastatic renal cell carcinoma: A phase 1/2 study. *J. Immunother. Cancer* **2014**, *2*, 2. [[CrossRef](#)]
324. Grünwald, V.; Desar, I.M.E.; Haanen, J.; Fiedler, W.; Mouritzen, U.; Olsen, M.W.B.; van Herpen, C.M.L. A phase I study of recombinant human interleukin-21 (rIL-21) in combination with sunitinib in patients with metastatic renal cell carcinoma (RCC). *Acta Oncol.* **2011**, *50*, 121–126. [[CrossRef](#)] [[PubMed](#)]
325. Timmerman, J.M.; Byrd, J.C.; Andorsky, D.J.; Yamada, R.E.; Kramer, J.; Muthusamy, N.; Hunder, N.; Pagel, J.M. A phase I dose-finding trial of recombinant interleukin-21 and rituximab in relapsed and refractory low grade B-cell lymphoproliferative disorders. *Clin. Cancer Res.* **2012**, *18*, 5752–5760. [[CrossRef](#)] [[PubMed](#)]
326. Steele, N.; Anthony, A.; Saunders, M.; Esmarck, B.; Ehrnrooth, E.; Kristjansen, P.E.G.; Nihlén, A.; Hansen, L.T.; Cassidy, J. A phase 1 trial of recombinant human IL-21 in combination with cetuximab in patients with metastatic colorectal cancer. *Br. J. Cancer* **2012**, *106*, 793–798. [[CrossRef](#)] [[PubMed](#)]
327. Daga, A.; Orengo, A.M.; Gangemi, R.M.R.; Marubbi, D.; Perera, M.; Comes, A.; Ferrini, S.; Corte, G. Glioma immunotherapy by IL-21 gene-modified cells or by recombinant IL-21 involves antibody responses. *Int. J. Cancer* **2007**, *121*, 1756–1763. [[CrossRef](#)]
328. Joalland, N.; Chauvin, C.; Oliver, L.; Vallette, F.M.; Pecqueur, C.; Jarry, U.; Scotet, E. IL-21 Increases the Reactivity of Allogeneic Human V γ 9V δ 2 T Cells Against Primary Glioblastoma Tumors. *J. Immunother.* **2018**, *41*, 224–231. [[CrossRef](#)]
329. Wölfl, M.; Merker, K.; Morbach, H.; Van Gool, S.W.; Eyrich, M.; Greenberg, P.D.; Schlegel, P.G. Primed tumor-reactive multifunctional CD62L+ human CD8+ T cells for immunotherapy. *Cancer Immunol. Immunother.* **2011**, *60*, 173–186. [[CrossRef](#)] [[PubMed](#)]
330. Fehniger, T.A.; Shah, M.H.; Turner, M.J.; VanDeusen, J.B.; Whitman, S.P.; Cooper, M.A.; Suzuki, K.; Wechsler, M.; Goodsaid, F.; Caligiuri, M.A. Differential cytokine and chemokine gene expression by human NK cells following activation with IL-18 or IL-15 in combination with IL-12: Implications for the innate immune response. *J. Immunol.* **1999**, *162*, 4511–4520.
331. Srivastava, S.; Pelloso, D.; Feng, H.; Voiles, L.; Lewis, D.; Haskova, Z.; Whitacre, M.; Trulli, S.; Chen, Y.-J.; Toso, J.; et al. Effects of interleukin-18 on natural killer cells: Costimulation of activation through Fc receptors for immunoglobulin. *Cancer Immunol. Immunother.* **2013**, *62*, 1073–1082. [[CrossRef](#)]
332. Nielsen, C.M.; Wolf, A.-S.; Goodier, M.R.; Riley, E.M. Synergy between Common γ Chain Family Cytokines and IL-18 Potentiates Innate and Adaptive Pathways of NK Cell Activation. *Front. Immunol.* **2016**, *7*, 101. [[CrossRef](#)] [[PubMed](#)]
333. Ni, J.; Miller, M.; Stojanovic, A.; Garbi, N.; Cerwenka, A. Sustained effector function of IL-12/15/18-preactivated NK cells against established tumors. *J. Exp. Med.* **2012**, *209*, 2351–2365. [[CrossRef](#)]
334. Scott, A.M.; Wolchok, J.D.; Old, L.J. Antibody therapy of cancer. *Nat. Rev. Cancer* **2012**, *12*, 278–287. [[CrossRef](#)] [[PubMed](#)]
335. Patel, D.; Lahiji, A.; Patel, S.; Franklin, M.; Jimenez, X.; Hicklin, D.J.; Kang, X. Monoclonal antibody cetuximab binds to and down-regulates constitutively activated epidermal growth factor receptor vIII on the cell surface. *Anticancer Res.* **2007**, *27*, 3355–3366.
336. Fukai, J.; Nishio, K.; Itakura, T.; Koizumi, F. Antitumor activity of cetuximab against malignant glioma cells overexpressing EGFR deletion mutant variant III. *Cancer Sci.* **2008**, *99*, 2062–2069. [[CrossRef](#)]
337. Neyns, B.; Sadones, J.; Joosens, E.; Bouttens, F.; Verbeke, L.; Baurain, J.-F.; D'Hondt, L.; Strauven, T.; Chaskis, C.; In't Veld, P.; et al. Stratified phase II trial of cetuximab in patients with recurrent high-grade glioma. *Ann. Oncol.* **2009**, *20*, 1596–1603. [[CrossRef](#)]

338. Shields, R.L.; Namenuk, A.K.; Hong, K.; Meng, Y.G.; Rae, J.; Briggs, J.; Xie, D.; Lai, J.; Stadlen, A.; Li, B.; et al. High resolution mapping of the binding site on human IgG1 for Fc gamma RI, Fc gamma RII, Fc gamma RIII, and FcRn and design of IgG1 variants with improved binding to the Fc gamma R. *J. Biol. Chem.* **2001**, *276*, 6591–6604. [[CrossRef](#)]
339. Lazar, G.A.; Dang, W.; Karki, S.; Vafa, O.; Peng, J.S.; Hyun, L.; Chan, C.; Chung, H.S.; Eivazi, A.; Yoder, S.C.; et al. Engineered antibody Fc variants with enhanced effector function. *Proc. Natl. Acad. Sci. USA* **2006**, *103*, 4005–4010. [[CrossRef](#)] [[PubMed](#)]
340. Stavenhagen, J.B.; Gorlatov, S.; Tuailon, N.; Rankin, C.T.; Li, H.; Burke, S.; Huang, L.; Vijh, S.; Johnson, S.; Bonvini, E.; et al. Fc optimization of therapeutic antibodies enhances their ability to kill tumor cells in vitro and controls tumor expansion in vivo via low-affinity activating Fc gamma receptors. *Cancer Res.* **2007**, *67*, 8882–8890. [[CrossRef](#)]
341. Umaña, P.; Jean-Mairet, J.; Moudry, R.; Amstutz, H.; Bailey, J.E. Engineered glycoforms of an antineuroblastoma IgG1 with optimized antibody-dependent cellular cytotoxic activity. *Nat. Biotechnol.* **1999**, *17*, 176–180. [[CrossRef](#)]
342. Davies, J.; Jiang, L.; Pan, L.Z.; LaBarre, M.J.; Anderson, D.; Reff, M. Expression of GnTIII in a recombinant anti-CD20 CHO production cell line: Expression of antibodies with altered glycoforms leads to an increase in ADCC through higher affinity for FC gamma RIII. *Biotechnol. Bioeng.* **2001**, *74*, 288–294. [[CrossRef](#)] [[PubMed](#)]
343. Shinkawa, T.; Nakamura, K.; Yamane, N.; Shoji-Hosaka, E.; Kanda, Y.; Sakurada, M.; Uchida, K.; Anazawa, H.; Satoh, M.; Yamasaki, M.; et al. The absence of fucose but not the presence of galactose or bisecting N-acetylglucosamine of human IgG1 complex-type oligosaccharides shows the critical role of enhancing antibody-dependent cellular cytotoxicity. *J. Biol. Chem.* **2003**, *278*, 3466–3473. [[CrossRef](#)] [[PubMed](#)]
344. Schmied, B.J.; Riegg, F.; Zekri, L.; Grosse-Hovest, L.; Bühring, H.-J.; Jung, G.; Salih, H.R. An Fc-Optimized CD133 Antibody for Induction of Natural Killer Cell Reactivity against Colorectal Cancer. *Cancers* **2019**, *11*, 789. [[CrossRef](#)] [[PubMed](#)]
345. Klisovic, R.B.; Leung, W.H.; Brugger, W.; Dirnberger-Hertweck, M.; Winderlich, M.; Ambarkhane, S.V.; Jabbour, E.J. A phase 2a, single-arm, open-label study of tafasitamab, a humanized, Fc-modified, anti-CD19 antibody, in patients with relapsed/refractory B-precursor cell acute lymphoblastic leukemia. *Cancer* **2021**, *127*, 4190–4197. [[CrossRef](#)] [[PubMed](#)]
346. Sondel, P.M.; Gillies, S.D. Current and Potential Uses of Immunocytokines as Cancer Immunotherapy. *Antibodies* **2012**, *1*, 149–171. [[CrossRef](#)]
347. Weiss, T.; Puca, E.; Silginer, M.; Hemmerle, T.; Pazahr, S.; Bink, A.; Weller, M.; Neri, D.; Roth, P. Immunocytokines are a promising immunotherapeutic approach against glioblastoma. *Sci. Transl. Med.* **2020**, *12*, eabb2311. [[CrossRef](#)] [[PubMed](#)]
348. Gauthier, L.; Morel, A.; Anceriz, N.; Rossi, B.; Blanchard-Alvarez, A.; Grondin, G.; Trichard, S.; Cesari, C.; Sapet, M.; Bosco, F.; et al. Multifunctional Natural Killer Cell Engagers Targeting Nkp46 Trigger Protective Tumor Immunity. *Cell* **2019**, *177*, 1701–1713. [[CrossRef](#)]
349. Davis, Z.B.; Vallera, D.A.; Miller, J.S.; Felices, M. Natural killer cells unleashed: Checkpoint receptor blockade and BiKE/TriKE utilization in NK-mediated anti-tumor immunotherapy. *Semin. Immunol.* **2017**, *31*, 64–75. [[CrossRef](#)] [[PubMed](#)]
350. Felices, M.; Lenvik, T.R.; Davis, Z.B.; Miller, J.S.; Vallera, D.A. Generation of BiKEs and TriKEs to Improve NK Cell-Mediated Targeting of Tumor Cells. *Methods Mol. Biol.* **2016**, *1441*, 333–346. [[CrossRef](#)]
351. Vallera, D.A.; Felices, M.; McElmurry, R.; McCullar, V.; Zhou, X.; Schmohl, J.U.; Zhang, B.; Lenvik, A.J.; Panoskaltis-Mortari, A.; Verneris, M.R.; et al. IL15 Trispecific Killer Engagers (TriKE) Make Natural Killer Cells Specific to CD33+ Targets While Also Inducing Persistence, In Vivo Expansion, and Enhanced Function. *Clin. Cancer Res.* **2016**, *22*, 3440–3450. [[CrossRef](#)] [[PubMed](#)]
352. Navin, I.; Lam, M.T.; Parihar, R. Design and Implementation of NK Cell-Based Immunotherapy to Overcome the Solid Tumor Microenvironment. *Cancers* **2020**, *12*, 3871. [[CrossRef](#)] [[PubMed](#)]
353. Moore, G.L.; Bautista, C.; Pong, E.; Nguyen, D.-H.T.; Jacinto, J.; Eivazi, A.; Muchhal, U.S.; Karki, S.; Chu, S.Y.; Lazar, G.A. A novel bispecific antibody format enables simultaneous bivalent and monovalent co-engagement of distinct target antigens. *MAbs* **2011**, *3*, 546–557. [[CrossRef](#)]
354. Holliger, P.; Hudson, P.J. Engineered antibody fragments and the rise of single domains. *Nat. Biotechnol.* **2005**, *23*, 1126–1136. [[CrossRef](#)]
355. Reiners, K.S.; Kessler, J.; Sauer, M.; Rothe, A.; Hansen, H.P.; Reusch, U.; Hucke, C.; Köhl, U.; Dürkop, H.; Engert, A.; et al. Rescue of impaired NK cell activity in hodgkin lymphoma with bispecific antibodies in vitro and in patients. *Mol. Ther.* **2013**, *21*, 895–903. [[CrossRef](#)] [[PubMed](#)]
356. Renner, C.; Hartmann, F.; Jung, W.; Deisting, C.; Juwana, M.; Pfreundschuh, M. Initiation of humoral and cellular immune responses in patients with refractory Hodgkin's disease by treatment with an anti-CD16/CD30 bispecific antibody. *Cancer Immunol. Immunother.* **2000**, *49*, 173–180. [[CrossRef](#)] [[PubMed](#)]
357. Xie, Z.; Shi, M.; Feng, J.; Yu, M.; Sun, Y.; Shen, B.; Guo, N. A trivalent anti-erbB2/anti-CD16 bispecific antibody retargeting NK cells against human breast cancer cells. *Biochem. Biophys. Res. Commun.* **2003**, *311*, 307–312. [[CrossRef](#)]
358. Shahied, L.S.; Tang, Y.; Alpaugh, R.K.; Somer, R.; Greenspon, D.; Weiner, L.M. Bispecific minibodies targeting HER2/neu and CD16 exhibit improved tumor lysis when placed in a divalent tumor antigen binding format. *J. Biol. Chem.* **2004**, *279*, 53907–53914. [[CrossRef](#)]
359. Stockmeyer, B.; Valerius, T.; Repp, R.; Heijnen, I.A.; Bühring, H.J.; Deo, Y.M.; Kalden, J.R.; Gramatzki, M.; van de Winkel, J.G. Preclinical studies with Fc(gamma)R bispecific antibodies and granulocyte colony-stimulating factor-primed neutrophils as effector cells against HER-2/neu overexpressing breast cancer. *Cancer Res.* **1997**, *57*, 696–701. [[PubMed](#)]

360. Glorius, P.; Baerenwaldt, A.; Kellner, C.; Staudinger, M.; Dechant, M.; Stauch, M.; Beurskens, F.J.; Parren, P.W.H.I.; van de Winkel, J.G.J.; Valerius, T.; et al. The novel tribody [(CD20)(2)×CD16] efficiently triggers effector cell-mediated lysis of malignant B cells. *Leukemia* **2013**, *27*, 190–201. [[CrossRef](#)] [[PubMed](#)]
361. Kellner, C.; Bruenke, J.; Horner, H.; Schubert, J.; Schwenkert, M.; Mentz, K.; Barbin, K.; Stein, C.; Peipp, M.; Stockmeyer, B.; et al. Heterodimeric bispecific antibody-derivatives against CD19 and CD16 induce effective antibody-dependent cellular cytotoxicity against B-lymphoid tumor cells. *Cancer Lett.* **2011**, *303*, 128–139. [[CrossRef](#)]
362. Bruenke, J.; Barbin, K.; Kunert, S.; Lang, P.; Pfeiffer, M.; Stieglmaier, K.; Niethammer, D.; Stockmeyer, B.; Peipp, M.; Repp, R.; et al. Effective lysis of lymphoma cells with a stabilised bispecific single-chain Fv antibody against CD19 and Fcγ₃ (CD16). *Br. J. Haematol.* **2005**, *130*, 218–228. [[CrossRef](#)] [[PubMed](#)]
363. Singer, H.; Kellner, C.; Lanig, H.; Aigner, M.; Stockmeyer, B.; Oduncu, F.; Schwemmlein, M.; Stein, C.; Mentz, K.; Mackensen, A.; et al. Effective elimination of acute myeloid leukemic cells by recombinant bispecific antibody derivatives directed against CD33 and CD16. *J. Immunother.* **2010**, *33*, 599–608. [[CrossRef](#)]
364. Kügler, M.; Stein, C.; Kellner, C.; Mentz, K.; Saul, D.; Schwenkert, M.; Schubert, I.; Singer, H.; Oduncu, F.; Stockmeyer, B.; et al. A recombinant trispecific single-chain Fv derivative directed against CD123 and CD33 mediates effective elimination of acute myeloid leukaemia cells by dual targeting. *Br. J. Haematol.* **2010**, *150*, 574–586. [[CrossRef](#)]
365. Vallera, D.A.; Zhang, B.; Gleason, M.K.; Oh, S.; Weiner, L.M.; Kaufman, D.S.; McCullar, V.; Miller, J.S.; Verneris, M.R. Heterodimeric bispecific single-chain variable-fragment antibodies against EpCAM and CD16 induce effective antibody-dependent cellular cytotoxicity against human carcinoma cells. *Cancer Biother. Radiopharm.* **2013**, *28*, 274–282. [[CrossRef](#)] [[PubMed](#)]
366. Schmohl, J.U.; Gleason, M.K.; Dougherty, P.R.; Miller, J.S.; Vallera, D.A. Heterodimeric Bispecific Single Chain Variable Fragments (scFv) Killer Engagers (BiKEs) Enhance NK-cell Activity Against CD133+ Colorectal Cancer Cells. *Target. Oncol.* **2016**, *11*, 353–361. [[CrossRef](#)]
367. Asano, R.; Nakayama, M.; Kawaguchi, H.; Kubota, T.; Nakanishi, T.; Umetsu, M.; Hayashi, H.; Katayose, Y.; Unno, M.; Kudo, T.; et al. Construction and humanization of a functional bispecific EGFR × CD16 diabody using a refolding system. *FEBS J.* **2012**, *279*, 223–233. [[CrossRef](#)] [[PubMed](#)]
368. Kuwahara, A.; Nagai, K.; Nakanishi, T.; Kumagai, I.; Asano, R. Functional Domain Order of an Anti-EGFR × Anti-CD16 Bispecific Diabody Involving NK Cell Activation. *Int. J. Mol. Sci.* **2020**, *21*, 8914. [[CrossRef](#)] [[PubMed](#)]
369. Vallera, D.A.; Ferrone, S.; Kodali, B.; Hinderlie, P.; Bendzick, L.; Ettestad, B.; Hallstrom, C.; Zorko, N.A.; Rao, A.; Fujioka, N.; et al. NK-Cell-Mediated Targeting of Various Solid Tumors Using a B7-H3 Tri-Specific Killer Engager In Vitro and In Vivo. *Cancers* **2020**, *12*, 2659. [[CrossRef](#)] [[PubMed](#)]
370. Kellner, C.; Gramatzki, M.; Peipp, M. Promoting natural killer cell functions by recombinant immunoligands mimicking an induced self phenotype. *Oncoimmunology* **2013**, *2*, e24481. [[CrossRef](#)] [[PubMed](#)]
371. Jachimowicz, R.D.; Fracasso, G.; Yazaki, P.J.; Power, B.E.; Borchmann, P.; Engert, A.; Hansen, H.P.; Reiners, K.S.; Marie, M.; von Strandmann, E.P.; et al. Induction of in vitro and in vivo NK cell cytotoxicity using high-avidity immunoligands targeting prostate-specific membrane antigen in prostate carcinoma. *Mol. Cancer Ther.* **2011**, *10*, 1036–1045. [[CrossRef](#)] [[PubMed](#)]
372. Larkin, J.; Chiarion-Sileni, V.; Gonzalez, R.; Grob, J.J.; Cowey, C.L.; Lao, C.D.; Schadendorf, D.; Dummer, R.; Smylie, M.; Rutkowski, P.; et al. Combined Nivolumab and Ipilimumab or Monotherapy in Untreated Melanoma. *N. Engl. J. Med.* **2015**, *373*, 23–34. [[CrossRef](#)]
373. Xu, X.; Huang, Z.; Zheng, L.; Fan, Y. The efficacy and safety of anti-PD-1/PD-L1 antibodies combined with chemotherapy or CTLA4 antibody as a first-line treatment for advanced lung cancer. *Int. J. Cancer* **2018**, *142*, 2344–2354. [[CrossRef](#)]
374. Omuro, A.; Vlahovic, G.; Lim, M.; Sahebjam, S.; Baehring, J.; Cloughesy, T.; Voloschin, A.; Ramkissoon, S.H.; Ligon, K.L.; Latek, R.; et al. Nivolumab with or without ipilimumab in patients with recurrent glioblastoma: Results from exploratory phase I cohorts of CheckMate 143. *Neuro-Oncol.* **2018**, *20*, 674–686. [[CrossRef](#)]
375. Reardon, D.A.; Brandes, A.A.; Omuro, A.; Mulholland, P.; Lim, M.; Wick, A.; Baehring, J.; Ahluwalia, M.S.; Roth, P.; Bähr, O.; et al. Effect of Nivolumab vs Bevacizumab in Patients with Recurrent Glioblastoma: The CheckMate 143 Phase 3 Randomized Clinical Trial. *JAMA Oncol.* **2020**, *6*, 1003–1010. [[CrossRef](#)]
376. Shevtsov, M.; Pitkin, E.; Ischenko, A.; Stangl, S.; Khachatryan, W.; Galibin, O.; Edmond, S.; Lobinger, D.; Multhoff, G. Ex vivo Hsp70-Activated NK Cells in Combination with PD-1 Inhibition Significantly Increase Overall Survival in Preclinical Models of Glioblastoma and Lung Cancer. *Front. Immunol.* **2019**, *10*, 454. [[CrossRef](#)] [[PubMed](#)]
377. André, P.; Denis, C.; Soulas, C.; Bourbon-Caillet, C.; Lopez, J.; Arnoux, T.; Bléry, M.; Bonnafous, C.; Gauthier, L.; Morel, A.; et al. Anti-NKG2A mAb Is a Checkpoint Inhibitor that Promotes Anti-tumor Immunity by Unleashing Both T and NK Cells. *Cell* **2018**, *175*, 1731–1743.e13. [[CrossRef](#)] [[PubMed](#)]
378. Romagné, F.; André, P.; Spee, P.; Zahn, S.; Anfossi, N.; Gauthier, L.; Capanni, M.; Ruggeri, L.; Benson, D.M., Jr.; Blaser, B.W.; et al. Preclinical characterization of 1-7F9, a novel human anti-KIR receptor therapeutic antibody that augments natural killer-mediated killing of tumor cells. *Blood* **2009**, *114*, 2667–2677. [[CrossRef](#)] [[PubMed](#)]
379. Benson, D.M., Jr.; Hofmeister, C.C.; Padmanabhan, S.; Suvannasankha, A.; Jagannath, S.; Abonour, R.; Bakan, C.; Andre, P.; Efebera, Y.; Tiollier, J.; et al. A phase 1 trial of the anti-KIR antibody IPH2101 in patients with relapsed/refractory multiple myeloma. *Blood* **2012**, *120*, 4324–4333. [[CrossRef](#)] [[PubMed](#)]
380. Rupp, L.J.; Schumann, K.; Roybal, K.T.; Gate, R.E.; Ye, C.J.; Lim, W.A.; Marson, A. CRISPR/Cas9-mediated PD-1 disruption enhances anti-tumor efficacy of human chimeric antigen receptor T cells. *Sci. Rep.* **2017**, *7*, 737. [[CrossRef](#)] [[PubMed](#)]

381. Zhang, C.; Peng, Y.; Hublitz, P.; Zhang, H.; Dong, T. Genetic abrogation of immune checkpoints in antigen-specific cytotoxic T-lymphocyte as a potential alternative to blockade immunotherapy. *Sci. Rep.* **2018**, *8*, 5549. [[CrossRef](#)] [[PubMed](#)]
382. Su, S.; Hu, B.; Shao, J.; Shen, B.; Du, J.; Du, Y.; Zhou, J.; Yu, L.; Zhang, L.; Chen, F.; et al. CRISPR-Cas9 mediated efficient PD-1 disruption on human primary T cells from cancer patients. *Sci. Rep.* **2016**, *6*, 20070. [[CrossRef](#)]
383. Lu, Y.; Xue, J.; Deng, T.; Zhou, X.; Yu, K.; Deng, L.; Huang, M.; Yi, X.; Liang, M.; Wang, Y.; et al. Safety and feasibility of CRISPR-edited T cells in patients with refractory non-small-cell lung cancer. *Nat. Med.* **2020**, *26*, 732–740. [[CrossRef](#)] [[PubMed](#)]
384. Stadtmauer, E.A.; Fraietta, J.A.; Davis, M.M.; Cohen, A.D.; Weber, K.L.; Lancaster, E.; Mangan, P.A.; Kulikovskaya, I.; Gupta, M.; Chen, F.; et al. CRISPR-engineered T cells in patients with refractory cancer. *Science* **2020**, *367*. [[CrossRef](#)] [[PubMed](#)]
385. Huang, R.-S.; Lai, M.-C.; Shih, H.-A.; Lin, S. A robust platform for expansion and genome editing of primary human natural killer cells. *J. Exp. Med.* **2021**, *218*, e20201529. [[CrossRef](#)] [[PubMed](#)]
386. Morimoto, T.; Nakazawa, T.; Matsuda, R.; Nishimura, F.; Nakamura, M.; Yamada, S.; Nakagawa, I.; Park, Y.-S.; Tsujimura, T.; Nakase, H. CRISPR-Cas9-Mediated TIM3 Knockout in Human Natural Killer Cells Enhances Growth Inhibitory Effects on Human Glioma Cells. *Int. J. Mol. Sci.* **2021**, *22*, 3489. [[CrossRef](#)]
387. Guo, X.; Mahlaköiv, T.; Ye, Q.; Somanchi, S.; He, S.; Rana, H.; DiFiglia, A.; Gleason, J.; van der Touw, W.; Hariri, R.; et al. CBLB ablation with CRISPR/Cas9 enhances cytotoxicity of human placental stem cell-derived NK cells for cancer immunotherapy. *J. Immunother. Cancer* **2021**, *9*, e001975. [[CrossRef](#)]
388. Pomeroy, E.J.; Hunzeker, J.T.; Kluesner, M.G.; Lahr, W.S.; Smeester, B.A.; Crosby, M.R.; Lonetree, C.; Yamamoto, K.; Bendzick, L.; Miller, J.S.; et al. A Genetically Engineered Primary Human Natural Killer Cell Platform for Cancer Immunotherapy. *Mol. Ther.* **2020**, *28*, 52–63. [[CrossRef](#)]
389. Delconte, R.B.; Kolesnik, T.B.; Dagley, L.F.; Rautela, J.; Shi, W.; Putz, E.M.; Stannard, K.; Zhang, J.-G.; Teh, C.; Firth, M.; et al. CIS is a potent checkpoint in NK cell-mediated tumor immunity. *Nat. Immunol.* **2016**, *17*, 816–824. [[CrossRef](#)] [[PubMed](#)]
390. Rautela, J.; Surgenor, E.; Huntington, N.D. Efficient genome editing of human natural killer cells by CRISPR RNP. *bioRxiv* **2018**, 406934. [[CrossRef](#)]
391. Sutlu, T.; Nyström, S.; Gilljam, M.; Stellan, B.; Applequist, S.E.; Alici, E. Inhibition of intracellular antiviral defense mechanisms augments lentiviral transduction of human natural killer cells: Implications for gene therapy. *Hum. Gene Ther.* **2012**, *23*, 1090–1100. [[CrossRef](#)] [[PubMed](#)]
392. Rautela, J.; Surgenor, E.; Huntington, N.D. Drug target validation in primary human natural killer cells using CRISPR RNP. *J. Leukoc. Biol.* **2020**, *108*, 1397–1408. [[CrossRef](#)]
393. Raedler, L. Velcade (Bortezomib) Receives 2 New FDA Indications: For Retreatment of Patients with Multiple Myeloma and for First-Line Treatment of Patients with Mantle-Cell Lymphoma. *Am. Health Drug Benefits* **2015**, *8*, 135–140. [[PubMed](#)]
394. Luna, J.I.; Grossenbacher, S.K.; Sturgill, I.R.; Ames, E.; Judge, S.J.; Bouzid, L.A.; Darrow, M.A.; Murphy, W.J.; Canter, R.J. Bortezomib Augments Natural Killer Cell Targeting of Stem-Like Tumor Cells. *Cancers* **2019**, *11*, 85. [[CrossRef](#)] [[PubMed](#)]
395. Höring, E.; Podlech, O.; Silkenstedt, B.; Rota, I.A.; Adamopoulou, E.; Naumann, U. The Histone Deacetylase Inhibitor Trichostatin A Promotes Apoptosis and Antitumor Immunity in Glioblastoma Cells. *Anticancer Res.* **2013**, *33*, 1351–1360. [[PubMed](#)]
396. Chitadze, G.; Lettau, M.; Luecke, S.; Wang, T.; Janssen, O.; Fürst, D.; Mytilineos, J.; Wesch, D.; Oberg, H.-H.; Held-Feindt, J.; et al. NKG2D- and T-cell receptor-dependent lysis of malignant glioma cell lines by human $\gamma\delta$ T cells: Modulation by temozolomide and A disintegrin and metalloproteases 10 and 17 inhibitors. *Oncoimmunology* **2016**, *5*, e1093276. [[CrossRef](#)] [[PubMed](#)]