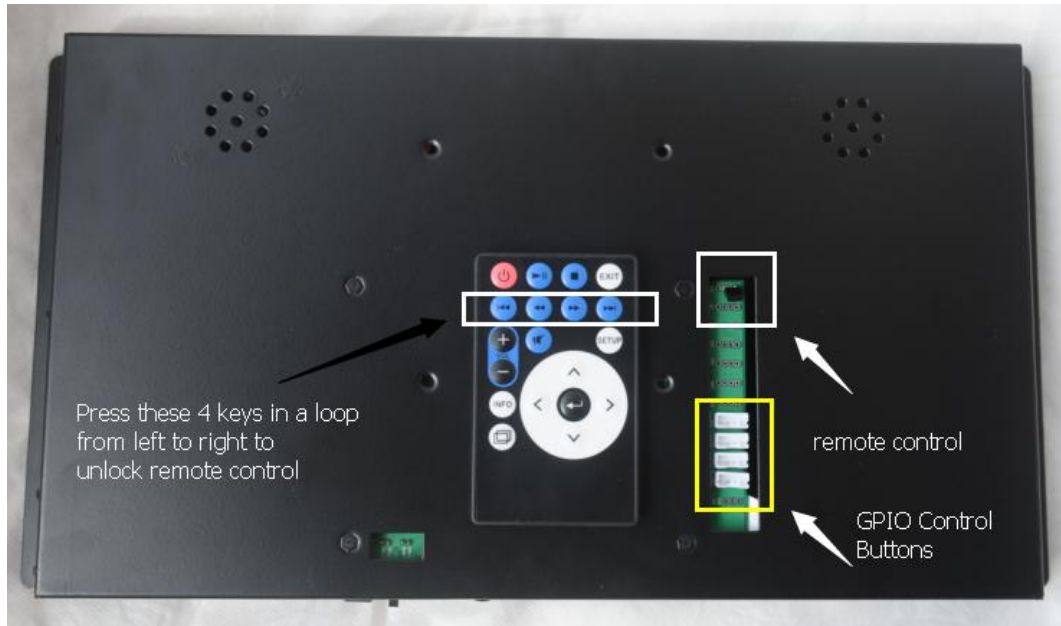


Framed and Open Frame Ad Player Testing Guide

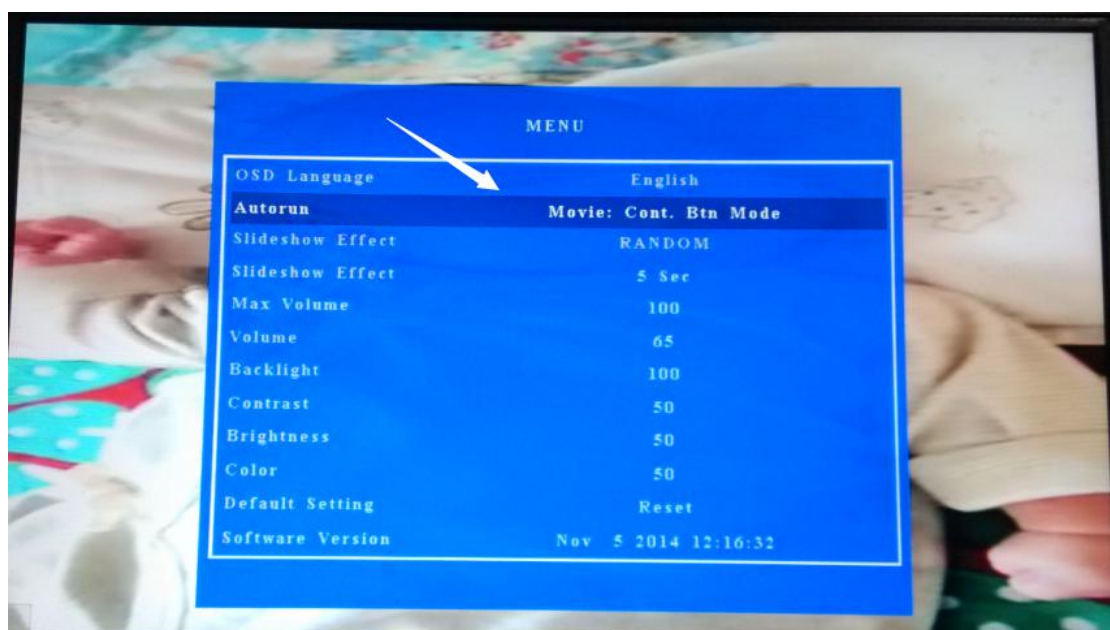


First You Need to *Unlock Remote Control*

The remote control is locked by default for anti-tampering, to unlock the remote control for settings set-up, please press the 4 buttons on the remote controller once in a loop (2nd row), then the remote control is unlocked automatically. Press Setup to go to Setting Page as the following:

Use up/down to switch between items, and use left/right to change the options under the selected item. Use exit to save the settings.

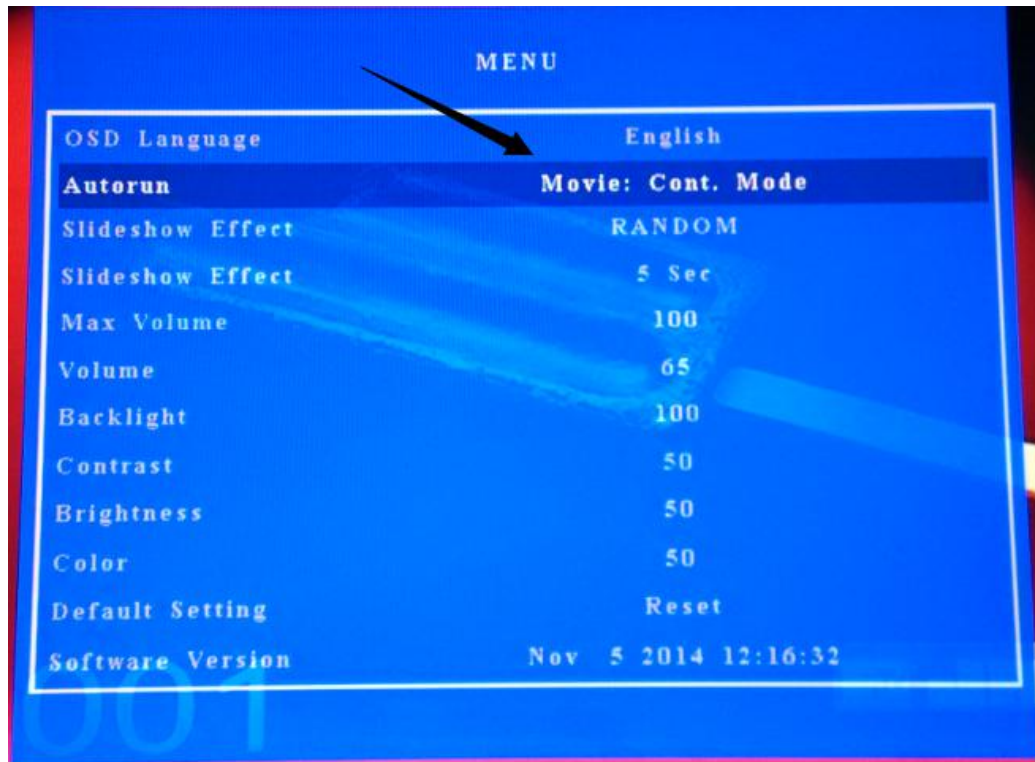
Mode A: Movie Loop Button Mode



In this mode, the unit will power on to loop the default video named mu.avi, and the movies 00.avi, 01.avi, 02.avi, 03.avi could be activated via push buttons which are connected to the GPIO controls labeled LED00, LED01, LED02, LED03.

When you press the LED00, the push button will be illuminated to indicate the playback of 00.avi for once, and then go back to playback mu.avi in repeat mode.

Mode B: Movie Continuous



In this mode, the unit will playback any movie in the root of SD card / USB drive in a loop.