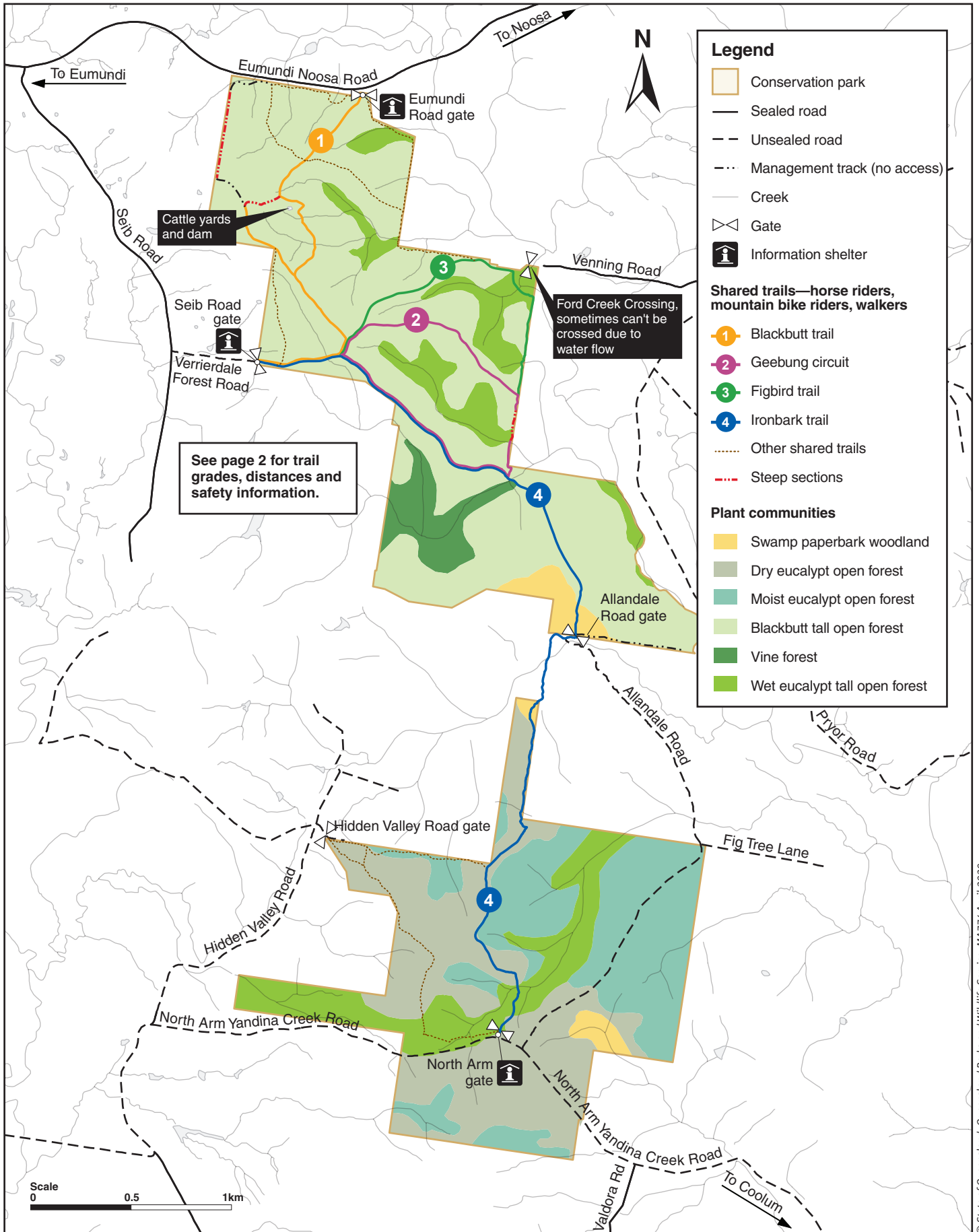


Eumundi Conservation Park trail information and map



Eumundi Conservation Park trail information and map

Page 2/2

Trail information

The majority of trails are forest road-width and shared by walkers, mountain bike riders and horseriders.



- Be considerate and slow down when approaching other users.
- Bike riders alert other trail users when approaching.

Use trail classifications to choose trails that suit your group's ability and fitness.



Easy—wide trail, natural surface, gentle gradient, some obstacles. For novice horseriders and experienced horses with basic skills and fitness. For beginner mountain bikers with basic mountain bike skills. No bushwalking experience required.



Intermediate—wide trail, natural surface, moderate slope, some obstacles. Some trails include short steep sections—see map for details. For experienced horseriders and horses with moderate skills and fitness. For skilled mountain bikers. Some bushwalking experience recommended.



1 **Blackbutt trail (Intermediate)**

2.3km one-way from Eumundi Road gate to Seib Road gate entrance (via cattle yard)



2 **Geebung circuit (Intermediate)**

From Seib Road gate entrance: 3.6km return circuit

From Eumundi Road gate entrance: 6.1km return circuit

From North Arm gate entrance: 9.3km return circuit



3 **Figbird trail (Easy)**

From Seib Road gate entrance: 4km return

From Eumundi Road gate entrance: 6.1km return via Blackbutt and Geebung circuits (Intermediate grade trails)

From North Arm gate entrance: 10.1km return



4 **Ironbark trail (Easy)** (includes a 500m link track on Sunshine Coast Council land)

From Seib Road gate to North Arm gate: 5.1km one-way

From Eumundi gate via the Blackbutt trail and then the Ironbark trail to North Arm gate: 6.6km one-way

Take care

- Wear suitable shoes, sunscreen, a hat and long-sleeved shirt.
- Carry enough drinking water.
- Carry a mobile phone.
- Carry a first-aid kit and know how to use it.
- Stay on the track and obey all safety and warning signs.
- Do not walk or ride alone. Explore in daylight hours only.
- Wear adequate sun and insect protection.
- Plan ahead—let a responsible person know where you are going and when you expect to return.

Ride safely

- Always wear a helmet.
- Plan ahead, ride within your ability and according to trail conditions.
- Avoid riding in large groups—keep groups to fewer than 12.
- Avoid riding during and after rain when trails are soft, wet and muddy.
- Bike riders avoid skidding and sliding around turns—this damages trails and may result in collision with other trail users and injury.

In an emergency

In an emergency call Triple Zero (000).

For further information and to check Park Alert closure information visit

<https://parks.des.qld.gov.au/parks/eumundi-conservation-park>



Queensland
Government