

X
X
X
X
X
X
X
X
X
X
X
X
X
X



BOUSSOLE



FREE PATTERN

X X





BOUSSOLE

QUILT DESIGNED BY MAUREEN CRACKNELL

ENCHANTED VOYAGE

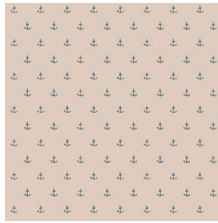
FABRICS DESIGNED BY MAUREEN CRACKNELL



NORTH WATERS



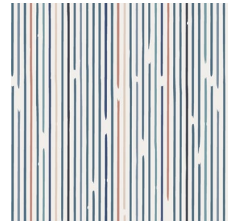
ENV-61780
UNDERWATER ENCHANT SOLAR



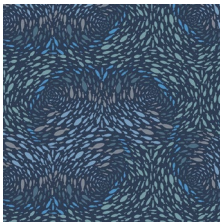
ENV-61781
NAUTIQUE SPELL SAND



ENV-61782
SEAHORSE MAGIC DEEP



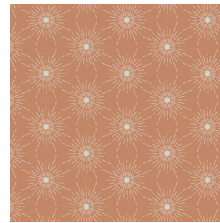
ENV-61783
HIGH TIDE DAY



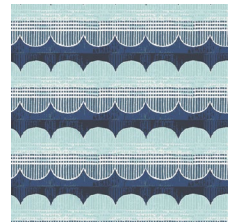
ENV-61784
SALTWATER STREAM DIM



ENV-61785
OFFSHORE DREAM SHADOW



ENV-61786
NORTH STAR SHINE

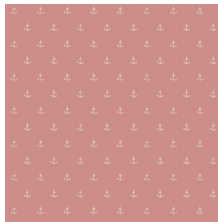


ENV-61787
WINWARD REFLECTION

SOUTH WATERS



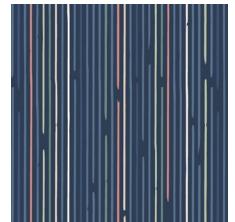
ENV-71780
UNDERWATER ENCHANT LUNAR



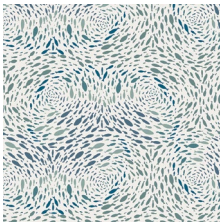
ENV-71781
NAUTIQUE SPELL BLUSH



ENV-71782
SEAHORSE MAGIC SHALLOW



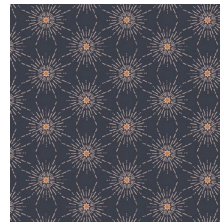
ENV-71783
HIGH TIDE NIGHT



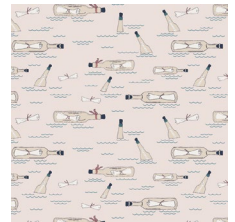
ENV-71784
SALTWATER STREAM CLEAR



ENV-71785
OFFSHORE DREAM BREEZE



ENV-71786
NORTH STAR GLOOM



ENV-71788
OCEAN NOTES





BOUSSOLE

FINISHED SIZE | 72" x 72"

FABRIC REQUIREMENTS

Block 1

Fabric A	ENV-61784	¼ yd.
Fabric B	ENV-71784	¼ yd.
Fabric C	PE-498	⅓ yd.

Block 2

Fabric A	ENV-71781	¼ yd.
Fabric B	PE-471	¼ yd.
Fabric C	ENV-61786	⅓ yd.

Block 3

Fabric A	ENV-71788	¼ yd.
Fabric B	ENV-71786	¼ yd.
Fabric C	PE-472	⅓ yd.

Block 4

Fabric A	ENV-61783	¼ yd.
Fabric B	ENV-61785	¼ yd.
Fabric C	PE-442	⅓ yd.

CUTTING DIRECTIONS

¼" seam allowances are included.
WOF means width of fabric.

- One (1) 3½" square from fabric A.
- Four (4) Template 1 from fabric A.
- Eight (8) 1⅝" squares from fabric A, Sub-cut diagonally.
- Two (2) 2" x 3 ½" rectangles from fabric B.
- Two (2) 2" x 6 ½" rectangles from fabric B.
- Four (4) 2 ½" x 6 ½" rectangles from fabric B.
- Eight (8) 1" x 1½" strips from fabric B.
- Eight (8) 1" x 2½" strips from fabric B.
- Four (4) 1 ½" squares from fabric C.
- Two (2) 3⅝" squares from fabric C, Sub-cut diagonally.

CONSTRUCTION

Sew all rights sides together with ¼" seam allowance.

- Start with the construction of the Center square.
- To accomplish the CS construction take the 3½" square from fabric A, two 2" x 3 ½" rectangles from fabric B, two (2) 2" x 6 ½" rectangles from fabric B and the four half squares from fabric C.
- Attach the two 2" x 3 ½" rectangles from fabric B on the top and bottom edge of the 3½" square from fabric A.
- Press open as you go.
- Take the two (2) 2" x 6 ½" rectangles from fabric B and attach them to the left and right sides of the fabric A square.
- Press open.

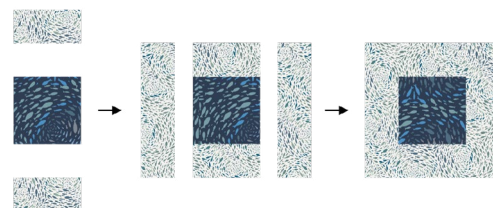


DIAGRAM 1

- Now bring the four half squares from fabric C and place them on top of the previous made piece, fabrics facing right side of fabrics.
- Sew on top and trim excess fabric.
- Press Open.
- Set aside.

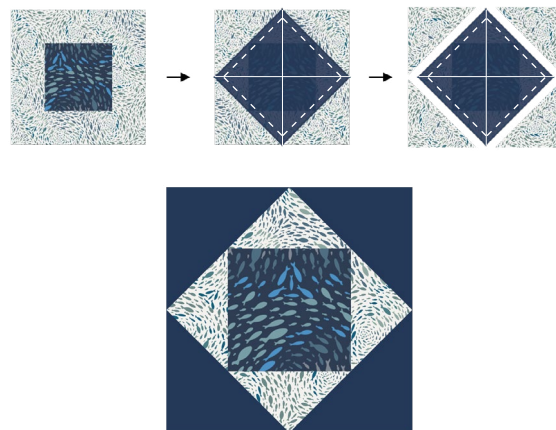


DIAGRAM 2

- Now, construct the Corner Squares.
- Take one $1\frac{1}{2}$ " squares from fabric C, two $1" \times 1\frac{1}{2}"$ strips from fabric B and two $1" \times 2\frac{1}{2}"$ strips from fabric B.
- Repeat the steps you did for the Center Square.
- You need a total of four.
- Set aside.

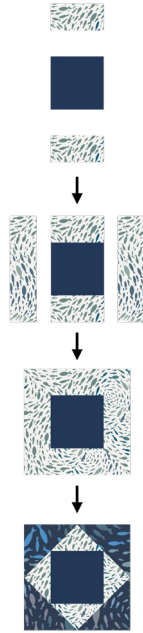


DIAGRAM 3

- Now, we are doing some applique.
- Take one $2\frac{1}{2}" \times 6\frac{1}{2}"$ rectangle from fabric B and one Template 1 from fabric A.
- Using Steam-A-Seam applique the Template on top of the rectangle.
- Stitch around the Template to hold it on place.
- You need a total of four.

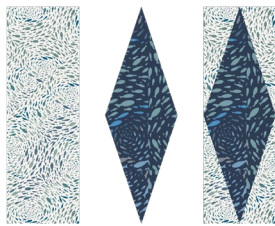


DIAGRAM 4

- x
- Bring all the pieces and arrangement as the Diagram below.



DIAGRAM 5

- Attach them by rows.



DIAGRAM 6

- Attach the rows together.
- Voila!



DIAGRAM 7



artgalleryfabrics.com

NOTE: While all possible care has been taken to ensure the accuracy of this pattern, We are not responsible for printing errors or the way in which individual work varies. Please read instructions carefully before starting the construction of this quilt. If desired, wash and iron your fabrics before starting to cut.

© 2019 Courtesy of Art Gallery Quilts LLC. All Rights Reserved.

