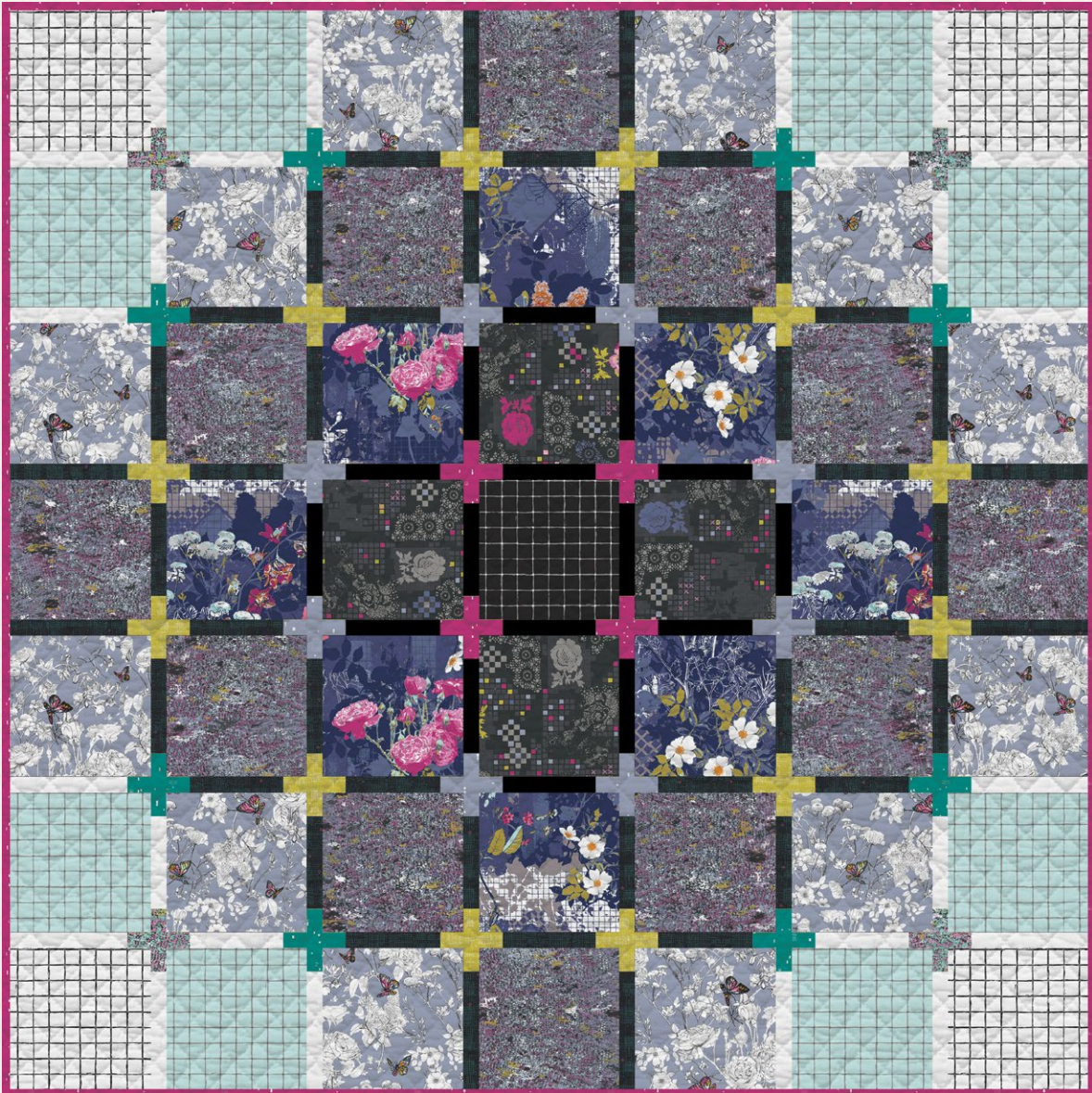


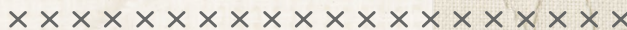
featuring GRID COLLECTION BY KATARINA ROCCELLA



megapixel

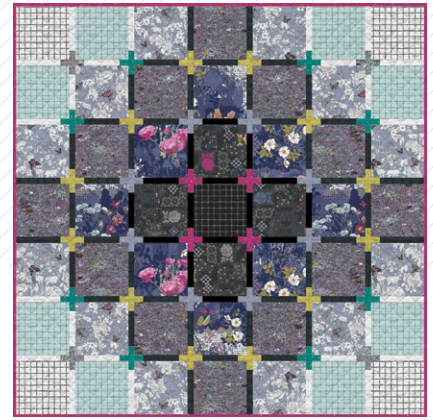


FREE PATTERN



megapixel *Katarina Roccella*

QUILT DESIGNED BY KATARINA ROCCELLA

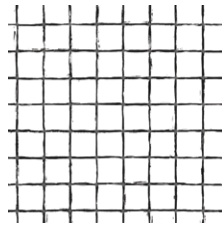


FABRICS DESIGNED BY KATARINA ROCCELLA

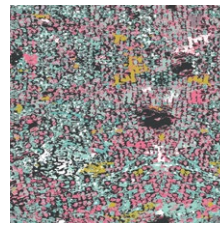
ULTRA MIST



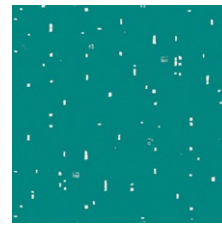
GRI-50400
PIXELFLY EDEN AQUA



GRI-50401
GRID POSITIVE



GRI-50402
WING MAGNIFIED CELESTE



GRI-50403
IRREGULARITY JADE



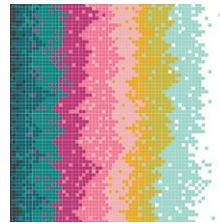
GRI-50404
FRAMEWORK ALBARISE



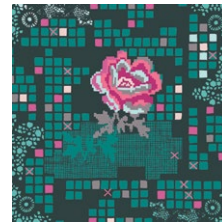
GRI-50405
EVANESCENCE BLACKOUT



GRI-50407
VITRINE GEMS



GRI-50408
LIGHTWAVE IGNITE



GRI-50409
ROSE CIRCUIT TEA

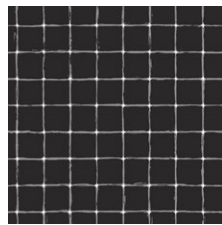


GRI-50411
IRREGULARITY MAGENTA

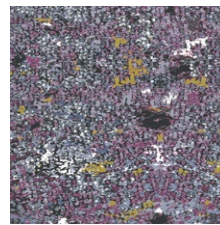
ULTRA VIOLET



GRI-40400
PIXELFLY EDEN LILAC



GRI-40401
GRID NEGATIVE



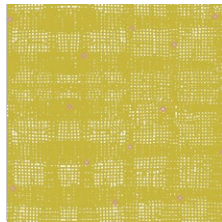
GRI-40402
WING MAGNIFIED MAUVE



GRI-40403
IRREGULARITY CINDER



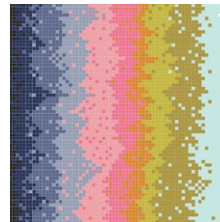
GRI-40404
FRAMEWORK VIOLET



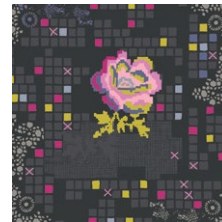
GRI-40405
EVANESCENCE FLASH



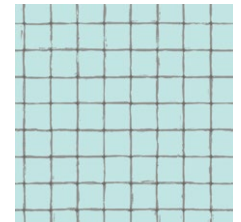
GRI-40406
PETALBIT TRELLIS AQUA



GRI-40408
LIGHTWAVE DAMPEN



GRI-40409
ROSE CIRCUIT JET



GRI-40410
GRID STATIC



megapixel

FINISHED SIZE | 72½" x 72½"

FABRIC REQUIREMENTS

Fabric A	GRI-40401	F8
Fabric B	GRI-40409	⅓ yd.
Fabric C	GRI-40404	⅝ yd.
Fabric D	GRI-40402	1 yd.
Fabric E	GRI-40400	1 yd.
Fabric F	GRI-40410	⅝ yd.
Fabric G	GRI-50401	⅓ yd.
Fabric H	GRI-50402	⅛ yd.
Fabric I	GRI-50403	⅛ yd.
Fabric J	GRI-40403	⅛ yd.
Fabric K	GRI-40405	¼ yd.
Fabric L	GRI-50411	½ yd.
Fabric M	GRI-50405	½ yd.
Fabric N	PE-433	¼ yd.
Fabric O	PE-413	⅛ yd.

BACKING FABRIC

GRI-40408 5 ¾ yds. *(Suggested)*

BINDING FABRIC

GRI-50411 (Fabric **L**) *(Included)*

CUTTING DIRECTIONS

¼" seam allowances are included.
WOF means width of fabric.

- One (1) 10" x 10" squares from fabric **A**.
- Four (4) 10" x 10" squares from fabric **B** and **G**.
- Eight (8) 10" x 10" squares from fabric **C** and **F**.
- Twelve (12) 10" x 10" squares from fabrics **D** and **E**.
- Eight (8) 2½" x 1½" rectangles from fabrics **H** and **L**.
- Four (4) 5½" x 1½" rectangles from fabrics **H** and **L**.

- Sixteen (16) 2½" x 1½" rectangles from fabrics **I** and **J**.
- Eight (8) 5½" x 1½" rectangles from fabrics **I** and **J**.
- Twenty four (24) 2½" x 1½" rectangles from fabric **K**.
- Twelve (12) 5½" x 1½" rectangles from fabric **K**.
- Thirty six (36) 6" x 1½" rectangles fabric **M**.
- Eight (8) 8" x 1½" rectangles from fabric **M**.
- Eight (8) 6" x 1½" rectangles from fabric **N**.
- Sixteen (16) 8" x 1½" rectangles from fabric **N**.
- Sixteen (16) 6" x 1½" rectangles from fabric **O**.

CONSTRUCTION

Sew all rights sides together with ¼" seam allowance.

- Take four (4) 8" x 1½" rectangles from fabric **M**, eight (8) 8" x 1½" rectangles from fabric **N** and four (4) 2½" x 1½" rectangles from fabrics **H**, **I** and **K**.
- Join them into strip sets following Diagram 1.



DIAGRAM 1

- Take eighteen (18) 6" x 1½" rectangles from fabric **M**, twenty (20) 2½" x 1½" rectangles from fabric **K**, eight (8) 2½" x 1½" rectangles from fabric **J**, twelve (12) 2½" x 1½" rectangles from fabric **I**, four (4) 2½" x 1½" rectangles from fabric **H**, and four (4) 6" x 1½" rectangles from fabric **N**.
- Join them into strip sets following Diagram 2.

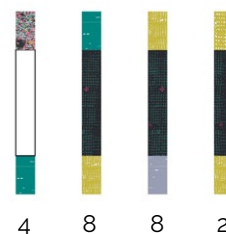


DIAGRAM 2

- Take eight (8) 6" x 1½" rectangles from fabric O, and eight (8) 2½" x 1½" rectangles from fabrics L and J.
- Join them into strip sets following Diagram 3.



DIAGRAM 3

- Take eight (8) 6" x 1½" rectangles from fabric O, and eight (8) 2½" x 1½" rectangles from fabrics L and J.
- Take the left over rectangles and join them in the following rows, making sure the first and the last rectangle of each row measures 8" x 1½".
- Row a x 2:
- **N>H>N>I>M>K>M>K>M>I>N>H>N**
- Row b x 2:
- **N>I>M>K>M>J>O>J>M>K>M>I>N**
- Row c x 2:
- **M>K>M>J>O>L>O>L>O>J>M>K>M**



DIAGRAM 4

- Take eight the 10" x 10" squares and the strip sets and join them into rows following Diagram 5.

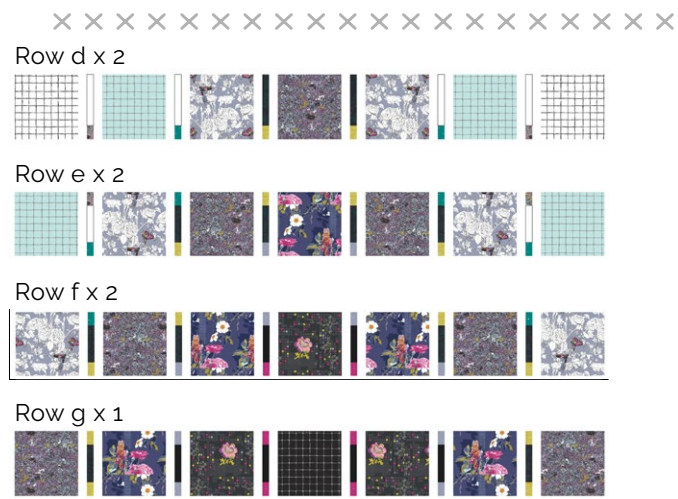


DIAGRAM 5

ASSEMBLING THE TOP

Sew all rights sides together with ¼" seam allowance. Press open.

- Join all the rows as follows:
- d>a>e>b>f>c>g>c>f>b>e>a>d

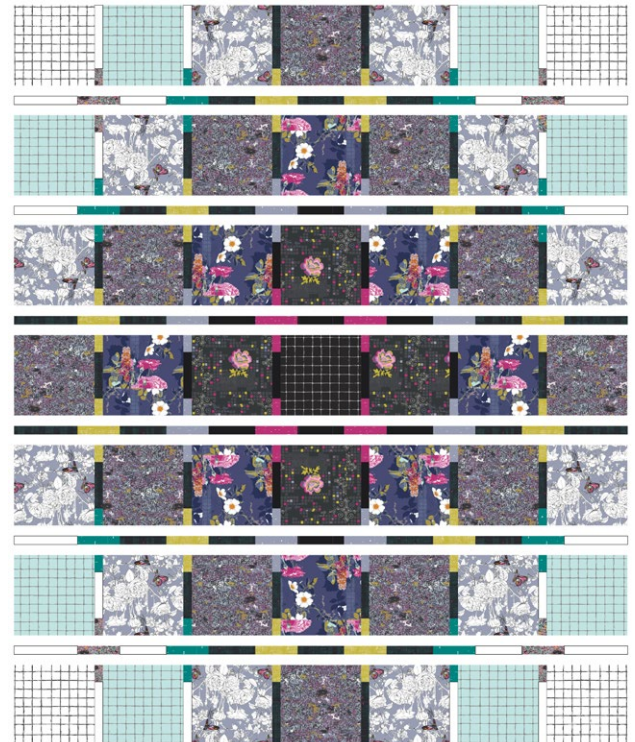


DIAGRAM 6

QUILT ASSEMBLY

Sew rights sides together.

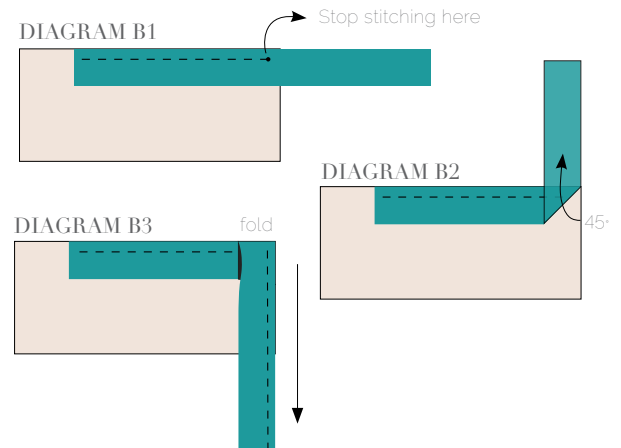
- Place BACKING FABRIC on a large surface wrong side up. Stretch it with masking tape against that surface.
- Place BATTING on top of backing fabric.
- Place TOP on top of the batting with right side facing up. Smooth away wrinkles using your hands.
- Pin all layers together and baste with basting thread, using long stitches. You can also use safety pins to join the layers.
- Machine or hand quilt starting at the center and working towards the corners. Remember that quilting motifs are a matter of personal preference. Have fun choosing yours!
- After you finished, trim excess of any fabric or batting, squaring the quilt to proceed to bind it.

BINDING

Sew rights sides together.

- Cut enough strips $1\frac{1}{2}$ " wide by the width of the fabric L to make a final strip 300" long. Start sewing the binding strip in the middle of one of the sides of the quilt, placing the strip right side down and leaving an approximated 5" tail. Sew with $\frac{1}{4}$ " seam allowance (using straight stitch), aligning the strip's raw edge with the quilt top's raw edge.
- Stop stitching $\frac{1}{4}$ " before the edge of the quilt (DIAGRAM B 1). Clip the threads. Remove the quilt from under the machine presser foot. Fold the strip in a motion of 45° and upward, pressing with your fingers (DIAGRAM B2). Hold this fold with your finger, bring the strip down in line with the next edge, making a horizontal fold that aligns with the top edge of the quilt (DIAGRAM B3). Start sewing at $\frac{1}{4}$ " of the border, stitching all the layers. Do the same in the four corners of the quilt.

- Stop stitching before you reach the last 5 or 6 inches. Cut the threads and remove the quilt from under the machine presser foot. Lay the loose ends of the binding flat along the quilt edge, folding the ends back on themselves where they meet. Press them together to form a crease. Using this crease as the stitching line, sew the two open ends of the binding with right sides together (you can help yourself marking with a pencil if the crease is difficult to see).
- Trim seam to $\frac{1}{4}$ " and press open. Complete the sewing. Turn binding to back of the quilt, turn raw edge inside and stitch by hand using blind stitch.



artgalleryfabrics.com

NOTE: While all possible care has been taken to ensure the accuracy of this pattern, We are not responsible for printing errors or the way in which individual work varies. Please read instructions carefully before starting the construction of this quilt. If desired, wash and iron your fabrics before starting to cut.

© 2018 Courtesy of Art Gallery Quilts LLC. All Rights Reserved.