



day night



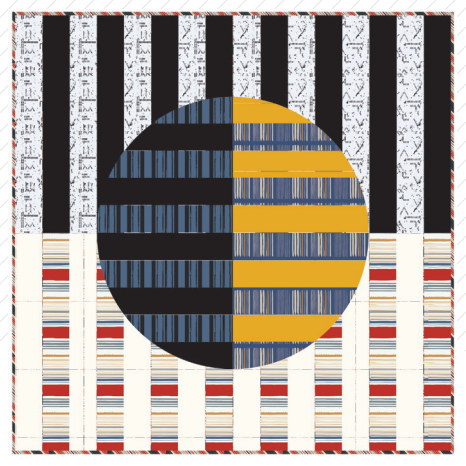
capsules
by AGF

FREE PATTERN



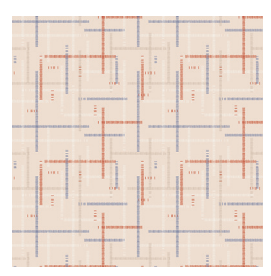
day night

QUILT DESIGNED BY AGF STUDIO *AGFstudio*



ALIGNED

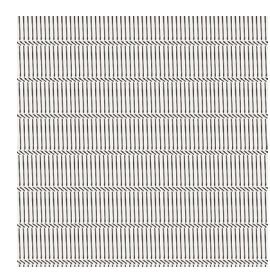
FABRICS DESIGNED BY AGF STUDIO



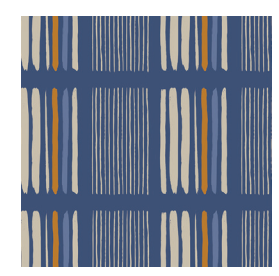
CAP-A-7000
INTERCONNECTED



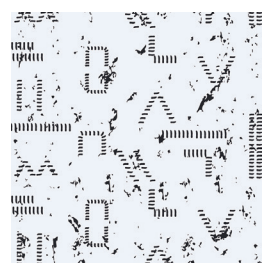
CAP-A-7001
SLANTED



CAP-A-7002
HYPHENATED



CAP-A-7003
LINEUP



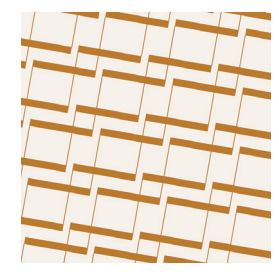
CAP-A-7004
DIVIDED



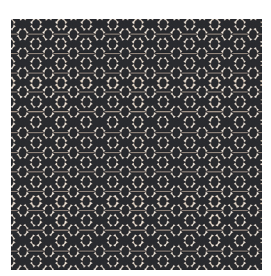
CAP-A-7005
ON LINES



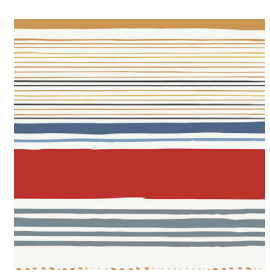
CAP-A-7006
PARALLEL



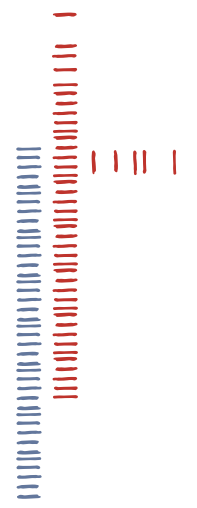
CAP-A-7007
LINKED



CAP-A-7008
DASH-ING



CAP-A-7009
LINE STUDY



day night

FINISHED SIZE | 64" x 64"

FABRIC REQUIREMENTS

Fabric A	CAP-A-7004	1 yd.
Fabric B	CAP-A-7009	1 yd.
Fabric C	CAP-A-7003	½ yd.
Fabric D	CAP-A-7006	½ yd.
Fabric E	PE-413	1½ yd.
Fabric F	PE-459	½ yd.
Fabric G	PE-433	1 yd.
Fabric H	CAP-A-7001	⅓ yd.

BACKING FABRIC

CAP-A-7008 5 yds. (*Suggested*)

BINDING FABRIC

CAP-A-7001 (Fabric **H**) (*included*)

CUTTING DIRECTIONS

¼" seam allowances are included.
WOF means width of fabric.

Eight (8) 32 1/2" x 4 1/2" strips from fabrics **A**, **E**, and **G**.

Three (6) 21" x 4 1/2" strips from fabrics **C**, **D**, **E** and **F**.

Eight (8) 4 1/2" x 32 1/2" strips from fabric **B** (make sure you cut the strips parallel to the selvage).

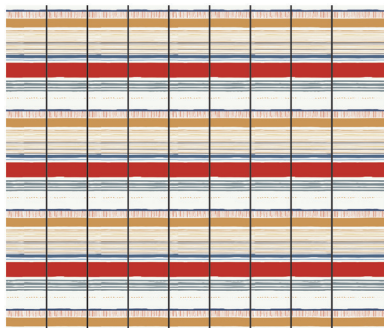


DIAGRAM 1

CONSTRUCTION

Sew all rights sides together with ¼" seam allowance.

- Make the following strip sets:

Strip Set A

- Take four (4) 32 1/2" x 4 1/2" strips from fabrics **A** and **E**
- Join them:
- **A - E - A - E - A - E - A - E** (make 2)

Strip Set B

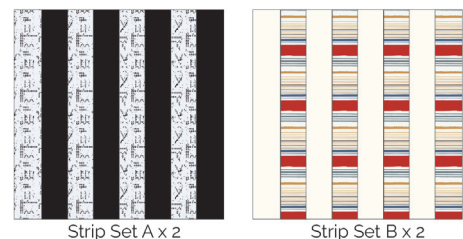
- Take four (4) 32 1/2" x 4 1/2" strips from fabrics **B** and **G**
- Join them making sure the stripes from fabric **B** match:
- **B - G - B - G - B - G - B - G** (make 2)

Strip set C

- Take three (3) 21" x 4 1/2" strips from fabrics **D** and **E**
- Join them making sure the stripes from fabric **D** match:
- **D - E - D - E - D - E** (make 2)

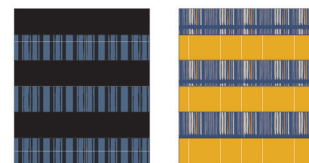
Strip set D

- Take three (3) 21" x 4 1/2" strips from fabrics **C** and **F**.
- Join them: making sure the stripes from fabric **C** match:
- **C - F - C - F - C - F** (make 2)



Strip Set A x 2

Strip Set B x 2



Strip Set C x 2

Strip Set D x 2

DIAGRAM 2

- Use template **a** to trim strip sets **A** and **B** as shown in the Diagram 3.

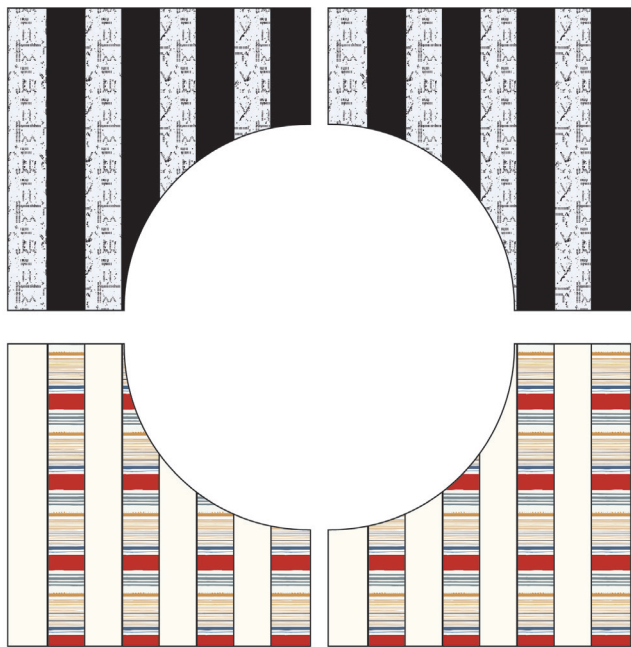


DIAGRAM 3

- Use template **b** to trim strip sets **C** and **D** as shown in the Diagram 4.

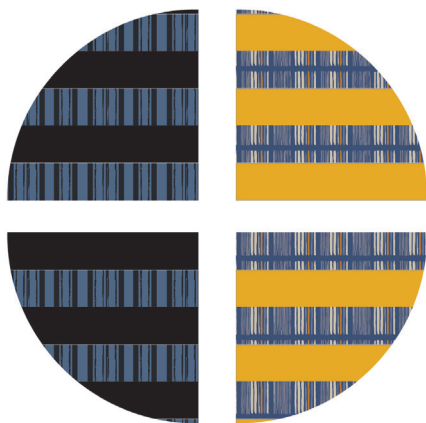


DIAGRAM 4

- Join template a to its correspondent template b.
- Join the four resulting blocks to finish the quilt top.
- For fabric placement and attachment follow Diagram 5.

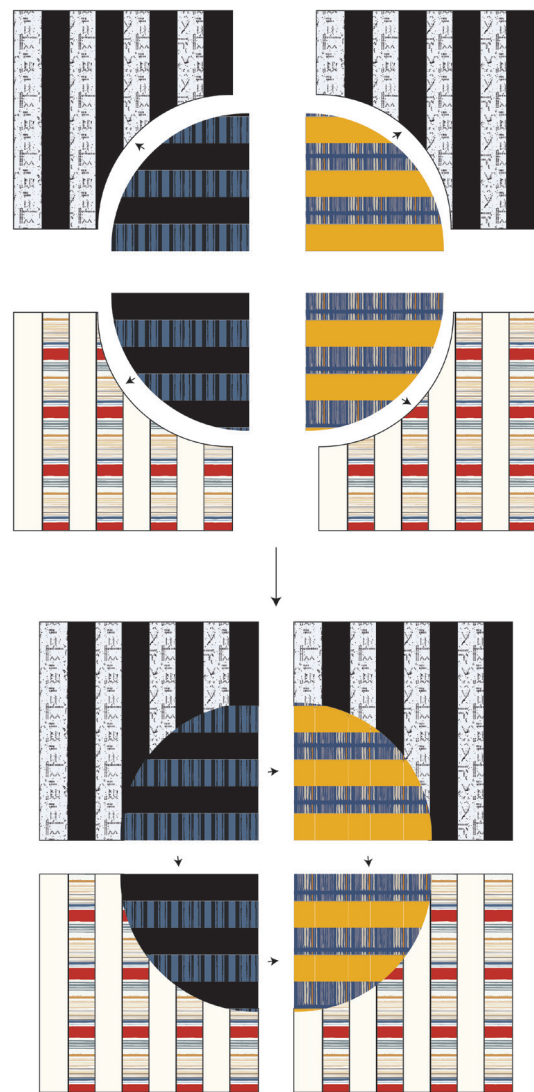


DIAGRAM 5

QUILT ASSEMBLY

Sew rights sides together.

- Place BACKING FABRIC on a large surface wrong side up. Stretch it with masking tape against that surface.
- Place BATTING on top of backing fabric.
- Place TOP on top of the batting with right side facing up. Smooth away wrinkles using your hands.
- Pin all layers together and baste with basting thread, using long stitches. You can also use safety pins to join the layers.
- Machine or hand quilt starting at the center and working towards the corners. Remember that quilting motifs are a matter of personal preference. Have fun choosing yours!
- After you finished, trim excess of any fabric or batting, squaring the quilt to proceed to bind it.

Template a 2

daynight

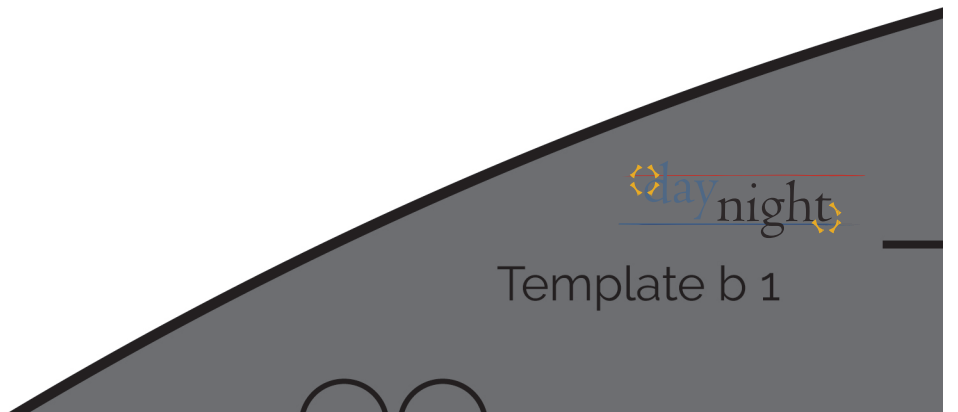
day night

Template a 9



day night

Template b 1





day night

Template a 11

day night

Template a 13



day night

Template b 3





Template a 14

day night



Template a 15

daynight



Template b 7

 day night 



Template b 8

