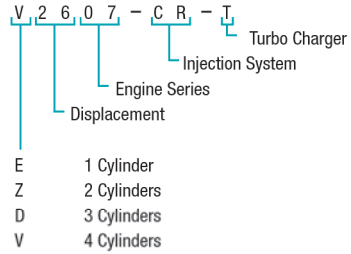


Non Regulated

How to read your engine model



Legend:

- CR Common rail system
- T Turbo
- TI Turbo Intercooler
- DI Direct Injection
- E.. Emission certified according to Tier 2/3/4 or comparable
- H High Power

Specifications are subject to change without notice.
 Power based on SAE J1995 Gross Power (without air cleaner, muffler, fan, with alternator without load)

The data on this chart are for information purposes only and do not represent binding values.

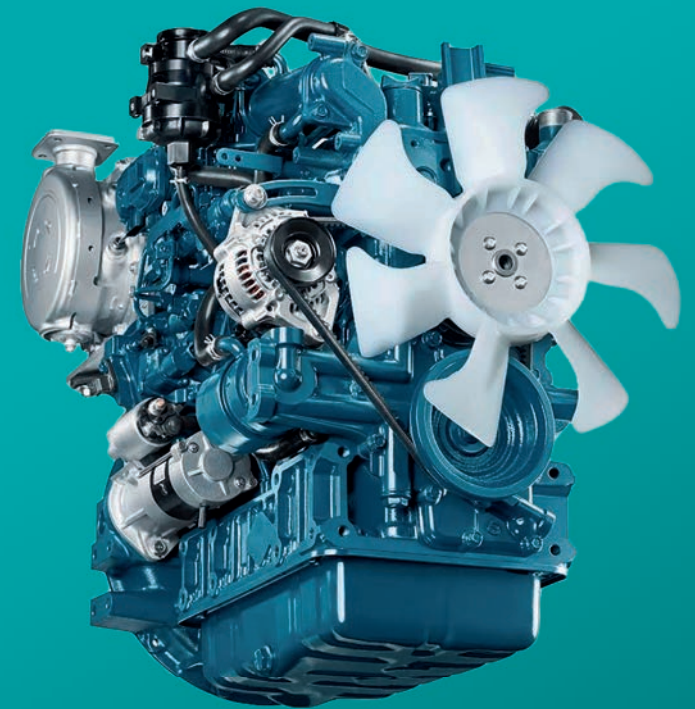
For details ask your nearest Kubota dealer.

Date: April 2024

Engine Model	kW	Power	Engine Speed	Torque (max)
OC60-E3	4,5		3600 rpm	2000-2600 rpm
OC95-E3	7,0		3600 rpm	2300 rpm
EA330-E3	5,2		3000 rpm	2000 rpm
Z482-E3	9,9		3600 rpm	2600 rpm
Z602-E3	12,5		3600 rpm	2600 rpm
D722-E3	14,9		3600 rpm	2600 rpm
D902-E3	18,5		3600 rpm	2600 rpm
D1005-E3	18,5		3600 rpm	2600 rpm
D1105-E3	21,7		3600 rpm	2600 rpm
D1105-T-E3	24,5		3000 rpm	2000 rpm
D1305-E3	21,7		3000 rpm	2000 rpm
V1505-E3	29,0		3600 rpm	2600 rpm
V1505-T-E3	33,0		3000 rpm	2000 rpm
D1503-M-E3	23,8		2800 rpm	1600 rpm
D1703-M-E3	26,1		2800 rpm	1600 rpm
D1803-M-E3	27,9		2700 rpm	1600 rpm
D1803-M-DI-E3	27,9		2700 rpm	1600 rpm
V2003-M-E3	32,6		2800 rpm	1600 rpm
V2203-M-E3	35,9		2800 rpm	1600 rpm
V2403-M-E3	36,5		2700 rpm	1600 rpm
V2403-M-DI-E3	36,5		2700 rpm	1600 rpm
V2403-M-T-E3	44,0		2700 rpm	1800 rpm
V2403-M-DI-T-E3	36,5		2200 rpm	1200 rpm
V2607-DI-E3	36,5		2700 rpm	1600 rpm
V2607-DI-T-E3	49,2		2700 rpm	1600 rpm
V3307-DI-T-E3	55,4		2600 rpm	1600 rpm
V3600-E3	49,8		2600 rpm	1600 rpm
V3600-T-E3	63,0		2600 rpm	1600 rpm
V3800-DI-T-E3	74,0		2600 rpm	1600 rpm

Nm 0 30 60 90 120 150 180 210 240 270 300 330 360 390 420

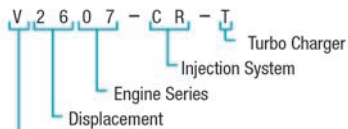
Diesel Engine Guide





EU Stage V EPA Tier 4 / CARB Tier 4

How to read your engine model



- E 1 Cylinder
- Z 2 Cylinders
- D 3 Cylinders
- V 4 Cylinders

Legend:

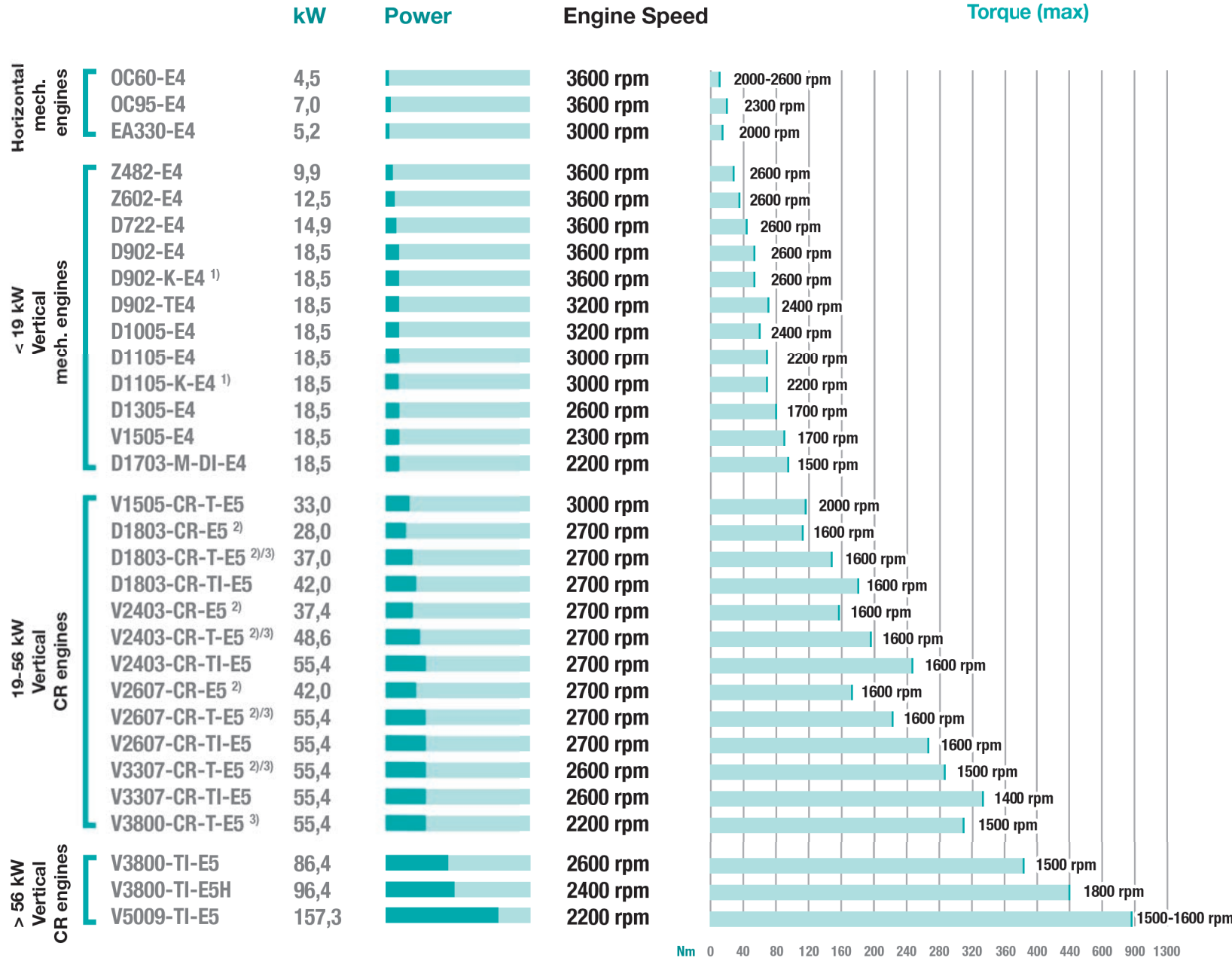
- CR Common rail system
- T Turbo
- TI Turbo Intercooler
- DI Direct Injection
- E.. Emission certified according to Tier 2/3/4 or comparable
- H High Power

Specifications are subject to change without notice.
Power based on SAE J1995 Gross Power (without air cleaner, muffler, fan, with alternator without load)

The data on this chart are for information purposes only and do not represent binding values.

For details ask your nearest Kubota dealer.

Date: April 2024



Kubota Corporation
2-47, Shikitsu Higashi 1-Chome
Naniwa-Ku, Osaka 556-8601
Japan
www.kubota.com
http://global.engine.kubota.co.jp

Kubota Europe S.A.S.
19, rue Jules Verceyruisse
CS 50088
95101 Argenteuil Cedex
France
Phone: +33 01 34 26 34 34
E-mail: ke_g.moteur@kubota.com
www.kubota-eu.com

Kubota (Deutschland) GmbH
Senefelderstraße 3 - 5
63110 Rodgau
Germany
Phone: +49 6106 873-0
E-mail: motoren@kubota.de
www.kubota-eu.com

Kubota (U.K.) Limited
Dormer Road
Thame OX9 3UN
United Kingdom
Phone: +44 01844 268150
E-mail: kuk_g.engines@kubota.com
www.kubota-eu.com

¹⁾ Electronically controlled engine
²⁾ In EU also available as Power Pack
³⁾ For EPA/CARB Tier 4 also available in DOC option with intercooler; model name and performance data may differ