



REDD Architecture for Green Cathedrals

IETA-IEA-EPRI Greenhouse Gas
Emissions Trading Workshop

Steve Schwartzman
Director, Tropical Forest Policy
Environmental Defense Fund

Brazil nut (*Bertholettia excelsa*),
Anfrizio River, Para

UNFCCC REDD

Convergence

REDD +

Phased

National Reference Levels +

Public & Private Finance

Indigenous Rights

COP verification guidelines/
expert review/technical panel



The American Clean Energy Security Act – ACES

- 17% below 2005 by 2020
- 83% below 2005 by 2050
- 2 billion t/CO₂/yr offsets
- At the limit of political viability

ACES -- REDD

- International Allowance trading
- 1 billion t/CO₂/yr international offsets
- 5% allowance set-aside
- National baselines, projects limited

The Senate

- 60 votes (67 to ratify)
- US Climate Action Partnership (USCAP – 25 companies, 4 NGOs)
- Obama
- 71% of voters for, 28% against ACES
- TFCC – 20 companies and NGOs

ENVIRONMENTAL DEFENSE FUND

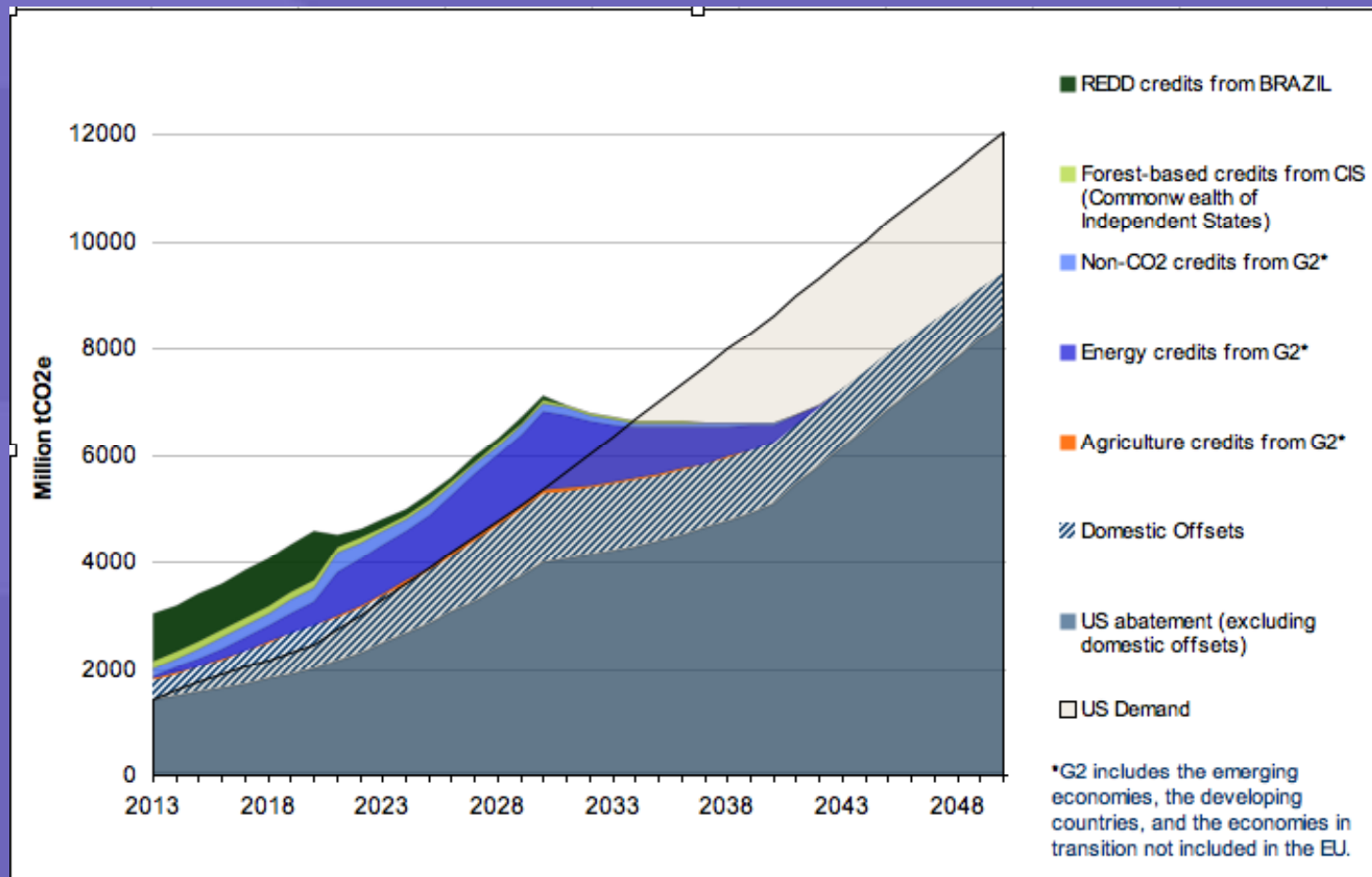
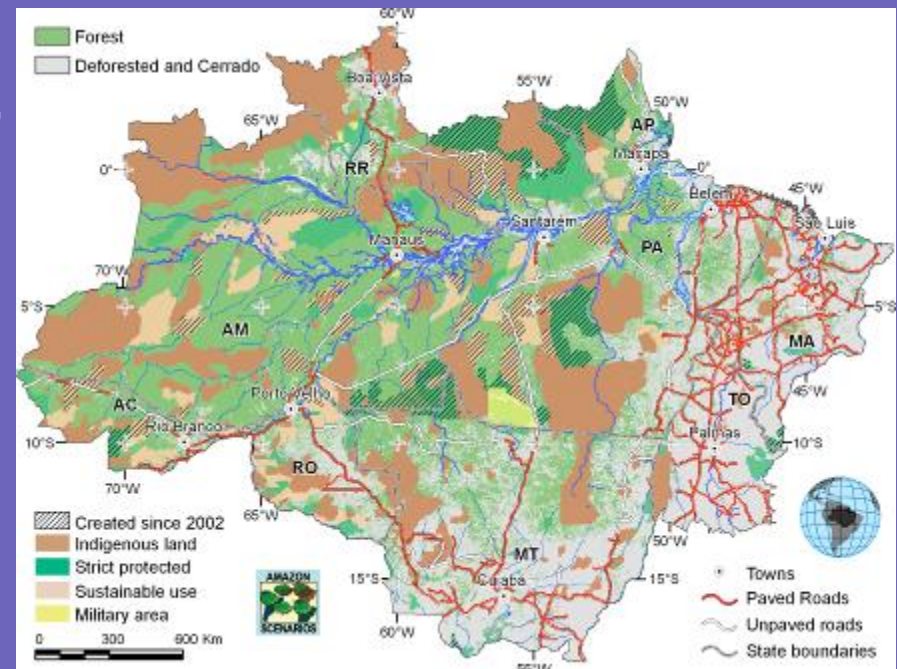


Figure 2. US domestic abatement and international purchases (2013-2050)

Note: Figure illustrates “20% of Reductions Extrapolated” scenario without the constraint of Brazil’s national target.

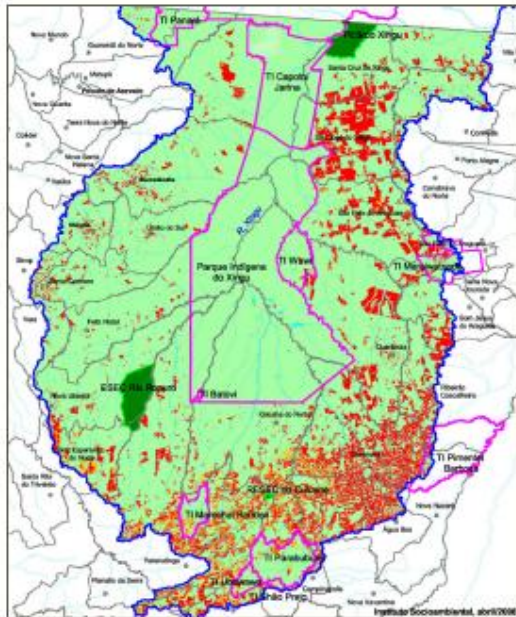
Brazil National Plan to Combat and Prevent Deforestation

- Four complementary national satellite monitoring systems (annual deforestation, monthly deforestation, degradation, fires); data on the internet
- 622,400 km² new protected areas (= France) 2003 – 2008
- law enforcement operations (police, army, environmental agency)
- 700 illegal loggers jailed

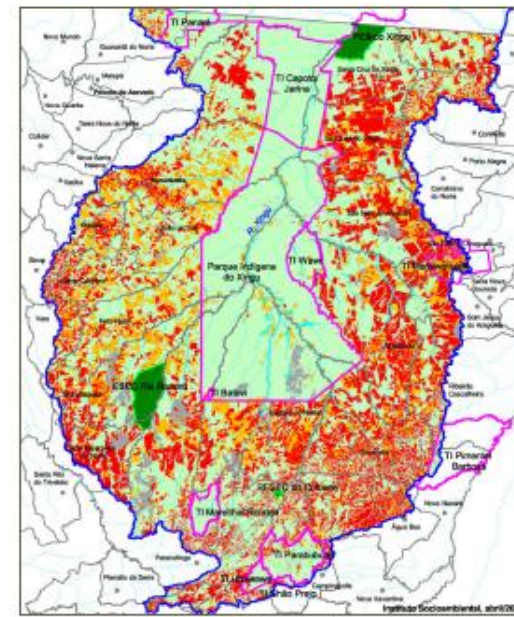


Amazon Indian lands and parks stop deforestation

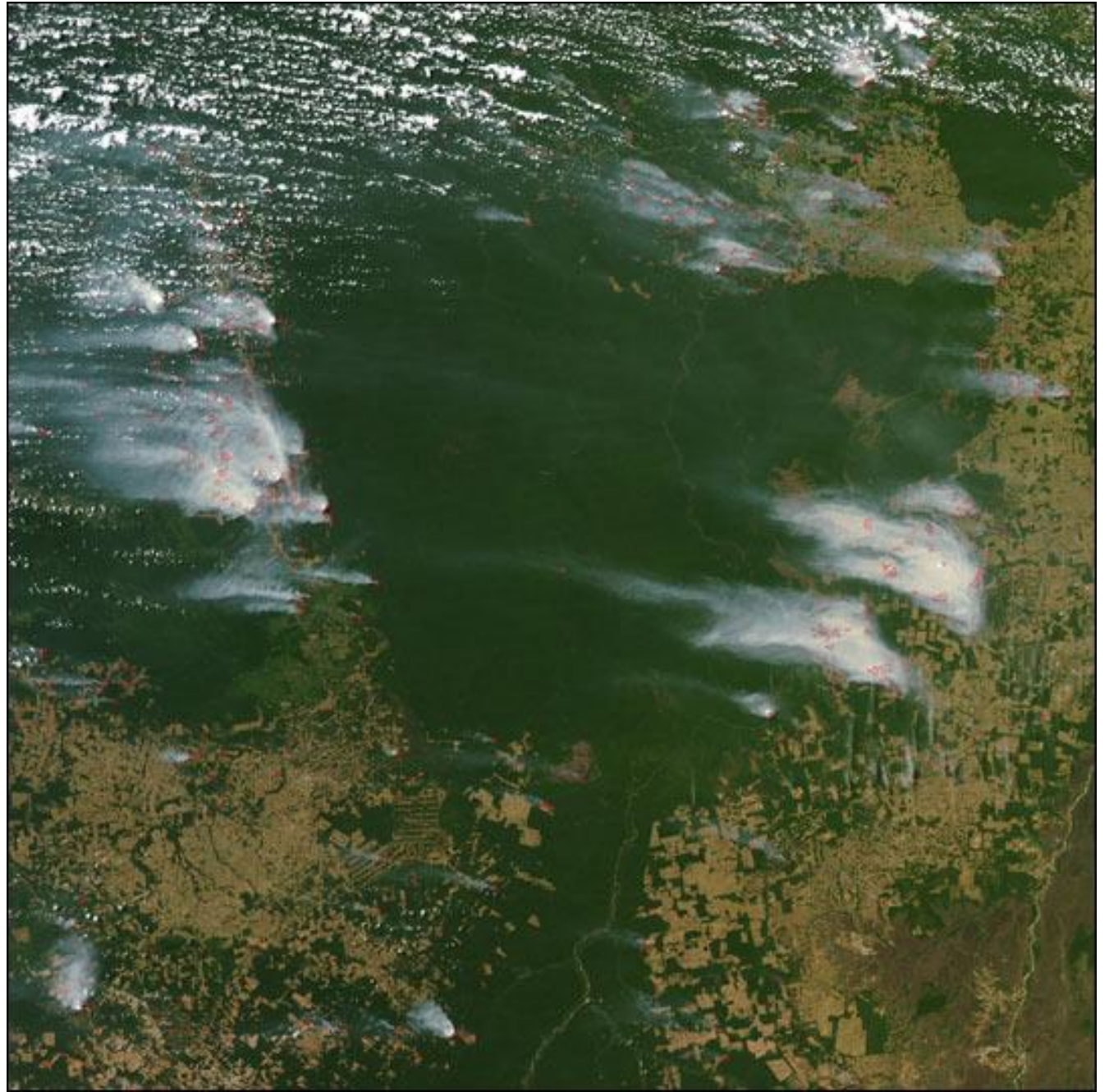
REGIÃO DAS CABECEIRAS DO RIO XINGU - DESMATAMENTO ATÉ 1994



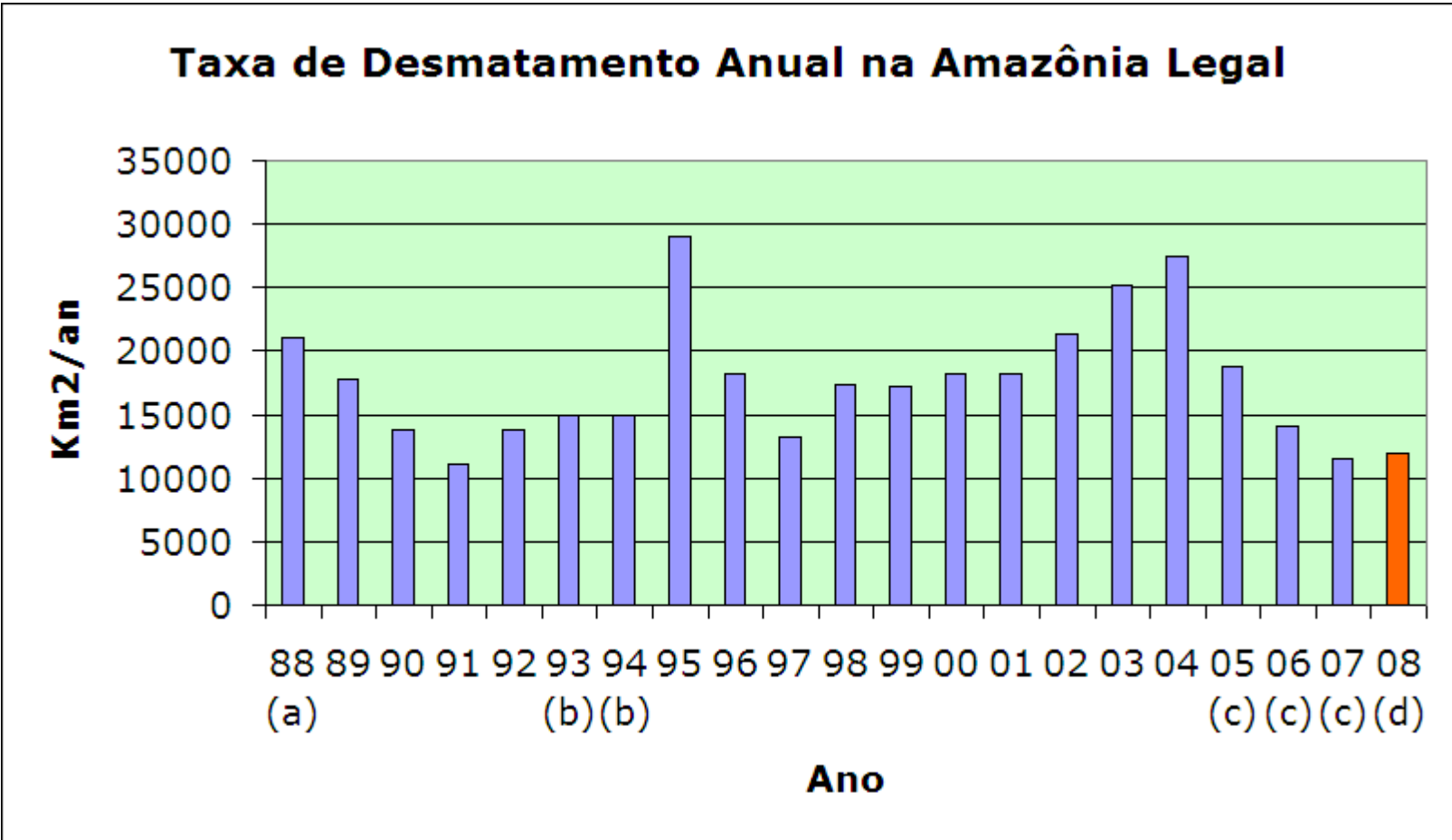
REGIÃO DAS CABECEIRAS DO RIO XINGU - DESMATAMENTO ATÉ 2005



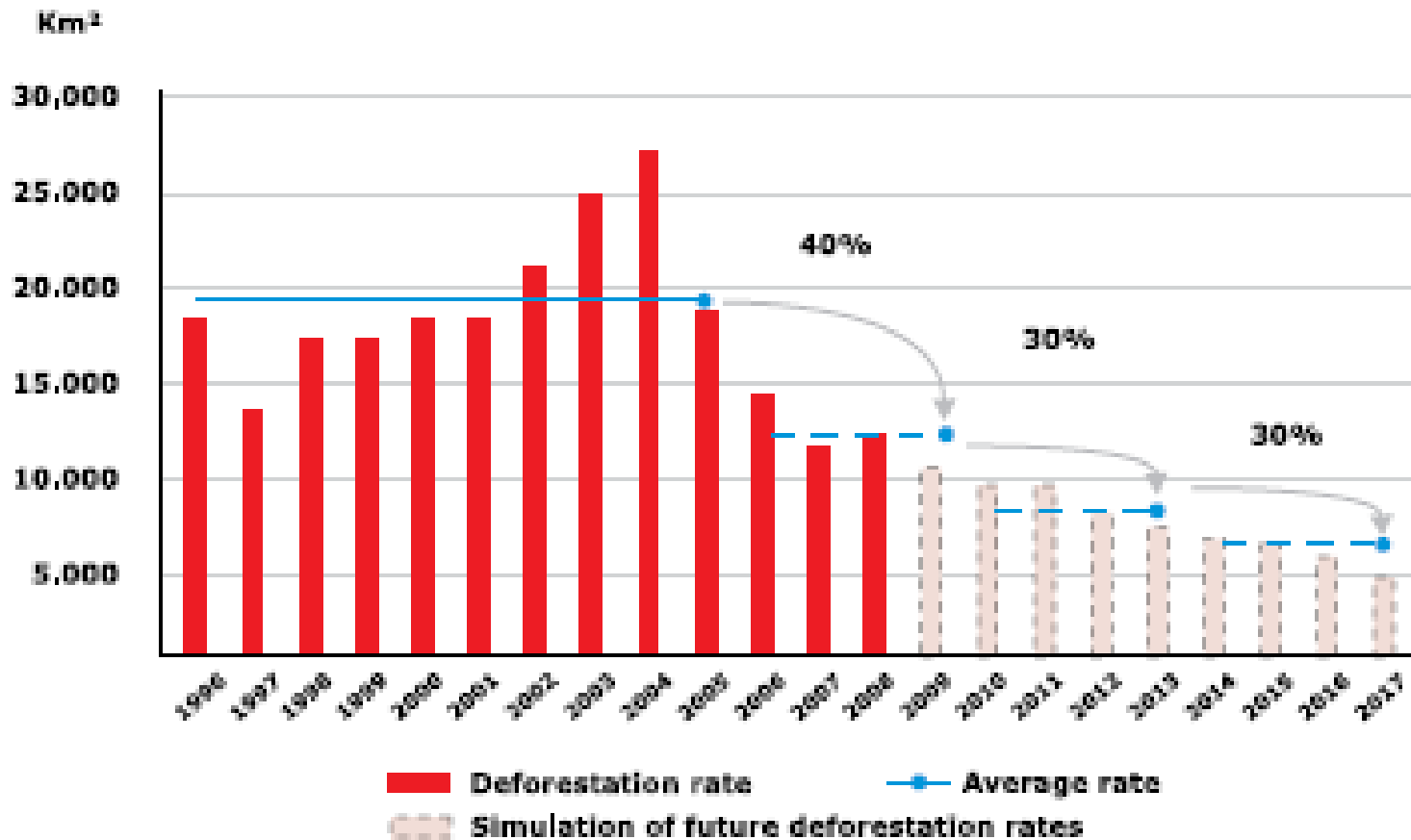
Xingu River Headwaters, Mato Grosso, Brazil. Deforestation around Xingu Indigenous Park (purple outline), 1994 and 2005



Annual Amazon Deforestation 1988 – 2008 (National Space Research Institute – INPE)

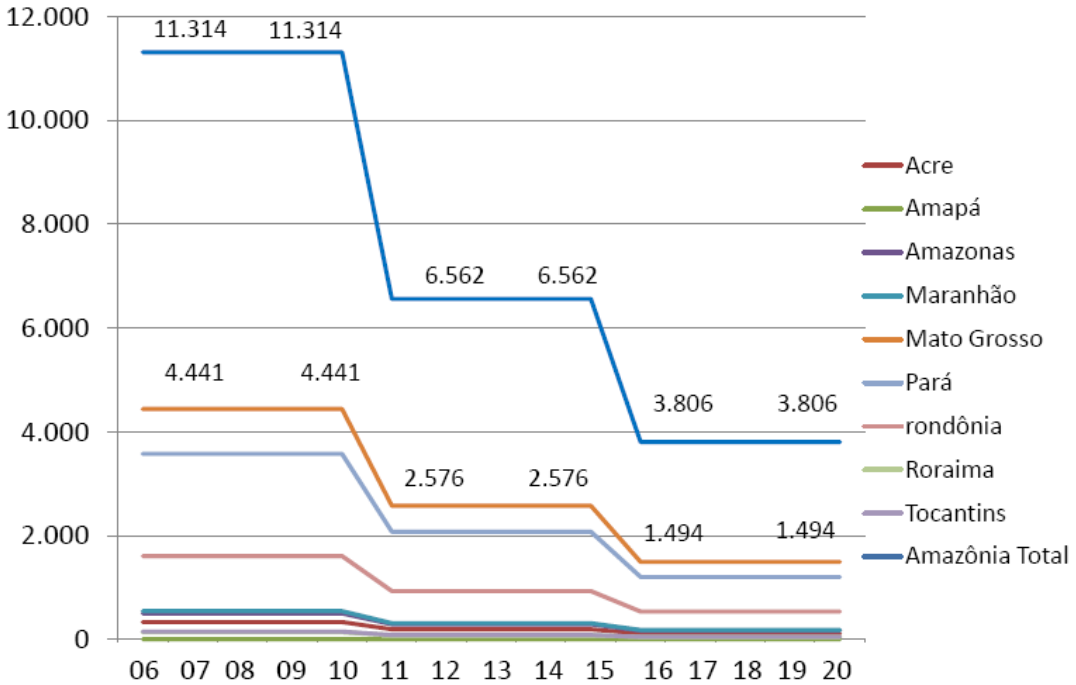


Trends in deforestation rate in the Amazon



Governor's Climate and Forests Task Force – California, Wisconsin, Illinois, Amapa, Para, Amazonas, Mato Grosso, Papua, Aceh

PNMC Total e Estados



Projects in the context of national, state baselines

- Risk Insurance
- Options



e

ENVIRONMENTAL DEFENSE FUND

finding the ways that work



When?

One, two, many markets?

Regulations



photo: Adrian Cowell

The future of the large remaining tropical forests of the earth under BAU.



Deforestation for soy plantation, Mato Grosso state,
Brazil.