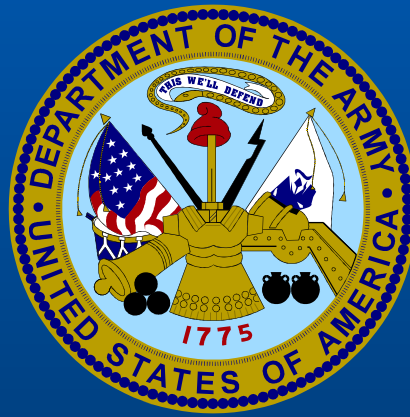


LSD



LSD CONTENT

◆ ***What is LSD?***

- ◆ ***History***

- ◆ ***How Is LSD Taken?***

- ◆ ***Why Is LSD Used?***

◆ ***What are the Effects?***

- ◆ ***Physical Damage***

- ◆ ***Psychological Damage***

◆ ***Use in the United States***

◆ ***Testing for LSD***

◆ ***Useful Links***



WHAT IS LSD?

- ***The full chemical name of LSD is d-lysergic acid diethylamide.***
- ***LSD is classified as a hallucinogenic chemical (Hallucinogen) that is derived from a parasitic fungus that grows on rye.***
- ***LSD is produced as a crystal, then dissolved in alcohol prior to sale and consumption.***
- ***LSD users describe their experience with the drug as a “trip”.***

STREET NAMES

LSD is known by hundreds of street names, some of the more universal are:



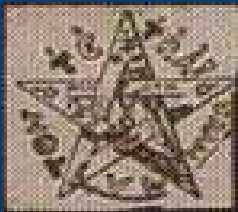
Hits



Cid



Tabs



Microdot
S



Trips



Acid



Sid



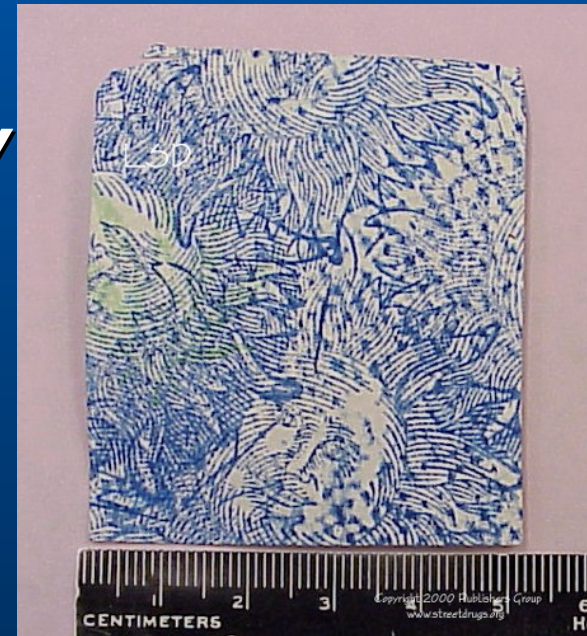
Blotter

HISTORY of LSD

1938- While researching blood stimulants, Albert Hofmann synthesizes LSD for the first time.

1943- Albert Hofmann accidentally consumes LSD, the first time LSD is consumed by a human. Two days later Albert Hofmann becomes the first person to intentionally consume LSD as well.

1949- LSD enters the United States and is studied in Boston and Los Angeles.



HISTORY OF LSD (cont.)

1951- CIA becomes aware of LSD and begins experimenting with it.

1952- The first study is published about treating depression with LSD.

1953- Dr. Humphrey Osmond begins to use LSD to treat alcoholics.

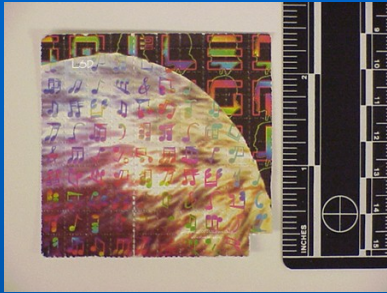
1962- FDA restricts LSD research, first LSD related arrests are made.

1963- LSD is found on the streets (liquid on sugar cubes).

1966- LSD becomes illegal in California.

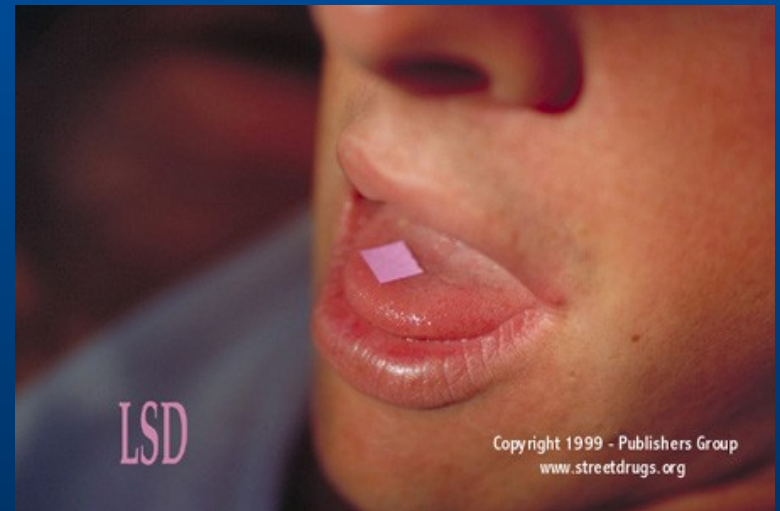
1967- Federal government bans LSD in the U.S.

1970- LSD is placed in Schedule 1 of the Controlled Substance Act.



HOW IS LSD CONSUMED?

LSD is generally taken orally, either as a pill, a piece of blotter paper (as seen on right), or via liquid dripped onto a sugar cube. LSD can also be absorbed through the users skin.



LSD

Copyright 1999 - Publishers Group
www.streetdrugs.org

PHYSICAL EFFECTS

- ***Dilated Pupils***
- ***Increased Body Temperature***
- ***Increased Heart Rate***
- ***Increased Blood Pressure***
- ***Extreme Sweating***
- ***Loss of Appetite***
- ***Sleeplessness***
- ***Dry Mouth***
- ***Tremors***
- ***Nausea***
- ***Loss of Motor Skills***
- ***Loss of Coordination***
- ***Seizures***

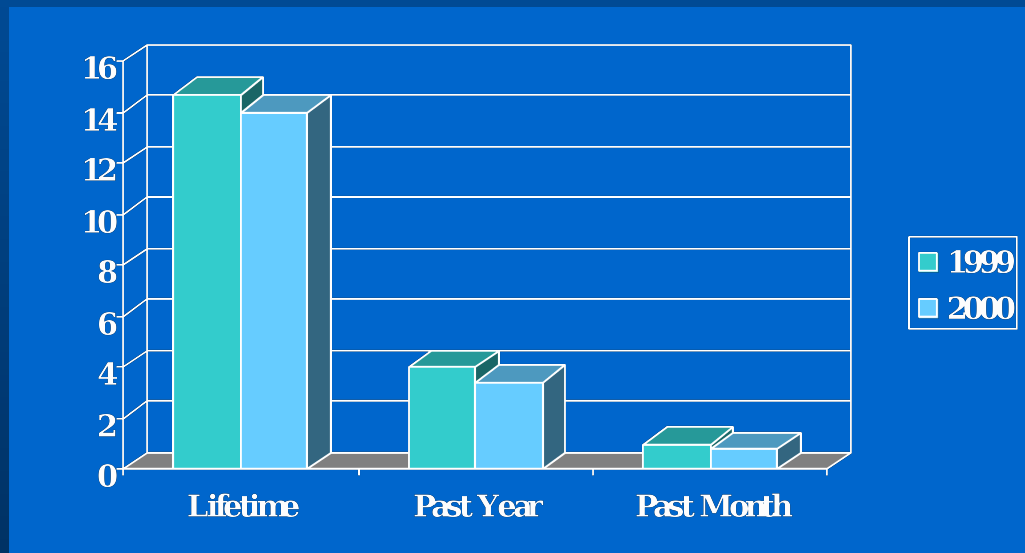
PSYCHOLOGICAL EFFECTS

Shortly after the physical effects set in, dramatic psychological effects begin to occur. The majority of these effects are due to severe changes to the users perception, thought, and mood:

- » Vivid Pseudo-hallucinations***
- » Loss of depth perception***
- » Sensation of floating***
- » Sensation of being pressed down***
- » Loss of thought process control, i.e. a long lost memory resurfacing.***
- » Fusion of the senses (seeing music or hearing colors)***
- » Feelings of fear, depression, or anxiety known as "BAD TRIPS"***
- » Distorted perception of time***
- » True hallucinations***

LSD USE IN THE UNITED STATES

LSD use in the United States was on a slight decline between 1999 and 2000 amongst people ages 18-25.



***Percentage of People Age 18-25 Reporting LSD Use,
1999-2000 National Household Survey on Drug Abuse.***

LONG TERM EFFECTS OF LSD

The long-term effects of LSD are known as “FLASHBACKS”.

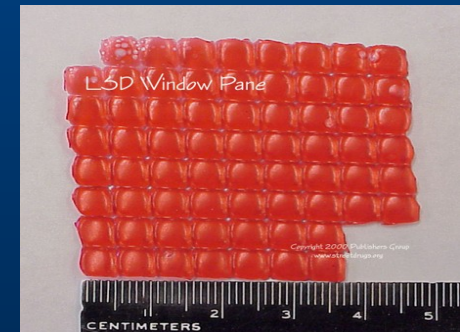
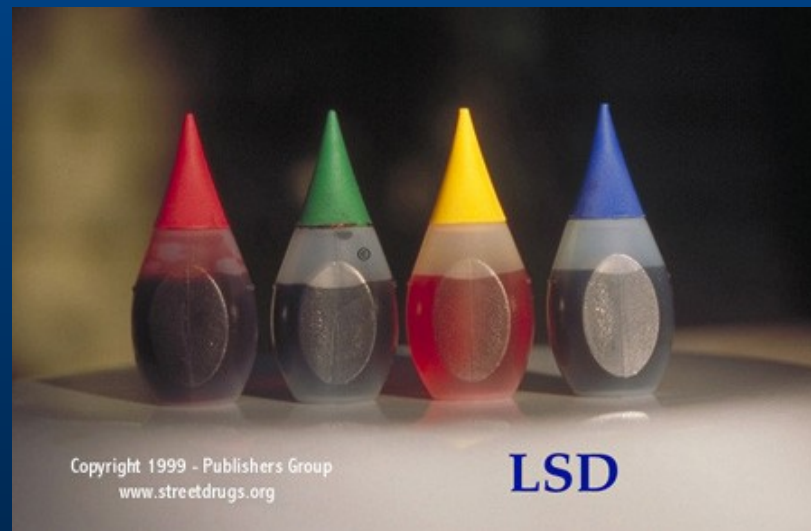
- ***Flashbacks are spontaneous, unpredictable recurrences of the LSD experience without the ingestion of more of the drug.***
- ***There are three types of flashbacks:***
 - ***Emotional***
 - ***Somatic***
 - ***Perceptual***

FLASHBACKS

- ***Emotional Flashbacks- The most dangerous type, brings back feelings of fear, depression, and anxiety. Reminds the user of a “bad trip”.***
- ***Somatic Flashbacks- This type of flashback alters sensations of the body that are associated with the original “trip”, i.e. tremors, dizziness and nausea.***
- ***Perceptual Flashbacks- These consist of the sensory distortions that come with the original dose, i.e. seeing music and hearing colors.***

LSD TESTING IN THE ARMY

- ***LSD is detectable in urine for 1-3 days.***
- ***The Army tests for LSD on a rotational schedule.***



ADDITIONAL RESOURCES

- ***<http://www.erowid.org/chemicals/lsd/lsd.shtml>***
- ***<http://www.nida.nih.gov/Infofax/lsd.html>***
- ***<http://www.health.org>***
- ***<http://www.usdoj.gov/dea/pubs/lsd/toc.htm>***
- ***<http://paranoia.lycaeum.org/psychedelics/lsd>***
- ***<http://www.whitehousedrugpolicy.gov/drugfact/lsd/>***



UNITED STATES ARMY CENTER FOR SUBSTANCE ABUSE PROGRAMS



**For More Information, Contact:
Your Unit Prevention Leader, or
The Fort Gordon ASAP
791-4178 / 3674**