



OPW

Oifig na
nOibreacha Poiblí
Office of Public Works

We are going on a trip to Ormond Castle in Carrick-on-Suir.

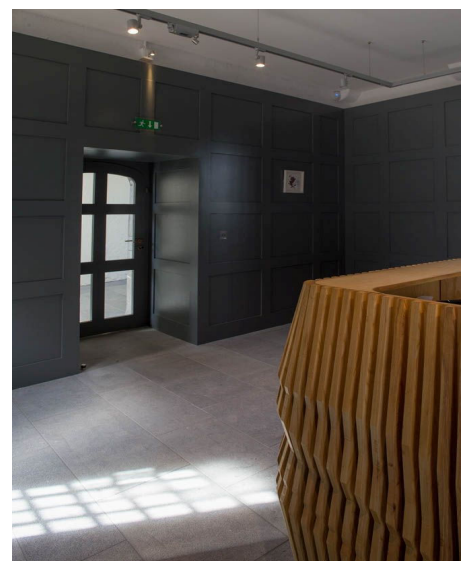
‘Black Tom’ Butler built this house over 450 years ago. He was very powerful and wealthy.

In this story we will learn how to enter the castle and find out what to expect during our visit.



This is the entrance. We must be careful on the cobbles especially if they're wet.

When we enter, the reception is on our left. There may be a queue and we will wait.





You will meet a welcoming guide. They will issue you a ticket and assist with your visit.

Accessible toilets are located to the left of the reception desk. There might be a queue and we might have to wait. The hand dryers might get loud.



In the audio-visual room you can watch two 7 minute animated videos about 'Black Tom'
It might get very loud.





In our exhibition room you can use our touch screen storybooks to learn about the pictures in the room. They are easy to use.



This room also has a model of what the castle looked like over 450 years ago.



As we explore the courtyards we must not run in case we slip or trip on the steps or on the stones.

To see the other rooms of the house we must join one of the friendly guides on a guided tour. This takes up to 40 minutes. During the tour we will not touch the furniture or sit on the chairs. They are very old and might get damaged. We will not take photographs when we are inside. If we need to leave, that's okay. We must tell the guide so that they know we are going.



The first room inside is the Ladies' Parlour. This is a small room and it may be crowded.



To get to the next room we must climb the stairs.

We must take our time and hold the rail. This is to make sure we do not trip and fall.



When we go into the Dining Chamber it might be dark. It is a small room and it might get crowded. We must be careful not to stand on the carpet. It is very old.



The Long Gallery is a very big room and it may be very bright. Please stay with the guide and listen to the story. We must not run because the floor is uneven and we might fall.



The Earl's Chamber is a big room.



To get to the last room we must climb some stairs. We must take our time and be very careful as the stairs are quite narrow.



The last room of the guided tour is the attic. This is a large space but has some low doorways. We must be careful not to bump our heads. It can be dark.



When the tour finishes our guide will be happy to answer any other questions we might have.

We will then say goodbye and leave through the front door.

