

Kit and Caboodle

Featuring Passionflower by Anna Maria Horner

The Kit and Caboodle quilt uses every print from Anna Maria Horner's new Passionflower collection. The large pieces of fabric let the bold designs flourish, and quilting with an equally oversized hand-stitch would really help the quilt shine!

Collection:	Passionflower by Anna Maria Horner
Technique:	Piecing
Skill Level:	Beginner
Crafting Time:	Weekend*
Finished Size:	72" x 90" (182.88cm x 228.60cm)

*Crafting time based on Beginner skill level

Project designed by Brittney Anderson

Tech edited by Kathryn Patterson

Fabric Requirements

DESIGN	COLOR	ARTICLE CODE	YARDAGE
(A) Belonging	Magenta	PWAH126.MAGEN	3/8 yard (34.29cm)
(B) Belonging	Navy	PWAH126.NAVYX	1/4 yard (22.86cm)
(C) Belonging	Teal	PWAH126.TEALX	1/8 yard (30.48cm)
(D) Cartwheels	Flip	PWAH127.FLIPX	1/4 yard (22.86cm)
(E) Cartwheels	Jump	PWAH127.JUMPX	1/4 yard (22.86cm)
(F) Cartwheels	Run	PWAH127.RUNXX	1/8 yard (30.48cm)
(G) Imposter	Candy	PWAH128.CANDY	1/4 yard (22.86cm)
(H) Imposter	Medieval	PWAH128.MEDIE	1/8 yard (30.48cm)
(I) Imposter	Patina	PWAH128.PATIN	1 yard (91.44cm)*
(J) Migration	Dahlia	PWAH129.DAHLI	1/8 yard (30.48cm)
(K) Migration	Night	PWAH129.NIGHT	3/8 yard (34.29cm)
(L) Migration	Prussian	PWAH129.PRUSS	1/4 yard (22.86cm)
(M) Broadcast	Autumn	PWAH130.AUTUM	1/4 yard (22.86cm)
(N) Broadcast	Marine	PWAH130.MARIN	1/4 yard (22.86cm)
(O) Broadcast	Marsh	PWAH130.MARSH	1/4 yard (22.86cm)
(P) Keys	Kick	PWAH131.KICKX	1/4 yard (22.86cm)
(Q) Keys	Pink	PWAH131.PINKX	1/8 yard (30.48cm)
(R) Keys	Toffee	PWAH131.TOFFE	1/8 yard (30.48cm)
(S) Lace	Marmalade	PWAH132.MARMA	3/8 yard (34.29cm)
(T) Lace	Burm	PWAH132.BURMX	1/4 yard (22.86cm)
(U) Lace	Lush	PWAH132.LUSHX	1/4 yard (22.86cm)
(V) Passiflora	Glimmer	PWAH133.GLIMM	1/8 yard (30.48cm)
(W) Passiflora	Heather	PWAH133.HEATH	1/4 yard (22.86cm)
(X) Passiflora	Silver	PWAH133.SILVE	1/8 yard (30.48cm)

* includes binding

Backing (Purchased Separately)

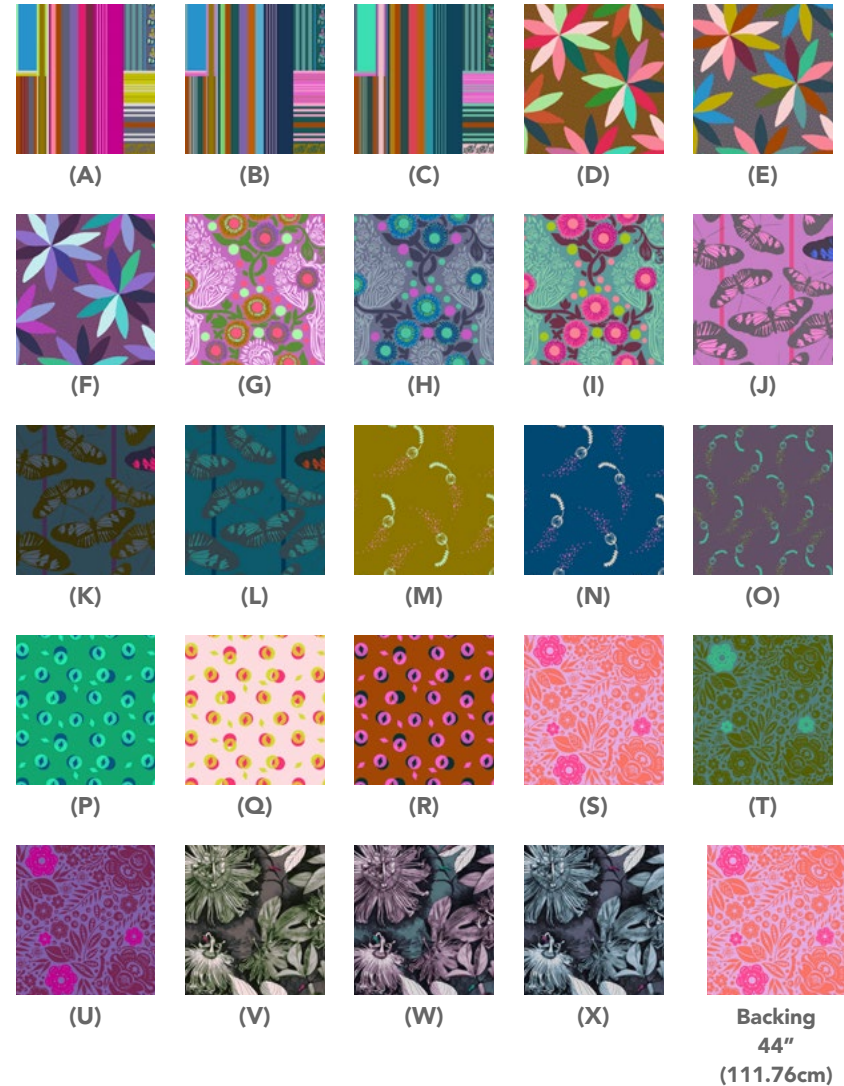
44" (111.76cm) wide

Lace Marmalade PWAH132.MARMA 5 1/2 yards (5.03m)

OR

108" (274.32cm) wide

2 1/4 yards (2.06m)



Additional Requirements

- 100% cotton thread in colors to match
- 80" x 80" (203.20cm x 203.20cm) batting

Cutting

WOF = Width of Fabric

Fabrics A, K, and S, cut from each:

(1) 11½" x 40½" (29.21cm x 102.87cm) strip

Fabrics B, P, and U, cut from each:

(1) 7½" x 40½" (19.05cm x 102.87cm) strip

Fabrics C and Q, cut from each:

(1) 9½" x 31½" (24.13cm x 80.01cm) strip

Fabrics D, E, M, and T, cut from each:

(1) 5½" x 40½" (13.97cm x 102.87cm) strip

Fabric F, cut:

(1) 10½" x 40½" (26.67cm x 102.87cm) strip

Fabric G, cut:

(1) 4½" x 40½" (11.43cm x 102.87cm) strip

Fabric H, cut:

(1) 8½" x 31½" (21.59cm x 80.01cm) strip

Fabric I, cut:

(1) 8½" x 40½" (21.59cm x 102.87cm) strip
 (9) 2½" x WOF (6.35cm x WOF) strips for binding

Fabric J, cut:

(1) 9½" x 40½" (24.13cm x 102.87cm) strip

Fabric L, cut:

(1) 6½" x 31½" (16.51cm x 80.01cm) strip

Fabric N, cut:

(1) 3½" x 40½" (8.89cm x 102.87cm) strip

Fabric O, cut:

(1) 5½" x 31½" (13.97cm x 80.01cm) strip

Fabric R, cut:

(1) 10½" x 32½" (26.67cm x 82.55cm) strip

Fabrics V and X, cut from each:

(1) 8½" x 40½" (21.59cm x 102.87cm) strip

Fabric W, cut:

(1) 3½" x 31½" (8.89cm x 80.01cm) strip

Sewing

All seam allowances are ¼" (.64cm) and pieces are sewn sides together. Each section is created by sewing strips together in order. When sewing long strips together, it is helpful to find the middle, and even quarters, of each piece along the lengths and pin to ensure accuracy.

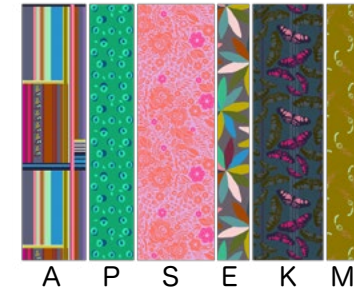
Section 1

1. From left to right, sew together these strips:

Fabric A
Fabric P
Fabric S
Fabric E
Fabric K
Fabric M

Press all seams in same direction.

Section 1



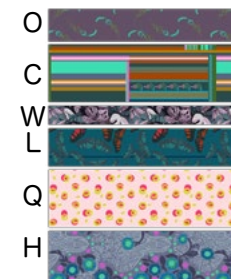
Section 2

2. From top to bottom, sew together these strips:

Fabric O
Fabric C
Fabric W
Fabric L
Fabric Q
Fabric H

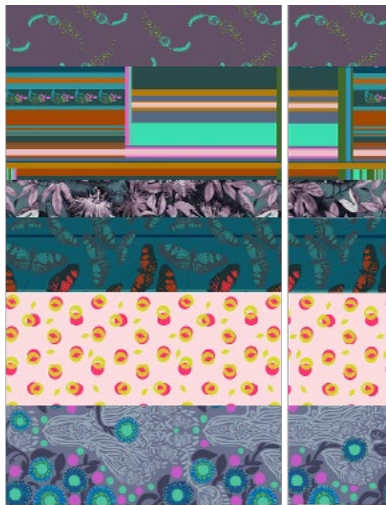
Press all seams in same direction.

Section 2



3. Sub-cut Section 2 into (2) pieces as shown in **Fig. 1**.
Discard any trimmings.

Fig. 1



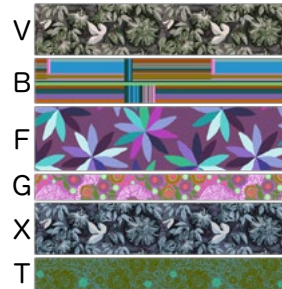
22 1/2" x 40 1/2"
(57.15cm x 1.03m)

8 1/2" x 40 1/2"
(21.59cm x 1.03m)

Section 3

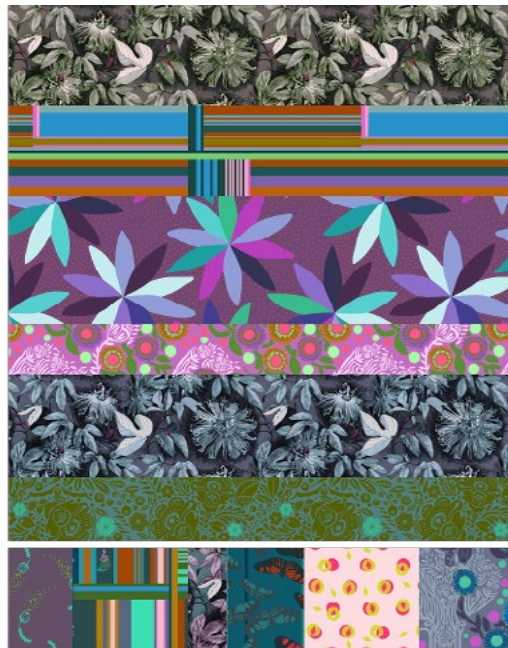
4. From top to bottom, sew together these strips:
Fabric V
Fabric B
Fabric F
Fabric G
Fabric X
Fabric T
Press all seams in same direction.

Section 3



5. Sew the 8 1/2" x 40 1/2" (21.59cm x 102.87cm) portion of Section 2 to the bottom of Section 3, noting the orientation in **Fig. 2**.

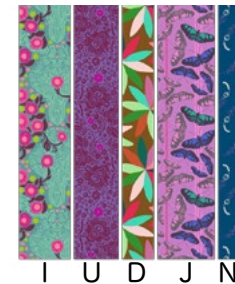
Fig. 2



Section 4

6. From left to right, sew together these strips:
Fabric I (8 1/2"-wide strip)
Fabric U
Fabric D
Fabric J
Fabric N
Press all seams in same direction.

Section 4



7. Sew **Fabric R** strip to the bottom of Section 4 (Fig. 3).

Fig. 3



R

Quilt Top Assembly

8. Sew Section 1 to Section 2 along the 40½" (102.87cm) sides. (**Quilt Layout** diagram page 6)
9. Sew Section 3 to Section 4 along the 50½" (128.27cm) sides.
10. Sew the top and bottom halves of the quilt top together.

Finishing

11. Sew together the (9) 2½" x WOF (6.35cm x WOF) **Fabric I** binding strips end to end using diagonal seams. Press the seams open. Press the binding strip in half wrong sides together.
12. Layer the backing (wrong side up), batting, and quilt top (right side up). Baste the layers together and quilt as desired. Trim excess batting and backing even with the top after quilting is completed.
13. Leaving an 8" (20.32cm) tail of binding, sew binding to top of quilt through all layers matching all raw edges. Miter corners. Stop approximately 12" (30.48cm) from where you started. Lay both loose ends of binding flat along quilt edge. Where these two loose ends meet, fold them back on themselves and press to form a crease. Using this crease as your stitching line, sew the two open ends of the binding right sides together. Trim seam to ¼" (.64cm) and press open. Finish sewing binding to quilt.
14. Turn the binding to the back of the quilt and hand-stitch in place.

Quilt Layout

