

Rainbow Blur Quilt

Featuring Sweet Dreams by Anna Maria Horner

Celebrate all of the vibrant prints in Anna Maria Horner's new Sweet Dreams collection with this easy-to-piece design. Simple squares and large pieced blocks in bold prints are intermingled, blending and blurring the rainbow prints in an explosion of riotous color.

Collection:	Sweet Dreams by Anna Maria Horner
Technique:	Piecing, Quilting
Skill Level:	Confident Beginner
Crafting Time:	Week*
Finished Size:	Finished Size of Project: 72" x 90" (182.88cm x 228.60cm) Finished Size of Block: 118" x 18" (45.72cm x 45.72cm)

*Crafting time based on Confident Beginner skill level



COATS

Project designed by Brittney Anderson

Tech edited by Barbara Weiland

Fabric Requirements

DESIGN	COLOR	ARTICLE CODE	YARDAGE
(A) Cacophony	Charcoal	PWAH118.CHARC	½ yard (45.72cm)
(B) Cacophony	Dusk	PWAH118.DUSKX	½ yard (45.72cm)
(C) Cacophony	Saffron	PWAH118.SAFFR	½ yard (45.72cm)
(D) Source Code	Glisten	PWAH119.GLIST	⅝ yard (57.15cm)
(E) Source Code	Glow	PWAH119.GLOWX	⅝ yard (57.15cm)
(F) Source Code	Spark	PWAH119.SPARK	⅝ yard (57.15cm)
(G) Day Night	Flame	PWAH120.FLAME	⅜ yard (34.29cm)
(H) Day Night	Heather	PWAH120.HEATH	⅜ yard (34.29cm)
(I) Day Night	Peacock	PWAH120.PEACO	⅜ yard (34.29cm)
(J) Garden Prism	Candy	PWAH121.CANDY	½ yard (45.72cm)
(K) Garden Prism	Lichen	PWAH121.LICHE	½ yard (45.72cm)
(L) Garden Prism	Plum	PWAH121.PLUMX	½ yard (45.72cm)
(M) Lacey	Bubblegum	PWAH122.BUBBL	1¼ yards (1.14m)*
(N) Lacey	Moss	PWAH122.MOSSX	½ yard (45.72cm)
(O) Lacey	Periwinkle	PWAH122.PERIW	½ yard (45.72cm)
(P) Ladder	Eggplant	PWAH123.EGGPL	⅜ yard (34.29cm)
(Q) Ladder	Sea	PWAH123.SEAXX	⅝ yard (57.15cm)
(R) Ladder	Space	PWAH123.SPACE	½ yard (45.72cm)
(S) Native	Gin	PWAH124.GINXX	½ yard (45.72cm)
(T) Native	Scotch	PWAH124.SCOTC	⅝ yard (57.15cm)
(U) Native	Vodka	PWAH124.VODKA	½ yard (45.72cm)
(V) Remains	Jacaranda	PWAH125.JACAR	⅜ yard (34.29cm)
(W) Remains	Midnight	PWAH125.MIDNI	½ yard (45.72cm)
(X) Remains	Seafoam	PWAH125.SEAFO	½ yard (45.72cm)

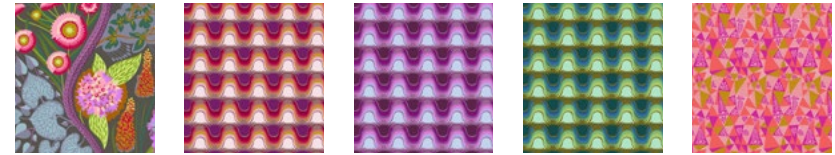
* includes binding

Backing (Purchased Separately)

44" (111.76cm)			
Source Code	Spark	PWAH119.SPARK	6 yards (5.49m)
OR			
108" (274.32cm)			
Source Code	Spark	PWAH119.SPARK	3 yards (2.74cm)



(A) (B) (C) (D) (E)



(F) (G) (H) (I) (J)



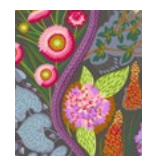
(K) (L) (M) (N) (O)



(P) (Q) (R) (S) (T)



(U) (V) (W) (X)



Backing
108"
(274.32cm)

Backing
44"
(111.76cm)



COATS

Additional Requirements

- **Coats 100% Cotton Thread**
- 80" x 98" (203.20cm x 248.92cm) quilt batting
- Rotary cutter
- Rotary cutting mat
- Quilter's ruler
- Basic sewing and pressing supplies

Cutting

Cut the pieces in the order listed for each fabric.

Fabric A, cut:

(1) 12½" (31.75cm) square

Fabric B, cut:

(1) 12½" (31.75cm) square
(2) 3½" x 7" (8.89cm x 17.78cm) rectangles

Fabric C, cut:

(1) 12½" (31.75cm) square
(2) 6½" (16.51cm) squares
(2) 3½" x 7" (8.89cm x 17.78cm) rectangles

Fabric D, cut:

(1) 18½" (46.99cm) square
(1) 6½" (16.51cm) square

Fabric E, cut:

(1) 18½" (46.99cm) square
(1) 6½" (16.51cm) square
(2) 3½" x 7" (8.89cm x 17.78cm) rectangles

Fabric F, cut:

(1) 18½" (46.99cm) square
(4) 6½" (16.51cm) squares

Fabric G, cut:

(3) 6½" (16.51cm) squares

Fabric H, cut:

(1) 6½" (16.51cm) square
(2) 3½" x 7" (8.89cm x 17.78cm) rectangles

Fabric I, cut:

(2) 6½" (16.51cm) squares
(4) 3½" x 7" (8.89cm x 17.78cm) rectangles

Fabric J, cut:

(1) 12½" (31.75cm) square
(1) 6½" (16.51cm) square
(2) 3½" x 7" (8.89cm x 17.78cm) rectangles

Fabric K, cut:

(1) 12½" (31.75cm) square
(3) 6½" (16.51cm) squares
(2) 3½" x 7" (8.89cm x 17.78cm) rectangle

Fabric L, cut:

(1) 12½" (31.75cm) square
(3) 6½" (16.51cm) squares
(4) 3½" x 7" (8.89cm x 17.78cm) rectangles

Fabric M, cut:

(9) 2½" x WOF (6.35cm x WOF) strips; set aside for the binding.
(1) 12½" (31.75cm) square
(2) 6½" (16.51cm) squares
(2) 3½" x 7" (8.89cm x 17.78cm) rectangles

Fabric N, cut:

(1) 12½" (31.75cm) square
(4) 6½" (16.51cm) squares
(2) 3½" x 7" (8.89cm x 17.78cm) rectangles

Fabric O, cut:

(1) 12½" (31.75cm) square
(4) 6½" (16.51cm) squares

Fabric P, cut:

(3) 6½" (16.51cm) squares
(2) 3½" x 7" (8.89cm x 17.78cm) rectangles

Fabric Q, cut:

(1) 18½" (46.99cm) square
(1) 12½" (31.75cm) square
(5) 6½" (16.51cm) squares

Fabric R, cut:

(1) 12½" (31.75cm) square
(2) 6½" (16.51cm) squares
(2) 3½" x 7" (8.89cm x 17.78cm) rectangles

Fabric S, cut:

(1) 12½" (31.75cm) square
(1) 6½" (16.51cm) square
(6) 3½" x 7" (8.89cm x 17.78cm) rectangle

Fabric T, cut:

(1) 18½" (46.99cm) square
(1) 6½" (16.51cm) square
(2) 3½" x 7" (8.89cm x 17.78cm) rectangles

Fabric U, cut:

(1) 12½" (31.75cm) square
(3) 6½" (16.51cm) squares
(2) 3½" x 7" (8.89cm x 17.78cm) rectangles

Fabric V, cut:

(2) 6½" (16.51cm) squares
(2) 3½" x 7" (8.89cm x 17.78cm) rectangles

Fabric W, cut:

(1) 12½" (31.75cm) square
(2) 6½" (16.51cm) squares
(2) 3½" x 7" (8.89cm x 17.78cm) rectangles

Fabric X, cut:

(1) 12½" (31.75cm) square
(3) 6½" (16.51cm) squares
(2) 3½" x 7" (8.89cm x 17.78cm) rectangles



Sewing Instructions

All seam allowances are $\frac{1}{4}$ " (.64cm) wide unless otherwise noted. Place all pieces right sides together for sewing.

Four-patch Units

1. Sew a $3\frac{1}{2}$ " x 7" (8.89cm x 17.78cm) **Fabric B** strip to a $3\frac{1}{2}$ " x 7" (8.89cm x 17.78cm) **Fabric N** strip and press the seam allowances toward the darker fabric in the strip set. From the strip set, cut (2) $3\frac{1}{2}$ " x $6\frac{1}{2}$ " (8.89cm x 16.51cm) two-patch units (**Fig. 1**).



2. Arrange 2 units from step 2 as shown and sew together to create a Four-patch unit. Press the seam allowances in one direction (**Fig. 2**). Repeat steps 1-2 to create one more matching Four-patch unit. The units should measure $6\frac{1}{2}$ " (16.51cm) square.



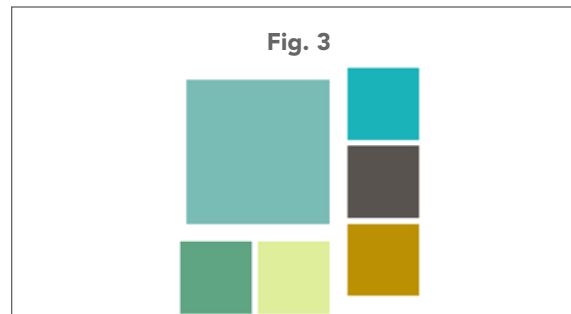
3. Using strips of the fabric pairs listed below, repeat steps 1 and 2 ten more times to make a total of (22) $6\frac{1}{2}$ " (16.51cm) square 4-patch units. There will be two blocks each, of each of the fabric pairs.

Fabric C and Fabric T	Fabric J and Fabric U
Fabric E and Fabric L	Fabric K and Fabric S
Fabric H and Fabric R	Fabric L and Fabric M
Fabric I and Fabric S	Fabric P and Fabric W
Fabric I and Fabric X	Fabric S and Fabric V

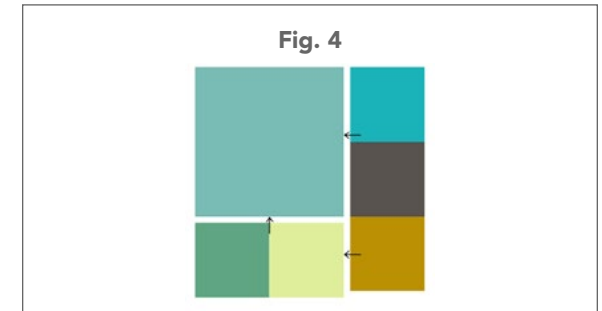
Block Assembly

Note: Each of the $18\frac{1}{2}$ " (46.99cm) pieced blocks requires (1) $12\frac{1}{2}$ " (31.75cm) square plus an assortment of (5) $6\frac{1}{2}$ " (16.51cm) squares and Four-patch units. The combination of unpieced squares and Four-patch units varies from block to block. For that reason, it is essential to refer to the labeled blocks in the **Quilt Layout** on page 5 to duplicate the use and placement of the $6\frac{1}{2}$ " (16.51cm) unpieced squares and Four-patch units.

4. Following the **Quilt Layout** on page 5 block by block, arrange (1) $12\frac{1}{2}$ " (31.75cm) square with the $6\frac{1}{2}$ " (16.51cm) squares and four-patch units required for the block you are making in the configuration shown in **Fig. 3**.



5. To assemble the block, sew together the two units at the lower edge of the $12\frac{1}{2}$ " (31.75cm) square to make a $6\frac{1}{2}$ " x $12\frac{1}{2}$ " (15.51cm x 31.75cm) unit. Press the seam allowances in one direction. Sew the completed unit to the lower edge of the $12\frac{1}{2}$ " (31.75cm) square and press the seam allowances toward the large square.
6. Sew together the 3 units in the right-hand column and press the seam allowances away from any four-patch units in the completed strip. Sew to the completed unit from step 5 and press the seam allowances toward the large square **Fig. 4**.



7. Repeat steps 4-6 to make the 15 pieced blocks in the configurations shown in the **Quilt Layout**.

Quilt Top Assembly

8. Arrange the completed blocks with the $18\frac{1}{2}$ " (46.99cm) squares following the **Quilt Layout** on page 5.
9. Sew blocks together in horizontal rows and press the seam allowances in opposite directions from row to row so the seamlines will nest and match when you sew the rows together.
10. Sew the rows together to complete the quilt top. Press all seam allowances toward the bottom edge of the quilt top.



Quilt Finishing

11. Make an 80" x 98" (203.20cm x 248.92cm) backing panel. Press the backing and the quilt top and trim any stray threads on the back of the quilt.
12. Layer the backing with the batting and the quilt top and baste the layers together. Quilt as desired and trim the batting and backing even with the quilt-top edges.
13. Using diagonal seams, sew the **Fabric M** binding strips together to make one long strip. Fold the strip in half lengthwise with wrong sides together and press.
14. Sew the binding to the quilt top with all raw edges even, mitering the corners as you reach them. Turn the binding to the back of the quilt and hand-stitch in place.

Quilt Layout

