



# Data Center Product Family Guide

Your fast lane to  
PRIMERGY,  
PRIMEQUEST Server,  
ETERNUS Storage  
and PRIMEFLEX  
Integrated Systems



Windows Server 2022: Be cloud-ready with hybrid.

# Contents

1. [Servers for a data-driven world](#)
2. [Fujitsu x86 Server](#)
3. [PRIMERGY TX Tower Server](#)
4. [PRIMERGY RX Rack Server](#)
5. [PRIMERGY CX Multi-Node Server](#)
6. [PRIMERGY GX Workload-Optimized Server](#)
7. [Fujitsu PRIMEFLEX Integrated System](#)
8. [Data & Storage](#)
9. [ETERNUS Storage](#)
10. [ETERNUS SF: Flexible data management](#)
11. [High performance partnership:  
Fujitsu & NetApp](#)
12. [Software-defined storage made easy](#)
13. [Fujitsu Software Infrastructure Manager](#)
14. [Modernize with Windows Server 2022](#)



# Servers for the data-driven world

## Fujitsu x86 Servers

Rely on our servers for quality, efficiency, agility, and seamless integration. Experience uninterrupted operations, accelerated workloads, and strategic advantages for your business.



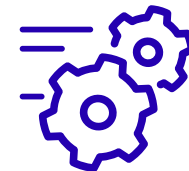
**Quality**



**Efficiency**



**Agility**



**Integration**

# Fujitsu x86 Server

## The right computing solution for every purpose

Fujitsu server systems provide the most powerful and flexible data center solutions for companies of all sizes, across all industries and for any type of workload. This includes expandable tower servers, versatile rack-mount servers and density-optimized multi-node servers as well as GPU servers. They offer compelling business-proven quality with a wide range of innovations, top efficiency that cuts operational costs and complexity, and they provide more agility in daily operations in order to turn IT into a business advantage more quickly.

Consistent management  
across server, storage, and  
networking



Cloud and Technical Computing

GenAI

Core Business

Large databases

Graphics and HPC

Office environments

VDI

SMB's

Edge

Branches

Demanding Apps

SAP S/4HANA

# PRIMERGY TX Tower Server



PRIMERGY tower servers deliver **rock-solid, efficient business value** and are the **ideal** choice for small and medium-sized businesses and branch operations.

They're also super **easy** to run, so you don't need a team of techies to keep your IT running the way it should.

In addition, the right-sized tower portfolio is **silent** enough to run in the office, even on your desk. And if you want to change your setup later, it's good to know that almost all PRIMERGY TX servers can also be **rack-mounted**.

# PRIMERGY TX Tower Server

## Products

### TX1310 M5



Type	Specifications	Processor	Memory	Storage
Mono	Essential workloads 4 PCI slots/ up to 4 x HDDs 1 x standard power supply	Intel® Xeon® E-2300, Pentium®	8 - 128 GB 4 DIMM DDR4	4 x 3.5" SATA

### TX1320 M6



Mono	Ultra-compact 4x PCIe 5.0/4.0 slots (2x PCIe 5.0) 1 x standard, 1 x hot-plug, 2 x hot-plug redundant power supply	Intel® Xeon® E-2400, Pentium®	16 - 128 GB 4 UDIMM DDR5	2x 3.5" non hot-plug or 8x 2.5" hot-plug SAS/SATA
------	---	----------------------------------	-----------------------------	---

### TX1330 M6



Mono	Highly expandable 4x PCIe 5.0/4.0 slots (2x PCIe 5.0) 1 x standard, 1 x hot-plug, 2 x hot-plug redundant power supply (depending on Model)	Intel® Xeon® E-2400, Pentium®	16 - 128 GB 4 UDIMM DDR5	12 x 3.5" SATA/SAS or 24 x 2.5" SATA/ SAS
------	--	----------------------------------	-----------------------------	---

### TX2550 M7



Dual	High workload versatility 10 PCI slots/ up to 32 x HDDs/ SSDs 1 x non hot-plug, 2 x hot-plug power supply for redundancy	2x 4 <sup>th</sup> and 5 <sup>th</sup> Gen. Intel® Xeon® scalable processors	16 GB - 4 TB 12 DIMM DDR5	12 x 3.5" SATA/SAS or 32 x 2.5" SATA/SAS
------	--	--	------------------------------	---

# PRIMERGY RX Rack Server



PRIMERGY rack servers are **versatile, rack-optimized** servers that deliver **best-in-class performance** and **energy efficiency**.

You can rely on these servers as the **backbone of your IT operations** and easily scale them as you grow.

In addition, the PRIMERGY rack server portfolio is **performance optimized** for multi-application workloads to significantly increase the **efficiency** of IT operations and enable IT to respond more quickly to business needs of any size.

# PRIMERGY RX Rack Server

## Products

### RX1330 M6



Mono

Ideal performance & cost mix

1U  
1x standard power supply  
1x or 2x hot-plug power supply

Intel® Xeon® E-2400, Pentium®

16 GB - 128 GB  
4 UDIMM DDR5

4/8 x 2.5" hot-plug SATA/SAS or 4x 3.5" hot-plug or 10 x 2.5" hot-plug SATA/SAS

### RX1440 M2



Mono

Powerful compact server

1U  
3x HHHL PCIe slot + 2x OCPv3  
2x FHHL PCIe slot + 2x OCPv3

1x AMD EPYC™ 9004 series processor

16 GB - 6 TB  
4 DIMM DDR4

Up to 10x 2.5-inch SATA/SAS/NVMe upgrade kit + 3x or 2x 2.5-inch rear bays

### RX2530 M7



Dual

Max. performance

1U / high  
4 x PCIe 5.0 slots, up to 32 x SAS/SATA/NVMe/EDSFF

1 - 2x 4<sup>th</sup> and 5<sup>th</sup> Gen. Intel® Xeon® scalable processors

8 GB - 10 TB  
32 DIMM DDR5

4x 3.5" SAS/SATA/ or 8x/10x 2.5" SAS/SATA/NVMe

### RX2450 M2



Dual

Performance & security

2U / 6x PCIe slot + 1x OCPv3 slot  
4x PCIe slot(LP) + 4x PCIe slot(FH) + 1x OCPv3 slot

2x AMD EPYC™ 9004 series processors

16 GB - 6 TB  
24 DIMM DDR5

6x 2.5-inch hot-plug SAS/SATA HDD/SSD rear option or 4x 2.5-inch hot-plug PCIe SSD via retimer or 4x 2.5-inch hot-plug PCIe SSD via 1x EPxxx NVMe



# PRIMERGY RX Rack Server

## Products

### RX2540 M7



Dual

Max.  
performance

2U / very high scalability  
8 x PCIe 5.0 slots, up to 28 x HDDs/SSDs

1 - 2x 4<sup>th</sup> and 5<sup>th</sup> Gen.  
Intel® Xeon® scalable  
processors

8 GB - 12 TB  
48 DIMM DDR5

12x 3.5" SAS/SATA  
or 24x 2.5" SAS/  
SATA/NVMe

### RX4770 M7



Quad

Max. memory  
expansion

3U/  
up to 11 PCIe 5.0 slots, up to 24 x 2.5" SAS/SATA/NVMe

2 or 4x 4<sup>th</sup> Intel® Xeon®  
processors

16 GB - 18 TB  
48 DIMM DDR5

16 x 2.5" hot-plug  
24 x 2.5" SAS/  
SATA/NVMe

### RX8770 M7



Octo

High-end back-  
end solution

6U/  
up to 24 PCIe 5.0 and 4.0 slots, up to 24 x 2.5" SAS/SATA/  
NVMe

4 or 8x 4<sup>th</sup> Intel® Xeon®  
processor

128 GB - 32 TB  
128 DIMM DDR5

24 x 2.5" SAS/SATA/  
NVMe

Type	Specifications	Processor	Memory	Storage
------	----------------	-----------	--------	---------

# PRIMERGY CX Multi-Node Server



PRIMERGY CX multi-node systems are the ideal foundation for **cloud, hyper-converged** and **high performance** computing solutions.

They provide data centers and branch offices with **massive computing power** while delivering the **best economics** in terms of server density, power consumption, thermal optimization and lower total cost of ownership.

# PRIMERGY CX Multi-Node Server

## Products

Use cases      Specifications      Processor      Memory      Details

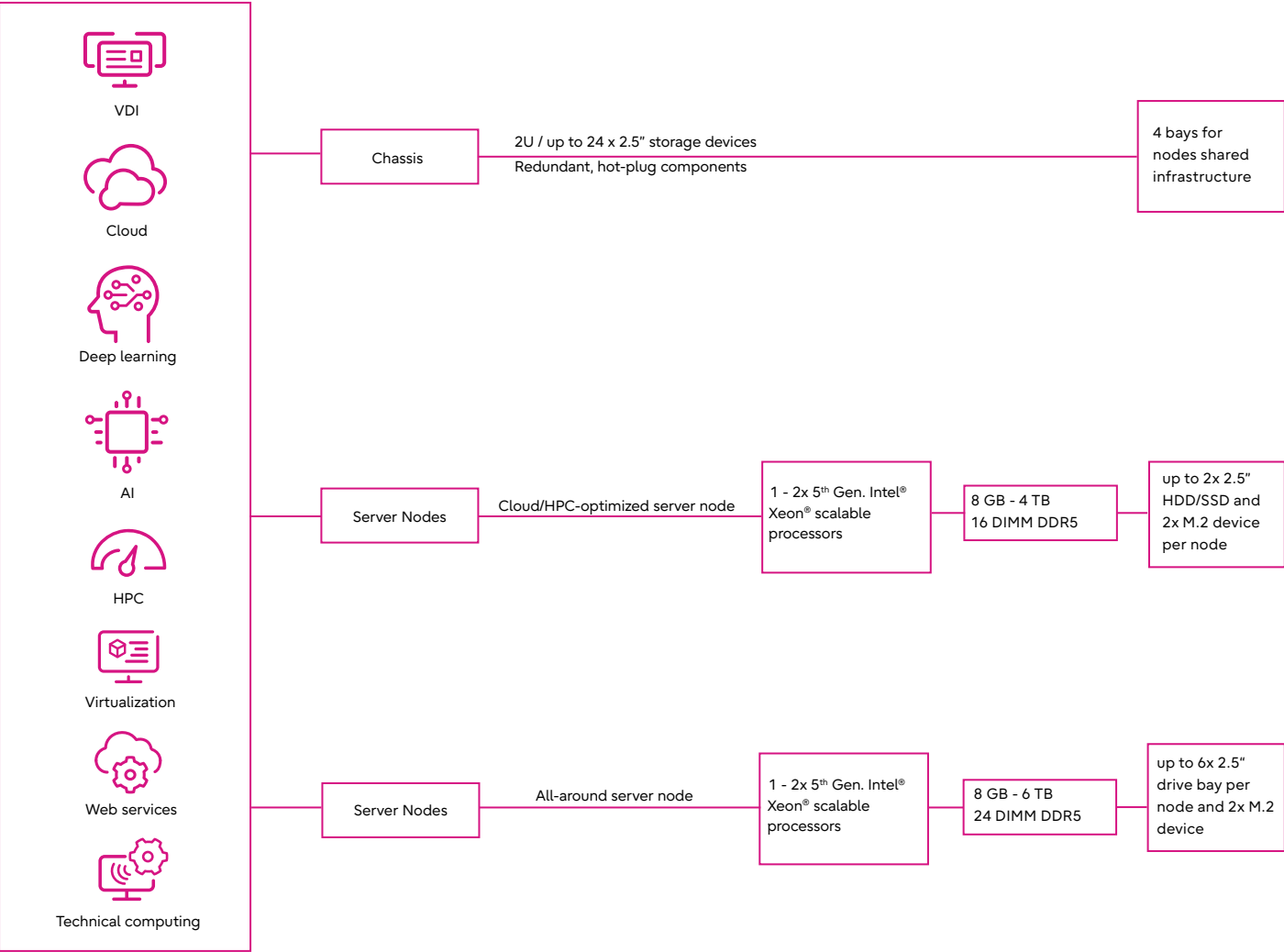
CX400 M7



CX2550 M7



CX2560 M7





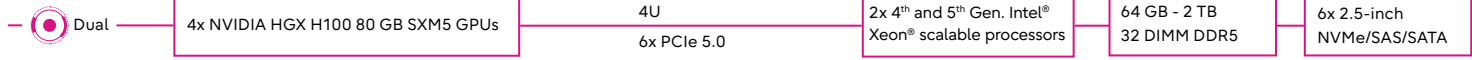
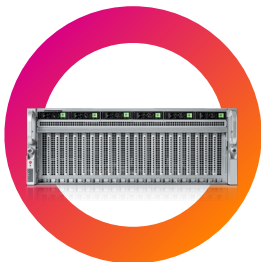
# PRIMERGY GX Workload-Optimized Server

PRIMERGY GX servers are optimized for GPU performance and offer the **reliability** and **cost-effectiveness** of our PRIMERGY line to best suit your individual requirements.

There is no **need to compromise** as GX servers are designed to excel in single/multi-GPU accelerated data-driven use cases such as artificial intelligence - especially Generative AI with LLM, data science and analytics, VDI and graphics, as well as future high performance computing workloads.

Type	Specifications	Processor	Memory	Storage
------	----------------	-----------	--------	---------

**GX2560 M7**



# Fujitsu PRIMEFLEX Integrated System

Fast track to a  
**data-driven enterprise**

Simple, fast, minimized risk and  
reduced cost



# Fujitsu PRIMEFLEX Integrated System



Building a data-driven enterprise is a complex process that requires a solid data architecture foundation.

This foundation enables companies to scale and adapt quickly. Fujitsu Integrated System PRIMEFLEX offers a portfolio of holistic, modern infrastructure offerings that are predefined, pre-integrated, and pre-tested for easy and risk-free deployment, as well as increased operational efficiency.

The portfolio comprises converged, hyper-converged, and hybrid IT infrastructure solutions that can be easily tailored to meet customer-specific needs. This simplifies operation and maintenance, with end-to-end solution support from a single point of contact. Deployment and integration services also ensure seamless integration into existing operations.

# Fujitsu PRIMEFLEX Integrated System

## Fast track to a data-driven enterprise

### Virtualization and cloud

#### PRIMEFLEX for VMware vSphere

Converged infrastructure for deploying VMware vSphere-based infrastructure with external all-flash or hybrid storage from Fujitsu. It includes multiple configurations varying in size, scales from 2 up to 64 servers and can support 4,000+ VMs.

Compute: PRIMERGY RX	Software: VMware vSphere
Storage: ETERNUS DX / AF / AB / HB	Optional: VMware Horizon
Network: Juniper networks	Management: Fujitsu ISM
Optional: Broadcom FC switches	

#### PRIMEFLEX for Nutanix Enterprise Cloud

As a multi-hypervisor infrastructure, PRIMEFLEX for Nutanix Enterprise Cloud helps customers to eliminate complexity and risk in deploying a hyper-converged infrastructure based on the Nutanix Enterprise Cloud software stack.

Computing: PRIMERGY XF
Hypervisor: Choice of AHV or ESXi
Operating system: Acropolis
Management: Prism

#### PRIMEFLEX for VMware

Hyper-converged system based on VMware software-defined server and storage technology delivered by the VMware HCI software stack. The system is available in various flexible vSAN ReadyNodes configurations with pre-installed software scaling from 2 to 64 server nodes.

Compute/storage: PRIMERGY RX / CX
Software: VMware vSphere, vSAN
Optional: VMware Horizon
Management: Fujitsu ISM

#### PRIMEFLEX for Microsoft Storage Space Direct

Hyper-converged system based on Microsoft software-defined server and storage technology integrated in Windows Server Data Center. The system is available in various validated and certified configurations scaling from 2 to 16 server nodes.

Compute/storage: PRIMERGY RX
Operating System: Windows Server Data Center (Hyper-V and Storage Spaces Direct)
Management: Windows Admin Center

#### PRIMEFLEX for Microsoft Azure Stack HCI

Hyper-converged system based on Microsoft software-defined server and storage technology integrated in Microsoft's Azure Stack HCI operating system. The system is available in various validated and certified configurations scaling from 2 to 16 server nodes.

Computing/storage: PRIMERGY RX / TX
Operating System: Azure Stack HCI
Management: Windows Admin Center, Azure Cloud

# Fujitsu PRIMEFLEX Integrated System

## Fast track to a data-driven enterprise

### SAP

As an SAP Global Partner for technology and services, Fujitsu provides enterprises with end-to-end support at the application and IT infrastructure levels, to implement and run SAP systems, including strategic consulting and developing business processes further.

#### PRIMEFLEX for SAP HANA

SAP-validated infrastructure solution for the SAP HANA® software. It is based on Fujitsu PRIMERGY and PRIMEQUEST servers optimized for in-memory technology. The complementary on-site services ensure fast and non disruptive implementation and operation at the customer site.

Computing: PRIMERGY and PRIMEQUEST  
Storage: ETERNUS / NetApp / TDI support (opt. for single node)  
Network: Broadcom, Cisco (multi-node only)  
Software: SUSE or Red Hat Linux; optional: VMware vSphere

#### PRIMEFLEX for SAP Landscapes

Powered by FlexFrame Orchestrator management software, the setup of infrastructures optimized for SAP applications and databases is simplified and a more effective operation enabled. The predefined, preintegrated and pretested combination of servers, storage, network connectivity and software ensure the highest quality and fast time to value.

Computing: PRIMERGY and PRIMEQUEST  
Storage: NetApp for shared image; ETERNUS / NetApp for database  
Network: Cisco  
Software: Fujitsu FlexFrame Orchestrator, SUSE Linux  
Optional: VMware vSphere, extension packs (e.g, from Public Cloud Groupe (PCG))

Helping organizations identify potential gaps across their heterogeneous database and SAP application environment using the following:

Fujitsu inspection service for SAP solutions:

With this hardware-agnostic solution, Fujitsu helps customers holistically in their data-driven intelligent enterprise journeys.

SAP process automation:

This solution helps optimize and automate SAP operations across organizations and ensures operational efficiency.

Fujitsu BestPlace:

A method for identifying optimal SAP environments that integrates customer centricity, data-driven analysis and cost optimization, while offering flexible payment options and interactive consulting services.





# Data & Storage:

## Key value for our customers

The storage area offers a well-synchronized portfolio of data-centric storage solutions from a single provider with over 50 years of experience in storage.

Fujitsu provides online storage systems, data-protection solutions and tape libraries that enable customers to flexibly manage their growing data volumes while reducing costs.



**Storage is  
coming home**



**Embrace Disaster  
Preparedness**

# Fujitsu Storage Products

## Hybrid Storage Systems



By combining leading performance architecture with automated quality of service management, our online storage solution provides powerful features for digital growth, efficiency, and continuity.

## Software-defined Storage



Fujitsu's Software-Defined Storage (SDS) solutions are designed to manage rapid data growth, support modern workloads, and provide compatibility for multi-cloud environments.

## Data-protection Appliances



Data-protection appliances from Fujitsu simplify your backup and archive infrastructure and transform your IT landscape into a genuine enabler for digital business growth, efficiency and continuity.

## Tape Storage Systems



The affordable tape systems offer impressive scalability and reliability. They meet SMB requirements, thwart cyberattacks, and are certified for market-leading backup and archiving software.

# Fujitsu Storage Products

## Online Storage Solutions



Leading performance increases system utilization and consolidation, resulting in a faster return on investment (ROI)

## SDS Solutions



Share and control data across multiple locations and between different applications to enhance business functionality.

## Data Protection Solutions



ETERNUS CS data-protection appliances radically simplify backup and archive infrastructures by aligning storage resources with business priorities.

## Tape Solutions



Highly automated, simple and remote operation without any demand for local expertise.

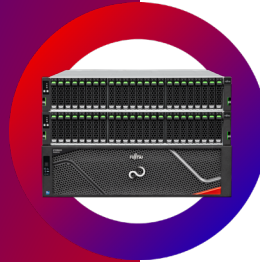
# ETERNUS Storage

## Products

DX200 S5



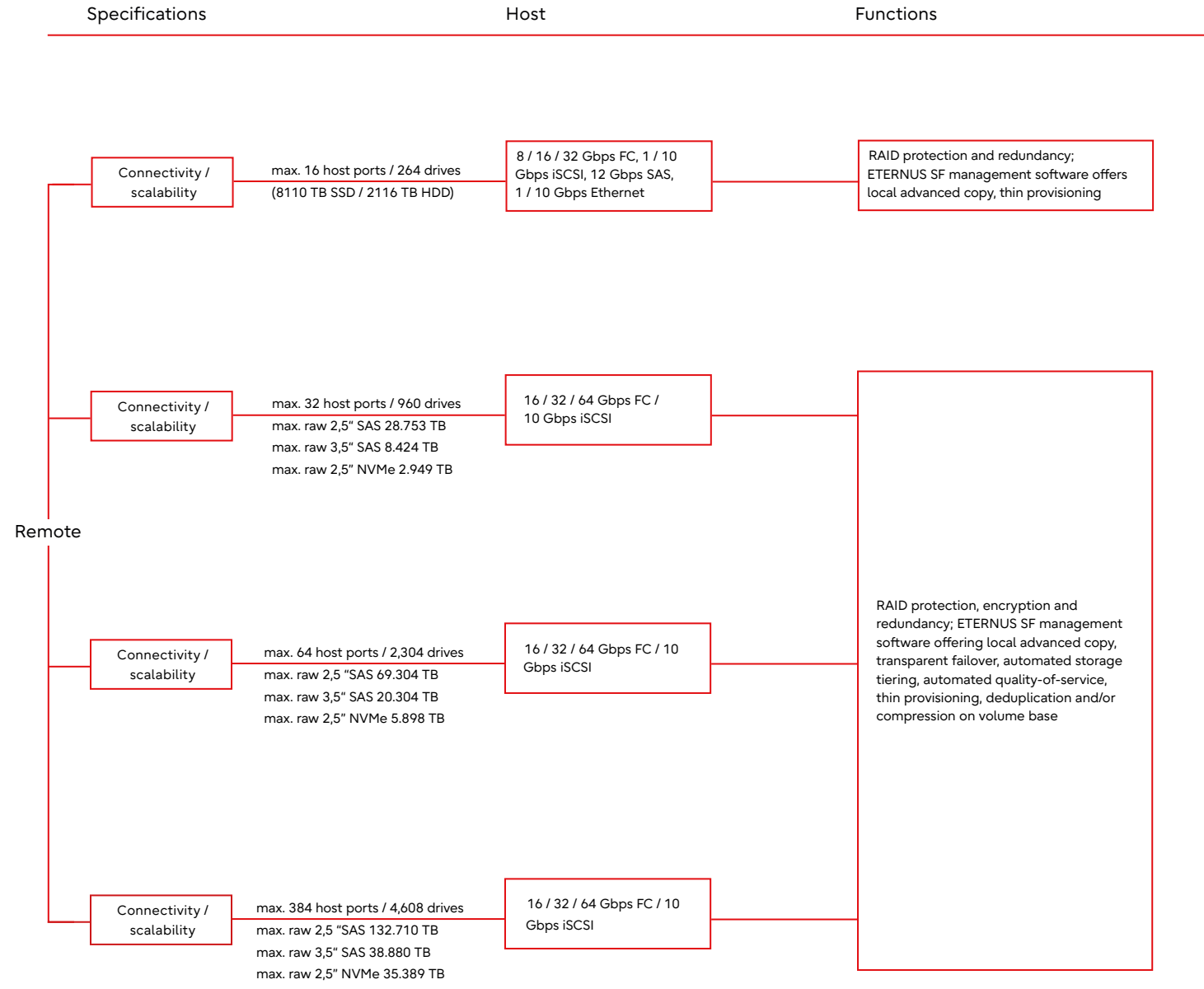
DX600 S6



DX900 S6



DX8900 S6



# ETERNUS SF: Flexible data management



The ETERNUS SF storage management software is the uniform management solution for the entire ETERNUS DX series. All essential operations for storage resource management, monitoring, reporting, tiered storage, performance management, disaster resilience and business continuity are integrated.

The uniform management for the entire storage infrastructure covers all ETERNUS DX hybrid storage systems, from entry-level through the enterprise as well as virtualized server infrastructures.



Management of all infrastructure devices based on a unified view

Visualization of the relations between storage, network and physical servers or virtual servers

Early detection and elimination of performance issues through performance monitoring

Reduced initial system infrastructure through thin provisioning.

Support for incident management, reduced storage system power consumption

Hardware investment optimization through automated storage tiering

Central management for local and remote replication, enhanced business continuity with transparent failover, automated quality-of-service management

# ETERNUS Storage

## Products

AB2100



AB3100



AB5100



AB6100



Number of drives	Host interfaces	Functions
max. 96, 1469 TB, 300k IOPS	4/8/16/32Gbps FC / 10/25Gbps iSCSI / 12Gbps SAS	<b>Performance</b> <ul style="list-style-type: none"> <li>• End-to-end NVMe</li> <li>• Automatic load balancing</li> <li>• Secondary cache</li> </ul> <b>Reliability</b> <ul style="list-style-type: none"> <li>• Encrypted drives</li> <li>• Authentic key management</li> <li>• Data guarantee</li> <li>• Data protection</li> <li>• Snapshot, mirroring and copy</li> </ul> <b>Flexibility</b> <ul style="list-style-type: none"> <li>• Storage virtualization</li> <li>• REST API</li> <li>• Cloud backup</li> <li>• Multiple drive sizes</li> </ul>
max. 264, 4687.2 TB, 670k IOPS	8/16/32Gbps FC/ 32Gbps NVMe over FC 100Gbps NVMe over InfiniBand/ 100Gbps NVMe over RoCE/ 25/10Gbps iSCSI/ 100Gbps IB iSER/ 100Gbps IB SRP	
max 120, 1836 TB, 1M IOPS	4/8/16/32Gbps FC / 32Gbps NVMe over FC / 10/25Gbps iSCSI / 100Gbps IB / 100Gbps NVMe over InfiniBand / 100Gbps NVMe over Ethernet / 12Gbps SAS	
max. 444, 7927.2 TB, 300k IOPS	8/16/32Gbps FC / 32Gbps NVMe over FC / 100Gbps NVMe over InfiniBand / 100Gbps NVMe over Ethernet	

# ETERNUS Storage

## Products

HB1110



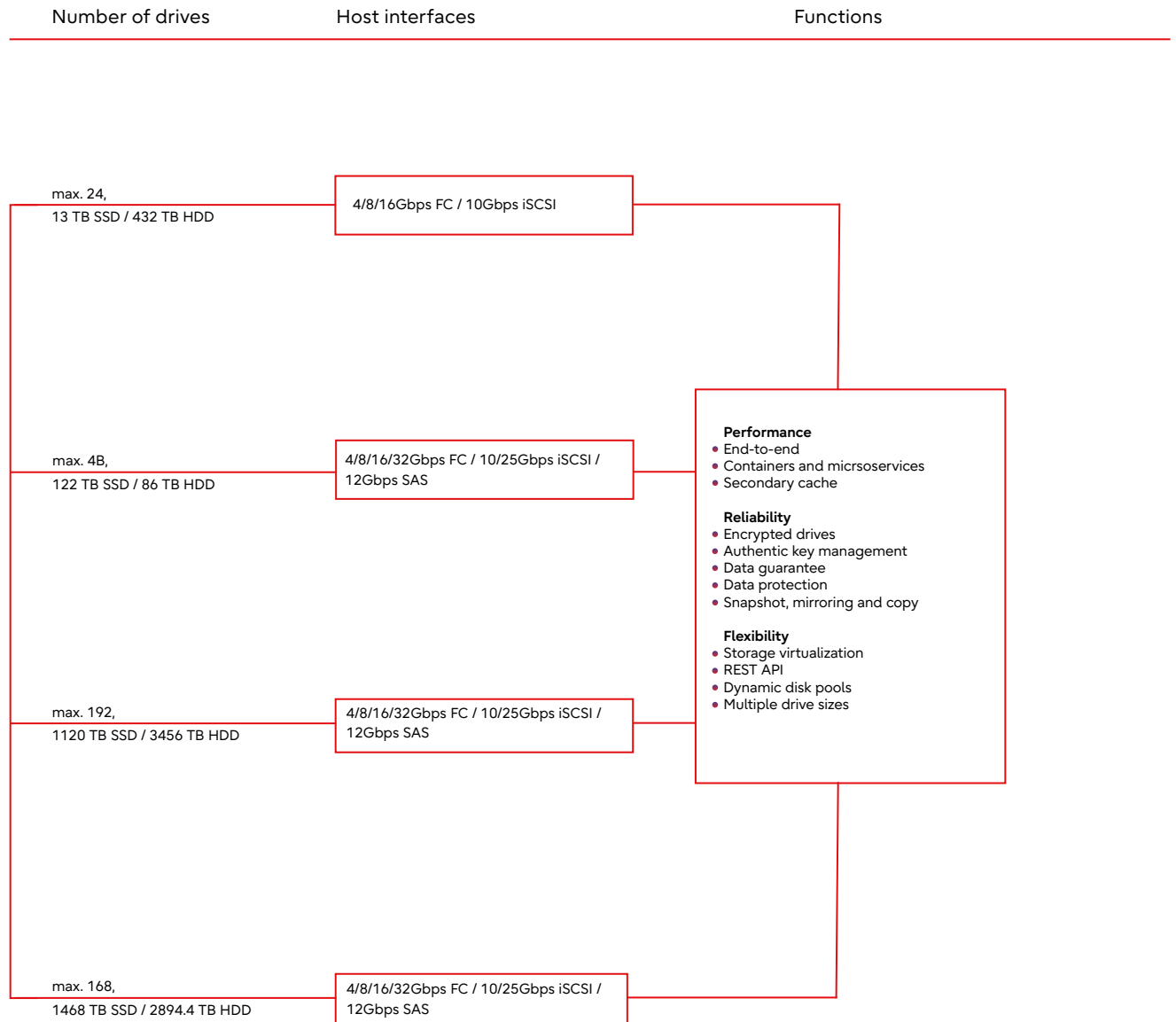
HB1200



HB2100



HB2200





# ETERNUS Storage

## Products

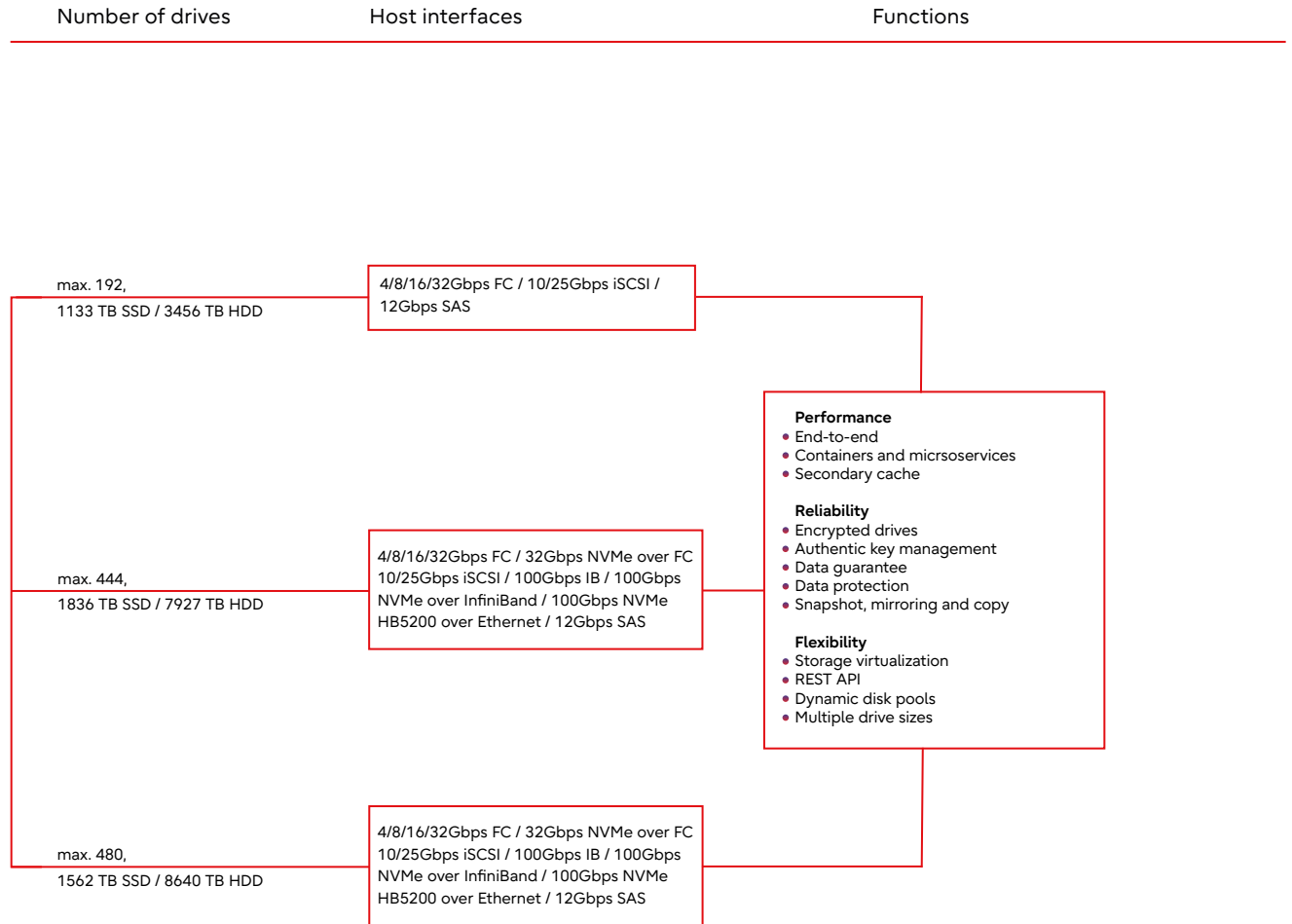
HB2300



HB5100



HB5200



# High performance partnership

Fujitsu and NetApp

## Products

AFF C190

AFF250

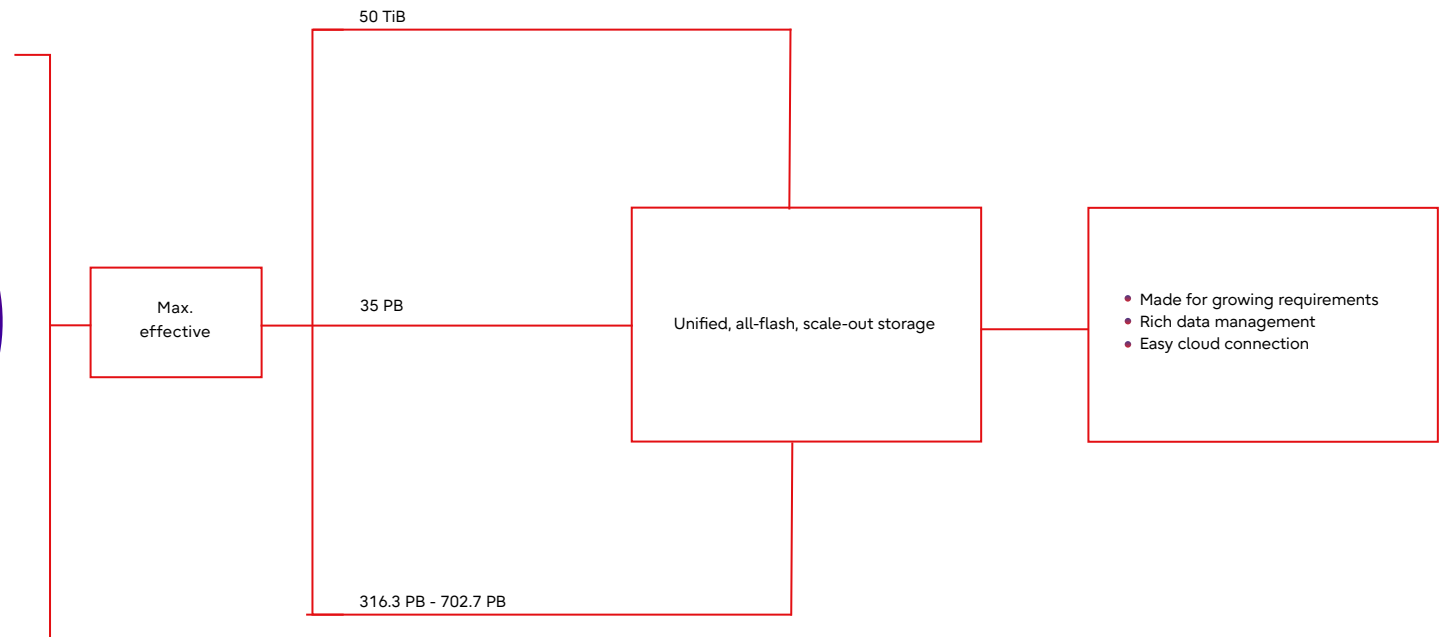


A400 / A800 / A900

Specifications

Description

Functions



# High performance partnership

Fujitsu and NetApp

## Products

FAS2750 /  
FAS2820

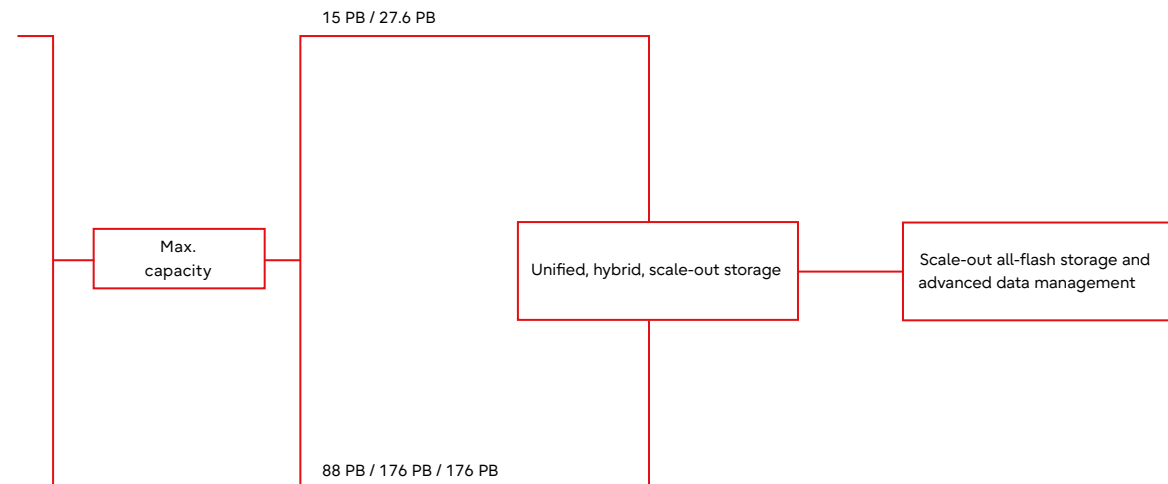


FAS8300 /  
FAS8700 /  
FAS9500

Specifications

Description

Functions



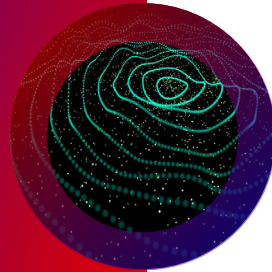
# Software-defined storage made easy

## Products

Qumulo file data platform



NetApp StorageGRID

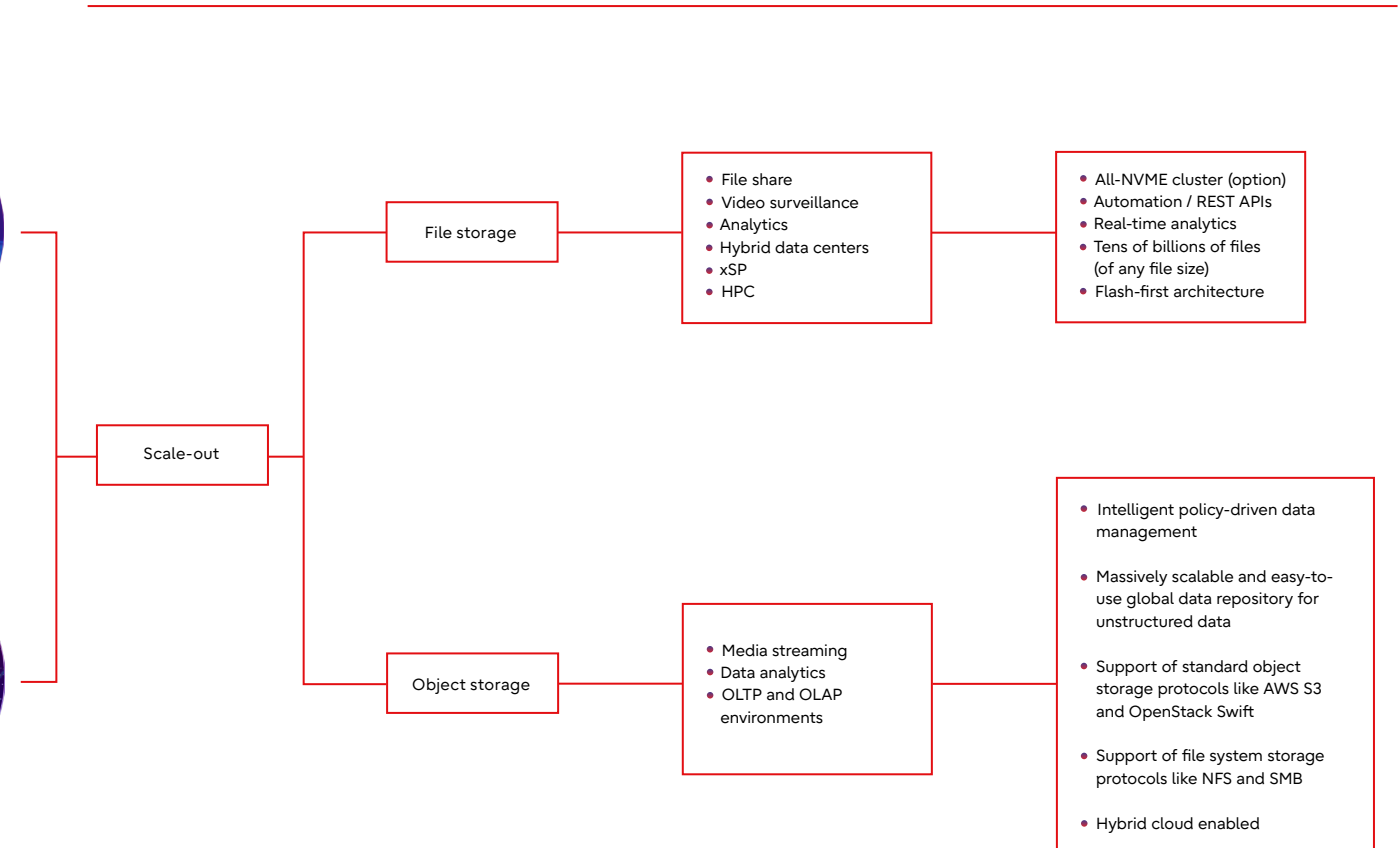


Architecture

Data access

Main use cases

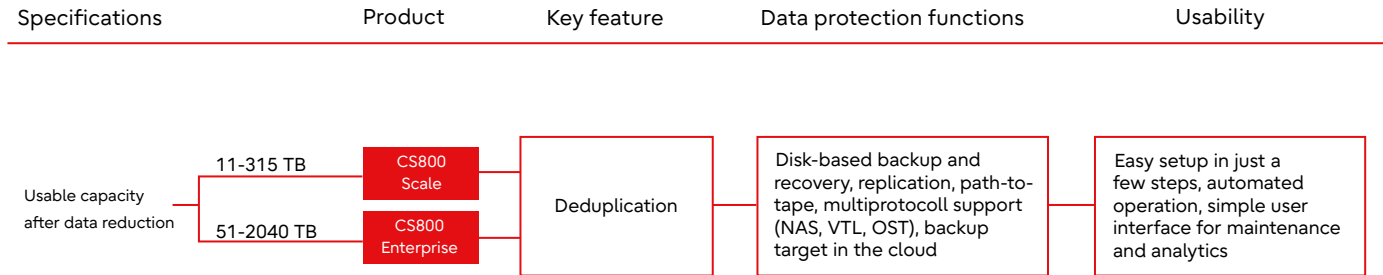
Highlights



# Data protection made easy

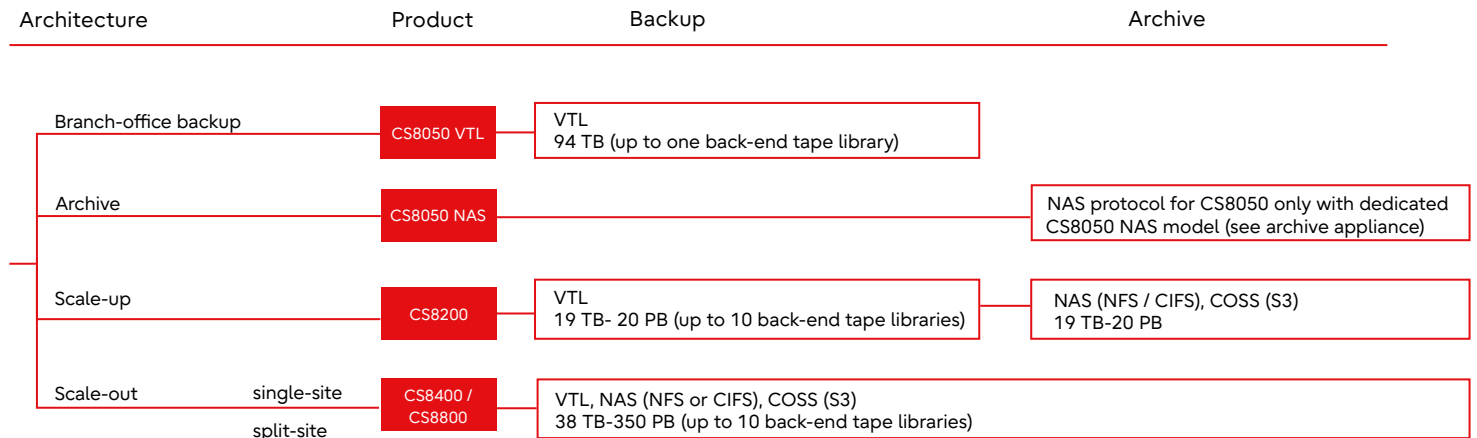
## Data protection appliances

### ETERNUS CS800 backup appliance



### ETERNUS CS8000

Central storage for backup, archive, second-tier and object data



# Data protection made easy

## Tape libraries

### ETERNUS LT tape storage systems



No. of slots / max. capacity	Product	Interface	Max. drives	Drive types
8 slots / up to 144 TB	LT20 S2	SAS or FC	1	LTO-9 / LTO-8 / LTO-7 drives
20 - 560 slots / up to 10,080 TB	LT140		42	

### QuantumScalar tape storage systems



No. of slots / max. capacity	Product	Interface	Max. drives	Drive types
25 - 400 slots / up to 7.200 TB	i3	SAS or FC	24	LTO-9 / LTO-8 / LTO-7 drives
100 - 800 slots / up to 14.400 TB	i6		24	
100 - 14.100 slots / up to 253.800 TB	i6000		192	

### i3 / i6 / i6000

# Data protection made easy

Market-leading data protection software



1

## **Commvault Data Services**

Simplifies an IT organizations, ability to manage data across its lifecycle with integrated modules for backup and recovery, archive, replication, analytics and more. Commvault HyperScale™ software is a powerful, cloud-ready solution bringing scale-out infrastructure to the Commvault data platform.

2

## **Veeam Backup & Replication**

The powerful, reliable and easy to use software reduces operational overhead with flexibility that fits your business and market-leading reliability that you can count on. It delivers dependable availability across all cloud, virtual and physical workloads with a simple, flexible and reliable solution.

3

## **Veritas**

### **NetBackup**

Simplifies the protection of your information-driven enterprise by automating, advanced technologies and standardizing operations across applications, platforms and virtual environments.

### **EnterpriseVault**

The industry's most widely deployed archiving solution, is a platform that bridges the gap between a company's legal department and IT by adding intelligence to the way organizations store, manage and discover information.

# Data protection made easy

Integrated appliances

Fujitsu reference architecture for Commvault HyperScale X Software



Usable capacity	Node type	Description	Data-protection functions
50 - 339 TB	N12	Fully-tested, easy-to-set-up solution based on Fujitsu Server PRIMERGY to protect data in physical, virtual or cloud-based data centers	Backup and recovery, deduplication, compression, encryption, archiving, application support, snapshot, replication, tape and cloud backup
151 - 678 TB	N24		

Veritas NetBackup Flex Appliance



Usable capacity	Product	Description	Data-protection functions
10 - 442 TB	NBU 5260	All-in-one backup appliance provides mid-sized-to-large environments with a customizable, self-contained solution for professional backup	Backup and recovery, deduplication, compression, encryption, archiving, application support, snapshot, replication, tape and cloud backup
132 - 2110 TB	NBU 5360		



# Holistic approach for simplifying data center management

## Fujitsu Software Infrastructure Manager (ISM)

The Fujitsu Software Infrastructure Manager (ISM) is a converged data center management solution that provides organizations with centralized control over the entire infrastructure, including servers, storage, networking, cloud management software, as well as power and cooling, all through a single user interface.



# Fujitsu Software Infrastructure Manager

Designed the way people work, ISM provides an integrated view and centralized control over heterogeneous environments.

Product highlights include:

**Converged  
management**



Simplified IT operations and consistent management across server, storage and networking

**Increased  
agility**



Intuitive software providing actionable insights leading to reduced customer response time

**Accelerated  
growth and  
innovation**



Streamlined delivery of IT services to speed the transition to hybrid cloud



# Fujitsu Software Infrastructure Manager

## Centralized, easy, clear

- Node management
- Health status monitoring and control
- Capacity / Threshold management
- Power management

## Seamless, manage uniformly

- In Enterprise management
- In vendor specific management
- Monitor third-party platforms



## Simple, experienced, efficient

- Converged management
- Auto discovery
- Virtual-IO management
- Network topology management

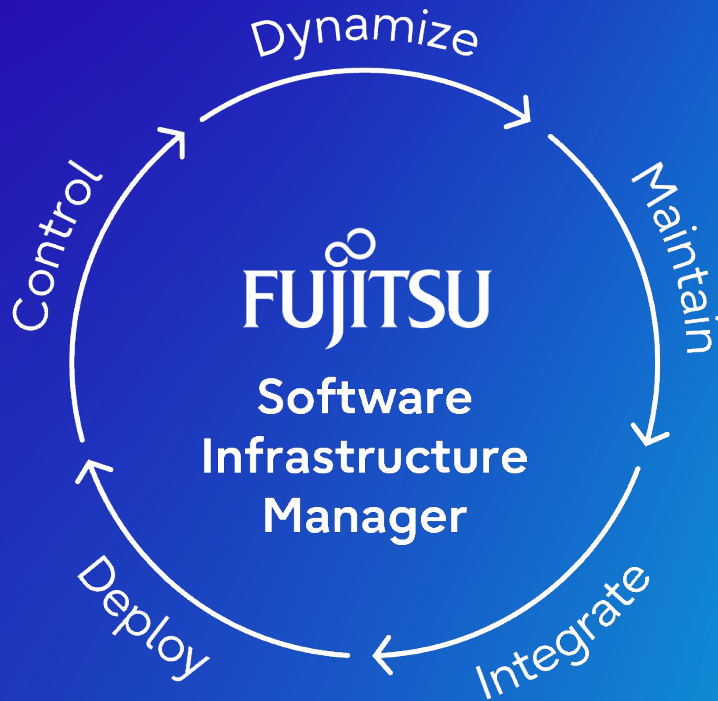
## Remote, up to date, verifiable

- Remote management
- Update management
- Logging and auditing

## Fast, comfortable, reliable

- Automate device configuration
- Mass OS installation

# The holistic approach for simplifying data center management

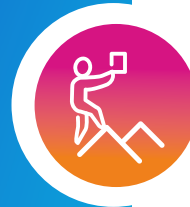


Two options to support different business requirements:



## ISM Essential Edition - Control, maintain, dynamize

- Provides essential monitoring capabilities and update functions across all supported devices, including storage and network switches
- No license costs, optional support license available



## ISM Advanced Edition - deploy, control, maintain, dynamize, integrate

- Full-featured advanced version that provides comprehensive and robust infrastructure management
- Also monitors third-party vendor devices in addition to integrating into VMware, Microsoft System Center and Ansible environments

# Fujitsu Software Infrastructure Manager

The holistic approach for simplifying data center management

Take the first step with ISM Essential by downloading it for free:

Easy upgrade path from ISM Essential to ISM Advanced!

Find out more:  
[fujitsu.com/infrastructuremanagement](https://fujitsu.com/infrastructuremanagement)



# Modernize with Windows Server 2022

The cloud-ready operating system that boosts on-premises investments with hybrid-capabilities. Transform your IT environment with the latest hardware and software technologies by upgrading to the latest Fujitsu PRIMERGY Server generation and Windows Server 2022.



- ✓ By combining the united power of Windows Server 2022 and Fujitsu PRIMERGY, businesses can elevate their security posture, tackle any workload, and take advantage of hybrid capabilities.
- ✓ Experience the benefits of cloud-ready technology and innovative solutions for a more efficient and productive organization.
- ✓ Expandable tower servers, versatile rack servers, density-optimized multinode servers as well as GPU servers optimized for AI, Data-Science, VDI, HPC and graphics.
- ✓ Windows Server 2022 enables direct business benefits—like better data analysis and enhanced security—as well as the flexibility to migrate to the cloud.

United Power  
Anywhere:

# Windows Server 2022 and Fujitsu PRIMERGY Server

## Top new features in Windows Server 2022



### Hybrid capabilities with Microsoft Azure

Achieve greater IT efficiency and cost savings by extending your data center to Microsoft Azure using a cloud-ready operating system with hybrid capabilities.



### Advanced multilayer security

Help protect your business apps and data with multilayer security capabilities like the secured-core server and enhanced secure connectivity.



### More secure remote working

Enable remote users to run applications and desktops from nearly anywhere with Remote Desktop Services, a platform that helps deliver more secure virtualized apps, remote desktop access, and simplified management.



### Modernized server infrastructure

Transform infrastructure and applications with flexible solutions like software-defined storage and networking and a modern app platform.

Published by

Fujitsu Technology Solutions GmbH

Mies-van-der-Rohe-Str. 8, D-80807 Munich

Copyright 2024 FUJITSU LIMITED

Printed in Germany

Contact: [www.fujitsu.com/global/contact](http://www.fujitsu.com/global/contact)

All rights reserved, including intellectual property rights. Technical data subject to modifications and delivery subject to availability. Any liability that the data and illustrations are complete, actual or correct is excluded. Designations may be trademarks and/or copyrights of the respective manufacturer, the use of which by third parties for their own purposes may infringe the rights of such owner. Intel, the Intel logo, the Intel Inside logo and Xeon are trademarks of Intel Corporation in the U.S. and/or other countries.