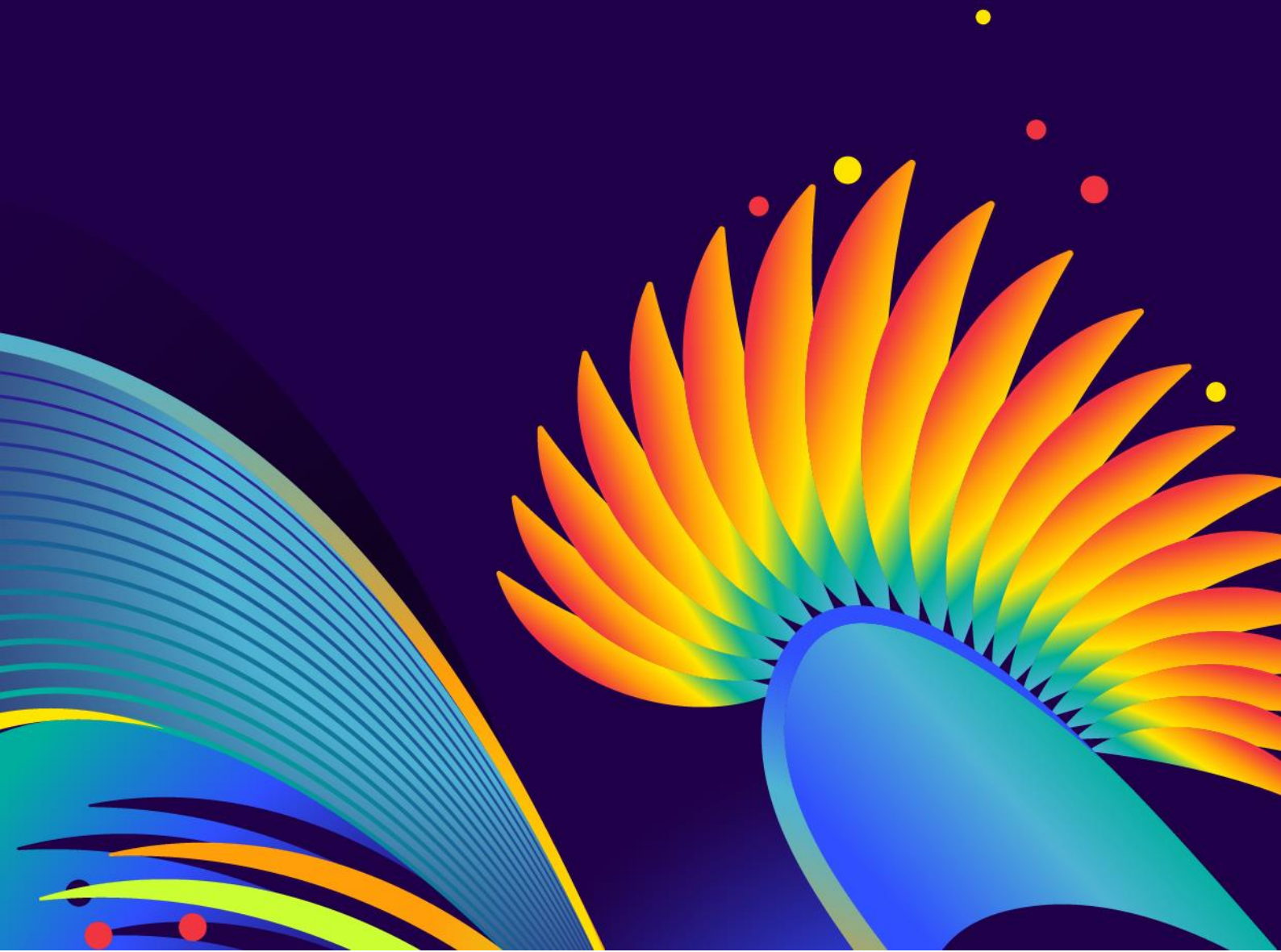




Draw Procedures for the FIFA U-20 Women's World Cup Colombia 2024™



Draw procedures for the FIFA U-20 Women’s World Cup Colombia 2024™

The Draw for the FIFA U-20 Women’s World Cup Colombia 2024™, scheduled to be held in Bogotá, Colombia on 5 June 2024, will determine how the 24 qualified teams will be divided into six groups of four teams each for the final competition.

The information below sets out the procedures for the draw.

1. SLOT ALLOCATION

The final slot allocation per confederation was approved by the FIFA Council as follows:

CONFEDERATION / HOST	NUMBER OF TEAMS	QUALIFIED TEAMS
AFC	4	Australia, Japan, Korea DPR, Korea Republic
CAF	4	Cameroon, Ghana, Morocco, Nigeria
Concacaf	4	Canada, Costa Rica, Mexico, USA
CONMEBOL	4	Argentina, Brazil, Paraguay, Venezuela
OFC	2	Fiji, New Zealand
UEFA	5	Austria, France, Germany, Netherlands, Spain
Host country	1	Colombia

2. SEEDING AND POT ALLOCATION

The 24 qualified teams will be allocated to four pots of six teams each, based on a ranking system created according to past sporting performance.

The ranking system is based on the total number of points obtained in the last five editions of the FIFA U-20 Women’s World Cup™ (three points for a win, one point for a draw and no points for a defeat), namely those held in 2022, 2018, 2016, 2014 and 2012.

The greatest importance will be given to results from the most recent edition of the FIFA U-20 Women's World Cup, followed by results in previous editions. In that regard, the ranking points earned in each edition will be progressively attributed less weight, as follows:

1. 2022: 100% of total ranking points
2. 2018: 80% of total ranking points
3. 2016: 60% of total ranking points
4. 2014: 40% of total ranking points
5. 2012: 20% of total ranking points

The ranking points will be calculated as follows:

3 points	1 point	0 points
for a win after regular time	for a draw after regular time	for a defeat after regular time
for a win after extra time	for a win after penalty shoot-out	for a defeat after extra time
	for a defeat after penalty shoot-out	

In addition, five bonus points will be awarded to each of the current champions of each confederation's relevant qualifying tournament for the FIFA U-20 Women's World Cup.

In the event that two or more teams are level on ranking points and require a "tiebreaker" to set them apart – especially when this impacts the pot to which they will be allocated – the deciding ranking factor will revert to:

- (a) the ranking point result from the most recent edition of the FIFA U-20 Women's World Cup;
- (b) the ranking point result from the next most recent edition of the FIFA U-20 Women's World Cup until a ranking priority can be established;
- (c) the ranking point result for the whole of the respective confederation from the most recent edition of the FIFA U-20 Women's World Cup until a ranking priority can be established;
- (d) the drawing of lots between the teams that remain level on ranking points.

Based on the above ranking, the top five teams, along with the host country, Colombia, will be allocated to pot 1, and the next six teams to pot 2, and so on.

The following pot allocations were made for the draw:

Pot 1	Pot 2	Pot 3	Pot 4
Colombia	Nigeria	Korea Republic	Venezuela
Spain	Brazil	Ghana	Austria
Japan	Mexico	Canada	Cameroon
France	USA	Australia	Morocco
Korea DPR	Netherlands	Paraguay	Costa Rica
Germany	New Zealand	Argentina	Fiji

3. DRAW PROCEDURES

- The four pots representing the teams will be labelled team pots 1 to 4. Each team pot will contain six balls representing the six teams from the respective pot.
- The six pots representing the groups will be labelled group pots A to F. In each group pot, there will be four balls with the group position numbers 1, 2, 3 and 4 for each respective group.
- The draw will start by drawing a team from team pot 1 and will end by drawing the last team from team pot 4. Each team pot will be completely emptied before moving on to the next team pot.
- A ball will be drawn from a team pot, followed by a ball from one of the group pots, thus determining the position to which the respective team will be allocated within the group.

4. DRAW CONSTRAINTS

- In team pot 1, as the host country, Colombia will be identified by a different coloured ball and will be assigned to position A1.
- The remaining five teams in team pot 1 will be automatically drawn into position 1 of each remaining group (in order, from group B to F), with each position 1 ball also being identified by a different colour to the other balls in the group pot.
- FIFA's general principle is to ensure, whenever possible, that no group has more than one team from the same confederation drawn into it.