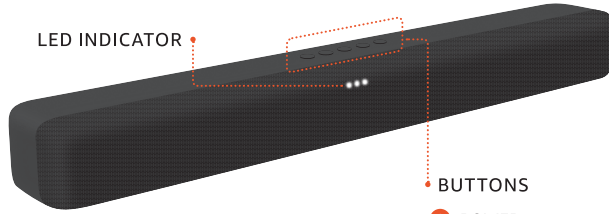


MEET YOUR FIRE TV SOUNDBAR

LED INDICATOR



BUTTONS

- POWER**
- INPUT**
HDMI ARC/Optical In/
Bluetooth/USB
- BLUETOOTH**
Hold to pair with your TV.
- VOLUME DOWN**
- VOLUME UP**

Also included:



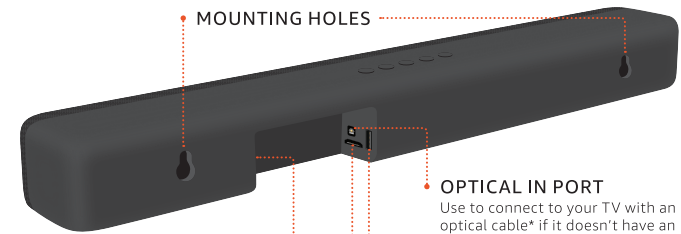
HDMI cable

Power cable

Fire TV Soundbar Remote,
2 AAA batteries (p. 3)

Wall mounting
accessories (p. 6)

BACK



MOUNTING HOLES

POWER PORT



OPTICAL IN PORT

Use to connect to your TV with an optical cable* if it doesn't have an HDMI ARC/eARC port.

*Not included

USB PORT

HDMI ARC PORT

Use with the included HDMI cable to connect to your TV's HDMI ARC/eARC port.

MEET YOUR FIRE TV SOUNDBAR REMOTE

POWER ON/OFF

PLAY/PAUSE

PREVIOUS

SURROUND SOUND

On/off

VOLUME UP & DOWN

INPUT

HDMI ARC/Optical In/
Bluetooth/USB

Also included:
2 AAA batteries



BLUETOOTH

Hold to pair a new device

NEXT

EQUALIZER

Select movie, music,
or dialogue sound modes

BASS

Low, medium, high

MUTE

Long press
Mute to silence
the voice navigation
prompts.

CONNECT TO YOUR TV



1. PLUG THE POWER CABLE INTO YOUR SOUNDBAR

Plug the included power cable into the soundbar's power port and then a power outlet.

2. CONNECT YOUR SOUNDBAR TO YOUR TV IN ONE OF THREE WAYS:

RECOMMENDED

HDMI ARC/eARC

Plug the included HDMI cable into your TV's **HDMI ARC/eARC** port and your soundbar. On the TV, make sure the HDMI CEC setting is enabled and audio settings are correctly configured.

OR

BLUETOOTH

Unplug the HDMI cable if connected. Press and hold the Bluetooth button on the soundbar. The LED will blink in discovery mode. In the TV's Bluetooth settings, select Fire TV Soundbar.

OR

OPTICAL

Plug an optical cable (sold separately) into the soundbar's optical port and then into your TV's optical port. On Fire TV: Go to Settings > Equipment Control > Manage Equipment, to set up.

Make sure: 1. Select the right input (HDMI/Optical/BT) on your soundbar using the Input button.
2. The TV's audio settings are configured correctly to output to an external source. Consult your TV's manual if needed.

POSITIONING YOUR FIRE TV SOUNDBAR

YOU CAN PLACE YOUR SOUNDBAR ON A PIECE OF FURNITURE, OR MOUNT IT ON THE WALL.

Tip: for the best sound, position the soundbar close to ear level.

MOUNTING YOUR FIRE TV SOUNDBAR ON THE WALL

INCLUDED FOR WALL MOUNTING



Paper wall mounting template
Sized to the device

2x anchors


2x screws




2x wall mounting rings


TOOLS YOU'LL NEED

Not included in the box

 Electric drill
• 5/16" (or 8 mm) drill bit
• Phillips #2 driver bit

 Hammer

 Level or level app

 Wall-safe tape

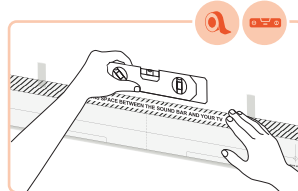
Note: Included screws and anchors are recommended for drywall. If using the anchors, do not drill into studs.

Caution: Don't drill holes into electrical wiring or piping.

MOUNTING YOUR FIRE TV SOUNDBAR ON THE WALL

1 LEVEL AND TAPE TEMPLATE TO THE WALL

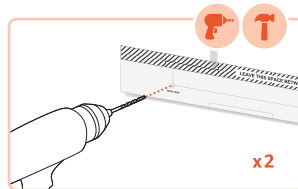
Using a level or level app, tape the template to the wall under your TV.



2 DRILL HOLES AND INSTALL ANCHORS

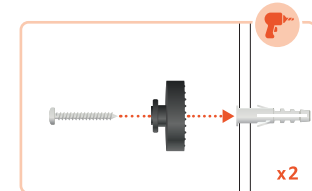
If you are using the anchors, drill holes where the template says **MARK HERE**.

After drilling both holes, remove the template and tap the anchors into the holes.



3 SCREW IN THE WALL MOUNTING RINGS

Insert the included screws into the wall mounting rings and screw them into the anchors.



4 MOUNT THE SOUNDBAR

Attach the soundbar to the wall mounting rings, making sure that the soundbar is locked into place.

