

SECRETARIAT FOR CATHOLIC HUMAN SERVICES: CSS & NDS 2021 ANNUAL REPORT

JULY 2021 - JUNE 2022

CATHOLIC SOCIAL SERVICES BOARD OF DIRECTORS

OFFICERS

President: Most Rev. John J. McIntyre – Auxiliary Bishop, Archdiocese of Philadelphia
Executive Vice President: James Amato, MSW – Secretary for Catholic Human Services
Secretary: Yemele Ayala – Sr. Director of School Support Services, Aspira Inc. of PA
Treasurer: Maura B. Kelly, CPA – Chief Financial Officer, Pinnacle Realty Services

MEMBERS

Matthew B. Aaron – President & CEO, Special Olympics of Pennsylvania, Inc.
Nancy Anderson – Director (retired) Risk Mgmt. & Compliance, Nazareth Hospital
Robert F. Byrne – Director of Operations, Philadelphia Interfaith Hospitality Network
Daniel Connelly – Director, Econsult Solutions, Inc.
Ruben David – Project Director for Public Safety Capital Program of Philadelphia (retired Civil Engineer)
Jacqueline J. Delaney – Chair, Board of Directors, Malvern Retreat House
John Delaney, Esq. – Director of Investigations, Archdiocese of Philadelphia
Donald Friel – Executive Vice President, Holy Redeemer Health System
Rev. Thomas Higgins – Pastor, Holy Innocents Church (Philadelphia)
Gertrude (Trudy) Jackson – Assistant Vice President, Cigna Insurance Company of Philadelphia (retired)
Dennis T. Kennedy, Ph.D. – Associate Professor, Business Administration, LaSalle University
Lorraine M. Knight – Director (retired), Nutritional Development Services
Robert J. Macri – Managing Director (retired), J.P. Morgan Chase & Co.
Susan McCrary – Nursing Home Administrator, St. Ignatius Nursing Home
John W. Meacham, CEO/Administrator (retired), St. Ignatius Nursing & Rehab Center
Mark P. Nessel Senior Vice President/COO, Virtua Our Lady of Lourdes Hospital
Sr. Kathleen Schipani, IHM – Director, Office for Persons with Disabilities & Deaf Apostolate
Thomas P. Sholes – Chief Strategy Officer, BNY Mellon / Pershing
Patricia R. Urrunaga – Senior Manager Controllers Team, Pfizer Inc./Wyeth Pharmaceuticals
Martha Wilbur – Hospitality Coordinator, AbbeyFest Ministries



THANK YOU FOR JOINING **CSS** AND **NDS** IN SERVING FAMILIES,
CHILDREN, AND OTHERS IN NEED THROUGH **FAITH-FILLED**
COMPASSION ROOTED IN THE CATHOLIC FAITH.

NDS BOARD OF DIRECTORS

OFFICERS

President, (Ex officio): Rev. Msgr. Daniel J. Sullivan - Vicar for Retired and Infirm Priests, Archdiocese of Philadelphia
Vice-President, (Ex officio): Mr. James Amato - Secretary for Catholic Human Services, Archdiocese of Philadelphia
Secretary: Mrs. Suzanne Santoro Robinson - Director of Alumnae, Sacred Heart Academy
Treasurer: Ms. Rosalind W. Sutch, CPA, MT- Partner & Chief Growth Officer, Drucker & Scaccetti, P.C.

MEMBERS

Mr. Sean-Tamba Matthew, Esq. – Shareholder, Stevens & Lee
Mr. Keith T. Morris, RJFS, MCMG – Partner, Managing Director, Morris Capital Management Group
Dr. Stephen J. Porth – Professor, Haub School of Business, St. Joseph's University
Mr. Thomas P. Forkin, Esq. – Deputy Director, PPR, City of Philadelphia
Ms. Erica S. Wilson, Esq. – Partner, Troutman Pepper
Mr. Richard Van Fossen, Jr. – Fundraising, Cabrini Asset Management
Mr. Raymond Tarnowski – Retired President, Philadelphia Warehousing & Cold Storage

United in our common call as children
of one God and Father to serve our
brothers and sisters in need and build
a just and compassionate society.



LIKE US

NutritionalDevelopmentServices.org
215.895.3470

CSSPhiladelphia.org
215.587.3555

Catholic Human Services
Archdiocese Of Philadelphia
222 North 17th Street
Philadelphia, Pa 19103

NONPROFIT ORG
US Postage Paid
Philadelphia, PA
Permit No. 7535

Catholic Social Services &
Nutritional Development Services
2022 Annual Report



LETTER FROM JAMES AMATO, MSW, SECRETARY FOR CATHOLIC HUMAN SERVICES

Dear Friends,

Our fiscal year 2022 annual report highlights the collective impact of Catholic Social Services (CSS) and Nutritional Development Services (NDS)-both vital mission programs under the umbrella of Catholic Human Services of the Archdiocese of Philadelphia. Our programs positively impacted the lives of 608,000 people who turned to us for help and hope. Our service delivery was still significantly affected by the pandemic. We continued to see increases in direct assistance services, involving food, and housing support, as well as impact on our residential programs for at risk youth, the intellectually disabled, seniors and the homeless due to the more limited interpersonal engagement.

Our longstanding partnerships with government and local foundations continue to thrive as we worked collaboratively to respond to changing needs of individuals, families and local communities. Further, our faithful and faith-filled supporters of our services, our donors, continue to inspire all our staff in driving quality services and outcomes for those we are privileged to serve. Your generosity enables us to creatively respond to so many with varied needs.

At the core of our Catholic faith is the call to missionary discipleship involving a commitment to be witnesses to the Gospel. That witness in Catholic Human Services is completed through prayer and service involving daily involvement and interaction with those in need. That witness also involves us acting as faithful stewards of your trust and donations.

I am deeply appreciative for your prayers and ongoing support. Your generosity is a core component enabling us to provide quality services since 1797 throughout Philadelphia and the suburban counties.

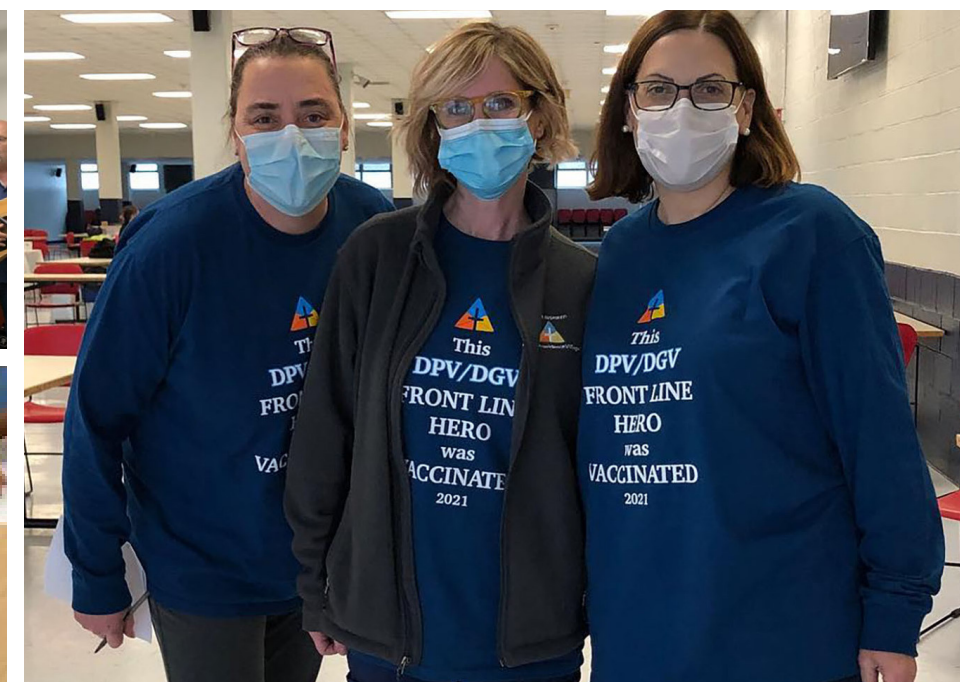
May we continue to strive each day with the compassionate love and charitable spirit of Christ in all that we do with and for those we serve. //

Sincerely,



JAMES AMATO, MSW
SECRETARY FOR CATHOLIC HUMAN SERVICES
ARCHDIOCESE OF PHILADELPHIA

THANK YOU FOR HELPING US IMPACT THE LIVES OF HUNDREDS OF THOUSANDS OF PEOPLE. WE COULDN'T DO IT WITHOUT YOU.



CATHOLIC SOCIAL SERVICES CORPORATIONS

- Catholic Charities of the Archdiocese of Philadelphia
 - Catholic Clinical Consultants
 - Catholic Community Services (Community Umbrella Agency)
 - Catholic Housing and Community Services
 - The Communities of Don Guanella and Divine Providence
 - St. Edmond's Home for Children
 - St. Francis & St. Vincent Homes for Children
 - St. Gabriel's System (ceased operations 12/1/20)
 - Saint John's Hospice
- The following fund operations of the above corporations:
- St. Joseph Catholic Home for Children
 - St. Joseph House
 - St. Vincent's Home, Tacony
 - St. Vincent's Services for Women & Children

NUTRITIONAL DEVELOPMENT SERVICES PROGRAMS

- National School Lunch and Breakfast Program
- Residential Child Care Food Program
- Special Milk Program
- Child and Adult Care Meal Program
- Seamless Summer Program
- Community Food Program

PROVIDING HELP, CREATING HOPE, AND FEEDING IN 2022

These are the stories of your impact.



Catholic Social Services held a successful community baby shower at its DELAWARE COUNTY FAMILY SERVICES CENTER. The event featured instruction in baby care techniques and social development stages along with family fun, prizes, and free food.

| July 2021



SAINT JOHN'S HOSPICE IN PHILADELPHIA launched its first "Boot Up Philly" drive on October 23 at Archdiocese of Philadelphia's Pastoral Center. The campaign greatly surpassed the initial \$35,000 goal. Efforts were able to provide over 500 sets of boots, socks and undergarments. The campaign culminated in an event where 50 archdiocesan staff and volunteers distributed free food, personal care and feminine hygiene items, and 300 coats specifically designed for – and by – those in homelessness.

| October 2021

CASA DEL CARMEN PRESCHOOL ACADEMY launched the "Spark School-Based Art Therapy" pilot program for 27 preschool-aged children who attended the summer camp program.

The program's aim was to positively impact the children's social, emotional, developmental, and cognitive growth.

Art therapy allows children the opportunity to express themselves through wordless methods while providing them with mindfulness tools that can be used in their everyday lives.

The children had a blast making great art and are looking forward to next summer.

| July 2021



An Atlanta-based tech firm teamed up with the PHILADELPHIA ARCHDIOCESE to counter local food insecurity. For the second year in a row, Convergence Acceleration Solutions (CAS) Group donated \$50,000 to archdiocesan Nutritional Development Services (NDS). The funds will help restock more than 50 area food cupboards operated by the agency's community food program.

CAS Group also pledged to match all gifts to NDS through the end of January, dollar-for-dollar up to \$50,000.

CAS Group founder and CEO John McAleer commented on the hands-on approach of NDS. "NDS is an organization that's actually getting the food to the people who need it," he said. "You can't get much clearer than that."

| January 2022



CSS has a long history of helping people whose lives have been torn apart by war, hunger, conflict and disaster. Since December, the agency has provided relief to over 100 Afghan evacuees. By creating the WELCOME THE NEWCOMER initiative more than \$60,000 in private donations has been raised.

Catholic Social Services hosted an Afghan refugee welcome luncheon on March 19 through its AFGHAN PLACEMENT AND ASSISTANCE PROGRAM. Approximately 75 Afghan evacuees attended the luncheon at SAINT JOHN CHRYSOSTOM PARISH in Wallingford, Pennsylvania.

The purpose of the event was to thank the program supporters, donors, staff, and volunteers, and officially welcome the Afghan evacuees.

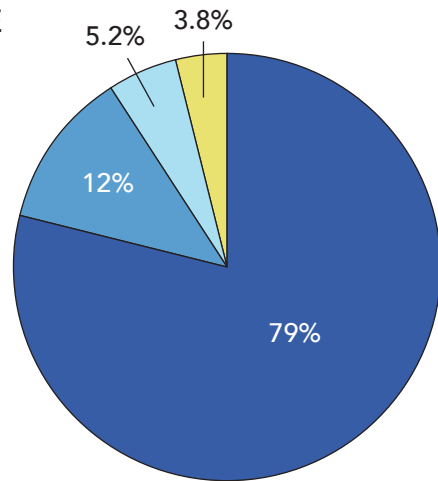
| March 2022

Catholic | Charity.
Social | Impact.
Services | For good.

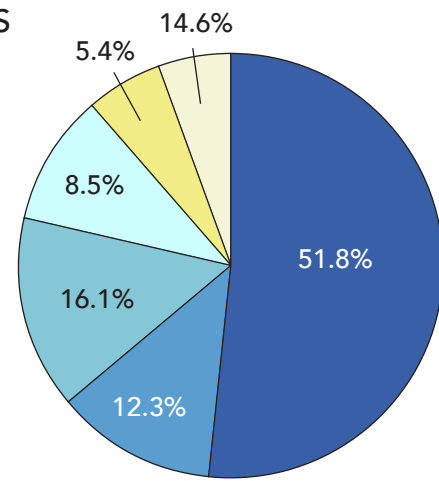
CSS & NDS FINANCIAL OVERVIEW 2022

Year ending June 30, 2022

REVENUE



EXPENDITURES



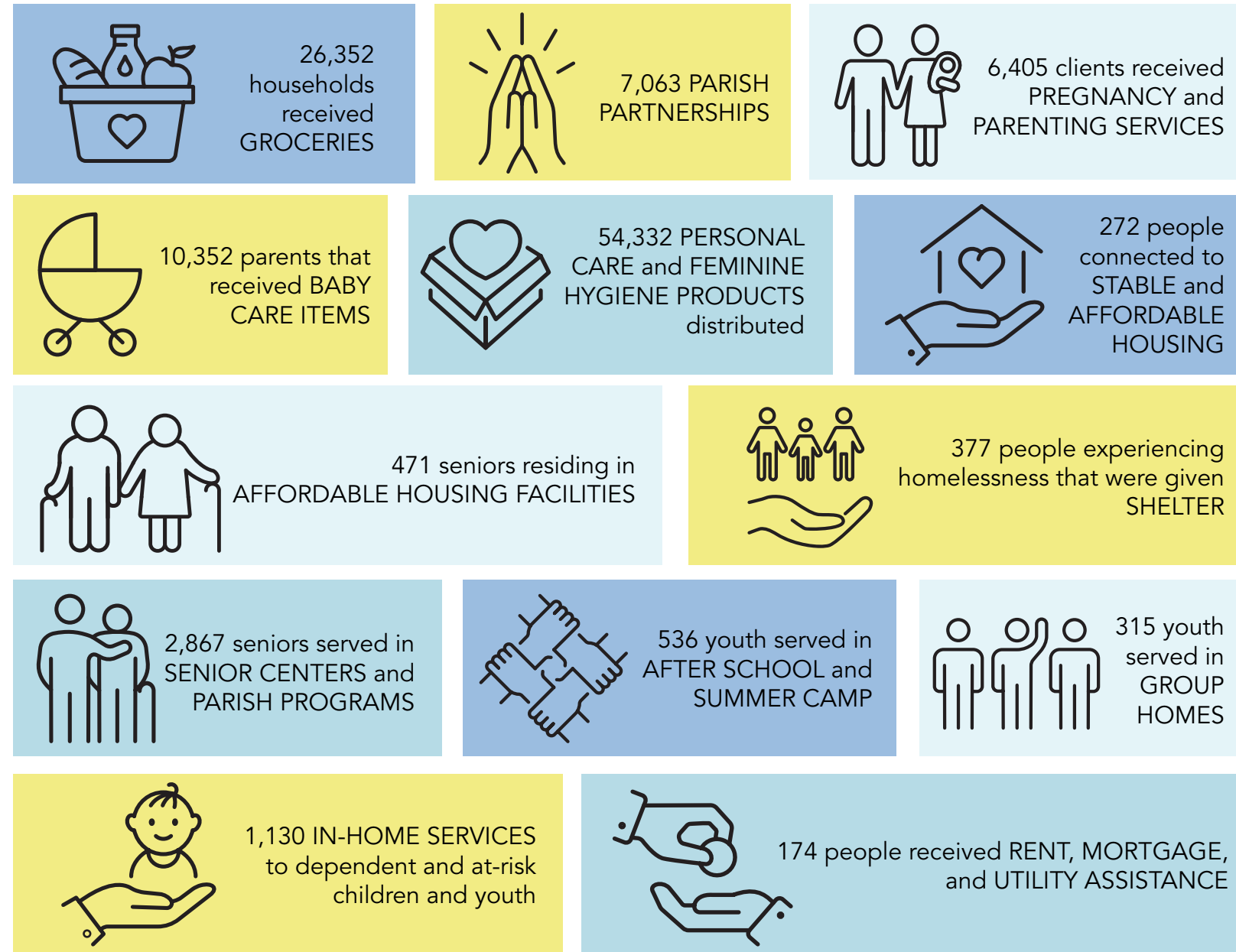
GOVERNMENT FUNDING	\$110,759,597
Phila. Dept of Human Services Community Behavioral Health PA Office of Developmental Programs PA Dept of Education Phila Corporation for Aging US Department of Agriculture Other governmental contracts	
ARCHDIOCESAN SUPPORT	\$16,825,511
Catholic Charities Appeal Trust Fund Disbursements	
GRANTS, DONATIONS & BEQUESTS	\$7,349,522
Riley Family Foundation Connelly Foundation Catholic Foundation of Greater Phila Catholic Charities USA United Way Others	
FEES FOR SERVICE	\$5,285,712
TOTAL SOURCES OF REVENUE	\$140,220,342

DEVELOPMENTAL PROGRAMS	\$72,553,754
The Communities of Don Guanella & Divine Providence St. Edmond's Home for Children Community Day Programs	
YOUTH SERVICES	\$17,278,166
St. Francis & St. Vincent Homes St. Gabriel's System Catholic Community Services Foster Care & Adoption	
NUTRITIONAL DEVELOPMENT SERVICES	\$20,496,455
Community Food Program Child Nutrition Programs	
COMMUNITY-BASED SERVICES	\$13,976,884
Family Service Centers Immigration Legal Services Out of School Time Programs Real Alternatives School Social Work	
CATHOLIC HOUSING & COMMUNITY SERVICES	\$8,087,697
Parish Eldercare Programs Senior Housing Senior Community Centers In-Home Support Services St. Mary's Residence	
HOUSING & HOMELESS SERVICES	\$7,610,003
St. John's Hospice Good Shepherd Program Mercy Hospice McCauley House Visitation Homes Women of Hope	
TOTAL EXPENDITURES	\$140,002,959



TOTAL FULL-TIME EQUIVALENTS (FTES): 1,472

CHS COMMUNITY IMPACT IN 2022 SERVICES ADMINISTERED BY CSS



MEALS DISTRIBUTED BY NUTRITIONAL DEVELOPMENT SERVICES



TOTAL NUMBER OF INDIVIDUALS IMPACTED BY CHS IN 2022

