

# Soni-Inks<sup>®</sup>

For pleasure of writing



Division of

**SONI POLYMERS PVT. LTD. (INDIA)**

42, 'Utkarsha-Vishakha' Bajaj Nagar, Nagpur - 440 010 (INDIA)



**Soni Inks is a Division of Soni Polymers Pvt. Ltd.** is an ISO 9001 – 2015 Certified Company based at Nagpur, India. established in 2001.

We manufacture a wide range of **high quality Stationary Inks of international standards, which are REACH Compliant.**

**Soni Inks** is equipped with – R & D, Formulation & Testing lab and a modern sophisticated Ink manufacturing infrastructure to offer standard as well as Customized, tailor – made Stationary Inks.

**Plant :** Our Plant is equipped with **Modern and High precision Machines used for Inks Manufacturing.** These technically sound equipments along with skilled people have helped us to satisfy our customers and increase our sales.

## Colour Customization

### Value Added Services

Zero defect and 100% Quality and Customer satisfaction are our guiding principles. Besides prompt technical support, we also offer Customizing and Testing. We have necessary know – how, expertise and infrastructure to manufacture Inks of chemical & physical properties that match any popular brand or market-specific demands.

Trust Soni Inks to deliver the Inks you need.

### Colour matching

Myriad people have myriad tastes. If you want a specific shade that we don't offer as a standard shade, then just send across a pantone reference number, a swatch or the sample. And we shall deliver the specific shade that you want.

### Shelf Life

All the inks are tested to 2 years shelf life. The inks give excellent performance even after storing for 2 years in drums or filled in products.

# CONTENTS

● Whiteboard Marker Pen Ink	01
● Permanent Marker Pen Ink	02
● Highlighter Marker Pen Ink	03
● CD/DVD Marker Pen Ink	04
● Ball Pen Ink Standard	05
● Ball Pen Ink Low Viscosity	06
● Ball Pen Ink Ultra Low Viscosity	07
● Gel Pen Ink Pigment Base	08
● Gel Pen Ink Dye Base	09
● GEL PEN INK Follower	10
● FREE FLOW INK For Fluid Ink Pens (Pigment Base)	10
● PRE INK Stamp Ink Pigment Base	11
● PRE INK Stamp Ink Dye Base	12
● PRE INK Stamp Ink (For Plastic)	13
* ● SELF INK Stamp Ink	14
● Fluorescent Window Marker Pen Ink	15
* ● STAMP - PAD Ink	16
* ● Paint Marker Pen Ink	17
● Fabric Marker Pen Ink	18
● Correction Pen Ink (Fluid)	19

\* For Export Only



# WHITE BOARD MARKER INK

## SPECIAL FEATURES :

- 1) Extended Cap-Off time (24 hrs.)
- 2) Pigment base ink with excellent light fastness
- 3) Low odour with non-toxic alcoholic solvent
- 4) Fast – drying with no smear
- 5) Easy wipe-off up to 21 days on whiteboard

## COMPONENT - MATERIALS

- Nibs : Polyester (PE) / Acrylic  
Filters : Polyester with polypropylene wrapping  
Barrels : Polypropylene (PP)  
Caps : Polypropylene co-polymer (PPCO)  
Nozzle & Plugs : Polypropylene (PP)

## PHYSICAL PROPERTIES : BASIC COLOURS

Properties	Black	Blue	Red	Green
Brookfield Viscosity at 25°C, 60 rpm by 61 LV Spindle (cps)	12.30	13.45	15.35	15.20
Particle size ( $\mu$ )	0.4 - 1.0	0.4 - 1.0	0.4 - 1.0	0.4 - 1.0
Surface Tension (d/cm)	24.00	24.00	23.00	25.00
Specific Gravity (g/cm <sup>3</sup> )	0.820	0.820	0.820	0.820
Drying time on whiteboard	< 5 sec	< 5 sec	< 5 sec	< 5 sec
Erasability (21 days)	Excellent	Excellent	Excellent	Excellent
Cap off after 24 hrs at 25°C	Good	Good	Good	Good
Oven Test at 50°C for 15 days	Flow OK	Flow OK	Flow OK	Flow OK

## SPECIAL COLOURS AVAILABLE



# PERMANENT MARKER INK

## SPECIAL FEATURES :

- 1) Extended Cap-Off time (24 hrs.)
- 2) Dry quickly without bleeding or feathering
- 3) Low odour with non-toxic alcoholic solvent
- 4) Excellent adhesion on all kinds of surfaces (metal, glass, plastic etc.)
- 5) Bright and vivid colours
- 6) Enables smooth writing

## COMPONENT - MATERIALS

- Nibs : Acrylic / Polyester  
Filters : Polyester with polypropylene wrapping  
Barrels : Polypropylene (PP)  
Caps : Polypropylene (PP)  
Nozzle & Plugs : Polypropylene (PP)

## PHYSICAL PROPERTIES : BASIC COLOURS

Properties	Black	Blue	Red	Green
Brookfield Viscosity at 25°C, 60 rpm by 61 LV Spindle (cps)	10.60	10.60	11.10	10.90
Surface Tension (d/cm)	25.00	25.00	25.00	25.00
Specific Gravity (g/cm <sup>3</sup> )	0.900	0.890	0.875	0.900
Drying time on plastic / Glass	< 10 sec	< 10 sec	< 10 sec	< 10 sec
Light fastness	Good	Good	Good	Good
Water Resistance	Excellent	Excellent	Excellent	Excellent
Cap off after 24 hrs at 25°C	Good	Good	Good	Good
Oven Test at 50°C for 15 days	Flow OK	Flow OK	Flow OK	Flow OK

## SPECIAL COLOURS AVAILABLE



YELLOW



ORANGE



PINK



VIOLET



BROWN



LIGHT GREEN



SKY BLUE



TURQUOISE

# HIGHLIGHTER MARKER PEN INK

## SPECIAL FEATURES :

- 1) Excellent colours - intensity and brilliancy
- 2) Dry quickly without bleeding or feathering
- 3) Compatible with various paper like Copier, Computer, Fax (thermal paper) etc.
- 4) Water base Non-toxic formula
- 5) Excellent sun light resistance

## COMPONENT - MATERIALS

- Nibs : Polyester (PE) / Porous plastic (porex)
- Filters : Polyester with polypropylene wrapping
- Barrels : Polypropylene (PP)
- Caps : Polypropylene (PP)
- Plugs : Polypropylene (PP)

## PHYSICAL PROPERTIES : BASIC COLOURS

Properties	Yellow	Green	Orange	Pink
Brookfield Viscosity at 25°C, 60 rpm by 61 LV Spindle (cps)	9.90	11.70	12.10	12.00
Surface Tension (d/cm)	35.00	33.00	33.00	33.00
Specific Gravity (g/cm <sup>3</sup> )	1.120	1.105	1.110	1.105
Sour Alkalinity (pH)	8.90	7.65	7.93	8.10
Light fastness	Excellent	Excellent	Excellent	Excellent
Cap off after 8 hrs at 25°C	Good	Good	Good	Good
Oven Test at 50°C for 15 days	Flow OK	Flow OK	Flow OK	Flow OK

## SPECIAL COLOURS AVAILABLE



BLUE



VIOLET



BARBIE PINK

RED

## SPECIAL FEATURES :

- 1) Extended Cap-Off time
- 2) Dry quickly without bleeding or feathering
- 3) Low odour with non-toxic alcoholic solvent
- 4) Excellent adhesion on all kinds of surfaces  
(metal, glass, plastic etc.)
- 5) Bright and vivid colours
- 6) Enables smooth writing

## COMPONENT - MATERIALS

- Nibs : Polyester, Acetal, Plastic
- Filters : Polyester with polypropylene wrapping
- Barrels : Polypropylene (PP)
- Caps : Polypropylene (PP)
- Plugs : Polypropylene (PP)

## PHYSICAL PROPERTIES : BASIC COLOURS

Properties	Black	Blue	Red	Green
Brookfield Viscosity at 25°C, 60 rpm by 61 LV Spindle (cps)	10.00	10.00	9.60	9.70
Surface Tension (d/cm)	23.00	23.00	23.00	23.00
Specific Gravity (g/cm <sup>3</sup> )	0.980	0.975	0.975	0.980
Drying time on CD/DVD	< 5 sec	< 5 sec	< 5 sec	< 5 sec
Light fastness	Good	Good	Good	Good
Water Resistance	Excellent	Excellent	Excellent	Excellent
Cap off after 8 hrs at 25°C	Good	Good	Good	Good
Oven Test at 50°C for 15 days	Flow OK	Flow OK	Flow OK	Flow OK

## SPECIAL COLOURS AVAILABLE



# BALL PEN INK STANDARD

## PHYSICAL PROPERTIES :

Properties	Blue	Black	Red
Ref.	SB 200 BLU	SB 200 BLK	SB 200 RED
Brookfield Viscosity at 20°C, 12 rpm by 64 LV Spindle (cps)	12000 ± 1000	13000 ± 1000	11000 ± 1000
Sour Alkalinity (PH)	5.53	5.37	5.68
Surface Tension (d/cm)	40.00	40.00	38.00
Specific Gravity (g/cc)	1.099	1.139	1.102
Water Resistance	Good	Good	Good
Writing	Smooth	Smooth	Smooth
Pens kept at 50°C for 30 days	Flow OK	Flow OK	Flow OK
Tip Used (CRI / IWI / ESSEM)	0.6 - 1.00 mm	0.6 - 1.00 mm	0.6 - 1.00 mm

## SPECIAL COLOURS AVAILABLE



GREEN



ORANGE



PINK



VIOLET



BROWN



LIGHT BLUE



YELLOW



# BALL PEN INK LOW VISCOSITY (O.B.G.)

## SPECIAL FEATURES :

- 1) Very smooth in writing
- 2) No follower required

## PHYSICAL PROPERTIES :

Properties	Blue	Black	Red
Ref.	SB 400 BLU	SB 400 BLK	SB 400 RED
Brookfield Viscosity at 20°C, 12 rpm by 64 LV Spindle (cps)	5500 ± 500	5500 ± 500	5500 ± 500
Sour Alkalinity (PH)	6.81	6.44	6.81
Surface Tension (d/cm)	41.00	36.00	36.00
Specific Gravity (g/cc)	1.125	1.083	1.111
Water Resistance	Good	Good	Good
Writing	Smooth	Smooth	Smooth
Pens kept at 50°C for 30 days	Flow OK	Flow OK	Flow OK
Tip Used (CRI / IWI / ESSEM)	0.7 - 1.00 mm	0.7 - 1.00 mm	0.7 - 1.00 mm

## SPECIAL COLOURS AVAILABLE



GREEN



ORANGE



PINK



VIOLET



BROWN



LIGHT BLUE



YELLOW

# BALL PEN INK ULTRA LOW VISCOSITY (O.B.G.)

## SPECIAL FEATURES :

- 1) Very smooth in writing
- 2) Follower required

## PHYSICAL PROPERTIES :

Properties	Blue	Black	Red
Ref.	SB 600 BLU	SB 600 BLK	SB 600 RED
Brookfield Viscosity at 20°C, 12 rpm by 64 LV Spindle (cps)	3000 ± 500	3000 ± 500	3000 ± 500
Sour Alkalinity (PH)	6.52	6.78	6.52
Surface Tension (d/cm)	36.00	37.00	36.00
Specific Gravity (g/cc)	1.100	1.110	1.100
Water Resistance	Good	Good	Good
Writing	Smooth	Smooth	Smooth
Pens kept at 50°C for 30 days	Flow OK	Flow OK	Flow OK
Tip Used (CRI / IWI / ESSEM)	0.6 - 1.00 mm	0.6 - 1.00 mm	0.6 - 1.00 mm

## SPECIAL COLOURS AVAILABLE



GREEN



ORANGE



PINK



VIOLET



BROWN



LIGHT BLUE



YELLOW

## SPECIAL FEATURES :

- 1) Very smooth in writing
- 2) Water Base Ink
- 3) Instant dry on paper
- 4) Long shelf life

## PHYSICAL PROPERTIES :

Properties	Blue	Black	Red	Green
Ref.	SG 400 BLU	SG 400 BLK	SG 400 RED	SG 400 GRN
Brookfield Viscosity at 25°C, 12 rpm by 63 LV Spindle (cps)	2000 ± 200	2000 ± 200	2000 ± 200	2000 ± 200
Sour Alkalinity (pH)	7.78	7.40	7.67	7.70
Surface Tension (d/cm)	36.00	39.00	38.00	36.00
Specific Gravity (g/cm <sup>3</sup> )	1.065	1.060	1.065	1.085
Particle size (μ)	0.5 - 0.7	0.5 - 0.7	0.5 - 0.7	0.5 - 0.7
Water Resistance	Excellent	Excellent	Excellent	Excellent
Writing	Smooth	Smooth	Smooth	Smooth
Total Solid %	33.18 %	35.34 %	33.82 %	33.39 %
Tip Used (CRI / IWI / ESSEM)	0.5 - 0.6 mm	0.5 - 0.6 mm	0.5 - 0.6 mm	0.5 - 0.6 mm

## SPECIAL FEATURES :

- 1) Very smooth in writing
- 2) Water Base Ink
- 3) Instant dry on paper
- 4) Long shelf life

## PHYSICAL PROPERTIES :

Properties	Blue	Black	Red	Green
Ref.	SG 200 BLU	SG 200 BLK	SG 200 RED	SG 200 GRN
Brookfield Viscosity at 25°C, 12 rpm by 63 LV Spindle (cps)	2000 ±200	2000 ±200	2000 ±200	2000 ±200
Sour Alkalinity (pH)	8.00	8.60	8.18	8.13
Surface Tension (d/cm)	37.00	38.00	35.00	36.00
Specific Gravity (g/cm <sup>3</sup> )	1.040	1.040	1.060	1.050
Water Resistance	Fair	Fair	Fair	Fair
Writing	Smooth	Smooth	Smooth	Smooth
Tip Used (CRI / IWI / ESSEM)	0.5 - 0.6 mm	0.5 - 0.6 mm	0.5 - 0.6 mm	0.5 - 0.6 mm

## SPECIAL COLOURS AVAILABLE



## PHYSICAL PROPERTIES :

Ref.	Ink Follower 18 K	Ink Follower 30 K
Appearance	Colourless, Translucent material	Colourless, Translucent material
Brookfield Viscosity at 20°C, 12 rpm by 64 LV Spindle (cps)	18000 ± 2000	30000 ± 2000
Surface Tension (d/cm)	34.00	34.00
Specific Gravity (g/cm <sup>3</sup> )	0.89 Approx	0.89 Approx
Water Resistance	Excellent	Excellent
Drainage in Refill	No Drainage in Refill	No Drainage in Refill
Drop Test	Pass drop test of refill / pens	Pass drop test of refill / pens
Follow Up Action	Follow up to end	Follow up to end
Storage Stability	No change in viscosity or performance even after long storage	No change in viscosity or performance even after long storage
Suitable for Tube Diameter (I.D.)	1.6 mm - 2.00 mm	2.0 mm - 4.00 mm

## FREE FLOW INK

FOR FLUID INK PENS (PIGMENT BASE)

## SPECIAL FEATURES :

- 1) Very smooth in writing
- 2) Water Base Ink
- 3) Instant dry on paper
- 4) Long shelf life

## PHYSICAL PROPERTIES :

Properties	Blue	Black	Red	Green
Ref.				
Brookfield Viscosity at 25°C, 50 rpm by 61 LV Spindle (cps)	9.6	9.4	10.8	9.6
Brookfield Viscosity at 25°C, 50 rpm by 63 LV Spindle (cps)	151	154	161	144
Sour Alkalinity (pH)	7.89	7.82	7.91	8.33
Surface Tension (d/cm)	31	33	33	27
Specific Gravity (g/cm <sup>3</sup> )	1.052	1.052	1.052	1.052
Water Resistance	Excellent	Excellent	Excellent	Excellent
Writing Length	Upto 800 meter	Upto 800 meter	Upto 800 meter	Upto 800 meter
Ink lay down (0.5 mm)	150 m	150 m	150 m	150 m

# PRE INKED STAMP INK (PIGMENT BASE)

## SPECIAL FEATURES :

- 1) Ink gives sharp impression on paper
- 2) Ink gives large no. of impression without drying
- 3) Very less penetration through paper
- 4) Does not react with the body (HIPS / ABS) of the stamp

## COMPONENT - MATERIALS

Handle : ABS  
Body : ABS  
Cover : ABS

## PHYSICAL PROPERTIES : BASIC COLOURS

Properties	Black	Blue	Red	Green	Violet
Brookfield Viscosity at 25°C, 60 rpm by 64 LV Spindle (cps)	960	940	820	810	990
Surface Tension (d/cm)	34.00	34.00	34.00	35.00	34.00
Specific Gravity (g/cm <sup>3</sup> )	0.960	0.950	0.970	0.960	0.950
Stamp drying time on Paper	< 5 sec	< 5 sec	< 5 sec	< 5 sec	< 5 sec
Impression on Paper	Sharp	Sharp	Sharp	Sharp	Sharp
Ink Spreading	Nil	Nil	Nil	Nil	Nil
Penetration through Paper	Less	Less	Less	Less	Less
Shade on Paper	Bright	Bright	Bright	Bright	Bright

# PRE INKED STAMP INK (DYE BASE)

## SPECIAL FEATURES :

- 1) Ink gives sharp impression on paper
- 2) Ink gives large no. of impression without drying
- 3) Very less penetration through paper
- 4) Does not react with the body (HIPS / ABS) of the stamp

## COMPONENT - MATERIALS

Handle : ABS  
Body : ABS  
Cover : ABS

## PHYSICAL PROPERTIES : BASIC COLOURS

Properties	Black	Blue	Red	Green	Violet
Brookfield Viscosity at 25°C, 60 rpm by 64 LV Spindle (cps)	1300	1390	1250	1260	1250
Surface Tension (d/cm)	34.00	34.00	34.00	34.00	34.00
Specific Gravity (g/cm <sup>3</sup> )	1.000	1.000	1.005	0.990	1.000
Stamp drying time on Paper	< 5 sec	< 5 sec	< 5 sec	< 5 sec	< 5 sec
Impression on Paper	Sharp	Sharp	Sharp	Sharp	Sharp
Ink Spreading	Nil	Nil	Nil	Nil	Nil
Penetration through Paper	Less	Less	Less	Less	Less
Shade on Paper	Bright	Bright	Bright	Bright	Bright

# PRE INKED STAMP INK (FOR PLASTIC)

## SPECIAL FEATURES :

- 1) Ink gives sharp impression on plastic
- 2) Ink gives large no. of impression without drying
- 3) Sharp & Bright colour impression on plastic
- 4) Does not react with the body (HIPS / ABS) of the stamp

## PHYSICAL PROPERTIES : BASIC COLOURS

Properties	Black	Blue	Red	Green	Violet
Brookfield Viscosity at 25°C, 60 rpm by 61 LV Spindle (cps)	1290	1300	1260	1270	1240
Surface Tension (d/cm)	35.00	35.00	35.00	35.00	35.00
Specific Gravity (g/cm <sup>3</sup> )	1.030	1.015	1.010	1.010	1.010
Drying time on Plastic	< 120 sec	< 120 sec	< 120 sec	< 120 sec	< 120 sec
Impression on Plastic	Sharp	Sharp	Sharp	Sharp	Sharp
Ink Spreading	Nil	Nil	Nil	Nil	Nil
Shade on Plastic	Bright	Bright	Bright	Bright	Bright



## SPECIAL FEATURES :

- 1) Ink gives sharp impression on Paper
- 2) Ink gives large no. of impression without drying
- 3) Very less penetration through paper
- 4) Does not react with the body (HIPS / ABS) of the stamp

## PHYSICAL PROPERTIES : BASIC COLOURS

Properties	Black	Blue	Red	Green	Violet
Brookfield Viscosity at 25°C, 60 rpm by 61 LV Spindle (cps)	33.00	26.00	24.00	26.00	27.80
Surface Tension (d/cm)	25.00	25.00	26.00	25.00	25.00
Specific Gravity (g/cm <sup>3</sup> )	1.130	1.140	1.110	1.120	1.125
Sour Alkalinity (pH)	9.21	7.04	6.75	7.90	7.51
Stamp drying time on Paper	< 5 sec	< 5 sec	< 5 sec	< 5 sec	< 5 sec
Impression on Paper	Sharp	Sharp	Sharp	Sharp	Sharp
Ink Spreading	Nil	Nil	Nil	Nil	Nil
Penetration through Paper	Less	Less	Less	Less	Less
Shade on Paper	Bright	Bright	Bright	Bright	Bright

## SPECIAL COLOURS AVAILABLE



PINK



ORANGE



YELLOW



LIGHT BLUE



LIGHT GREEN

## SPECIAL FEATURES :

- 1) Excellent colour intensity & brilliancy
- 2) Opaque Marking
- 3) Easy wipe off with tissue paper or cloth
- 4) Non toxic / low odour alcoholic formula
- 5) For decorating & writing on - Menu Board, Black/ White boards, Laminated papers, Glass, Windows, on porous surfaces
- 6) Excellent for use in Cafes, Pubs, Restaurants, Florists, Gift Shops, Home, Clothing Boutique, School, Offices etc.

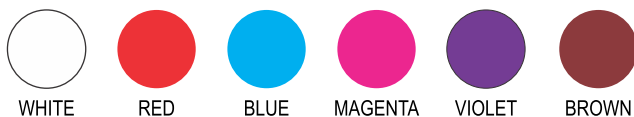
## COMPONENT - MATERIALS

- Nibs : Polyester Fiber
- Valve Assembly : LDPE
- Barrels : Polypropylene (PP)
- Nozzle : Delrin
- Caps : Polypropylene (PP)

## PHYSICAL PROPERTIES : BASIC COLOURS

Properties	Orange	Green	Yellow	Pink
Brookfield Viscosity at 25°C, 60 rpm by 61 LV Spindle (cps)	43.20	42.60	48.00	44.60
Surface Tension (d/cm)	30.00	30.00	32.00	30.00
Specific Gravity (g/cm <sup>3</sup> )	1.100	1.080	1.150	1.120
Sour Alkalinity (pH)	7.76	7.76	7.60	7.61
Cap off after 4 hrs. at 25°C	Good	Good	Good	Good
Drying time on Black / White Board	< 20 sec	< 20 sec	< 20 sec	< 20 sec
Eras ability / Wipe off	Excellent	Excellent	Excellent	Excellent
Light fastness & colour intensity	Excellent	Excellent	Excellent	Excellent
Oven Test at 50°C for 15 days	Flow OK	Flow OK	Flow OK	Flow OK

## SPECIAL COLOURS AVAILABLE



## SPECIAL FEATURES :

- 1) Ink gives sharp impression on paper
- 2) Ink gives large no. of impression without drying
- 3) Very less penetration through paper
- 4) Does not react with the body / Foam of the stamp

## COMPONENT - MATERIALS

- Top : Polypropylene (PP)  
 Bottom : Polypropylene (PP)

## PHYSICAL PROPERTIES : BASIC COLOURS

Properties	Black	Blue	Red	Green	Violet
Brookfield Viscosity at 25°C, 60 rpm by 61 LV Spindle (cps)	20.40	18.60	19.20	19.70	16.00
Surface Tension (d/cm)	26.00	25.00	25.00	25.00	25.00
Specific Gravity (g/cm <sup>3</sup> )	1.160	1.150	1.160	1.150	1.165
Sour Alkalinity (pH)	8.75	6.62	7.40	5.29	4.30
Stamp drying time on Paper	< 5 sec	< 5 sec	< 5 sec	< 5 sec	< 5 sec
Impression on Paper	Sharp	Sharp	Sharp	Sharp	Sharp
Ink Spreading	Nil	Nil	Nil	Nil	Nil
Penetration through Paper	Less	Less	Less	Less	Less
Shade on Paper	Bright	Bright	Bright	Bright	Bright

## SPECIAL FEATURES :

- 1) Weather resistant
- 2) Lightfast
- 3) Water resistant
- 4) Opaque marking
- 5) Xylene, benzene and toluene free
- 6) Low odour alcohol formulation
- 7) High-impact, durable, rub-resistant permanent and intense mark offering considerable advantage over regular permanent marker ink
- 8) Suitable for industrial application, metal, plastic, ceramic, concrete, rubber, paper and many other surface
- 10) **REACH COMPLIANT INK**

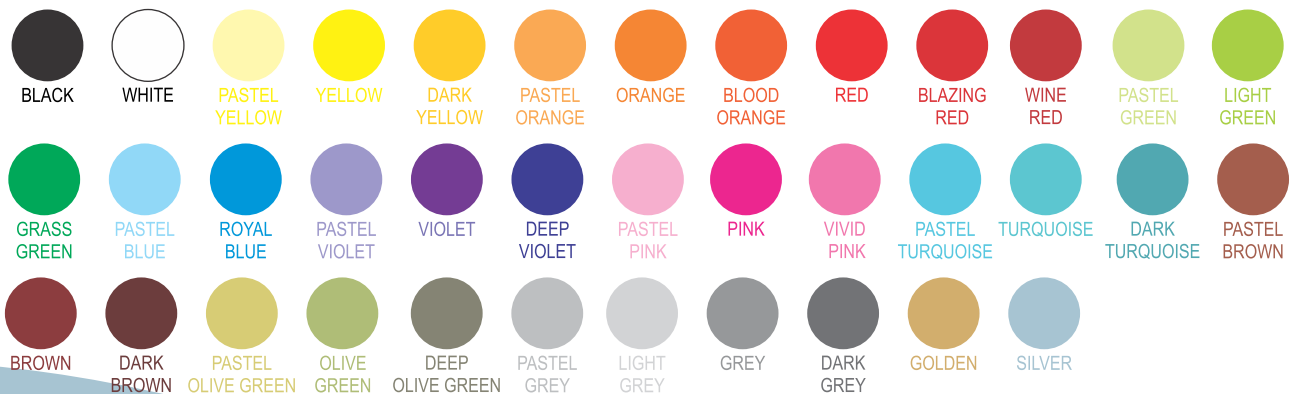
## COMPONENT - MATERIALS

- Nibs : Acrylic
- Valve Assembly : LDPE
- Barrels : Polypropylene (PP) / Aluminium
- Nozzle : Delrin
- Caps : Polypropylene (PP)

## PHYSICAL PROPERTIES : BASIC COLOURS

Properties	Black	Blue	Red	Green
Brookfield Viscosity at 25°C, 60 rpm by 61 LV Spindle (cps)	45.20	49.40	57.00	48.30
Particle size (μ)	0.5 - 1.0	0.5 - 1.0	0.5 - 1.0	0.5 - 1.0
Surface Tension (d/cm)	26.00	26.00	26.00	26.00
Specific Gravity (g/cm <sup>3</sup> )	0.970	0.985	0.975	0.995
Cap off after 1 hrs at 25°C	Good	Good	Good	Good
Rub / Scratch Resistance	Excellent	Excellent	Excellent	Excellent
Light fastness & Colour intensity	Excellent	Excellent	Excellent	Excellent
Water Resistance	Excellent	Excellent	Excellent	Excellent
Adhesion on Mica, Plastic, Glass etc.	Excellent	Excellent	Excellent	Excellent
Oven Test at 50°C for 15 days	Flow OK	Flow OK	Flow OK	Flow OK
Drying time on Mica, Plastic, Metal Surface, Glass Stainless Steel etc.	< 20sec	< 20sec	< 20sec	< 20sec

## SPECIAL COLOURS AVAILABLE



## SPECIAL FEATURES :

- 1) Excellent colour intensity & Brilliancy.
- 2) Non Fading, Non Spreading, Wash Proof on cotton Fabric
- 3) Permanent on Cotton Fabric after 72 Hrs.
- 4) Pigment Based, Non -toxic / low odour Formula
- 5) For Decorating & Painting / Designing on cotton fabric
- 6) Excellent for use in - Fashion Industries, Textile Industries, Hosiery Industries, Artists etc.

## COMPONENT - MATERIALS

- Nibs : Acrylic
- Filters : Polyester with polypropylene wrapping
- Barrels : Polypropylene (PP)
- Caps : Polypropylene (PP)
- Plugs : Polypropylene (PP)

## PHYSICAL PROPERTIES : BASIC COLOURS

Properties	Black	Blue	Red	Green
Brookfield Viscosity at 25°C, 60 rpm by 61 LV Spindle (cps)	13.50	13.60	13.70	13.80
Surface Tension (d/cm)	36.00	33.00	34.00	34.00
Specific Gravity (g/cm <sup>3</sup> )	1.105	1.100	1.055	1.100
pH	6.83	6.82	8.70	6.92
Cap off after 4 hrs at 25°C	Good	Good	Good	Good
Drying time on Cotton Fabric	< 5 sec	< 5 sec	< 5 sec	< 5 sec
Adhesion on Cotton Fabric after 72 Hrs.	Permanent	Permanent	Permanent	Permanent
Light fastness & colour Intensity	Excellent	Excellent	Excellent	Excellent
Oven test at 50°C for 15 days	Flow OK	Flow OK	Flow OK	Flow OK

## SPECIAL COLOURS AVAILABLE



# CORRECTION PEN INK (FLUID)

## SPECIAL FEATURES :

- 1) Quick drying.
- 2) Good hiding for Ball pen, gel pen & xerox copies

## COMPONENT - MATERIALS

Nibs : Metal Tip  
Barrels : Nylon  
Nozzle : Delrin / Nylon  
Cap : Polycarbonate / Polypropylene (PP)  
:

## PHYSICAL PROPERTIES

Properties	White
Brookfield Viscosity at 25°C, 30 rpm by 63 LV Spindle (cps)	150 ± 25
Particle size (μ)	0.30 - 0.90
Surface Tension (d/cm)	28.00 - 31.00
Specific Gravity (g/cm <sup>3</sup> )	1.20 - 1.30
Solid %	55.00 - 60.00
Drying time on Paper	35 - 40 Sec
Hiding on Paper	OK
Rewriting	OK
Scratch Resistance	Non Scratchy



ISO 9001 : 2015



Good Manufacturing Practice



REACH COMPLIANT



EN 71 Part 3 Certification for Ink



- Whiteboard Marker Pen Ink
- Permanent Marker Pen Ink
- Highlighter Marker Pen Ink
- CD/DVD Marker Pen Ink
- Ball Pen Ink Standard
- Ball Pen Ink Low Viscosity
- Ball Pen Ink Ultra Low Viscosity
- Gel Pen Ink Pigment Base
- Gel Pen Ink Dye Base
- GEL PEN INK Follower
- FREE FLOW INK For Fluid Ink Pens (Pigment Base)
- PRE INK Stamp Ink Pigment Base
- PRE INK Stamp Ink Dye Base
- PRE INK Stamp Ink (For Plastic)
- \* ● SELF INK Stamp Ink
- Fluorescent Window Marker Pen Ink
- \* ● Stamp - Pad Ink
- \* ● Paint Marker Pen Ink
- Fabric Marker Pen Ink
- Correction Pen Ink (Fluid)
- \* For Export Only

## **SONI POLYMERS PVT. LTD.**

42, 'UTKARSHA-VISHAKHA', BAJAJ NAGAR, NAGPUR - 440 010 (INDIA)

PH : (O) : +91 - 712 - 2236463, 2232002, 2221746, 2249598

e-mail : [domestic@soniofficemate.com](mailto:domestic@soniofficemate.com) (Dr. Sharad Thombre : 9422146933)

[export@soniofficemate.com](mailto:export@soniofficemate.com) (Mr. Rahul Soni : 9823052074)

Website : [www.soni-inks.com](http://www.soni-inks.com)

Request for sample