

(above) CB&Q No. 5629 is at the C&S 7th Street roundhouse on August 29, 1963, the day before it was brought to the museum. (Robert W. Richardson photo (below) 5629 in service on Burlington mainline as a coal burner. (CB&Q photo)

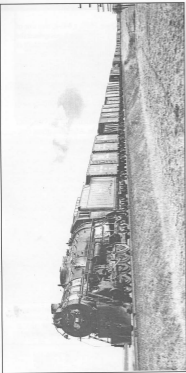
Chicago Burlington & Quincy 5629, a 4-8-4, was one of 15 engines, numbered 5621 to 5635, which comprised the last class of steam locomotives on the Burlington. Built at the West Burlington Shops between 1938 and 1940, they were classed O-5A and were designed for fast freight and heavy passenger service. The 5629 began its career on the Chicago to Denver mainline but was transferred to the Twin Cities line in the mid 1940's. By 1950 the engine was back in the West, hauling freight between Lincoln and Denver or Alliance, Neb. About this time it was converted to oil and reclassified O-5B. It continued in service until 1956, when it was stored at Lincoln. After this it saw considerable duty as a stationary boiler at several points in Nebraska. When the 5632 fell due for heavy repairs, it was almost replaced by the 5629, but instead the 5632 was shopped. Early in 1963, the Intermountain Chapter of the NRHS began negotiations with the Burlington and on August 30, 1963, the engine was moved to the Colorado Railroad Museum and presented to the chapter by Mr. J.J. Alms, Vice President of the CB&Q. In 2005, the Intermountain Chapter transferred ownership to the museum. - F. Hol Wagner, Jr.

**Color Scheme:** The engine is painted black with aluminum smoke box and firebox. At times the main rods were polished. The interior of the cab is a light green.

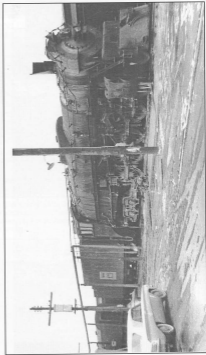
**Reference:** Corbin, Bernard G., and William F. Kerka, *Steam Locomotives of the Burlington Route*, 1960.



Jim Saacrest photographed  
5629 on the headend of a fast  
freight west of Keenesburg,  
Colorado, on February 26,  
1961.



The engine was in use as a  
stationary boiler in Lincoln,  
Nebraska, on February 13,  
1963. (CRRM collection)







By the grimy appearance of 5629 in this photo, it had seen many years of heavy service. (CRRM collection)



(above) The engine is being pushed into the museum over a temporary bridge under the watchful eyes of Burlington railroaders. (David S. Digerness photo) (below) The largest steam engine at the museum sits beside the oldest engine, DSP&P 191. Only three other engines of this class were saved: 5614 at St. Joseph, Missouri; 5631 at Sheridan, Wyoming; and 5633 at Douglas, Wyoming. (Don R. Kaplan photo)



**Colorado Railroad  
Museum**  
P.O. Box 10  
Golden, CO 80402-0010  
Compiled by Kenton Forrest and  
Bob Jensen  
2006