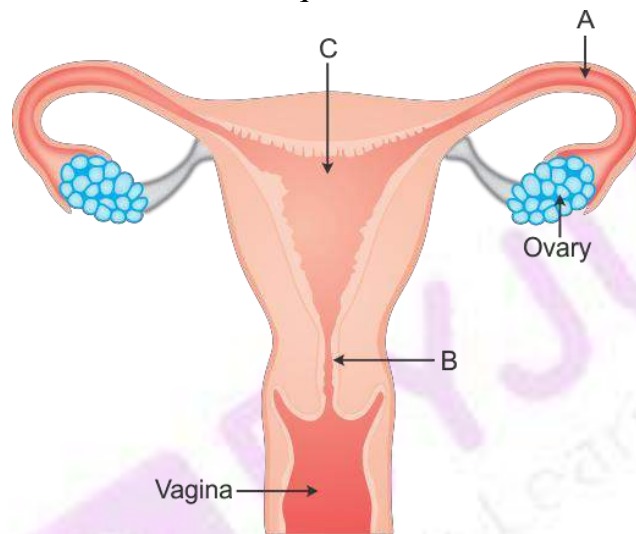


ICSE Class 8 Biology Important Questions

- Choose the correct answer out of the four available choices given below each question.
 - Pulmonary vein carries
 - Oxygenated blood
 - Deoxygenated blood
 - Glucose-rich blood
 - CO₂ laden blood
 - Water from the soil enters the root xylem by the process of
 - Diffusion
 - Active transport
 - Osmosis
 - Both (a) and (b)
 - Breathing is controlled by which part of the brain / brainstem?
 - Cerebrum
 - Cerebellum
 - Medulla Oblongata
 - Pons
- Give a scientific word for the following:
 - An instrument used to measure blood pressure.
 - Ailment caused due to the enlargement of the thyroid gland.
 - The age at which a human develops secondary sexual characters.
 - A place where bees are reared and grown artificially to obtain wax, honey and other important products.
 - Disease-causing germs.
- Fill in the blanks and rewrite the sentences:
 - Conversion of glycogen into glucose is facilitated by the _____ enzyme.
 - _____ is the seat of intelligence and consciousness.
 - Penicillin is obtained from _____.
 - Over consumption of alcohol causes _____.
 - _____ are absorbed through active transport by the roots.
- Match the items in column I with the appropriate items in column II.

Column A	Column B
1. Fish farming	(a) Root pressure
2. Rearing of silkworm	(b) Vagina
3. Ascent of sap	(c) Aquaculture
4. Rearing of honeybees	(d) Apiculture
5. Birth canal	(e) Sericulture

5. Study the diagram below and answer the questions that follow:



- i. Label the parts labelled A, B and C.
 - ii. Write the functions of part A and part C.
6. What is a food chain? Explain with the help of a neat and well-labeled diagram.
7. Name the following
- i. Three freshwater edible fish of India.
 - ii. Residue of oil seeds used as cattle feed after the extraction of oil.
 - iii. A cross-breed of hens.
 - iv. A Kashmiri goat known for its expensive wool.
 - v. Most widely used silkworm for sericulture.
8. Give one point of difference between the following on the basis of what is given in the brackets:
- i. Arteries and Veins (Type of blood carried)
 - ii. Mint plant and Potato (Reproduction)
 - iii. Muscle and Glands (Response to nerve impulse)

- iv. Adrenal medulla and Adrenal cortex (Hormone secreted)
 - v. Hay fever and Leukemia (Type of disease)
9. Below given are some diseases. Identify the cause of the disease and mention one food source of the causative component.
- i. Beri-beri
 - ii. Rickets
 - iii. Goitre
 - iv. Pellagra
 - v. Anemia
10. State one function of each of the following:
- i. Pericardium
 - ii. Left Ventricle
 - iii. White blood cells
 - iv. Haemoglobin
 - v. Liver
11. Define the following terms:
- i. Microbiology
 - ii. Endangered Species
 - iii. Deforestation
 - iv. Nuclear energy
 - v. Wildlife
12. Describe the characteristics of insect and water pollinated flowers.
13. Explain the significance of testes lying within the scrotum.
14. Why one should avoid eating polished rice?
15. If you spray a room freshener from a bottle in one end of a hall, will your friend at the other end of the hall be able to smell it? Explain your answer scientifically.
16. Give scientific reasons
- a. Adolescents need to plan their diet and lifestyle to maintain a healthy body.
 - b. Yeast is used in bakery products.
 - c. The scrotum lies outside the body cavity.

17. A man was suffering from diabetes. He was urinating frequently in copious amounts resulting in loss of water. Which type of diabetes is this and which hormone is responsible for it?
18. What is a food pyramid? What is the role of food pyramid in the functioning of ecosystems?
19. Explain the method of asexual reproduction in plants by any one sub-aerial stem.
20. What is a reflex arc? Answer the following in the correct sequence:
 - a. A sensory neuron conducts the impulse from the receptor to the spinal cord.
 - b. A receptor receives a stimulus.
 - c. The motor neuron passes the impulse to an effector, which carries out the action in response to the stimulus.
 - d. An association neuron transmits the impulse from the sensory neuron to a motor neuron