

# 2022-2023 ANNUAL REPORT

#AllinforKids



# WHO WE ARE

## Vision

We envision a future rooted in educational equity in which every young person in Washington State has the resources and community support needed to thrive.

---

## Mission

Our mission is to surround students with a community of support, empowering them to stay in school and achieve in life.

## Our Unique Role & Purpose as the State Office

As the State Office, we serve a unique role in the Communities In Schools of Washington (CISWA) Network. Our role is to hold the center of the network strategy and serve as a support structure and facilitate connection within the CISWA Network. We do this in a variety of ways, including:

- Mobilize resources in support of the Network's shared goals.
- Serve as Network connector, convener, community builder and knowledge broker.
- Advance policy that supports the Network's collective vision and mission.
- Raise awareness of the CIS® model and our collective impact.



# WHO WE ARE

## Our Network Commitment to Educational Equity

Children and youth deserve a caring community that empowers them to achieve their goals in the classroom and beyond. To do so, racism and other inequalities in our educational system and society must be acknowledged and address. The Communities In Schools of Washington (CISWA) network exists to build on student strengths and overcome systemic barriers through advocacy, partnership, and individual social-emotional supports.

## State Office Values



### EQUITY

We believe the urgency of educational inequity requires us to be brave in closing the opportunity gap for young people, their families, and communities.



### YOUTH CENTERED

We believe young people should have a voice in anything we do for them and on their behalf.



### COLLABORATION

We believe transformative impact is possible when we work together in deep collaboration.



### INTEGRITY

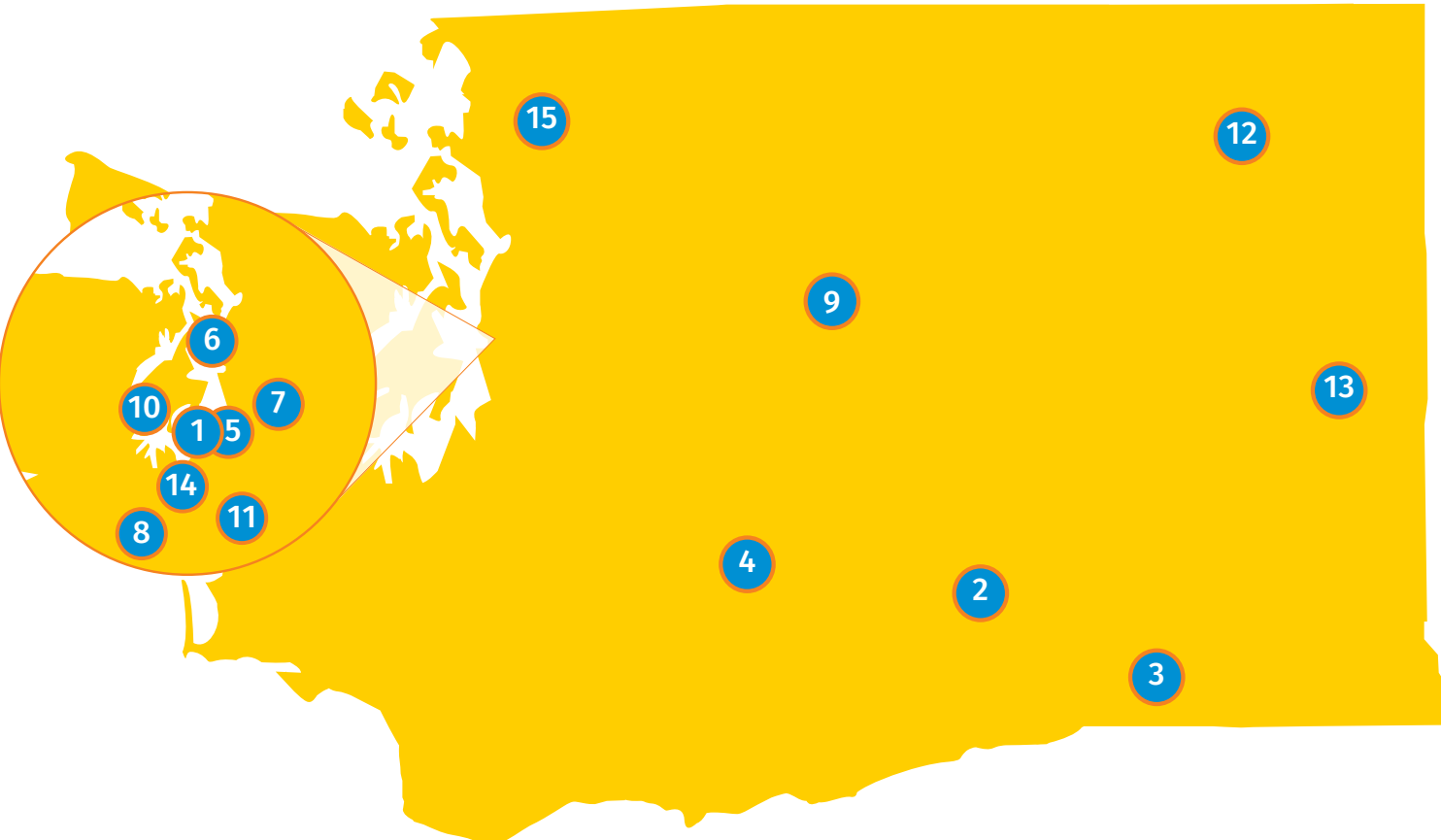
We believe we can take on difficult and complex issues when we show up with honesty, mutual respect, transparency, and accountability.



### INNOVATION

We believe that innovation is critical to solving root problems and to respond to changes in our community.

# OUR FOOTPRINT



- |                               |                                   |                                    |
|-------------------------------|-----------------------------------|------------------------------------|
| <b>1</b> CISWA STATE OFFICE   | <b>6</b> GREATER KING COUNTY      | <b>11</b> PUYALLUP                 |
| <b>2</b> BENTON-FRANKLIN      | <b>7</b> KENT                     | <b>12</b> RURAL EASTERN WASHINGTON |
| <b>3</b> BLUE MOUNTAIN REGION | <b>8</b> LAKEWOOD                 | <b>13</b> SPOKANE COUNTY           |
| <b>4</b> CENTRAL WASHINGTON   | <b>9</b> NORTH CENTRAL WASHINGTON | <b>14</b> TACOMA                   |
| <b>5</b> FEDERAL WAY-HIGHLINE | <b>10</b> PENINSULA               | <b>15</b> WHATCOM-SKAGIT           |

## SCHOOL LEVEL IMPACT

2021-22 | 2022-23  
SCHOOL YEAR | SCHOOL YEAR

SCHOOLS SERVED

**213** | **223**

DISTRICTS SERVED

**37** | **39**

STUDENTS SERVED

**90,790** | **107,854**

STUDENTS RECEIVING INDIVIDUALIZED SUPPORTS

**4,973** | **6,204**

# OF BASIC NEED ITEMS DISTRIBUTED

**387,187** | **397,015**

## STUDENT RECEIVING INDIVIDUALIZED SUPPORTS DEMOGRAPHICS

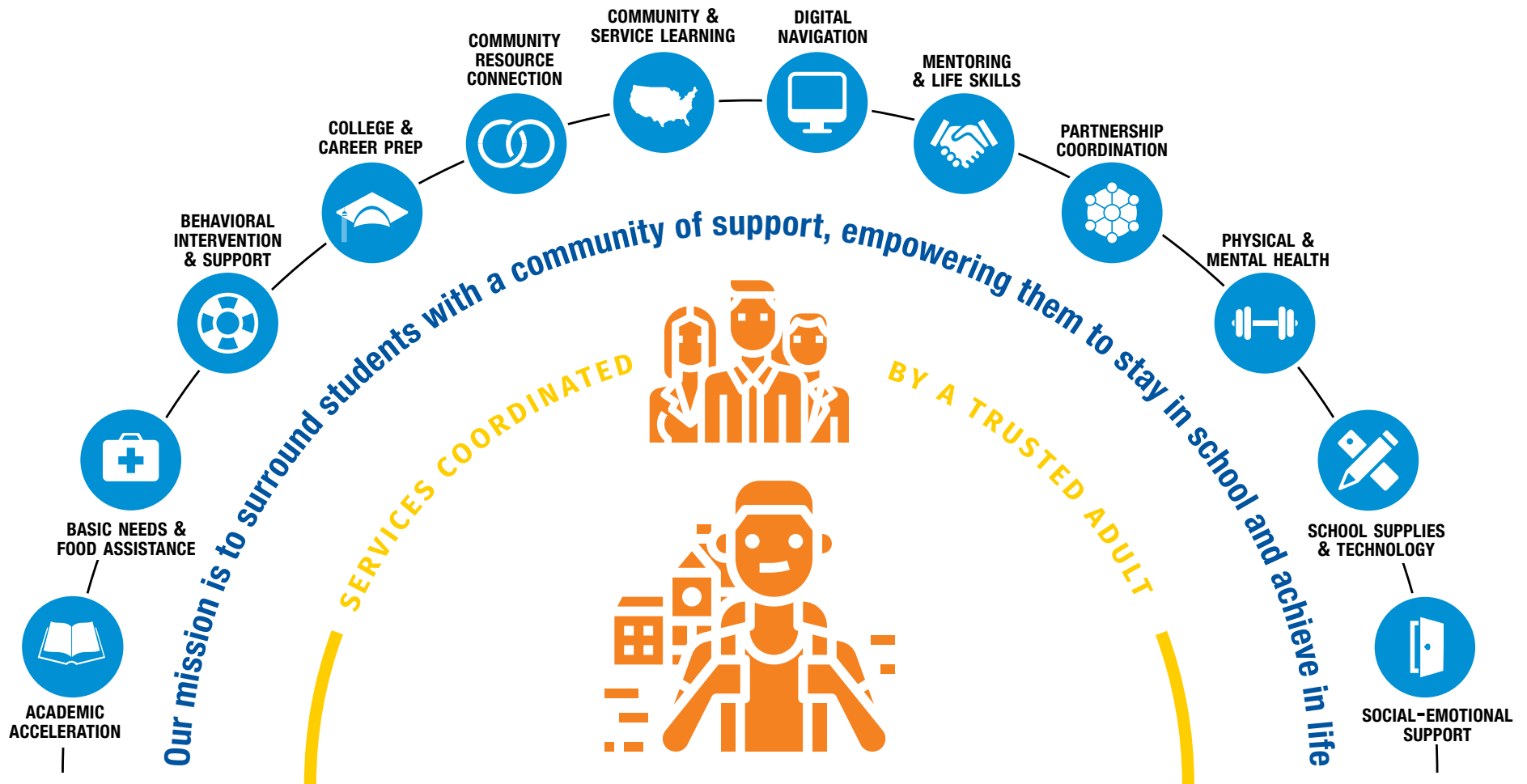
- 32%** HISPANIC/LATINAE
- 30%** WHITE
- 18%** MULTIRACIAL
- 12%** BLACK
- 2%** NATIVE HAWAIIAN/PACIFIC ISLANDER
- 3%** ASIAN
- 2%** OTHER
- 7%** LGBTQIA+
- 82%** EXPOSED TO TRAUMA

*Demographic represents 6,204 students receiving individualized supports during 2022 - 2023.*

# SUPPORT & SERVICES

## Integrated Student Supports

It's a simple idea. Surround students with a community of support. Provide them with access to people and resources they need when they need them. That's integrated student supports (ISS) and it's how every student, regardless of race, gender, ability, zip code, or socioeconomic background has access to what they need to achieve their full potential in school and beyond. Simple and effective.





# IMPACT REPORT

Across the state, site coordinators provide individualized supports to **6,204 students**. Of the **1,096,695 students** enrolled in Washington State Public Schools, **10% (107,854)** are supported through the Communities In Schools of Washington Network.

## STATEWIDE COMPARISON\*

**1,096,695** | **107,854**  
STUDENTS ENROLLED IN WASHINGTON PUBLIC SCHOOLS | STUDENTS RECEIVING CIS SUPPORTS

### LOW INCOME

**50%** | **85%**

### ENGLISH LANGUAGE LEARNERS

**13%** | **26%**

### EXPERIENCING HOMELESSNESS

**3%** | **11%**

### FOSTER CARE

**0.4%** | **3%**

### MIGRANTS

**2%** | **12%**

## STUDENT-LEVEL IMPACT\*\*

### ATTENDANCE



**78%** met or made progress on their attendance goals

### BEHAVIOR/SOCIAL-EMOTIONAL GOALS



**91%** met or made progress on their behavior goals



**91%** met or made progress on their social-emotional goals

### COURSEWORK



**85%** met or made progress on their coursework goals

### GRADUATION STATS



**80%** of Seniors graduated, obtained their GED, or stayed in school



**90%** of K-11 grade students stayed in school or were promoted to the next grade

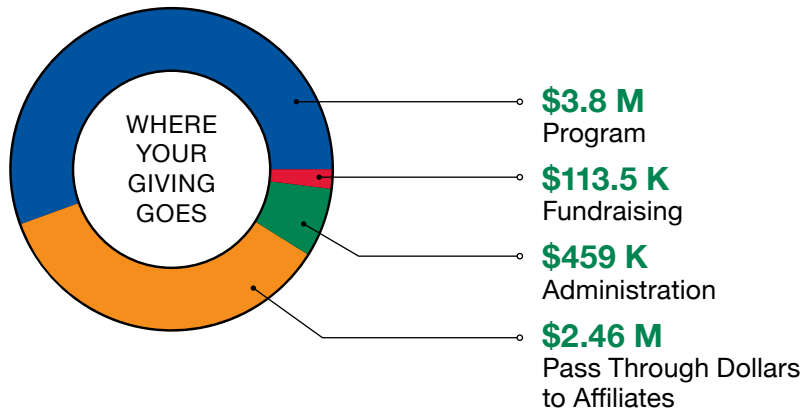
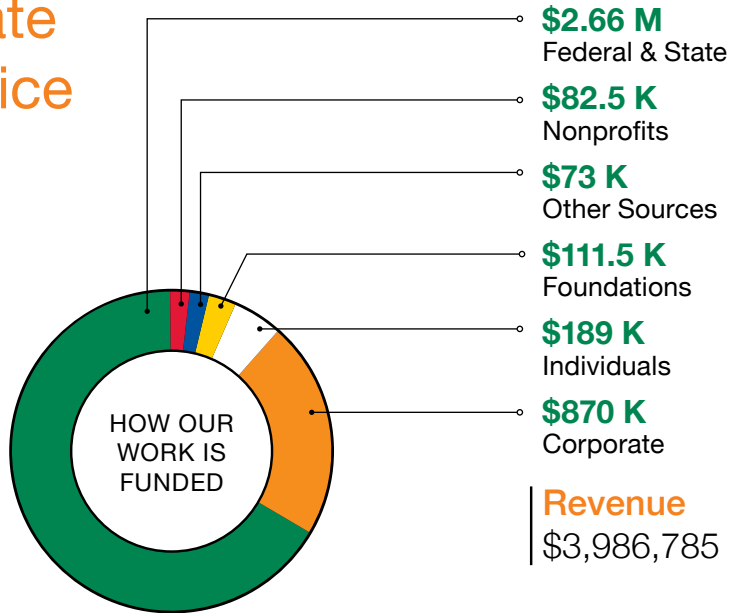
\*Data Points for Washington State provided by OSPI (2022-23)

\*\*Demographic represents 6,204 students receiving individualized supports during 2022 - 2023.

# FINANCIALS

The State Office investment in our network provides vital resources and professional development opportunities through various initiatives such as the Program Manager Retreat, Site Coordinator Convenings, Youth Mental Health First Aid Trainings, Achieve in Life Summit, and the Student Support Institution.

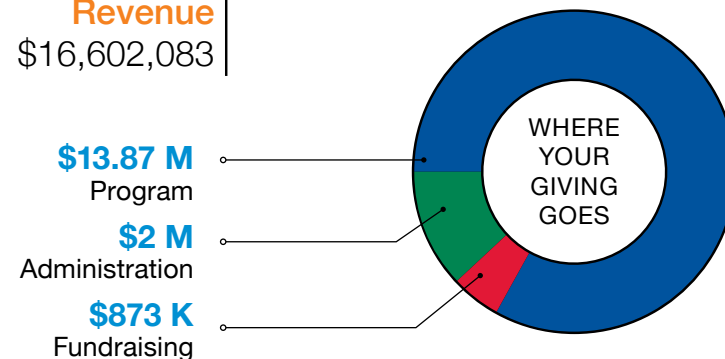
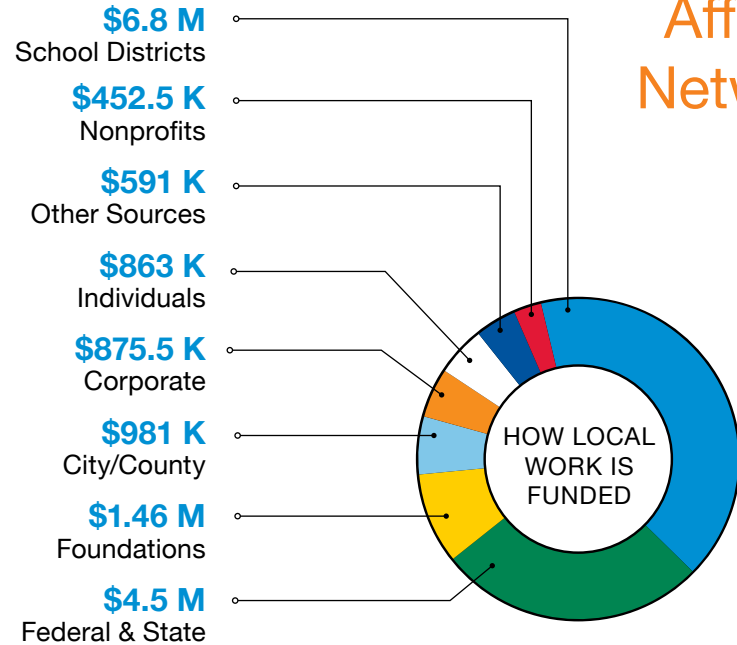
## State Office



Expenses are higher than revenue because we're using grant revenue that was recognized from previous fiscal years.

**Expenses**  
\$6,871,712

## Affiliate Network



**Expenses**  
\$14,128,688

# ABOUT US

Thank you to our past and present State Office Staff, Board of Directors, and Washington State Network Staff for your dedicated time to form the Communities In Schools of Washington family.

To our volunteers and donors, thank you for being #AllinforKids.

## BOARD OF DIRECTORS

As of February 2024

### CHAIR

Julie Kerby  
*Earth Dance Design*

### VICE CHAIR

James Payne  
*U.S. Bank*

### TREASURER

Donna Clark  
*Community Member*

### SECRETARY

Tod Droppelman  
*Costco Wholesale*

Heather Andersen  
*Community Member*

Kristin Barsness  
*Barsness Group*

Steve Bergquist  
*Renton School District /  
State Legislature 11<sup>th</sup> LD*

Corby Casler  
*Downtown Issaquah  
Association*

Hannah Gbenro  
*21st Century Possibilities*

Farrah Kalotay  
*Culture Catalyst*

Doug Martin  
*AT&T Corporation*

## STATE OFFICE STAFF

Elizabeth Hodges  
*(outgoing Jan. '24)  
State Director*

Jeannie Nist  
*(outgoing Aug. '23)  
Deputy Director*

Rebecca Lane  
*Interim State Director*

### PROGRAM MANAGEMENT AND IMPLEMENTATION

Erica Limón-Trefielo  
*Associate Director*

Nikki Ziegler  
*Program and Impact  
Director*

### OPERATIONS

Kayla McKinney  
*Finance and Operations  
Manager*

Nova Hernandez  
*People Partner*

### RESOURCE DEVELOPMENT

Carina Raddatz  
*Development Director*

Nicole Lee  
*(outgoing Feb. '24)  
Development Manager*

Reema Patel  
*Communications Manager*



Scan the QR code to learn more on how you can volunteer, donate and connect.



## THANK YOU TO OUR 2022 TO 2023 SPONSORS



1010 S 336th St #205, Federal Way, WA 98003  
[info@ciswa.org](mailto:info@ciswa.org) | Tax ID: 91-1541026

