



2021-2022 ANNUAL REPORT

In schools & beyond

Our mission is to surround students with a community of support, empowering them to stay in school and achieve in life.



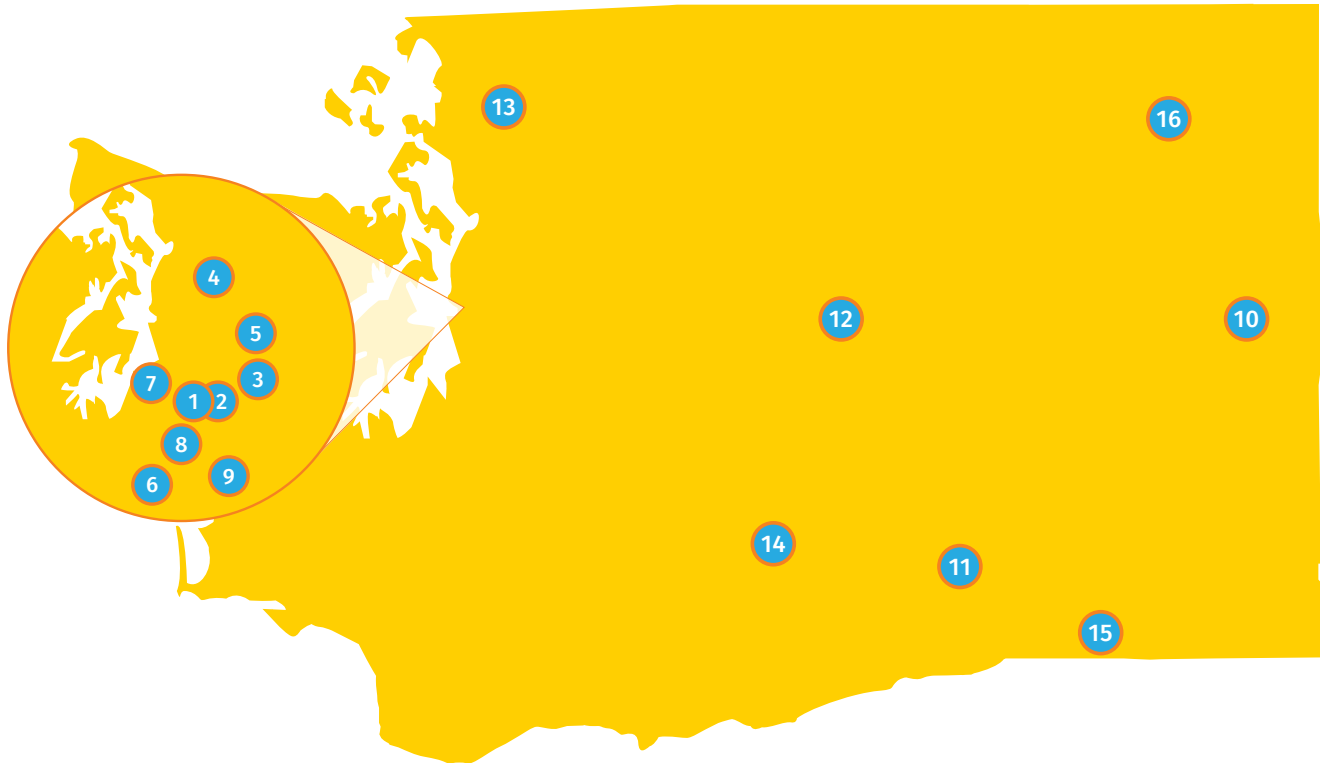
OUR NETWORK REACH

OUR SUCCESSFUL MODEL

OUR IMPACT

OUR FINANCIALS

Our Network Reach



- | | | |
|--|---|--|
| 1. CIS of Washington | 7. CIS of Peninsula | 13. CIS of Whatcom-Skagit |
| 2. CIS of Federal Way-Highline | 8. CIS of Tacoma | 14. CIS of Central WA |
| 3. CIS of Kent | 9. CIS of Puyallup | 15. CIS of the Blue Mountain Region |
| 4. CIS of Seattle † | 10. CIS of Spokane County | 16. CIS of Rural Eastern Washington
ASOTIN-ANATONE, CURLEW,
LIND-RITZVILLE, MARY WALKER*,
NORTHPORT, REPUBLIC |
| 5. CIS of Renton-Tukwila † | 11. CIS of Benton-Franklin | <i>*Mary Walker launching in 2022-23.</i> |
| 6. CIS of Lakewood | 12. CIS of North Central WA | |

† CIS of Renton-Tukwila and CIS of Seattle have merged to become CIS of Greater King County as of July 2023.

STATE BOARD OF DIRECTORS 2021-22

Aline Carnahan
CHAIR
COMMUNITY MEMBER

Julie Kerby
VICE CHAIR
COMMUNITY MEMBER

Donna Clark
TREASURER
COMMUNITY MEMBER

Tim D. Haser
SECRETARY
COSTCO WHOLESAL

Anne Bryant
PHYSICIANS INSURANCE

Corby Casler
COMMUNITY MEMBER

Brenda Croft
RSM US LLP

Dan Donohue
SPECIALIZED
RECRUITING GROUP /
EXPRESS EMPLOYMENT
PROFESSIONALS

Tod Droppelman
COSTCO WHOLESAL

Roshaé Lowe
SOUND DISCIPLINE

Doug C.J. Martin
AT&T CORPORATION

Nicholas T. Mui
STOPLIGHT

James Payne
US BANK

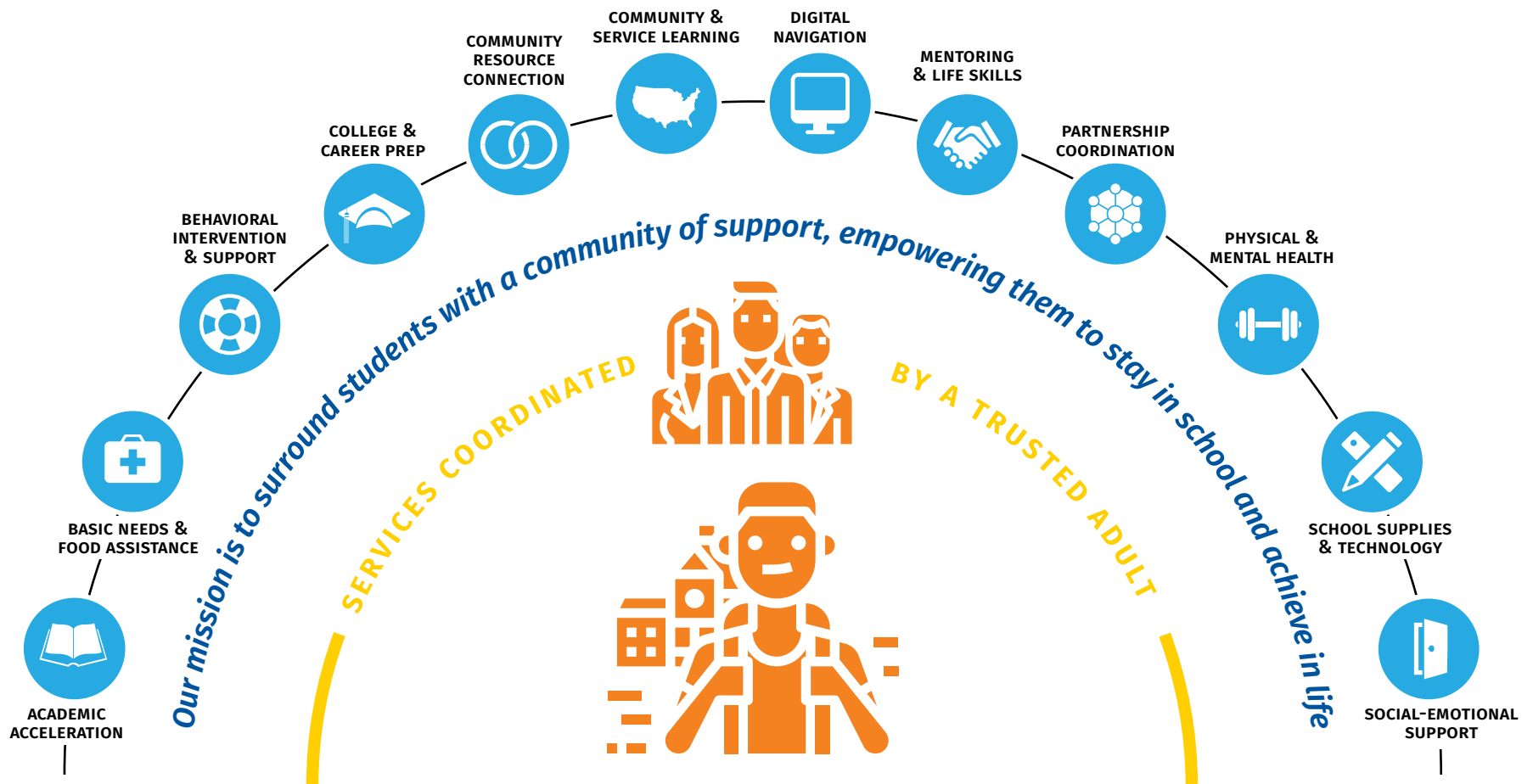
Brett Smith
SNOWFLAKE

Jason Smith
WIEDEN + KENNEDY

Cathy Tabor
COSTCO WHOLESAL

Our Successful Model

Communities In Schools collaborates closely with community partners to ensure that every student has an equitable path to education and community resources and tools they need to unlock their potential and thrive. Working inside schools and across communities our student-centered model of integrated student supports helps create equitable conditions for student learning.





Our Commitment to Equity

Children and youth deserve a caring community that empowers them to achieve their goals in the classroom and beyond. In order to do so, racism and other inequalities in our educational system and society must be acknowledged and addressed. The Communities In Schools of Washington network exists to build on student strengths and overcome systemic barriers through advocacy, partnerships and individualized social-emotional supports.

Our Impact



ihola!

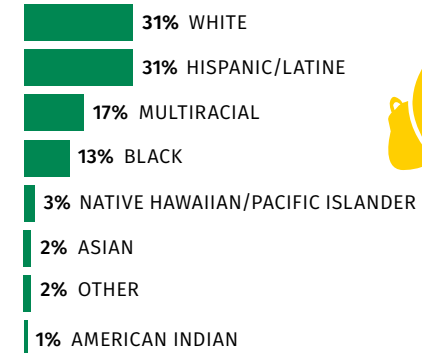
26% English language learners



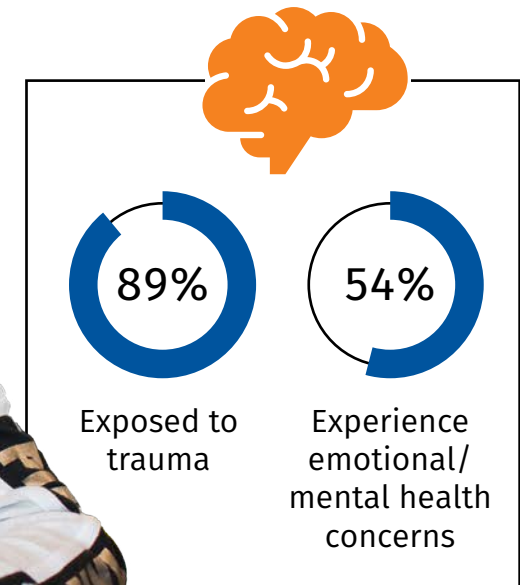
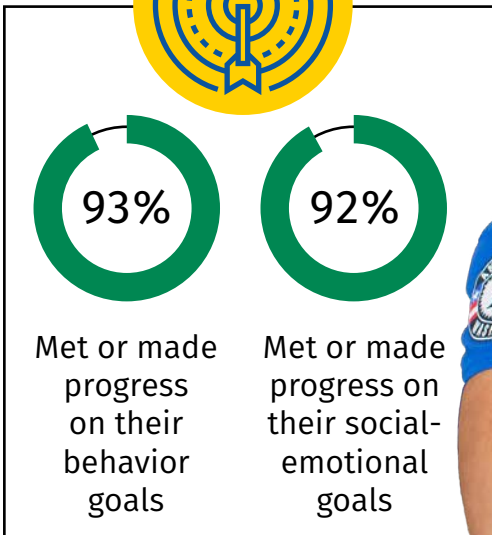
87% Low income



6% LGBTQIA+



69% Students of color



* Demographics represent students case-managed during 2021-2022.

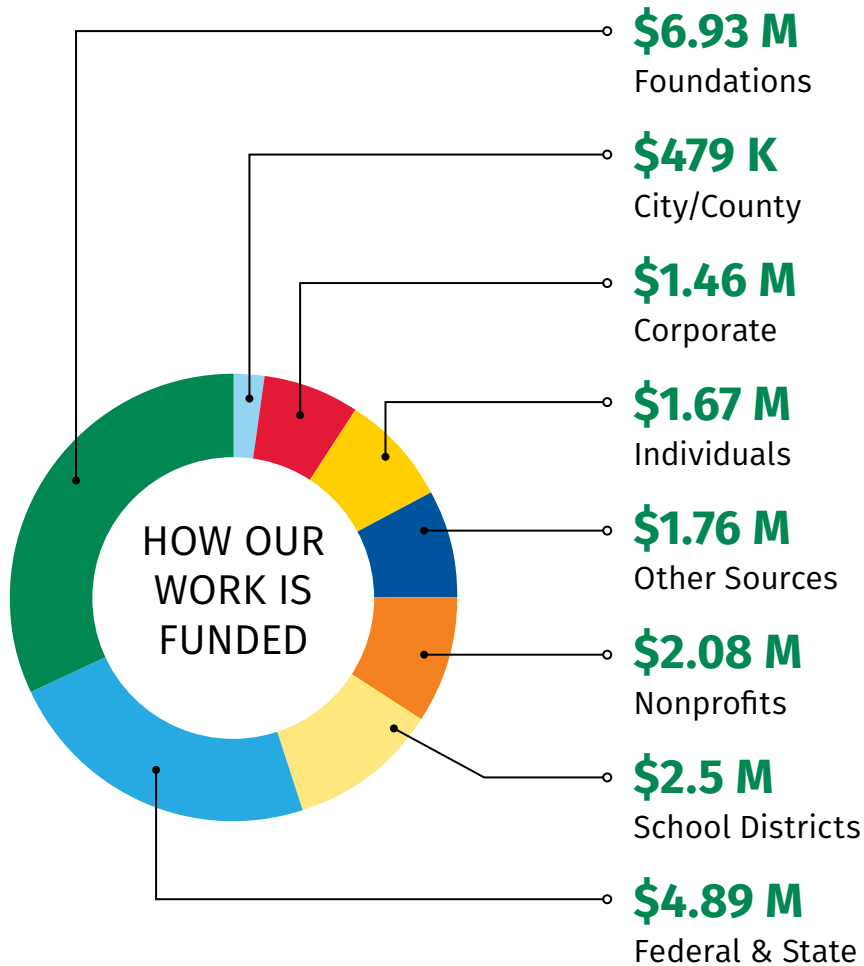


PHOTO CREDIT: CIS OF THE BLUE MOUNTAIN REGION

2021-22 SCHOOL DISTRICT PARTNERS

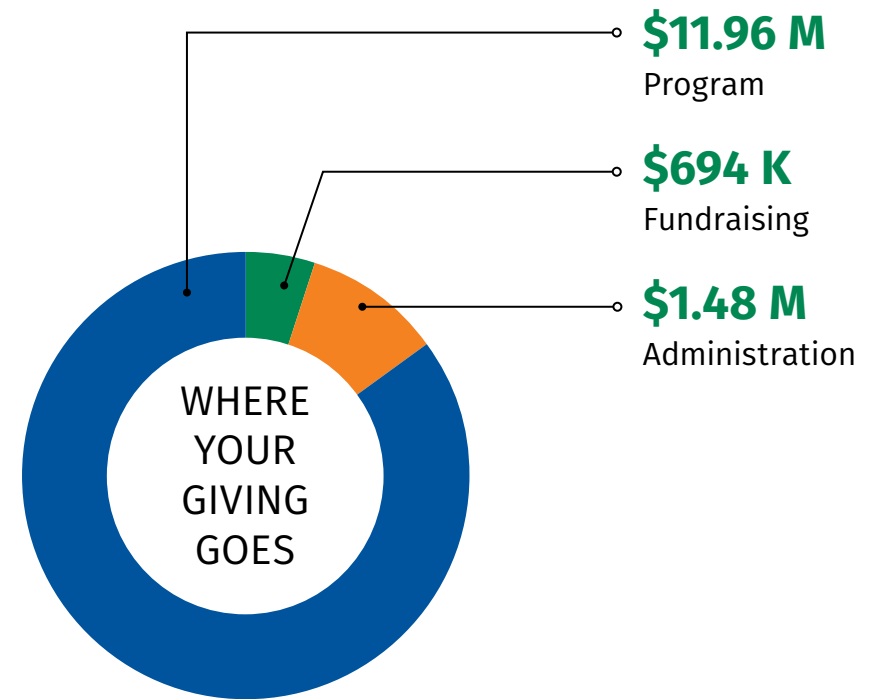
Asotin-Anatone School District	Moses Lake School District
Bellingham School District	Mount Vernon School District
Central Valley School District	Northport School District
Cheney Public Schools	Orondo School District
Clover Park School District	Pasco School District
Curlew School District	Peninsula School District
Federal Way Public Schools	Prosser School District
Ferndale School District	Puyallup School District
Finley School District	Renton School District
Highline Public Schools	Republic School District
Kennewick School District	Richland School District
Kent School District	Seattle Public Schools
Lake Washington School District	Spokane Public Schools
Lind-Ritzville School District	Tacoma Public Schools
Lumen High School (Public Charter)	Tukwila School District
Mary Walker School District*	Walla Walla Public Schools
Medical Lake School District	Waterville School District
Milton-Freewater Unified School District*	Yakima School District
	<i>*Launching CIS programs in 2022-23</i>

Our Financials



Revenue

\$21,766,577



Expenses

\$14,128,688

*Financials include available data from 12 of 15 affiliates (not audited).



**WE ARE GRATEFUL FOR
THE SUPPORT OF ALL OUR
STATE OFFICE DONORS!**

Thank you also to our 2022 CISWA event sponsors, including Denali Advanced Integration, Dell Emc, CDW, Tanium, VMware, AT&T, Fireside Home Solutions, IBM, Juniper Networks, LaSalle Solutions, World Wide Technology, and other corporate partners.