

RESEARCH ARTICLE

Open Access

Australian children's consumption of caffeinated, formulated beverages: a cross-sectional analysis

Kelsey Beckford[†], Carley A Grimes[†] and Lynn J Riddell^{*†}

Abstract

Background: Caffeine is a common additive in formulated beverages, including sugar-sweetened beverages. Currently there are no data on the consumption of caffeinated formulated beverages in Australian children and adolescents. This study aimed to determine total intake and consumption patterns of CFBs in a nationally representative sample of Australian children aged 2–16 years and to determine contribution of CFBs to total caffeine intake. Consumption by day type, mealtime and location was also examined.

Methods: Dietary data from one 24-hour recall collected in the 2007 Australian National Children's Nutrition and Physical Activity Survey were analysed. CFBs were defined as beverages to which caffeine has been added as an additive, including cola-type beverages and energy drinks. Socioeconomic status was based on the highest level of education attained by the participant's primary caregiver. Time of day of consumption was classified based on traditional mealtimes and type of day of consumption as either a school or non-school day. Location of consumption was defined by the participant during the survey.

Results: On the day of the survey 15% (n = 642) of participants consumed CFBs. Older children and those of low socioeconomic background were more likely to consume CFBs (both $P < 0.001$). Amongst the 642 consumers mean (95% CI) intakes were 151 (115–187)g/day, 287 (252–321)g/day, 442 (400–484)g/day, and 555 (507–602)g/day for 2–3, 4–8, 9–13 and 14–16 year olds respectively. Consumers of CFBs had higher intakes of caffeine (mean (95% CI) 61 (55–67)mg vs. 11 (10–12)mg) and energy (mean (95% CI) 9,612 (9,247–9,978)kJ vs. 8,186 (8,040–8,335)kJ) than non-consumers (both $P < 0.001$). CFBs contributed 69% of total daily caffeine intake. CFB intake was higher on non-school days compared with school days ($P < 0.005$) and consumption occurred predominantly at the place of residence (56%), within the "dinner" time bracket (17:00–20:30, 44%).

Conclusions: The consumption of CFBs by all age groups within Australian children is of concern. Modifications to the permissibility of caffeine as a food additive may be an appropriate strategy to reduce the intake of caffeine in this age group. Additional areas for intervention include targeting parental influences over mealtime beverage choices.

Keywords: Caffeine, Dietary, Beverages, Dietary, Soft drink, Child, Adolescent, Australia

Background

Caffeine, 1,3,7-trimethylxanthine, is a naturally occurring alkaloid found in plant materials such as coffee beans, tea leaves, cola nuts and cacao beans [1]. Caffeine is a common additive in formulated beverages, including sugar-sweetened beverages (SSBs), artificially-sweetened beverages (ASBs) and energy drinks [2]. Variations in the regulation of caffeine's addition to beverages exist

internationally, with countries differing in both the allowable concentration of caffeine in beverages (ranging 150 mg/L–320 mg/L) and the types of beverages to which it can be added [2–5]. Addition of caffeine to commercial beverages in Australia is strictly regulated by Food Standards Australia New Zealand (FSANZ), with no more than 145 mg/kg permitted in cola-type formulated beverages [6], and 320 mg/L in energy and sports drinks [7]. In response to the increase in caffeine consumption being observed internationally [8], food regulatory authorities in Australia and New Zealand [9], Canada [9] and the United States [10] are currently

* Correspondence: lynn.riddell@deakin.edu.au

[†]Equal contributors

Centre for Physical Activity and Nutrition Research, School of Exercise and Nutrition Sciences, Deakin University, 221 Burwood Highway, Burwood, Melbourne, Victoria 3125, Australia

reviewing their country specific regulations concerning caffeine as an additive to food products.

Both the naturally occurring and artificial forms of caffeine exert similar physiological effects on humans, as there is no difference in the chemical structure between the two forms [1]. In modest doses of up to 400 mg, caffeine consumption has been associated with positive post-ingestive effects on mood, alertness and performance in adults [11]. However consumption at doses above these levels may result in increased anxiety levels as well as decreased physical and cognitive performance [12]. Currently there are no recognised health-based guidance values on recommended daily intakes for caffeine in Australia and New Zealand, however a recent review by the FSANZ caffeine expert working group found that doses of caffeine at approximately 3 mg per kilogram of bodyweight led to increased anxiety levels in children [2]. This is similar to recommendations made by Health Canada that children under twelve years of age should not consume more than 2.5 mg per kilogram of bodyweight [9]. Using the current Australian National Health and Medical Research Council's reference ranges for bodyweight [13], this would equate to approximately 39–171 mg of caffeine for 2–16 year olds.

Studies from the UK, US and Canada in children and adolescents have shown that formulated beverages are the most commonly consumed form of caffeine amongst children and adolescents [14–16]. This is concerning as these beverages are often energy-rich, and nutrient poor [17], and have been linked with adverse health outcomes in children and adolescents, including dental caries [18], bone health [19], and in the case of SSBs, overweight and obesity [20–23]. Manufacturers claim that caffeine is added formulated beverages, including ASBs and SSBs, as a flavouring agent [24]. This has been questioned by researchers, who have determined that most consumers are unable to detect caffeine in beverages on the basis of taste [17,25]. Hence it has been hypothesised that caffeine is added to beverages in order to promote repeat consumption, due to the mildly addictive nature of the caffeine compound [26]. Repeat consumption of energy-rich, nutrient poor SSBs, promoted by caffeine, could potentially lead to increased quantities being consumed, and, in turn, an increased risk of adverse health outcomes [26,27].

At present there are no data available regarding intake of caffeinated, formulated beverages (CFBs) in Australian children and adolescents. Given the potential adverse health outcomes associated with high intakes of these beverages, monitoring of CFB intake in children is important. The aims of this study were: i) to determine intake of CFBs, where caffeine has been added as an ingredient, and subtypes of these beverages (i.e. ASBs, SSBs, and energy drinks) in a nationally representative

sample of Australian children aged 2–16 years; ii) to determine the contribution of these beverages to total caffeine intake and; iii) to examine where (location) and when (meal times and school day vs. weekend day) CFBs are consumed.

Methods

Study design

This study used data collected from the 2007 Australian Children's Nutrition and Physical Activity Survey (CNPAS). CNPAS was a cross-sectional study on children's dietary and physical activity behaviours. Full details of the CNPAS sampling and survey methodologies have been previously reported [28], as has our own analysis of these data [29]. In brief, a nationally representative sample of 4,487 children aged 2–16 years were recruited for the survey, using a multistage quota sampling framework [28]. Data were collected between February and August 2007. Ethics was approved for this survey by the National Health and Medical Research Council Registered Ethics Committees of Commonwealth Scientific and Industrial Research Organisation and the University of South Australia. For all participants consent was obtained from the primary caregiver. In addition, in those aged 14–16 years assent was obtained [28].

Anthropometry

Height and weight were collected using standardized protocols [28]. Body Mass Index (BMI) was calculated as weight (kg) divided by height (m²). Weight status was determined using the International Obesity Task Force cut-off points for BMI for children [30,31].

24-hour dietary recall

Dietary data were collected using a computer assisted 3-pass 24-hour dietary recall, during which time all data pertaining to the time and location of consumption of each food and beverage item were collected [28]. Portion sizes were estimated by using a validated food model booklet and standard household measures. The 24-hour dietary recall was conducted with the primary caregiver of participants aged <9 years and with the study child in participants aged 9 years and over [28]. The three-pass dietary recall method is a standardised procedure used in Australian and New Zealand national nutrition surveys, including a national survey of New Zealand schoolchildren 5–14 years of age [32]. Further details of the dietary collection methodology can be found in the CNPAS user guide [28]. Energy and caffeine intakes were determined using the AUSNUT2007 nutrient composition database, which was specifically developed for the CNPAS [33].

Definition of day type, meal times and location of consumption

The type of day on which each participant recalled their dietary intake for was recorded as a weekday, weekend, public holiday or school holiday. In the current analysis non-school days were defined as a weekend, public holiday or school holiday day and school days were defined as a weekday. In the absence of participant defined meal times, classification was based on the time of reported consumption. Meal times were defined as follows: breakfast: 05:00 – 08:59, morning tea 09:00 – 11:29, lunch: 11:30 – 13:59, afternoon tea: 14:00 – 16:59, dinner: 17:00 – 20:29 and supper: 20:30 onwards. Location of consumption was defined by the participant during the 24 hour recall as either: i) place of residence: incorporating “home” and “other residence”, for example a family member or friend’s home, ii) place of purchase, iii) institution, iv) during a leisure activity, v) during transport and vi) other/no data available.

Beverage classification

The CNPAS food group coding system [28] was used to classify beverage items consumed during the survey. All food items consumed on the day of the survey were assigned an eight-digit food code, which linked each food item to nutrient information within the AUSNUT2007 nutrient composition database [33]. More details on the development of these codes can be found in the AUSNUT 2007 explanatory notes.

Formulated beverages were defined as all beverages, including caffeinated and non-caffeinated, falling within the “soft drinks and flavoured mineral waters” and “electrolyte, energy and fortified drinks” food code categories [34]. Aggregation of the volume of these beverages consumed (g/day) allowed for the determination of total formulate beverage intake. In addition, the proportion of total soft drink consumed as CFBs was calculated. CFBs were defined as formulated beverages to which caffeine has been added as an ingredient in accordance with the FSANZ Food Standards Code, which restricts caffeine’s use as an additive to cola based beverages and energy drinks [6,7]. Beverages in which caffeine occurs naturally (e.g. tea, coffee, chocolate beverages) were excluded from the CFB definition. The AUSNUT2007 database was examined to determine all beverages consumed on the day of the survey which contained added caffeine, as indicated by the caffeine content of beverages and ingredients list. The amount of these beverages were aggregated to determine total CFB consumption (g/day) as well as caffeine contribution from CFBs (mg/day). Proportion of total caffeine consumed from CFBs was then calculated. Daily caffeine contribution from all beverage sources was determined by aggregating the amount of caffeine consumed from beverages within the “non-

alcoholic beverages” food group. This amount was then deducted from total daily caffeine intake, to determine caffeine intake from food sources.

Participants who consumed any CFB (i.e. >0 g) on the day of the survey were classified as a CFB consumer. CFBs were further broken down into different sub-types; including energy drink and non-energy drink (including soft drink and electrolyte beverages) categories. The AUSNUT2007 database was used to define beverages as artificially-sweetened (AS) if labelled ‘intense sweetened’, for example “soft drink, cola flavour, intense sweetened”, which includes beverages marketed as ‘sugar free’ such as Coca-Cola zero or Pepsi max. If this was not specifically defined within the database, for instance “soft drink, cola flavour”, the beverages were assumed to be sugar sweetened (SS), and labelled as such [34].

Data analysis

All data were analysed using STATA/SE software (version 12.0, Statacorp, College Station, Texas). Statistical significance was set at $P < 0.05$. To account for the complex sampling frame of the CNPAS the Stata svy command was used, specifying cluster variable (post code), stratum variable (region), and population weightings (age, gender, region).

Frequency (n) and weighted percentages were used to determine the proportion of participants consuming CFBs per capita and stratified by gender, age group, SES, and weight status category. Chi-squared tests were used to assess differences in CFB consumption across categorical variables. Descriptive statistics, mean (95% CI), median (IQR), 90th percentile, and range were used to describe CFB (g/day) (total, AS-CFB and SS-CFB), soft drink (g/day) and caffeine intake (mg/day), in the whole sample as well as stratified by age group, gender and SES. Independent T-tests were used to determine significant differences in total caffeine and energy intakes between consumers and non-consumers of CFB. Histograms and box and whisker plots were used to assess the normality of CFB intake data. On review it was determined that CFB intake (g/day) was highly skewed, hence in addition to reporting CFB consumption per capita, CFB intake was also reported within consumers only.

Within the consumers’ only data, independent t-tests were used to examine differences in intakes by gender and day type, and linear regression analysis was used to assess differences in intakes across age groups and SES categories.

Results

Participant characteristics

Table 1 describes the main demographic characteristics and overall energy and caffeine intakes of participants. Overall, 78% of consumers reported consuming caffeine

Table 1 Demographic characteristics and nutrient intake in Australian children aged 2–16 years by consumption of CFB (n = 4487)

Demographic characteristic/ Nutrient intake	Total sample, n(%) ^a	CFB consumer, n(%) ^a	CFB non-consumer, n(%) ^a	p ^b
No. of participants	4487	642(15)	3845(85)	
Gender				
Male	2249(51)	351(55)	1898(50)	0.06
Female	2238(49)	291(45)	1947(50)	
Age group (years)				
2-3	1071(12)	48(3)	1023(14)	<0.001
4-8	1216(34)	105(20)	1111(36)	
9-13	1110(33)	204(41)	906(32)	
14-16	1090(21)	285(36)	805(18)	
SES category				
Low	1414(30)	253(38)	1161(29)	<0.001
Mid	1583(36)	232(37)	1351(36)	
High	1490(34)	157(25)	1333(35)	
Weight classification^c				
Underweight	212(5)	30(5)	182(5)	0.008
Healthy weight	3267(72)	434(66)	2833(74)	
Overweight	761(17)	119(19)	642(17)	
Obese	247(6)	59(10)	188(5)	
Energy intake (kJ/day),				<0.001
Mean	8394	9613	8187	
(95% CI)	(8250–8537)	(9247–9977)	(8039–8335)	
Total Caffeine intake (mg/day),				<0.001
Mean	18	61	11	
(95% CI)	(17–20)	(55–67)	(10–12)	
Total Caffeine intake (mg/kg)^d				<0.001
Mean	0.43	1.33	0.27	
(95% CI)	(0.39–0.46)	(1.20–1.45)	(0.25–0.30)	

CFB - Caffeinated, formulated beverage; SES – Socioeconomic Status.

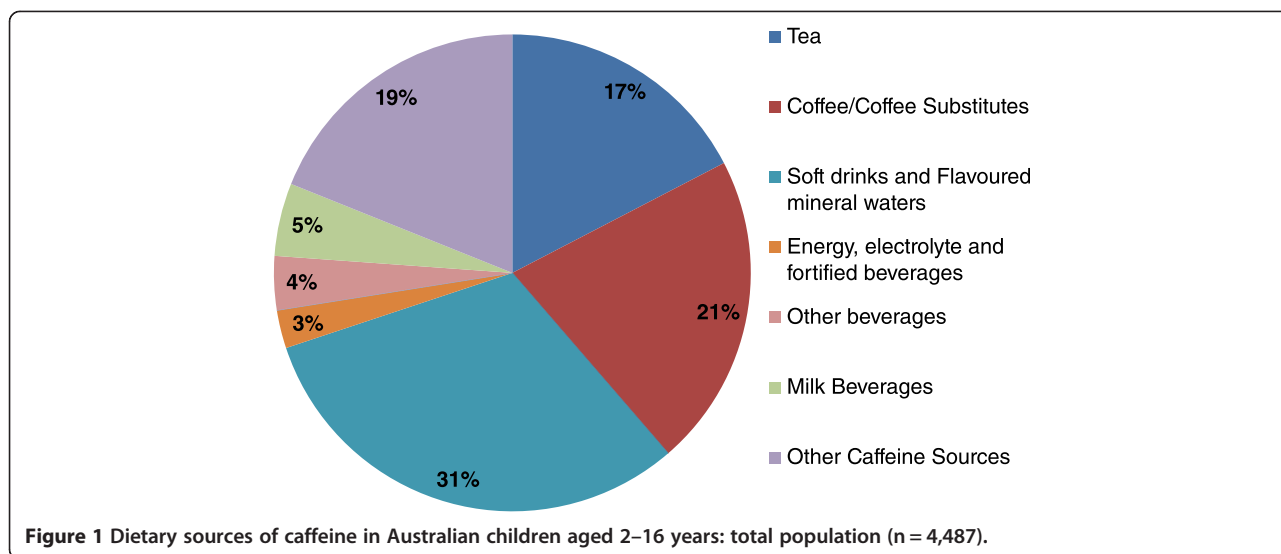
^a% weighted for age, gender and region; ^bP values determined using χ^2 and independent t-test; ^cWeight classification based on the International Obesity Task Force BMI reference cutoffs [30,31]; ^dmg/kg bodyweight of participant.

on the day of the survey (data not shown), with 15% of participants classified as CFB consumers. Older children were more likely to consume CFBs than younger children ($P < 0.001$), and children from a low SES background were more likely to consume CFBs compared with those from a high SES background ($P = 0.001$, Table 1). There was a significant association between weight status and CFB consumption, whereby CFB consumers were more likely to be overweight or obese ($P = 0.008$, Table 1). CFB consumers had significantly higher caffeine and energy intakes, compared with non-consumers ($P < 0.001$, Table 1). Total caffeine intake per kilogram bodyweight was also found to be significantly

higher amongst CFB consumers than non-consumers ($P < 0.001$, Table 1).

Dietary sources of caffeine: all participants

Including all participants, mean caffeine intake was 18 mg/day (Table 1). By age group caffeine intakes (mean (95% CI) mg/day) were 3 (2.9–3.8), 8 (7.2–9.0), 19 (17.1–21.4), and 42 (37.3–46.1) in 2–3, 4–8, 9–13, and 14–16 years, respectively. The majority of caffeine was consumed through beverages (81%) and the remainder (19%) from food sources (Figure 1). A brief examination of the AUSNUT2007 database revealed that food sources of caffeine included items such as baked products



containing chocolate or cocoa powder. CFBs contributed 34% to daily caffeine intake (Table 2).

CFB intake: all participants

Table 2 describes CFB consumption per capita by age group. Average intake was 6 g/day in 2-3 year olds and 140 g/day in 14-16 year olds. The 90th percentiles of intake were 0, 0, 391, and 522 g/day in 2-3, 4-8, 9-13, and 14-16 year age groups, respectively. The proportion of formulated beverages which were caffeinated was higher with increasing age, accounting for just over half of all formulated beverages consumed by 14-16 year olds (Table 2). The majority of CFB consumed was of the sugar-sweetened variety (75-80%).

CFB intake: CFB consumers only

Table 3 shows beverage consumption data for the CFB consumers (n = 642). Males had significantly higher CFB intakes than females (mean (95% CI) 475 (442-508) g/day

vs. 400 (362-437) g/day, P < 0.002). CFB accounted for 83% of all formulated beverages consumed and older children were found to have significantly higher intakes of CFB, compared to younger children (P < 0.001). The majority of CFB consumed was sugar-sweetened, with 75-80% of CFBs consumed as SS-CFB.

Figure 2 shows the range of CFB intakes in consumers only. Median (IQR) intakes were 125 (78-176), 261 (170-391), 391 (261-569), and 411 (375-657) g/day for the 2-3, 4-8, 9-13, and 14-16 year old age groups respectively. The 90th percentiles of intake were 304, 513, 750, and 1,043 g/day with maximum intakes reaching 433, 1,000, 2,013, and 2,347 g/day for each of the four age groups respectively. Of the top tenth percentile of CFB consumers (n = 64), median (IQR) intake of total daily caffeine was 104 (82-127) mg/day. The majority (69%) of the consumers within the top tenth percentile fell within the 14-16 year old age group. Within CFB consumers there was no difference in actual intake (g/d)

Table 2 CFB consumption in Australian children aged 2-16 years, by age group: total population (n = 4487)

CFB consumption	All (n = 4487)	Age group			
		2-3 (n = 1071)	4-8 (n = 1216)	9-13 (n = 1110)	14-16 (n = 1090)
CFB intake (g/day)					
Mean	64	6	24	79	140
(95% CI)	(56-71)	(4-9)	(18-30)	(61-96)	(119-162)
Proportion of caffeine from CFB (%)*	34	17	28	38	33
Proportion of total formulated beverages as CFB (%)*	44	24	34	40	55
Proportion of all CFB as SS-CFB (%)*	77	75	79	80	75
Proportion of all CFB as AS-CFB (%)*	23	25	21	20	25

CFB - Caffeinated, formulated beverage; SS-CFB - Sugar-sweetened caffeinated formulated beverage; AS-CFB - Artificially-sweetened caffeinated, formulated beverage.

*Population proportion data - no measure of variability (i.e. 95% CI) available.

Table 3 CFB consumption in Australian children aged 2–16 years, by age group: CFB consumers only (n = 642)

CFB consumption	All (n = 642)	Age group			
		2-3 (n = 48)	4-8 (n = 105)	9-13 (n = 204)	14-16 (n = 285)
CFB intake (g/day),					
Mean	441	151	287	442	555 ^a
(95% CI)	(413–469)	(115–187)	(252–321)	(400–484)	(507–602)
Caffeine from CFB (mg/d)					
Mean	42	14	27	41	55 ^a
(95% CI)	(39–45)	(11–17)	(22–31)	(37–44)	(48–62)
Proportion of caffeine from CFB (%)*	69	73	74	73	65
Proportion total formulated beverages as CFB (%)*	83	81	86	84	81
Proportion of CFB as SS-CFB (%)*	72	75	79	80	75
Proportion of CFB as AS-CFB (%)*	23	25	21	20	25

CFB – Caffeinated, formulated beverage; SS-CFB – Sugar-sweetened caffeinated, formulated beverage; AS-CFB – Artificially-sweetened caffeinated, formulated beverage.

*Population proportion data – no measure of variability (i.e. 95% CI) available.

^aLinear regression with age group entered as an indicator variable P < 0.001.

of CFBs consumed across the three SES categories (Table 4, P = 0.2), with the proportion of total formulated beverages as caffeinated beverages also remaining stable (~83%). Approximately 97% of all CFBs were consumed as non-energy drinks (i.e. soft drinks and electrolyte beverages), with 73% consumed as sugar-sweetened non-energy drinks (data not shown).

Consumption of CFB by type of day, meal time and location: CFB consumers only

Type of day

CFB consumers were significantly more likely to report consuming CFBs on a non-school day compared to a school day (P < 0.001). In addition, the amount of CFB consumed (g/day) was significantly higher on non-

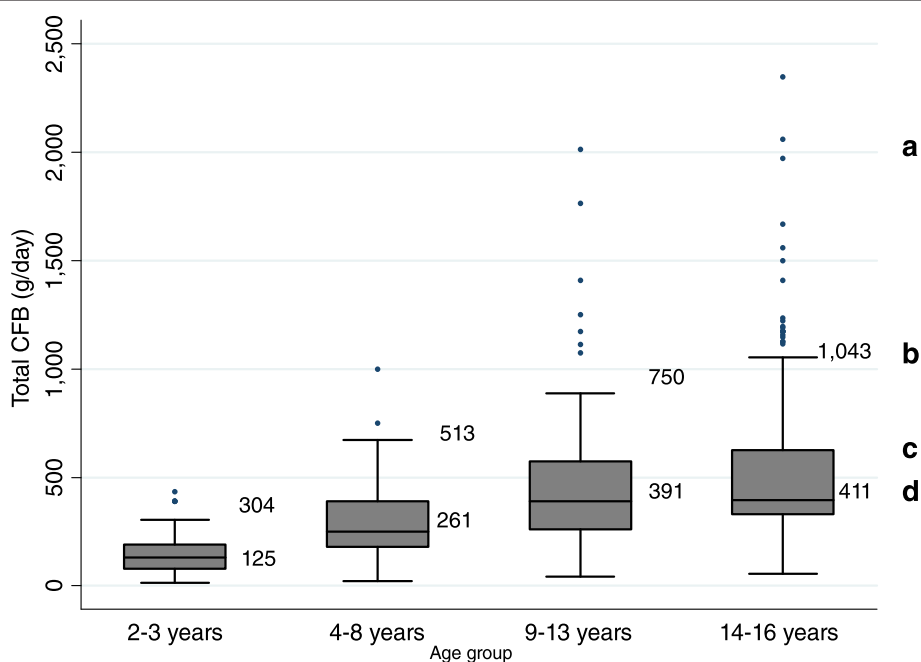


Figure 2 CFB consumption (g/day) in Australian children aged 2–16 years by age group: CFB consumers only (n = 642). a: Outlier values; b: 90th Percentile; c: 75th Percentile; d: Median.

Table 4 CFB consumption in Australian children aged 2–16 years by socioeconomic status category: CFB consumers only (n = 642)

CFB consumption	SES category		
	Low SES (n = 253)	Mid SES (n = 232)	High SES (n = 157)
CFB intake (g/day)			
Mean	420	461	445
(95% CI)	(390–450)	(408–514)	(400–490)
Caffeine from CFB (mg/day)			
Mean	40	45	42
(95%CI)	(37–43)	(39–51)	(38–47)
% Total Formulated beverages as CFB	79	86	85

CFB – Caffeinated, formulated beverage; SES – Socioeconomic Status.

school days, when compared to school days ($P < 0.005$, Table 5).

Meal time

The majority of CFBs were consumed between 17:00–20:30 (44%), followed by 11:30–13:59 (27%), times traditionally associated with dinner and lunch respectively (Figure 3). When stratified by age group, consumption did not differ from the overall observed trend (data not shown).

Location

Figure 4 shows CFB consumption by location. Place of residence was the most popular location of consumption with ~56% of all CFBs consumed here, followed by consumption at a leisure activity (21%) (Figure 4). When stratified by age group, older children had a greater variety in their location of consumption with increased consumption during transport and leisure activities, however place of residence remained the predominant location of consumption across all age groups (data not shown).

Discussion

These are the first data available describing consumption patterns of CFBs in a nationally representative sample of Australian children and adolescents. It is evident that

Table 5 CFB consumption in Australian children aged 2–16 years by type of day: CFB consumers only (n = 642)

	School day (n = 292)	Non-school day (n = 350)
CFB intake (g/day)		
Mean	392	480*
(95% CI)	(364–421)	(443–518)

CFB – Caffeinated, formulated beverage.

*T-test: $P < 0.005$.

consumption of CFBs occurs across all ages (2–16 years) and significantly increased total caffeine intake in children and adolescents. Although the data revealed that older children were more likely to consume CFBs, consumption still occurred in the younger age groups with 4% of 2–3 year olds and 8% of 4–8 year olds consuming CFBs on the day of the survey. The majority of CFB consumption occurred within the home environment between 17:00–20:30 on non-school days. In the present study children of a low socioeconomic background were significantly more likely to consume CFBs, a result which echoes previous findings of research conducted on SSB consumption using the same sample of Australian children and adolescents [35,36].

It has previously been hypothesized that the addition of caffeine in beverage formulation may lead to increased consumption of beverages associated with adverse health outcomes [26,27]. A recent randomised control trial by Keast et al. supports this hypothesis whereby the inclusion of caffeine within a SSB resulted in a significant increase in SSB consumption despite study participants' inability to detect any taste difference between beverages [26]. Within the present study the most commonly consumed form of CFBs were sugar-sweetened, non-energy drinks. Consumers of CFB were found to have higher energy intakes and were more likely to be overweight or obese. SSBs have been associated with overweight and obesity [20-23]. Previous work has indicated that the addition of caffeine to formulated beverages results in increased consumption of SSB and removal of caffeine may result in reduced energy intake from SSB in this age group [26,27]. As 44% of all formulated beverages consumed within the current study were caffeinated, removing or decreasing caffeine in beverage formulation has the potential to decrease consumption of these beverages. Over time this may help to counter the trajectory of unnecessary weight gain in children and adolescents [27].

It was also evident that CFB consumers had significantly higher caffeine intakes than non-consumers, indicating that CFB consumption significantly increases total caffeine intake. Therefore, reducing the permissible level of caffeine as an additive in beverage formulation could reduce overall caffeine intake in children and adolescents. Although the total caffeine intakes observed within the current study are below recommended intake levels per kilogram of bodyweight [2], these data represent intakes from 2007. Changes in formulated beverage production and marketing have occurred since this time, with a wider variety of CFBs available within the Australian market and an increase in portion sizes also evident [8]. Therefore, it is important that the consumption of CFBs continue to be monitored to ensure that the practice of adding caffeine to commonly consumed beverages available to children and adolescents does not put them at risk of exceeding these

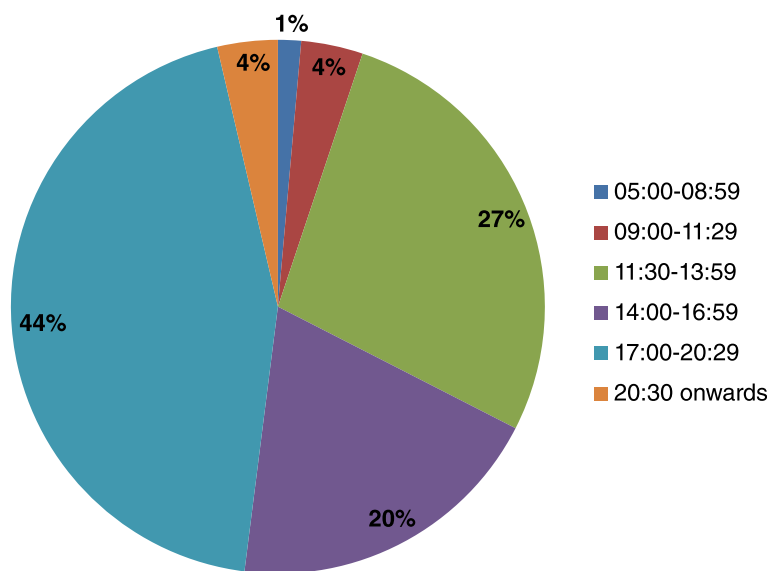


Figure 3 CFB consumption in Australian children aged 2–16 years by meal time: CFB consumers only (n = 642).

recommendations. The results from this study provide important baseline data for tracking changes in consumption over time. By monitoring consumption patterns over time, potential areas for intervention can also be identified.

Potential areas for intervention

Identifying the demographic factors associated with consumption of CFBs may help to identify intervention points. Our results reflect those of a similar study conducted within the same population group by Hafekost et al. (2011), who found that older children were more likely to consume SSBs and that consumption of these beverages was highest at home [36]. Similarly, in the present study we observed that 56% of CFBs were

consumed at a place of residence and 44% of CFBs were consumed within the “dinner” time bracket, where parental involvement in food choices are likely. In addition to modifying current food regulations that permit the inclusion of caffeine as an additive in beverage formulation, the results from this study suggest the need to target parental influences over beverage choices with meals. As research has shown that parental food choices can significantly influence food and beverage consumption in children through both exposure and role-modelling [37,38], targeting parental acceptance of CFBs as a mealtime beverage and promoting alternative beverage options such as water and unflavoured milk may lower children’s consumption of CFBs. These interventions should be in a

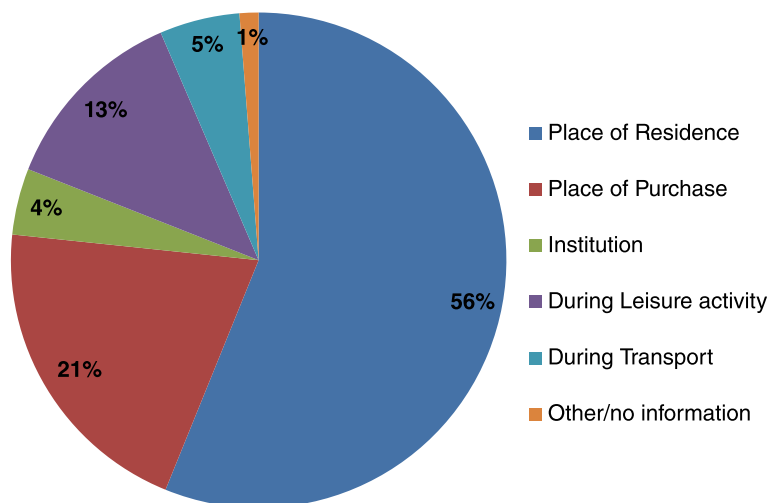


Figure 4 CFB consumption in Australian children aged 2–16 years by location of consumption: CFB consumers only (n = 642).

form that is accessible and meaningful to older children and adolescents across a range of SES backgrounds.

Limitations of this research

The main strength of this study is the use of data from the Australian National Nutrition and Physical Activity Survey, a large nationally representative sample of Australian children and adolescents. However, despite the robust sampling procedures used, participation was voluntary and thus some differences exist between the sample population and the broader Australian population; participants were typically from higher income earning households, than the average population [28]. The use of 24-hour recalls also provides some limitations as they are subject to participant recall bias and underreporting [39]. However previous analyses of the 2007 CNPAS data indicated that under-reporting in this sample of children was only evident in 14–16 year olds, and the extent of under-reporting within this age group was proven to be minimal [29].

Data for this study was collected over a six-month period from February to August, encompassing three different seasons. In Australia this covers summer, autumn and winter. Although this minimises the possible effect of seasonality on results, it should be noted that seasonal variation may influence fluid consumption and this may limit the results of this study. Due to the wide age range of participants within the survey and the lack of participant defined meal times, some misclassification of meal times may have occurred and consumption patterns reported across meal time may have been incorrectly estimated.

Conclusions

Consumption of CFBs occurred across all age groups and was associated with increased energy and caffeine intakes. Modifications to the permissibility of caffeine as a food additive may be an appropriate strategy to reduce the intake of caffeine and CFB in this age group. These data provide insights into potential intervention targets to lower intakes of CFBs, including parental influences over beverages choices with meals. These interventions should be in a form that is accessible and meaningful to older children and adolescents across a range of SES backgrounds.

Abbreviations

CFB: Caffeinated, formulated beverage; SSB: Sugar-sweetened beverage; SS-CFB: Sugar-sweetened caffeinated, formulated beverage; ASB: Artificially-sweetened beverage; AS-CFB: Artificially-sweetened caffeinated, formulated beverage; FSANZ: Food standards Australia New Zealand; CNPAS: Children's nutritional and physical activity survey; SES: Socioeconomic status; AHS: Australian Health Survey.

Competing interests

The authors declare that they have no competing interest.

Authors' contributions

KB conducted the statistical analysis and wrote the manuscript. LJR and CAG designed the research, helped with data interpretation, revised the manuscript and provided significant consultation. All authors have read and approved the final manuscript.

Acknowledgements

We thank Dr John Reynolds for his guidance with statistical analyses. We acknowledge Commonwealth Scientific Industry Research Organisation, University of South Australia, and the Department of Health and Ageing in the collection of data. We acknowledge the Australian Social Science Data Archive for the availability of the data sets. We declare that those who carried out the original analysis and collection of the data bear no responsibility for the additional analysis or interpretation of them.

Received: 7 May 2014 Accepted: 19 January 2015

Published online: 31 January 2015

References

1. Heckman MA, Weil J, de Mejia EG. Caffeine (1, 3, 7-trimethylxanthine) in foods: a comprehensive review on consumption, functionality, safety, and regulatory matters. *J Food Sci.* 2010;75:R77–87.
2. Consumer Information: Caffeine. [http://www.foodstandards.gov.au/consumer/generalissues/Pages/Caffeine.aspx]
3. High caffeine energy drinks and other foods containing caffeine. [https://www.food.gov.uk/science/additives/energydrinks]
4. List of Permitted Food Additives with Other Generally Accepted Uses. [http://www.hc-sc.gc.ca/fn-an/secureit/addit/list/8-other-autre-eng.php]
5. Food Additive Status List. [http://www.fda.gov/food/ingredientspackaginglabeling/foodadditivesingredients/ucm091048.htm#ftnC]
6. Australia New Zealand Food Standards Code - Standard 1.3.1 - Food Additives. [http://www.comlaw.gov.au/Series/F2008B00614]
7. Australia New Zealand Food Standards Code - Standard 2.6.4 - Formulated Caffeinated Beverages. [http://www.comlaw.gov.au/Series/F2008B00793]
8. Food Regulation Standing Committee Caffeine Working Group. Food Regulation Policy Options Paper: The Regulation of Caffeine in Foods. Woden, ACT: Food Regulation Standing Committee Caffeine Working Group; 2013.
9. It's Your Health - Caffeine. [http://www.cg.cfpsa.ca/cg-pc/Comox/SiteCollectionDocuments/EN/Health%20Promotion/WW_Additional_Handouts/70%20-%20Caffeine_EN.pdf]
10. FDA to Investigate Caffeine. [http://www.fda.gov/ForConsumers/ConsumerUpdates/ucm350570.htm]
11. Heatherley SV, Hayward RC, Seers HE, Rogers PJ. Cognitive and psychomotor performance, mood, and pressor effects of caffeine after 4, 6 and 8 h caffeine abstinence. *Psychopharmacology (Berl).* 2005;178:461–70.
12. Griffiths RR, Woodson PP. Caffeine physical dependence: a review of human and laboratory animal studies. *Psychopharmacology (Berl).* 1988;94:437–51.
13. Department of Health and Ageing, National Health and Medical Research Council. Nutrient Reference values for Australia and New Zealand. Canberra, ACT: Commonwealth of Australia; 2006.
14. Fitt E, Pell D, Cole D. Assessing caffeine intake in the United Kingdom diet. *Food Chem.* 2013;140:421–6.
15. Frary CD, Johnson RK, Wang MQ. Food sources and intakes of caffeine in the diets of persons in the United States. *J Am Diet Assoc.* 2005;105:110–3.
16. Knight CA, Knight I, Mitchell DC. Beverage caffeine intakes in young children in Canada and the US. *Can J Diet Pract Res.* 2006;67:96–9.
17. Riddell LJ, Sayompark D, Oliver P, Keast RSJ. Caffeine as an Ingredient in Sugar Sweetened Beverages. In: Preedy VR, editor. *Caffeine: Chemistry, Analysis, Function and Effects.* Cambridge: Royal Society of Chemistry; 2012. p. 22–38.
18. Armfield JM, Spencer AJ, Roberts-Thomson KF, Plastow K. Water fluoridation and the association of sugar-sweetened beverage consumption and dental caries in Australian children. *Am J Public Health.* 2013;103:494–500.
19. Whiting SJ, Vatanparast H, Baxter-Jones A, Faulkner RA, Mirwald R, Bailey DA. Factors that affect bone mineral accrual in the adolescent growth spurt. *J Nutr.* 2004;134:696S–700.
20. de Ruyter JC, Olthof MR, Seidell JC, Katan MB. A trial of sugar-free or sugar-sweetened beverages and body weight in children. *N Engl J Med.* 2012;367:1397–406.

21. Ebbeling CB, Feldman HA, Chomitz VR, Antonelli TA, Gortmaker SL, Osganian SK, et al. A randomized trial of sugar-sweetened beverages and adolescent body weight. *N Engl J Med*. 2012;367:1407–16.
22. Ebbeling CB, Feldman HA, Osganian SK, Chomitz VR, Ellenbogen SJ, Ludwig DS. Effects of decreasing sugar-sweetened beverage consumption on body weight in adolescents: a randomized, controlled pilot study. *Pediatrics*. 2006;117:673–80.
23. James J, Thomas P, Cavan D, Kerr D. Preventing childhood obesity by reducing consumption of carbonated drinks: cluster randomised controlled trial. *BMJ*. 2004;328:1237.
24. PepsiCo International The physical or technical effect of caffeine in cola beverages. Vol III, Appendix XII of comments of the National Soft Drink Association submitted to the department of Health and Human Services Food and Drug Administration in response to the proposal to delete caffeine in cola-type beverages from the list of generally regarded as safe and to issue an interim food additive regulation governing its future use no. FDA Docket No. 80N-0418. 1981
25. Keast RSJ, Riddell LJ. Caffeine as a flavor additive in soft-drinks. *Appetite*. 2007;49:255–9.
26. Keast RSJ, Swinburn B, Sayonpark D, Whitlock S, Riddell LJ. Caffeine increases sugar sweetened beverage consumption in a free living population. A randomised control trial. *Br J Nutr*. 2015; doi:10.1017/S000711451400378X.
27. Keast RSJ, Sayonpark D, Sacks G, Swinburn BA, Riddell LJ. The influence of caffeine on energy content of sugar-sweetened beverages: 'the caffeine-calorie effect'. *Eur J Clin Nutr*. 2011;65:1338–44.
28. Department of Health and Ageing, Department of Agriculture Fisheries and Forestry, Australian Food and Grocery Council. 2007 Australian National Children's Nutrition and Physical Activity Survey User Guide. Canberra, Australia: Commonwealth Government; 2010.
29. Grimes CA, Campbell KJ, Riddell LJ, Nowson CA. Sources of sodium in Australian children's diets and the effect of the application of sodium targets to food products to reduce sodium intake. *Br J Nutr*. 2011;105:468–77.
30. Cole TJ, Bellizzi MC, Flegal KM, Dietz WH. Establishing a standard definition for child overweight and obesity worldwide: international survey. *BMJ*. 2000;320:1240–3.
31. Cole TJ, Flegal KM, Nicholls D, Jackson AA. Body mass index cut offs to define thinness in children and adolescents: international survey. *BMJ*. 2007;335:194.
32. NZ Food NZ Children: Key results of the 2002 National Children's Nutrition Survey. [<http://www.health.govt.nz/publication/nz-food-nz-children>]
33. Food Standards Australia New Zealand. Australian Food, Supplement & Nutrient Database 2007. Food Standards Australia and New Zealand Website. 2008. [<http://www.foodstandards.gov.au/science/monitoringnutrients/ausnut/Pages/ausnut2007.aspx>]
34. Food Standards Australia New Zealand. AUSNUT 2007—Australian Food, Supplement and Nutrient Database for Estimation of Population Nutrient Intakes: Explanatory Notes. Canberra: Food Standards Australia New Zealand; 2008. <http://www.foodstandards.gov.au/science/monitoringnutrients/ausnut/pages/ausnut2007supporting4063.aspx>.
35. Grimes CA, Riddell LJ, Campbell KJ, Nowson CA. Dietary salt intake, sugar-sweetened beverage consumption, and obesity risk. *Pediatrics*. 2013;131:14–21.
36. Hafekost K, Mitrou F, Lawrence D, Zubrick SR. Sugar sweetened beverage consumption by Australian children: implications for public health strategy. *BMC Public Health*. 2011;11:950.
37. Mitchell GL, Farrow C, Haycraft E, Meyer C. Parental influences on children's eating behaviour and characteristics of successful parent-focussed interventions. *Appetite*. 2013;60:85–94.
38. Spurrier N, Magarey A, Golley R, Curnow F, Sawyer M. Relationships between the home environment and physical activity and dietary patterns of preschool children: a cross-sectional study. *Int J Behav Nutr Phys Act*. 2008;5:31.
39. Gibson R. Principles of Nutritional Assessment. 2nd ed. New York: Oxford University Press; 2005.

Submit your next manuscript to BioMed Central and take full advantage of:

- Convenient online submission
- Thorough peer review
- No space constraints or color figure charges
- Immediate publication on acceptance
- Inclusion in PubMed, CAS, Scopus and Google Scholar
- Research which is freely available for redistribution

Submit your manuscript at
www.biomedcentral.com/submit

