



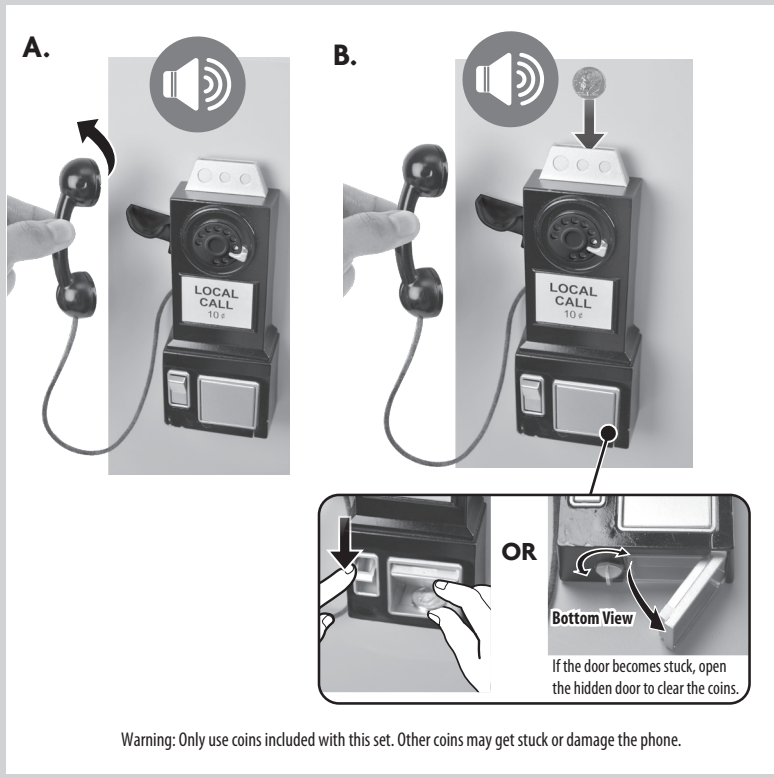
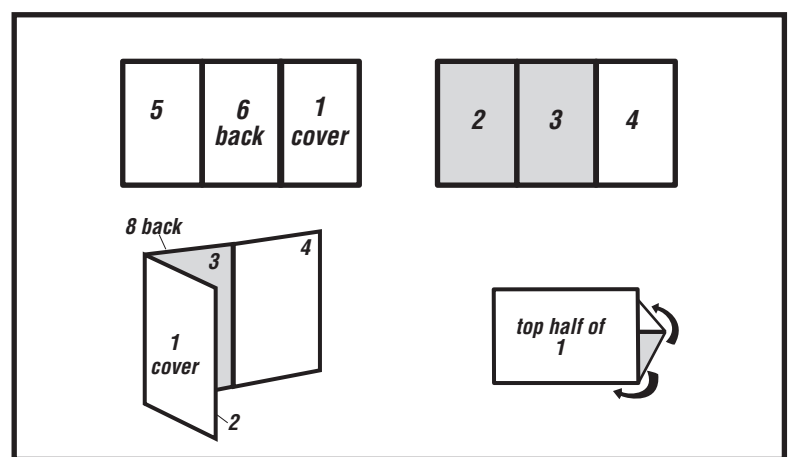
DATE: April 30, 2019
 SKU NUMBER: GLJ42-0970
 SKU NAME: Maryellen's Seaside Diner
 AGILE NUMBER: 1101575114_Instruction
 LANGUAGE CODE: DOM

TYPE OF APPLICATION: Printing

NOTES:
 SIZE: 13.5" X 4.5" folded to 4.5" X 4.5"
 TYPE OF FOLD: 3 panel
 MATERIAL: 128gsm BSC
 COLOR: 1C + 1C (Blk)
 COATING: 2/S Waterbase

This is a battery-operated product.
Battery Safety Information
WEEE Logo
 Flyer is required to be placed inside the packaging
32L 00001-2908-G1

The FCC Flyer is required to be placed inside the packaging.
00007-1849G8



5 Rear



6 Rear

American Girl® Maryellen's Seaside Diner

Components

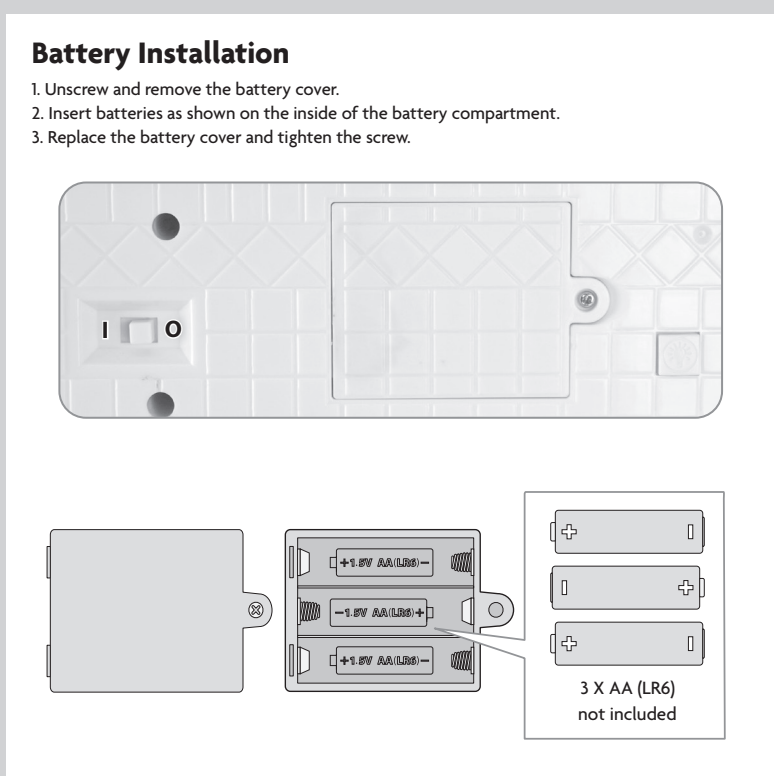
- | | | |
|----------------------------|---------------------|------------------------------|
| 1 diner counter | 1 pepper shaker | 2 hot dogs |
| 2 fried eggs | 1 serving tray | 1 strawberry malt |
| 1 set of breakfast patties | 8 paper trays | 1 chocolate malt |
| 1 stack of pancakes | 1 bell | 2 servings of fries |
| 4 metal forks | 4 order slips | 2 metal malt cups |
| 2 fruit cups | 2 menus | 2 servings of scrambled eggs |
| 2 sandwiches | 4 placemats | 1 condiment caddy |
| 1 set of bacon | 1 paper hat | 4 ceramic plates |
| 2 slices of toast | 1 apron | 1 sticker sheet |
| 1 container of syrup | 1 bottle of ketchup | 2 booth benches |
| 1 waffle | 1 bottle of mustard | 1 table |
| 1 salt shaker | 2 hamburgers | 15 bills |
| | | 5 coins |

WARNING:
 CHOKING HAZARD - Small parts.
 Not for children under 3 years.

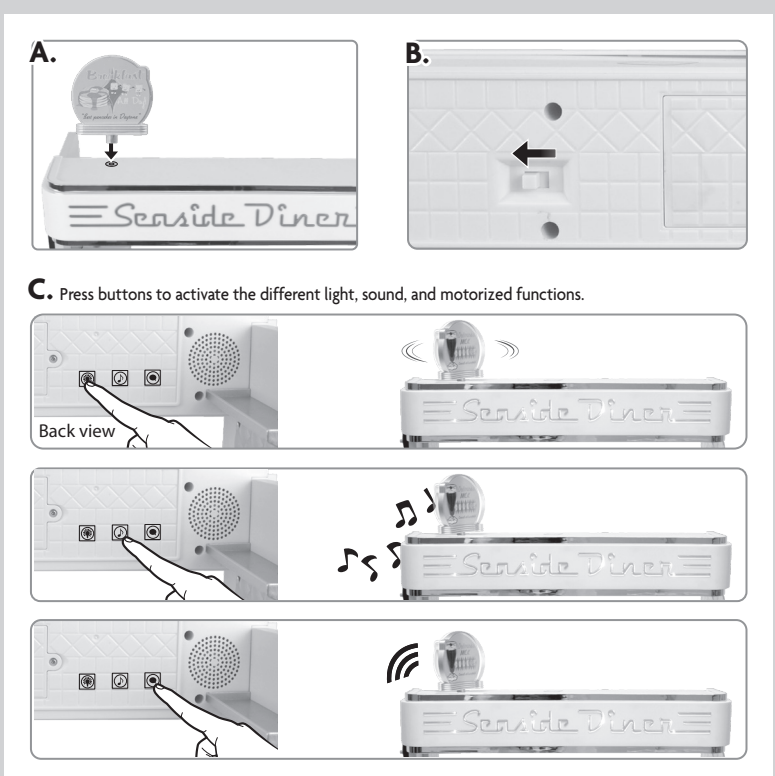
Tool required for battery installation: Phillips screwdriver (not included).
 Requires 3 AA (LR6) x 1.5V alkaline batteries (not included).
 Keep these instructions for future reference as they contain important information.



1 Cover



2 Rear



3 Rear



4 Rear