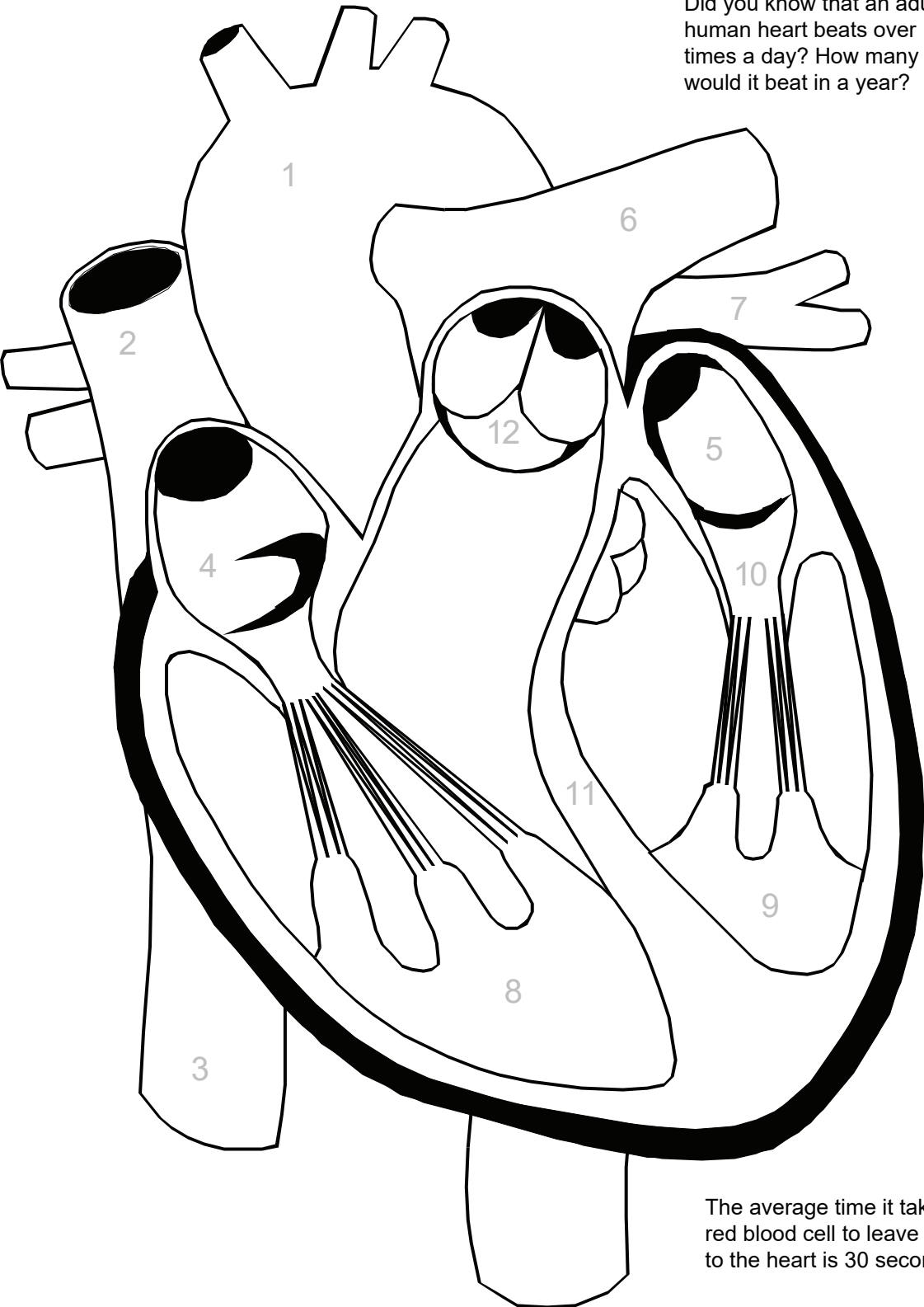


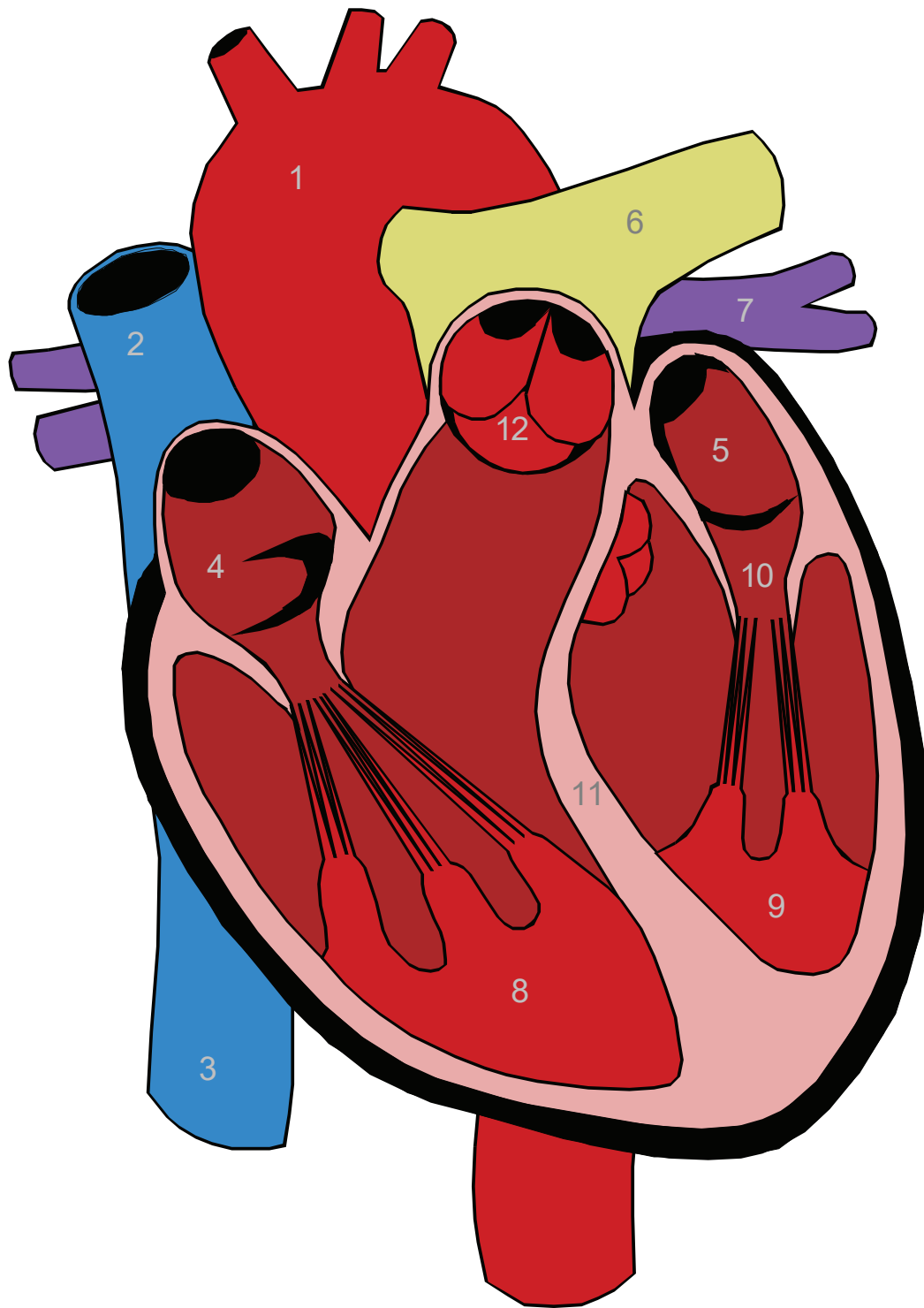
Did you know that an adult human heart beats over 100,000 times a day? How many times would it beat in a year?



The average time it takes a single red blood cell to leave and return to the heart is 30 seconds.

Color and label parts:

- | | | | |
|---------|---------|---------|----------|
| 1 _____ | 4 _____ | 7 _____ | 10 _____ |
| 2 _____ | 5 _____ | 8 _____ | 11 _____ |
| 3 _____ | 6 _____ | 9 _____ | 12 _____ |



Heart Anatomy Key:

- | | | | |
|-----------------------|--------------------|-------------------|---------------------------|
| 1 Aorta | 4 Right Atrium | 7 Pulmonary Vein | 10 Atrioventricular Valve |
| 2 Anterior Vena Cava | 5 Left Atrium | 8 Right Ventricle | 11 Septum |
| 3 Posterior Vena Cava | 6 Pulmonary Artery | 9 Left Ventricle | 12 Semilunar Valve |