



ARKANSAS

Gymnastics



MEET NOTES

MEET 10 **VS OKLAHOMA** MARCH 10, 2024

THE SCHEDULE

OVERALL: 7-5-1 | SEC: 4-2-1 | H: 3-0 | A: 2-2-1 | N: 2-3

| | | | |
|---------------------------|---------------------|------|--------------|
| JAN. 12 VS GEORGIA | BARNHILL ARENA | 6:45 | W, 197.150 |
| JAN. 19 AT ALABAMA | TUSCALOOSA, ALA. | 6:30 | T, 197.525 |
| JAN. 26 VS AUBURN | BARNHILL ARENA | 6:45 | W, 197.225 |
| FEB. 2 AT LSU | BATON ROUGE, LA. | 7:00 | L, 196.200 |
| FEB. 9 AT FLORIDA | GAINESVILLE, FLA. | 6:30 | L, 196.050 |
| FEB. 17 | METROPLEX CHALLENGE | | 3rd, 196.800 |
| FEB. 19 | TWU QUAD | | 2nd, 197.375 |
| FEB. 23 VS KENTUCKY | BARNHILL ARENA | 7:15 | W, 197.400 |
| MAR. 3 AT MISSOURI | COLUMBIA, MO. | 5:00 | W, 197.650 |
| MAR. 10 VS OKLAHOMA | BUD WALTON ARENA | 3:45 | SECN+ |
| MAR. 15 VS NEBRASKA | BUD WALTON ARENA | 6:45 | SECN+ |
| MAR. 18 SEC CHAMPIONSHIPS | | | |
| | NEW ORLEANS, LA. | TBA | SEC NETWORK |

APRIL 3-6: NCAA REGIONALS
APRIL 18-20: NCAA CHAMPIONSHIPS

MEET
10



VS OKLAHOMA IN FAYETTEVILLE

MARCH 10, 2024 AT 4:00 PM (CT)

BUD WALTON ARENA
LIVE SCORING: VIRTUUS
WATCH: SEC NETWORK+

GYMBACK NOTABLES

Arkansas Sets New Team, Beam Records In Victory Over Missouri

The No. 12 Gymbacks made their Sunday a fun one as they defeated the No. 13 Missouri Tigers in record-breaking fashion with a new program high score of 197.650 on March 3. It was the second time this season Arkansas has set a new team record score, and the second time it's happened on the road. Sunday's mark of 197.650 was over a tenth higher than the previous high set at Alabama in January and was the sixth 197+ score on the season for Arkansas, a new program record. The meet was the last regular season SEC contest for the Gymbacks, and they conclude their conference slate at 4-2-1, the most victories since 2016 and most under head coach Jordyn Wieber. In addition to the team total, Arkansas also set a new program high on beam of 49.575. The Hogs outscored the Tigers on vault and beam on the night and went 49.500+ on beam and floor (49.525). Frankie Price and Lauren Williams came in a four-way tie for first on vault with 9.875 scores, Maddie Jones claimed the bars crown with a season-high 9.925, and Williams also got a victory on floor with her 9.950.

Razorbacks Get Highest Ranked Win In Eight Years, Set New Floor Record Against Kentucky

The No. 16 Gymbacks were clearly happy to be home on Feb. 23 as they took down the No. 6 Kentucky Wildcats 197.400-197.150 at Barnhill Arena. The victory was Arkansas' highest-ranked and first in a regular season over Kentucky since 2016 and marked the fifth 197+ score so far for Razorbacks, which matches a single season record set in 2021. The final of 197.400 ties for the fourth-highest score ever. Arkansas outscored the Wildcats on every event but beam and set a new program record of 49.675 on floor, upending the previous high of 49.575 earned in 2015. Four Gymbacks got at least a share of an event title: Cami Weaver and Lauren Williams on vault (9.925), Maddie Jones on bars (9.950) and Frankie Price on floor (9.975). Price's mark of 9.975 on floor matches her career high and the program record. Two other gymnasts have scored 9.975 on floor in Katherine Grable and Jaime Pisani, but Price is the first to do so twice.

Arkansas Places Second at TWU Quad with Second-Best Score of 2024

In the second of two meets in three days, the No. 16 Gymbacks had a great showing as they posted their second-best score of the season, 197.375, and finished second among No. 10 Alabama (197.625), No. 19 Arizona (196.950) and host TWU (195.725). Arkansas did not score lower than 49.200 in any of its rotations on the day and had a monster outing on floor with a 49.575, which matches the Hogs' season best and the second-best score in program history. Freshman Hailey Klein claimed her first-ever event title with a 9.925 score on beam, a new career high. The dynamic duo of Lauren Williams and Frankie Price delivered another two stellar floor routines that scored a matching 9.950 each in a three-way tie for first on the event. It was the second title of the weekend for both, as Price also won floor at Saturday's Metroplex Challenge and Williams took home the vault gold. The team score of 197.375 is also the fifth-best ever, and the program's top five scores have now come in the last four seasons under head coach Jordyn Wieber.

Gymbacks Place Third at Metroplex Challenge

In the team's first of two meets on the weekend, No. 16 Arkansas faced a stack field and bounced back after a tough second rotation to come in third of four teams at the Metroplex Challenge with a score of 196.800. Lauren Williams scored a 9.925 on vault to earn a share of the event title, and Frankie Price scored 9.950 on floor to come in a five-way tie for first. It was the third title on the season for each on their respective events. The Gymbacks started the night on bars and scored 49.400, which matches their season high. They then hit a setback with a 48.650 on beam, but bounced back well and didn't score lower than 49.300 on either of the remaining two events with a 49.450 on floor and 49.300 on vault.

NUMBERS TO KNOW

6

Scores over 197 for the Gymbacks so far, a new program record. The program has scored 197+ 23 times ever, 26 percent in 2024

197.335

Arkansas' current overall NQS, the highest in program history

49.575

The Gymbacks' new program beam record set on March 3 at Missouri. Arkansas has now bested its previous beam high in three straight seasons

7

Regular season victories for Arkansas in 2024 with two meets remaining, the most since 2016 and most under head coach Jordyn Wieber

FOLLOW THE SHOW

TWITTER @RAZORBACKGYM
INSTAGRAM @RAZORBACKGYM
FACEBOOK ARKANSAS RAZORBACK GYMNASTICS

BY THE NUMBERS

| | | | | | |
|----------|--------|--------|--------|--------|---------|
| ARKANSAS | 49.295 | 49.340 | 49.240 | 49.520 | 197.335 |
| | VAULT | BARS | BEAM | FLOOR | NQS |
| OKLAHOMA | 49.505 | 49.660 | 49.700 | 49.630 | 198.420 |

MEET 10 VS OKLAHOMA MARCH 10, 2024

ALPHABETICAL ROSTER

| NAME | EVENTS | CLASS | Ht. | HOMETOWN | CLUB GYM/PREV. SCHOOL |
|--------------------|--------|-------------|------|-----------------------|----------------------------------|
| Chandler Buntin | AA | Freshman | 5-5 | Collierville, Tenn. | ConXion Gymnastics |
| Reese Drotar | AA | Sophomore | 5-8 | Los Gatos, Calif. | Airbone Gymnastics |
| Dakota Essenspries | AA | Freshman | 5-2 | Adrian, Mo. | Missouri Elite Gymnastics |
| Kalyxta Gamiao | AA | Junior | 4-10 | Honolulu, Hawaii | Hawaiian Island Twisters |
| Maddie Jones | AA | Junior | 5-2 | Charlotte, N.C. | Southeastern Gymnastics |
| Emma Kelley | AA | Senior | 5-2 | Houston, Texas | Fun & Fitness Gymnastics |
| Hailey Klein | AA | Freshman | 5-2 | Lake Forest, Ill. | Legacy Elite Gymnastics |
| Sirena Linton | AA | Graduate | 5-3 | South Phoenix, Ariz. | Desert Lights Gymnastics/Arizona |
| Priscilla Park | AA | Freshman | 5-3 | Atlanta, Ga. | Georgia Elite Gymnastics |
| Jaime Pratt | AA | Sophomore | 5-2 | Hanover, Pa. | Hanover Gymnastics |
| Frankie Price | AA | R-Sophomore | 5-0 | Dallas, Texas | Texas Dreams Gymnastics |
| Jensen Scalzo | AA | Senior | 5-4 | Fort Lauderdale, Fla. | American Twisters Gymnastics |
| Makenzie Sedlacek | AA | Junior | 5-4 | West Chicago, Ill. | Midwest Elite Gymnastics Academy |
| Leah Smith | AA | Junior | 5-1 | Houston, Texas | World Champions Centre |
| Cally Swaney | AA | Sophomore | 5-2 | Belmont, N.C. | First in Flight |
| Cami Weaver | AA | R-Sophomore | 5-1 | Pelham, Ala. | Legacy Gymnastics |
| Lauren Williams | AA | Sophomore | 5-3 | Rogers, Ark. | Aspire Gymnastics |

BY STATE

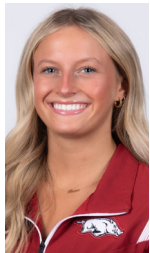
| | |
|-------------------|-----------------|
| ALABAMA | |
| Cami Weaver | Pelham |
| ARIZONA | |
| Sirena Linton | South Phoenix |
| ARKANSAS | |
| Lauren Williams | Rogers |
| CALIFORNIA | |
| Reese Drotar | Los Gatos |
| FLORIDA | |
| Jensen Scalzo | Fort Lauderdale |
| GEORGIA | |
| Priscilla Park | Atlanta |
| HAWAII | |
| Kalyxta Gamiao | Honolulu |

COACHING STAFF

| TITLE | NAME | EXPERIENCE | ALMA MATER |
|-------------------------|----------------|---------------|-----------------|
| Head Coach | Jordyn Wieber | Fifth Season | UCLA, '17 |
| Assistant Coach | Chris Brooks | Fifth Season | Oklahoma, '09 |
| Assistant Coach | Kyla Ross | Third Season | UCLA, '20 |
| Assistant Coach | Kyla Bryant | First Season | Stanford, '22 |
| Trainer | Kaitlyn Hocutt | Second Season | Ohio State, '19 |
| Strength & Conditioning | Whitney Smith | 10th Season | Arkansas, '10 |
| Director of Operations | Taylor Marten | First Season | Nebraska, '16 |



CHANDLER
BUNTIN
AA | FR | 5-5



REESE
DROTAR
AA | SO | 5-8



DAKOTA
ESSENPRIES
AA | FR | 5-2



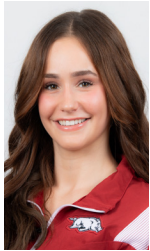
KALYXTA
GAMIAO
AA | JR | 4-10



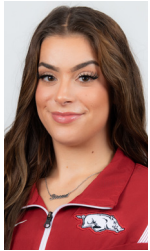
MADDIE
JONES
AA | JR | 5-2



EMMA
KELLEY
AA | SR | 5-2



HAILEY
KLEIN
AA | FR | 5-2



SIRENA
LINTON
AA | GR | 5-3



PRISCILLA
PARK
AA | FR | 5-3



JAIME
PRATT
AA | SO | 5-2



FRANKIE
PRICE
AA | R-SO | 5-0



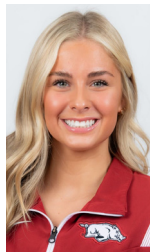
JENSEN
SCALZO
AA | SR | 5-4



MAKENZIE
SEDLACEK
AA | JR | 5-4



LEAH
SMITH
AA | JR | 5-1



CALLY
SWANEY
AA | SO | 5-2



CAMI
WEAVER
AA | R-SO | 5-1



LAUREN
WILLIAMS
AA | SO | 5-3

| | |
|-------------------|--------------|
| ILLINOIS | |
| Hailey Klein | Lake Forest |
| Makenzie Sedlacek | West Chicago |

| | |
|--------------------|--------|
| MISSOURI | |
| Dakota Essenspries | Adrian |

| | |
|-----------------------|-----------|
| NORTH CAROLINA | |
| Maddie Jones | Charlotte |
| Cally Swaney | Belmont |

| | |
|---------------------|---------|
| PENNSYLVANIA | |
| Jaime Pratt | Hanover |

| | |
|------------------|--------------|
| TENNESSEE | |
| Chandler Buntin | Collierville |

| | |
|---------------|---------|
| TEXAS | |
| Emma Kelley | Houston |
| Frankie Price | Dallas |
| Leah Smith | Houston |

BY CLASS

| | |
|---------------------|----------|
| FRESHMEN (4) | |
| Chandler Buntin | Freshman |
| Dakota Essenspries | Freshman |
| Hailey Klein | Freshman |
| Priscilla Park | Freshman |

| | |
|-----------------------|-------------|
| SOPHOMORES (6) | |
| Reese Drotar | Sophomore |
| Jaime Pratt | Sophomore |
| Cally Swaney | Sophomore |
| Lauren Williams | Sophomore |
| Frankie Price | R-Sophomore |
| Cami Weaver | R-Sophomore |

| | |
|--------------------|--------|
| JUNIORS (4) | |
| Kalyxta Gamiao | Junior |
| Maddie Jones | Junior |
| Makenzie Sedlacek | Junior |
| Leah Smith | Junior |

| | |
|------------------------------|----------|
| SENIORS/GRADUATES (3) | |
| Emma Kelley | Senior |
| Jensen Scalzo | Senior |
| Sirena Linton | Graduate |

PRONUNCIATIONS

| | |
|--------------------|-------------------|
| Reese Drotar | DRO-tar |
| Dakota Essenspries | Essen-PRICE |
| Kalyxta Gamiao | Callista GAH-meow |
| Makenzie Sedlacek | said-LA-check |
| Cally Swaney | SWAY-knee |
| Jordyn Wieber | WEE-bur |

RTN TOP 25

| NO. | TEAM | NQS | AVG. | HIGH |
|-----------|-----------------|----------------|----------------|----------------|
| 1 | Oklahoma | 198.420 | 198.260 | 198.675 |
| 2 | California | 197.950 | 197.725 | 198.400 |
| 3 | LSU | 197.885 | 197.794 | 198.475 |
| 4 | Florida | 197.765 | 197.684 | 198.225 |
| 5 | Utah | 197.725 | 197.586 | 198.075 |
| 6 | Kentucky | 197.680 | 197.531 | 198.100 |
| 7 | Michigan | 197.510 | 197.264 | 197.725 |
| 8 | Michigan State | 197.500 | 197.331 | 198.050 |
| 9 | Alabama | 197.465 | 197.394 | 198.075 |
| 10 | UCLA | 197.460 | 197.272 | 198.075 |
| 11 | Denver | 197.435 | 197.347 | 198.025 |
| 12 | Arkansas | 197.335 | 197.042 | 197.650 |
| 13 | Missouri | 197.275 | 197.108 | 197.525 |
| 14 | Auburn | 197.105 | 197.100 | 197.725 |
| 15 | Ohio State | 197.030 | 196.997 | 197.350 |
| 16 | Oregon State | 196.975 | 196.789 | 197.575 |
| 17 | Minnesota | 196.945 | 196.856 | 197.525 |
| 18 | Arizona State | 196.795 | 196.614 | 197.250 |
| 19 | Arizona | 196.770 | 196.675 | 197.000 |
| 20 | Georgia | 196.670 | 196.769 | 197.550 |
| 21 | NC State | 196.620 | 196.342 | 197.575 |
| 22 | Stanford | 196.585 | 196.178 | 196.875 |
| 23 | Penn State | 196.545 | 196.339 | 197.025 |
| 24 | Illinois | 196.525 | 196.314 | 196.850 |
| 25 | Washington | 196.485 | 196.323 | 197.200 |

SEC teams in bold

WXW EVENT RANKINGS

| WEEK | TEAM | VT | UB | BB | FX |
|-----------|------|-----|-----|-----|----|
| Preseason | 15 | -- | -- | -- | -- |
| 1/8 | -- | -- | -- | -- | -- |
| 1/15 | 4 | T10 | 8 | T21 | 1 |
| 1/22 | 4 | 5 | 9 | 6 | 3 |
| 1/29 | 7 | 7 | 8 | 7 | 2 |
| 2/5 | 13 | 12 | T26 | 6 | 7 |
| 2/12 | 16 | 14 | T24 | 20 | 9 |
| 2/19 | 16 | 14 | 22 | 23 | 9 |
| 2/26 | 12 | 12 | T10 | 22 | 8 |
| 3/4 | 12 | 12 | T14 | T14 | T9 |
| 3/11 | -- | -- | -- | -- | -- |
| 3/18 | -- | -- | -- | -- | -- |
| 4/22 | -- | -- | -- | -- | -- |

IND. EVENT RANKINGS (TOP 50)

| Gymback | AA | VT | UB | BB | FX |
|--------------------|----|-----|-----|-----|-----|
| Chandler Buntin | -- | -- | -- | -- | -- |
| Reese Drotar | -- | -- | -- | -- | -- |
| Dakota Essenspries | -- | -- | -- | -- | -- |
| Kalyxta Gamiao | -- | -- | -- | T28 | -- |
| Maddie Jones | -- | -- | T39 | -- | T29 |
| Emma Kelley | -- | -- | -- | -- | -- |
| Hailey Klein | -- | -- | -- | -- | -- |
| Sirena Linton | -- | -- | -- | -- | -- |
| Priscilla Park | -- | -- | -- | -- | -- |
| Jaime Pratt | -- | -- | -- | -- | -- |
| Frankie Price | -- | -- | -- | -- | T9 |
| Jensen Scalzo | -- | -- | -- | -- | -- |
| Makenzie Sedlacek | -- | -- | -- | -- | -- |
| Leah Smith | -- | T46 | -- | -- | -- |
| Cally Swaney | -- | -- | -- | -- | -- |
| Cami Weaver | -- | -- | -- | -- | -- |
| Lauren Williams | -- | T15 | -- | -- | T9 |

NOTEBOOK CONTINUED

Arkansas Downed By Florida In SEC Road Dual

While the No. 13 Gymbacks trailed the No. 6 Florida Gators all night heading into Feb. 9's fourth rotation, a shaky last event put any sort of comeback out of reach as Arkansas was defeated by Florida, 197.850-196.050. The Gators outscored the Razorbacks on every event, and despite not earning a 9.900 score until midway through the meet, Arkansas did come away with at least a share of two titles: Frankie Price with a 9.950 for a solo floor victory and Kalyxta Gamiao with a 9.925 on beam, which came in a three-way tie for first. The meet had 8,823 fans in attendance and was the first regular season gymnastics contest aired on ESPN so far in 2024.

Gymbacks Fall To LSU In Top 10 Road Showdown

Despite getting better with every event as the night went on, the Tigers proved to be too much for the Gymbacks on Feb. 2 as No. 7 Arkansas fell to No. 5 LSU 198.475-196.200 in Baton Rouge. The Tigers' score was the highest by any team in the country this season and a new program high. Arkansas did score above 49 in three of four events and earned a season-high 49.450 on beam. Freshman Priscilla Park was a highlight for the Hogs on the night as she made her second-ever all-around appearance for Arkansas and scored 39.425, good for third place. She capped the outing off with a stellar 9.975 on beam, good for a share of the event title and the best score on beam by an Arkansas freshman since 2018.

Arkansas Defeats Auburn in Front of Sellout Crowd

The No. 4 Gymbacks kept their hot start to the season going on Jan. 26 as they took down the Auburn Tigers 197.225-196.675 at Barnhill Arena. The win was Arkansas' first home victory over the Tigers since 2018. With their third score over 197 for the third consecutive week, it's just the second time in history Arkansas has recorded back-to-back-to-back 197+ scores, the last in 2021, also under head coach Jordyn Wieber. The Hogs outscored the Tigers on bars and floor, and eight Gymbacks posted top three finishes, including a three-way tie for the bars title for Reese Drotar, Maddie Jones and Cally Swaney. Lauren Williams also earned her second floor title of the year with a score of 9.950. The meet was a capacity crowd of 7,147, which matches the Barnhill Arena program record attendance set last season against LSU.

Gymbacks Set New Program Score Record, Tie Crimson Tide

Jan. 19's top five match-up between the No. 3 Alabama Crimson Tide and No. 4 Arkansas Razorbacks had no shortage of excitement as the two teams went toe-to-toe in Tuscaloosa and while the final scores ended in a tie, Arkansas set a new program high of 197.525. The Hogs did not score lower than 49.300 in any of the four events and registered seven scores of 9.900 or higher on the night. Alabama bested Arkansas in just one area on the night: bars, also the event that the Tide are currently ranked No. 1 in the country on. Leah Smith and Lauren Williams came in a three-way tie for first on vault with 9.925 marks, and five other Gymbacks posted top three finishes: Priscilla Park on bars (9.925), Kalyxta Gamiao (9.925) and Sirena Linton (9.900) on beam and Leah Smith (9.925) and Maddie Jones (9.900) on floor. Park made her Arkansas all-around debut on Friday and finished the night with a 38.525, posing 9.800+ scores on three events.

Arkansas Earns Best-Ever Season-Opening Score, Takes Down Georgia

The Razorback gymnastics team opened its season on Jan. 12 and made history as the team defeated the Georgia Bulldogs at Barnhill Arena 197.150-196.350. The score is the best week one score by the Gymbacks ever, and the first time the team has ever scored over 197 in a season opener. The Razorbacks hadn't defeated the Bulldogs at home since the 2020 season and have now won their last five meets over Georgia. The Gymbacks one at least a share on each event title but bars. Cami Weaver and Lauren Williams grabbed shares of the vault crown with 9.900 scores, which matched a personal best for Weaver. In her balance beam debut, junior Maddie Jones earned a 9.900, which tied her for first. Williams and Frankie Price delivered strong tumbling and stellar choreography for scores of 9.950 on floor, which gave them the tie for the title. A total of 4,552 fans came to Friday's season opener, setting the tone for another big crowd contingent in Barnhill for 2024.

TEAM SCORES

| DATE | VAULT | BARS | BEAM | FLOOR | TOTAL | 2-ROT. SCORE | 3-ROT. SCORE |
|-------|--------|--------|--------|--------|---------|--------------|--------------|
| 01.12 | 49.225 | 49.325 | 49.025 | 49.575 | 197.150 | 98.550 | 147.575 |
| 01.19 | 49.425 | 49.300 | 49.400 | 49.400 | 197.525 | 98.725 | 148.125 |
| 01.26 | 49.225 | 49.400 | 49.125 | 49.475 | 197.225 | 98.625 | 147.750 |
| 02.02 | 49.200 | 48.175 | 49.450 | 49.375 | 196.200 | 97.375 | 146.750 |
| 02.09 | 49.025 | 49.175 | 48.425 | 49.425 | 196.050 | 98.200 | 147.625 |
| 02.17 | 49.300 | 49.400 | 48.650 | 49.450 | 196.800 | 98.050 | 147.500 |
| 02.19 | 49.300 | 49.300 | 49.200 | 49.575 | 197.375 | 98.500 | 148.075 |
| 02.23 | 49.400 | 49.375 | 48.950 | 49.675 | 197.400 | 98.775 | 147.725 |
| 03.03 | 49.250 | 49.300 | 49.575 | 49.525 | 197.650 | 98.550 | 148.125 |
| 03.10 | | | | | | | |
| 03.15 | | | | | | | |
| 03.23 | | | | | | | |

IND. EVENT TITLES

| NAME | VT | UB | BB | FX | AA |
|-------------------|----|----|----|----|----|
| Chandler Buntin | -- | -- | -- | -- | -- |
| Reese Drotar | -- | 1 | -- | -- | -- |
| Dakota Essenpries | -- | -- | -- | -- | -- |
| Kalyxta Gamiao | -- | -- | 1 | -- | -- |
| Maddie Jones | -- | 3 | 1 | -- | -- |
| Emma Kelley | -- | -- | -- | -- | -- |
| Hailey Klein | -- | -- | 1 | -- | -- |
| Sirena Linton | -- | -- | -- | -- | -- |
| Priscilla Park | -- | -- | 1 | -- | 1 |
| Jaime Pratt | -- | -- | -- | -- | -- |
| Frankie Price | 1 | -- | -- | 5 | -- |
| Jensen Scalzo | -- | -- | -- | -- | -- |
| Makenzie Sedlacek | -- | -- | -- | -- | -- |
| Leah Smith | 1 | -- | -- | -- | -- |
| Cally Swaney | -- | 1 | -- | -- | -- |
| Cami Weaver | 2 | -- | -- | -- | -- |
| Lauren Williams | 5 | -- | -- | 4 | -- |

INDIVIDUAL LEADERS

| DATE | VAULT | BARS | BEAM | FLOOR | AA |
|-------|------------------------|---------------------|---------------------|-----------------------|--------------|
| 01.12 | Weaver/Williams, 9.900 | Pratt/Scalzo, 9.900 | Jones, 9.900 | Price/Williams, 9.950 | -- |
| 01.19 | Smith/Williams, 9.900 | Park, 9.925 | Gamiao, 9.925 | Smith, 9.925 | Park, 38.525 |
| 01.26 | Price/Smith, 9.875 | RD/MJ/CS, 9.900 | Gamiao/Jones, 9.875 | Williams, 9.950 | -- |
| 02.02 | Price/Williams, 9.875 | Pratt, 9.850 | Park, 9.975 | Williams, 9.925 | Park, 39.425 |
| 02.09 | Williams, 9.850 | Scalzo, 9.875 | Gamiao, 9.925 | Price, 9.950 | Park, 38.550 |
| 02.17 | Williams, 9.925 | Drotar/Jones, 9.900 | Gamiao, 9.875 | Price, 9.950 | -- |
| 02.19 | HK/LS/LW, 9.875 | Drotar, 9.900 | Klein, 9.925 | Price/Williams, 9.950 | -- |
| 02.23 | Weaver/Williams, 9.925 | Jones, 9.950 | Swaney, 9.850 | Price, 9.975 | -- |
| 03.03 | Price/Williams, 9.875 | Jones, 9.925 | MJ/HK/CW, 9.925 | Williams, 9.950 | -- |
| 03.10 | | | | | |
| 03.15 | | | | | |
| 03.23 | | | | | |

2024 AWARDS

| NAME | AWARD |
|------|-------|
|------|-------|

GYMBACK MAJORS

| NAME | MAJOR |
|-------------------|---------------------------------------|
| Chandler Buntin | Exercise Science |
| Reese Drotar | Communications |
| Dakota Essenpries | Business |
| Kalyxta Gamiao | Multimedia Storytelling & Production |
| Maddie Jones | Organizational Leadership Marketing |
| Emma Kelley | Hospitality Management |
| Hailey Klein | Business |
| Sirena Linton | Operations Management (Masters) |
| Priscilla Park | Communications |
| Jaime Pratt | Public Health |
| Frankie Price | Communications |
| Jensen Scalzo | Communications |
| Makenzie Sedlacek | Advertising & Public Relations |
| Leah Smith | Public Health |
| Cally Swaney | Public Health |
| Cami Weaver | Public Health |
| Lauren Williams | Communications |

THE LAST TIME ARKANSAS

| | |
|--------------------------------------|--|
| Scored a 196 or higher at home | 196.900 vs. No. 19 Minnesota (3/10/23) |
| Scored a 196 or higher on the road | 196.800 at Metroplex Challenge (2/17/24) |
| Scored a 197 or higher at home | 197.400 vs. No. 6 Kentucky (2/23/24) |
| Scored a 197 or higher on the road | 197.650 at No. 13 Missouri (3/3/24) |
| Scored a 198 or higher | Never |
| Won a home meet | vs. No. 6 Kentucky (2/23/24) |
| Won a road meet | at No. 13 Missouri (3/3/24) |
| Won a neutral site meet | NCAA Fayetteville Regional (4/10/09) |
| Lost a home meet | vs. No. 19 Minnesota (3/10/23) |
| Lost a road meet | at No. 6 Florida (2/9/24) |
| Lost a neutral site meet | 4th of 4, Norman Regional Final (4/2/22) |
| Won a conference meet | vs. No. 6 Kentucky (2/23/24) |
| Won a home conference meet | vs. No. 6 Kentucky (2/23/24) |
| Won a road conference meet | at No. 13 Missouri (3/3/24) |
| Lost a home conference meet | vs. No. 14 Missouri (2/24/23) |
| Lost a road conference meet | at No. 6 Florida (2/9/24) |
| Won the All-Around title at home | Norah Flatley, 39.575 vs. No. 19 Minnesota (3/10/23) |
| Won the All-Around title on the road | Priscilla Park, 38.525 at No. 3 Alabama (1/19/24) |
| Won the Vault title at home | Cami Weaver & Lauren Williams, 9.925 vs. No. 6 Kentucky (2/23/24) |
| Won the Vault title on the road | Frankie Price & Lauren Williams, 9.875 at No. 13 Missouri (3/3/24) |
| Won the Bars title at home | Maddie Jones, 9.950 vs. No. 6 Kentucky (2/23/24) |
| Won the Bars title on the road | Maddie Jones, 9.925 at No. 13 Missouri (3/3/24) |
| Won the Beam title at home | Maddie Jones, 9.900 vs. No. 15 Georgia (1/12/24) |
| Won the Beam title on the road | Hailey Klein, 9.925 at TWU Quad (2/19/24) |
| Won the Floor title at home | Frankie Price, 9.975 vs. No. 6 Kentucky (2/23/24) |
| Won the Floor title on the road | Lauren Williams, 9.950 at No. 13 Missouri (3/3/24) |
| Had an All-American | Norah Flatley, 2023 (8th, BB) |
| Had an NCAA Individual appearance | Norah Flatley & Lauren Williams, 2023 |

THE SERIES

>> In the 24 meetings between Arkansas and OU, the Gymbacks have been victorious over the Sooners just once, in 2009. OU last visited Fayetteville in 2019

>> Sunday is the second time this season that the two teams will square off, as both competed in February's Metroplex Challenge, in which Oklahoma came in first with a score of 198.300 and Arkansas came in third with a mark of 196.800

>> This will be the last regular season contest between the Sooners and Razorbacks without conference implications as Oklahoma is set to join the league in 2025

| OKLAHOMA (1-22) | | | |
|-----------------|-----|-----------------|------------------------------|
| DATE | W/L | SCORE | LOCATION |
| 4/9/05 | L | 193.950-195.550 | Durham Regional |
| 3/15/08 | L | 196.625-196.750 | Fayetteville, Ark. |
| 4/24/08 | L | 195.825-196.075 | Athens, Ga. (NCAA S. II) |
| 1/26/09 | W | 196.900-195.625 | Norman, Okla. |
| 3/19/10 | L | 196.100-197.475 | Fayetteville, Ark. |
| 1/7/11 | L | 195.075-195.475 | Norman, Okla. |
| 4/15/11 | L | 195.450-196.775 | Cleveland, Ohio (NCAA S. II) |
| 2/5/12 | L | 196.175-197.425 | Fayetteville, Ark. |
| 4/19/13 | L | 196.150-197.200 | Los Angeles (NCAA S. II) |
| 3/14/14 | L | 196.650-197.425 | Fayetteville, Ark. |
| 1/9/15 | L | 194.900-197.625 | Norman, Okla. |
| 1/31/15 | L | 196.250-197.700 | Fort Worth, Texas |
| 1/17/16 | L | 195.900-197.050 | Fayetteville, Ark. |
| 4/2/16 | L | 195.500-197.575 | Iowa City Regional |
| 3/9/18 | L | 195.575-198.100 | Norman, Okla. |
| 1/5/19 | L | 198.050-195.575 | Fayetteville, Ark. |
| 1/26/19 | L | 197.975-195.825 | Fort Worth, Texas |
| 1/20/20 | L | 198.175-196.550 | Norman, Okla. |
| 4/3/21 | L | 198.175-196.700 | Tuscaloosa Regional Final |
| 3/31/22 | L | 198.175-196.975 | Norman Regional |
| 4/2/22 | L | 198.250-196.675 | Norman Regional Final |
| 2/11/23 | L | 197.125-198.125 | Metroplex Challenge |
| 3/30/23 | L | 197.275-197.925 | Norman Regional |
| 2/17/24 | L | 198.300-196.800 | Metroplex Challenge |

SEC STANDINGS

| TEAM | SEC | PCT | HOME | AWAY | OVERALL | PCT | HOME | AWAY | NEUTRAL | NQS | HIGH |
|----------------------|-------|------|-------|-------|---------|------|-------|-------|---------|---------|---------|
| Florida [^] | 6-1 | .857 | 2-1 | 3-0 | 11-1 | .917 | 5-1 | 3-0 | 3-0 | 197.765 | 198.225 |
| LSU | 5-2 | .714 | 4-0 | 1-2 | 8-3 | .727 | 5-0 | 1-2 | 2-1 | 197.885 | 198.475 |
| Kentucky | 4-3 | .571 | 2-1 | 2-2 | 7-4 | .636 | 3-1 | 2-2 | 2-1 | 197.680 | 198.100 |
| Arkansas | 4-2-1 | .643 | 3-0 | 1-2-1 | 7-5-1 | .577 | 3-0 | 2-2-1 | 2-3 | 197.335 | 197.650 |
| Alabama | 3-3-1 | .500 | 2-1-1 | 1-2 | 9-3-1 | .731 | 2-1-1 | 2-2 | 5-0 | 197.465 | 198.075 |
| Missouri | 2-5 | .286 | 1-1 | 1-3 | 8-5 | .615 | 4-1 | 2-3 | 2-1 | 197.275 | 197.525 |
| Auburn | 2-5 | .286 | 2-2 | 0-3 | 6-7 | .462 | 5-2 | 0-3 | 1-2 | 197.105 | 197.725 |
| Georgia | 1-6 | .143 | 1-3 | 0-3 | 2-6 | .250 | 2-3 | 0-3 | 0-0 | 196.670 | 197.550 |

[^] - SEC Champion

MEET 10 **VS OKLAHOMA** MARCH 10, 2024

LINEUPS AND SCORES BY MEET

VAULT

| DATE | 1 | 2 | 3 | 4 | 5 | 6 | TEAM |
|------|---------------|--------------|-----------------|-------------------|-------------------|-----------------|--------|
| 1/12 | Weaver, 9.900 | Park, 9.825 | Sedlacek, 9.825 | Smith, 9.775 | Williams, 9.900 | Price, 9.700 | 49.225 |
| 1/19 | Weaver, 9.875 | Park, 9.800 | Smith, 9.925 | Sedlacek, 9.850 | Price, 9.850 | Williams, 9.925 | 49.425 |
| 1/26 | Weaver, 9.850 | Park, 9.750 | Smith, 9.875 | Sedlacek, 9.850 | Price, 9.875 | Williams, 9.775 | 49.225 |
| 2/2 | Weaver, 9.800 | Park, 9.825 | Smith, 9.775 | Price, 9.875 | Essenpries, 9.825 | Williams, 9.875 | 49.200 |
| 2/9 | Weaver, 9.750 | Park, 9.775 | Smith, 9.800 | Price, 9.800 | Klein, 9.800 | Williams, 9.850 | 49.025 |
| 2/17 | Weaver, 9.875 | Park, 9.850 | Smith, 9.850 | Price, 9.800 | Klein, 9.800 | Williams, 9.925 | 49.300 |
| 2/19 | Weaver, 9.825 | Park, 9.850 | Smith, 9.875 | Essenpries, 9.825 | Klein, 9.875 | Williams, 9.875 | 49.300 |
| 2/23 | Weaver, 9.925 | Smith, 9.900 | Price, 9.825 | Essenpries, 9.775 | Klein, 9.825 | Williams, 9.925 | 49.400 |
| 3/3 | Weaver, 9.800 | Smith, 9.850 | Price, 9.875 | Essenpries, 9.800 | Klein, 9.850 | Williams, 9.875 | 49.250 |
| 3/10 | | | | | | | |
| 3/15 | | | | | | | |
| 3/23 | | | | | | | |

BARS

| DATE | 1 | 2 | 3 | 4 | 5 | 6 | TEAM |
|-------|---------------|---------------|---------------|---------------|---------------|--------------|--------|
| 01.12 | Swaney, 9.800 | Linton, 9.825 | Pratt, 9.900 | Scalzo, 9.900 | Park, 9.825 | Jones, 9.875 | 49.325 |
| 01.19 | Swaney, 9.850 | Drotar, 9.875 | Pratt, 9.825 | Scalzo, 9.825 | Park, 9.925 | Jones, 9.825 | 49.300 |
| 01.26 | Swaney, 9.900 | Pratt, 9.875 | Drotar, 9.900 | Scalzo, 9.825 | Park, 9.675 | Jones, 9.900 | 49.400 |
| 02.02 | Swaney, 9.725 | Pratt, 9.850 | Drotar, 9.775 | Scalzo, 9.000 | Park, 9.775 | Jones, 9.050 | 48.175 |
| 02.09 | Swaney, 9.825 | Pratt, 9.825 | Drotar, 9.850 | Scalzo, 9.875 | Park, 9.800 | Jones, 9.300 | 49.175 |
| 02.17 | Swaney, 9.800 | Pratt, 9.850 | Drotar, 9.900 | Scalzo, 9.875 | Park, 9.875 | Jones, 9.900 | 49.400 |
| 02.19 | Linton, 9.675 | Pratt, 9.875 | Drotar, 9.900 | Scalzo, 9.825 | Park, 9.850 | Jones, 9.850 | 49.300 |
| 02.23 | Swaney, 9.850 | Pratt, 9.825 | Drotar, 9.825 | Scalzo, 9.900 | Park, 9.850 | Jones, 9.950 | 49.375 |
| 03.03 | Swaney, 9.750 | Pratt, 9.800 | Drotar, 9.850 | Linton, 9.900 | Scalzo, 9.825 | Jones, 9.925 | 49.300 |
| 03.10 | | | | | | | |
| 03.15 | | | | | | | |
| 03.23 | | | | | | | |

BEAM

| DATE | 1 | 2 | 3 | 4 | 5 | 6 | TEAM |
|-------|---------------|---------------|-----------------|---------------|---------------|---------------|--------|
| 01.12 | Gamiao, 9.875 | Jones, 9.900 | Williams, 9.750 | Weaver, 9.775 | Linton, 9.150 | Park, 9.725 | 49.025 |
| 01.19 | Gamiao, 9.925 | Jones, 9.875 | Williams, 9.875 | Weaver, 9.825 | Linton, 9.900 | Park, 8.975 | 49.400 |
| 01.26 | Gamiao, 9.875 | Jones, 9.875 | Williams, 9.775 | Weaver, 9.725 | Linton, 9.825 | Park, 9.775 | 49.125 |
| 02.02 | Gamiao, 9.775 | Jones, 9.850 | Swaney, 9.075 | Weaver, 9.925 | Linton, 9.925 | Park, 9.975 | 49.450 |
| 02.09 | Gamiao, 9.925 | Jones, 9.025 | Williams, 9.800 | Weaver, 9.825 | Linton, 9.725 | Park, 9.150 | 48.425 |
| 02.17 | Gamiao, 9.875 | Swaney, 9.775 | Williams, 9.750 | Klein, 9.425 | Weaver, 9.150 | Linton, 9.825 | 48.650 |
| 02.19 | Gamiao, 9.900 | Swaney, 9.800 | Williams, 9.725 | Weaver, 9.225 | Klein, 9.925 | Linton, 9.850 | 49.200 |
| 02.23 | Gamiao, 9.800 | Jones, 9.675 | Swaney, 9.850 | Weaver, 9.800 | Klein, 9.725 | Linton, 9.775 | 48.950 |
| 03.03 | Gamiao, 9.900 | Jones, 9.925 | Williams, 9.800 | Weaver, 9.925 | Klein, 9.925 | Linton, 9.900 | 49.575 |
| 03.10 | | | | | | | |
| 03.15 | | | | | | | |
| 03.23 | | | | | | | |

FLOOR

| DATE | 1 | 2 | 3 | 4 | 5 | 6 | TEAM |
|-------|---------------|--------------|--------------|--------------|-----------------|--------------|--------|
| 01.12 | Gamiao, 9.850 | Klein, 9.850 | Jones, 9.925 | Smith, 9.900 | Williams, 9.950 | Price, 9.950 | 49.575 |
| 01.19 | Klein, 9.850 | Park, 9.825 | Jones, 9.900 | Smith, 9.925 | Williams, 9.875 | Price, 9.850 | 49.400 |
| 01.26 | Gamiao, 9.850 | Klein, 9.875 | Jones, 9.900 | Smith, 9.825 | Williams, 9.950 | Price, 9.900 | 49.475 |
| 02.02 | Klein, 9.600 | Park, 9.850 | Jones, 9.900 | Smith, 9.800 | Williams, 9.925 | Price, 9.900 | 49.375 |
| 02.09 | Klein, 9.850 | Park, 9.825 | Jones, 9.875 | Smith, 9.850 | Williams, 9.900 | Price, 9.950 | 49.425 |
| 02.17 | Gamiao, 9.825 | Klein, 9.750 | Jones, 9.875 | Smith, 9.875 | Williams, 9.925 | Price, 9.950 | 49.450 |
| 02.19 | Gamiao, 9.850 | Klein, 9.875 | Jones, 9.925 | Smith, 9.875 | Williams, 9.950 | Price, 9.950 | 49.575 |
| 02.23 | Gamiao, 9.875 | Klein, 9.875 | Jones, 9.950 | Smith, 9.925 | Williams, 9.950 | Price, 9.975 | 49.675 |
| 03.03 | Gamiao, 9.800 | Klein, 9.875 | Jones, 9.925 | Smith, 9.850 | Williams, 9.950 | Price, 9.925 | 49.525 |
| 03.10 | | | | | | | |
| 03.15 | | | | | | | |
| 03.23 | | | | | | | |

TOP SCORES BY CLASS

FRESHMAN

| VAULT | GYMNAST | SCORE | DATE | OPPONENT |
|-------|----------------|-------|--------|---------------|
| | Michelle Stout | 9.950 | 2/9/07 | No. 1 Florida |

UNEVEN BARS

| GYMNAST | SCORE | DATE | OPPONENT |
|---------------|-------|---------|--------------------|
| Reese Drotar | 9.950 | 2/17/23 | At No. 11 Kentucky |
| Paige Zaziski | 9.950 | 3/13/15 | No. 8 UCLA |

BALANCE BEAM

| GYMNAST | SCORE | DATE | OPPONENT |
|----------------|-------|---------|----------------|
| Priscilla Park | 9.975 | 2/2/24 | at No. 5 LSU |
| Sophia Carter | 9.975 | 1/26/18 | No. 10 Georgia |
| Sophia Carter | 9.975 | 3/2/18 | No. 36 Arizona |

FLOOR EXERCISE

| GYMNAST | SCORE | DATE | OPPONENT |
|-----------------|-------|---------|--------------------|
| Lauren Williams | 9.950 | 2/17/23 | At No. 11 Kentucky |
| Lauren Williams | 9.950 | 2/3/23 | No. 2 Florida |
| Bailey Lovett | 9.950 | 1/17/20 | No. 3 Denver |
| Sarah Shaffer | 9.950 | 3/16/18 | Arkansas Tri Meet |
| Sophia Carter | 9.950 | 1/26/18 | No. 10 Georgia |
| Rachel Barnett | 9.950 | 2/6/04 | No. 14 LSU |
| Rachel Barnett | 9.950 | 1/23/04 | No. 22 Auburn |

ALL-AROUND

| GYMNAST | SCORE | DATE | OPPONENT |
|---------------|--------|---------|-------------------|
| Sarah Shaffer | 39.500 | 3/16/18 | Arkansas Tri Meet |

SOPHOMORE/R-FRESHMAN

| VAULT | GYMNAST | SCORE | DATE | OPPONENT |
|-------|-------------------|--------|---------|--------------------|
| | Leah Smith | 9.950* | 2/17/23 | At No. 11 Kentucky |
| | Makenzie Sedlacek | 9.950 | 2/17/23 | At No. 11 Kentucky |
| | Amanda Wellick | 9.950 | 2/13/15 | No. 6 Alabama |
| | Amanda Wellick | 9.950 | 1/16/15 | Arkansas Tri Meet |
| | Katherine Grable | 9.950 | 1/20/12 | No. 25 LSU |
| | Jaime Pisani | 9.950 | 3/6/10 | No. 22 Minnesota |
| | Jaime Pisani | 9.950 | 2/5/10 | No. 16 Auburn |

UNEVEN BARS

| GYMNAST | SCORE | DATE | OPPONENT |
|---------------|-------|---------|-------------------|
| Hailey Garner | 9.975 | 3/16/18 | Arkansas Tri Meet |

BALANCE BEAM

| GYMNAST | SCORE | DATE | OPPONENT |
|------------------|-------|---------|--------------------|
| Cami Weaver | 9.950 | 1/20/23 | At No. 7 Auburn |
| Bailey Lovett | 9.950 | 3/5/21 | At No. 12 Auburn |
| Michaela Burton | 9.950 | 1/26/18 | No. 10 Georgia |
| Jessica Yamzon | 9.950 | 1/26/18 | No. 10 Georgia |
| Katherine Grable | 9.950 | 4/21/12 | NCAA Championships |
| Katie Hardman | 9.950 | 3/12/04 | At No. 11 Arizona |

FLOOR EXERCISE

| GYMNAST | SCORE | DATE | OPPONENT |
|---------------|-------|---------|--------------------|
| Frankie Price | 9.975 | 2/17/23 | At No. 11 Kentucky |

ALL-AROUND

| GYMNAST | SCORE | DATE | OPPONENT |
|------------------|--------|---------|------------|
| Katherine Grable | 39.725 | 1/20/12 | No. 25 LSU |

*denotes a perfect score of 9.950 for Yurchenko full

JUNIOR/R-SOPHOMORE

| VAULT | GYMNAST | SCORE | DATE | OPPONENT |
|-------|------------------|-------|---------|--------------------|
| | Kennedy Hambrick | 9.975 | 2/19/21 | No. 25 Missouri |
| | Michelle Stout | 9.975 | 4/16/09 | NCAA Championships |

UNEVEN BARS

| GYMNAST | SCORE | DATE | OPPONENT |
|------------------|-------|--------|---------------------------|
| Kennedy Hambrick | 9.950 | 4/3/21 | Tuscaloosa Regional Final |

BALANCE BEAM

| GYMNAST | SCORE | DATE | OPPONENT |
|------------------|-------|---------|-----------------|
| Kennedy Hambrick | 9.950 | 2/26/21 | No. 7 Alabama |
| Kennedy Hambrick | 9.950 | 2/19/21 | No. 25 Missouri |
| Michaela Burton | 9.950 | 2/15/19 | No. 11 Auburn |

FLOOR EXERCISE

| GYMNAST | SCORE | DATE | OPPONENT |
|---------------|-------|---------|----------------|
| Frankie Price | 9.975 | 2/23/24 | No. 6 Kentucky |

ALL-AROUND

| GYMNAST | SCORE | DATE | OPPONENT |
|------------------|--------|---------|-----------------|
| Kennedy Hambrick | 39.750 | 2/19/21 | No. 25 Missouri |

SENIOR/GRADUATE

| VAULT | GYMNAST | SCORE | DATE | OPPONENT |
|-------|------------------|-------|---------|-------------------|
| | Katherine Grable | 9.975 | 4/20/14 | NCAA Event Finals |

UNEVEN BARS

| GYMNAST | SCORE | DATE | OPPONENT |
|---------------|-------|---------|-------------------|
| Sarah Shaffer | 9.950 | 3/31/22 | Norman Regional |
| Sarah Shaffer | 9.950 | 3/6/22 | Elevate The Stage |
| Maggie O'Hara | 9.950 | 1/14/22 | No. 8 Auburn |
| Maggie O'Hara | 9.950 | 2/26/21 | No. 7 Alabama |
| Maggie O'Hara | 9.950 | 1/15/21 | No. 5 LSU |
| Braie Speed | 9.950 | 3/16/18 | Arkansas Tri Meet |
| Jaime Pisani | 9.950 | 1/20/12 | No. 25 LSU |

BALANCE BEAM

| GYMNAST | SCORE | DATE | OPPONENT |
|------------------|-------|---------|-----------------|
| Norah Flatley | 9.975 | 2/24/23 | No. 15 Missouri |
| Kennedy Hambrick | 9.975 | 2/6/22 | No. 58 SEMO |

FLOOR EXERCISE

| GYMNAST | Score | Date | Opponent |
|------------------|-------|---------|----------------|
| Katherine Grable | 9.975 | 3/14/14 | No. 2 Oklahoma |
| Jaime Pisani | 9.975 | 2/3/12 | No. 13 Auburn |

ALL-AROUND

| GYMNAST | SCORE | DATE | OPPONENT |
|------------------|--------|---------|-----------------|
| Katherine Grable | 39.725 | 2/21/14 | No. 31 Kentucky |
| Jaime Pisani | 39.725 | 2/2/12 | No. 13 Auburn |

INDIVIDUAL RECORDS

VAULT

| SCORE | GYMNAST | DATE (LAST) | OPPONENT |
|-------|-----------------------|-------------|---------------------|
| 9.975 | Kennedy Hambrick | 2/19/21 | No. 25 Missouri |
| | Katherine Grable | 4/20/14 | NCAA Event Finals |
| | Michelle Stout | 4/16/09 | NCAA Champ. |
| 9.950 | Leah Smith* | 2/17/23 | at No. 11 Kentucky |
| | Makenzie Sedlacek | 2/17/23 | at No. 11 Kentucky |
| | Kennedy Hambrick | 3/5/21 | at No. 12 Auburn |
| | Amanda Wellick (2x) | 2/13/15 | Arkansas Tri-Meet |
| | Heather Elswick | 1/16/15 | No. 6 Alabama |
| | Katherine Grable (7x) | 4/18/14 | NCAA Ev. Semifinals |
| | Jaime Pisani (3x) | 3/16/12 | at No. 16 Missouri |
| | Casey Jo Magee (2x) | 3/1/10 | No. 2 Oklahoma |
| | Michelle Stout | 2/9/07 | No. 1 Florida |
| 9.925 | Cami Weaver | 2/23/24 | No. 16 Kentucky |
| | Lauren Williams (4x) | 2/23/24 | No. 16 Kentucky |
| | Leah Smith | 1/19/24 | at No. 3 Alabama |
| | Amanda Elswick | 3/13/22 | Denver Quad |
| | Kennedy Hambrick (3x) | 3/13/22 | Denver Quad |
| | Savannah Pennese | 3/13/22 | Denver Quad |
| | Sarah Shaffer (2x) | 3/13/22 | Denver Quad |
| | Braie Speed | 2/23/18 | at No. 5 Florida |

*denotes a perfect score of 9.950 for a Yurchenko full
8 additional scores of 9.925 occurred before 2018

BALANCE BEAM

| SCORE | GYMNAST | DATE (LAST) | OPPONENT |
|--------|-----------------------|-------------|------------------------|
| 9.975 | Priscilla Park | 2/2/24 | at No. 5 LSU |
| | Norah Flatley | 2/24/23 | No. 14 Missouri |
| | Kennedy Hambrick | 2/6/22 | No. 58 SEMO |
| | Sophia Carter (2x) | 3/2/18 | No. 36 Arizona |
| 9.950 | Norah Flatley | 3/30/23 | Norman Regional Semi |
| | Cami Weaver | 1/20/23 | at No. 7 Auburn |
| | Amanda Elswick (2x) | 3/4/22 | at No. 7 Alabama |
| | Kennedy Hambrick (3x) | 1/14/22 | No. 8 Auburn |
| | Bailey Lovett | 3/5/21 | at No. 12 Auburn |
| | Micaela Burton (2x) | 2/5/19 | at No. 11 Auburn |
| | Jessica Yamzon | 1/26/18 | No. 11 Georgia |
| | Katherine Grable | 4/20/12 | NCAA Champ. SII |
| | Jaime Pisani (2x) | 4/20/12 | NCAA Champ. SII |
| | Casey Jo Magee (3x) | 3/19/10 | No. 2 Oklahoma |
| | Katie Hardman | 3/12/04 | at No. 11 Arizona |
| 9.9375 | Norah Flatley | 4/13/23 | NCAA Championships |
| 9.925 | Maddie Jones | 3/3/24 | at No. 13 Missouri |
| | Hailey Klein (2x) | 3/3/24 | at No. 13 Missouri |
| | Cami Weaver (3x) | 3/3/24 | at No. 13 Missouri |
| | Sirena Linton | 2/2/24 | at No. 5 LSU |
| | Kalyxta Gamiao | 1/19/24 | No. 3 Alabama |
| | Norah Flatley | 3/5/23 | at No. 18 Georgia |
| | Cally Swaney | 2/3/23 | No. 2 Florida |
| | Amanda Elswick (2x) | 2/20/22 | at No. 10 Mizzou w/LSU |
| | Kennedy Hambrick (6x) | 1/28/22 | at No. 4 Florida |
| | Bailey Lovett (2x) | 1/28/22 | at No. 4 Florida |
| | Maggie O'Hara (2x) | 1/22/21 | No. 1 Florida |
| | Sophia Carter (2x) | 2/7/20 | No. 10 Georgia |
| | Hailey Garner (2x) | 3/24/18 | SEC Championships |
| | Katherine Grable (7x) | 3/14/14 | No. 2 Oklahoma |
| | Jaime Pisani (2x) | 4/7/12 | NCAA Regional |
| | Casey Jo Magee (6x) | 2/26/10 | at No. 23 Washington |
| | Dana McQuillin | 3/5/04 | GymBack Invite |
| 9.9125 | Kennedy Hambrick | 4/16/21 | NCAA Championships |

UNEVEN BARS

| SCORE | GYMNAST | DATE (LAST) | OPPONENT |
|-------|-----------------------|-------------|---------------------------|
| 9.975 | Hailey Garner | 3/16/18 | Arkansas Tri |
| 9.950 | Maddie Jones (3x) | 2/23/24 | No. 6 Kentucky |
| | Reese Drotar | 2/17/23 | at No. 11 Kentucky |
| | Sarah Shaffer (2x) | 3/31/22 | Norman Regional Semi |
| | Maggie O'Hara (3x) | 1/14/22 | No. 8 Auburn |
| | Kennedy Hambrick (2x) | 4/3/21 | Tuscaloosa Regional Final |
| | Braie Speed (2x) | 3/16/18 | Arkansas Tri |
| | Emily Peacock | 2/24/06 | No. 18 Kentucky |
| | Jaime Pisani | 1/20/12 | No. 25 LSU |
| | Paige Zaziski | 3/13/15 | No. 8 UCLA |
| 9.925 | Maddie Jones (2x) | 3/3/24 | at No. 13 Missouri |
| | Priscilla Park | 1/19/24 | at No. 3 Alabama |
| | Reese Drotar (2x) | 3/30/23 | Norman Regional Semi |
| | Norah Flatley (2x) | 3/10/23 | No. 19 Minnesota |
| | Kennedy Hambrick (3x) | 3/6/22 | Elevate The Stage |
| | Sarah Shaffer (2x) | 2/6/22 | No. 58 SEMO |
| | Jensen Scalzo (2x) | 1/14/22 | No. 8 Auburn |
| | Maggie O'Hara (2x) | 4/16/21 | NCAA Championships |
| | Hailey Garner (3x) | 3/16/19 | Arkansas Quad |
| | Michaela Burton | 3/8/19 | Elevate The Stage |
| | Sydney Laird | 3/2/18 | vs. Arizona |

9 additional scores of 9.925 occurred before 2018

FLOOR EXERCISE

| SCORE | GYMNAST | DATE (LAST) | OPPONENT |
|--------|------------------------|-------------|------------------------|
| 9.975 | Frankie Price (2x) | 2/23/24 | No. 16 Kentucky |
| | Katherine Grable | 3/14/14 | No. 2 Oklahoma |
| | Jaime Pisani | 2/3/12 | No. 13 Auburn |
| 9.9625 | Katherine Grable | 4/20/14 | NCAA Event Finals |
| 9.950 | Maddie Jones | 2/23/24 | No. 6 Kentucky |
| | Lauren Williams (7x) | 3/3/24 | at No. 13 Missouri |
| | Frankie Price (5x) | 2/19/24 | at TWU Quad |
| | Leah Smith | 1/27/23 | No. 8 LSU |
| | Kennedy Hambrick (3x) | 2/6/22 | No. 58 SEMO |
| | Sophia Carter (9x) | 3/20/21 | SEC Championships |
| | Bailey Lovett (3x) | 3/5/21 | at No. 12 Auburn |
| | Sarah Shaffer | 3/16/18 | Arkansas Tri |
| | Amanda Wellick (2x) | 2/26/16 | No. 23 Kentucky |
| | Katherine Grable (13x) | 4/18/14 | NCAA Ev. Semifinals |
| | Jaime Pisani (11x) | 3/16/12 | at No. 16 Missouri |
| | Casey Jo Magee | 3/12/10 | No. 40 Pittsburgh |
| | Rachel Barnett (2x) | 2/6/04 | No. 14 LSU |
| 9.925 | Maddie Jones (4x) | 3/3/24 | at No. 13 Missouri |
| | Frankie Price (3x) | 3/3/24 | at No. 13 Missouri |
| | Lauren Williams (5x) | 2/17/24 | at Metroplex Challenge |
| | Leah Smith | 1/9/24 | at No. 3 Alabama |
| | Norah Flatley | 3/10/23 | No. 19 Minnesota |
| | Madison Hickey (2x) | 2/24/23 | No. 14 Missouri |
| | Sophia Carter (9x) | 4/2/21 | Tuscaloosa Regional |
| | Kennedy Hambrick (3x) | 2/25/22 | No. 26 Georgia |
| | Bailey Lovett (4x) | 4/2/22 | Norman Regional Final |
| | Abby Johnston | 2/26/21 | No. 7 Alabama |
| | Sarah Shaffer (4x) | 2/26/21 | No. 7 Alabama |
| | Sydney McGlone (2x) | 3/16/19 | Arkansas Quad |
| | Samantha Nelson (2x) | 1/29/16 | No. 9 Auburn |

11 additional scores of 9.925 occurred before 2016

ALL-AROUND

| SCORE | GYMNAST | DATE (LAST) | OPPONENT |
|---------|-----------------------|-------------|-----------------------|
| 39.750 | Kennedy Hambrick | 2/19/21 | No. 25 Missouri |
| 39.725 | Katherine Grable (2x) | 2/22/14 | No. 31 Kentucky |
| | Jaime Pisani | 2/3/12 | No. 13 Auburn |
| 39.700 | Kennedy Hambrick | 3/5/21 | at No. 12 Auburn |
| 39.675 | Katherine Grable | 4/5/14 | Fayetteville Regional |
| | Jaime Pisani | 3/2/12 | No. 18 Minnesota |
| | Casey Jo Magee | 3/19/10 | No. 2 Oklahoma |
| 39.650 | Katherine Grable | 4/6/13 | NCAA Regional |
| | Casey Jo Magee | 3/19/10 | No. 2 Oklahoma |
| 39.625 | Katherine Grable (3x) | 3/14/14 | No. 2 Oklahoma |
| | Jaime Pisani (2x) | 4/20/12 | NCAA Champ. SII |
| | Casey Jo Magee (2x) | 3/12/10 | No. 40 Pittsburgh |
| 39.6125 | Kennedy Hambrick | 4/16/21 | NCAA Championships |
| 39.600 | Kennedy Hambrick | 2/7/20 | No. 10 Georgia |
| | Amanda Wellick | 2/26/16 | No. 23 Kentucky |
| | Katherine Grable | 3/1/14 | at No. 6 Georgia |
| | Jaime Pisani (3x) | 3/16/12 | at No. 16 Missouri |
| | Casey Jo Magee | 4/10/10 | NCAA Champ. SII |
| 39.575 | Norah Flatley | 1/13/23 | No. 8 Alabama |
| | Kennedy Hambrick | 3/31/22 | Norman Regional |
| | Jaime Pisani | 1/10/12 | No. 25 LSU |
| 39.550 | Norah Flatley (2x) | 3/5/23 | at No. 18 Georgia |
| | Kennedy Hambrick | 4/2/21 | Tuscaloosa Regional |
| | Katherine Grable (2x) | 2/5/12 | No. 5 Oklahoma |
| | Casey Jo Magee | 4/22/10 | NCAA Champ. SII |



TEAM RECORDS

VAULT

| SCORE | DATE | OPPONENT |
|------------|---------|----------------------|
| 1. 49.525 | 2/17/23 | at No. 11 Kentucky |
| 2. 49.500 | 3/13/22 | Denver Quad |
| 3. 49.450 | 1/31/14 | No. 12 Auburn |
| | 4/21/12 | at NCAA Super Six |
| | 4/16/09 | at NCAA Championship |
| | 2/20/09 | No. 3 Georgia |
| 7. 49.425 | 1/19/24 | at No. 3 Alabama |
| | 2/6/15 | No. 2 Florida |
| | 2/22/13 | No. 4 Alabama |
| 10. 49.400 | 2/23/24 | No. 6 Kentucky |
| | 2/17/12 | at No. 6 Alabama |
| | 1/20/12 | No. 25 LSU |

UNEVEN BARS

| SCORE | DATE | OPPONENT |
|------------|---------|-------------------|
| 1. 49.575 | 3/2/18 | Arizona |
| 2. 49.550 | 1/14/22 | No. 8 Auburn |
| | 3/16/18 | Arkansas Tri |
| | 2/26/16 | No. 23 Kentucky |
| 5. 49.500 | 3/6/22 | Elevate the Stage |
| 6. 49.475 | 3/5/23 | at No. 18 Georgia |
| 7. 49.450 | 3/31/22 | Norman Regional |
| | 2/9/18 | Auburn |
| | 1/20/12 | No. 25 LSU |
| 10. 49.425 | 3/5/21 | at No. 12 Auburn |
| | 2/7/20 | No. 10 Georgia |

BALANCE BEAM

| SCORE | DATE | OPPONENT |
|-----------|---------|----------------------|
| 1. 49.575 | 3/3/24 | at No. 13 Missouri |
| 2. 49.525 | 2/24/23 | No. 14 Missouri |
| 3. 49.475 | 1/28/22 | at No. 4 Florida |
| 4. 49.450 | 2/4/24 | at No. 5 LSU |
| | 4/20/12 | NCAA Super Six |
| 6. 49.425 | 1/26/18 | No. 11 Georgia |
| 7. 49.400 | 1/19/24 | at No. 3 Alabama |
| | 2/19/21 | No. 25 Missouri |
| | 3/2/18 | vs. Arizona |
| | 3/16/07 | at No. 23 Arizona St |

FLOOR EXERCISE

| SCORE | DATE | OPPONENT |
|-----------|---------|--------------------|
| 1. 49.675 | 2/23/24 | No. 6 Kentucky |
| 2. 49.600 | 1/16/15 | No. 6 Alabama |
| 3. 49.575 | 2/19/24 | at TWU Quad |
| | 1/12/24 | No. 15 Georgia |
| | 1/27/23 | No. 8 LSU |
| | 2/26/21 | No. 7 Alabama |
| | 2/19/21 | No. 25 Missouri |
| 8. 49.550 | 2/6/22 | No. 58 SEMO |
| 9. 49.525 | 3/3/24 | at No. 13 Missouri |
| | 1/24/20 | No. 13 Kentucky |
| | 3/5/04 | GymBack Invite |

TEAM TOTAL

| SCORE | DATE | OPPONENT |
|-------------|---------|----------------------|
| 1. 197.650 | 3/3/24 | at No. 13 Missouri |
| 2. 197.525 | 1/19/24 | at No. 3 Alabama |
| 3. 197.475 | 1/27/23 | No. 8 LSU |
| 4. 197.425 | 3/5/21 | at No. 12 Auburn |
| 5. 197.400 | 2/23/24 | No. 16 Kentucky |
| | 2/3/23 | No. 2 Florida |
| 7. 197.375 | 2/19/24 | at TWU Quad |
| 8. 197.350 | 2/19/21 | No. 25 Missouri |
| 9. 197.300 | 3/16/18 | Arkansas Tri |
| 10. 197.275 | 3/30/23 | Norman Regional Semi |
| | 3/2/18 | Arizona |



JORDYN WIEBER

FIFTH-YEAR HEAD COACH

Olympic gold medalist Jordyn Wieber was introduced as the head coach of the Arkansas Women's Gymnastics program on Wednesday, April 24, 2019, by Vice Chancellor and Director of Athletics Hunter Yurachek.

During her fourth season in 2023, Wieber guided the Gymbacks to their 19th consecutive regional appearance. The team set a new regional team score record of 197.275, and a new regional floor record of 49.500. The team finished the year ranked 17th in the country, maintaining the program's 18-year streak in the top 20.

Graduate transfer Norah Flatley and freshman Lauren Williams both earned berths to the NCAA Championships as individuals, extending Wieber's unblemished national appearance streak in each eligible year. Flatley earned her fourth All-American honor at the event on balance beam with a score of 9.9375, which is the best-ever score by a Gymback as an individual beam qualifier.

Arkansas' 196.825 at SEC Championships in 2023 is a new program best, and the Hogs also earned SEC highs on vault (49.425) and bars (49.175). Five Gymbacks earned All-SEC or All-SEC Freshman honors at the meet: Norah Flatley (VT, FX, AA), Lauren Williams (VT, FX), Reese Drotar (UB), Frankie Price (VT) and Cami Weaver (VT), which is the most since 2018 and second-most ever for Arkansas.

The Gymbacks also broke several records and hit new milestones in the regular season, with a new program score record of 197.475 against LSU on Jan. 27, a new program vault record of 49.525 against Kentucky on Feb. 17, and a new program beam record of 49.525 against Missouri on Feb. 24. Arkansas posted five scores above 197 for the second time in program history in the 2023 slate, the first in 2021, also under Wieber.

The Gymbacks continued to grow their fanbase with new single meet (11,031), home single season (36,619), and average attendance (7,324) records in 2023, the latter two ranking sixth and seventh in the country. Arkansas also sold out Barnhill Arena for the first time in program history on Jan. 27, when 7,147 fans were in the building to watch the Hogs take down the LSU Tigers.

Wieber has coached three regular-season All-Americans in Sophia Carter (2020), Maggie O'Hara (2021) and Kennedy Hambrick (2020, 2021). Hambrick became the new all-around score record holder (39.750) during the 2021 season, a record that had gone unbroken for seven years prior. Under her guidance in and out of the gym, the Gymbacks were awarded the Arkansas Athletics Lee Spencer Cup for the first time ever in 2022, which is awarded to the team that earns the most points in the areas of personal and career development, community engagement, and academic and athletic excellence. Arkansas also saw its first SEC Scholar-Athlete of the Year in 10 years in 2022 with Bailey Lovett.

The Gymbacks earned their first-ever spot in the SEC night session in 2021 and advanced to the NCAA regional final after scoring a post-season program best 197.250 on day one. In total, Arkansas registered five scores of 197.000 or better in 2021 for the first time in program history.

In 2020, the Gymbacks ranked as high as fourth in the nation on floor and finished the season ninth in the nation. It was against No. 13 Kentucky on Jan. 24 that Arkansas scored a 49.525 on the floor, the second-highest event total in program history. Headed into 2022, Arkansas is holding onto the third-longest active streak for meets with a score of 49.000 or higher, coming in with 32 straight meets, behind Alabama (33) and Florida (35). In Wieber's first year, Arkansas scored a 49.00 or higher in 14 of 16 events over the course of four home meets, nearly 90 percent of all events.

The Razorbacks' success on the floor helped them lock in back-to-back SEC wins against No. 20 Missouri and No. 10 Georgia mid-way through the season. The consecutive wins marked the first time since 2017 that Arkansas won two-straight conference meets and consecutive meets against a ranked opponent.

Arkansas saw six Gymbacks wrap up the 2020 season ranked in the top 100 by Road to Nationals in at least one event, with four Hogs finishing with multiple top 100 rankings. With Wieber's lead, Arkansas won 27 event titles through 10 meets. Hambrick finished the season with the most individual titles among the Gymbacks, securing 11 event titles including a team-high four all-around titles.

The first home meet of the Wieber era was held on Jan. 17 against No. 3 Denver, bringing a then-record crowd of 6,714 fans to Barnhill Arena. On Feb. 21, Coach Wieber and her Arkansas squad hosted Auburn for a Women's Empowerment Meet, the first of its kind in NCAA gymnastics and now an annual tradition for the Gymbacks.

Prior to her arrival in Fayetteville, Wieber served as an assistant for legendary UCLA coach Valorie Kondos Field. Wieber wrapped up her third season as a volunteer assistant coach at UCLA and her sixth with the program in 2019, assisting the team in a variety of roles during her first three years in Westwood following her Olympic career.

Wieber coached the Bruins on floor exercise, an event in which UCLA finished the 2018 and 2019 regular seasons ranked No. 1 in the nation. In 2019, the Bruins recorded scores of 49.5 or better in 11 of 14 meets, averaging a national-best 49.604 on floor. UCLA hit a season-high 49.825 on March 16, which ranks No. 3 all-time in school history, behind five scores of 9.925 or better in that meet, including two perfect 10s. The floor squad also posted marks of 49.775 (March 23) and 49.750 (Feb. 16) over the course of the year, as four Bruins earned regular season All-America honors in the event - Katelyn Ohashi, Kyla Ross, Gracie Kramer and Felicia Hano.

At the NCAA Championships on April 19-20, Wieber coached Ross to the individual floor title with a score of 9.950, the program's second in as many years after Ohashi took home the crown in 2018. After winning their semifinal session with a 197.650 (49.6125 in the floor), UCLA finished third overall in the finals.

The 2018 Bruins scored 49.4 or higher in 11 meets and 49.6 or higher in three meets, including a national season-high of 49.775 set Feb. 25. She and her fellow UCLA coaches were named the 2018 West Region Assistant Coaches of the Year, as they helped lead the Bruins to Pac-12, NCAA regional and NCAA national titles.

Wieber, who has been a vocal advocate for safe sport, has won several awards in the past several years, including the Arthur Ashe Courage Award at the ESPYs, the Rising Star Award by the Los Angeles Business Journal, and the Giant Steps A Hero Among Us Award.

A member of the "Fierce Five" United States squad that won team gold at the 2012 Olympics, Wieber was a two-time U.S. all-around champion (2011 and 2012) and the 2011 World all-around champion. Her illustrious elite career included three medals (all-around and team gold, beam bronze) at the 2011 World Championships, four U.S. senior national titles (all-around, bars and floor in 2011 and all-around in 2012), and three American Cup all-around titles. Wieber officially retired from competitive gymnastics in 2015.

Wieber, from DeWitt, Mich., graduated from UCLA in 2017 with a degree in Psychology. She was a 2016 inductee into the Greater Lansing Sports Hall of Fame, a 2021 Michigan Sports Hall of Fame Inductee and is also a member of the USA Gymnastics Hall of Fame.



GYMBACK ROUTINES/CAREER HIGHS

CHANDLER BUNTIN

VAULT

Yurchenko full
SEASON/CAREER HIGH: --/--

FLOOR

Rudi + layout stepout
Switch half + wolf 1.5 turn
Round-off 1.5 layout
Straddle jump
SEASON/CAREER HIGH: --/--

REESE DROTAR

BARS

Maloney
Bail handstand
Double layout dismount
SEASON/CAREER HIGH: 9.900/9.950

BEAM

Side aerial back handspring
Full turn + beat jump + stag handstand
Split jump + sheep jump
Gainer layout full dismount
SEASON/CAREER HIGH: --/--

DAKOTA ESSENPRIES

VAULT

Yurchenko 1.5
SEASON/CAREER HIGH: 9.825/9.825

BARS

Piked jaeger
Bail handstand
Double layout dismount
SEASON/CAREER HIGH: --/--

FLOOR

Full-in
Switch leap + switch full
Round-off 1.5 front layout
SEASON/CAREER HIGH: --/--

KALYXTA GAMIAO

VAULT

Yurchenko full
SEASON/CAREER HIGH: --/--

BEAM

Back layout stepout + layout stepout
Side somi
Switch leap + split jump
Full turn
Round off 1.5 dismount
SEASON/CAREER HIGH: 9.925/9.925

FLOOR

Double pike
1.5 + round-off back handspring + double full
Tour jete half + split full
Double tuck
SEASON/CAREER HIGH: 9.875/9.875

MADDIE JONES

BARS

Piked jaeger
Pak salto
Double layout dismount
SEASON/CAREER HIGH: 9.950/9.950

BEAM

Handspring front walkover mount
Front aerial + back handspring + back handspring
Full turn
Split jump + stag ring jump
Front layout full dismount
SEASON/CAREER HIGH: 9.925/9.925

FLOOR

Front double full
Back layout 1.5 + front layout
Switch ring leap + switch leap half
Rudi
SEASON/CAREER HIGH: 9.950/9.950

EMMA KELLEY

VAULT

Yurchenko full
SEASON/CAREER HIGH: --/9.875

HAILEY KLEIN

VAULT

Yurchenko 1.5
SEASON/CAREER HIGH: 9.875/9.875

BEAM

Straddle split mount
Side aerial + layout stepout
Switch leap + straddle jump
Full turn
Round-off 1.5 dismount
SEASON/CAREER HIGH: 9.925/9.925

FLOOR

Front layout stepout + round-off back handspring + double back tuck
Switch side + Popa + straddle Shushanova
Double pike
SEASON/CAREER HIGH: 9.875/9.875

SIRENA LINTON

VAULT

Yurchenko full
SEASON/CAREER HIGH: --/9.700

BARS

Toe-on toe-off + Maloney
Pak salto
Double layout dismount
SEASON/CAREER HIGH: 9.900/9.900

BEAM

Double wolf turn
Back handspring + back handspring + layout stepout
Switch leap + Split jump
Round-off 1.5 dismount
SEASON/CAREER HIGH: 9.925/9.925

FLOOR

Double-twisting full turn
Front double full
Switch side + Popa
Round-off 1.5 + layout stepout
SEASON/CAREER HIGH: --/--

PRISCILLA PARK

VAULT

Yurchenko full
SEASON/CAREER HIGH: 9.850/9.850

BARS

Toe-on toe-off + Ray
Pak salto
Double layout dismount
SEASON/CAREER HIGH: 9.925/9.925

BEAM

Full turn
Back handspring + layout stepout + layout stepout
Switch leap + switch leap
Side aerial + layout 1.5 dismount
SEASON/CAREER HIGH: 9.975/9.975

FLOOR

Full-in
Double tuck
Switch half + wolf jump
Round-off 1.5 + front layout
SEASON/CAREER HIGH: 9.850/9.850

GYMBACK ROUTINES/CAREER HIGHS

JAIME PRATT

BARS

Ray
Bail handstand
Toe Hecht
Double layout dismount
SEASON/CAREER HIGH: 9.900/9.900

FRANKIE PRICE

VAULT

Yurchenko full
SEASON/CAREER HIGH: 9.875/9.900

FLOOR

Double layout
Switch side + Popa + Popa
Front layout + front full
SEASON/CAREER HIGH: 9.975/9.975

JENSEN SCALZO

BARS

Blind change
Jaeger + overshoot
Double layout dismount
SEASON/CAREER HIGH: 9.900/9.925

MAKENZIE SEDLACEK

VAULT

Yurchenko 1.5
SEASON/CAREER HIGH: 9.850/9.950

BARS

Toe-on toe off + pak salto
Maloney half
Full-twisting double tuck dismount
SEASON/CAREER HIGH: --/9.700

FLOOR

Full in + Double tuck
Switch half + Popa
Round-off 1.5 front layout
SEASON/CAREER HIGH: --/9.900

LEAH SMITH

VAULT

Yurchenko full
SEASON/CAREER HIGH: 9.925/9.950

BARS

Toe-on toe-off
Maloney
Bail handstand
Double layout dismount
SEASON/CAREER HIGH: --/9.850

FLOOR

Front layout stepout + round-off back handspring +
double back tuck
Switch side + Popa
Double pike
SEASON/CAREER HIGH: 9.925/9.950

CALLY SWANEY

VAULT

Yurchenko half
SEASON/CAREER HIGH: --

BARS

Toe on toe off + Ray
Pak salto
Double layout dismount
SEASON/CAREER HIGH: 9.900/9.900

BEAM

Back handspring catch (candle) mount
Cat leap + front aerial
Back handspring + layout stepout
Switch leap + split jump
Full turn
Back handspring + layout 1.5 dismount
SEASON/CAREER HIGH: 9.850/9.925

CAMI WEAVER

VAULT

Yurchenko full
SEASON/CAREER HIGH: 9.925/9.925

BARS

Straddle jaeger
Pak salto
Double layout dismount
SEASON/CAREER HIGH: --/--

BEAM

Back handspring + layout stepout
Straddle jump + ring leap
Side aerial
Full turn
Round-off layout 1.5 dismount
SEASON/CAREER HIGH: 9.925/9.950

LAUREN WILLIAMS

VAULT

Yurchenko 1.5
SEASON/CAREER HIGH: 9.925/9.925

BEAM

Back handspring + layout stepout
Switch leap + straddle 1/4
Front toss
Full turn
Round-off 1.5 dismount
SEASON/CAREER HIGH: 9.875/9.875

FLOOR

Full in
Round-off 1.5 front layout
Switch side + Popa
Double tuck
SEASON/CAREER HIGH: 9.950/9.950