



2023



ARKANSAS

Gymnastics

MEET
NOTES



THE SCHEDULE

OVERALL: 3-7 | SEC: 1-5 | H: 1-3 | A: 1-2 | N: 1-2

JAN. 7	VS NEBRASKA	LINCOLN, NEB.	W, 196.225-195.000
JAN. 13	VS ALABAMA	BARNHILL ARENA	L, 195.525-196.525
JAN. 20	AT AUBURN	AUBURN, ALA.	L, 197.500-196.675
JAN. 27	VS LSU	BARNHILL ARENA	W, 197.475-197.250
FEB. 3	VS FLORIDA	BUD WALTON ARENA	L, 197.400-197.875
FEB. 11	METROPLEX CHALLENGE		3rd of 4, 197.125
FEB. 17	AT KENTUCKY	LEXINGTON, KY.	L, 195.400-197.875
FEB. 24	VS MISSOURI	BARNHILL ARENA	L, 196.650-197.850
MAR. 5	AT GEORGIA	DULUTH, GA.	1:00 N/A
MAR. 10	VS MINNESOTA	BUD WALTON ARENA	6:45 SECN+
MAR. 18	SEC CHAMPIONSHIPS	DULUTH, GA.	TBA SEC NETWORK

MARCH 29-APRIL 2: NCAA REGIONALS
APRIL 14-16: NCAA CHAMPIONSHIPS

MEET
09



VS **GEORGIA** IN **DULUTH**

MARCH 5, 2023 AT 1:00 PM (CT)

GAS SOUTH ARENA
LIVE SCORING: STATBROADCAST

GYMBACK NOTABLES

Hogs Set New Program Event High For Second Consecutive Week, Fall To Tigers

Arkansas took the floor for its final meet at Barnhill Arena on Feb. 24 and set a program high for the second week in a row. The No. 17 Hogs were defeated by the No. 14 Missouri Tigers 196.650-197.850 but hit a new record of 49.525 on beam in the third rotation. This comes a week after the Gymbacks set a new program vault high, also of 49.525, last Friday. The beam team performance was highlighted by a 9.975 for graduate transfer Norah Flatley, which is a new career high and was good for first place on the night. Sophomore Kalyxta Gamiao also earned a career high, a 9.925, for a share of second place.

Arkansas Sets New Program Vault Record, Personal Bests In Loss To Kentucky

While a tough final rotation put a meet victory out of reach for the Gymbacks on Feb. 17, the team still had plenty of highlights in the SEC dual. The No. 11 Wildcats came away with a 197.875-195.400 victory over the No. 14 Hogs in team competition. Along the way, Arkansas recorded a new program high of 49.525 on vault, which included a perfect score. Sophomore Leah Smith nailed her Yurchenko full and stuck the landing for a 9.950 from both judges, the best possible mark for a vault of its kind, and she claimed a share of first place. The Gymbacks saw two perfect 10 scores thrown on the night. Sophomore Maddie Jones finished with a career high 9.950 on bars with a 9.900/10.000 split, good for a two-way tie for first. While redshirt freshman Frankie Price got a 9.950/10.000 split for a 9.975 on floor, which tied for first. The score is Arkansas' best on floor since 2014, when it was recorded by 2014 NCAA floor champion Katherine Grable. Both Jones and Smith shared the event titles with their teammates. Freshman Reese Drotar recorded a new personal best on bars for the second consecutive week with a 9.950, and sophomore Makie Sedlacek scored 9.950 on vault for the first time for her Yurchenko 1.5.

Gymbacks Keep Up Consistency, Place Third At Metroplex

The Arkansas gymnastics team yet again showed what it's capable of as the Hogs posted a team score of 197+ for the third consecutive week in Feb. 11's Metroplex Challenge from Fort Worth. The No. 16 Gymbacks came in third behind No. 1 Oklahoma (198.125) and No. 11 Alabama (198.000) and defeated No. 24 Stanford (196.725) with a score of 197.125. It's a new road high for Arkansas this season, and the team's 20th mark over 197 in program history. The Hogs have posted 197 or above in three consecutive weeks just once before, in head coach Jordyn Wieber's second season in 2021. The team's average in that span in was 197.258, while this year's Gymbacks have posted an average score of 197.333 over the last three outings. Two Gymbacks earned new career highs of 9.925 on the night, senior Maddie Hickey on floor and freshman Reese Drotar on bars. Drotar's routine was part of a huge rotation for Arkansas, in which the Hogs earned a season-best 49.375. Graduate transfer Norah Flatley had a podium finish for Arkansas, as her 9.900 on beam placed her a five-way tie for second.

Arkansas Sets New Attendance, Personal Highs From Bud Walton Arena

The Gymbacks made their return to Bud Walton Arena on Feb. 3 and put on a show in front of a program record 11,031 fans. No. 18 Arkansas fell to No. 2 Florida 197.400-197.875, but the team had plenty of high points on the day. The score is the Hogs' third-highest ever as a program, and a new record in Bud Walton Arena. Arkansas also earned a new beam best for 2023 with a 49.350, and outscored Florida on floor 49.475-49.250. Freshman and SEC Freshman of the Week Lauren Williams earned a share of the floor title with a personal high of 9.950, and fellow freshman Cally Swaney earned new career bests on both bars and beam. Her 9.925 on beam was good for third place. For the second consecutive year, the Hogs set a new attendance high at Bud Walton Arena, and the meet is the fourth highest-attended women's event ever held at the venue.

NUMBERS TO KNOW

49.525

New program beam record set by Arkansas against Missouri on Feb. 24

9.975

Program record individual beam score matched by graduate student Norah Flatley on Feb. 24

47

This week's meeting between the Bulldogs and Razorbacks will be No. 47 all-time

2021

Arkansas' first and only win in Athens over Georgia came two seasons ago. The Hogs are 1-9 on the road in the all-time series

FOLLOW THE SHOW

TWITTER @RAZORBACKGYM
INSTAGRAM @RAZORBACKGYM
FACEBOOK ARKANSAS RAZORBACK GYMNASTICS

BY THE NUMBERS (NQS)

ARKANSAS	49.270	49.295	49.170	49.360	196.815
	VAULT	BARS	BEAM	FLOOR	NQS
GEORGIA	49.115	49.300	49.160	49.305	196.710

MEET NINE VS **GEORGIA** MARCH 5, 2023

ALPHABETICAL ROSTER

NAME	EVENTS	CLASS	Ht.	HOMETOWN	CLUB GYM/PREV. SCHOOL
Reese Drotar	AA	Freshman	5-8	Los Gatos, Calif.	Airbone Gymnastics
Norah Flatley	AA	Graduate	5-1	Des Moines, Iowa	Chow's Gymnastics/UCLA
Kalyxta Gamiao	AA	Sophomore	4-10	Honolulu, Hawaii	Hawaiian Island Twisters
Kiara Gianfagna	AA	Senior	4-10	Brownsburg, Ind.	Jaycie Phelps Athletic Center
Kennedy Hambrick	AA	Graduate	5-3	Houston, Texas	Reflex Gymnastics
Madison Hickey	V, FX	Junior	5-0	Sycamore, Ill.	Energym Gymnastics
Maddie Jones	AA	Sophomore	5-2	Charlotte, N.C.	Southeastern Gymnastics
Emma Kelley	AA	Junior	5-2	Houston, Texas	Fun & Fitness Gymnastics
Bailey Lovett	AA	Graduate	5-2	Greensboro, N.C.	Kristie Phillips Athletic Center
Jaime Pratt	AA	Freshman	5-2	Hanover, Pa.	Hanover Gymnastics
Frankie Price	AA	R-Freshman	5-0	Dallas, Texas	Texas Dreams Gymnastics
Jensen Scalzo	AA	Junior	5-4	Fort Lauderdale, Fla.	American Twisters Gymnastics
Makenzie Sedlacek	AA	Sophomore	5-4	West Chicago, Ill.	Midwest Elite Gymnastics Academy
Leah Smith	AA	Sophomore	5-1	Houston, Texas	World Champions Centre
Cally Swaney	AA	Freshman	5-2	Belmont, N.C.	First in Flight
Cami Weaver	AA	R-Freshman	5-1	Pelham, Ala.	Legacy Gymnastics
Lauren Williams	AA	Freshman	5-3	Rogers, Ark.	Aspire Gymnastics

BY STATE

ALABAMA	
Cami Weaver	Pelham
ARKANSAS	
Lauren Williams	Rogers
CALIFORNIA	
Reese Drotar	Los Gatos
FLORIDA	
Jensen Scalzo	Parkland
HAWAII	
Kalyxta Gamiao	Honolulu
ILLINOIS	
Madison Hickey	Sycamore
Makenzie Sedlacek	West Chicago

INDIANA	
Kiara Gianfagna	Brownsburg

IOWA	
Norah Flatley	Des Moines

NORTH CAROLINA	
Maddie Jones	Charlotte
Bailey Lovett	Greensboro
Cally Swaney	Belmont

PENNSYLVANIA	
Jaime Pratt	Hanover

TEXAS	
Kennedy Hambrick	Houston
Emma Kelley	Houston
Frankie Price	Dallas
Leah Smith	Houston

BY CLASS

FRESHMEN (6)	
Reese Drotar	Freshman
Jaime Pratt	Freshman
Cally Swaney	Freshman
Lauren Williams	Freshman
Frankie Price	R-Freshman
Cami Weaver	R-Freshman

SOPHOMORES (4)	
Kalyxta Gamiao	Sophomore
Maddie Jones	Sophomore
Makenzie Sedlacek	Sophomore
Leah Smith	Sophomore

JUNIORS (2)	
Emma Kelley	Junior
Jensen Scalzo	Junior

SENIORS (5)	
Kiara Gianfagna	Senior
Madison Hickey	Senior
Norah Flatley	Graduate
Kennedy Hambrick	Graduate
Bailey Lovett	Graduate

PRONUNCIATIONS

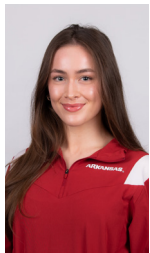
Reese Drotar	DRO-tar
Kalyxta Gamiao	Callista GAH-meow
Kiara Gianfagna	Gee-uh-FON-ya
Bailey Lovett	LOVE-it
Makenzie Sedlacek	said-LA-check
Cally Swaney	SWAY-knee
Jordyn Wieber	WEE-bur

COACHING STAFF

TITLE	NAME	EXPERIENCE	ALMA MATER
Head Coach	Jordyn Wieber	Fourth Season	UCLA, '17
Assistant Coach	Chris Brooks	Fourth Season	Oklahoma, '09
Assistant Coach	Kyla Ross	Second Season	UCLA, '20
VAC/Choreographer	Jackie Terpak	First Season	Temple, '22
Trainer	Kaitlyn Hocutt	First Season	Ohio State, '19
Strength & Conditioning	Whitney Smith	Ninth Season	Arkansas, '10
Director of Operations	Julie Muhlendorf	Fourth Season	Alabama, '11



REESE
DROTAR
AA | FR | 5-8



NORAH
FLATLEY
AA | GR | 5-1



KALYXTA
GAMIAO
AA | SO | 4-10



KIARA
GIANFAGNA
AA | SR | 4-10



KENNEDY
HAMBRICK
AA | GR | 5-3



MADISON
HICKEY
V/FX | SR | 5-0



MADDIE
JONES
AA | SO | 5-2



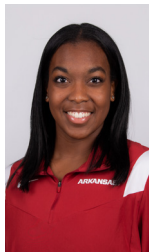
EMMA
KELLEY
AA | JR | 5-2



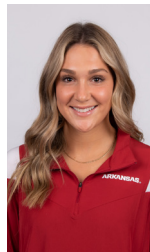
BAILEY
LOVETT
AA | GR | 5-2



JAIME
PRATT
AA | FR | 5-2



FRANKIE
PRICE
AA | R-FR | 5-0



JENSEN
SCALZO
AA | JR | 5-4



MAKENZIE
SEDLACEK
AA | SO | 5-4



LEAH
SMITH
AA | SO | 5-1



CALLY
SWANEY
AA | FR | 5-2



CAMI
WEAVER
AA | R-FR | 5-1



LAUREN
WILLIAMS
AA | FR | 5-3

R2N TOP 25

NO.	TEAM	NQS	AVG.	HIGH
1	Oklahoma	198.205	198.141	198.575
2	Florida	197.845	197.894	198.350
3	Utah	197.805	197.766	198.550
4	Michigan	197.715	197.693	198.300
5	UCLA	197.655	197.553	197.975
6	LSU	197.575	197.386	198.100
7	California	197.535	197.428	197.975
8	Alabama	197.530	197.328	198.000
9	Auburn	197.460	197.347	197.750
10	Denver	197.305	197.228	197.650
11	Oregon State	197.285	197.092	198.075
12	Kentucky	197.275	197.244	197.875
13	Michigan State	196.910	196.850	197.675
14	Missouri	196.890	196.906	197.850
15	Arizona State	196.870	196.716	197.550
16	Ohio State	196.860	196.809	197.575
17	Arkansas	196.815	196.559	197.475
18	Georgia	196.710	196.556	197.325
19	Southern Utah	196.620	196.406	197.125
20	Iowa	196.610	196.541	196.925
21	Stanford	196.585	196.539	197.575
22	Minnesota	196.580	196.481	197.075
23	Washington	196.530	196.269	197.250
24	Illinois	196.490	196.347	196.825
25	Maryland	196.395	196.094	196.875

SEC teams in bold

WXW EVENT RANKINGS

WEEK	TEAM	VT	UB	BB	FX
Preseason	11	--	--	--	--
1/9	16	T21	14	17	T19
1/16	25	T18	T45	T11	T14
1/23	23	T13	T37	T19	T12
1/30	18	13	33	16	7
2/06	16	13	31	15	6
2/13	14	13	T25	13	10
2/20	17	10	12	17	T10
2/27	17	T14	T13	19	16
3/06	--	--	--	--	--
3/13	--	--	--	--	--
3/20	--	--	--	--	--
4/24	--	--	--	--	--

*rankings determined by NQS from 2/20 on

IND. EVENT RANKINGS (TOP 50)

Gymback	AA	VT	UB	BB	FX
Reese Drotar	--	--	--	--	--
Norah Flatley	--	--	T33	T25	--
Kalyxta Gamiao	--	--	--	--	--
Kiara Gianfagna	--	--	--	--	--
Kennedy Hambrick	--	--	--	--	--
Madison Hickey	--	--	--	--	--
Maddie Jones	--	--	--	--	--
Emma Kelley	--	--	--	--	--
Bailey Lovett	--	--	--	--	--
Jaime Pratt	--	--	--	--	--
Frankie Price	--	--	--	--	T40
Jensen Scalzo	--	--	--	--	--
Makenzie Sedlacek	--	--	--	--	--
Leah Smith	--	--	--	--	--
Cally Swaney	--	--	--	--	--
Cami Weaver	--	--	--	--	--
Lauren Williams	--	T45	--	--	T22

NOTEBOOK CONTINUED

Williams Tabbed SEC Freshman Of The Week

After a stellar start to her rookie season and a record-breaking weekend, the Gymbacks' Lauren Williams has been named SEC Freshman of the Week. The honor is the first for Arkansas since 2021, and the team's first Freshman of the Week in nearly five years, the last being Sarah Shaffer on March 20, 2018. The Rogers, Ark. native posted career highs on both vault (9.925) and floor (9.925) in the team's victory over LSU on Jan. 27, the first for the Hogs against the Tigers since 2012 and their first SEC victory since 2021. Williams' scores were both good for podium finishes: a tie for third on vault and tie for second on floor. Williams' 9.925 on floor contributed to a 49.575 event score, the second-highest in program history, and she also helped propel Arkansas to a new program high score of 197.475 in front of the team's first-ever sellout crowd of 7,147, a new Barnhill Arena record. Lauren is currently ranked No. 43 on vault, 12th among SEC competitors and first among SEC freshmen with an average score of 9.856. On floor, she checks in at No. 23, sixth among SEC competitors and first among SEC freshmen with an average score of 9.900. She has yet to score below a 9.800 on vault or below a 9.875 on floor and is currently on a three-meet streak of 9.900 or above on floor. Williams and the No. 18 Gymbacks return to action on Feb. 3 as the team takes on No. 2 Florida from Bud Walton Arena at 6:45 p.m.

Gymbacks Get New Barnhill Attendance, Program Score Records In Sellout

The Gymbacks made the most of their home gym advantage on Jan. 27 as the team made history with a new program high team score, a new Barnhill attendance record, and the team's first sellout. Arkansas defeated LSU 197.475-197.250, the first time since 2012. The Hogs outscored the Tigers on three events en route to the final. It's the second time in head coach Jordyn Wieber's tenure that the Gymbacks have recorded a new program high team score. Norah Flatley and Leah Smith took event titles for Arkansas, on bars (9.925) and floor (9.950), respectively, both Arkansas records for the two. Freshman phenom Lauren Williams again shined, with new career highs of 9.925 on both floor and vault, which placed her in second and third. Freshman Reese Drotar and sophomore Maddie Jones split second on bars (9.875), freshman Cally Swaney and Flatley shared second on beam (9.900) and Jones, Bailey Lovett and Frankie Price all earned a 9.900 for a four-way tie for third on floor to round out Arkansas' podium finishes. The performance came in front of 7,147 fans, the most in Barnhill since Wieber's debut home meet on Jan. 17, 2020.

Hogs Make Big Strides, But Fall To Tigers

Arkansas hit the road for the team's first SEC road dual on Jan. 20, and while the Gymbacks stayed within a tenth of the home team for three rotations, they ultimately finished the day with a 196.675-197.500 loss. The Hogs made significant improvements in the outing and set new season highs on bars (49.225), vault (49.325), floor (49.300), and also earned a new season high mark as a team with 196.675. Redshirt freshman Cami Weaver earned her first beam title at Arkansas with a career high of 9.950, which is also the Hogs' highest score of the season so far. The Gymbacks had seven other podium finishes on the night and placed someone in the top three on every event. Graduate transfer Norah Flatley had another strong showing for the Hogs. She placed second all-around with a 39.550, came in second on bars (9.900) and beam (9.900), and tied for third on floor with another 9.900 mark.

Arkansas Falls To Alabama In Barnhill Debut

Arkansas kicked off its home slate on Jan. 13 and despite a big push in the final two rotations, the Hogs fell to the Crimson Tide, 195.525-196.525. While the team didn't pull out a victory, the Hogs did outscore Alabama on three events: vault (49.150), beam (49.325) and floor (49.350). Graduate transfer Norah Flatley shined in her Barnhill Arena debut, and won the vault and beam titles, along with a share of bars. It was her first all-around appearance as a Gymback, and she placed first with a 39.575. Junior Jensen Scalzo shared the bars top spot with Flatley as both scored 9.900, and for the second consecutive week freshman and Rogers native Lauren Williams took the bars title, with her first 9.900 mark at Arkansas.

Razorbacks Open Season With Dual Victory Over Huskers

The Arkansas gymnastics team kicked its season off on a high note as the Hogs defeated the Huskers 196.225-195.000 in Lincoln on Jan. 7. The Gymbacks outscored the Huskers on vault, bars, and floor, and are now 4-5 all-time against Nebraska. The meet also marked the second straight season-opening win for the Hogs. The team's newcomers and underclassmen were especially impactful in the win. Graduate transfer Norah Flatley took home the bars title with a score of 9.900 and a share of vault, on which she scored a 9.850. Flatley split the vault title with redshirt freshman Cami Weaver. It was Weaver's first appearance on vault since she sustained a season-ending injury in her collegiate debut on the event, making the victory extra special. Redshirt freshman Frankie Price and freshman Lauren Williams both score 9.875 in their Arkansas floor debuts, which earned them a piece of a three-way tie for first place. Each of Arkansas' freshmen appeared on at least one event in the meet in addition to Williams, with Reese Drotar, Jaime Pratt and Cally Swaney all also in the bars lineup.

Gymbacks Add Four On Signing Day

The Razorback gymnastics family and head coach Jordyn Wieber have announced four new additions for the 2024 slate on National Signing Day in Hailey Klein, Priscilla Park, Dakota Essenpries and Chandler Buntin. "We are so thrilled about this recruiting class and for their future with Arkansas Gymnastics. I could not be more excited to welcome them to the Razorback Gymnastics family, not only for their abilities, but because of what I know they will collectively bring to the program as confident and fierce competitors," Wieber said. "Hailey Klein has competed at the elite level and brings an exceptional quality to all events, especially on balance beam. Priscilla Park comes from a club that consistently produces high-level college gymnasts. I have no doubt that she will be the complete package in college, but she will be a fantastic leader as well. We are equally excited about the additions of Dakota Essenpries and Chandler Buntin. Dakota will bring a high level of difficulty on floor and vault and Chandler has an unmatched level of performance and artistry, as well as enthusiasm for our sport!"

TEAM SCORES

DATE	Vault	Bars	Beam	Floor	TOTAL	2-ROT. SCORE	3-ROT. SCORE
01.07	48.950	49.100	49.025	49.150	196.225	98.050	147.075
01.13	49.150	47.700	49.325	49.350	195.525	96.850	146.175
01.20	49.325	49.225	48.825	49.300	196.675	98.550	147.850
01.27	49.300	49.350	49.250	49.575	147.475	98.650	147.900
02.03	49.275	49.300	49.350	49.475	197.400	98.575	147.925
02.11	49.225	49.375	49.325	49.200	197.125	98.425	147.800
02.17	49.525	49.325	47.075	49.475	195.400	98.850	148.325
02.24	49.225	49.275	49.525	48.625	196.650	98.500	148.025
03.05							
03.10							
03.18							

IND. EVENT TITLES

NAME	AA	VT	UB	BB	FX
Reese Drotar	--	--	1	--	--
Norah Flatley	1	2	3	3	--
Kalyxta Gamiao	--	--	--	--	--
Kiara Gianfagna	--	--	--	--	--
Kennedy Hambrick	--	--	--	--	--
Madison Hickey	--	--	--	--	--
Maddie Jones	--	--	1	--	--
Emma Kelley	--	--	--	--	--
Bailey Lovett	--	--	--	--	--
Jaime Pratt	--	--	--	--	--
Frankie Price	--	--	--	--	2
Jensen Scalzo	--	--	1	--	--
Makenzie Sedlacek	--	1	--	--	--
Leah Smith	--	1	--	--	1
Cally Swaney	--	--	--	--	--
Cami Weaver	--	--	--	1	--
Lauren Williams	--	--	--	--	3

INDIVIDUAL LEADERS

DATE	Vault	Bars	Beam	Floor	AA
01.07	Flatley/Weaver, 9.850	Flatley, 9.900	Hambrick/Weaver, 9.825	Price/Williams, 9.875	--
01.13	Flatley, 9.900	Scalzo/Flatley, 9.900	Flatley, 9.900	Williams, 9.900	Flatley, 39.575
01.20	Price, 9.900	Flatley, 9.900	Weaver, 9.950	Williams/Flatley, 9.900	Flatley, 39.550
01.27	Williams, 9.925	Flatley, 9.925	Swaney/Flatley, 9.900	Smith, 9.925	--
02.03	Price, 9.900	Scalzo, 9.900	Swaney, 9.925	Price, 9.925	Flatley, 38.500
02.11	Price/Smith, 9.875	Drotar, 9.925	Flatley, 9.900	Hickey, 9.925	--
02.17	Smith/Sedlacek, 9.950	Drotar/Jones, 9.950	Flatley, 9.900	Price, 9.975	--
02.24	Williams, 9.900	Drotar/Flatley, 9.900	Flatley, 9.975	Hickey/Price, 9.925	--
03.05					
03.10					
03.18					

2023 AWARDS

NAME	AWARD
Lauren Williams	SEC Freshman of the Week (1/31)

GYMBACK MAJORS

NAME	AWARD
Reese Drotar	Communication
Norah Flatley	Operations Management (Masters)
Kalyxta Gamiao	Multimedia Storytelling & Production
Kiara Gianfagna	Psychology
Kennedy Hambrick	Operations Management (Masters)
Madison Hickey	Animal Science
Maddie Jones	Organizational Leadership Marketing
Emma Kelley	Hospitality Management
Bailey Lovett	UA School of Law: First Year
Jaime Pratt	Communication
Frankie Price	Communication
Jensen Scalzo	Communication
Makenzie Sedlacek	Advertising & Public Relations
Leah Smith	Advertising & Public Relations
Cally Swaney	Sport Management
Cami Weaver	Public Health
Lauren Williams	Communication

THE LAST TIME ARKANSAS

Scored a 196 or higher at home	196.650 vs. No. 14 Missouri (2/24/23)
Scored a 196 or higher on the road	196.675 at No. 7 Auburn (1/20/23)
Scored a 197 or higher at home	197.475 vs. No. 8 LSU (1/27/23)
Scored a 197 or higher on the road	197.125 at Metroplex Challenge (2/11/23)
Scored a 198 or higher	Never
Won a home meet	vs. No. 8 LSU (1/27/23)
Won a road meet	at Nebraska (1/7/23)
Won a neutral site meet	NCAA Fayetteville Regional (4/10/09)
Lost a home meet	vs. No. 14 Missouri (2/24/23)
Lost a road meet	at No. 11 Kentucky (2/17/23)
Lost a neutral site meet	4th of 4, Norman Regional Final (4/2/22)
Won a conference meet	vs. No. 8 LSU (1/27/23)
Won a home conference meet	vs. No. 8 LSU (1/27/23)
Won a road conference meet	at No. 12 Auburn (3/5/21)
Lost a home conference meet	vs. No. 14 Missouri (2/24/23)
Lost a road conference meet	at No. 11 Kentucky (2/17/23)
Won the All-Around title at home	Norah Flatley, 39.575 vs. No. 8 Alabama (1/13/23)
Won the All-Around title on the road	Kennedy Hambrick, 39.700 at No. 12 Auburn (3/5/21)
Won the Vault title at home	Norah Flatley, 9.900 vs. No. 8 Alabama (1/13/23)
Won the Vault title on the road	Leah Smith & Makenzie Sedlacek, 9.950 at No. 11 Kentucky (2/17/23)
Won the Bars title at home	Norah Flatley, 9.925 vs. No. 8 LSU (1/27/23)
Won the Bars title on the road	Maddie Jones & Reese Drotar, 9.950 at No. 11 Kentucky (2/17/23)
Won the Beam title at home	Norah Flatley, 9.975 vs. No. 14 Missouri (2/24/23)
Won the Beam title on the road	Cami Weaver, 9.950 at No. 7 Auburn (1/20/23)
Won the Floor title at home	Leah Smith, 9.950 vs. No. 8 LSU (1/27/23)
Won the Floor title on the road	Frankie Price, 9.975 at No. 11 Kentucky (2/17/23)
Had an All-American	Kennedy Hambrick, 2022 (17th, AA)
Had an NCAA Individual appearance	Kennedy Hambrick, Sarah Shaffer (2022)

THE SERIES

>> Sunday's competition will be the 47th meeting between the Hogs and the Bulldogs all-time. Georgia holds the series advantage at 37-8-1

>> The two teams have competed outside of Fayetteville or Athens in the regular season just twice before, and only dating back to 2019. The series is even at 1-1 in those outings

>> The Gymbucks outrank the Bulldogs on all events except bars, in which only half a tenth separates the two teams. Arkansas is ahead of Georgia by just a tenth on beam, which the Hogs checking in at a 49.170 NQS and the Bulldogs at 49.160

GEORGIA (8-37-1)

DATE	W/L	SCORE	LOCATION
2/21/03	L	194.225-197.225	Fayetteville, Ark.
3/29/03	L	194.850-197.525	Birmingham, Ala. (SEC)
1/30/04	L	195.250-197.300	Athens, Ga.
3/20/04	L	194.825-198.175	Duluth, Ga. (SEC)
1/28/05	L	195.150-195.300	Fayetteville, Ark.
3/26/05	L	195.325-197.250	Duluth, Ga. (SEC)
1/20/06	L	193.600-196.125	Athens, Ga.
3/25/06	L	194.650-197.275	Birmingham, Ala. (SEC)
4/20/06	L	194.375-197.275	Corvallis, Ore. (NCAA S. II)
1/19/07	L	196.075-196.100	Fayetteville, Ark.
3/31/07	L	194.550-197.175	Little Rock (SEC)
3/1/08	L	195.950-197.900	Athens, Ga.
3/29/08	L	194.650-197.350	Duluth, Ga. (SEC)
2/20/09	L	196.725-196.925	Fayetteville, Ark.
3/21/09	L	195.650-196.925	Nashville, Tenn. (SEC)
4/17/09	L	196.475-197.825	Lincoln, Neb. (Super Six)
2/12/10	L	195.875-196.725	Athens, Ga.
3/26/10	L	195.275-196.825	Jacksonville, Fla. (SEC)
2/4/11	W	195.775-195.400	Fayetteville, Ark.
3/19/11	L	195.800-196.625	Birmingham, Ala. (SEC)
4/15/11	T	195.450-195.450	Cleveland, Ohio (NCAA S. II)
2/10/12	L	195.875-196.825	Athens, Ga.
3/24/12	L	194.175-196.575	Duluth, Ga. (SEC)
4/20/12	W	197.150-196.500	Duluth, Ga. (NCAA S. II)
1/11/13	L	195.775-196.200	Fayetteville, Ark.
3/23/13	L	196.400-197.325	Little Rock (SEC)
4/6/13	L	196.950-197.425	Corvallis Regional
3/1/14	L	195.675-197.650	Athens, Ga.
3/22/14	L	194.900-197.150	Birmingham, Ala. (SEC)
3/7/15	L	196.650-196.775	Athens, Ga.
3/21/15	L	195.950-196.000	Duluth, Ga. (SEC)
1/15/16	L	196.700-196.775	Fayetteville, Ark.
3/19/16	L	196.500-196.850	Little Rock (SEC)
1/20/17	L	196.335-195.025	Athens, Ga.
3/18/17	L	196.700-194.900	Jacksonville, Fla. (SEC)
1/26/18	W	197.175-196.125	Fayetteville, Ark.
3/24/18	W	196.425-196.350	St. Louis (SEC)
4/20/18	L	196.425-196.6875	St. Louis (NCAA S. I)
2/1/19	L	197.475-196.125	Athens, Ga.
3/8/19	L	197.350-197.000	Birmingham, Ala.
3/23/19	L	197.000-196.475	New Orleans, La. (SEC)
2/7/20	W	196.950-196.750	Fayetteville, Ark.
1/29/21	W	196.875-195.950	Athens, Ga.

2/25/22	L	196.975-196.100	Fayetteville, Ark.
3/6/22	W	196.800-196.200	Huntsville, Ala.
3/19/22	W	196.450-195.800	Birmingham, Ala. (SEC)

SEC STANDINGS

TEAM	SEC	PCT	HOME	AWAY	OVERALL	PCT	HOME	AWAY	NEUTRAL	AVG.	HIGH
Florida	6-1	.857	4-0	2-1	9-1	.900	7-0	2-1	0-0	197.894	198.350
Kentucky	4-2	.667	3-0	1-2	7-3	.700	4-0	1-3	2-0	197.244	197.875
Alabama	4-3	.571	1-2	2-1	6-4	.600	2-2	2-1	2-1	197.328	198.000
LSU	4-3	.571	3-0	1-3	4-5	.444	3-1	1-4	0-0	197.386	198.100
Missouri	3-3	.500	2-1	1-2	6-3	.667	2-1	3-2	1-0	196.906	197.850
Auburn	3-3	.500	3-0	0-3	5-5	.500	4-0	0-3	1-2	197.347	197.750
Georgia	1-5	.167	1-1	0-4	6-9	.400	3-2	0-4	3-3	196.556	197.325
Arkansas	1-5	.167	1-3	0-2	3-7	.300	1-3	1-2	1-2	196.559	197.475

LINEUPS AND SCORES BY MEET

VAULT

DATE	1	2	3	4	5	6	TEAM
01.07	Kelley, 9.725	Weaver, 9.850	Flatley, 9.850	Price, 9.675	Smith, 9.725	Williams, 9.800	48.950
01.13	Kelley, 9.750	Weaver, 9.825	Flatley, 9.900	Price, 9.775	Sedlacek, 9.825	Williams, 9.825	49.150
01.20	Weaver, 9.850	Flatley, 9.850	Price, 9.900	Smith, 9.850	Sedlacek, 9.525	Williams, 9.875	49.325
01.27	Weaver, 9.875	Flatley, 9.850	Price, 9.850	Smith, 9.775	Sedlacek, 9.800	Williams, 9.925	49.300
02.03	Weaver, 9.875	Flatley, 9.800	Smith, 9.825	Price, 9.900	Sedlacek, 9.825	Williams, 9.850	49.275
02.11	Weaver, 9.700	Flatley, 9.800	Smith, 9.875	Price, 9.875	Sedlacek, 9.850	Williams, 9.825	49.225
02.17	Weaver, 9.900	Flatley, 9.850	Smith, 9.950	Price, 9.825	Sedlacek, 9.950	Williams, 9.875	49.525
02.24	Weaver, 9.800	Flatley, 9.850	Smith, 9.800	Price, 9.775	Sedlacek, 9.875	Williams, 9.900	49.225
03.05							
03.10							
03.18							

BARS

DATE	1	2	3	4	5	6	TEAM
01.07	Swaney, 9.775	Drotar, 9.800	Scalzo, 9.850	Pratt, 9.775	Hambrick, 8.600	Flatley, 9.900	49.100
01.13	Swaney, 8.925	Drotar, 8.975	Scalzo, 9.900	Pratt, 9.825	Hambrick, 9.100	Flatley, 9.900	47.700
01.20	Swaney, 9.825	Scalzo, 9.825	Drotar, 9.800	Jones, 9.850	Pratt, 9.825	Flatley, 9.900	49.225
01.27	Swaney, 9.825	Scalzo, 9.825	Drotar, 9.875	Jones, 9.875	Pratt, 9.850	Flatley, 9.925	49.350
02.03	Swaney, 9.850	Scalzo, 9.900	Drotar, 9.850	Jones, 9.850	Pratt, 9.825	Flatley, 9.850	49.300
02.11	Swaney, 9.825	Scalzo, 9.900	Drotar, 9.925	Jones, 9.900	Pratt, 9.800	Flatley, 9.825	49.375
02.17	Swaney, 9.675	Scalzo, 9.800	Drotar, 9.950	Jones, 9.950	Pratt, 9.750	Flatley, 9.875	49.325
02.24	Swaney, 9.825	Scalzo, 9.825	Drotar, 9.900	Jones, 9.825	Pratt, 9.825	Flatley, 9.900	49.275
03.05							
03.10							
03.18							

BEAM

DATE	1	2	3	4	5	6	TEAM
01.07	Gamiao, 9.775	Williams, 9.675	Lovett, 9.800	Hambrick, 9.825	Weaver, 9.825	Flatley, 9.800	49.025
01.13	Gamiao, 9.850	Lovett, 9.825	Swaney, 9.875	Hambrick, 9.725	Weaver, 9.875	Flatley, 9.900	49.325
01.20	Gamiao, 9.875	Lovett, 9.650	Swaney, 9.450	Hambrick, 9.275	Weaver, 9.950	Flatley, 9.900	48.825
01.27	Gamiao, 9.875	Gianfagna, 9.850	Swaney, 9.900	Hambrick, 9.725	Weaver, 9.625	Flatley, 9.900	49.250
02.03	Gamiao, 9.850	Gianfagna, 9.900	Swaney, 9.925	Weaver, 9.875	Hambrick, 9.800	Flatley, 9.050	49.350
02.11	Gamiao, 9.875	Gianfagna, 9.825	Swaney, 9.850	Weaver, 9.875	Hambrick, 9.750	Flatley, 9.900	49.325
02.17	Gamiao, 9.850	Lovett, 9.125	Gianfagna, 9.200	Swaney, 9.000	Weaver, 9.000	Flatley, 9.900	47.075
02.24	Gamiao, 9.925	Gianfagna, 9.900	Swaney, 9.875	Weaver, 9.125	Hambrick, 9.850	Flatley, 9.975	49.525
03.05							
03.10							
03.18							

FLOOR

DATE	1	2	3	4	5	6	TEAM
01.07	Hickey, 9.725	Jones, 9.775	Gamiao, 9.775	Williams, 9.875	Smith, 9.850	Price, 9.875	49.150
01.13	Jones, 9.850	Hickey, 9.850	Lovett, 9.875	Williams, 9.900	Flatley, 9.875	Price, 9.725	49.350
01.20	Jones, 9.800	Hickey, 9.825	Lovett, 9.750	Williams, 9.900	Flatley, 9.900	Price, 9.875	49.300
01.27	Jones, 9.900	Hickey, 9.750	Lovett, 9.900	Smith, 9.950	Williams, 9.925	Price, 9.900	49.575
02.03	Jones, 9.900	Lovett, 9.825	Smith, 9.875	Williams, 9.950	Flatley, 9.800	Price, 9.925	49.475
02.11	Jones, 9.775	Hickey, 9.925	Lovett, 9.875	Smith, 9.875	Williams, 9.600	Price, 9.750	49.200
02.17	Jones, 9.850	Hickey, 9.800	Lovett, 9.900	Smith, 9.775	Williams, 9.950	Price, 9.975	49.475
02.24	Jones, 9.900	Hickey, 9.925	Lovett, 9.050	Flatley, 9.125	Williams, 9.750	Price, 9.925	48.625
03.05							
03.10							
03.18							

TOP SCORES BY CLASS

FRESHMAN

VAULT	GYMNAST	SCORE	DATE	OPPONENT
	Michelle Stout	9.950	2/9/07	No. 1 Florida

UNEVEN BARS

GYMNAST	SCORE	DATE	OPPONENT
Reese Drotar	9.950	2/17/23	At No. 11 Kentucky
Paige Zaziski	9.950	3/13/15	No. 8 UCLA

BALANCE BEAM

GYMNAST	SCORE	DATE	OPPONENT
Sophia Carter	9.975	1/26/18	No. 10 Georgia
Sophia Carter	9.975	3/2/18	No. 36 Arizona

FLOOR EXERCISE

GYMNAST	SCORE	DATE	OPPONENT
Lauren Williams	9.950	2/17/23	At No. 11 Kentucky
Lauren Williams	9.950	2/3/23	No. 2 Florida
Bailey Lovett	9.950	1/17/20	No. 3 Denver
Sarah Shaffer	9.950	3/16/18	Arkansas Tri Meet
Sophia Carter	9.950	1/26/18	No. 10 Georgia
Rachel Barnett	9.950	2/6/04	No. 14 LSU
Rachel Barnett	9.950	1/23/04	No. 22 Auburn

ALL-AROUND

GYMNAST	SCORE	DATE	OPPONENT
Sarah Shaffer	39.500	3/16/18	Arkansas Tri Meet

SOPHOMORE/R-FRESHMAN

VAULT	GYMNAST	SCORE	DATE	OPPONENT
	Leah Smith*	9.950	2/17/23	At No. 11 Kentucky
	Makenzie Sedlacek	9.950	2/17/23	At No. 11 Kentucky
	Amanda Wellick	9.950	2/13/15	No. 6 Alabama
	Amanda Wellick	9.950	1/16/15	Arkansas Tri Meet
	Katherine Grable	9.950	1/20/12	No. 25 LSU
	Jaime Pisani	9.950	3/6/10	No. 22 Minnesota
	Jaime Pisani	9.950	2/5/10	No. 16 Auburn

UNEVEN BARS

GYMNAST	SCORE	DATE	OPPONENT
Hailey Garner	9.975	3/16/18	Arkansas Tri Meet

BALANCE BEAM

GYMNAST	SCORE	DATE	OPPONENT
Cami Weaver	9.950	1/20/23	At No. 7 Auburn
Bailey Lovett	9.950	3/5/21	At No. 12 Auburn
Michaela Burton	9.950	1/26/18	No. 10 Georgia
Jessica Yamzon	9.950	1/26/18	No. 10 Georgia
Katherine Grable	9.950	4/21/12	NCAA Championships
Katie Hardman	9.950	3/12/04	At No. 11 Arizona

FLOOR EXERCISE

GYMNAST	SCORE	DATE	OPPONENT
Frankie Price	9.975	2/17/23	At No. 11 Kentucky

ALL-AROUND

GYMNAST	SCORE	DATE	OPPONENT
Katherine Grable	39.725	1/20/12	No. 25 LSU

*denotes a perfect score of 9.950 for Yurchenko full

JUNIOR

VAULT	GYMNAST	SCORE	DATE	OPPONENT
	Kennedy Hambrick	9.975	2/19/21	No. 25 Missouri
	Michelle Stout	9.975	4/16/09	NCAA Championships

UNEVEN BARS

GYMNAST	SCORE	DATE	OPPONENT
Kennedy Hambrick	9.950	4/3/21	Tuscaloosa Regional Final

BALANCE BEAM

GYMNAST	SCORE	DATE	OPPONENT
Kennedy Hambrick	9.950	2/26/21	No. 7 Alabama
Kennedy Hambrick	9.950	2/19/21	No. 25 Missouri
Michaela Burton	9.950	2/15/19	No. 11 Auburn

FLOOR EXERCISE

GYMNAST	SCORE	DATE	OPPONENT
Kennedy Hambrick	9.950	2/19/21	No. 25 Missouri
Kennedy Hambrick	9.950	2/12/21	At No. 15 Kentucky
Sophia Carter	9.950	2/28/20	At No. 5 LSU
Sophia Carter	9.950	1/17/20	No. 3 Denver
Amanda Wellick	9.950	2/26/16	No. 23 Kentucky
Katherine Grable	9.950	4/19/13	NCAA Championships
Katherine Grable	9.950	4/6/13	Corvallis Regional
Katherine Grable	9.950	3/1/13	Mizzou Quad
Katherine Grable	9.950	2/1/13	No. 1 Florida
Jaime Pisani	9.950	4/15/11	NCAA Championships
Jaime Pisani	9.950	4/2/11	Denver Regional
Jaime Pisani	9.950	3/4/11	No. 27 West Virginia
Jaime Pisani	9.950	2/27/11	At Illinois-Chicago

ALL-AROUND

GYMNAST	SCORE	DATE	OPPONENT
Kennedy Hambrick	39.750	2/19/21	No. 25 Missouri

SENIOR/GRADUATE

VAULT	GYMNAST	SCORE	DATE	OPPONENT
	Katherine Grable	9.975	4/20/14	NCAA Event Finals

UNEVEN BARS

GYMNAST	SCORE	DATE	OPPONENT
Sarah Shaffer	9.950	3/31/22	Norman Regional
Sarah Shaffer	9.950	3/6/22	Elevate The Stage
Maggie O'Hara	9.950	1/14/22	No. 8 Auburn
Maggie O'Hara	9.950	2/26/21	No. 7 Alabama
Maggie O'Hara	9.950	1/15/21	No. 5 LSU
Braie Speed	9.950	3/16/18	Arkansas Tri Meet
Jaime Pisani	9.950	1/20/12	No. 25 LSU

BALANCE BEAM

GYMNAST	SCORE	DATE	OPPONENT
Norah Flatley	9.975	2/24/23	No. 14 Missouri
Kennedy Hambrick	9.975	2/6/22	No. 58 SEMO

FLOOR EXERCISE

GYMNAST	SCORE	DATE	OPPONENT
Katherine Grable	9.975	3/14/14	No. 2 Oklahoma
Jaime Pisani	9.975	2/3/12	No. 13 Auburn

ALL-AROUND

GYMNAST	SCORE	DATE	OPPONENT
Katherine Grable	39.725	2/21/14	No. 31 Kentucky
Jaime Pisani	39.725	2/2/12	No. 13 Auburn

INDIVIDUAL RECORDS

VAULT

SCORE	GYMNAST	DATE (LAST)	OPPONENT
9.975	Kennedy Hambrick	2/19/21	No. 25 Missouri
	Katherine Grable	4/20/14	NCAA Event Finals
	Michelle Stout	4/16/09	NCAA Champ.
9.950	Leah Smith*	2/17/23	at No. 11 Kentucky
	Makenzie Sedlacek	2/17/23	at No. 11 Kentucky
	Kennedy Hambrick	3/5/21	at No. 12 Auburn
	Amanda Wellick (2x)	2/13/15	Arkansas Tri-Meet
	Heather Elswick	1/16/15	No. 6 Alabama
	Katherine Grable (7x)	4/18/14	NCAA Ev. Semifinals
	Jaime Pisani (3x)	3/16/12	at No. 16 Missouri
	Casey Jo Magee (2x)	3/1/10	No. 2 Oklahoma
	Michelle Stout	2/9/07	No. 1 Florida
9.925	Lauren Williams	1/27/23	No. 8 LSU
	Amanda Elswick	3/13/22	Denver Quad
	Kennedy Hambrick (3x)	3/13/22	Denver Quad
	Savannah Pennese	3/13/22	Denver Quad
	Sarah Shaffer (2x)	3/13/22	Denver Quad
	Braie Speed	2/23/18	at No. 5 Florida

8 additional scores of 9.925 occurred before 2018
*denotes a perfect score of 9.950 for Yurchenko full

BALANCE BEAM

SCORE	GYMNAST	DATE (LAST)	OPPONENT
9.975	Norah Flatley	2/24/23	No. 14 Missouri
	Kennedy Hambrick	2/6/22	No. 58 SEMO
	Sophia Carter (2x)	3/2/18	No. 36 Arizona
9.950	Cami Weaver	1/20/23	at No. 7 Auburn
	Amanda Elswick (2x)	3/4/22	at No. 7 Alabama
	Kennedy Hambrick (3x)	1/14/22	No. 8 Auburn
	Bailey Lovett	3/5/21	at No. 12 Auburn
	Micaela Burton (2x)	2/5/19	at No. 11 Auburn
	Jessica Yamzon	1/26/18	No. 11 Georgia
	Katherine Grable	4/20/12	NCAA Champ. Sess II
	Jaime Pisani (2x)	4/20/12	NCAA Champ. Sess II
	Casey Jo Magee (3x)	3/19/10	No. 2 Oklahoma
	Katie Hardman	3/12/04	at No. 11 Arizona
9.925	Kalyxta Gamiao	2/24/23	No. 14 Missouri
	Cally Swaney	2/3/23	No. 2 Florida
	Amanda Elswick (2x)	2/20/22	at No. 10 Mizzou w/LSU
	Kennedy Hambrick (6x)	1/28/22	at No. 4 Florida
	Bailey Lovett (2x)	1/28/22	at No. 4 Florida
	Maggie O'Hara (2x)	1/22/21	No. 1 Florida
	Sophia Carter (2x)	2/7/20	No. 10 Georgia
	Hailey Garner (2x)	3/24/18	SEC Championships
	Katherine Grable (7x)	3/14/14	No. 2 Oklahoma
	Jaime Pisani (2x)	4/7/12	NCAA Regional
	Casey Jo Magee (6x)	2/26/10	at No. 23 Washington
	Dana McQuillin	3/5/04	GymBack Invite
9.9125	Kennedy Hambrick	4/16/21	NCAA Championships

ALL-AROUND

SCORE	GYMNAST	DATE (LAST)	OPPONENT
39.750	Kennedy Hambrick	2/19/21	No. 25 Missouri
39.725	Katherine Grable (2x)	2/22/14	No. 31 Kentucky
	Jaime Pisani	2/3/12	No. 13 Auburn
39.700	Kennedy Hambrick	3/5/21	at No. 12 Auburn
39.675	Katherine Grable	4/5/14	Fayetteville Regional
	Jaime Pisani	3/2/12	No. 18 Minnesota
	Casey Jo Magee	3/19/10	No. 2 Oklahoma
39.650	Katherine Grable	4/6/13	NCAA Regional
	Casey Jo Magee	3/19/10	No. 2 Oklahoma
39.625	Katherine Grable (3x)	3/14/14	No. 2 Oklahoma
	Jaime Pisani (2x)	4/20/12	NCAA Champ. Session II
	Casey Jo Magee (2x)	3/12/10	No. 40 Pittsburgh
39.6125	Kennedy Hambrick	4/16/21	NCAA Championships
39.600	Kennedy Hambrick	2/7/20	No. 10 Georgia
	Amanda Wellick	2/26/16	No. 23 Kentucky
	Katherine Grable	3/1/14	at No. 6 Georgia
	Jaime Pisani (3x)	3/16/12	at No. 16 Missouri
	Casey Jo Magee	4/10/10	NCAA Champ. Session II
39.575	Norah Flatley	1/13/23	No. 8 Alabama
	Kennedy Hambrick	3/31/22	Norman Regional
	Jaime Pisani	1/10/12	No. 25 LSU
39.550	Norah Flatley	1/20/23	at No. 7 Auburn
	Kennedy Hambrick	4/2/21	Tuscaloosa Regional
	Katherine Grable (2x)	2/5/12	No. 5 Oklahoma
	Casey Jo Magee	4/22/10	NCAA Champ. Session II
39.525	Kennedy Hambrick	1/14/22	No. 8 Auburn
	Sarah Shaffer	1/15/21	No. 5 LSU
	Jaime Pisani (4x)	1/3/12	No. 23 Kentucky
	Casey Jo Magee (3x)	2/19/10	No. 11 LSU
	Michelle Stout	3/13/09	at TWU Quad Meet

UNEVEN BARS

SCORE	GYMNAST	DATE (LAST)	OPPONENT
9.975	Hailey Garner	3/16/18	Arkansas Tri
9.950	Reese Drotar	2/17/23	at No. 11 Kentucky
	Maddie Jones	2/17/23	at No. 11 Kentucky
	Sarah Shaffer (2x)	3/31/22	Norman Regional
	Maggie O'Hara (3x)	1/14/22	No. 8 Auburn
	Kennedy Hambrick (2x)	4/3/21	Tuscaloosa Regional Final
	Braie Speed (2x)	3/16/18	Arkansas Tri
	Emily Peacock	2/24/06	No. 18 Kentucky
	Jaime Pisani	1/20/12	No. 25 LSU
	Paige Zaziski	3/13/15	No. 8 UCLA
9.925	Reese Drotar	2/11/23	Metroplex Challenge
	Norah Flatley	1/27/23	No. 8 LSU
	Kennedy Hambrick (3x)	3/6/22	Elevate the Stage
	Maddie Jones	2/20/22	at No. 10 Mizzou w/LSU
	Sarah Shaffer (2x)	2/6/22	No. 58 SEMO
	Jensen Scalzo (2x)	1/14/22	No. 8 Auburn
	Maggie O'Hara (2x)	4/16/21	NCAA Championships
	Hailey Garner (3x)	3/16/19	Arkansas Quad
	Michaela Burton	3/8/19	Elevate The Stage
	Sydney Laird	3/2/18	vs. Arizona

9 additional scores of 9.925 occurred before 2018

FLOOR EXERCISE

SCORE	GYMNAST	DATE (LAST)	OPPONENT
9.975	Frankie Price	2/17/23	at No. 11 Kentucky
	Katherine Grable	3/14/14	No. 2 Oklahoma
	Jaime Pisani	2/3/12	No. 13 Auburn
9.9625	Katherine Grable	4/20/14	NCAA Event Finals
9.950	Lauren Williams (2x)	2/17/23	No. 11 Kentucky
	Leah Smith	1/27/23	No. 8 LSU
	Kennedy Hambrick (3x)	2/6/22	No. 58 SEMO
	Sophia Carter (9x)	3/20/21	SEC Championships
	Bailey Lovett (3x)	3/5/21	at No. 12 Auburn
	Sarah Shaffer	3/16/18	Arkansas Tri
	Amanda Wellick (2x)	2/26/16	No. 23 Kentucky
	Katherine Grable (13x)	4/18/14	NCAA Ev. Semifinals
	Jaime Pisani (11x)	3/16/12	at No. 16 Missouri
	Casey Jo Magee	3/12/10	No. 40 Pittsburgh
	Rachel Barnett (2x)	2/6/04	No. 14 LSU
9.925	Madison Hickey (2x)	2/24/23	No. 14 Missouri
	Frankie Price (2x)	2/24/23	No. 14 Missouri
	Lauren Williams	1/27/23	No. 8 LSU
	Sophia Carter (9x)	4/2/21	Tuscaloosa Regional
	Kennedy Hambrick (3x)	2/25/22	No. 26 Georgia
	Bailey Lovett (4x)	4/2/22	Norman Regional Final
	Abby Johnston	2/26/21	No. 7 Alabama
	Sarah Shaffer (4x)	2/26/21	No. 7 Alabama
	Sydney McGlone (2x)	3/16/19	Arkansas Quad
	Samantha Nelson (2x)	1/29/16	No. 9 Auburn

11 additional scores of 9.925 occurred before 2016



TEAM RECORDS

VAULT

SCORE	DATE	OPPONENT
1. 49.525	2/17/23	at No. 11 Kentucky
2. 49.500	3/13/22	Denver Quad
3. 49.450	1/31/14	No. 12 Auburn
	4/21/12	at NCAA Super Six
	4/16/09	at NCAA Championship
	2/20/09	No. 3 Georgia
7. 49.425	2/6/15	No. 2 Florida
	2/22/13	No. 4 Alabama
9. 49.400	2/17/12	at No. 6 Alabama
	1/20/12	No. 25 LSU

UNEVEN BARS

SCORE	DATE	OPPONENT
1. 49.575	3/2/18	Arizona
2. 49.550	1/14/22	No. 8 Auburn
	3/16/18	Arkansas Tri
	2/26/16	No. 23 Kentucky
5. 49.500	3/6/22	Elevate the Stage
6. 49.450	3/31/22	Norman Regional
	2/9/18	Auburn
	1/20/12	No. 25 LSU
9. 49.425	3/5/21	at No. 12 Auburn
	2/7/20	No. 10 Georgia

BALANCE BEAM

SCORE	DATE	OPPONENT
1. 49.525	2/24/23	No. 14 Missouri
2. 49.475	1/28/22	at No. 4 Florida
3. 49.450	4/20/12	NCAA Super Six
4. 49.425	1/26/18	No. 11 Georgia
5. 49.400	2/19/21	No. 25 Missouri
	3/2/18	vs. Arizona
	3/16/07	at No. 23 Arizona St
8. 49.375	3/12/04	No. 11 Arizona
9. 49.350	2/3/23	No. 2 Florida
	1/22/21	No. 1 Florida
	3/16/18	Arkansas Tri
	2/5/10	No. 16 Auburn

FLOOR EXERCISE

SCORE	DATE	OPPONENT
1. 49.600	1/16/15	No. 6 Alabama
2. 49.575	1/27/23	No. 8 LSU
	2/26/21	No. 7 Alabama
	2/19/21	No. 25 Missouri
5. 49.550	2/6/22	No. 58 SEMO
6. 49.525	1/24/20	No. 13 Kentucky
	3/5/04	GymBack Invite
8. 49.500	1/15/21	No. 5 LSU
9. 49.475	2/17/23	at No. 11 Kentucky
	2/3/23	No. 2 Florida
	1/26/18	No. 11 Georgia

TEAM TOTAL

SCORE	DATE	OPPONENT
1. 197.475	1/27/23	No. 8 LSU
2. 197.425	3/5/21	at No. 12 Auburn
3. 197.400	2/3/23	No. 2 Florida
4. 197.350	2/19/21	No. 25 Missouri
5. 197.300	3/16/18	Arkansas Tri
6. 197.275	3/2/18	Arizona
7. 197.250	4/2/21	NCAA Regionals
	1/22/21	No. 1 Florida
9. 197.225	2/26/16	No. 23 Kentucky
	1/20/12	No. 25 LSU



BARNHILL ARENA

Barnhill Arena officially closed its doors as a basketball facility on March 3, 1993. Barnhill was reconfigured into the largest volleyball-only arena in time for the 1994 season. It then underwent a second significant face-lift prior to the 2003 season to also become the home of Arkansas gymnastics.

FIRST OPENED	1954
FIRST USED FOR GYM	2003
GYM CAPACITY	7,147
ALL-TIME RECORD	77-60-2 (21 seasons)
FIRST MEET DATE	January 10, 2003
FIRST RESULT	L, 193.000-196.425
FIRST OPPONENT	No. 16 Denver
LARGEST CROWD	7,147, Jan. 27, 2023
CROWD OPPONENT	No. 8 LSU
ORIGINAL NAME	Arkansas Fieldhouse



ATTENDANCE HISTORY

RECORD AT THE BARN

YEAR	AVG. ATTENDANCE (Rank)	YEAR	HOME RECORD (Barnhill Arena)
2003.....	4,739 (4th)	2003.....	0-5
2004.....	4,401 (4th)	2004.....	8-3
2005.....	3,413 (6th)	2005.....	1-5
2006.....	2,474 (11th)	2006.....	3-2
2007.....	2,318 (12th)	2007.....	6-3
2008.....	2,190 (15th)	2008.....	3-2
2009.....	2,587 (10th)	2009.....	4-1
2010.....	2,505 (11th)	2010.....	4-1-1
2011.....	2,384 (11th)	2011.....	4-1
2012.....	3,081 (8th)	2012.....	4-2
2013.....	3,440 (10th)	2013.....	4-3-1
2014.....	3,235 (9th)	2014.....	3-3
2015.....	2,930 (11th)	2015.....	5-4
2016.....	3,427 (9th)	2016.....	3-2
2017.....	3,797 (9th)	2017.....	3-3
2018.....	3,876 (9th)	2018.....	5-1
2019.....	3,057 (16th)	2019.....	3-4
2020.....	5,415 (9th)	2020.....	1-3
2021.....	1,241 (6th)*	2021.....	1-3
2022.....	4,966 (7th)**	2022.....	2-2
2023.....	7,100**	2023.....	1-2



*2021 attendance data skewed due to COVID-19 protocols including limited capacity

**includes meets at Bud Walton Arena

BARNHILL ARENA RECORDS

TEAM VAULT

TEAM BARS

TEAM BEAM

TEAM FLOOR

OPPONENT	DATE	SCORE	OPPONENT	DATE	SCORE	OPPONENT	DATE	SCORE	OPPONENT	DATE	SCORE
1. #9 Alabama	1/14/11	49.500	1. Arizona	3/2/18	49.575	1. #14 Missouri	2/24/23	49.525	1. #6 Alabama	1/16/15	49.600
2. #12 Auburn	1/31/14	49.450	2. Arkansas Tri	3/16/18	49.550	2. #11 Georgia	1/26/18	49.425	2. #8 LSU	1/27/23	49.575
			#23 Kentucky	2/26/16		3. #25 Missouri	2/19/21	49.400	#7 Alabama	2/26/21	
4. #2 Florida	2/6/15	49.425	4. #15 Auburn	2/9/18	49.450	Arizona	3/2/18		#25 Missouri	2/19/21	
#4 Alabama	2/22/13		#25 LSU	1/20/12		5. #1 Florida	1/22/21	49.350	5. #58 SEMO	2/6/22	49.550
6. #25 LSU	1/20/12	49.400	6. #10 Georgia	2/7/20	49.425	Arkansas Tri	3/16/18		6. GymBack Inv.	3/5/04	49.525
7. #6 Alabama	1/16/15	49.375	7. #1 Florida	1/22/21	49.375	#16 Auburn	2/5/10		#13 Kentucky	1/24/20	
#9 Nebraska	2/24/12		NCAA Regional	4/5/14		8. #8 Alabama	1/13/23	49.325	8. #5 LSU	1/15/21	49.500
9. #25 Missouri	2/19/21	49.350	#18 Minnesota	3/2/12		#26 Georgia	2/25/22		9. #11 Georgia	1/26/18	49.475
#18 Minnesota	3/6/09		10. # LSU	1/27/23	49.350	#5 LSU	1/15/21		10. Kentucky	2/21/14	49.450
			#3 Denver	1/17/20		Utah State	3/11/16				
			#13 Auburn	2/3/12		#23 Kentucky	2/26/16				

TEAM HOME HIGH SCORES

INDIVIDUAL HOME RECORDS

OPPONENT	DATE	VAULT	BARS	BEAM	FLOOR	TOTAL	EVENT	ATHLETE	OPPONENT	DATE	SCORE
1. #8 LSU	1/27/23	49.300	49.350	49.250	49.575	197.475	VAULT	Amanda Wellick	Arkansas Tri-Meet	2/13/15	9.950
2. #25 Missouri	2/19/21	49.350	49.025	49.400	49.575	197.350		Heather Elswick	#6 Alabama	1/16/15	9.950
3. Arkansas Tri	3/16/18	49.025	49.550	49.350	49.375	197.300		Katherine Grable	#4 Alabama	2/22/13	9.950
4. #1 Florida	1/22/21	49.150	49.375	49.350	49.375	197.250	BARS	Hailey Garner	Arkansas Tri-Meet	3/16/18	9.975
5. Arizona	3/2/18	48.975	49.575	49.400	49.325	197.275	BEAM	Norah Flatley	#14 Missouri	2/24/23	9.975
6. #23 Kentucky	2/26/16	49.000	49.550	49.325	49.350	197.225		Kennedy Hambrick	#58 SEMO	2/6/22	9.975
#25 LSU	1/20/12	49.400	49.450	48.950	49.425	197.225		Sophia Carter	Arizona	3/2/18	9.975
8. #8 Auburn*	1/14/22	49.050	49.550	49.300	49.300	197.200		Sophia Carter	#11 Georgia	1/26/18	9.975
9. #11 Georgia	1/26/18	49.100	49.175	49.425	49.475	197.175	FLOOR	Katherine Grable	#2 Oklahoma	3/14/14	9.975
10. Kentucky	2/21/14	49.250	49.125	49.275	49.450	197.100		Jaime Pisani	#13 Auburn	2/3/12	9.975
#4 Alabama	2/22/13	49.425	49.175	49.150	49.350	197.100	AA	Kennedy Hambrick	#25 Missouri	2/19/21	39.750

*2022 Auburn meet held at Bud Walton Arena

MEET NINE VS GEORGIA MARCH 5, 2023

JORDYN WIEBER

FOURTH-YEAR HEAD COACH

Olympic gold medalist Jordyn Wieber was introduced as the head coach of the Arkansas Women's Gymnastics program on Wednesday, April 24, 2019, by Vice Chancellor and Director of Athletics Hunter Yurachek.

During her third season in 2022, Wieber guided the Gymsbacks to their 18th consecutive regional appearance and second straight regional final. The team set a new regional bars record (49.450) and a new regional floor record (49.400). The Hogs finished the year ranked 16th in the country, maintaining the program's 17-year streak in the top 20. All-arounder Kennedy Hambrick and bars specialist Sarah Shaffer both earned individual NCAA Championships berths, extending Wieber's unblemished national appearance streak in each eligible year. Hambrick earned her fifth All-American honor at the event and became the first-ever Gymsback to compete at NAAs as an individual all-arounder in consecutive years. Arkansas' 196.450 at SEC Championships in 2022 is the third-best in program history and the best finish since Wieber took the program helm.

At SEC Championships, Arkansas finished with their best score in Wieber's tenure, 196.450, and coached Kennedy Hambrick and Sarah Shaffer to All-SEC honors and Kalyxta Gamiao and Leah Smith to SEC All-Freshman Team honors, the most Gymsbacks on the SEC postseason lists since 2018.

Wieber brought her London 2012 and UCLA teammate Kyla Ross on to the staff for the 2022 season, whose beam coaching helped Arkansas reach a new program high of 49.250 on the event. The Gymsbacks also set a new program record on vault of 49.500 and posted three of its best 10 bars scores ever.

Wieber helped bring a long-awaited dream for the Arkansas program to light in 2022 as the team hosted its first-ever meet in Bud Walton Arena. It was attended by 10,345 fans, a new program single meet record, and the second time in the Wieber era that a new record has been set. The team also set new program highs in total attendance (24,830), which ranked seventh-best in the country, and in season tickets with 1,711. Each year since Wieber's arrival, the Gymsbacks have ranked in the top 10 in average attendance.

Wieber has coached three regular-season All-Americans in Sophia Carter (2020), Maggie O'Hara (2021) and Kennedy Hambrick (2020, 2021). The Razorbacks set an all-time team score in 2021 (197.425) and Hambrick became the new all-around score record holder (39.750). Under her guidance in and out of the gym, Arkansas saw its first SEC Scholar-Athlete of the Year in 10 years in 2022 with Bailey Lovett, and the team has set a new streak of three consecutive years with a team GPA of 3.5 or above.

The Gymsbacks earned their first-ever spot in the SEC night session in 2021 and advanced to the NCAA regional final after scoring a post-season program best 197.250 on day one. In total, Arkansas registered fives scores of 197.000 or better in 2021 for the first time in program history. In 2020, the Gymsbacks ranked as high as fourth in the nation on floor and finished the season ninth in the nation. It was against No. 13 Kentucky on Jan. 24 that Arkansas scored a 49.525 on the floor, the second-highest event total in program history.

Headed into 2022, Arkansas held onto the third-longest active streak for meets with a score of 49.000 or higher, coming in with 32 straight meets, behind Alabama (33) and Florida (35). During the 2022 slate, the Gymsbacks extended that streak to 39 meets. In Wieber's first year, Arkansas scored a 49.00 or higher in 14 of 16 events over the course of four home meets, nearly 90 percent of all events. The Razorbacks' success on the floor helped them lock in back-to-back SEC wins against No. 20 Missouri and No. 10 Georgia mid-way through the season. The consecutive wins marked the first time since 2017 that Arkansas won two-straight conference meets and consecutive meets against a ranked opponent.

Arkansas saw six Gymsbacks wrap up the 2020 season ranked in the top 100 by Road to Nationals in at least one event, with four Hogs finishing with multiple top 100 rankings. With Wieber's lead, Arkansas won 27 event titles through 10 meets. Hambrick finished the season with the most individual titles among the Gymsbacks, securing 11 event titles including a team-high four all-around titles.

The first home meet of the Wieber era was held on Jan. 17 against No. 3 Denver, bringing a then-record crowd of 6,714 fans to Barnhill Arena. On Feb. 21, Coach Wieber and her Arkansas squad hosted Auburn for a Women's Empowerment Meet, the first of its kind in NCAA gymnastics and now an annual tradition for the Gymsbacks.

Wieber wrapped up her third season as a volunteer assistant coach at UCLA and her sixth with the program in 2019, assisting the team in a variety of roles during her first three years in Westwood following her Olympic career. Wieber coached the Bruins on floor exercise, an event in which UCLA finished the 2018 and 2019 regular seasons ranked No. 1 in the nation. In 2019, the Bruins recorded scores of 49.5 or better in 11 of 14 meets, averaging a national-best 49.604 on floor. UCLA hit a season-high 49.825 on March 16, which ranks No. 3 all-time in school history, behind five scores of 9.925 or better in that meet, including two perfect 10s. The floor squad also posted marks of 49.775 (March 23) and 49.750 (Feb. 16) over the course of the year, as four Bruins earned regular season All-America honors in the event - Katelyn Ohashi, Kyla Ross, Gracie Kramer and Felicia Hano. At the NCAA Championships on April 19-20, Wieber coached Ross to the individual floor title with a score of 9.950, the program's second in as many years after Ohashi took home the crown in 2018. After winning their semifinal session with a 197.650 (49.6125 in the floor), UCLA finished third overall in the finals.

The 2018 Bruins scored 49.4 or higher in 11 meets and 49.6 or higher in three meets, including a national season-high of 49.775 set Feb. 25. She and her fellow UCLA coaches were named the 2018 West Region Assistant Coaches of the Year, as they helped lead the Bruins to Pac-12, NCAA regional and NCAA national titles.

Wieber, who has been a vocal advocate for safe sport, has won many awards in the past several years, including the Arthur Ashe Courage Award at the ESPYs, the Rising Star Award by the Los Angeles Business Journal, and the Giant Steps A Hero Among Us Award.

A member of the "Fierce Five" United States squad that won team gold at the 2012 Olympics, Wieber was a two-time U.S. all-around champion (2011 and 2012) and the 2011 World all-around champion. Her illustrious elite career included three medals (all-around and team gold, beam bronze) at the 2011 World Championships, four U.S. senior national titles (all-around, bars and floor in 2011 and all-around in 2012). She was also the 2008 U.S. junior all-around, vault and floor exercise champion and the American Cup all-around champion in 2009, 2011 and 2012. She dominated the competition at the 2010 Pacific Rim Championships, winning four gold medals (all-around, uneven bars, floor exercise, team) and one silver (vault). In her first international competition at the 2007 Junior Pan American Championships, she won gold medals on uneven bars and balance beam, silver in the all-around and bronze on floor exercise. Wieber officially retired from competitive gymnastics in 2015.

Wieber, from DeWitt, Mich., graduated from UCLA in 2017 with a degree in Psychology. She was a 2016 inductee into the Greater Lansing Sports Hall of Fame, a 2021 Michigan Sports Hall of Fame Inductee and is also a member of the USA Gymnastics Hall of Fame.



GYMBACK ROUTINES/CAREER HIGHS

REESE DROTAR

BARS

Maloney + bail handstand
Double layout dismount
CAREER/SEASON HIGH: 9.950/9.950

NORAH FLATLEY

VAULT

Yurchenko full
CAREER/SEASON HIGH: 9.900/9.900

BARS

Higgins + Jaeger
Bail handstand
Double layout dismount
CAREER/SEASON HIGH: 9.975 (UCLA)/9.925

BEAM

Front aerial + back handspring + back layout stepout
Leg up full turn + split jump + beat jump
Back handspring + layout 1.5 dismount
CAREER/SEASON HIGH: 9.975/9.975

FLOOR

Triple full
Front handspring + front double full
Switch ring + switch half
1.5 + front layout
CAREER/SEASON HIGH: 9.975 (UCLA)/9.900

ALL-AROUND

CAREER/SEASON HIGH: 39.750 (UCLA)/39.575

KALYXTA GAMIAO

BEAM

Back layout stepout + layout stepout
Side somi
Switch leap + split jump
Full turn
Round off 1.5 dismount
CAREER/SEASON HIGH: 9.925/9.925

FLOOR

Double pike
1.5 + round-off back handspring + double full
Tour jete half + split full
Double tuck
CAREER/SEASON HIGH: 9.775/9.775

KIARA GIANFAGNA

BARS

Ray + overshoot
Full-twisting double back dismount
CAREER/SEASON HIGH: 9.875/--

BEAM

Back handspring + layout stepout
Full turn
Kick-over front + beat jump
Beat jump + straddle half
Round-off layout 1.5 dismount
CAREER/SEASON HIGH: 9.900/9.900

KENNEDY HAMBRICK

VAULT

Yurchenko 1.5
CAREER/SEASON HIGH: 9.975/--

BARS

Blind change + Jaeger + overshoot
Full twisting double back dismount
CAREER/SEASON HIGH: 9.950/9.100

BEAM

Full turn
Back handspring + layout stepout
Switch leap + switch half
Beat jump + straddle 3/4
Cartwheel Gainer full dismount
CAREER/SEASON HIGH: 9.975/9.850

FLOOR

Double tuck
Back layout 1.5 + front layout
Switch half + Popa
Double pike
CAREER/SEASON HIGH: 9.975/--

ALL-AROUND

CAREER/SEASON HIGH: 39.750/--

MADISON HICKEY

VAULT

Yurchenko full
CAREER/SEASON HIGH: 9.875/--

FLOOR

Double pike
Switch side + Popa
Back layout 1.5 + front layout
Double tuck
CAREER/SEASON HIGH: 9.925/9.925

MADDIE JONES

BARS

Blind change + Jaeger
Pak salto
Half pirouette
Double layout dismount
CAREER/SEASON HIGH: 9.950/9.950

FLOOR

Front double full
Back layout 1.5 + front layout
Switch ring leap + switch leap half
Rudi
CAREER/SEASON HIGH: 9.925/9.900

EMMA KELLEY

VAULT

Yurchenko full
CAREER/SEASON HIGH: 9.800/9.750

BARS

Maloney + bail handstand
Full-twisting double back dismount
CAREER/SEASON HIGH: 9.650/--

FLOOR

Full in
Switch leap + wolf full + wolf full
1.5 + front full
CAREER/SEASON HIGH: 9.050/--

BAILEY LOVETT

BEAM

Free leap mount
Full turn
Front aerial + back layout stepout
Switch leap + split jump + beat jump
Tuck Gainer full dismount
CAREER/SEASON HIGH: 9.950/9.825

FLOOR

Double layout
Double tuck
Switch half + Popa
Front layout + front layout full
CAREER/SEASON HIGH: 9.950/9.900

GYMBACK ROUTINES/CAREER HIGHS

JAIME PRATT

BARS

Ray
Bail handstand
Double layout dismount
CAREER/SEASON HIGH: 9.850/9.850

BEAM

Back handspring + back handspring + layout stepout
Switch leap + split jump
Full turn
Round-off layout 1.5 dismount
CAREER/SEASON HIGH: --/--

FLOOR

Front double full
1.5 + front layout
Tour jete half + Popa
Rudi
CAREER/SEASON HIGH: --/--

FRANKIE PRICE

VAULT

Yurchenko full
CAREER/SEASON HIGH: 9.900/9.900

FLOOR

Double layout
1.5 + front pike
Switch side + Popa
Double pike
CAREER/SEASON HIGH: 9.975/9.975

JENSEN SCALZO

BARS

Blind change + Jaeger + overshoot
Double layout dismount
CAREER/SEASON HIGH: 9.925/9.900

BEAM

Back handspring catch mount
Back handspring + layout stepout
Full turn
Split jump + stag jump
Round-off + layout 1.5 dismount
CAREER/SEASON HIGH: --/--

MAKENZIE SEDLACEK

VAULT

Yurchenko 1.5
CAREER/SEASON HIGH: 9.950/9.950

BARS

Maloney + Pak salto
Maloney half
Full-twisting double tuck dismount
CAREER/SEASON HIGH: 9.700/--

FLOOR

Full in tuck
Back layout 1.5 + front layout
Switch half + Popa
Double tuck
CAREER/SEASON HIGH: 9.900/--

LEAH SMITH

VAULT

Yurchenko full
CAREER/SEASON HIGH: 9.950/9.950

BARS

Maloney + Bail Handstand
Toe-on, toe-off
Double layout dismount
CAREER/SEASON HIGH: 9.850/--

BEAM

Back handspring catch mount
Switch leap + straddle 1/4 jump
Back handspring + layout stepout
Full turn
Round-off double full dismount
CAREER/SEASON HIGH: 9.900/--

FLOOR

Pike full in
Front tuck stepout + round-off back handspring double tuck
Switch side + Popa
CAREER/SEASON HIGH: 9.950/9.950

ALL-AROUND

CAREER/SEASON HIGH: 39.425/--

CALLY SWANEY

VAULT

Yurchenko full
CAREER/SEASON HIGH: --/--

BARS

Ray
Pak salto
Half pirouette
Double layout dismount
CAREER/SEASON HIGH: 9.850/9.850

BEAM

Front walkover mount
Back handspring + layout stepout + layout stepout
Switch leap + split jump
Full turn
Back handspring + layout 1.5 dismount
CAREER/SEASON HIGH: 9.925/9.925

FLOOR

Double pike
Front layout + front full
Switch ring + switch half + wolf full
Rudi
CAREER/SEASON HIGH: --/--

CAMI WEAVER

VAULT

Yurchenko full
CAREER/SEASON HIGH: 9.900/9.900

BARS

Tkatchev
Toe-on, toe-off
Pak salto
Half pirouette
Double layout dismount
CAREER/SEASON HIGH: --/--

BEAM

Back handspring + layout stepout + layout stepout
Switch leap + split jump
Full turn
Round-off layout 1.5 dismount
CAREER/SEASON HIGH: 9.950/9.950

LAUREN WILLIAMS

VAULT

Yurchenko 1.5
CAREER/SEASON HIGH: 9.925/9.925

BEAM

Back handspring + layout stepout
Switch leap + straddle 1/4
Full turn
Front aerial + beat jump
Round-off 1.5 dismount
CAREER/SEASON HIGH: 9.675/9.675

FLOOR

Full in
Back layout 1.5 + front layout
Switch side + Popa
Double tuck
CAREER/SEASON HIGH: 9.950/9.950