



2023



ARKANSAS

*Gymnastics*

MEET  
NOTES



## THE SCHEDULE

OVERALL: 3-5 | SEC: 1-3 | H: 1-2 | A: 1-1 | N: 1-2

JAN. 7	VS NEBRASKA	LINCOLN, NEB.	W, 196.225-195.000
JAN. 13	VS ALABAMA	BARNHILL ARENA	L, 195.525-196.525
JAN. 20	AT AUBURN	AUBURN, ALA.	L, 197.500-196.675
JAN. 27	VS LSU	BARNHILL ARENA	W, 197.475-197.250
FEB. 3	VS FLORIDA	BUD WALTON ARENA	L, 197.400-197.875
FEB. 11	METROPLEX CHALLENGE		3rd of 4, 197.125
FEB. 17	AT KENTUCKY	LEXINGTON, KY.	7:30 SEC NETWORK
FEB. 24	VS MISSOURI	BARNHILL ARENA	7:45 SEC NETWORK
MAR. 3	AT GEORGIA	ATHENS, GA.	6:00 SECN+
MAR. 10	VS MINNESOTA	BUD WALTON ARENA	6:45 SECN+
MAR. 18	SEC CHAMPIONSHIPS	DULUTH, GA.	TBA SEC NETWORK

MARCH 29-APRIL 2: NCAA REGIONALS  
APRIL 14-16: NCAA CHAMPIONSHIPS



## VS KENTUCKY IN LEXINGTON

FEBRUARY 17, 2023 AT 7:30 PM (CT)

MEMORIAL COLISEUM  
LIVE SCORING: STATBROADCAST  
WATCH: SEC NETWORK

## GYMBACK NOTABLES

### Gymbacks Keep Up Consistency, Place Third At Metroplex

The Arkansas gymnastics team yet again showed what it's capable of as the Hogs posted a team score of 197+ for the third consecutive week in Feb. 11's Metroplex Challenge from Fort Worth. The No. 16 Gymbacks came in third behind No. 1 Oklahoma (198.125) and No. 11 Alabama (198.000) and defeated No. 24 Stanford (196.725) with a score of 197.125. It's a new road high for Arkansas this season, and the team's 20th mark over 197 in program history. The Hogs have posted 197 or above in three consecutive weeks just once before, in head coach Jordyn Wieber's second season in 2021. The team's average in that span in was 197.258, while this year's Gymbacks have posted an average score of 197.333 over the last three outings. Two Gymbacks earned new career highs of 9.925 on the night, senior Maddie Hickey on floor and freshman Reese Drotar on bars. Drotar's routine was part of a huge rotation for Arkansas, in which the Hogs earned a season-best 49.375. Graduate transfer Norah Flatley had a podium finish for Arkansas, as her 9.900 on beam placed her a five-way tie for second.

### Arkansas Sets New Attendance, Personal Highs From Bud Walton Arena

The Gymbacks made their return to Bud Walton Arena on Feb. 3 and put on a show in front of a program record 11,031 fans. No. 18 Arkansas fell to No. 2 Florida 197.400-197.875, but the team had plenty of high points on the day. The score is the Hogs' third-highest ever as a program, and a new record in Bud Walton Arena. Arkansas also earned a new beam best for 2023 with a 49.350, and outscored Florida on floor 49.475-49.250. Freshman and SEC Freshman of the Week Lauren Williams earned a share of the floor title with a personal high of 9.950, and fellow freshman Cally Swaney earned new career bests on both bars and beam. Her 9.925 on beam was good for third place. For the second consecutive year, the Hogs set a new attendance high at Bud Walton Arena, and the meet is the fourth highest-attended women's event ever held at the venue.

### Williams Tabbed SEC Freshman Of The Week

After a stellar start to her rookie season and a record-breaking weekend, the Gymbacks' Lauren Williams has been named SEC Freshman of the Week. The honor is the first for Arkansas since 2021, and the team's first Freshman of the Week in nearly five years, the last being Sarah Shaffer on March 20, 2018. The Rogers, Ark. native posted career highs on both vault (9.925) and floor (9.925) in the team's victory over LSU on Jan. 27, the first for the Hogs against the Tigers since 2012 and their first SEC victory since 2021. Williams' scores were both good for podium finishes: a tie for third on vault and tie for second on floor. Williams' 9.925 on floor contributed to a 49.575 event score, the second-highest in program history, and she also helped propel Arkansas to a new program high score of 197.475 in front of the team's first-ever sellout crowd of 7,147, a new Barnhill Arena record. Lauren is currently ranked No. 43 on vault, 12th among SEC competitors and first among SEC freshmen with an average score of 9.856. On floor, she checks in at No. 23, sixth among SEC competitors and first among SEC freshmen with an average score of 9.900. She has yet to score below a 9.800 on vault or below a 9.875 on floor and is currently on a three-meet streak of 9.900 or above on floor. Williams and the No. 18 Gymbacks return to action on Friday as the team takes on No. 2 Florida from Bud Walton Arena at 6:45 p.m.

### Gymbacks Get New Barnhill Attendance, Program Score Records In Sellout

The Gymbacks made the most of their home gym advantage on Jan. 27 as the team made history with a new program high team score, a new Barnhill attendance record, and the team's first sellout. Arkansas defeated LSU 197.475-197.250, the first time since 2012. The Hogs outscored the Tigers on three events en route to the final. It's the second time in head coach Jordyn Wieber's tenure that the Gymbacks have recorded a new program high team score. Norah Flatley and Leah Smith took event titles for Arkansas, on bars (9.925) and floor (9.950), respectively, both Arkansas records for the two. Freshman phenom Lauren Williams again shined, with new career highs of 9.925 on both floor and vault, which placed her in second and third. -->

## NUMBERS TO KNOW

197.333

Arkansas' average score over the past three meets, the team's best stretch in program history

10th

Arkansas' highest event ranking this week, on floor, with a 49.342 average

40

This week's meeting between the Wildcats and Razorbacks will be No. 40 all-time

20

Scores over 197 now recorded by Arkansas dating back to 2012

## FOLLOW THE SHOW

TWITTER @RAZORBACKGYM  
INSTAGRAM @RAZORBACKGYM  
FACEBOOK ARKANSAS RAZORBACK GYMNASTICS

## BY THE NUMBERS

ARKANSAS	49.204	49.008	49.183	49.342	196.738
	VAULT	BARS	BEAM	FLOOR	AVG
KENTUCKY	49.221	49.275	49.308	49.279	197.083

MEET SEVEN VS KENTUCKY FEBRUARY 17, 2023

## ALPHABETICAL ROSTER

NAME	EVENTS	CLASS	Ht.	HOMETOWN	CLUB GYM/PREV. SCHOOL
Reese Drotar	AA	Freshman	5-8	Los Gatos, Calif.	Airbone Gymnastics
Norah Flatley	AA	Graduate	5-1	Des Moines, Iowa	Chow's Gymnastics/UCLA
Kalyxta Gamiao	AA	Sophomore	4-10	Honolulu, Hawaii	Hawaiian Island Twisters
Kiara Gianfagna	AA	Senior	4-10	Brownsburg, Ind.	Jaycie Phelps Athletic Center
Kennedy Hambrick	AA	Graduate	5-3	Houston, Texas	Reflex Gymnastics
Madison Hickey	V, FX	Junior	5-0	Sycamore, Ill.	Energym Gymnastics
Maddie Jones	AA	Sophomore	5-2	Charlotte, N.C.	Southeastern Gymnastics
Emma Kelley	AA	Junior	5-2	Houston, Texas	Fun & Fitness Gymnastics
Bailey Lovett	AA	Graduate	5-2	Greensboro, N.C.	Kristie Phillips Athletic Center
Jaime Pratt	AA	Freshman	5-2	Hanover, Pa.	Hanover Gymnastics
Frankie Price	AA	R-Freshman	5-0	Dallas, Texas	Texas Dreams Gymnastics
Jensen Scalzo	AA	Junior	5-4	Fort Lauderdale, Fla.	American Twisters Gymnastics
Makenzie Sedlacek	AA	Sophomore	5-4	West Chicago, Ill.	Midwest Elite Gymnastics Academy
Leah Smith	AA	Sophomore	5-1	Houston, Texas	World Champions Centre
Cally Swaney	AA	Freshman	5-2	Belmont, N.C.	First in Flight
Cami Weaver	AA	R-Freshman	5-1	Pelham, Ala.	Legacy Gymnastics
Lauren Williams	AA	Freshman	5-3	Rogers, Ark.	Aspire Gymnastics

## BY STATE

<b>ALABAMA</b>	
Cami Weaver	Pelham
<b>ARKANSAS</b>	
Lauren Williams	Rogers
<b>CALIFORNIA</b>	
Reese Drotar	Los Gatos
<b>FLORIDA</b>	
Jensen Scalzo	Parkland
<b>HAWAII</b>	
Kalyxta Gamiao	Honolulu
<b>ILLINOIS</b>	
Madison Hickey	Sycamore
Makenzie Sedlacek	West Chicago

<b>INDIANA</b>	
Kiara Gianfagna	Brownsburg

<b>IOWA</b>	
Norah Flatley	Des Moines

<b>NORTH CAROLINA</b>	
Maddie Jones	Charlotte
Bailey Lovett	Greensboro
Cally Swaney	Belmont

<b>PENNSYLVANIA</b>	
Jaime Pratt	Hanover

<b>TEXAS</b>	
Kennedy Hambrick	Houston
Emma Kelley	Houston
Frankie Price	Dallas
Leah Smith	Houston

## BY CLASS

<b>FRESHMEN (6)</b>	
Reese Drotar	Freshman
Jaime Pratt	Freshman
Cally Swaney	Freshman
Lauren Williams	Freshman
Frankie Price	R-Freshman
Cami Weaver	R-Freshman

<b>SOPHOMORES (4)</b>	
Kalyxta Gamiao	Sophomore
Maddie Jones	Sophomore
Makenzie Sedlacek	Sophomore
Leah Smith	Sophomore

<b>JUNIORS (2)</b>	
Emma Kelley	Junior
Jensen Scalzo	Junior

<b>SENIORS (5)</b>	
Kiara Gianfagna	Senior
Madison Hickey	Senior
Norah Flatley	Graduate
Kennedy Hambrick	Graduate
Bailey Lovett	Graduate

## PRONUNCIATIONS

Reese Drotar	DRO-tar
Kalyxta Gamiao	Callista GAH-meow
Kiara Gianfagna	Gee-uh-FON-ya
Bailey Lovett	LOVE-it
Makenzie Sedlacek	said-LA-check
Cally Swaney	SWAY-knee
Jordyn Wieber	WEE-bur

## COACHING STAFF

TITLE	NAME	EXPERIENCE	ALMA MATER
Head Coach	Jordyn Wieber	Fourth Season	UCLA, '17
Assistant Coach	Chris Brooks	Fourth Season	Oklahoma, '09
Assistant Coach	Kyla Ross	Second Season	UCLA, '20
VAC/Choreographer	Jackie Terpak	First Season	Temple, '22
Trainer	Kaitlyn Hocutt	First Season	Ohio State, '19
Strength & Conditioning	Whitney Smith	Ninth Season	Arkansas, '10
Director of Operations	Julie Muhlendorf	Fourth Season	Alabama, '11



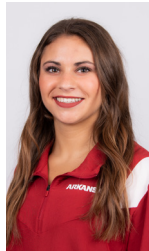
REESE DROTAR  
AA | FR | 5-8



NORAH FLATLEY  
AA | GR | 5-1



KALYXTA GAMIAO  
AA | SO | 4-10



KIARA GIANFAGNA  
AA | SR | 4-10



KENNEDY HAMBRICK  
AA | GR | 5-3



MADISON HICKEY  
V/FX | SR | 5-0



MADDIE JONES  
AA | SO | 5-2



EMMA KELLEY  
AA | JR | 5-2



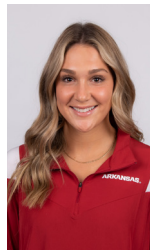
BAILEY LOVETT  
AA | GR | 5-2



JAIME PRATT  
AA | FR | 5-2



FRANKIE PRICE  
AA | R-FR | 5-0



JENSEN SCALZO  
AA | JR | 5-4



MAKENZIE SEDLACEK  
AA | SO | 5-4



LEAH SMITH  
AA | SO | 5-1



CALLY SWANEY  
AA | FR | 5-2



CAMI WEAVER  
AA | R-FR | 5-1



LAUREN WILLIAMS  
AA | FR | 5-3

## R2N TOP 25

NO.	TEAM	NQS	AVG.	HIGH
1	Oklahoma	--	198.038	198.425
2	Florida	--	<b>197.838</b>	<b>198.350</b>
3	Michigan	--	197.792	198.300
4	Utah	--	197.679	198.200
5	Auburn	--	<b>197.446</b>	<b>197.750</b>
6	UCLA	--	197.425	197.850
7	California	--	197.317	197.600
8	LSU	--	<b>197.200</b>	<b>197.700</b>
9	Alabama	--	<b>197.196</b>	<b>198.000</b>
10	Denver	--	197.150	197.500
11	Kentucky	--	<b>197.083</b>	<b>197.825</b>
12	Oregon State	--	196.961	197.375
13	Ohio State	--	196.835	197.575
14	Arkansas	--	<b>196.738</b>	<b>197.475</b>
15	Michigan State	--	196.713	197.450
16	Missouri	--	<b>196.663</b>	<b>196.975</b>
17	Minnesota	--	196.542	197.075
18	Iowa	--	196.533	196.900
19	Georgia	--	<b>196.514</b>	<b>197.225</b>
20	Arizona State	--	196.450	196.900
21	Southern Utah	--	196.429	197.125
22	Stanford	--	196.263	196.725
23	Illinois	--	196.225	196.700
24	Maryland	--	196.215	196.875
25	Washington	--	196.029	196.750

SEC teams in bold

## WXW EVENT RANKINGS

WEEK	TEAM	VT	UB	BB	FX
Preseason	11	--	--	--	--
1/9	16	T21	14	17	T19
1/16	25	T18	T45	T11	T14
1/23	23	T13	T37	T19	T12
1/30	18	13	33	16	7
2/06	16	13	31	15	6
2/13	14	13	T25	13	10
2/20	--	--	--	--	--
2/27	--	--	--	--	--
3/06	--	--	--	--	--
3/13	--	--	--	--	--
3/20	--	--	--	--	--
4/24	--	--	--	--	--

## IND. EVENT RANKINGS (TOP 50)

Gymback	AA	VT	UB	BB	FX
Reese Drotar	--	--	--	--	--
Norah Flatley	--	--	T31	--	--
Kalyxta Gamiao	--	--	--	--	--
Kiara Gianfagna	--	--	--	--	--
Kennedy Hambrick	--	--	--	--	--
Madison Hickey	--	--	--	--	--
Maddie Jones	--	--	--	--	--
Emma Kelley	--	--	--	--	--
Bailey Lovett	--	--	--	--	--
Jaime Pratt	--	--	--	--	--
Frankie Price	--	--	--	--	--
Jensen Scalzo	--	--	--	--	--
Makenzie Sedlacek	--	--	--	--	--
Leah Smith	--	--	--	--	T38
Cally Swaney	--	--	--	--	--
Cami Weaver	--	--	--	--	--
Lauren Williams	--	T48	--	--	--

## NOTEBOOK CONTINUED

Freshman Reese Drotar and sophomore Maddie Jones split second on bars (9.875), freshman Cally Swaney and Flatley shared second on beam (9.900) and Jones, Bailey Lovett and Frankie Price all earned a 9.900 for a four-way tie for third on floor to round out Arkansas' podium finishes. The performance came in front of 7,147 fans, the most in Barnhill since Wieber's debut home meet on Jan. 17, 2020.

### Hogs Make Big Strides, But Fall To Tigers

Arkansas hit the road for the team's first SEC road dual on Jan. 20, and while the Gymbacks stayed within a tenth of the home team for three rotations, they ultimately finished the day with a 196.675-197.500 loss. The Hogs made significant improvements in the outing and set new season highs on bars (49.225), vault (49.325), floor (49.300), and also earned a new season high mark as a team with 196.675. Redshirt freshman Cami Weaver earned her first beam title at Arkansas with a career high of 9.950, which is also the Hogs' highest score of the season so far. The Gymbacks had seven other podium finishes on the night and placed someone in the top three on every event. Graduate transfer Norah Flatley had another strong showing for the Hogs. She placed second all-around with a 39.550, came in second on bars (9.900) and beam (9.900), and tied for third on floor with another 9.900 mark.

### Arkansas Falls To Alabama In Barnhill Debut

Arkansas kicked off its home slate on Jan. 13 and despite a big push in the final two rotations, the Hogs fell to the Crimson Tide, 195.525-196.525. While the team didn't pull out a victory, the Hogs did outscore Alabama on three events: vault (49.150), beam (49.325) and floor (49.350). Graduate transfer Norah Flatley shined in her Barnhill Arena debut, and won the vault and beam titles, along with a share of bars. It was her first all-around appearance as a Gymback, and she placed first with a 39.575. Junior Jensen Scalzo shared the bars top spot with Flatley as both scored 9.900, and for the second consecutive week freshman and Rogers native Lauren Williams took the bars title, with her first 9.900 mark at Arkansas.

### Razorbacks Open Season With Dual Victory Over Huskers

The Arkansas gymnastics team kicked its season off on a high note as the Hogs defeated the Huskers 196.225-195.000 in Lincoln on Jan. 7. The Gymbacks outscored the Huskers on vault, bars, and floor, and are now 4-5 all-time against Nebraska. The meet also marked the second straight season-opening win for the Hogs. The team's newcomers and underclassmen were especially impactful in the win. Graduate transfer Norah Flatley took home the bars title with a score of 9.900 and a share of vault, on which she scored a 9.850. Flatley split the vault title with redshirt freshman Cami Weaver. It was Weaver's first appearance on vault since she sustained a season-ending injury in her collegiate debut on the event, making the victory extra special. Redshirt freshman Frankie Price and freshman Lauren Williams both score 9.875 in their Arkansas floor debuts, which earned them a piece of a three-way tie for first place. Each of Arkansas' freshmen appeared on at least one event in the meet in addition to Williams, with Reese Drotar, Jaime Pratt and Cally Swaney all also in the bars lineup.

### Gymbacks Ranked 15th In WCGA Preseason Poll

Arkansas gymnastics has been tabbed one of the top 15 programs in the country again this season, as the team received a No. 15 ranking in the Women's College Gymnastics Association coaches poll on Friday. The

ranking continues a 17-year streak in which the Gymbacks have been placed in the preseason top 20, and the third season in head coach Jordyn Wieber's tenure in the top 15. Arkansas finished its 2022 slate in the Sweet 16, the team's 18th straight regional appearance and second consecutive regional final. The Hogs finished the regular season ranked in the top 25 on all events and checked in as high as No. 8 on beam and No. 9 on floor and No. 10 on vault. The team carries several new program records into the 2023 campaign, one on each event. The Razorbacks set new program highs on vault (49.500) and beam (49.475) and regional records on bars (49.450) and floor (49.400). Arkansas brings back key returners in five-time All-American Kennedy Hambrick, Bailey Lovett and Leah Smith, as well as the addition of UCLA graduate transfer Norah Flatley, a three-time All-American and the 2022 College Gym News Comeback Gymnast of the Year. Both Hambrick and Flatley competed at the NCAA Gymnastics Championships in April as individual all-around qualifiers. The Razorbacks also add four freshman contributors in Reese Drotar, Jaime Pratt, Cally Swaney and Lauren Williams. Regular season action then begins on Sat, Jan. 7 as the Hogs take on the Nebraska Cornhuskers in Lincoln at 3 p.m.

### Gymbacks Add Four On Signing Day

The Razorback gymnastics family and head coach Jordyn Wieber have announced four new additions for the 2024 slate on National Signing Day in Hailey Klein, Priscilla Park, Dakota Essenpries and Chandler Buntin. "We are so thrilled about this recruiting class and for their future with Arkansas Gymnastics. I could not be more excited to welcome them to the Razorback Gymnastics family, not only for their abilities, but because of what I know they will collectively bring to the program as confident and fierce competitors," Wieber said. "Hailey Klein has competed at the elite level and brings an exceptional quality to all events, especially on balance beam. Priscilla Park comes from a club that consistently produces high-level college gymnasts. I have no doubt that she will be the complete package in college, but she will be a fantastic leader as well. We are equally excited about the additions of Dakota Essenpries and Chandler Buntin. Dakota will bring a high level of difficulty on floor and vault and Chandler has an unmatched level of performance and artistry, as well as enthusiasm for our sport!"

## TEAM SCORES

DATE	VAULT	BARS	BEAM	FLOOR	TOTAL	2-ROT. SCORE	3-ROT. SCORE
01.07	48.950	49.100	49.025	49.150	196.225	98.050	147.075
01.13	49.150	47.700	49.325	49.350	195.525	96.850	146.175
01.20	49.325	49.225	48.825	49.300	196.675	98.550	147.850
01.27	49.300	49.350	49.250	49.575	147.475	98.650	147.900
02.03	49.275	49.300	49.350	49.475	197.400	98.575	147.925
02.11	49.225	49.375	49.325	49.200	197.125	98.425	147.800
02.17							
02.24							
03.03							
03.10							
03.18							

## IND. EVENT TITLES

NAME	V	UB	BB	FX
Reese Drotar	--	--	--	--
Norah Flatley	1	2	3	2
Kalyxta Gamiao	--	--	--	--
Kiara Gianfagna	--	--	--	--
Kennedy Hambrick	--	--	--	--
Madison Hickey	--	--	--	--
Maddie Jones	--	--	--	--
Emma Kelley	--	--	--	--
Bailey Lovett	--	--	--	--
Jaime Pratt	--	--	--	--
Frankie Price	--	--	--	1
Jensen Scalzo	--	--	1	--
Makenzie Sedlacek	--	--	--	--
Leah Smith	--	--	--	1
Cally Swaney	--	--	--	--
Cami Weaver	--	1	--	--
Lauren Williams	--	--	--	3

## INDIVIDUAL LEADERS

DATE	VAULT	BARS	BEAM	FLOOR	AA
01.07	Flatley/Weaver, 9.850	Flatley, 9.900	Hambrick/Weaver, 9.825	Price/Williams, 9.875	--
01.13	Flatley, 9.900	Scalzo/Flatley, 9.900	Flatley, 9.900	Williams, 9.900	Flatley, 39.575
01.20	Price, 9.900	Flatley, 9.900	Weaver, 9.950	Williams/Flatley, 9.900	Flatley, 39.550
01.27	Williams, 9.925	Flatley, 9.925	Swaney/Flatley, 9.900	Smith, 9.925	--
02.03	Price, 9.900	Scalzo, 9.900	Swaney, 9.925	Price, 9.925	Flatley, 38.500
02.11	Price/Smith, 9.875	Drotar, 9.925	Flatley, 9.900	Hickey, 9.925	--
02.17					
02.24					
03.03					
03.10					
03.18					

## 2023 AWARDS

NAME	AWARD
Lauren Williams	SEC Freshman of the Week (1/31)

## THE LAST TIME ARKANSAS

Scored a 196 or higher at home	196.100 vs. No. 26 Georgia (2/25/22)
Scored a 196 or higher on the road	196.675 at No. 7 Auburn (1/20/23)
Scored a 197 or higher at home	197.475 vs. No. 8 LSU (1/27/23)
Scored a 197 or higher on the road	197.125 at Metroplex Challenge (2/11/23)
Scored a 198 or higher	Never
Won a home meet	vs. No. 8 LSU (1/27/23)
Won a road meet	at Nebraska (1/7/23)
Won a neutral site meet	NCAA Fayetteville Regional (4/10/09)
Lost a home meet	vs. No. 8 Alabama (1/13/23)
Lost a road meet	at No. 7 Auburn (1/20/23)
Lost a neutral site meet	4th of 4, Norman Regional Final (4/2/22)
Won a conference meet	vs. No. 8 LSU (1/27/23)
Won a home conference meet	vs. No. 8 LSU (1/27/23)
Won a road conference meet	at No. 12 Auburn (3/5/21)
Lost a home conference meet	vs. No. 8 Alabama (1/13/23)
Lost a road conference meet	at No. 7 Auburn (1/20/23)
Won the All-Around title at home	Norah Flatley, 39.575 vs. No. 8 Alabama (1/13/23)
Won the All-Around title on the road	Kennedy Hambrick, 39.700 at No 12 Auburn (3/5/21)
Won the Vault title at home	Norah Flatley, 9.900 vs. No. 8 Alabama (1/13/23)
Won the Vault title on the road	Norah Flatley & Cami Weaver, 9.850 at Nebraska (1/7/23)
Won the Bars title at home	Norah Flatley, 9.925 vs. No. 8 LSU (1/27/23)
Won the Bars title on the road	Norah Flatley, 9.900 at Nebraska (1/7/23)
Won the Beam title at home	Norah Flatley, 9.900 vs. No. 8 Alabama (1/13/23)
Won the Beam title on the road	Cami Weaver, 9.950 at No. 7 Auburn (1/20/23)
Won the Floor title at home	Leah Smith, 9.950 vs. No. 8 LSU (1/27/23)
Won the Floor title on the road	Frankie Price & Lauren Williams, 9.875 at Nebraska (1/7/23)
Had an All-American	Kennedy Hambrick, 2022 (17th, AA)
Had an NCAA Individual appearance	Kennedy Hambrick, Sarah Shaffer (2022)

## GYMBACK MAJORS

NAME	AWARD
Reese Drotar	Communication
Norah Flatley	Operations Management (Masters)
Kalyxta Gamiao	Multimedia Storytelling & Production
Kiara Gianfagna	Psychology
Kennedy Hambrick	Operations Management (Masters)
Madison Hickey	Animal Science
Maddie Jones	Organizational Leadership   Marketing
Emma Kelley	Hospitality Management
Bailey Lovett	UA School of Law: First Year
Jaime Pratt	Communication
Frankie Price	Communication
Jensen Scalzo	Communication
Makenzie Sedlacek	Advertising & Public Relations
Leah Smith	Advertising & Public Relations
Cally Swaney	Sport Management
Cami Weaver	Public Health
Lauren Williams	Communication

## THE SERIES

>> Friday's competition will be the 40th-ever meeting between Kentucky and Arkansas, and the Hogs currently have a 25-14 edge in the series, dating back to 2003

>> Despite the overall success against the Wildcats, the Hogs haven't won in Lexington since 2011

>> Kentucky is ranked in the top 15 in three of four events. Arkansas outranks Kentucky on floor with a 49.342 average coming in at No. 10, while the Cats check in at No. 16 with an average of 49.279

### KENTUCKY (25-14)

DATE	W/L	SCORE	LOCATION
2/7/03	W	194.475-192.825	Lexington, Ky. *FIRST WIN
3/29/03	L	194.850-194.875	Birmingham, Ala. (SEC)
1/16/04	W	196.225-195.200	Fayetteville, Ark.
3/20/04	W	194.825-193.850	Duluth, Ga. (SEC)
1/14/05	W	194.925-193.575	Lexington, Ky.
3/26/05	W	195.325-193.800	Duluth, Ga. (SEC)
2/24/06	W	196.350-196.250	Fayetteville, Ark.
3/25/06	W	194.650-191.150	Birmingham, Ala. (SEC)
2/23/07	W	195.850-193.650	Lexington, Ky.
3/31/07	W	194.550-194.000	Little Rock (SEC)
2/15/08	W	195.675-195.175	Fayetteville, Ark.
3/29/08	W	194.650-194.025	Duluth, Ga. (SEC)
2/6/09	W	195.075-194.500	Lexington, Ky.
3/21/09	W	195.650-195.000	Nashville, Tenn. (SEC)
1/29/10	W	196.750-195.325	Fayetteville, Ark.
3/26/10	W	195.275-194.800	Jacksonville, Fla. (SEC)
1/21/11	W	194.975-193.525	Lexington, Ky.
3/19/11	W	195.800-193.950	Birmingham, Ala. (SEC)
1/13/12	W	196.650-191.975	Fayetteville, Ark.
3/24/12	L	194.175-194.350	Duluth, Ga. (SEC)
1/18/13	L	193.075-195.000	Lexington, Ky.
3/23/13	W	196.400-194.600	Little Rock (SEC)
2/21/14	W	197.100-195.975	Fayetteville, Ark.
3/22/14	L	194.900-195.075	Birmingham, Ala. (SEC)
2/20/15	L	195.750-194.825	Lexington, Ky.
3/21/15	W	195.950-195.025	Duluth, Ga. (SEC)
2/26/16	W	197.225-196.700	Fayetteville, Ark.
3/19/16	W	196.500-196.250	Little Rock (SEC)
3/3/17	L	196.525-195.275	Lexington, Ky.
3/18/17	L	196.625-194.900	Jacksonville, Fla. (SEC)
1/12/18	L	196.525-196.950	Fayetteville, Ark.
3/24/18	L	196.425-196.550	St. Louis (SEC)
1/18/19	L	195.275-193.875	Lexington, Ky.

3/23/19	W	196.475-196.225	New Orleans, La. (SEC)
1/24/20	L	196.750-196.650	Fayetteville, Ark.
2/12/21	L	197.000-196.675	Lexington, Ky.
3/20/21	L	196.825-195.600	Huntsville, Ala. (SEC)
2/11/22	L	196.700-195.675	Fayetteville, Ark.
3/19/22	W	196.450-196.350	Birmingham, Ala. (SEC)

## SEC STANDINGS

TEAM	SEC	PCT	HOME	AWAY	OVERALL	PCT	HOME	AWAY	NEUTRAL	AVG.	HIGH
Florida	5-0	1.000	3-0	2-0	8-0	1.000	6-0	2-0	0-0	197.838	197.425
Kentucky	3-1	.750	2-0	1-1	6-2	.750	3-0	1-2	2-0	197.083	197.825
Alabama	2-2	.500	1-1	1-1	5-3	.625	2-1	1-1	2-1	197.196	198.000
Auburn	2-2	.500	2-0	0-2	4-4	.500	3-0	0-2	1-2	197.446	197.750
LSU	2-3	.400	2-0	0-3	2-5	.286	2-1	0-4	0-0	197.200	197.700
Missouri	1-3	.250	1-1	0-2	4-3	.571	1-1	2-2	1-0	196.663	196.975
Georgia	1-3	.250	1-0	0-3	6-7	.462	3-1	0-3	3-3	196.514	197.225
Arkansas	1-3	.250	1-2	0-1	3-5	.375	1-2	1-1	1-2	196.738	197.475

## LINEUPS AND SCORES BY MEET

### VAULT

DATE	1	2	3	4	5	6	TEAM
01.07	Kelley, 9.725	Weaver, 9.850	Flatley, 9.850	Price, 9.675	Smith, 9.725	Williams, 9.800	48.950
01.13	Kelley, 9.750	Weaver, 9.825	Flatley, 9.900	Price, 9.775	Sedlacek, 9.825	Williams, 9.825	49.150
01.20	Weaver, 9.850	Flatley, 9.850	Price, 9.900	Smith, 9.850	Sedlacek, 9.525	Williams, 9.875	49.325
01.27	Weaver, 9.875	Flatley, 9.850	Price, 9.850	Smith, 9.775	Sedlacek, 9.800	Williams, 9.925	49.300
02.03	Weaver, 9.875	Flatley, 9.800	Smith, 9.825	Price, 9.900	Sedlacek, 9.825	Williams, 9.850	49.275
02.11	Weaver, 9.700	Flatley, 9.800	Smith, 9.875	Price, 9.875	Sedlacek, 9.850	Williams, 9.825	49.225
02.17							
02.24							
03.03							
03.10							
03.18							

### BARS

DATE	1	2	3	4	5	6	TEAM
01.07	Swaney, 9.775	Drotar, 9.800	Scalzo, 9.850	Pratt, 9.775	Hambrick, 8.600	Flatley, 9.900	49.100
01.13	Swaney, 8.925	Drotar, 8.975	Scalzo, 9.900	Pratt, 9.825	Hambrick, 9.100	Flatley, 9.900	47.700
01.20	Swaney, 9.825	Scalzo, 9.825	Drotar, 9.800	Jones, 9.850	Pratt, 9.825	Flatley, 9.900	49.225
01.27	Swaney, 9.825	Scalzo, 9.825	Drotar, 9.875	Jones, 9.875	Pratt, 9.850	Flatley, 9.925	49.350
02.03	Swaney, 9.850	Scalzo, 9.900	Drotar, 9.850	Jones, 9.850	Pratt, 9.825	Flatley, 9.850	49.300
02.11	Swaney, 9.825	Scalzo, 9.900	Drotar, 9.925	Jones, 9.900	Pratt, 9.800	Flatley, 9.825	49.375
02.17							
02.24							
03.03							
03.10							
03.18							

### BEAM

DATE	1	2	3	4	5	6	TEAM
01.07	Gamiao, 9.775	Williams, 9.675	Lovett, 9.800	Hambrick, 9.825	Weaver, 9.825	Flatley, 9.800	49.025
01.13	Gamiao, 9.850	Lovett, 9.825	Swaney, 9.875	Hambrick, 9.725	Weaver, 9.875	Flatley, 9.900	49.325
01.20	Gamiao, 9.875	Lovett, 9.650	Swaney, 9.450	Hambrick, 9.275	Weaver, 9.950	Flatley, 9.900	48.825
01.27	Gamiao, 9.875	Gianfagna, 9.850	Swaney, 9.900	Hambrick, 9.725	Weaver, 9.625	Flatley, 9.900	49.250
02.03	Gamiao, 9.850	Gianfagna, 9.900	Swaney, 9.925	Weaver, 9.875	Hambrick, 9.800	Flatley, 9.050	49.350
02.11	Gamiao, 9.875	Gianfagna, 9.825	Swaney, 9.850	Weaver, 9.875	Hambrick, 9.750	Flatley, 9.900	49.325
02.17							
02.24							
03.03							
03.10							
03.18							

### FLOOR

DATE	1	2	3	4	5	6	TEAM
01.07	Hickey, 9.725	Jones, 9.775	Gamiao, 9.775	Williams, 9.875	Smith, 9.850	Price, 9.875	49.150
01.13	Jones, 9.850	Hickey, 9.850	Lovett, 9.875	Williams, 9.900	Flatley, 9.875	Price, 9.725	49.350
01.20	Jones, 9.800	Hickey, 9.825	Lovett, 9.750	Williams, 9.900	Flatley, 9.900	Price, 9.875	49.300
01.27	Jones, 9.900	Hickey, 9.750	Lovett, 9.900	Smith, 9.950	Williams, 9.925	Price, 9.900	49.575
02.03	Jones, 9.900	Lovett, 9.825	Smith, 9.875	Williams, 9.950	Flatley, 9.800	Price, 9.925	49.475
02.11	Jones, 9.775	Hickey, 9.925	Lovett, 9.875	Smith, 9.875	Williams, 9.600	Price, 9.750	49.200
02.17							
02.24							
03.03							
03.10							
03.18							

## TOP SCORES BY CLASS

### FRESHMAN

VAULT	SCORE	DATE	OPPONENT
GYMNAST			
Michelle Stout	9.950	2/9/07	No. 1 Florida

### UNEVEN BARS

GYMNAST	SCORE	DATE	OPPONENT
Paige Zaziski	9.950	3/13/15	No. 8 UCLA

### BALANCE BEAM

GYMNAST	SCORE	DATE	OPPONENT
Sophia Carter	9.975	1/26/18	No. 10 Georgia
Sophia Carter	9.975	3/2/18	No. 36 Arizona

### FLOOR EXERCISE

GYMNAST	SCORE	DATE	OPPONENT
Bailey Lovett	9.950	1/17/20	No. 3 Denver
Sarah Shaffer	9.950	3/16/18	Arkansas Tri Meet
Sophia Carter	9.950	1/26/18	No. 10 Georgia
Rachel Barnett	9.950	2/6/04	No. 14 LSU
Rachel Barnett	9.950	1/23/04	No. 22 Auburn

### ALL-AROUND

GYMNAST	SCORE	DATE	OPPONENT
Sarah Shaffer	39.500	3/16/18	Arkansas Tri Meet

### SOPHOMORE/R-FRESHMAN

VAULT	SCORE	DATE	OPPONENT
GYMNAST			
Amanda Wellick	9.950	2/13/15	No. 6 Alabama
Amanda Wellick	9.950	1/16/15	Arkansas Tri Meet
Katherine Grable	9.950	1/20/12	No. 25 LSU
Jaime Pisani	9.950	3/6/10	No. 22 Minnesota
Jaime Pisani	9.950	2/5/10	No. 16 Auburn

### UNEVEN BARS

GYMNAST	SCORE	DATE	OPPONENT
Hailey Garner	9.975	3/16/18	Arkansas Tri Meet

### BALANCE BEAM

GYMNAST	SCORE	DATE	OPPONENT
Cami Weaver	9.950	1/20/23	At No. 87 Auburn
Bailey Lovett	9.950	3/5/21	At No. 12 Auburn
Michaela Burton	9.950	1/26/18	No. 10 Georgia
Jessica Yamzon	9.950	1/26/18	No. 10 Georgia
Katherine Grable	9.950	4/21/12	NCAA Championships
Katie Hardman	9.950	3/12/04	At No. 11 Arizona

### FLOOR EXERCISE

GYMNAST	SCORE	DATE	OPPONENT
Leah Smith	9.950	1/27/23	No. 8 LSU
Bailey Lovett	9.950	3/5/21	At No. 12 Auburn
Bailey Lovett	9.950	2/19/21	No. 25 Missouri
Sophia Carter	9.950	3/16/19	Arkansas Quad
Sophia Carter	9.950	2/22/19	No. 5 LSU
Sophia Carter	9.950	2/1/19	No. 6 Georgia
Sophia Carter	9.950	1/5/19	No. 2 Oklahoma
Amanda Wellick	9.950	1/16/15	No. 6 Alabama
Katherine Grable	9.950	2/5/12	No. 8 Oklahoma
Katherine Grable	9.950	2/3/12	No. 13 Auburn
Katherine Grable	9.950	1/20/12	No. 25 LSU
Jaime Pisani	9.950	3/6/10	No. 22 Minnesota

### ALL-AROUND

GYMNAST	SCORE	DATE	OPPONENT
Katherine Grable	39.725	1/20/12	No. 25 LSU

### JUNIOR

VAULT	SCORE	DATE	OPPONENT
GYMNAST			
Kennedy Hambrick	9.975	2/19/21	No. 25 Missouri
Michelle Stout	9.975	4/16/09	NCAA Championships

### UNEVEN BARS

GYMNAST	SCORE	DATE	OPPONENT
Kennedy Hambrick	9.950	4/3/21	Tuscaloosa Regional Final

### BALANCE BEAM

GYMNAST	SCORE	DATE	OPPONENT
Kennedy Hambrick	9.950	2/26/21	No. 7 Alabama
Kennedy Hambrick	9.950	2/19/21	No. 25 Missouri
Michaela Burton	9.950	2/15/19	No. 11 Auburn

### FLOOR EXERCISE

GYMNAST	SCORE	DATE	OPPONENT
Kennedy Hambrick	9.950	2/19/21	No. 25 Missouri
Kennedy Hambrick	9.950	2/12/21	At No. 15 Kentucky
Sophia Carter	9.950	2/28/20	At No. 5 LSU
Sophia Carter	9.950	1/17/20	No. 3 Denver
Amanda Wellick	9.950	2/26/16	No. 23 Kentucky
Katherine Grable	9.950	4/19/13	NCAA Championships
Katherine Grable	9.950	4/6/13	Corvallis Regional
Katherine Grable	9.950	3/1/13	Mizzou Quad
Katherine Grable	9.950	2/1/13	No. 1 Florida
Jaime Pisani	9.950	4/15/11	NCAA Championships
Jaime Pisani	9.950	4/2/11	Denver Regional
Jaime Pisani	9.950	3/4/11	No. 27 West Virginia
Jaime Pisani	9.950	2/27/11	At Illinois-Chicago

### ALL-AROUND

GYMNAST	SCORE	DATE	OPPONENT
Kennedy Hambrick	39.750	2/19/21	No. 25 Missouri

### SENIOR/GRADUATE

VAULT	SCORE	DATE	OPPONENT
GYMNAST			
Katherine Grable	9.975	4/20/14	NCAA Event Finals

### UNEVEN BARS

GYMNAST	SCORE	DATE	OPPONENT
Sarah Shaffer	9.950	3/31/22	Norman Regional
Sarah Shaffer	9.950	3/6/22	Elevate The Stage
Maggie O'Hara	9.950	1/14/22	No. 8 Auburn
Maggie O'Hara	9.950	2/26/21	No. 7 Alabama
Maggie O'Hara	9.950	1/15/21	No. 5 LSU
Braie Speed	9.950	3/16/18	Arkansas Tri Meet
Jaime Pisani	9.950	1/20/12	No. 25 LSU

### BALANCE BEAM

GYMNAST	SCORE	DATE	OPPONENT
Kennedy Hambrick	9.975	2/6/22	No. 58 SEMO

### FLOOR EXERCISE

GYMNAST	SCORE	DATE	OPPONENT
Katherine Grable	9.975	3/14/14	No. 2 Oklahoma
Jaime Pisani	9.975	2/3/12	No. 13 Auburn

### ALL-AROUND

GYMNAST	SCORE	DATE	OPPONENT
Katherine Grable	39.725	2/21/14	No. 31 Kentucky
Jaime Pisani	39.725	2/2/12	No. 13 Auburn



## INDIVIDUAL RECORDS

### VAULT

SCORE	GYMNAST	DATE (LAST)	OPPONENT
9.975	Kennedy Hambrick	2/19/21	No. 25 Missouri
	Katherine Grable	4/20/14	NCAA Event Finals
	Michelle Stout	4/16/09	NCAA Champ.
9.950	Kennedy Hambrick	3/5/21	at No. 12 Auburn
	Amanda Wellick (2x)	2/13/15	Arkansas Tri-Meet
	Heather Elswick	1/16/15	No. 6 Alabama
	Katherine Grable (7x)	4/18/14	NCAA Ev. Semifinals
	Jaime Pisani (3x)	3/16/12	at No. 16 Missouri
	Casey Jo Magee (2x)	3/1/10	No. 2 Oklahoma
	Michelle Stout	2/9/07	No. 1 Florida
9.925	Lauren Williams	1/27/23	No. 8 LSU
	Amanda Elswick	3/13/22	Denver Quad
	Kennedy Hambrick (3x)	3/13/22	Denver Quad
	Savannah Pennese	3/13/22	Denver Quad
	Sarah Shaffer (2x)	3/13/22	Denver Quad
	Braie Speed	2/23/18	at No. 5 Florida
	Amanda Wellick (4x)	4/4/15	Morgantown Regional
	Paige Zaziski	2/6/15	No. 2 Florida

6 additional scores of 9.925 occurred before 2015

### BALANCE BEAM

SCORE	GYMNAST	DATE (LAST)	OPPONENT
9.975	Kennedy Hambrick	2/6/22	No. 58 SEMO
	Sophia Carter (2x)	3/2/18	No. 36 Arizona
9.950	Cami Weaver	1/20/23	at No. 7 Auburn
	Amanda Elswick (2x)	3/4/22	at No. 7 Alabama
	Kennedy Hambrick (3x)	1/14/22	No. 8 Auburn
	Bailey Lovett	3/5/21	at No. 12 Auburn
	Micaela Burton (2x)	2/5/19	at No. 11 Auburn
	Jessica Yamzon	1/26/18	No. 11 Georgia
	Katherine Grable	4/20/12	NCAA Champ. Sess II
	Jaime Pisani (2x)	4/20/12	NCAA Champ. Sess II
	Casey Jo Magee (3x)	3/19/10	No. 2 Oklahoma
	Katie Hardman	3/12/04	at No. 11 Arizona
9.925	Amanda Elswick (2x)	2/20/22	at No. 10 Mizzou w/LSU
	Kennedy Hambrick (6x)	1/28/22	at No. 4 Florida
	Bailey Lovett (2x)	1/28/22	at No. 4 Florida
	Maggie O'Hara (2x)	1/22/21	No. 1 Florida
	Sophia Carter (2x)	2/7/20	No. 10 Georgia
	Hailey Garner (2x)	3/24/18	SEC Championships
	Katherine Grable (7x)	3/14/14	No. 2 Oklahoma
	Jaime Pisani (2x)	4/7/12	NCAA Regional
	Casey Jo Magee (6x)	2/26/10	at No. 23 Washington
	Dana McQuillin	3/5/04	GymBack Invite
9.9125	Kennedy Hambrick	4/16/21	NCAA Championships

### ALL-AROUND

SCORE	GYMNAST	DATE (LAST)	OPPONENT
39.750	Kennedy Hambrick	2/19/21	No. 25 Missouri
39.725	Katherine Grable (2x)	2/22/14	No. 31 Kentucky
	Jaime Pisani	2/3/12	No. 13 Auburn
39.700	Kennedy Hambrick	3/5/21	at No. 12 Auburn
39.675	Katherine Grable	4/5/14	Fayetteville Regional
	Jaime Pisani	3/2/12	No. 18 Minnesota
	Casey Jo Magee	3/19/10	No. 2 Oklahoma
39.650	Katherine Grable	4/6/13	NCAA Regional
	Casey Jo Magee	3/19/10	No. 2 Oklahoma
39.625	Katherine Grable (3x)	3/14/14	No. 2 Oklahoma
	Jaime Pisani (2x)	4/20/12	NCAA Champ. Session II
	Casey Jo Magee (2x)	3/12/10	No. 40 Pittsburgh
39.6125	Kennedy Hambrick	4/16/21	NCAA Championships
39.600	Kennedy Hambrick	2/7/20	No. 10 Georgia
	Amanda Wellick	2/26/16	No. 23 Kentucky
	Katherine Grable	3/1/14	at No. 6 Georgia
	Jaime Pisani (3x)	3/16/12	at No. 16 Missouri
	Casey Jo Magee	4/10/10	NCAA Champ. Session II
39.575	Norah Flatley	1/13/23	No. 8 Alabama
	Kennedy Hambrick	3/31/22	Norman Regional
	Jaime Pisani	1/10/12	No. 25 LSU
39.550	Norah Flatley	1/20/23	at No. 7 Auburn
	Kennedy Hambrick	4/2/21	Tuscaloosa Regional
	Katherine Grable (2x)	2/5/12	No. 5 Oklahoma
	Casey Jo Magee	4/22/10	NCAA Champ. Session II
39.525	Kennedy Hambrick	1/14/22	No. 8 Auburn
	Sarah Shaffer	1/15/21	No. 5 LSU
	Jaime Pisani (4x)	1/3/12	No. 23 Kentucky
	Casey Jo Magee (3x)	2/19/10	No. 11 LSU
	Michelle Stout	3/13/09	at TWU Quad Meet

### UNEVEN BARS

SCORE	GYMNAST	DATE (LAST)	OPPONENT
9.975	Hailey Garner	3/16/18	Arkansas Tri
9.950	Sarah Shaffer (2x)	3/31/22	Norman Regional
	Maggie O'Hara (3x)	1/14/22	No. 8 Auburn
	Kennedy Hambrick (2x)	4/3/21	Tuscaloosa Regional Final
	Braie Speed (2x)	3/16/18	Arkansas Tri
	Emily Peacock	2/24/06	No. 18 Kentucky
	Jaime Pisani	1/20/12	No. 25 LSU
	Paige Zaziski	3/13/15	No. 8 UCLA
9.925	Reese Drotar	2/11/23	Metroplex Challenge
	Norah Flatley	1/27/23	No. 8 LSU
	Kennedy Hambrick (3x)	3/6/22	Elevate the Stage
	Maddie Jones	2/20/22	at No. 10 Mizzou w/LSU
	Sarah Shaffer (2x)	2/6/22	No. 58 SEMO
	Jensen Scalzo (2x)	1/14/22	No. 8 Auburn
	Maggie O'Hara (2x)	4/16/21	NCAA Championships
	Hailey Garner (3x)	3/16/19	Arkansas Quad
	Michaela Burton	3/8/19	Elevate The Stage
	Sydney Laird	3/2/18	vs. Arizona
	Erin Freier	2/26/16	No. 23 Kentucky
	Braie Speed	2/26/16	No. 23 Kentucky
	Paige Zaziski (2x)	2/26/16	No. 23 Kentucky
	Jaime Pisani (2x)	3/2/12	No. 18 Minnesota
	Mariah Howdeshell (4x)	3/2/12	No. 18 Minnesota
	Shelby Salmon	1/27/12	at No. 8 Florida
	Casey Jo Magee	2/5/10	No. 16 Auburn
	Emily Peacock	2/4/05	at No. 4 LSU
	Melissa Leigh (2x)	3/4/04	NCAA Regionals

### FLOOR EXERCISE

SCORE	GYMNAST	DATE (LAST)	OPPONENT
9.975	Katherine Grable	3/14/14	No. 2 Oklahoma
	Jaime Pisani	2/3/12	No. 13 Auburn
9.9625	Katherine Grable	4/20/14	NCAA Event Finals
9.950	Leah Smith	1/27/23	No. 8 LSU
	Kennedy Hambrick (3x)	2/6/22	No. 58 SEMO
	Sophia Carter (9x)	3/20/21	SEC Championships
	Bailey Lovett (3x)	3/5/21	at No. 12 Auburn
	Sarah Shaffer	3/16/18	Arkansas Tri
	Amanda Wellick (2x)	2/26/16	No. 23 Kentucky
	Katherine Grable (13x)	4/18/14	NCAA Ev. Semifinals
	Jaime Pisani (11x)	3/16/12	at No. 16 Missouri
	Casey Jo Magee	3/12/10	No. 40 Pittsburgh
	Rachel Barnett (2x)	2/6/04	No. 14 LSU
9.925	Madison Hickey	2/11/23	Metroplex Challenge
	Lauren Williams	1/27/23	No. 8 LSU
	Sophia Carter (9x)	4/2/21	Tuscaloosa Regional
	Kennedy Hambrick (3x)	2/25/22	No. 26 Georgia
	Bailey Lovett (4x)	4/2/22	Norman Regional Final
	Abby Johnston	2/26/21	No. 7 Alabama
	Sydney McGlone (2x)	3/16/19	Arkansas Quad
	Sarah Shaffer (4x)	2/26/21	No. 7 Alabama
	Samantha Nelson (2x)	1/29/16	No. 9 Auburn
	Amanda Wellick	2/13/15	Arkansas Tri-Meet
	Stephani Canizaro	1/16/15	No. 6 Alabama
	Heather Elswick	1/16/15	No. 6 Alabama
	Katherine Grable (6x)	3/8/14	at No. 9 Nebraska
	Kelci Lewis	2/22/13	No. 4 Alabama
	Jaime Pisani (7x)	4/7/12	Fayetteville Regional
	Casey Jo Magee (3x)	3/19/10	No. 2 Oklahoma
	Samantha Cortez	3/15/08	No. 9 Oklahoma
	Emily Peacock	3/12/06	No. 36 Washington
	Kathy Thompson (2x)	3/5/04	GymBack Invite
	Cassie Drew	3/5/04	GymBack Invite



## TEAM RECORDS

### VAULT

SCORE	DATE	OPPONENT
1. 49.500	3/13/22	Denver Quad
2. 49.450	1/31/14	No. 12 Auburn
	4/21/12	at NCAA Super Six
	4/16/09	at NCAA Championship
	2/20/09	No. 3 Georgia
5. 49.425	2/6/15	No. 2 Florida
	2/22/13	No. 4 Alabama
7. 49.400	2/17/12	at No. 6 Alabama
	1/20/12	No. 25 LSU
9. 49.375	1/16/15	No. 6 Alabama
	2/24/09	No. 9 Nebraska
	3/13/09	at TWU Tri-Meet

### BALANCE BEAM

SCORE	DATE	OPPONENT
1. 49.475	1/28/22	at No. 4 Florida
2. 49.450	4/20/12	NCAA Super Six
3. 49.425	1/26/18	No. 11 Georgia
4. 49.400	2/19/21	No. 25 Missouri
	3/2/18	vs. Arizona
	3/16/07	at No. 23 Arizona St
7. 49.375	3/12/04	No. 11 Arizona
8. 49.350	2/3/23	No. 2 Florida
	1/22/21	No. 1 Florida
	3/16/18	Arkansas Tri
	2/5/10	No. 16 Auburn

### UNEVEN BARS

SCORE	DATE	OPPONENT
1. 49.575	3/2/18	Arizona
2. 49.550	1/14/22	No. 8 Auburn
	3/16/18	Arkansas Tri
	2/26/16	No. 23 Kentucky
5. 49.500	3/6/22	Elevate the Stage
6. 49.450	3/31/22	Norman Regional
	2/9/18	Auburn
	1/20/12	No. 25 LSU
9. 49.425	3/5/21	at No. 12 Auburn
	2/7/20	No. 10 Georgia

### FLOOR EXERCISE

SCORE	DATE	OPPONENT
1. 49.600	1/16/15	No. 6 Alabama
2. 49.575	1/27/23	No. 8 LSU
	2/26/21	No. 7 Alabama
	2/19/21	No. 25 Missouri
5. 49.550	2/6/22	No. 58 SEMO
6. 49.525	1/24/20	No. 13 Kentucky
	3/5/04	GymBack Invite
8. 49.500	1/15/21	No. 5 LSU
9. 49.475	2/3/23	No. 2 Florida
	1/26/18	No. 11 Georgia

### TEAM TOTAL

SCORE	DATE	OPPONENT
1. 197.475	1/27/23	No. 8 LSU
2. 197.425	3/5/21	at No. 12 Auburn
3. 197.400	2/3/23	No. 2 Florida
4. 197.350	2/19/21	No. 25 Missouri
5. 197.300	3/16/18	Arkansas Tri
6. 197.275	3/2/18	Arizona
7. 197.250	4/2/21	NCAA Regionals
	1/22/21	No. 1 Florida
9. 197.225	2/26/16	No. 23 Kentucky
	1/20/12	No. 25 LSU



## BARNHILL ARENA

Barnhill Arena officially closed its doors as a basketball facility on March 3, 1993. Barnhill was reconfigured into the largest volleyball-only arena in time for the 1994 season. It then underwent a second significant face-lift prior to the 2003 season to also become the home of Arkansas gymnastics.

FIRST OPENED .....	1954
FIRST USED FOR GYM .....	2003
GYM CAPACITY .....	7,147
ALL-TIME RECORD .....	77-59-2 (21 seasons)
FIRST MEET DATE .....	January 10, 2003
FIRST RESULT .....	L, 193.000-196.425
FIRST OPPONENT .....	No. 16 Denver
LARGEST CROWD .....	7,147, Jan. 27, 2023
CROWD OPPONENT .....	No. 8 LSU
ORIGINAL NAME .....	Arkansas Fieldhouse



### ATTENDANCE HISTORY

### RECORD AT THE BARN

YEAR	AVG. ATTENDANCE (Rank)	YEAR HOME RECORD	
2003.....	4,739 (4th)	2003.....	0-5
2004.....	4,401 (4th)	2004.....	8-3
2005.....	3,413 (6th)	2005.....	1-5
2006.....	2,474 (11th)	2006.....	3-2
2007.....	2,318 (12th)	2007.....	6-3
2008.....	2,190 (15th)	2008.....	3-2
2009.....	2,587 (10th)	2009.....	4-1
2010.....	2,505 (11th)	2010.....	4-1-1
2011.....	2,384 (11th)	2011.....	4-1
2012.....	3,081 (8th)	2012.....	4-2
2013.....	3,440 (10th)	2013.....	4-3-1
2014.....	3,235 (9th)	2014.....	3-3
2015.....	2,930 (11th)	2015.....	5-4
2016.....	3,427 (9th)	2016.....	3-2
2017.....	3,797 (9th)	2017.....	3-3
2018.....	3,876 (9th)	2018.....	5-1
2019.....	3,057 (16th)	2019.....	3-4
2020.....	5,415 (9th)	2020.....	1-3
2021.....	1,241 (6th)*	2021.....	1-3
2022.....	4,966 (7th)**	2022.....	2-2
2023.....	5,951	2023.....	1-1

\*2021 attendance data skewed due to COVID-19 protocols including limited capacity

\*\*includes 2022 meet at Bud Walton Arena

## BARNHILL ARENA RECORDS

### TEAM VAULT

OPPONENT	DATE	SCORE
1. #9 Alabama	1/14/11	49.500
2. #12 Auburn	1/31/14	49.450
#3 Georgia	2/20/09	
4. #2 Florida	2/6/15	49.425
#4 Alabama	2/22/13	
6. #25 LSU	1/20/12	49.400
7. #6 Alabama	1/16/15	49.375
#9 Nebraska	2/24/12	
9. #25 Missouri	2/19/21	49.350
#18 Minnesota	3/6/09	

### TEAM BARS

OPPONENT	DATE	SCORE
1. Arizona	3/2/18	49.575
2. Arkansas Tri	3/16/18	49.550
#23 Kentucky	2/26/16	
4. #15 Auburn	2/9/18	49.450
#25 LSU	1/20/12	
6. #10 Georgia	2/7/20	49.425
7. #1 Florida	1/22/21	49.375
NCAA Regional	4/5/14	
#18 Minnesota	3/2/12	
10. # LSU	1/27/23	49.350
#3 Denver	1/17/20	
#13 Auburn	2/3/12	

### TEAM BEAM

OPPONENT	DATE	SCORE
1. #11 Georgia	1/26/18	49.425
2. #25 Missouri	2/19/21	49.400
Arizona	3/2/18	
4. #1 Florida	1/22/21	49.350
Arkansas Tri	3/16/18	
#16 Auburn	2/5/10	
7. #8 Alabama	1/13/23	49.325
#26 Georgia	2/25/22	
#5 LSU	1/15/21	
Utah State	3/11/16	
#23 Kentucky	2/26/16	

### TEAM FLOOR

OPPONENT	DATE	SCORE
1. #6 Alabama	1/16/15	49.600
2. #8 LSU	1/27/23	49.575
#7 Alabama	2/26/21	
#25 Missouri	2/19/21	
4. #58 SEMO	2/6/22	49.550
5. GymBack Inv.	3/5/04	49.525
#13 Kentucky	1/24/20	
7. #5 LSU	1/15/21	49.500
8. #11 Georgia	1/26/18	49.475
9. Kentucky	2/21/14	49.450
8. #3 Denver	1/17/20	49.425
#25 LSU	1/20/12	
#14 LSU	2/6/04	
Auburn	1/23/04	

### TEAM HOME HIGH SCORES

OPPONENT	DATE	VAULT	BARS	BEAM	FLOOR	TOTAL
1. #8 LSU	1/27/23	49.300	49.350	49.250	49.575	197.475
2. #25 Missouri	2/19/21	49.350	49.025	49.400	49.575	197.350
3. Arkansas Tri	3/16/18	49.025	49.550	49.350	49.375	197.300
4. #1 Florida	1/22/21	49.150	49.375	49.350	49.375	197.250
5. Arizona	3/2/18	48.975	49.575	49.400	49.325	197.275
6. #23 Kentucky	2/26/16	49.000	49.550	49.325	49.350	197.225
#25 LSU	1/20/12	49.400	49.450	48.950	49.425	197.225
8. #8 Auburn*	1/14/22	49.050	49.550	49.300	49.300	197.200
9. #11 Georgia	1/26/18	49.100	49.175	49.425	49.475	197.175
10. Kentucky	2/21/14	49.250	49.125	49.275	49.450	197.100
#4 Alabama	2/22/13	49.425	49.175	49.150	49.350	197.100

\*2022 Auburn meet held at Bud Walton Arena

### INDIVIDUAL HOME RECORDS

EVENT	ATHLETE	OPPONENT	DATE	SCORE
VAULT	Amanda Wellick	Arkansas Tri-Meet	2/13/15	9.950
	Heather Elswick	#6 Alabama	1/16/15	9.950
	Katherine Grable	#4 Alabama	2/22/13	9.950
BARS	Hailey Garner	Arkansas Tri-Meet	3/16/18	9.975
BEAM	Kennedy Hambrick	#58 SEMO	2/6/22	9.975
	Sophia Carter	Arizona	3/2/18	9.975
	Sophia Carter	#11 Georgia	1/26/18	9.975
FLOOR	Katherine Grable	#2 Oklahoma	3/14/14	9.975
	Jaime Pisani	#13 Auburn	2/3/12	9.975
AA	Kennedy Hambrick	#25 Missouri	2/19/21	39.750

MEET SEVEN VS KENTUCKY FEBRUARY 17, 2023

# JORDYN WIEBER

## FOURTH-YEAR HEAD COACH

Olympic gold medalist Jordyn Wieber was introduced as the head coach of the Arkansas Women's Gymnastics program on Wednesday, April 24, 2019, by Vice Chancellor and Director of Athletics Hunter Yurachek.

During her third season in 2022, Wieber guided the Gymsbacks to their 18th consecutive regional appearance and second straight regional final. The team set a new regional bars record (49.450) and a new regional floor record (49.400). The Hogs finished the year ranked 16th in the country, maintaining the program's 17-year streak in the top 20. All-arounder Kennedy Hambrick and bars specialist Sarah Shaffer both earned individual NCAA Championships berths, extending Wieber's unblemished national appearance streak in each eligible year. Hambrick earned her fifth All-American honor at the event and became the first-ever Gymsback to compete at NCAAs as an individual all-arounder in consecutive years. Arkansas' 196.450 at SEC Championships in 2022 is the third-best in program history and the best finish since Wieber took the program helm.

At SEC Championships, Arkansas finished with their best score in Wieber's tenure, 196.450, and coached Kennedy Hambrick and Sarah Shaffer to All-SEC honors and Kalyxta Gamiao and Leah Smith to SEC All-Freshman Team honors, the most Gymsbacks on the SEC postseason lists since 2018.

Wieber brought her London 2012 and UCLA teammate Kyla Ross on to the staff for the 2022 season, whose beam coaching helped Arkansas reach a new program high of 49.250 on the event. The Gymsbacks also set a new program record on vault of 49.500 and posted three of its best 10 bars scores ever.

Wieber helped bring a long-awaited dream for the Arkansas program to light in 2022 as the team hosted its first-ever meet in Bud Walton Arena. It was attended by 10,345 fans, a new program single meet record, and the second time in the Wieber era that a new record has been set. The team also set new program highs in total attendance (24,830), which ranked seventh-best in the country, and in season tickets with 1,711. Each year since Wieber's arrival, the Gymsbacks have ranked in the top 10 in average attendance.

Wieber has coached three regular-season All-Americans in Sophia Carter (2020), Maggie O'Hara (2021) and Kennedy Hambrick (2020, 2021). The Razorbacks set an all-time team score in 2021 (197.425) and Hambrick became the new all-around score record holder (39.750). Under her guidance in and out of the gym, Arkansas saw its first SEC Scholar-Athlete of the Year in 10 years in 2022 with Bailey Lovett, and the team has set a new streak of three consecutive years with a team GPA of 3.5 or above.

The Gymsbacks earned their first-ever spot in the SEC night session in 2021 and advanced to the NCAA regional final after scoring a post-season program best 197.250 on day one. In total, Arkansas registered fives scores of 197.000 or better in 2021 for the first time in program history. In 2020, the Gymsbacks ranked as high as fourth in the nation on floor and finished the season ninth in the nation. It was against No. 13 Kentucky on Jan. 24 that Arkansas scored a 49.525 on the floor, the second-highest event total in program history.

Headed into 2022, Arkansas held onto the third-longest active streak for meets with a score of 49.000 or higher, coming in with 32 straight meets, behind Alabama (33) and Florida (35). During the 2022 slate, the Gymsbacks extended that streak to 39 meets. In Wieber's first year, Arkansas scored a 49.00 or higher in 14 of 16 events over the course of four home meets, nearly 90 percent of all events. The Razorbacks' success on the floor helped them lock in back-to-back SEC wins against No. 20 Missouri and No. 10 Georgia mid-way through the season. The consecutive wins marked the first time since 2017 that Arkansas won two-straight conference meets and consecutive meets against a ranked opponent.

Arkansas saw six Gymsbacks wrap up the 2020 season ranked in the top 100 by Road to Nationals in at least one event, with four Hogs finishing with multiple top 100 rankings. With Wieber's lead, Arkansas won 27 event titles through 10 meets. Hambrick finished the season with the most individual titles among the Gymsbacks, securing 11 event titles including a team-high four all-around titles.

The first home meet of the Wieber era was held on Jan. 17 against No. 3 Denver, bringing a then-record crowd of 6,714 fans to Barnhill Arena. On Feb. 21, Coach Wieber and her Arkansas squad hosted Auburn for a Women's Empowerment Meet, the first of its kind in NCAA gymnastics and now an annual tradition for the Gymsbacks.

Wieber wrapped up her third season as a volunteer assistant coach at UCLA and her sixth with the program in 2019, assisting the team in a variety of roles during her first three years in Westwood following her Olympic career. Wieber coached the Bruins on floor exercise, an event in which UCLA finished the 2018 and 2019 regular seasons ranked No. 1 in the nation. In 2019, the Bruins recorded scores of 49.5 or better in 11 of 14 meets, averaging a national-best 49.604 on floor. UCLA hit a season-high 49.825 on March 16, which ranks No. 3 all-time in school history, behind five scores of 9.925 or better in that meet, including two perfect 10s. The floor squad also posted marks of 49.775 (March 23) and 49.750 (Feb. 16) over the course of the year, as four Bruins earned regular season All-America honors in the event - Katelyn Ohashi, Kyla Ross, Gracie Kramer and Felicia Hano. At the NCAA Championships on April 19-20, Wieber coached Ross to the individual floor title with a score of 9.950, the program's second in as many years after Ohashi took home the crown in 2018. After winning their semifinal session with a 197.650 (49.6125 in the floor), UCLA finished third overall in the finals.

The 2018 Bruins scored 49.4 or higher in 11 meets and 49.6 or higher in three meets, including a national season-high of 49.775 set Feb. 25. She and her fellow UCLA coaches were named the 2018 West Region Assistant Coaches of the Year, as they helped lead the Bruins to Pac-12, NCAA regional and NCAA national titles.

Wieber, who has been a vocal advocate for safe sport, has won many awards in the past several years, including the Arthur Ashe Courage Award at the ESPYs, the Rising Star Award by the Los Angeles Business Journal, and the Giant Steps A Hero Among Us Award.

A member of the "Fierce Five" United States squad that won team gold at the 2012 Olympics, Wieber was a two-time U.S. all-around champion (2011 and 2012) and the 2011 World all-around champion. Her illustrious elite career included three medals (all-around and team gold, beam bronze) at the 2011 World Championships, four U.S. senior national titles (all-around, bars and floor in 2011 and all-around in 2012). She was also the 2008 U.S. junior all-around, vault and floor exercise champion and the American Cup all-around champion in 2009, 2011 and 2012. She dominated the competition at the 2010 Pacific Rim Championships, winning four gold medals (all-around, uneven bars, floor exercise, team) and one silver (vault). In her first international competition at the 2007 Junior Pan American Championships, she won gold medals on uneven bars and balance beam, silver in the all-around and bronze on floor exercise. Wieber officially retired from competitive gymnastics in 2015.

Wieber, from DeWitt, Mich., graduated from UCLA in 2017 with a degree in Psychology. She was a 2016 inductee into the Greater Lansing Sports Hall of Fame, a 2021 Michigan Sports Hall of Fame Inductee and is also a member of the USA Gymnastics Hall of Fame.



## GYMBACK ROUTINES/CAREER HIGHS

### REESE DROTAR

#### BARS

Maloney + bail handstand  
Double layout dismount  
CAREER/SEASON HIGH: 9.925/9.925

### NORAH FLATLEY

#### VAULT

Yurchenko full  
CAREER/SEASON HIGH: 9.900/9.900

#### BARS

Higgins + Jaeger  
Bail handstand  
Double layout dismount  
CAREER/SEASON HIGH: 9.975 (UCLA)/9.925

#### BEAM

Front aerial + back handspring + back layout stepout  
Leg up full turn + split jump + beat jump  
Back handspring + layout 1.5 dismount  
CAREER/SEASON HIGH: 9.950 (UCLA)/9.900

#### FLOOR

Triple full  
Front handspring + front double full  
Switch ring + switch half  
1.5 + front layout  
CAREER/SEASON HIGH: 9.975 (UCLA)/9.900

#### ALL-AROUND

CAREER/SEASON HIGH: 39.750 (UCLA)/39.575

### KALYXTA GAMIAO

#### BEAM

Back layout stepout + layout stepout  
Side somi  
Switch leap + split jump  
Full turn  
Round off 1.5 dismount  
CAREER/SEASON HIGH: 9.875/9.875

#### FLOOR

Double pike  
1.5 + round-off back handspring + double full  
Tour jete half + split full  
Double tuck  
CAREER/SEASON HIGH: 9.775/9.775

### KIARA GIANFAGNA

#### BARS

Ray + overshoot  
Full-twisting double back dismount  
CAREER/SEASON HIGH: 9.875/--

#### BEAM

Back handspring + layout stepout  
Full turn  
Kick-over front + beat jump  
Beat jump + straddle half  
Round-off layout 1.5 dismount  
CAREER/SEASON HIGH: 9.900/9.900

### KENNEDY HAMBRICK

#### VAULT

Yurchenko 1.5  
CAREER/SEASON HIGH: 9.975/--

#### BARS

Blind change + Jaeger + overshoot  
Full twisting double back dismount  
CAREER/SEASON HIGH: 9.950/9.100

#### BEAM

Full turn  
Back handspring + layout stepout  
Switch leap + switch half  
Beat jump + straddle 3/4  
Cartwheel Gainer full dismount  
CAREER/SEASON HIGH: 9.975/9.825

#### FLOOR

Double tuck  
Back layout 1.5 + front layout  
Switch half + Popa  
Double pike  
CAREER/SEASON HIGH: 9.975/--

#### ALL-AROUND

CAREER/SEASON HIGH: 39.750/--

### MADISON HICKEY

#### VAULT

Yurchenko full  
CAREER/SEASON HIGH: 9.875/--

#### FLOOR

Double pike  
Switch side + Popa  
Back layout 1.5 + front layout  
Double tuck  
CAREER/SEASON HIGH: 9.925/9.925

### MADDIE JONES

#### BARS

Blind change + Jaeger  
Pak salto  
Half pirouette  
Double layout dismount  
CAREER/SEASON HIGH: 9.925/9.900

#### FLOOR

Front double full  
Back layout 1.5 + front layout  
Switch ring leap + switch leap half  
Rudi  
CAREER/SEASON HIGH: 9.925/9.900

### EMMA KELLEY

#### VAULT

Yurchenko full  
CAREER/SEASON HIGH: 9.800/9.750

#### BARS

Maloney + bail handstand  
Full-twisting double back dismount  
CAREER/SEASON HIGH: 9.650/--

#### FLOOR

Full in  
Switch leap + wolf full + wolf full  
1.5 + front full  
CAREER/SEASON HIGH: 9.050/--

### BAILEY LOVETT

#### BEAM

Free leap mount  
Full turn  
Front aerial + back layout stepout  
Switch leap + split jump + beat jump  
Tuck Gainer full dismount  
CAREER/SEASON HIGH: 9.950/9.825

#### FLOOR

Double layout  
Double tuck  
Switch half + Popa  
Front layout + front layout full  
CAREER/SEASON HIGH: 9.950/9.900

## GYMBACK ROUTINES/CAREER HIGHS

### JAIME PRATT

#### BARS

Ray  
Bail handstand  
Double layout dismount  
CAREER/SEASON HIGH: 9.850/9.850

#### BEAM

Back handspring + back handspring + layout stepout  
Switch leap + split jump  
Full turn  
Round-off layout 1.5 dismount  
CAREER/SEASON HIGH: --/--

#### FLOOR

Front double full  
1.5 + front layout  
Tour jete half + Popa  
Rudi  
CAREER/SEASON HIGH: --/--

### FRANKIE PRICE

#### VAULT

Yurchenko full  
CAREER/SEASON HIGH: 9.900/9.900

#### FLOOR

Double layout  
1.5 + front pike  
Switch side + Popa  
Double pike  
CAREER/SEASON HIGH: 9.925/9.925

### JENSEN SCALZO

#### BARS

Blind change + Jaeger + overshoot  
Double layout dismount  
CAREER/SEASON HIGH: 9.925/9.900

#### BEAM

Back handspring catch mount  
Back handspring + layout stepout  
Full turn  
Split jump + stag jump  
Round-off + layout 1.5 dismount  
CAREER/SEASON HIGH: --/--

### MAKENZIE SEDLACEK

#### VAULT

Yurchenko 1.5  
CAREER/SEASON HIGH: 9.900/9.850

#### BARS

Maloney + Pak salto  
Maloney half  
Full-twisting double tuck dismount  
CAREER/SEASON HIGH: 9.700/--

#### FLOOR

Full in tuck  
Back layout 1.5 + front layout  
Switch half + Popa  
Double tuck  
CAREER/SEASON HIGH: 9.900/--

### LEAH SMITH

#### VAULT

Yurchenko full  
CAREER/SEASON HIGH: 9.875/9.875

#### BARS

Maloney + Bail Handstand  
Toe-on, toe-off  
Double layout dismount  
CAREER/SEASON HIGH: 9.850/--

#### BEAM

Back handspring catch mount  
Switch leap + straddle 1/4 jump  
Back handspring + layout stepout  
Full turn  
Round-off double full dismount  
CAREER/SEASON HIGH: 9.900/--

#### FLOOR

Pike full in  
Front tuck stepout + round-off back handspring double tuck  
Switch side + Popa  
CAREER/SEASON HIGH: 9.950/--

#### ALL-AROUND

CAREER/SEASON HIGH: 39.425/--

### CALLY SWANEY

#### VAULT

Yurchenko full  
CAREER/SEASON HIGH: --/--

#### BARS

Ray  
Pak salto  
Half pirouette  
Double layout dismount  
CAREER/SEASON HIGH: 9.850/9.850

#### BEAM

Front walkover mount  
Back handspring + layout stepout + layout stepout  
Switch leap + split jump  
Full turn  
Back handspring + layout 1.5 dismount  
CAREER/SEASON HIGH: 9.925/9.925

#### FLOOR

Double pike  
Front layout + front full  
Switch ring + switch half + wolf full  
Rudi  
CAREER/SEASON HIGH: --/--

### CAMI WEAVER

#### VAULT

Yurchenko full  
CAREER/SEASON HIGH: 9.875/9.875

#### BARS

Tkatchev  
Toe-on, toe-off  
Pak salto  
Half pirouette  
Double layout dismount  
CAREER/SEASON HIGH: --/--

#### BEAM

Back handspring + layout stepout + layout stepout  
Switch leap + split jump  
Full turn  
Round-off layout 1.5 dismount  
CAREER/SEASON HIGH: 9.950/9.950

### LAUREN WILLIAMS

#### VAULT

Yurchenko 1.5  
CAREER/SEASON HIGH: 9.925/9.925

#### BEAM

Back handspring + layout stepout  
Switch leap + straddle 1/4  
Full turn  
Front aerial + beat jump  
Round-off 1.5 dismount  
CAREER/SEASON HIGH: 9.675/9.675

#### FLOOR

Full in  
Back layout 1.5 + front layout  
Switch side + Popa  
Double tuck  
CAREER/SEASON HIGH: 9.950/9.950