

ARKANSAS



15 NCAA REGIONAL APPEARANCES | 2 NATIONAL CHAMPIONS | 46 ALL-AMERICANS

THE SCHEDULE

OVERALL 1-6 | SEC 0-3 | H: 0-1 | A: 1-1 | N: 0-3

DATE	OPPONENT	W/L	LOCATION
JANUARY (1-5)			
5	#2 Oklahoma	L	198.050-195.575
12	#18 Arizona	W	195.800-194.725
18	#16 Kentucky*	L	195.275-193.975
26	Metroplex Challenge		4th of 4
	#1 Oklahoma	L	197.975-195.825
	#7 Denver	L	196.350-195.825
	#15 Missouri*	L	196.200-195.825
FEBRUARY (0-1)			
1	#6 Georgia*	L	197.425-196.125
8	#9 Alabama*		Barnhill Arena
15	#13 Auburn*		Auburn, Ala.
22	#5 LSU*		Barnhill Arena
MARCH (0-0)			
1	#3 Florida*		Barnhill Arena
8	Elevate The Stage		Birmingham, Ala.
	#6 Georgia		
	Minnesota		
	Michigan State		
16	Arkansas Quad		Barnhill Arena
	Texas Woman's		
	Lindenwood		
	SEMO		
23	SEC Championship		New Orleans
APRIL (0-0)			
4-6	NCAA Regionals		TBD
19-20	NCAA Championships		TBD

*SEC Meet

MATCHUP COMPARISON

ARKANSAS		ALABAMA	
Ranking	22	Ranking	8
2018 NCAA Finish	10	2018 Finish	8
SEC Finish	5	SEC Finish	2
Home Record	0-1	Road Record	2-0
Overall Record	1-6	Overall Record	7-2
Vault Ranking	13	Vault Ranking	5
Bars Ranking	34	Bars Ranking	9
Beam Ranking	27	Beam Ranking	24
Floor Ranking	11	Floor Ranking	7
High Score	196.125	High Score	196.900
High Vault	49.250	High Vault	49.275
High Bars	48.925	High Bars	49.250
High Beam	49.100	High Beam	49.250
High Floor	49.275	High Floor	49.375

THE MATCHUP



vs



#24 ARKANSAS RAZORBACKS (1-6)

Head Coach: Mark Cook
 Last Meet: L, at Georgia 197.425-196.125
 Average: 195.269, High: 195.825

#8 ALABAMA CRIMSON TIDE (7-2)

Head Coach: Dana Duckworth
 Last Meet: W, at Missouri 196.850-196.550
 Average: 196.350, High: 196.900

MEET INFORMATION

Date: Feb. 8, 2019 | 7 p.m. CT
Location: Fayetteville, Ark.
TV: SEC Network+
Talent: Josh Haley, Amanda Ward
Stats: Arkansas.Statbroadcast.com
Series Record: Alabama Leads 35-5-1
Note: Arkansas' won two-straight in Barnhill

GYMBACK STORYLINES

AGAINST THE TIDE

The Razorbacks have won three of the last four dual meets against Alabama, including the last two held inside the friendly confines of Barnhill Arena. The Razorbacks fell short of four-straight last season in Tuscaloosa, Ala. 197.000-196.350.

CARTER DOES IT AGAIN

Sophomore Sophia Carter posted a 9.950 on the floor at Georgia last Friday. The Blue Springs, Mo. standout is currently ranked No. 12 nationally on the floor, leading all Razorbacks ranked on any event, with an average of 9.905. Carter has scored three 9.900's or higher on the floor this season, and has now scored three 9.950's on the event in her career. The sophomore has taken four floor titles in five meets this season.

VAULTING HIGHER

The Razorbacks again scored a 49 on vault at Georgia last Friday, scoring a 49.175. Arkansas has scored a 59 or higher in three of five meets this season after posting similar scores just five

PROJECTED LINEUPS



VAULT	SEASON AVG	HIGH
Jessica Yamzon	9.765	9.850
Sarah Shaffer	9.800	9.825
Amanda Elswick	9.806	9.875
Savannah Pennese	9.720	9.775
Kennedy Hambrick	9.820	9.875
Sydney McGlone	9.845	9.875

BARS	SEASON AVG	HIGH
Jessica Yamzon	9.740	9.775
Sophia Carter	9.625	9.700
Kennedy Hambrick	9.333	9.875
Sydney Laird	9.580	9.750
Hailey Garner	9.720	9.825
Sarah Shaffer	9.595	9.825

BEAM	SEASON AVG	HIGH
Jessica Yamzon	9.820	9.875
Kennedy Hambrick	9.819	9.825
Amanda Elswick	8.950	9.550
Sophia Carter	9.795	9.900
Sarah Shaffer	9.517	9.750
Michaela Burton	9.800	9.900

FLOOR	SEASON AVG	HIGH
Jessica Yamzon	9.755	9.825
Kennedy Hambrick	9.785	9.800
Michaela Burton	9.725	9.750
Sydney McGlone	9.790	9.900
Sarah Shaffer	9.850	9.900
Sophia Carter	9.905	9.950

BY THE NUMBERS (AVG)

	49.020	48.570	48.725	49.125	195.440
	VAULT	BARS	BEAM	FLOOR	AVG
	49.165	49.150	48.785	49.205	196.305



ALPHABETICAL ROSTER

NAME	EVENTS	CLASS	Ht.	HOMETOWN	CLUB GYM
Michaela Burton	AA	Junior	5-1	Downers Grove, Ill	Legacy Elite Gymnastics
Sophia Carter	AA	Sophomore	5-2	Blue Springs, Mo.	Great American Gymnastics
Katarina Derrick	AA	Freshman	5-3	Houston, Texas	Pearland Gymnastics
Amanda Elswick	AA	Freshman	5-1	Austin, Texas	Capital Gymnastics
Hailey Garner	UB, BB, FX	Junior	5-1	Memphis, Tenn.	Gymstars Gymnastics
Kailey Gillings	AA	Sophomore	5-4	Beach City, Texas	Stars Gymnastics
Kennedy Hambrick	AA	Freshman	5-2	Pearland, Texas	Reflex Gymnastics
Bailey Lovett	AA	Freshman	5-2	Greensbro, N.C.	Kristie Phillips
Sydney Laird	AA	Sophomore	5-2	Kings Mountain, N.C.	First In Flight Gymnasitcs
Sydney McGlone	VT, BB, FX	Senior	5-1	Dublin, Ohio	Universal Gymnastics
Savannah Pennese	VT, FX	Freshman	5-3	Porter, Texas	Rowland Ballard
Sarah Shaffer	AA	R-Sophomore	5-9	Tyler, Texas	Texas East Gymnastics
Jessica Yamzon	AA	Junior	5-0	Las Vegas, Nev.	Gymcats Gymnastics

BY STATE

ILLINOIS	
Michaela Burton	Downers Grove, Ill.
MISSOURI	
Sophia Carter	Blue Springs, Mo.
NEVADA	
Jessica Yamzon	Las Vegas, Nev.
NORTH CAROLINA	
Sydney Laird	Kings Mountain, N.C.
Bailey Lovett	Greensboro, N.C.

COACHING & SUPPORT STAFF

TITLE	NAME	EXPERIENCE	ALMA MATER
Head Coach	Mark Cook	17 th Season	Chico State, '77
Associate Head Coach	Jaime Armbrust	5 th Season	Arkansas, '12
Associate Head Coach	Garrett Griffeth	2 nd Season	Georgia, '10
Volunteer Asst. Coach	Courtney (McCool) Griffeth	2 nd Season	Georgia, '11
Director of Operations	Kelci Gatling	4 th Season	Arkansas, '13
Kirby Rathjen	Manager	1 st Season	Arkansas, '18
Amanda Wellick	Manager	1 st Season	Arkansas, '17
Kimberly Hinton	Athletic Trainer	3 rd Season	Virginia Tech, '07

OHIO

Sydney McGlone Dublin, Ohio

TENNESSEE

Hailey Garner Memphis, Tenn.

TEXAS

Katarina Derrick Houston, Texas
 Amanda Elswick Austin, Texas
 Kailey Gillings Beach City, Texas
 Kennedy Hambrick Pearland, Texas
 Savannah Pennese Porter, Texas
 Sarah Shaffer Tyler, Texas

BY CLASS

FRESHMEN (5)

Katarina Derrick Fr.
 Amanda Elswick Fr.
 Kennedy Hambrick Fr.
 Bailey Lovett Fr.
 Savannah Pennese Fr.

SOPHOMORES (4)

Sophia Carter So.
 Kailey Gillings So.
 Sydney Laird So.
 Sarah Shaffer R-So.

JUNIORS (3)

Michaela Burton Jr.
 Hailey Garner Jr.
 Jessica Yamzon Jr.

SENIORS (1)

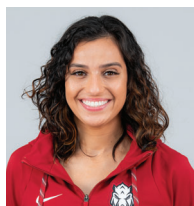
Sydney McGlone Sr.

PRONUNCIATIONS

Katarina Derrick CAT-A-REENA
 Amanda Elswick ELS-WICK
 Hailey Garner GAR-NUR
 Kailey Gillings JILL-INGS
 Bailey Lovett LOVE-EHT
 Savannah Pennese PEN-EASY
 Sarah Shaffer SHAY-FUR
 Jessica Yamzon YAM-ZAHN
 Jaime Armbrust ARM-BRUHST



Michaela Burton
Jr | 5-1 | AA



Sophia Carter
So | 5-2 | AA



Katarina Derrick
Fr | 5-3 | AA



Amanda Elswick
Fr | 5-1 | AA



Hailey Garner
Jr | 5-1 | UB, BB, FX



Kailey Gillings
So | 5-4 | AA



Kennedy Hambrick
Fr | 5-2 | AA



Sydney Laird
So | 5-2 | AA



Bailey Lovett
Fr | 5-2 | AA



Sydney McGlone
Sr | 5-1 | VT, BB, FX



Savannah Pennese
Fr | 5-3 | VT, FX



Sarah Shaffer
So | 5-9 | AA



Jessica Yamzon
Jr | 5-0 | AA



Mark Cook
Head Coach

TOP 25

Road To Nationals Weekly Poll

Bold denotes Arkansas and/or Opponents

RANK	TEAM	AVERAGE
1.	Oklahoma	197.835
2.	Florida	197.625
3.	UCLA	197.570
4.	Utah	197.205
5.	LSU	197.015
6.	Georgia	196.608
7.	Denver	196.563
8.	Alabama	196.305
9.	Boise State	196.238
10.	Michigan	196.190
11.	Oregon State	196.056
12.	Auburn	196.050
13.	Missouri	195.925
14.	California	195.890
15.	Washington	195.875
16.	Nebraska	195.810
17.	Kentucky	195.800
18.	Minnesota	195.775
19.	Arizona State	195.665
20.	Ohio State	195.640
21.	BYU	195.619
22.	Arkansas	195.440
23.	Iowa State	195.400
24.	Stanford	195.310
25.	Arizona	195.300

WEEK-BY-WEEK EVENT RANKINGS (2018)

Week	Team	VT	UB	BB	FX
Preseason	19	--	--	--	--
1/7/19	10	14	18	10	6
1/14/19	14	12	29	10	13
1/21/19	21	16	38	21	14
1/28/19	24	14	38	29	12
2/4/19	22	13	34	27	11
2/11/19	--	--	--	--	--
2/18/19	--	--	--	--	--
2/25/19	--	--	--	--	--
3/4/19	--	--	--	--	--
3/11/19	--	--	--	--	--
3/18/19	--	--	--	--	--
3/25/19	--	--	--	--	--

INDIVIDUAL RANKINGS (Top 100)

Athlete	AA	VT	UB	BB	FX
Michaela Burton	--	--	--	75	--
Sophia Carter	--	--	--	83	12
Katarina Derrick	--	--	--	--	--
Amanda Elswick	--	71	--	--	--
Hailey Garner	--	--	--	--	--
Kailey Gillings	--	--	--	--	--
Kennedy Hambrick	75	54	--	56	--
Sydney Laird	--	--	--	--	--
Bailey Lovett	--	--	--	--	--
Sydney McGlone	--	35	--	--	--
Savannah Pennese	--	--	--	--	--
Sarah Shaffer	59	77	--	--	52
Jessica Yamzon	42	--	--	54	--

SEC STANDINGS

TEAM	RANK	RECORD	SEC	WIN PCT.	AVG	HIGH
Auburn	No. 12	5-0	4-0	1.000	196.050	196.775
Florida	No. 2	3-1	3-0	.750	197.625	198.025
Alabama	No. 8	7-2	2-1	.775	196.305	196.900
LSU	No. 5	3-2	1-2	.600	197.015	197.450
Georgia	No. 6	3-3	1-2	.500	196.608	197.475
Kentucky	No. 17	3-4	1-2	.425	195.810	196.650
Missouri	No. 13	4-5	1-3	.444	195.925	196.550
Arkansas	No. 22	1-6	0-3	.143	195.440	196.125

THIS WEEK IN THE SEC

MATCHUP	TIME (CT)	TV
Auburn at Florida	6 p.m.	SEC Network
Alabama at Arkansas	7 p.m.	SEC Network+
Georgia at Missouri	7 p.m.	SEC Network+
LSU at Kentucky	7:30 p.m.	SEC Network

NOTEBOOK CONTINUED

times all of last year.

ELSWICK DEBUTS 10.0

While four Razorbacks scored 9.825's or higher last week, including a career high-tying 9.850 from junior Jessica Yamzon, vaulter Amanda Elswick debuted what would be the first Yurchenko 1.5 competed at Arkansas. The vault carried a 10.0 start value and earned a score of 9.875 that led the Razorbacks on the event.

HAMBRICK REBOUNDS

After suffering a fall in her first all-around appearance at Kentucky, freshman Kennedy Hambrick scored a 39.350 in the all-around last week, marking the highest all-around score for a Gymback this season.

HAMBRICK CONSISTENT THROUGH TWO

Freshman Kennedy Hambrick competed in three events at Arizona, bringing her season total to five. She has tied for the team lead on vault in each of the first two meets, winning a share of the event title at Arizona. She has scored a 9.800 or higher in 4-of-5 events so far this season.

CARTER REMAINS STEADY

Through two meets, sophomore Sophia Carter has won two floor titles and a beam title. She posted a 9.950 against Oklahoma in week one, and a 9.875 against Arizona in week two on the floor. Last week on beam, the sophomore scored a 9.900, her sixth score of 9.900 or higher on the event in her career.

ELSWICK DEBUTS

Freshman Amanda Elswick made her long awaited debut on vault against Arizona, scoring a 9.825 in her first meet on a Yurchenko full. The Austin, Texas native is expected to upgrade her vault to a 10.0 start value this season.

GOING HIGH ON VAULT

The Razorbacks scored a 49.150 on vault last week. It was just its seventh score of 49.000

or higher on the event in 17 meets while posting four scores of 9.800 or higher. No Razorback scored below a 9.750 on the event last week.

SHAFFER SOLID ON FLOOR

Sarah Shaffer recorded a 9.900 on floor last week against Oklahoma. It's her eighth score of 9.900 or higher in the last 13 meets. The sophomore has scored below a 9.850 just three times in her career.

HAMBRICK MAKES DEBUT

Freshman Kennedy Hambrick made a solid debut on two events last weekend. She scored a 9.825 on vault, which tied for the team lead, and a 9.800 on floor. Her scores were counted in both events as she was the only freshman in the league to score a 9.800 in every event among gymnasts competing in multiple events.

IRON GYMBACK

Junior Jessica Yamzon continued to compete in every event against Oklahoma. The Las Vegas, native has competed in the all-around in every meet at Arkansas.

VAULT | COACH MARK COOK

PROBABLE LINEUP	Jessica Yamzon Yurchenko Layout full (9.95)	Sarah Shaffer Yurchenko Layout 1/2 (9.95)	Amanda Elswick Yurchenko Layout 3/2 (10.0)	Savannah Pennese Yurchenko Layout full (9.95)	Kennedy Hambrick Yurchenko Layout full (9.95) OR Yurchenko Layout 3/2 (10.0)	Sydney McGlone Yurchenko Layout full (9.95)
	Katarina Derrick Yurchenko Layout full (9.95)	Michaela Burton Yurchenko Layout full (9.95)	Kailey Gillings Yurchenko Layout 1/2 (9.95)			
ALTERNATES						

BARS | COACH GARRETT GRIFFETH

PROBABLE LINEUP	Jessica Yamzon Tkachev, Bail Handstand, Full Twisting Double Layout Dismount	Sophia Carter Blind change to Straddled Jaeger, Bail Handstand, Blind full to Double Back Dismount	Sydney Laird Ray, Bail Handstand, Double Layout Dismount	Hailey Garner Blind full to Geinger to immediate bail, Full Twisting Double Back Dismount	Sarah Shaffer Maloney to Bail Handstand, Double Layout Dismount	Kennedy Hambrick Blind change to Pike Jaeger to immediate bail, Full twisting Double Back Dismount
	Bailey Lovett Maloney to Straddled Tkachev, Bail Handstand, Blind to Double Front Dismount	Kailey Gillings Blind change to Straddled Jaeger, Bail Handstand, Blind full to Double Back Dismount	Michaela Burton Maloney to Pak Salto, Double Layout Dismount			
ALTERNATES						

BEAM | COACH JAIME ARMBRUST

PROBABLE LINEUP	Jessica Yamzon Cat leap to switch side 1/4, back handspring back handspring back layout, full turn, kickover front, beat jump to gainer layout full off side	Kennedy Hambrick Back handspring back layout, switch half, side aerial, full turn, straddle jump to straddle 3/4, cartwheel gainer layout full off the side	Amanda Elswick Switch leap to tourjete 1/4, back handspring back layout, full turn, beat jump to front aerial, roundoff double full dismount	Sarah Shaffer Switch leap to straddle jump 1/4, back handspring back layout, split jump 1/2, side aerial, full turn, back handspring tuck 1 1/2 dismount	Sophia Carter Split jump to sheep jump, back handspring back layout, front aerial, full turn, side aerial back layout 1/1 dismount	Michaela Burton Front aerial to beat jump, back handspring back layout, full turn, split jump to sheep jump, gainer layout full off the side
	Sydney McGlone Pike jump to straddle jump 3/4, back handspring back layout, full turn, punch front tuck, gainer pike dismount off the end	Sydney Laird Front walkover mount, side aerial to side aerial, split leap, full turn, beat jump to split jump 3/4, cartwheel gainer layout full off the side	Kailey Gillings Full turn, back handspring back layout back layout, split jump to straddle jump 1/4, roundoff back layout 1 1/2 dismount	Katarina Derrick Back handspring back layout, full turn, kick over front, switch leap to split jump 3/4, gainer layout full off the side	Savannah Pennese Punch front mount, switch leap switch leap, back handspring back layout, full turn, tuck jump 1/1, gainer layout full off the side	Hailey Garner Beat jump to straddle jump 3/4, side aerial back layout, full turn, side aerial back layout 1/1 dismount
ALTERNATES						

FLOOR | COACH COURTNEY MCCOOL GRIFFETH

PROBABLE LINEUP	Jessica Yamzon Double Tuck; Double Pike; Switch Side Popa; Front Lay Front Full	Kennedy Hambrick Double Tuck; Front Lay Front Full; Switch Half Popa; Double Pike	Michaela Burton Double Pike; Switch Half Popa; Double Tuck; Front Full Front Lay	Sydney McGlone Double Pike or Double Layout; Front Full Front Lay; Tour Jete Popa; Double Tuck	Sarah Shaffer Arabian Double Or Double Pike; Double Tuck; Tour Jete Popa; Back 1.5 Front Lay	Sophia Carter Double Tuck; Back 1.5 Front Full; Switch Half Split Full; Double Pike
	Amanda Elswick Arabian Double; Front Full Front Pike; Switch Ring Tour Jete Half; Double Tuck	Savannah Pennese Double Pike; Front Full Front Lay Front Tuck; Switch Side Popa; Double Tuck	Katarina Derrick Double Pike; Double Tuck; Switch Ring Tour Jete Half; Front Lay Front Full	Kailey Gillings Double Pike; Back 1.5 Front Lay; Switch Side Popa; Double Tuck	Sydney Laird Rudi; Tour Jete Ring Half; Switch Half Split Full; Front Lay Front Full	Hailey Garner Double Pike; Wolf 1 1/2; Switch Side Popa; Front Lay Front Full
ALTERNATES						

INSIDE THE SERIES (4-33-1)

DATE	RESULT	SCORE	LOCATION
1/24/03	L	194.575-197.200	Fayetteville, Ark.
3/29/03	L	194.850-197.575	Birmingham, Ala. (SEC)
2/27/04	L	196.450-197.325	Tuscaloosa, Ala.
3/20/04	L	194.825-197.950	Duluth, Ga. (SEC)
2/25/05	L	193.750-194.800	Fayetteville, Ark.
3/26/05	L	195.325-196.700	Duluth, Ga. (SEC)
2/17/06	L	194.175-195.825	Tuscaloosa, Ala.
3/25/06	L	194.650-196.975	Birmingham, Ala. (SEC)
2/16/07	L	194.175-197.000	Fayetteville, Ark.
3/31/07	L	194.550-197.000	Little Rock (SEC)
2/8/08	L	195.950-196.775	Tuscaloosa, Ala.
3/9/08	W	196.425-195.925	Los Angeles
3/29/08	L	194.650-197.325	Duluth, Ga. (SEC)
4/24/08	L	195.825-196.650	Athens, Ga. (NCAA S. II)
1/30/09	W	196.625-196.525	Fayetteville, Ark.
3/21/09	L	195.650-197.300	Nashville, Tenn. (SEC)
4/16/09	L	196.950-197.025	Lincoln, Neb. (NCAA S. II)
4/17/09	L	196.475-197.575	Lincoln, Neb. (Super Six)
1/22/10	L	195.500-197.450	Tuscaloosa, Ala.
3/26/10	L	195.275-196.875	Jacksonville, Fla. (SEC)
4/22/10	L	195.600-196.850	Gainesville, Fla. (NCAA S. II)
1/14/11	L	194.750-194.900	Fayetteville, Ark.
3/19/11	L	195.800-197.225	Birmingham, Ala. (SEC)
2/17/12	L	196.125-197.650	Tuscaloosa, Ala.
3/24/12	L	194.175-196.775	Duluth, Ga. (SEC)
4/20/12	L	197.150-197.675	Duluth, Ga. (NCAA S. II)
4/21/12	L	196.300-197.850	Duluth, Ga. (Super Six)
2/22/13	T	197.100-197.100	Fayetteville, Ark.
3/23/13	L	196.400-197.800	Little Rock (SEC)
4/19/13	L	196.150-197.350	Los Angeles (NCAA S. II)
1/24/14	L	196.100-197.125	Tuscaloosa, Ala.
3/22/14	L	194.900-197.875	Birmingham, Ala. (SEC)
1/16/15	W	196.375-196.175	Fayetteville, Ark.
3/21/15	L	195.950-197.525	Duluth, Ga. (SEC)
1/22/16	W	196.700-196.400	Tuscaloosa, Ala.
3/19/16	L	196.500-197.750	Little Rock (SEC)
1/27/17	W	195.825-195.325	Fayetteville, Ark.
3/18/17	L	197.400-194.900	Jacksonville, Fla. (SEC)
2/2/18	L	196.350-197.000	Tuscaloosa, Ala.
3/24/18	L	196.425-196.975	St. Louis, Mo. (SEC)
4/20/18	L	196.425-196.625	St. Louis, Mo. (NCAA S. I)

THE LAST TIME ARKANSAS...

Scored a 196 or higher at home.....	197.300 at Arkansas Tri (3/16/18)
Scored a 196 or higher on the road.....	196.125 at Georgia (2/1/19)
Scored a 197 or higher at home.....	197.300 at Arkansas Tri (3/16/18)
Scored a 197 or higher on the road.....	197.150 at NCAA Championship Session II (4/20/12)
Scored a 198 or higher.....	Never
Won a home meet.....	vs. Arizona (3/2/18)
Won a road meet.....	At No. 18 Arizona (1/12/19)
Won a neutral site meet.....	NCAA Regional (2009)
Lost a home meet.....	vs. No. 2. Oklahoma (1/5/19)
Lost a road meet.....	at Georgia (2/1/19)
Lost a neutral site meet.....	4th of 4 Metroplex Challenge (2/19/18)
Won a conference meet.....	No. 15 Auburn (2/9/18)
Won a home conference meet.....	No. 15 Auburn (2/9/18)
Won a road conference meet.....	vs. No. 17 Auburn (2/3/17)
Lost a home conference meet.....	vs. No. 6 Kentucky (1/12/18)
Lost a road conference meet.....	at Georgia (2/1/19)
Won the All-Around title.....	Sarah Shaffer 39.150 At No. 18 Arizona (1/12/19)
Won the All-Around title at home.....	Amanda Wellick 39.425 vs. Arizona (3/2/18)
Won the All-Around title on the road.....	Sarah Shaffer 39.150 At No. 18 Arizona (1/12/19)
Won the Vault title.....	Hambrick, McGlone 9.875 At No. 18 Arizona (1/12/19)
Won the Vault title at home.....	Braie Speed 9.900 at Arkansas Tri (3/16/18)
Won the Vault title on the road.....	Hambrick, McGlone 9.875 At No. 18 Arizona (1/12/19)
Won the Beam title.....	Kennedy Hambrick, Michaela Burton at Kentucky (1/19/19)
Won the Beam title at home.....	Sophia Carter 9.975 vs. Arizona (3/2/18)
Won the Beam title on the road.....	Kennedy Hambrick, Michaela Burton at Kentucky (1/19/19)
Won the Bars title.....	Hailey Garner 9.975 at Arkansas Tri (3/16/18)
Won the Bars title at home.....	Hailey Garner 9.975 at Arkansas Tri (3/16/18)
Won the Bars title on the road.....	Paige Zaziski 9.850 at Florida (2015)
Won the Floor title.....	Sophia Carter 9.950 at Georgia (2/1/19)
Won the Floor title at home.....	Sophia Carter 9.950 vs. Oklahoma (1/5/19)
Won the Floor title on the road.....	Sophia Carter 9.950 at Georgia (2/1/19)
Had an All-American.....	4 at 2018 NCAA Championships
Had an NCAA Individual appearance.....	Braie Speed, Jessica Yamzon (2017)

QUICK FACTS

UNIVERSITY INFO

LOCATION.....	Fayetteville, Ark.
FOUNDED.....	1871
ENROLLMENT.....	27,558
NICKNAME.....	Razorbacks
COLORS.....	Cardinal & White
CONFERENCE.....	Southeastern
FACILITY.....	Barnhill Arena
ATHLETIC DIRECTOR.....	Hunter Yurachek
SWA.....	Julie Cromer Peoples
CHANCELLOR.....	Joseph E. Steinmetz
FACULTY ATHLETIC REP.....	Dr. Gerald Jordan
PRESIDENT.....	Donald R. Bobbitt
ATHLETICS WEBSITE.....	ArkansasRazorbacks.com
TICKET OFFICE PHONE.....	479-575-5151

PROGRAM HISTORY

ALL-TIME RECORD.....	196-253-5 (.435)
ALL-TIME SEC RECORD.....	37-63-2 (.362)
2018 OVERALL RECORD.....	12-20-1 (.363)
2018 SEC RECORD FINISH.....	2-5 (.286) 5 TH
BEST NCAA FINISH.....	5th (2009 Super 6)
NCAA REGIONAL APP.....	15 (last in 2018)
NCAA FINALS APP.....	2 (last in 2012)
NCAA INDIVIDUAL CHAMPS.....	2 (both in 2014)
SEC INDIVIDUAL CHAMPS.....	2 (last in 2012)
BEST TEAM SCORE.....	197.300 (2018)
BEST ALL-AROUND SCORE.....	39.725 (2/21/14)
ALL-AMERICAN HONORS.....	46 (last in 2018)

COACHING STAFF

HEAD COACH.....	Mark Cook
ALMA MATER.....	Chico St., 1977
ARKANSAS RECORD.....	196-252-5 (16)
CAREER RECORD.....	264-276-6 (20)
ASSOCIATE HEAD COACH.....	Jaime Armbrust
ALMA MATER.....	Arkansas, 2012
ASSOCIATE HEAD COACH.....	Garrett Griffeth
ALMA MATER.....	Georgia, 2000
VOLUNTEER COACH.....	Courtney (McCool) Griffeth
DIRECTOR OF OPERATIONS.....	Kelci Gatling
TEAM MANAGER.....	Amanda Wellick
ATHLETIC TRAINER.....	Kimberly Hinton

COMMUNICATIONS

CONTACT.....	Devan Lawson
EMAIL ADDRESS.....	gdawson@uark.edu
CELL PHONE.....	501-602-1869

TEAM RECORDS

VAULT

SCORE	DATE	OPPONENT
1. 49.450	1/31/14	No. 12 Auburn
	4/21/12	at NCAA Super Six
	4/16/09	at NCAA Championship
	2/20/09	No. 3 Georgia
5. 49.425	2/6/15	No. 2 Florida
	2/22/13	No. 4 Alabama
7. 49.400	2/17/12	at No. 6 Alabama
	1/20/12	No. 25 LSU
9. 49.375	1/16/15	No. 6 Alabama
	2/24/09	No. 9 Nebraska
	3/13/09	at TWU Tri-Meet

BALANCE BEAM

SCORE	DATE	OPPONENT
1. 49.450	4/20/12	NCAA Super Six
2. 49.425	1/26/18	No. 11 Georgia
3. 49.400	3/2/18	vs. Arizona
	3/16/07	at No. 23 Arizona St
5. 49.375	3/12/04	No. 11 Arizona
6. 49.350	3/16/18	Arkansas Tri
	2/5/10	No. 16 Auburn
8. 49.325	3/11/16	Utah St.
	2/26/16	No. 23 Kentucky
10. 49.300	4/6/13	NCAA Regional
	2/27/04	No. 3 Alabama
12. 49.275	1/26/09	at No. 7 Oklahoma
	4/14/07	NCAA Regional
	3/19/05	GymBack Quad

TEAM TOTAL

SCORE	DATE	OPPONENT
1. 197.300	3/16/18	Arkansas Tri
2. 197.275	3/2/18	vs. Arizona
3. 197.225	2/26/16	No. 23 Kentucky
	1/20/12	No. 25 LSU
5. 197.175	1/26/18	No. 11 Georgia
6. 197.150	4/20/12	NCAA Championship
7. 197.025	2/5/10	No. 16 Auburn
8. 197.100	2/21/14	Kentucky
	2/22/13	No. 4 Alabama
10. 196.950	3/14/14	at No. 2 Oklahoma
	4/6/13	NCAA Regional
	4/16/09	NCAA Championship

UNEVEN BARS

SCORE	DATE	OPPONENT
1. 49.575	3/2/18	vs. Arizona
2. 49.550	3/16/18	Arkansas Tri
	2/26/16	No. 23 Kentucky
4. 49.450	2/9/18	vs. Auburn
	1/20/12	No. 25 LSU
6. 49.400	4/10/10	NCAA Regional
7. 49.375	4/5/14	NCAA Regional
	3/2/12	No. 18 Minnesota
	4/3/04	NCAA Regional
10. 49.375	2/23/18	at No. 5 Florida
11. 49.350	2/3/12	No. 13 Auburn
12. 49.300	1/27/12	at No. 8 Florida
	3/5/04	GymBack Invite

FLOOR EXERCISE

SCORE	DATE	OPPONENT
1. 49.600	1/16/15	No. 6 Alabama
2. 49.525	3/5/04	GymBack Invite
3. 49.475	1/26/18	No. 11 Georgia
4. 49.450	2/21/14	Kentucky
5. 49.425	1/22/16	at No. 4 Alabama
	1/20/12	No. 25 LSU
	2/6/04	No. 14 LSU
	1/23/04	Auburn
9. 49.400	3/1/13	Mizzou Quad
	2/1/13	No. 1 Florida
	1/13/12	No. 23 Kentucky
	3/12/06	Washington



INDIVIDUAL RECORDS

Vault

SCORE	GYMNAST	DATE (LAST)	OPPONENT
1. 9.975	Katherine Grable	4/20/14	NCAA Event Finals
	Michelle Stout	4/16/09	NCAA Champ.
2. 9.950	Amanda Wellick (2x)	2/13/15	Arkansas Tri-Meet
	Heather Elswick	1/16/15	No. 6 Alabama
	Katherine Grable (7x)	4/18/14	NCAA Ev. Semifinals
	Jaime Pisani (3x)	3/16/12	at No. 16 Missouri
	Casey Jo Magee (2x)	3/1/10	No. 2 Oklahoma
	Michelle Stout	2/9/07	No. 1 Florida
3. 9.925	Braie Speed	2/23/18	at No. 5 Florida
	Amanda Wellick (4x)	4/4/15	NCAA Regional
	Paige Zaziski	2/6/15	No. 2 Florida
	Katherine Grable (8x)	3/14/14	No. 2 Oklahoma
	Scarlett Williams	1/31/14	No. 12 Auburn
	Kelci Lewis	2/22/13	No. 4 Alabama
	Jaime Pisani (6x)	2/17/12	at No. 6 Alabama
	Casey Jo Magee (2x)	3/6/10	at No. 22 Minnesota

Balance Beam

SCORE	GYMNAST	DATE (LAST)	OPPONENT
1. 9.975	Sophia Carter (2x)	3/2/18	vs. Arizona
2. 9.950	Micaela Burton	1/26/18	vs. Georgia
	Jessica Yamzon	1/26/18	vs. Georgia
	Katherine Grable	4/20/12	NCAA Champ. Sess II
	Jaime Pisani (2x)	4/20/12	NCAA Champ. Sess II
	Casey Jo Magee (3x)	3/19/10	No. 2 Oklahoma
	Katie Hardman	3/12/04	at No. 11 Arizona
3. 9.925	Hailey Garner (2x)	3/24/18	SEC Championships
	Katherine Grable (7x)	3/14/14	No. 2 Oklahoma
	Jaime Pisani (2x)	4/7/12	NCAA Regional
	Casey Jo Magee (6x)	2/26/10	at Washington
	Dana McQuillin	3/5/04	GymBack Invite
4. 9.900	Sophia Carter (4x)	1/12/19	at Arizona
	Amanda Wellick (5x)	4/7/18	NCAA Columbus Regional
	Michaela Burton (5x)	4/7/18	NCAA Columbus Regional
	Sarah Shaffer (2x)	3/16/18	Arkansas Tri
	Jessica Yamzon	1/19/18	at Missouri
	Hailey Garner	3/3/17	at Kentucky
	Sydney McGlone	1/20/17	Georgia
	Samantha Nelson (2x)	3/19/16	SEC Championship
	Sydney Dillard (2x)	3/7/15	at No. 10 Georgia
	Katherine Grable (7x)	3/22/14	SEC Championship
	Erin Freier (2x)	4/6/13	NCAA Regional

21 additional scores of 9.900 occurred before 2013

All-Around

SCORE	GYMNAST	DATE (LAST)	OPPONENT
1. 39.725	Katherine Grable (2x)	2/22/14	Kentucky
	Jaime Pisani	2/3/12	No. 13 Auburn
3. 39.675	Katherine Grable	4/5/14	NCAA Regional
	Jaime Pisani	3/2/12	No. 18 Minnesota
	Casey Jo Magee	3/19/10	No. 2 Oklahoma
6. 39.650	Katherine Grable	4/6/13	NCAA Regional
	Casey Jo Magee	3/19/10	No. 2 Oklahoma
8. 39.625	Katherine Grable (3x)	3/14/14	No. 2 Oklahoma
	Jaime Pisani (2x)	4/20/12	NCAA Champ. Session II
	Casey Jo Magee (2x)	3/12/10	Pittsburgh
11. 39.600	Amanda Wellick	2/26/16	No. 23 Kentucky
	Katherine Grable	3/1/14	at No. 6 Georgia
	Jaime Pisani (3x)	3/16/12	at No. 16 Missouri
	Casey Jo Magee	4/10/10	NCAA Champ. Session II
15. 39.575	Jaime Pisani	1/10/12	No. 25 LSU
16. 39.550	Katherine Grable (2x)	2/5/12	No. 5 Oklahoma
	Casey Jo Magee	4/22/10	NCAA Champ. Session II
18. 39.525	Jaime Pisani (4x)	1/3/12	No. 23 Kentucky
	Casey Jo Magee (3x)	2/19/10	No. 11 LSU
	Michelle Stout	3/13/09	at TWU Quad Meet

Uneven Bars

SCORE	GYMNAST	DATE (LAST)	OPPONENT
1. 9.975	Hailey Garner	3/16/18	Arkansas Tri
2. 9.950	Braie Speed (2x)	3/16/18	Arkansas Tri
	Emily Peacock	2/24/06	Kentucky
	Jaime Pisani	1/20/12	No. 25 LSU
	Paige Zaziski	3/13/15	No. 8 UCLA
3. 9.925	Hailey Garner (2x)	3/10/17	Arkansas Tri
	Sydney Laird	3/2/18	vs. Arizona
	Erin Freier	2/26/16	No. 23 Kentucky
	Braie Speed	2/26/16	No. 23 Kentucky
	Paige Zaziski (2x)	2/26/16	No. 23 Kentucky
	Jaime Pisani (2x)	3/2/12	No. 18 Minnesota
	Mariah Howdeshell (4x)	3/2/12	No. 18 Minnesota
	Shelby Salmon	1/27/12	at No. 8 Florida
	Casey Jo Magee	2/5/10	No. 16 Auburn
	Emily Peacock	2/4/05	at No. 4 LSU
	Melissa Leigh (2x)	3/4/04	NCAA Regionals

Floor Exercise

SCORE	GYMNAST	DATE (LAST)	OPPONENT
1. 9.975	Katherine Grable	3/14/14	No. 2 Oklahoma
	Jaime Pisani	2/3/12	No. 13 Auburn
2. 9.9625	Katherine Grable	4/20/14	NCAA Event Finals
3. 9.950	Sarah Shaffer (3x)	2/1/19	at No. 6 Georgia
	Sophia Carter	1/26/18	No. 11 Georgia
	Amanda Wellick (2x)	2/26/16	No. 23 Kentucky
	Katherine Grable (13x)	4/18/14	NCAA Ev. Semifinals
	Jaime Pisani (11x)	3/16/12	at No. 16 Missouri
	Casey Jo Magee	3/12/10	Pittsburgh
	Rachel Barnett (2x)	2/6/04	No. 14 LSU
4. 9.925	Sarah Shaffer (2x)	3/2/18	vs. Arizona
	Samantha Nelson (2x)	1/29/16	No. 9 Auburn
	Amanda Wellick	2/13/15	Arkansas Tri-Meet
	Stephani Canizaro	1/16/15	No. 6 Alabama
	Heather Elswick	1/16/15	No. 6 Alabama
	Katherine Grable (6x)	3/8/14	at No. 9 Nebraska
	Kelci Lewis	2/22/13	No. 4 Alabama
	Jaime Pisani (7x)	4/7/12	NCAA Regional
	Casey Jo Magee (3x)	3/19/10	No. 2 Oklahoma
	Samantha Cortez	3/15/08	No. 9 Oklahoma
	Emily Peacock	3/12/06	Washington
	Kathy Thompson (2x)	3/5/04	GymBack Invite
	Cassie Drew	3/5/04	GymBack Invite





Barnhill Arena

Barnhill Arena officially closed its doors as a basketball facility on March 3, 1993. Barnhill was reconfigured into the largest volleyball-only arena in time for the 1994 season. It then underwent a second significant face-lift prior to the 2003 season to also become the home of Arkansas gymnastics.

FIRST OPENED	1954
FIRST USED FOR GYM	2003
GYM CAPACITY	7,296
ALL-TIME RECORD	69-46-2 (16 seasons)
FIRST MEET DATE	January 10, 2003
FIRST RESULT	L, 193.000-196.425
FIRST OPPONENT	No. 16 Denver
LARGEST CROWD	5,537, Jan. 20, 2012
CROWD OPPONENT	No. 25 LSU
ORIGINAL NAME	Arkansas Fieldhouse

ATTENDANCE HISTORY

YEAR	AVG. ATTENDANCE (Rank)
2003	4,739 (4 TH)
2004	4,401 (4 TH)
2005	3,413 (6 TH)
2006	2,474 (11 TH)
2007	2,318 (12 TH)
2008	2,190 (15 TH)
2009	2,587 (10 TH)
2010	2,505 (11 TH)
2011	2,384 (11 TH)
2012	3,081 (8 TH)
2013	3,440 (10 TH)
2014	3,235 (9 TH)
2015	2,930 (11 TH)
2016	3,427 (9 TH)
2017	3,797 (9 TH)
2018	3,876 (9 th)
2019	2,767

RECORD AT THE BARN

YEAR HOME RECORD	RECORD
2003	0-5
2004	8-3
2005	1-5
2006	3-2
2007	6-3
2008	3-2
2009	4-1
2010	4-1-1
2011	4-1
2012	4-2
2013	4-3-1
2014	3-3
2015	5-4
2016	3-2
2017	3-3
2018	5-1
2019	0-1



BARNHILL ARENA RECORDS

TEAM VAULT

OPPONENT	DATE	SCORE
1. #9 Alabama	1/14/11	49.500
2. #12 Auburn	1/31/14	49.450
#3 Georgia	2/20/09	49.450
4. #2 Florida	2/6/15	49.425
#4 Alabama	2/22/13	49.425
6. #25 LSU	1/20/12	49.400
7. #6 Alabama	1/16/15	49.375
#9 Nebraska	2/24/12	49.375
9. #18 Minnesota	3/6/09	49.350
10. #5 Oklahoma	2/5/12	49.325
#1 Florida	1/23/09	49.325

TEAM BARS

OPPONENT	DATE	SCORE
1. Arizona	3/2/18	49.575
2. Arkansas Tri	3/16/18	49.550
#23 Kentucky	2/26/16	49.550
4. #15 Auburn	2/9/18	49.450
#25 LSU	1/20/12	49.450
6. NCAA Regional	4/5/14	49.375
#18 Minnesota	3/2/12	49.375
8. #13 Auburn	2/3/12	49.350
9. Gym'Back Inv.	3/5/04	49.300
10. #13 Kentucky	1/13/12	49.275
Pittsburgh	3/12/10	49.275

TEAM BEAM

OPPONENT	DATE	SCORE
1. #11 Georgia	1/26/18	49.425
2. Arizona	3/2/18	49.400
3. Arkansas Tri	3/16/18	49.350
#16 Auburn	2/5/10	49.350
5. Utah State	3/11/16	49.325
#23 Kentucky	2/26/16	49.325
7. Kentucky	2/21/14	49.275
Arkansas Quad	3/19/05	49.275
9. No. 6 Kentucky	1/12/18	49.250
10. #13 Auburn	2/3/12	49.225
Arkansas Quad	3/23/07	49.225

TEAM FLOOR

OPPONENT	DATE	SCORE
1. #6 Alabama	1/16/15	49.600
2. Gym'Back Inv.	3/5/04	49.525
3. #11 Georgia	1/26/18	49.475
3. Kentucky	2/21/14	49.450
4. #25 LSU	1/20/12	49.425
#14 LSU	2/6/04	49.425
Auburn	1/23/04	49.425
7. Arkansas Quad	3/1/13	49.400
#1 Florida	2/1/13	49.400
#13 Kentucky	1/13/12	49.400
Washington	3/12/06	49.400

TEAM HOME HIGH SCORES

OPPONENT	DATE	VAULT	BARS	BEAM	FLOOR	TOTAL
1. Arkansas Tri	3/16/18	49.025	49.550	49.350	49.375	197.300
2. Arizona	3/2/18	48.975	49.575	49.400	49.325	197.275
3. #23 Kentucky	2/26/16	49.000	49.550	49.325	49.350	197.225
#25 LSU	1/20/12	49.400	49.450	48.950	49.425	197.225
5. #11 Georgia	1/26/18	49.100	49.175	49.425	49.475	197.175
6. Kentucky	2/21/14	49.250	49.125	49.275	49.450	197.100
#4 Alabama	2/22/13	49.425	49.175	49.150	49.350	197.100
8. #16 Auburn	2/5/10	49.300	49.250	49.350	49.125	197.025
9. Pittsburgh	3/12/10	49.175	49.275	49.050	49.375	196.875
10. NCAA Regionals	4/7/12	49.200	49.225	49.175	49.225	196.825

INDIVIDUAL HOME RECORDS

EVENT	ATHLETE	OPPONENT	DATE	SCORE
VAULT	Amanda Wellick	Arkansas Tri-Meet	2/13/15	9.950
	Heather Elswick	#6 Alabama	1/16/15	9.950
	Katherine Grable	#4 Alabama	2/22/13	9.950
BARS	Hailey Garner	Arkansas Tri-Meet	3/16/18	9.975
BEAM	Sophia Carter	Arizona	3/2/18	9.975
	Sophia Carter	#11 Georgia	1/26/18	9.975
FLOOR	Katherine Grable	#2 Oklahoma	3/14/14	9.975
	Jaime Pisani	#13 Auburn	2/3/12	9.975
AA	Katherine Grable	Kentucky	2/21/14	39.725
	Jaime Pisani	#13 Auburn	2/3/12	39.725



MARK COOK HEAD COACH, 17TH SEASON

Mark Cook has guided the Razorbacks from their infancy through their first 16 years of existence and built one of the more dominant programs in the nation. Cook and Arkansas marked their 12-year anniversary in 2014 and celebrated the program's first NCAA Individual Champion, as Katherine Grable collected the NCAA title in both vault and floor exercise. In 2015, Cook led the Razorbacks to their 12th-consecutive NCAA Regional appearance and 10th-consecutive top-15 finish.

A three-time SEC Coach of the Year, Cook has led Arkansas to 15 straight NCAA Regional appearances from 2004-17. Those include eight NCAA Championship appearances, including six straight from 2008-13, and NCAA Super Six appearances in 2009 and 2012.

He has coached two individual national champions at Arkansas, Katherine Grable on the vault and floor in 2014, in addition to 24 First Team All-Americans, 22 Second Team All-Americans and eight NACGC/W Regular Season All-Americans. He has also coached two SEC individual champions, Casey Jo Magee on beam in 2009 and Jaime Pisani on beam in 2012, and two SEC Gymnasts of the Year, Jaime Pisani in 2012 and Katherine Grable in 2014.

Cook came to Arkansas in May 2001 to build the Razorback program from scratch. He was consulted on the construction of one of the top practice facilities in the nation. He selected, ordered and assembled equipment; and helped fans and Northwest Arkansas quickly accept and learn about his sport. He was also scouting, recruiting and signing the first recruiting class in school history.

Cook was the head coach at Stanford University for four seasons (1998-2001), leading the Cardinal to two Pac-10 titles, four NCAA Regional appearances, two NCAA top-10 finishes, and produced several individual and team records which still stand. He coached the program's first individual national champion, Larissa Fontaine on vault. During his tenure, Stanford finished as high as eighth in the nation (2001).

Prior to Stanford, Cook helped build NCAA and Pac-10 champions at UCLA as an assistant coach from 1995-97. During Cook's three years at UCLA, the Bruins won two Pac-10 titles, three NCAA Regional championships and their first NCAA Championship (1997). Cook's work led to UCLA moving from fourth at NAAs the season he arrived in 1995 to national runner-up in 1996 before taking the team title in 1997.

QUICK HITS

- 264-279-6 (.485) in 20 years as head coach
- 196-258 (.435) in 17 years at Arkansas
- Three-time SEC Coach of the Year, 08, 16, 18
- NACGC/W South Central Region Coach of the Year, 2009
- 3 NCAA Individual Champions (Katherine Grable, VT and FX in 2014, Larissa Fontaine VT -Stanford)
- 15 NCAA Regional Appearances, 2004-2017
- 2 NCAA Regional Titles, 2009, 2011
- 8 NCAA Championship Appearances, 06, 08-13, 18
- 2 NCAA Super Six Appearances, 2009, 2012
- 1 SEC Regular-Season Co-Championship, 2011
- 18 NCAA Individual Event Finalists
- 24 First Team All-Americans
- 22 Second Team All-Americans
- 8 NACGC/W Regular Season All-Americans
- 13 NCAA Individual Regional Champions
- 29 All-SEC Team Selections

RECORD AT ARKANSAS

YEAR	TEAM	OVERALL	CONFERENCE FINISH	POSTSEASON	FINAL RANK	SEASON NOTES
1998	Stanford	18-6	First	3rd Regional, NCAA Individuals	No. 15	NCAA Vault Champion
1999	Stanford	15-10-1	Fourth	Regional Champs, 5th Session II	No. 10	--
2000	Stanford	13-10	Sixth	3rd Regional, NCAA Individuals	No. 13	Individual Finals
2001	Stanford	24-7	First	2nd Regional, 4th Session II	No. 8	Best School Finish
2002	Arkansas	(Recruiting)	--	--	--	--
2003	Arkansas	5-15	Seventh	--	--	Inagural Season
2004	Arkansas	11-14	Sixth	4th Regional	No. 20	First Regional
2005	Arkansas	9-16	Fifth	4th Regional, NCAA Individuals	--	First NCAA Individuals
2006	Arkansas	12-21	Sixth	2nd Regional, 5th Session II	No. 12	First Session II
2007	Arkansas	17-16	Fifth	3rd Regional, NCAA Individuals	No. 15	First Winning Season
2008	Arkansas	14-16	Sixth	2nd Regional, 5th Session II	No. 10	First Top-10 Finish
2009	Arkansas	21-14	Sixth	Regional Champs, 5th NCAA	No. 5	Best Arkansas Finish
2010	Arkansas	13-14-1	Sixth	2nd Regional	No. 11	--
2011	Arkansas	16-10-1	Fourth	Regional Champs, 4th session II	No. 10	SEC CO-Champions
2012	Arkansas	18-20	Sixth	2nd Regional, 6th NCAA	No. 6	--
2013	Arkansas	12-18-1	Sixth	2nd Regional, 6th Session II	No. 10	6th Consecutive Session II
2014	Arkansas	9-14	Seventh	3rd Regional, NCAA Individuals	No. 15	NCAA Vault & Floor Champions
2015	Arkansas	9-16	Sixth	4th Regional	No. 14	--
2016	Arkansas	12-12	Sixth	3rd Regional, NCAA Individuals	No. 20	--
2017	Arkansas	7-16-1	Eighth	3rd Regional, NCAA Individuals	No. 19	14th-Consecutive Regional
2018	Arkansas	12-20-1	Fifth	2nd Regional, NCAA Session I	No. 10	Four All-Americans
Total	20 Seasons	264-280-6				

MICHAELA BURTON

UB BB FX

Junior | 5-1

Downers Grove, Ill. | Legacy Elite



- › Tied the previous beam record of 9.950 against Georgia (1/26/18).
- › Competed on bars in all twelve competitions last season.
- › Appeared on beam in 11 of 12 meets in 2017.
- › Will compete in the all-around in 2019 for first time in career.

2018 Stats	VAULT	BARS	BEAM	FLOOR	AA
Oklahoma	9.700	8.200	9.875	9.750	37.525
at Arizona		9.775	9.750	9.725	
at Kentucky		9.600	9.800		
Metroplex Challenge		9.475	9.900	9.725	
at Georgia			9.675	9.700	
Alabama					
At Auburn					
LSU					
Florida					
Elevate The Stage					
Arkansas Quad					
SEC Championship					
NCAA Regionals					
NCAA Championships					

SEASON HIGHS

VAULT9.700 vs. Oklahoma (1/5/19)
 BARS 9.775 at Arizona (1/15/19)
 BEAM9.900 at Metroplex Challenge (1/26/19)
 FLOOR9.750 vs. Oklahoma (1/5/19)
 AA 37.525 vs. Oklahoma (1/5/19)

CAREER HIGHS

VAULT 9.700 vs. Oklahoma (1/5/19)
 BARS 9.850 at Auburn (2/3/17)
 BEAM9.950 vs. Georgia (1/26/18)
 FLOOR 9.875 (4x) last at Florida (2/23/18)
 AA37.525 vs. Oklahoma (1/5/19)

SOPHIA CARTER

AA

Sophomore | 5-2

Blue Springs, Mo. | Great American



- › Was ranked No. 1 in the nation on the floor after one week.
- › SEC Specialist of the Week (1/30/18).
- › Program beam record holder with 9.975 against Georgia (1/26/18)
- › Appeared in all-around for the first time against Florida (2/23/18)

2018 Stats	VAULT	BARS	BEAM	FLOOR	AA
Oklahoma		9.600	9.725	9.950	
at Arizona		9.700	9.900	9.875	
at Kentucky			9.775	9.900	
Metroplex Challenge			9.750	9.850	
at Georgia		9.575	9.825	9.950	
Alabama					
At Auburn					
LSU					
Florida					
Elevate The Stage					
Arkansas Quad					
SEC Championship					
NCAA Regionals					
NCAA Championships					

SEASON HIGHS

BARS 9.700 at Arizona (1/15/19)
 BEAM9.900 at Arizona (1/15/19)
 FLOOR 9.950 (2x) last vs. Georgia (2/1/19)

CAREER HIGHS

VAULT9.700 at Florida (2/23/18)
 BARS 9.825 at Florida (2/23/18)
 BEAM9.975 (2x) last vs. Arizona (3/2/18)
 FLOOR 9.950 (3x) last vs. Georgia (2/1/19)
 AA39.225 at Florida (2/23/18)

AMANDA ELSWICK

AA

Freshman | 5-1

Austin, Texas | Capital



- › Made debut at Arizona with a 9.825 on vault in the third spot.
- › Will compete an upgraded vault this season.
- › Sister of former All-SEC gymnast Heather Elswick.

2018 Stats	VAULT	BARS	BEAM	FLOOR	AA
Oklahoma					
at Arizona	9.825				
at Kentucky	9.650				
Metroplex Challenge	9.875		8.350		
at Georgia	9.875		9.550		
Alabama					
At Auburn					
LSU					
Florida					
Elevate The Stage					
Arkansas Quad					
SEC Championship					
NCAA Regionals					
NCAA Championships					

SEASON HIGHS

VAULT 9.875 (2x) last vs. Georgia (2/1/19)
 BEAM..... 9.550 last vs. Georgia (2/1/19)

CAREER HIGHS

VAULT9.875 (2x) last vs. Georgia (2/1/19)

HAILEY GARNER

AA

Junior | 5-1

Memphis, Tenn | Gymstars



- › Responsible for team's highest score of 2017 with 9.925 on Bars.
- › Program record holder on bars with a 9.975.
- › Earned All-SEC and SEC All Freshman honors on bars in 2017
- › Competed in the all-around for the first time at GymQuarters (2018)

2018 Stats	VAULT	BARS	BEAM	FLOOR	AA
Oklahoma		9.775	9.775		
at Arizona		9.450	9.875		
at Kentucky		9.750	9.025		
Metroplex Challenge		9.825	9.050		
at Georgia		9.800			
Alabama					
At Auburn					
LSU					
Florida					
Elevate The Stage					
Arkansas Quad					
SEC Championship					
NCAA Regionals					
NCAA Championships					

SEASON HIGHS

BARS9.825 at Metroplex Challenge (1/26/19)
 BEAM..... 9.875 at Arizona (1/15/19)

CAREER HIGHS

Vault..... 9.700 vs. Auburn (2/9/18)
 BARS 9.975 vs. Denver, Iowa State (3/16/18)
 BEAM.....9.925 at SEC Championship (3/14/18)
 FLOOR 9.875 (2x) last at Alabama (2/2/18)

KENNEDY HAMBRICK

AA

Freshman | 5-2

Pearland, Texas | Reflex



- › One of seven freshmen to compete in multiple events in the SEC.
- › Of those, the only one to score 9.800 or higher in every event.
- › Tied for team vault lead against Oklahoma.

2018 Stats	VAULT	BARS	BEAM	FLOOR	AA
Oklahoma	9.825			9.800	
at Arizona	9.875		9.825	9.775	
at Kentucky	9.775	8.275	9.800	9.775	37.625
Metroplex Challenge	9.850	9.875	9.825	9.800	39.350
at Georgia	9.775	9.850	9.825	9.775	39.225
Alabama					
At Auburn					
LSU					
Florida					
Elevate The Stage					
Arkansas Quad					
SEC Championship					
NCAA Regionals					
NCAA Championships					

SEASON HIGHS

VAULT 9.875 at Arizona (1/15/19)
 BARS 9.875 at Metroplex Challenge (1/26/19)
 BEAM 9.825 (3x) last vs. Georgia (2/1/19)
 FLOOR 9.800 (2x) last at Metroplex Challenge (1/26/19)
 AA 39.350 at Metroplex Challenge (1/26/19)

CAREER HIGHS

VAULT 9.875 at Arizona (1/15/19)
 BARS 9.875 at Metroplex Challenge (1/26/19)
 BEAM 9.825 (3x) last vs. Georgia (2/1/19)
 FLOOR 9.800 (2x) last at Metroplex Challenge (1/26/19)
 AA 39.350 at Metroplex Challenge (1/26/19)

SYDNEY LAIRD

AA

Sophomore | 5-2

Kings Mountain, NC | First In Flight



- › Competed at Level 10 in the United States and elite in Canada
- › Member of the Canadian National Team

2018 Stats	VAULT	BARS	BEAM	FLOOR	AA
Oklahoma		9.675			
at Arizona		9.700			
at Kentucky		9.075			
Metroplex Challenge		9.700			
at Georgia		9.750			
Alabama					
At Auburn					
LSU					
Florida					
Elevate The Stage					
Arkansas Quad					
SEC Championship					
NCAA Regionals					
NCAA Championships					

SEASON HIGHS

BARS 9.750 last vs. Georgia (2/1/19)

CAREER HIGHS

BARS 9.925 vs. Arizona (3/2/18)
 BEAM 9.875 vs. Arizona (3/2/18)

SYDNEY McGLONE

VT BB FX

Senior | 5-1

Dublin, Ohio | Universal



- › Named team's most outstanding newcomer in 2016.
- › Missed most of last season with an elbow injury.
- › Tied for team lead on vault in return against Oklahoma.

2018 Stats	VAULT	BARS	BEAM	FLOOR	AA
Oklahoma	9.825			9.675	
at Arizona	9.875			9.675	
at Kentucky	9.800			9.800	
Metroplex Challenge	9.875			9.900	
at Georgia	9.850			9.900	
Alabama					
At Auburn					
LSU					
Florida					
Elevate The Stage					
Arkansas Quad					
SEC Championship					
NCAA Regionals					
NCAA Championships					

SEASON HIGHS

VAULT 9.875 (2x) last at Metroplex Challenge (1/26/19)
 FLOOR 9.900 (2x) last vs. Georgia (2/1/19)

CAREER HIGHS

VAULT 9.900 (2x) last vs. Kentucky (1/12/18)
 BEAM 9.900 at Georgia (1/20/17)
 FLOOR 9.900 (5x) last vs. Georgia (2/1/19)

SARAH SHAFER

AA

R-Sophomore | 5-9

Tyler, Texas | Texas East



- › 2018 SEC Freshman of the Year.

2018 Stats	VAULT	BARS	BEAM	FLOOR	AA
Oklahoma	9.750	9.775	9.725	9.900	39.150
at Arizona	9.825	9.750	9.750	9.825	39.150
at Kentucky	9.775	9.775	9.075	9.800	38.425
Metroplex Challenge	9.825	9.825		9.875	
at Georgia	9.825	8.850		9.850	
Alabama					
At Auburn					
LSU					
Florida					
Elevate The Stage					
Arkansas Quad					
SEC Championship					
NCAA Regionals					
NCAA Championships					

SEASON HIGHS

VAULT 9.825 (3x) last vs. Georgia (2/1/19)
 BARS 9.825 at Metroplex Challenge (1/26/19)
 BEAM 9.750 at Arizona (1/12/19)
 FLOOR 9.900 vs. Oklahoma (1/5/19)
 AA 39.150 (2x) last at Arizona (1/12/19)

CAREER HIGHS

VAULT 9.875 (3x) last at Florida (2/23/18)
 BARS 9.900 (2x) last at Florida (2/23/18)
 BEAM 9.900 at Alabama (2/2/18)
 FLOOR 9.925 at Florida (2/23/18)
 AA 39.425 vs. Georgia (1/26/18)

JESSICA YAMZON

AA

Junior | 5-0

Las Vegas, Nev. | Gymcats



- › NCAA All-Around Individual Participant in 2017.
- › The second Arkansas freshman to make NCAA All-Around.
- › Competed in all-around in every meet at Arkansas.
- › Won All-Around and beam title at Missouri (1/19/18)

2018 Stats	VAULT	BARS	BEAM	FLOOR	AA
Oklahoma	9.725	9.775	9.875	9.775	39.150
at Arizona	9.750	9.750	9.750	9.600	38.850
at Kentucky	9.675	9.700	9.775	9.775	38.925
Metroplex Challenge	9.825	9.700	9.875	9.825	39.225
at Georgia	9.850	9.775	9.825	9.800	39.250
Alabama					
At Auburn					
LSU					
Florida					
Elevate The Stage					
Arkansas Quad					
SEC Championship					
NCAA Regionals					
NCAA Championships					

SEASON HIGHS

VAULT9.850 at Georgia (2/1/19)
 BARS 9.775 vs. Oklahoma (1/5/19)
 BEAM.....9.875 (2x) at Metroplex Challenge (1/26/19)
 FLOOR9at Metroplex Challenge (1/26/19)
 AA 39.150 vs. Oklahoma (1/5/19)

CAREER HIGHS

VAULT 9.850 (2x) last at Georgia (2/1/19)
 BARS 9.850 at Florida (2/23/18)
 BEAM.....9.950 vs. Georgia (1/26/18)
 FLOOR 9.900 vs. Arizona (3/2/18)
 AA 39.425 vs. Georgia (1/26/18)

2019 Meet-By-Meet Results

DATE	MEET	TEAMS	RESULT	TEAM SCORE	VAULT	BARS	BEAM	FLOOR	ATTENDANCE
Jan. 5	Oklahoma	No. 12 ARKANSAS No. 2 Oklahoma	L	195.575 198.050	48.825 49.625	48.600 49.475	48.975 49.575	49.175 49.375	2,767
Jan. 12	at Arizona	No. 10 Arkansas No. 18 Arizona	W	195.800 194.725	49.150 48.800	48.675 48.550	49.100 48.675	48.875 48.700	2,759
Jan. 18	at Kentucky	No. 14 Arkansas No. 16 Kentucky	L	193.875 195.275	48.700 49.175	47.900 48.950	48.225 47.775	49.050 49.375	
Jan. 26	Metroplex Challenge	No. 1 Oklahoma No. 7 Denver No. 15 Missouri	4th L L L	195.825 197.975 196.350 196.200	49.250 49.500 49.250 49.275	48.925 49.400 49.225 49.000	48.400 49.500 48.950 48.825	49.250 49.575 48.925 49.100	
Feb. 1	at Georgia	No. 24 Arkansas No. 6 Georgia	L	196.125 197.475	49.175 49.400	48.750 49.275	48.925 49.325	49.275 49.475	10,196
Feb. 8	Alabama								
Feb. 15	at Auburn								
Feb. 22	LSU								
March 8	Elevate The Stage								
March 16	Arkansas Quad								
March 23	SEC Championship								
March 24	SEC Championship								
April 4-6	NCAA Regionals								
April 21	NCAA CHAMPIONSHIPS								

GYMBAK SPEED CHART

	<p>MICHAELA BURTON JR • AA • 5-1 Downers Grove, Ill. • Legacy Elite</p>					<p>CAREER HIGHS</p>	<p>EVENT TITLES</p>	<p>NOTES</p> <ul style="list-style-type: none"> » Made first career all-around appearance against Oklahoma this season. » Competed on beam and floor every meet in 2018. » Appeared on beam in 27-straight meets. 																																								
	<table border="1"> <thead> <tr> <th>2019</th> <th>VAULT</th> <th>BARS</th> <th>BEAM</th> <th>FLOOR</th> <th>AA</th> </tr> </thead> <tbody> <tr> <td>AVG.</td> <td>9.700</td> <td>9.263</td> <td>9.800</td> <td>9.725</td> <td>37.525</td> </tr> <tr> <td>HIGH</td> <td>9.700</td> <td>9.775</td> <td>9.900</td> <td>9.750</td> <td>37.525</td> </tr> </tbody> </table>	2019	VAULT	BARS	BEAM	FLOOR	AA		AVG.	9.700	9.263	9.800	9.725	37.525	HIGH	9.700	9.775	9.900	9.750	37.525	<table border="1"> <thead> <tr> <th>VAULT</th> <th>BARS</th> <th>BEAM</th> <th>FLOOR</th> <th>AA</th> </tr> </thead> <tbody> <tr> <td>9.700</td> <td>9.900</td> <td>9.950</td> <td>9.875 (4x)</td> <td>37.525</td> </tr> </tbody> </table>	VAULT	BARS	BEAM	FLOOR	AA	9.700	9.900	9.950	9.875 (4x)	37.525	<table border="1"> <thead> <tr> <th>EVENT</th> <th>SEASON</th> <th>CAREER</th> </tr> </thead> <tbody> <tr> <td>VAULT</td> <td>--</td> <td>--</td> </tr> <tr> <td>BARS</td> <td>--</td> <td>--</td> </tr> <tr> <td>BEAM</td> <td>1</td> <td>3</td> </tr> <tr> <td>FLOOR</td> <td>--</td> <td>--</td> </tr> <tr> <td>AA:</td> <td>--</td> <td>--</td> </tr> </tbody> </table>	EVENT	SEASON	CAREER	VAULT	--	--	BARS	--	--	BEAM	1	3	FLOOR	--	--	AA:
2019	VAULT	BARS	BEAM	FLOOR	AA																																											
AVG.	9.700	9.263	9.800	9.725	37.525																																											
HIGH	9.700	9.775	9.900	9.750	37.525																																											
VAULT	BARS	BEAM	FLOOR	AA																																												
9.700	9.900	9.950	9.875 (4x)	37.525																																												
EVENT	SEASON	CAREER																																														
VAULT	--	--																																														
BARS	--	--																																														
BEAM	1	3																																														
FLOOR	--	--																																														
AA:	--	--																																														
	<p>SOPHIA CARTER SO • AA • 5-2 Blue Springs, Mo. • Great American</p>					<p>CAREER HIGHS</p>	<p>EVENT TITLES</p>	<p>NOTES</p> <ul style="list-style-type: none"> » Three scores of 9.900 or higher on floor this season. » 9.975 on beam is a program record. » SEC Specialist of the Week (1/30/18). » Only athlete in team history to score a 9.975 twice on the same event. 																																								
	<table border="1"> <thead> <tr> <th>2019</th> <th>VAULT</th> <th>BARS</th> <th>BEAM</th> <th>FLOOR</th> <th>AA</th> </tr> </thead> <tbody> <tr> <td>AVG.</td> <td>--</td> <td>9.625</td> <td>9.795</td> <td>9.905</td> <td>--</td> </tr> <tr> <td>HIGH</td> <td>--</td> <td>9.700</td> <td>9.900</td> <td>9.950</td> <td>--</td> </tr> </tbody> </table>	2019	VAULT	BARS	BEAM	FLOOR	AA		AVG.	--	9.625	9.795	9.905	--	HIGH	--	9.700	9.900	9.950	--	<table border="1"> <thead> <tr> <th>VAULT</th> <th>BARS</th> <th>BEAM</th> <th>FLOOR</th> <th>AA</th> </tr> </thead> <tbody> <tr> <td>9.700</td> <td>9.825</td> <td>9.975 (2x)</td> <td>9.950 (3x)</td> <td>39.225</td> </tr> </tbody> </table>	VAULT	BARS	BEAM	FLOOR	AA	9.700	9.825	9.975 (2x)	9.950 (3x)	39.225	<table border="1"> <thead> <tr> <th>EVENT</th> <th>SEASON</th> <th>CAREER</th> </tr> </thead> <tbody> <tr> <td>VAULT</td> <td>--</td> <td>--</td> </tr> <tr> <td>BARS</td> <td>--</td> <td>--</td> </tr> <tr> <td>BEAM</td> <td>1</td> <td>4</td> </tr> <tr> <td>FLOOR</td> <td>4</td> <td>5</td> </tr> <tr> <td>AA:</td> <td>--</td> <td>--</td> </tr> </tbody> </table>	EVENT	SEASON	CAREER	VAULT	--	--	BARS	--	--	BEAM	1	4	FLOOR	4	5	AA:
2019	VAULT	BARS	BEAM	FLOOR	AA																																											
AVG.	--	9.625	9.795	9.905	--																																											
HIGH	--	9.700	9.900	9.950	--																																											
VAULT	BARS	BEAM	FLOOR	AA																																												
9.700	9.825	9.975 (2x)	9.950 (3x)	39.225																																												
EVENT	SEASON	CAREER																																														
VAULT	--	--																																														
BARS	--	--																																														
BEAM	1	4																																														
FLOOR	4	5																																														
AA:	--	--																																														
	<p>AMANDA ELSWICK FR • AA • 5-1 Austin, Texas • Capital Gymnastics</p>					<p>CAREER HIGHS</p>	<p>EVENT TITLES</p>	<p>NOTES</p> <ul style="list-style-type: none"> » Became the first gymnast in program history to compete a Yurchenck 1.5 with a 10.0 start value at Georgia this season. » Sister of former All-SEC Gymback Heather Elswick. 																																								
	<table border="1"> <thead> <tr> <th>2019</th> <th>VAULT</th> <th>BARS</th> <th>BEAM</th> <th>FLOOR</th> <th>AA</th> </tr> </thead> <tbody> <tr> <td>AVG.</td> <td>9.806</td> <td>--</td> <td>8.950</td> <td>--</td> <td>--</td> </tr> <tr> <td>HIGH</td> <td>9.875</td> <td>--</td> <td>9.550</td> <td>--</td> <td>--</td> </tr> </tbody> </table>	2019	VAULT	BARS	BEAM	FLOOR	AA		AVG.	9.806	--	8.950	--	--	HIGH	9.875	--	9.550	--	--	<table border="1"> <thead> <tr> <th>VAULT</th> <th>BARS</th> <th>BEAM</th> <th>FLOOR</th> <th>AA</th> </tr> </thead> <tbody> <tr> <td>9.875</td> <td>--</td> <td>9.550</td> <td>--</td> <td>--</td> </tr> </tbody> </table>	VAULT	BARS	BEAM	FLOOR	AA	9.875	--	9.550	--	--	<table border="1"> <thead> <tr> <th>EVENT</th> <th>SEASON</th> <th>CAREER</th> </tr> </thead> <tbody> <tr> <td>VAULT</td> <td>--</td> <td>--</td> </tr> <tr> <td>BARS</td> <td>--</td> <td>--</td> </tr> <tr> <td>BEAM</td> <td>--</td> <td>--</td> </tr> <tr> <td>FLOOR</td> <td>--</td> <td>--</td> </tr> <tr> <td>AA:</td> <td>--</td> <td>--</td> </tr> </tbody> </table>	EVENT	SEASON	CAREER	VAULT	--	--	BARS	--	--	BEAM	--	--	FLOOR	--	--	AA:
2019	VAULT	BARS	BEAM	FLOOR	AA																																											
AVG.	9.806	--	8.950	--	--																																											
HIGH	9.875	--	9.550	--	--																																											
VAULT	BARS	BEAM	FLOOR	AA																																												
9.875	--	9.550	--	--																																												
EVENT	SEASON	CAREER																																														
VAULT	--	--																																														
BARS	--	--																																														
BEAM	--	--																																														
FLOOR	--	--																																														
AA:	--	--																																														
	<p>HAILEY GARNER JR • UB, BB, FX • 5-1 Memphis, Tenn. • Gymstars</p>					<p>CAREER HIGHS</p>	<p>EVENT TITLES</p>	<p>NOTES</p> <ul style="list-style-type: none"> » Beam All-American in 2018. » 9.925 at SEC Championships tied Arkansas' highest score ever at the meet. » 9.975 on bars is a program record. 																																								
	<table border="1"> <thead> <tr> <th>2019</th> <th>VAULT</th> <th>BARS</th> <th>BEAM</th> <th>FLOOR</th> <th>AA</th> </tr> </thead> <tbody> <tr> <td>AVG.</td> <td>--</td> <td>9.720</td> <td>9.431</td> <td>--</td> <td>--</td> </tr> <tr> <td>HIGH</td> <td>--</td> <td>9.825</td> <td>9.875</td> <td>--</td> <td>--</td> </tr> </tbody> </table>	2019	VAULT	BARS	BEAM	FLOOR	AA		AVG.	--	9.720	9.431	--	--	HIGH	--	9.825	9.875	--	--	<table border="1"> <thead> <tr> <th>VAULT</th> <th>BARS</th> <th>BEAM</th> <th>FLOOR</th> <th>AA</th> </tr> </thead> <tbody> <tr> <td>9.725</td> <td>9.975</td> <td>9.925 (2x)</td> <td>9.875 (2x)</td> <td>39.175</td> </tr> </tbody> </table>	VAULT	BARS	BEAM	FLOOR	AA	9.725	9.975	9.925 (2x)	9.875 (2x)	39.175	<table border="1"> <thead> <tr> <th>EVENT</th> <th>SEASON</th> <th>CAREER</th> </tr> </thead> <tbody> <tr> <td>VAULT</td> <td>--</td> <td>--</td> </tr> <tr> <td>BARS</td> <td>--</td> <td>4</td> </tr> <tr> <td>BEAM</td> <td>--</td> <td>1</td> </tr> <tr> <td>FLOOR</td> <td>--</td> <td>--</td> </tr> <tr> <td>AA:</td> <td>--</td> <td>--</td> </tr> </tbody> </table>	EVENT	SEASON	CAREER	VAULT	--	--	BARS	--	4	BEAM	--	1	FLOOR	--	--	AA:
2019	VAULT	BARS	BEAM	FLOOR	AA																																											
AVG.	--	9.720	9.431	--	--																																											
HIGH	--	9.825	9.875	--	--																																											
VAULT	BARS	BEAM	FLOOR	AA																																												
9.725	9.975	9.925 (2x)	9.875 (2x)	39.175																																												
EVENT	SEASON	CAREER																																														
VAULT	--	--																																														
BARS	--	4																																														
BEAM	--	1																																														
FLOOR	--	--																																														
AA:	--	--																																														
	<p>KENNEDY HAMBRICK FR • AA • 5-3 Pearland, Texas • Reflex Gymnastics</p>					<p>CAREER HIGHS</p>	<p>EVENT TITLES</p>	<p>NOTES</p> <ul style="list-style-type: none"> » One of seven freshmen in the SEC to compete on multiple events in week one. » Of those, the only freshman to score a 9.800 or higher on every event. » 9.825 on vault tied for a team lead on the event against Oklahoma. » Scorer on both events week one. 																																								
	<table border="1"> <thead> <tr> <th>2019</th> <th>VAULT</th> <th>BARS</th> <th>BEAM</th> <th>FLOOR</th> <th>AA</th> </tr> </thead> <tbody> <tr> <td>AVG.</td> <td>9.820</td> <td>9.333</td> <td>9.819</td> <td>9.785</td> <td>38.733</td> </tr> <tr> <td>HIGH</td> <td>9.875</td> <td>9.875</td> <td>9.825</td> <td>9.800</td> <td>39.350</td> </tr> </tbody> </table>	2019	VAULT	BARS	BEAM	FLOOR	AA		AVG.	9.820	9.333	9.819	9.785	38.733	HIGH	9.875	9.875	9.825	9.800	39.350	<table border="1"> <thead> <tr> <th>VAULT</th> <th>BARS</th> <th>BEAM</th> <th>FLOOR</th> <th>AA</th> </tr> </thead> <tbody> <tr> <td>9.875</td> <td>8.275</td> <td>9.825</td> <td>9.800</td> <td>37.625</td> </tr> </tbody> </table>	VAULT	BARS	BEAM	FLOOR	AA	9.875	8.275	9.825	9.800	37.625	<table border="1"> <thead> <tr> <th>EVENT</th> <th>SEASON</th> <th>CAREER</th> </tr> </thead> <tbody> <tr> <td>VAULT</td> <td>1</td> <td>1</td> </tr> <tr> <td>BARS</td> <td>--</td> <td>--</td> </tr> <tr> <td>BEAM</td> <td>1</td> <td>1</td> </tr> <tr> <td>FLOOR</td> <td>--</td> <td>--</td> </tr> <tr> <td>AA:</td> <td>--</td> <td>--</td> </tr> </tbody> </table>	EVENT	SEASON	CAREER	VAULT	1	1	BARS	--	--	BEAM	1	1	FLOOR	--	--	AA:
2019	VAULT	BARS	BEAM	FLOOR	AA																																											
AVG.	9.820	9.333	9.819	9.785	38.733																																											
HIGH	9.875	9.875	9.825	9.800	39.350																																											
VAULT	BARS	BEAM	FLOOR	AA																																												
9.875	8.275	9.825	9.800	37.625																																												
EVENT	SEASON	CAREER																																														
VAULT	1	1																																														
BARS	--	--																																														
BEAM	1	1																																														
FLOOR	--	--																																														
AA:	--	--																																														
	<p>SYDNEY LAIRD SO • UB, BB • 5-2 Kings Mountain, N.C. • First in Flight</p>					<p>CAREER HIGHS</p>	<p>EVENT TITLES</p>	<p>NOTES</p> <ul style="list-style-type: none"> » All-SEC, All-Freshman team in 2018. » Competed on bars in every meet. 																																								
	<table border="1"> <thead> <tr> <th>2019</th> <th>VAULT</th> <th>BARS</th> <th>BEAM</th> <th>FLOOR</th> <th>AA</th> </tr> </thead> <tbody> <tr> <td>AVG.</td> <td>--</td> <td>9.580</td> <td>--</td> <td>--</td> <td>--</td> </tr> <tr> <td>HIGH</td> <td>--</td> <td>9.750</td> <td>--</td> <td>--</td> <td>--</td> </tr> </tbody> </table>	2019	VAULT	BARS	BEAM	FLOOR	AA		AVG.	--	9.580	--	--	--	HIGH	--	9.750	--	--	--	<table border="1"> <thead> <tr> <th>VAULT</th> <th>BARS</th> <th>BEAM</th> <th>FLOOR</th> <th>AA</th> </tr> </thead> <tbody> <tr> <td>--</td> <td>9.925</td> <td>9.875</td> <td>--</td> <td>--</td> </tr> </tbody> </table>	VAULT	BARS	BEAM	FLOOR	AA	--	9.925	9.875	--	--	<table border="1"> <thead> <tr> <th>EVENT</th> <th>SEASON</th> <th>CAREER</th> </tr> </thead> <tbody> <tr> <td>VAULT</td> <td>--</td> <td>--</td> </tr> <tr> <td>BARS</td> <td>--</td> <td>--</td> </tr> <tr> <td>BEAM</td> <td>--</td> <td>--</td> </tr> <tr> <td>FLOOR</td> <td>--</td> <td>--</td> </tr> <tr> <td>AA:</td> <td>--</td> <td>--</td> </tr> </tbody> </table>	EVENT	SEASON	CAREER	VAULT	--	--	BARS	--	--	BEAM	--	--	FLOOR	--	--	AA:
2019	VAULT	BARS	BEAM	FLOOR	AA																																											
AVG.	--	9.580	--	--	--																																											
HIGH	--	9.750	--	--	--																																											
VAULT	BARS	BEAM	FLOOR	AA																																												
--	9.925	9.875	--	--																																												
EVENT	SEASON	CAREER																																														
VAULT	--	--																																														
BARS	--	--																																														
BEAM	--	--																																														
FLOOR	--	--																																														
AA:	--	--																																														
	<p>SYDNEY MCGLONE SR • VT, BB, FX • 5-1 Dublin, Ohio • Universal Gymnastics</p>					<p>CAREER HIGHS</p>	<p>EVENT TITLES</p>	<p>NOTES</p> <ul style="list-style-type: none"> » Returned from 2018 season ending injury against Oklahoma. » Made first appearance on floor since 2017 against Oklahoma. » Tied for team lead on vault in week one. » Missed most of 2018 with elbow injury. » Hogs most outstanding newcomer in '16 																																								
	<table border="1"> <thead> <tr> <th>2019</th> <th>VAULT</th> <th>BARS</th> <th>BEAM</th> <th>FLOOR</th> <th>AA</th> </tr> </thead> <tbody> <tr> <td>AVG.</td> <td>9.845</td> <td>--</td> <td>--</td> <td>9.790</td> <td>--</td> </tr> <tr> <td>HIGH</td> <td>9.875</td> <td>--</td> <td>--</td> <td>9.900</td> <td>--</td> </tr> </tbody> </table>	2019	VAULT	BARS	BEAM	FLOOR	AA		AVG.	9.845	--	--	9.790	--	HIGH	9.875	--	--	9.900	--	<table border="1"> <thead> <tr> <th>VAULT</th> <th>BARS</th> <th>BEAM</th> <th>FLOOR</th> <th>AA</th> </tr> </thead> <tbody> <tr> <td>9.900</td> <td>--</td> <td>9.900</td> <td>9.900 (4x)</td> <td>--</td> </tr> </tbody> </table>	VAULT	BARS	BEAM	FLOOR	AA	9.900	--	9.900	9.900 (4x)	--	<table border="1"> <thead> <tr> <th>EVENT</th> <th>SEASON</th> <th>CAREER</th> </tr> </thead> <tbody> <tr> <td>VAULT</td> <td>1</td> <td>3</td> </tr> <tr> <td>BARS</td> <td>--</td> <td>--</td> </tr> <tr> <td>BEAM</td> <td>--</td> <td>1</td> </tr> <tr> <td>FLOOR</td> <td>--</td> <td>1</td> </tr> <tr> <td>AA:</td> <td>--</td> <td>--</td> </tr> </tbody> </table>	EVENT	SEASON	CAREER	VAULT	1	3	BARS	--	--	BEAM	--	1	FLOOR	--	1	AA:
2019	VAULT	BARS	BEAM	FLOOR	AA																																											
AVG.	9.845	--	--	9.790	--																																											
HIGH	9.875	--	--	9.900	--																																											
VAULT	BARS	BEAM	FLOOR	AA																																												
9.900	--	9.900	9.900 (4x)	--																																												
EVENT	SEASON	CAREER																																														
VAULT	1	3																																														
BARS	--	--																																														
BEAM	--	1																																														
FLOOR	--	1																																														
AA:	--	--																																														
	<p>SARAH SHAFFER R-SO • AA • 5-9 Tyler, Texas • Texas East</p>					<p>CAREER HIGHS</p>	<p>EVENT TITLES</p>	<p>NOTES</p> <ul style="list-style-type: none"> » 2018 SEC Freshman of the Year. » 3x SEC Freshman of the Week. » All-SEC, All-Freshman team in 2018. 																																								
	<table border="1"> <thead> <tr> <th>2019</th> <th>VAULT</th> <th>BARS</th> <th>BEAM</th> <th>FLOOR</th> <th>AA</th> </tr> </thead> <tbody> <tr> <td>AVG.</td> <td>9.800</td> <td>9.595</td> <td>9.517</td> <td>9.850</td> <td>38.908</td> </tr> <tr> <td>HIGH</td> <td>9.825</td> <td>9.825</td> <td>9.750</td> <td>9.900</td> <td>39.150</td> </tr> </tbody> </table>	2019	VAULT	BARS	BEAM	FLOOR	AA		AVG.	9.800	9.595	9.517	9.850	38.908	HIGH	9.825	9.825	9.750	9.900	39.150	<table border="1"> <thead> <tr> <th>VAULT</th> <th>BARS</th> <th>BEAM</th> <th>FLOOR</th> <th>AA</th> </tr> </thead> <tbody> <tr> <td>9.875</td> <td>9.900</td> <td>9.900</td> <td>9.950</td> <td>39.425</td> </tr> </tbody> </table>	VAULT	BARS	BEAM	FLOOR	AA	9.875	9.900	9.900	9.950	39.425	<table border="1"> <thead> <tr> <th>EVENT</th> <th>SEASON</th> <th>CAREER</th> </tr> </thead> <tbody> <tr> <td>VAULT</td> <td>--</td> <td>1</td> </tr> <tr> <td>BARS</td> <td>--</td> <td>1</td> </tr> <tr> <td>BEAM</td> <td>--</td> <td>--</td> </tr> <tr> <td>FLOOR</td> <td>--</td> <td>2</td> </tr> <tr> <td>AA:</td> <td>1</td> <td>3</td> </tr> </tbody> </table>	EVENT	SEASON	CAREER	VAULT	--	1	BARS	--	1	BEAM	--	--	FLOOR	--	2	AA:
2019	VAULT	BARS	BEAM	FLOOR	AA																																											
AVG.	9.800	9.595	9.517	9.850	38.908																																											
HIGH	9.825	9.825	9.750	9.900	39.150																																											
VAULT	BARS	BEAM	FLOOR	AA																																												
9.875	9.900	9.900	9.950	39.425																																												
EVENT	SEASON	CAREER																																														
VAULT	--	1																																														
BARS	--	1																																														
BEAM	--	--																																														
FLOOR	--	2																																														
AA:	1	3																																														
	<p>JESSICA YAMZON JR • AA • 5-0 Las Vegas, Nev. • Gymcats</p>					<p>CAREER HIGHS</p>	<p>EVENT TITLES</p>	<p>NOTES</p> <ul style="list-style-type: none"> » Competed in AA in every meet » NCAA Indv. Qualifier in 2017 » SEC All-Freshman team in 2017 » Seven career event titles. 																																								
	<table border="1"> <thead> <tr> <th>2019</th> <th>VAULT</th> <th>BARS</th> <th>BEAM</th> <th>FLOOR</th> <th>AA</th> </tr> </thead> <tbody> <tr> <td>AVG.</td> <td>9.765</td> <td>9.740</td> <td>9.820</td> <td>9.755</td> <td>39.080</td> </tr> <tr> <td>HIGH</td> <td>9.850</td> <td>9.775</td> <td>9.875</td> <td>9.825</td> <td>39.250</td> </tr> </tbody> </table>	2019	VAULT	BARS	BEAM	FLOOR	AA		AVG.	9.765	9.740	9.820	9.755	39.080	HIGH	9.850	9.775	9.875	9.825	39.250	<table border="1"> <thead> <tr> <th>VAULT</th> <th>BARS</th> <th>BEAM</th> <th>FLOOR</th> <th>AA</th> </tr> </thead> <tbody> <tr> <td>9.850 (2x)</td> <td>9.900</td> <td>9.900</td> <td>9.950</td> <td>39.425</td> </tr> </tbody> </table>	VAULT	BARS	BEAM	FLOOR	AA	9.850 (2x)	9.900	9.900	9.950	39.425	<table border="1"> <thead> <tr> <th>EVENT</th> <th>SEASON</th> <th>CAREER</th> </tr> </thead> <tbody> <tr> <td>VAULT</td> <td>--</td> <td>--</td> </tr> <tr> <td>BARS</td> <td>--</td> <td>--</td> </tr> <tr> <td>BEAM</td> <td>--</td> <td>2</td> </tr> <tr> <td>FLOOR</td> <td>--</td> <td>--</td> </tr> <tr> <td>AA:</td> <td>--</td> <td>5</td> </tr> </tbody> </table>	EVENT	SEASON	CAREER	VAULT	--	--	BARS	--	--	BEAM	--	2	FLOOR	--	--	AA:
2019	VAULT	BARS	BEAM	FLOOR	AA																																											
AVG.	9.765	9.740	9.820	9.755	39.080																																											
HIGH	9.850	9.775	9.875	9.825	39.250																																											
VAULT	BARS	BEAM	FLOOR	AA																																												
9.850 (2x)	9.900	9.900	9.950	39.425																																												
EVENT	SEASON	CAREER																																														
VAULT	--	--																																														
BARS	--	--																																														
BEAM	--	2																																														
FLOOR	--	--																																														
AA:	--	5																																														