



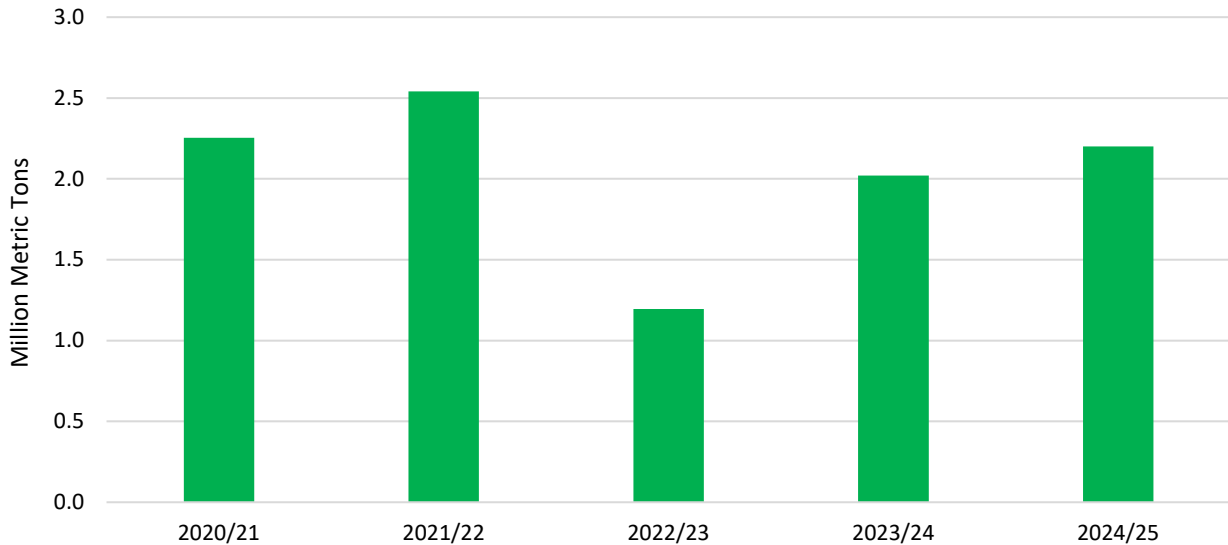
December 2024

United States Department of Agriculture Foreign Agricultural Service

Oilseeds: World Markets and Trade

Bangladesh Soybean Import Recovery Expected to Continue

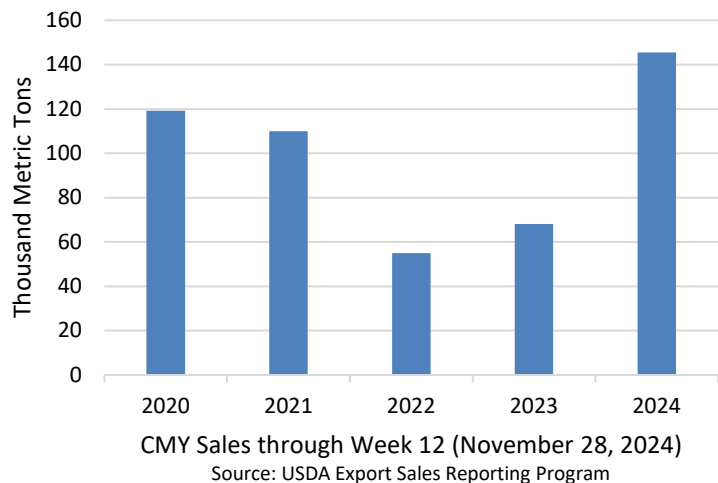
Total Bangladesh Soybean Imports



2024/25 Bangladesh soybean imports are expected to continue to recover on strong demand from the domestic feed sector and economic stabilization. This recovery marks a positive turn for the Bangladesh economy after a high inflation- and currency-driven slowdown in 2022. Importers struggled to receive letters of credit due to a domestic currency crisis and shortage of U.S. dollars.

Bangladesh real Gross Domestic Product is expected to grow by 4.5 percent in 2025 according to the International Monetary Fund. FAS Dhaka reports that the animal feed sector will grow in the coming years. A recent report states that livestock feed production was 6.6 million tons in 2022 and is likely to hit 10.0 million tons by 2030. At the same time, industry is reporting the opening of new crush facilities. In the coming years, Bangladesh import dependence will grow as their domestic soybean consumption increases. U.S. soybean exports to Bangladesh are expected to grow alongside and continue to play a role in the expansion of the Bangladesh feed and crush sector.

U.S. Soybean Current Marketing Year (CMY) Sales to Bangladesh



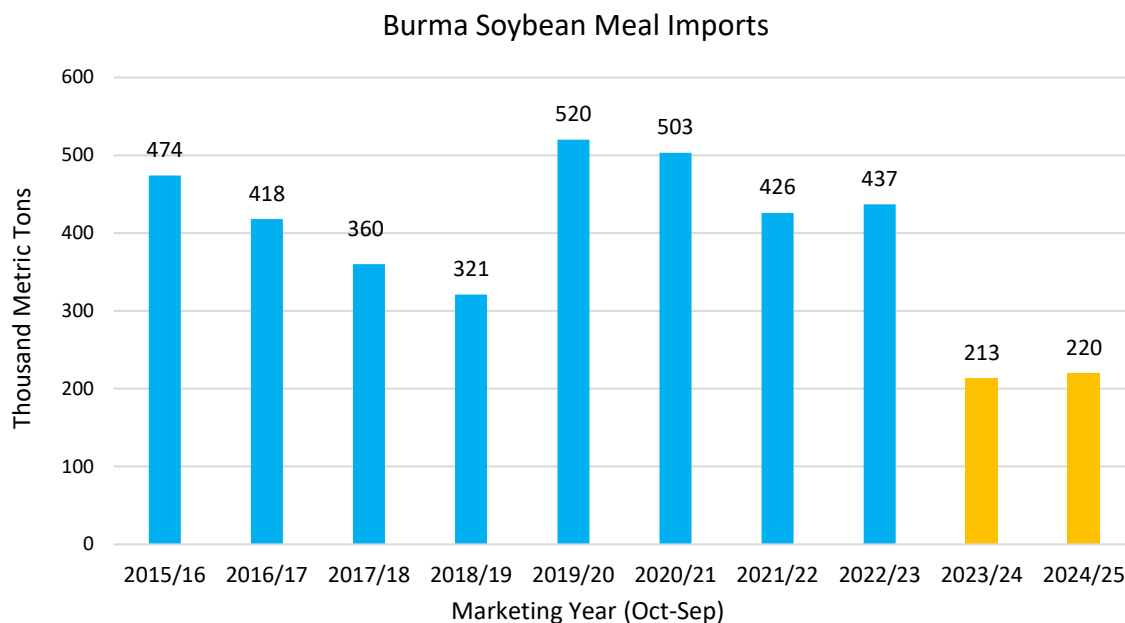
Based on current export commitments, U.S. soybean exports to Bangladesh are well-positioned for 2024/25. As of November 28, Export Sales reported the highest volume of outstanding sales for the same week in the past 5 years.

Approved by the World Agricultural Outlook Board/USDA

For email subscription, click here to register:

<https://public.govdelivery.com/accounts/USDAFAS/subscriber/new>

Decreased Feed Demand Halves Burma Soybean Meal Imports



Burma hit a 10-year low in imports of soybean meal during the 2023/24 (October-September) marketing year, totaling 213,000 tons. For 2024/25, Burma imports of soybean meal were lowered this month to 220,000 tons on expectations of lower feed demand this year. This shift follows reductions in the livestock sector between 2020 and 2023 due to political instability, foreign currency controls, and natural disasters. Domestic production of livestock is not expected to recover this year as production costs remain high and purchasing power among consumers declines, lowering meat demand.

Leading into 2023/24, livestock producers in Burma faced increasing input costs. Between 2021 and 2023, production costs rose 75 percent for eggs, 18 percent for swine, and 40 percent for broilers. Higher input costs were partially due to foreign currency controls and some import restrictions which led to lower imports and higher costs for buyers.

In 2023/24, Burma's livestock sector is estimated to have shrunk 40 percent and imports of soybean meal decreased over 50 percent. Cyclone Mocha hit the westward state of Rakhine in May 2023, damaging livestock operations and transportation. During the third quarter of 2024, a major poultry feed manufacturer and hatchery in the Mandalay region suspended operations, citing rising input costs and labor shortages. During this time, Burma saw an increase of citizens relocating from their farms and homes due to conflict. The unstable security environment in these regions also impacted transportation. Closures of major roads and waterways in November 2023 exacerbated domestic supply shortages, further increasing cost of production inputs.

DATA SERIES REVISIONS

Bolivia Soybean Revision

Bolivia soybean production was revised to align with revisions published by Bolivia's Instituto Nacional de Estadística and Ministerio de Desarrollo Rural y Tierras for 2017/18 through 2022/23. Production forecasts in 2023/24 and 2024/25 were also adjusted higher after incorporating these revisions. In line with the changes, soybean utilization – including crush, soybean meal consumption, and soybean oil consumption – for these years have been adjusted.

OVERVIEW 2024/25

The global oilseeds production forecast is up over 1.2 million tons to 683.4 million tons this month on higher Argentina, Bolivia, and Canada soybeans, not offset by a decline in Canada rapeseed. Oilseeds trade is slightly lowered to 207.3 million tons as declines in Canada rapeseed exports exceeded a gain in Canada soybean exports. Oilseeds ending stocks are lowered almost 500,000 tons on reduced Canada and China rapeseed stocks and EU soybean stocks. Global crush is increased over 1.2 million tons to 558.2 million tons on higher Argentina soybean crush. Global meal trade is up 1.0 million tons to 107.1 million on higher Argentina soybean meal exports combined with higher Russia and Ukraine sunflowerseed meal exports. Global vegetable oil trade is down over 500,000 tons to 86.1 million as decreases in Indonesia and Malaysia palm oil exports outweigh increased exports of U.S., Argentina, and Brazil soybean oil and Russia and Ukraine sunflowerseed oil.

The projected U.S. season-average farm price for soybeans is decreased 60 cents to \$10.20 per bushel.

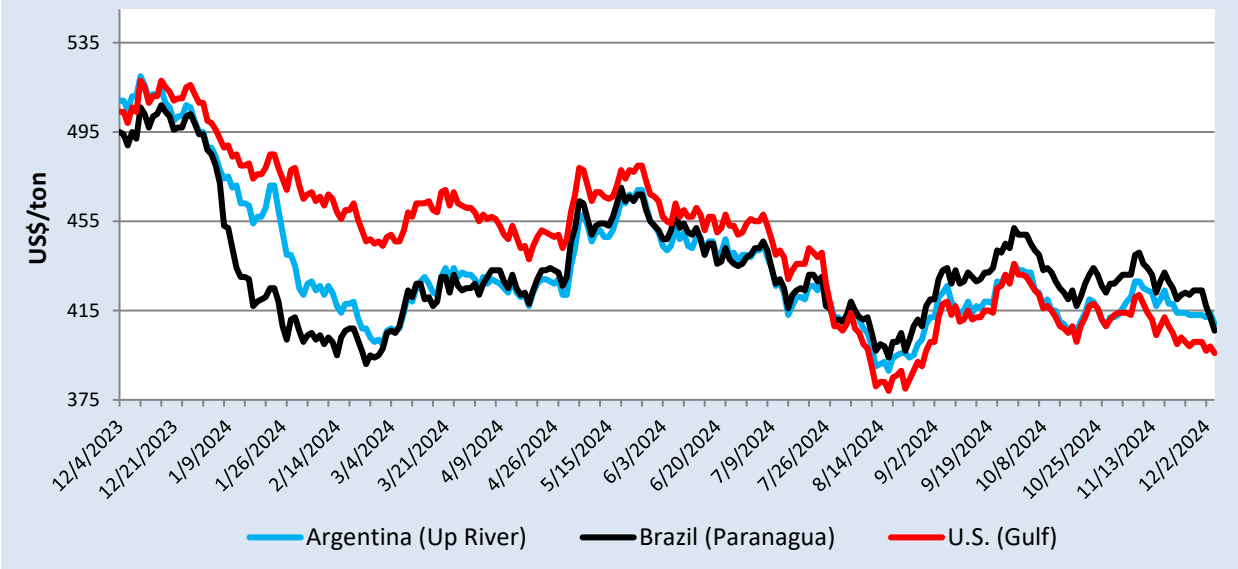
EXPORT PRICES

Since the last WASDE report, soybean prices dropped slightly on favorable weather conditions in South America as planting nears completion. Soybean meal prices followed the retreat in soybean prices with global supplies outpacing demand, increasing global meal stocks.

Since mid-November, palm oil prices in both Indonesia and Malaysia increased, while soybean oil prices declined due to higher-than-expected Argentina crush and exports. Heavy rains and insufficient exportable supplies in Indonesia and Malaysia are contributing to high palm prices whereas soybean oil prices have come under pressure from large global soybean supplies, creating an unusual premium for palm oil prices relative to soy. As palm oil prices continue to climb, soybean oil exports are expected to offset some but not all of the declining palm oil exports, as the global vegetable oil market continues to tighten.

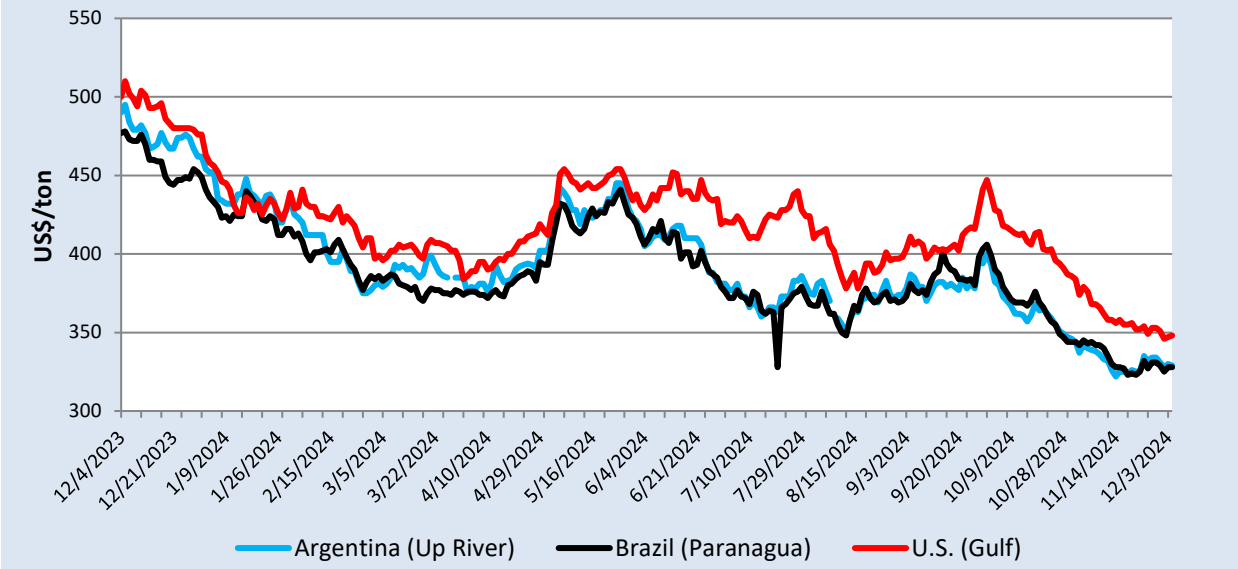
Soybean oil prices also fell below Ukraine sunflowerseed oil for nearly the first time since September 2022. Ukraine sunflowerseed oil prices remained relatively consistent throughout the month.

SOYBEAN EXPORT PRICES



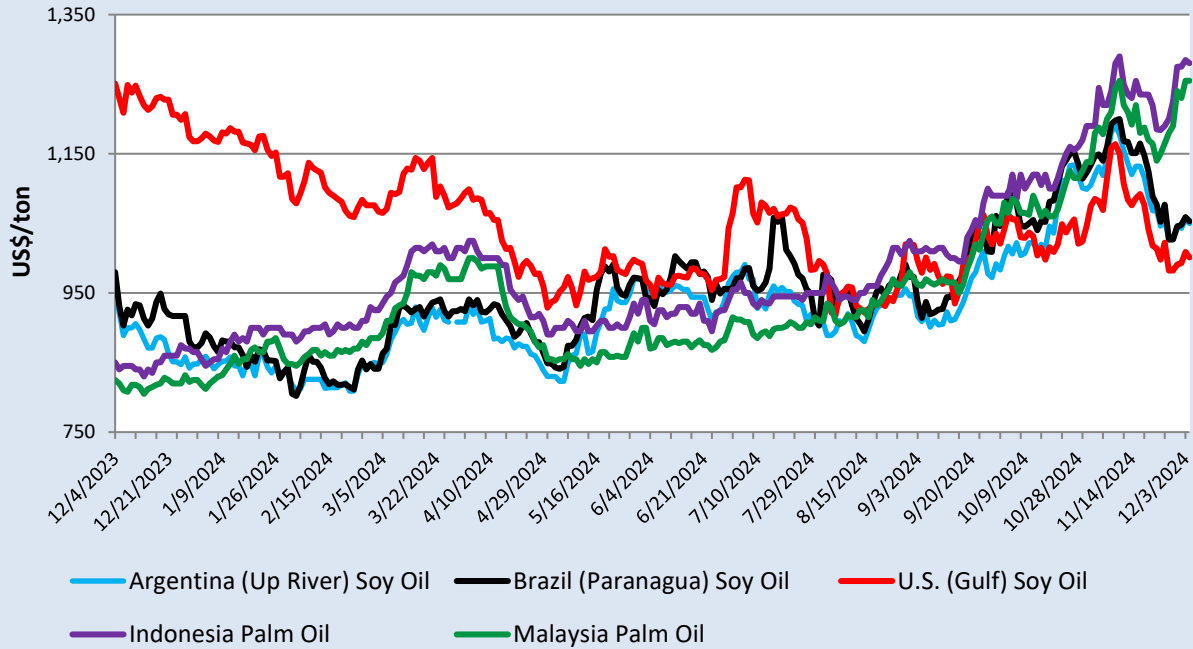
Source: International Grains Council. All prices are FOB: U.S. Gulf, Argentina Up River, and Brazil Paranagua.

SOYBEAN MEAL EXPORT PRICES



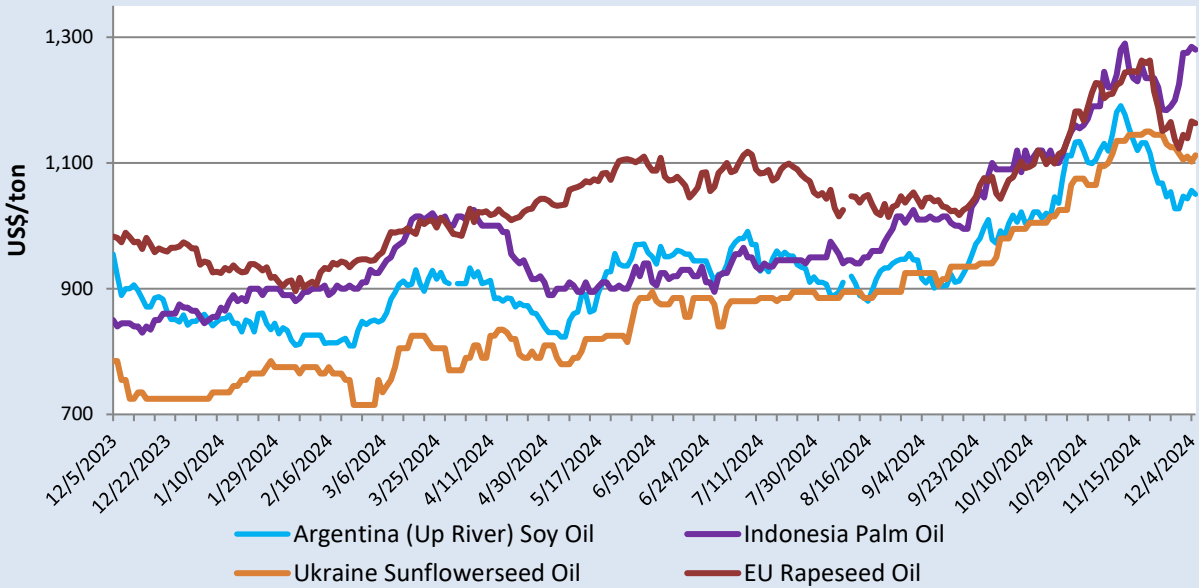
Source: International Grains Council. All prices are FOB: U.S. Gulf, Argentina Up River, and Brazil Paranagua.

SOYBEAN AND PALM OIL EXPORT PRICES



Source: International Grains Council

VEGETABLE OIL EXPORT PRICES



Source: International Grains Council

2024/25 OUTLOOK CHANGES (All figures are in thousand metric tons)

| Country | Commodity | Attribute | Previous | Current | Change | Reason |
|-----------------------|---------------------|-----------|----------|---------------|---------------|--|
| Algeria | Meal, Soybean | Imports | 100 | 300 | 200 | Larger exportable supplies in Argentina |
| | Oilseed, Soybean | Imports | 1,850 | 2,050 | 200 | Larger exportable supplies in Canada |
| Argentina | Meal, Soybean | Exports | 27,300 | 28,000 | 700 | Larger exportable supplies on higher crush |
| | Oil, Soybean | Exports | 5,600 | 5,800 | 200 | |
| Brazil | Oil, Soybean | Exports | 1,400 | 1,550 | 150 | Increased exports reflecting renewed price competitiveness |
| Burma | Meal, Soybean | Imports | 480 | 220 | -260 | Reduced demand for feed consumption |
| Canada | Oilseed, Rapeseed | Exports | 7,350 | 6,750 | -600 | Lower crop prospects |
| | Oilseed, Soybean | Exports | 4,600 | 4,800 | 200 | Higher crop prospects |
| | Oil, Soybean | Imports | 240 | 400 | 160 | Raised industrial usage |
| China | Oil, Palm | Imports | 5,900 | 5,150 | -750 | Lower global availability |
| | Oilseed, Rapeseed | Imports | 3,400 | 3,000 | -400 | Reduced Canada exports |
| European Union | Meal, Soybean | Imports | 16,200 | 16,500 | 300 | Larger exportable supplies |
| | Meal, Sunflowerseed | Imports | 2,400 | 2,700 | 300 | |
| | Oil, Sunflowerseed | Imports | 2,000 | 2,175 | 175 | Larger exportable supplies in Ukraine |
| | Oilseed, Rapeseed | Imports | 6,700 | 6,850 | 150 | |
| India | Oil, Palm | Imports | 9,900 | 9,400 | -500 | Lower global availability |
| | Oil, Soybean | Imports | 3,600 | 3,800 | 200 | Increased demand for substitute vegetable oils |
| Indonesia | Oil, Palm | Exports | 25,200 | 24,200 | -1,000 | Reduced carryin and higher domestic industrial usage |
| Iran | Meal, Soybean | Imports | 1,775 | 1,975 | 200 | Larger exportable supplies in Argentina |
| Malaysia | Oil, Palm | Exports | 16,300 | 15,900 | -400 | Reduced production outlook |
| | Oil, Palm | Imports | 400 | 250 | -150 | Lower Indonesia exports |
| Ukraine | Meal, Sunflowerseed | Exports | 3,925 | 4,100 | 175 | Increased production outlook |

| | | | | | | |
|----------------------|-----------------------|---------|-------|--------------|------------|--|
| | Oil, Sunflowerseed | Exports | 4,825 | 5,000 | 175 | |
| | Oilseed, Rapeseed | Exports | 3,220 | 3,370 | 150 | |
| United States | Oil, Soybean | Exports | 272 | 499 | 227 | Increased exports reflecting price competitiveness |

ENDNOTES

REGION DEFINITIONS

North America: Canada, Mexico, the United States

Central America: Belize, Costa Rica, El Salvador, Guatemala, Honduras, Nicaragua, Panama

Caribbean: Cuba, Dominican Republic, Haiti, Jamaica, Trinidad and Tobago

South America: Argentina, Bolivia, Brazil, Chile, Colombia, Ecuador, Guyana, Paraguay, Peru, Suriname, Uruguay, Venezuela

EU: Austria, Belgium/Luxembourg, Bulgaria, Croatia, Cyprus, Czech Republic, Denmark, Estonia, Finland, France, Germany, Greece, Hungary, Ireland, Italy, Latvia, Lithuania, Malta, Netherlands, Poland, Portugal, Romania, Slovakia, Slovenia, Spain, and Sweden. Effective January 1, 2021, the separation of the United Kingdom (UK) from the European Union (EU) was complete, including trade between both entities. Starting in May 2021 with the release of 2021/22 data, grain PSDs reflect EU27 (shown in the PSD system as “European Union”) and UK separately. Beginning with the release of 2021/22 data, historical data for both EU27 and the UK are provided for 5 years (2016/17 through 2020/21).

Other Europe: Albania, Bosnia and Herzegovina, Former Yugoslavia, Gibraltar, Iceland, North Macedonia, Montenegro, Norway, Serbia, Switzerland, United Kingdom

Former Soviet Union: Armenia, Azerbaijan, Belarus, Georgia, Kazakhstan, Kyrgyzstan, Moldova, Russia, Tajikistan, Turkmenistan, Ukraine, Uzbekistan

Middle East: Afghanistan, Bahrain, Iran, Iraq, Israel, Jordan, Kuwait, Lebanon, Oman, Qatar, Saudi Arabia, Syria, Turkey, United Arab Emirates, and Yemen

North Africa: Algeria, Egypt, Libya, Morocco, Tunisia

Sub-Saharan Africa: all African countries except North Africa

East Asia: China, Hong Kong, Japan, South Korea, North Korea, Macau, Mongolia, Taiwan

South Asia: Bangladesh, Bhutan, India, Nepal, Pakistan, Sri Lanka

Southeast Asia: Brunei, Burma, Cambodia, Indonesia, Laos, Malaysia, Philippines, Singapore, Thailand, Vietnam

Oceania: Australia, Fiji, New Zealand, Papua New Guinea

OTHER NOTES

Marketing Years (MY): MY refers to the 12-month period at the onset of the main harvest, when the crop is marketed (i.e., consumed, traded, or stored). The year first listed begins a country's MY for that commodity (2022/23 starts in 2022); except for oilseeds in certain Southern Hemisphere countries, where the second year begins the MY (2022/23 starts in 2023). For a complete list of local marketing

years, please see the FAS website (<https://apps.fas.usda.gov/psdonline/>): go to Reports, Reference Data, and then Data Availability.

Stocks: Unless otherwise stated, stock data are based on an aggregate of differing local marketing years and should not be construed as representing world stock levels at a fixed point in time.

Consumption: World totals for consumption reflect total utilization, including food, seed, industrial, feed, and waste; as well as differences in local marketing year imports and local marketing year exports. Consumption statistics for regions and individual countries, however, reflect food, seed, industrial, feed, and waste only.

Trade: All PSD tables are balanced on the different local marketing years.

Oilseeds HS Codes

| | Seed | Meal | Oil |
|---------------|--|------------------------|----------------|
| Soybeans | 1201 | 2304, 230250, 120810 | 1507 |
| Peanuts | Unshelled: 120210, 120241 Shelled: 120220, 120242, 120230, 200811XX ^[1] | 2305 | 1508 |
| Copra | 1203 | 230650 | 151311, 151319 |
| Rapeseed | 1205 | 230640, 230641, 230649 | 1514 |
| Sunflowerseed | 1206 | 230630 | 151211, 151219 |
| Palm Kernel | 120710 | 230660 | 151321, 151329 |
| Cottonseed | 120720, 120721, 120729 | 230610 | 151221, 151229 |
| Palm | | | 1511 |
| Olive | | | 1509, 1510 |
| Fish | | 230120 | |

^[1] Peanut butter is found at the 8- or 10-digit level and varies by reporting country. Argentina and India do not report peanut butter trade.

The Global Commodity Analysis Division, Global Market Analysis, Foreign Agricultural Service, USDA, Washington, DC 20250 prepared this publication. Information is gathered from official statistics of foreign governments and other foreign source materials, reports of U.S. agricultural attachés and Foreign Service officers, office research, and related information. Further information may be obtained by writing the Division.

Note: For further details on world oilseeds production, please see World Agricultural Production. This publication is available in its entirety on the Internet via the Foreign Agricultural Service Home Page. The address is: <http://www.fas.usda.gov>

Questions may be directed to:

| | | |
|---------------|----------------|--|
| Luke Cummings | (202) 777-9015 | Luke.Cummings@usda.gov |
| Alex Beckman | (202) 649-3865 | Alexander.Beckman@usda.gov |
| Britt Couch | (202) 777-9055 | Brittney.Couch@usda.gov |
| Emma Aspell | (202) 720-9713 | Emma.Aspell@usda.gov |

To download the tables in the publication, go to the Production, Supply, and Distribution Database (PSD Online): (<http://apps.fas.usda.gov/psdonline/psdHome.aspx>), scroll down to Reports, and click the plus sign [+] next to Oilseeds.

The Foreign Agricultural Service (FAS) updates its production, supply, and distribution (PSD) database for cotton, oilseeds, and grains at 12:00 p.m. on the day the *World Agricultural Supply and Demand Estimates* (WASDE) report is released. This circular is released by 12:15 p.m.

FAS Reports and Databases:

Current *World Markets and Trade* and *World Agricultural Production* Reports:

<http://apps.fas.usda.gov/psdonline/psdDataPublications.aspx>

Archives *World Markets and Trade* and *World Agricultural Production* Reports:

<http://usda.mannlib.cornell.edu/MannUsda/viewTaxonomy.do?taxonomyID=7>

Production, Supply and Distribution Database (PSD Online):

<http://apps.fas.usda.gov/psdonline/psdHome.aspx>

Global Agricultural Trade System (U.S. Exports and Imports):

<http://apps.fas.usda.gov/gats/default.aspx>

Export Sales Report:

<http://apps.fas.usda.gov/esquery/>

Global Agricultural Information Network (Agricultural Attaché Reports):

<http://gain.fas.usda.gov/Pages/Default.aspx>

Other USDA Reports:

World Agricultural Supply and Demand Estimates (WASDE):

<http://www.usda.gov/oce/commodity/wasde/>

Economic Research Service:

<http://www.ers.usda.gov/topics/crops>

National Agricultural Statistics Service:

<http://www.nass.usda.gov/Publications/>

List of Tables

SUMMARY TABLES

| | |
|----------|--|
| Table 01 | Major Oilseeds: World Supply and Distribution (Commodity View) |
| Table 02 | Major Protein Meals: World Supply and Distribution (Commodity View) |
| Table 03 | Major Vegetable Oils: World Supply and Distribution (Commodity View) |
| Table 04 | Major Oilseeds: World Supply and Distribution (Country View) |
| Table 05 | Major Protein Meals: World Supply and Distribution (Country View) |
| Table 06 | Major Vegetable Oils: World Supply and Distribution (Country View) |

COMMODITY TABLES

| | |
|----------|---|
| Table 07 | Soybeans: World Supply and Distribution |
| Table 08 | Soybean Meal: World Supply and Distribution |
| Table 09 | Soybean Oil: World Supply and Distribution |
| Table 10 | Soybeans and Products: World Trade |

| | |
|----------|---|
| Table 11 | Palm Oil: World Supply and Distribution |
| Table 12 | Rapeseed and Products: World Supply and Distribution |
| Table 13 | Sunflowerseed and Products: World Supply and Distribution |
| Table 14 | Minor Vegetable Oils: World Supply and Distribution |

HISTORICAL TABLES

| | |
|----------|--|
| Table 15 | World Oilseeds and Products Supply and Distribution |
| Table 16 | World Soybeans and Products Supply and Distribution |
| Table 17 | World Rapeseed and Products Supply and Distribution |
| Table 18 | World Sunflowerseed and Products Supply and Distribution |
| Table 19 | World Palm Oil, Coconut Oil, and Fish Meal Supply and Distribution |

COUNTRY TABLES

| | |
|----------|---|
| Table 20 | United States Oilseeds and Products Supply and Distribution Local Marketing Years |
| Table 21 | United States Soybeans and Products Supply and Distribution Local Marketing Years |
| Table 22 | Brazil Soybeans and Products Supply and Distribution Local Marketing Years |
| Table 23 | Argentina Soybeans and Products Supply and Distribution Local Marketing Years |
| Table 24 | South East Asia Oilseeds and Products Supply and Distribution |
| Table 25 | Middle East Oilseeds and Products Supply and Distribution |
| Table 26 | European Union Oilseeds and Products Supply and Distribution |
| Table 27 | China Oilseeds and Products Supply and Distribution |
| Table 28 | India Oilseeds and Products Supply and Distribution |

Table 01: Major Oilseeds: World Supply and Distribution (Commodity View)

Million Metric Tons

| | 2020/21 | 2021/22 | 2022/23 | 2023/24 | Nov 2024/25 | Dec 2024/25 |
|------------------------|---------------|---------------|---------------|---------------|----------------|----------------|
| Production | | | | | | |
| Oilseed, Copra | 5.77 | 6.03 | 6.00 | 6.21 | 5.81 | 5.81 |
| Oilseed, Cottonseed | 41.70 | 41.13 | 42.36 | 41.30 | 42.10 | 42.61 |
| Oilseed, Palm Kernel | 19.09 | 18.88 | 19.75 | 19.68 | 20.86 | 20.62 |
| Oilseed, Peanut | 50.62 | 51.89 | 49.44 | 49.52 | 50.37 | 50.52 |
| Oilseed, Rapeseed | 74.75 | 75.83 | 88.90 | 89.89 | 87.24 | 86.18 |
| Oilseed, Soybean | 369.60 | 360.54 | 378.16 | 394.87 | 425.40 | 427.14 |
| Oilseed, Sunflowerseed | 48.87 | 56.86 | 52.78 | 56.03 | 50.44 | 50.51 |
| Total | 610.41 | 611.16 | 637.40 | 657.49 | 682.22 | 683.38 |
| Imports | | | | | | |
| Oilseed, Copra | 0.08 | 0.10 | 0.08 | 0.09 | 0.09 | 0.09 |
| Oilseed, Cottonseed | 0.81 | 0.98 | 1.36 | 1.32 | 1.17 | 1.18 |
| Oilseed, Palm Kernel | 0.15 | 0.15 | 0.15 | 0.22 | 0.15 | 0.15 |
| Oilseed, Peanut | 4.33 | 4.05 | 4.27 | 4.14 | 4.21 | 4.21 |
| Oilseed, Rapeseed | 16.67 | 13.92 | 20.05 | 18.31 | 16.80 | 16.55 |
| Oilseed, Soybean | 166.20 | 154.47 | 167.89 | 177.66 | 177.91 | 178.18 |
| Oilseed, Sunflowerseed | 2.72 | 3.83 | 3.77 | 2.57 | 2.17 | 2.17 |
| Total | 190.96 | 177.50 | 197.57 | 204.31 | 202.51 | 202.54 |
| Exports | | | | | | |
| Oilseed, Copra | 0.10 | 0.10 | 0.10 | 0.08 | 0.09 | 0.09 |
| Oilseed, Cottonseed | 0.96 | 1.27 | 1.07 | 1.44 | 1.42 | 1.38 |
| Oilseed, Palm Kernel | 0.05 | 0.05 | 0.05 | 0.04 | 0.05 | 0.05 |
| Oilseed, Peanut | 5.06 | 4.43 | 4.83 | 5.00 | 4.68 | 4.68 |
| Oilseed, Rapeseed | 18.03 | 15.35 | 19.55 | 18.01 | 17.14 | 16.87 |
| Oilseed, Soybean | 165.18 | 154.44 | 171.75 | 177.47 | 181.71 | 181.97 |
| Oilseed, Sunflowerseed | 2.95 | 3.95 | 4.02 | 2.87 | 2.30 | 2.30 |
| Total | 192.33 | 179.57 | 201.37 | 204.92 | 207.39 | 207.34 |
| Crush | | | | | | |
| Oilseed, Copra | 5.70 | 5.96 | 5.91 | 5.98 | 5.78 | 5.78 |
| Oilseed, Cottonseed | 32.34 | 31.88 | 32.50 | 33.02 | 33.27 | 33.28 |
| Oilseed, Palm Kernel | 19.09 | 18.73 | 19.77 | 19.59 | 20.80 | 20.60 |
| Oilseed, Peanut | 19.68 | 19.83 | 19.15 | 18.67 | 19.24 | 19.29 |
| Oilseed, Rapeseed | 72.11 | 72.06 | 81.11 | 84.82 | 84.53 | 84.53 |
| Oilseed, Soybean | 318.16 | 316.63 | 315.04 | 330.93 | 346.15 | 347.42 |
| Oilseed, Sunflowerseed | 45.05 | 46.72 | 51.40 | 52.38 | 47.17 | 47.27 |
| Total | 512.13 | 511.81 | 524.88 | 545.40 | 556.94 | 558.18 |
| Ending Stocks | | | | | | |
| Oilseed, Copra | 0.05 | 0.06 | 0.05 | 0.04 | 0.04 | 0.04 |
| Oilseed, Cottonseed | 1.66 | 1.49 | 1.44 | 1.58 | 1.51 | 1.72 |
| Oilseed, Palm Kernel | 0.19 | 0.32 | 0.28 | 0.37 | 0.33 | 0.33 |
| Oilseed, Peanut | 4.96 | 5.05 | 4.38 | 4.00 | 3.72 | 3.80 |
| Oilseed, Rapeseed | 6.23 | 4.75 | 8.96 | 10.11 | 8.05 | 7.19 |
| Oilseed, Soybean | 98.70 | 92.90 | 101.10 | 112.16 | 131.74 | 131.87 |
| Oilseed, Sunflowerseed | 2.41 | 7.85 | 4.15 | 3.20 | 2.28 | 2.27 |
| Total | 114.20 | 112.41 | 120.35 | 131.46 | 147.67 | 147.22 |

Totals may not add due to rounding

Table 02: Major Protein Meals: World Supply and Distribution (Commodity View)

Million Metric Tons

| | 2020/21 | 2021/22 | 2022/23 | 2023/24 | Nov 2024/25 | Dec 2024/25 |
|-----------------------------|---------------|---------------|---------------|---------------|----------------|----------------|
| Production | | | | | | |
| Meal, Copra | 1.90 | 1.97 | 1.96 | 1.98 | 1.92 | 1.92 |
| Meal, Cottonseed | 14.80 | 14.64 | 14.92 | 15.14 | 15.31 | 15.32 |
| Meal, Fish | 4.86 | 4.97 | 4.51 | 5.13 | 5.15 | 5.15 |
| Meal, Palm Kernel | 9.98 | 9.71 | 10.28 | 10.15 | 10.82 | 10.72 |
| Meal, Peanut | 7.85 | 7.91 | 7.64 | 7.46 | 7.70 | 7.72 |
| Meal, Rapeseed | 41.59 | 41.93 | 47.22 | 49.33 | 49.10 | 49.10 |
| Meal, Soybean | 249.75 | 248.16 | 247.46 | 259.86 | 271.49 | 272.48 |
| Meal, Sunflowerseed | 20.28 | 21.23 | 23.07 | 23.28 | 21.04 | 21.01 |
| Total | 351.01 | 350.52 | 357.05 | 372.33 | 382.53 | 383.42 |
| Imports | | | | | | |
| Meal, Copra | 0.62 | 0.69 | 0.62 | 0.61 | 0.63 | 0.63 |
| Meal, Cottonseed | 0.29 | 0.27 | 0.19 | 0.24 | 0.21 | 0.21 |
| Meal, Fish | 3.41 | 3.59 | 3.33 | 3.65 | 3.61 | 3.61 |
| Meal, Palm Kernel | 7.14 | 7.36 | 7.77 | 7.05 | 7.47 | 7.47 |
| Meal, Peanut | 0.10 | 0.13 | 0.12 | 0.07 | 0.09 | 0.09 |
| Meal, Rapeseed | 8.37 | 7.67 | 9.29 | 9.91 | 10.45 | 10.45 |
| Meal, Soybean | 65.32 | 67.13 | 63.38 | 69.34 | 71.26 | 71.91 |
| Meal, Sunflowerseed | 7.58 | 7.35 | 8.54 | 9.98 | 8.13 | 8.43 |
| Total | 92.82 | 94.18 | 93.24 | 100.85 | 101.84 | 102.79 |
| Exports | | | | | | |
| Meal, Copra | 0.55 | 0.75 | 0.62 | 0.62 | 0.67 | 0.67 |
| Meal, Cottonseed | 0.41 | 0.45 | 0.28 | 0.31 | 0.32 | 0.32 |
| Meal, Fish | 2.95 | 2.84 | 2.50 | 3.07 | 3.07 | 3.07 |
| Meal, Palm Kernel | 7.59 | 7.90 | 8.07 | 7.31 | 7.98 | 7.98 |
| Meal, Peanut | 0.13 | 0.18 | 0.18 | 0.15 | 0.17 | 0.17 |
| Meal, Rapeseed | 8.23 | 7.76 | 9.78 | 10.15 | 10.52 | 10.52 |
| Meal, Soybean | 69.44 | 68.82 | 67.07 | 74.43 | 74.67 | 75.37 |
| Meal, Sunflowerseed | 8.16 | 7.84 | 9.16 | 10.20 | 8.67 | 8.97 |
| Total | 97.45 | 96.55 | 97.65 | 106.24 | 106.06 | 107.06 |
| Domestic Consumption | | | | | | |
| Meal, Copra | 2.00 | 1.90 | 1.96 | 1.97 | 1.88 | 1.88 |
| Meal, Cottonseed | 14.69 | 14.47 | 14.81 | 15.07 | 15.18 | 15.19 |
| Meal, Fish | 5.38 | 5.64 | 5.37 | 5.72 | 5.68 | 5.68 |
| Meal, Palm Kernel | 9.39 | 9.31 | 10.04 | 9.94 | 10.25 | 10.15 |
| Meal, Peanut | 7.83 | 7.85 | 7.59 | 7.39 | 7.62 | 7.63 |
| Meal, Rapeseed | 41.85 | 41.63 | 46.97 | 48.97 | 49.07 | 49.04 |
| Meal, Soybean | 245.78 | 245.95 | 246.88 | 253.84 | 266.18 | 266.60 |
| Meal, Sunflowerseed | 20.49 | 20.98 | 21.81 | 22.67 | 21.00 | 21.00 |
| Total | 347.41 | 347.74 | 355.43 | 365.57 | 376.87 | 377.18 |
| Ending Stocks | | | | | | |
| Meal, Copra | 0.04 | 0.04 | 0.04 | 0.04 | 0.03 | 0.03 |
| Meal, Cottonseed | 0.11 | 0.10 | 0.11 | 0.10 | 0.11 | 0.11 |
| Meal, Fish | 0.19 | 0.27 | 0.23 | 0.23 | 0.24 | 0.24 |
| Meal, Palm Kernel | 0.83 | 0.68 | 0.62 | 0.57 | 0.63 | 0.61 |
| Meal, Peanut | 0.03 | 0.03 | 0.03 | 0.03 | 0.03 | 0.05 |
| Meal, Rapeseed | 1.28 | 1.49 | 1.25 | 1.37 | 1.38 | 1.38 |
| Meal, Soybean | 16.00 | 16.51 | 13.40 | 14.33 | 16.29 | 16.74 |
| Meal, Sunflowerseed | 1.32 | 1.08 | 1.72 | 2.11 | 1.61 | 1.57 |
| Total | 19.79 | 20.20 | 17.40 | 18.77 | 20.32 | 20.73 |

Totals may not add due to rounding

Table 03: Major Vegetable Oils: World Supply and Distribution (Commodity View)

Million Metric Tons

| | 2020/21 | 2021/22 | 2022/23 | 2023/24 | Nov 2024/25 | Dec 2024/25 |
|-----------------------------|---------------|---------------|---------------|---------------|----------------|----------------|
| Production | | | | | | |
| Oil, Coconut | 3.58 | 3.73 | 3.72 | 3.77 | 3.65 | 3.65 |
| Oil, Cottonseed | 4.84 | 4.80 | 4.89 | 4.97 | 5.02 | 5.02 |
| Oil, Olive | 2.94 | 3.30 | 2.44 | 2.42 | 3.07 | 3.07 |
| Oil, Palm | 73.37 | 73.17 | 76.63 | 76.26 | 80.18 | 79.63 |
| Oil, Palm Kernel | 8.43 | 8.24 | 8.75 | 8.67 | 9.17 | 9.08 |
| Oil, Peanut | 6.38 | 6.44 | 6.22 | 6.06 | 6.25 | 6.27 |
| Oil, Rapeseed | 29.44 | 29.17 | 32.86 | 34.47 | 34.29 | 34.29 |
| Oil, Soybean | 60.06 | 60.05 | 59.57 | 62.74 | 65.49 | 65.86 |
| Oil, Sunflowerseed | 19.01 | 19.69 | 21.72 | 22.13 | 19.92 | 19.96 |
| Total | 208.03 | 208.60 | 216.79 | 221.48 | 227.02 | 226.81 |
| Imports | | | | | | |
| Oil, Coconut | 1.95 | 2.24 | 1.94 | 1.97 | 1.91 | 1.91 |
| Oil, Cottonseed | 0.10 | 0.12 | 0.08 | 0.09 | 0.07 | 0.07 |
| Oil, Olive | 1.21 | 1.28 | 1.09 | 1.09 | 1.17 | 1.17 |
| Oil, Palm | 46.86 | 41.60 | 47.12 | 42.93 | 45.98 | 44.58 |
| Oil, Palm Kernel | 2.93 | 2.55 | 2.68 | 2.70 | 2.84 | 2.81 |
| Oil, Peanut | 0.44 | 0.29 | 0.39 | 0.34 | 0.36 | 0.36 |
| Oil, Rapeseed | 6.33 | 5.13 | 6.89 | 7.54 | 7.73 | 7.72 |
| Oil, Soybean | 11.69 | 11.34 | 10.81 | 10.45 | 11.21 | 11.79 |
| Oil, Sunflowerseed | 9.67 | 9.68 | 12.56 | 13.75 | 10.48 | 10.75 |
| Total | 81.19 | 74.23 | 83.57 | 80.87 | 81.74 | 81.16 |
| Exports | | | | | | |
| Oil, Coconut | 1.73 | 2.24 | 2.18 | 2.00 | 1.99 | 1.99 |
| Oil, Cottonseed | 0.10 | 0.13 | 0.10 | 0.08 | 0.10 | 0.10 |
| Oil, Olive | 1.36 | 1.42 | 1.21 | 1.16 | 1.22 | 1.22 |
| Oil, Palm | 48.56 | 43.90 | 49.52 | 44.80 | 47.98 | 46.58 |
| Oil, Palm Kernel | 3.21 | 2.78 | 2.97 | 3.10 | 3.08 | 3.08 |
| Oil, Peanut | 0.48 | 0.35 | 0.35 | 0.47 | 0.39 | 0.39 |
| Oil, Rapeseed | 6.42 | 5.21 | 6.55 | 7.42 | 7.78 | 7.78 |
| Oil, Soybean | 12.61 | 12.44 | 11.71 | 11.77 | 12.10 | 12.65 |
| Oil, Sunflowerseed | 11.34 | 11.22 | 14.28 | 15.04 | 12.03 | 12.33 |
| Total | 85.79 | 79.69 | 88.86 | 85.84 | 86.67 | 86.12 |
| Domestic Consumption | | | | | | |
| Oil, Coconut | 3.65 | 3.60 | 3.55 | 3.73 | 3.70 | 3.70 |
| Oil, Cottonseed | 4.87 | 4.82 | 4.88 | 4.94 | 4.98 | 4.98 |
| Oil, Olive | 3.02 | 3.04 | 2.58 | 2.48 | 2.83 | 2.83 |
| Oil, Palm | 72.47 | 69.42 | 74.27 | 75.10 | 78.86 | 78.32 |
| Oil, Palm Kernel | 8.28 | 8.05 | 8.47 | 8.27 | 8.90 | 8.75 |
| Oil, Peanut | 6.44 | 6.34 | 6.22 | 6.05 | 6.19 | 6.19 |
| Oil, Rapeseed | 28.60 | 30.16 | 32.68 | 34.53 | 34.63 | 34.72 |
| Oil, Soybean | 58.91 | 59.76 | 58.75 | 61.15 | 64.73 | 65.27 |
| Oil, Sunflowerseed | 18.31 | 17.56 | 19.55 | 21.00 | 19.03 | 19.11 |
| Total | 204.56 | 202.75 | 210.94 | 217.24 | 223.86 | 223.88 |
| Ending Stocks | | | | | | |
| Oil, Coconut | 0.79 | 0.91 | 0.85 | 0.87 | 0.74 | 0.74 |
| Oil, Cottonseed | 0.19 | 0.16 | 0.16 | 0.19 | 0.21 | 0.20 |
| Oil, Olive | 0.59 | 0.71 | 0.46 | 0.33 | 0.51 | 0.51 |
| Oil, Palm | 15.23 | 16.67 | 16.63 | 15.92 | 15.75 | 15.23 |
| Oil, Palm Kernel | 1.00 | 0.96 | 0.95 | 0.94 | 1.00 | 1.00 |
| Oil, Peanut | 0.30 | 0.34 | 0.38 | 0.26 | 0.29 | 0.30 |
| Oil, Rapeseed | 3.66 | 2.59 | 3.11 | 3.17 | 2.79 | 2.68 |
| Oil, Soybean | 5.92 | 5.11 | 5.03 | 5.30 | 4.97 | 5.03 |
| Oil, Sunflowerseed | 2.04 | 2.65 | 3.11 | 2.95 | 2.09 | 2.22 |
| Total | 29.71 | 30.10 | 30.67 | 29.94 | 28.33 | 27.90 |

Totals may not add due to rounding

Table 04: Major Oilseeds: World Supply and Distribution (Country View)

Million Metric Tons

| | 2020/21 | 2021/22 | 2022/23 | 2023/24 | Nov 2024/25 | Dec 2024/25 |
|----------------------|---------------|---------------|---------------|---------------|----------------|----------------|
| Production | | | | | | |
| Brazil | 144.89 | 135.18 | 166.92 | 158.80 | 175.73 | 175.76 |
| United States | 124.54 | 131.32 | 125.75 | 122.16 | 131.15 | 131.16 |
| China | 65.70 | 62.03 | 67.94 | 69.08 | 68.30 | 68.30 |
| Argentina | 51.25 | 49.88 | 31.45 | 54.24 | 56.99 | 58.19 |
| India | 39.18 | 43.17 | 42.31 | 41.39 | 43.11 | 43.53 |
| Other | 184.85 | 189.58 | 203.02 | 211.82 | 206.95 | 206.44 |
| Total | 610.41 | 611.16 | 637.40 | 657.49 | 682.22 | 683.38 |
| Imports | | | | | | |
| China | 104.12 | 93.19 | 111.71 | 119.13 | 113.80 | 113.40 |
| European Union | 22.19 | 22.82 | 22.36 | 20.60 | 22.63 | 22.78 |
| Mexico | 7.82 | 7.20 | 8.13 | 7.87 | 8.23 | 8.23 |
| Argentina | 4.82 | 3.84 | 9.06 | 7.79 | 6.00 | 6.00 |
| Japan | 5.70 | 5.78 | 5.49 | 5.42 | 5.46 | 5.46 |
| Turkey | 3.73 | 3.68 | 4.02 | 3.69 | 4.13 | 4.13 |
| Thailand | 4.26 | 3.34 | 3.34 | 3.54 | 3.99 | 3.99 |
| Egypt | 3.68 | 4.61 | 2.00 | 3.21 | 3.64 | 3.64 |
| Iran | 2.83 | 1.89 | 2.90 | 2.65 | 3.32 | 3.32 |
| Indonesia | 3.00 | 2.80 | 2.72 | 3.07 | 3.18 | 3.18 |
| Other | 28.82 | 28.36 | 25.84 | 27.35 | 28.15 | 28.43 |
| Total | 190.96 | 177.50 | 197.57 | 204.31 | 202.51 | 202.54 |
| Exports | | | | | | |
| Brazil | 82.02 | 79.45 | 95.92 | 104.57 | 105.97 | 105.97 |
| United States | 62.78 | 59.55 | 54.78 | 47.35 | 50.79 | 50.82 |
| Canada | 15.09 | 9.58 | 12.22 | 11.63 | 11.98 | 11.58 |
| Ukraine | 4.05 | 5.71 | 8.37 | 7.28 | 7.65 | 7.80 |
| Paraguay | 6.35 | 2.28 | 6.50 | 8.12 | 7.31 | 7.31 |
| Argentina | 6.37 | 3.99 | 5.12 | 6.24 | 5.63 | 5.63 |
| Australia | 4.03 | 6.66 | 6.70 | 6.10 | 5.45 | 5.57 |
| Other | 11.64 | 12.35 | 11.75 | 13.63 | 12.61 | 12.66 |
| Total | 192.33 | 179.57 | 201.37 | 204.92 | 207.39 | 207.34 |
| Crush | | | | | | |
| China | 132.00 | 127.05 | 135.20 | 138.60 | 142.20 | 142.20 |
| United States | 62.66 | 63.87 | 64.16 | 66.32 | 69.83 | 69.83 |
| Brazil | 51.29 | 54.87 | 57.54 | 59.73 | 59.67 | 59.67 |
| European Union | 46.66 | 47.91 | 48.25 | 48.29 | 47.82 | 47.22 |
| Argentina | 43.67 | 42.79 | 34.59 | 40.69 | 44.01 | 45.08 |
| India | 32.39 | 32.20 | 34.78 | 35.63 | 35.58 | 35.58 |
| Russia | 18.75 | 21.20 | 24.50 | 25.55 | 25.80 | 26.10 |
| Ukraine | 15.40 | 12.50 | 15.68 | 18.55 | 14.45 | 14.85 |
| Canada | 12.07 | 10.40 | 11.73 | 12.69 | 13.75 | 13.75 |
| Indonesia | 13.02 | 12.51 | 13.26 | 12.58 | 13.64 | 13.64 |
| Mexico | 7.67 | 7.46 | 8.17 | 7.73 | 7.96 | 7.96 |
| Malaysia | 4.99 | 4.91 | 5.09 | 5.35 | 5.46 | 5.28 |
| Turkey | 5.25 | 5.34 | 6.03 | 5.06 | 5.19 | 5.19 |
| Pakistan | 5.48 | 5.60 | 3.85 | 5.02 | 4.97 | 4.97 |
| Japan | 4.68 | 4.79 | 4.63 | 4.47 | 4.48 | 4.48 |
| Other | 56.18 | 58.43 | 57.43 | 59.15 | 62.12 | 62.38 |
| Total | 512.13 | 511.81 | 524.88 | 545.40 | 556.94 | 558.18 |
| Ending Stocks | | | | | | |
| China | 31.00 | 26.26 | 35.15 | 47.28 | 48.76 | 48.36 |
| Brazil | 29.65 | 27.50 | 37.03 | 28.17 | 33.82 | 33.86 |
| Argentina | 25.94 | 24.83 | 18.38 | 25.32 | 30.14 | 30.25 |
| United States | 8.64 | 9.14 | 8.85 | 10.80 | 14.22 | 14.23 |
| Canada | 2.12 | 1.81 | 2.29 | 3.36 | 3.41 | 3.08 |
| Other | 16.84 | 22.87 | 18.66 | 16.52 | 17.32 | 17.45 |
| Total | 114.20 | 112.41 | 120.35 | 131.46 | 147.67 | 147.22 |

Major Oilseeds includes Copra, Cottonseed, Palm Kernel, Peanut, Rapeseed, Soybeans and Sunflowerseeds.

Table 05: Major Protein Meals: World Supply and Distribution (Country View)

Million Metric Tons

| | 2020/21 | 2021/22 | 2022/23 | 2023/24 | Nov 2024/25 | Dec 2024/25 |
|-----------------------------|---------------|---------------|---------------|---------------|----------------|----------------|
| Production | | | | | | |
| China | 93.93 | 90.10 | 96.07 | 98.84 | 101.80 | 101.80 |
| United States | 48.22 | 49.23 | 49.94 | 51.49 | 53.93 | 53.93 |
| Brazil | 38.13 | 41.03 | 43.09 | 44.51 | 44.27 | 44.27 |
| Argentina | 32.86 | 32.03 | 25.56 | 30.36 | 33.00 | 33.81 |
| European Union | 30.19 | 30.75 | 30.74 | 30.82 | 30.72 | 30.39 |
| Other | 107.68 | 107.38 | 111.66 | 116.32 | 118.81 | 119.21 |
| Total | 351.01 | 350.52 | 357.05 | 372.33 | 382.53 | 383.42 |
| Imports | | | | | | |
| European Union | 21.21 | 21.44 | 21.58 | 22.15 | 21.20 | 21.80 |
| China | 7.12 | 7.18 | 8.39 | 9.37 | 9.60 | 9.60 |
| Vietnam | 6.21 | 6.52 | 5.92 | 6.45 | 6.71 | 6.71 |
| Indonesia | 5.50 | 5.73 | 5.67 | 5.24 | 6.22 | 6.22 |
| United States | 4.39 | 3.57 | 4.31 | 4.28 | 4.35 | 4.35 |
| Thailand | 3.36 | 3.51 | 4.01 | 3.60 | 3.92 | 3.92 |
| Korea, South | 3.45 | 3.52 | 3.43 | 3.40 | 3.59 | 3.59 |
| Other | 41.58 | 42.71 | 39.93 | 46.36 | 46.25 | 46.59 |
| Total | 92.82 | 94.18 | 93.24 | 100.85 | 101.84 | 102.79 |
| Exports | | | | | | |
| Argentina | 29.33 | 27.60 | 21.91 | 26.07 | 28.38 | 29.08 |
| Brazil | 16.58 | 20.21 | 21.33 | 22.72 | 20.50 | 20.50 |
| United States | 12.62 | 12.48 | 13.39 | 14.81 | 15.99 | 15.99 |
| Canada | 5.63 | 4.93 | 5.69 | 5.96 | 6.52 | 6.52 |
| Indonesia | 5.33 | 5.85 | 5.87 | 4.92 | 5.73 | 5.73 |
| Ukraine | 5.02 | 3.92 | 4.60 | 5.78 | 4.61 | 4.78 |
| Russia | 2.74 | 3.07 | 3.82 | 4.19 | 4.04 | 4.17 |
| Other | 20.20 | 18.51 | 21.04 | 21.78 | 20.31 | 20.31 |
| Total | 97.45 | 96.55 | 97.65 | 106.24 | 106.06 | 107.06 |
| Domestic Consumption | | | | | | |
| China | 100.14 | 97.02 | 103.41 | 106.91 | 110.31 | 110.31 |
| European Union | 49.02 | 49.26 | 49.71 | 49.81 | 49.59 | 49.74 |
| United States | 39.98 | 40.36 | 40.79 | 40.88 | 42.29 | 42.29 |
| Brazil | 20.99 | 21.64 | 22.26 | 22.39 | 23.69 | 23.69 |
| India | 16.53 | 17.23 | 17.59 | 18.15 | 18.85 | 18.81 |
| Russia | 8.20 | 8.49 | 8.93 | 9.36 | 9.88 | 9.88 |
| Vietnam | 7.45 | 7.55 | 7.25 | 7.70 | 8.20 | 8.20 |
| Mexico | 7.61 | 7.61 | 7.84 | 7.82 | 8.22 | 8.12 |
| Indonesia | 6.44 | 6.38 | 6.62 | 6.84 | 7.09 | 7.08 |
| Thailand | 6.04 | 5.97 | 6.26 | 6.06 | 6.36 | 6.36 |
| Other | 85.00 | 86.23 | 84.78 | 89.64 | 92.40 | 92.70 |
| Total | 347.41 | 347.74 | 355.43 | 365.57 | 376.87 | 377.18 |
| SME | | | | | | |
| China | 94.35 | 91.17 | 96.47 | 99.86 | 103.08 | 103.08 |
| European Union | 42.39 | 42.35 | 42.31 | 42.51 | 42.55 | 42.70 |
| United States | 38.55 | 39.19 | 39.36 | 39.43 | 40.82 | 40.82 |
| Brazil | 20.57 | 21.28 | 21.88 | 21.93 | 23.19 | 23.19 |
| India | 14.00 | 14.60 | 14.94 | 15.37 | 16.01 | 15.98 |
| Russia | 6.72 | 6.91 | 7.26 | 7.62 | 8.04 | 8.04 |
| Mexico | 7.32 | 7.38 | 7.55 | 7.58 | 7.97 | 7.87 |
| Other | 94.83 | 96.30 | 94.62 | 99.39 | 103.67 | 104.03 |
| Total | 318.73 | 319.19 | 324.38 | 333.71 | 345.34 | 345.71 |
| Ending Stocks | | | | | | |
| Argentina | 2.51 | 3.04 | 2.61 | 2.74 | 3.13 | 3.23 |
| Brazil | 4.47 | 3.67 | 3.17 | 2.58 | 2.66 | 2.67 |
| European Union | 1.12 | 1.36 | 1.26 | 1.72 | 1.40 | 1.61 |
| China | 0.96 | 0.71 | 0.94 | 0.79 | 0.87 | 0.87 |
| Ukraine | 0.50 | 0.36 | 0.57 | 0.98 | 0.79 | 0.78 |
| Other | 10.24 | 11.07 | 8.86 | 9.95 | 11.47 | 11.57 |
| Total | 19.79 | 20.20 | 17.40 | 18.77 | 20.32 | 20.73 |

Major Protein Meals include Copra, Cottonseed, Fish, Palm Kernel, Peanut, Rapeseed, Soybean, and Sunflower Meal.

Table 06: Major Vegetable Oils: World Supply and Distribution (Country View)

Million Metric Tons

| | 2020/21 | 2021/22 | 2022/23 | 2023/24 | Nov 2024/25 | Dec 2024/25 |
|-----------------------------|---------------|---------------|---------------|---------------|----------------|----------------|
| Production | | | | | | |
| Indonesia | 49.50 | 47.78 | 51.10 | 48.81 | 52.77 | 52.77 |
| China | 28.35 | 27.56 | 29.30 | 30.19 | 30.76 | 30.76 |
| Malaysia | 19.98 | 20.22 | 20.59 | 22.03 | 22.14 | 21.56 |
| European Union | 17.94 | 18.80 | 18.33 | 18.45 | 18.51 | 18.26 |
| United States | 12.69 | 13.05 | 13.18 | 13.63 | 14.21 | 14.33 |
| Brazil | 10.72 | 11.50 | 11.94 | 12.46 | 12.46 | 12.46 |
| Argentina | 9.40 | 9.35 | 7.84 | 9.00 | 9.64 | 9.85 |
| Other | 59.45 | 60.34 | 64.51 | 66.92 | 66.53 | 66.82 |
| Total | 208.03 | 208.60 | 216.79 | 221.48 | 227.02 | 226.81 |
| Imports | | | | | | |
| India | 13.81 | 14.31 | 17.12 | 15.85 | 15.50 | 15.20 |
| China | 13.25 | 7.13 | 11.40 | 9.14 | 10.45 | 9.90 |
| European Union | 9.93 | 9.82 | 9.15 | 9.36 | 8.38 | 8.68 |
| United States | 4.95 | 5.26 | 6.27 | 6.86 | 7.22 | 7.22 |
| Pakistan | 3.59 | 3.08 | 3.92 | 3.19 | 3.52 | 3.52 |
| Turkey | 1.71 | 2.42 | 2.75 | 2.49 | 2.31 | 2.31 |
| Bangladesh | 1.96 | 2.03 | 2.29 | 2.25 | 2.25 | 2.25 |
| Egypt | 1.75 | 1.71 | 1.65 | 1.81 | 1.90 | 1.90 |
| Iran | 1.89 | 1.51 | 1.45 | 1.36 | 1.64 | 1.64 |
| Korea, South | 1.24 | 1.20 | 1.20 | 1.32 | 1.24 | 1.24 |
| Other | 27.12 | 25.75 | 26.37 | 27.24 | 27.33 | 27.30 |
| Total | 81.19 | 74.23 | 83.57 | 80.87 | 81.74 | 81.16 |
| Exports | | | | | | |
| Indonesia | 29.45 | 24.27 | 30.25 | 24.46 | 27.45 | 26.45 |
| Malaysia | 17.32 | 16.82 | 16.64 | 17.85 | 17.56 | 17.16 |
| Argentina | 7.05 | 5.85 | 5.33 | 6.59 | 6.60 | 6.80 |
| Russia | 4.56 | 4.79 | 6.06 | 6.45 | 6.21 | 6.34 |
| Ukraine | 5.61 | 4.87 | 5.99 | 7.04 | 5.34 | 5.51 |
| Canada | 3.58 | 2.74 | 3.17 | 3.57 | 4.26 | 4.22 |
| European Union | 3.57 | 3.28 | 3.65 | 3.22 | 3.04 | 3.04 |
| Other | 14.65 | 17.09 | 17.77 | 16.67 | 16.21 | 16.60 |
| Total | 85.79 | 79.69 | 88.86 | 85.84 | 86.67 | 86.12 |
| Domestic Consumption | | | | | | |
| China | 40.26 | 37.15 | 39.17 | 39.90 | 41.12 | 40.77 |
| Indonesia | 19.50 | 21.43 | 23.23 | 24.90 | 25.90 | 26.44 |
| India | 22.53 | 22.82 | 23.86 | 24.75 | 25.62 | 25.59 |
| European Union | 25.57 | 24.48 | 24.40 | 24.20 | 24.05 | 24.10 |
| United States | 16.51 | 17.27 | 19.27 | 20.19 | 20.95 | 20.85 |
| Brazil | 10.17 | 9.60 | 10.22 | 11.51 | 11.65 | 11.65 |
| Malaysia | 4.72 | 4.65 | 5.40 | 5.17 | 5.52 | 5.27 |
| Pakistan | 4.80 | 4.62 | 4.85 | 4.41 | 4.61 | 4.61 |
| Russia | 3.62 | 3.70 | 3.78 | 3.85 | 3.95 | 3.95 |
| Bangladesh | 3.13 | 3.11 | 3.13 | 3.19 | 3.30 | 3.30 |
| Thailand | 3.13 | 2.97 | 3.08 | 3.14 | 3.22 | 3.26 |
| Mexico | 2.94 | 3.05 | 3.11 | 3.06 | 3.18 | 3.11 |
| Argentina | 2.67 | 3.29 | 2.75 | 2.42 | 3.07 | 3.08 |
| Nigeria | 2.46 | 2.56 | 2.65 | 2.76 | 2.88 | 2.88 |
| Turkey | 2.42 | 2.51 | 2.66 | 2.69 | 2.72 | 2.72 |
| Other | 40.13 | 39.54 | 39.37 | 41.11 | 42.14 | 42.30 |
| Total | 204.56 | 202.75 | 210.94 | 217.24 | 223.86 | 223.88 |
| Ending Stocks | | | | | | |
| Indonesia | 5.76 | 7.96 | 5.64 | 5.23 | 5.38 | 5.24 |
| India | 1.90 | 2.02 | 4.37 | 4.63 | 3.73 | 3.64 |
| Malaysia | 2.09 | 2.82 | 2.87 | 2.53 | 2.56 | 2.44 |
| European Union | 1.92 | 2.78 | 2.21 | 2.62 | 2.24 | 2.41 |
| China | 4.27 | 1.65 | 3.01 | 2.28 | 2.21 | 2.01 |
| Other | 13.79 | 12.88 | 12.57 | 12.64 | 12.22 | 12.17 |
| Total | 29.71 | 30.10 | 30.67 | 29.94 | 28.33 | 27.90 |

Major Vegetable Oils includes Coconut, Cottonseed, Olive, Palm, Palm Kernel, Peanut, Rapeseed, Soybean, and Sunflowerseed oil.

Table 07: Soybeans: World Supply and Distribution

Thousand Metric Tons

| | 2020/21 | 2021/22 | 2022/23 | 2023/24 | Nov 2024/25 | Dec 2024/25 |
|----------------------|----------------|----------------|----------------|----------------|----------------|----------------|
| Production | | | | | | |
| Brazil | 139,500 | 130,500 | 162,000 | 153,000 | 169,000 | 169,000 |
| United States | 114,749 | 121,504 | 116,221 | 113,273 | 121,417 | 121,417 |
| Argentina | 46,200 | 43,900 | 25,000 | 48,210 | 51,000 | 52,000 |
| China | 19,602 | 16,395 | 20,284 | 20,840 | 20,700 | 20,700 |
| India | 10,456 | 11,889 | 12,411 | 11,875 | 12,582 | 12,582 |
| Paraguay | 9,642 | 4,183 | 10,250 | 11,000 | 11,200 | 11,200 |
| Canada | 6,359 | 6,224 | 6,543 | 6,981 | 7,200 | 7,568 |
| Other | 23,095 | 25,946 | 25,451 | 29,694 | 32,303 | 32,669 |
| Total | 369,603 | 360,541 | 378,160 | 394,873 | 425,402 | 427,136 |
| Imports | | | | | | |
| China | 99,740 | 90,297 | 104,500 | 112,000 | 109,000 | 109,000 |
| European Union | 14,786 | 14,544 | 13,143 | 13,454 | 14,600 | 14,600 |
| Mexico | 6,101 | 5,956 | 6,442 | 6,456 | 6,700 | 6,700 |
| Argentina | 4,816 | 3,839 | 9,059 | 7,787 | 6,000 | 6,000 |
| Thailand | 4,157 | 3,243 | 3,238 | 3,428 | 3,875 | 3,875 |
| Egypt | 3,607 | 4,566 | 1,992 | 3,200 | 3,600 | 3,600 |
| Turkey | 2,745 | 2,949 | 2,888 | 3,252 | 3,500 | 3,500 |
| Japan | 3,085 | 3,455 | 3,332 | 3,099 | 3,350 | 3,350 |
| Iran | 2,777 | 1,817 | 2,803 | 2,554 | 3,250 | 3,250 |
| Taiwan | 2,615 | 2,622 | 2,559 | 2,625 | 2,850 | 2,850 |
| Other | 21,770 | 21,180 | 17,929 | 19,801 | 21,187 | 21,457 |
| Total | 166,199 | 154,468 | 167,885 | 177,656 | 177,912 | 178,182 |
| Exports | | | | | | |
| Brazil | 81,650 | 79,063 | 95,504 | 104,170 | 105,500 | 105,500 |
| United States | 61,664 | 58,570 | 53,874 | 46,128 | 49,668 | 49,668 |
| Paraguay | 6,330 | 2,273 | 6,495 | 8,100 | 7,300 | 7,300 |
| Canada | 4,554 | 4,289 | 4,240 | 4,846 | 4,600 | 4,800 |
| Argentina | 5,195 | 2,861 | 4,185 | 5,114 | 4,500 | 4,500 |
| Other | 5,783 | 7,379 | 7,455 | 9,114 | 10,142 | 10,205 |
| Total | 165,176 | 154,435 | 171,753 | 177,472 | 181,710 | 181,973 |
| Crush | | | | | | |
| China | 95,000 | 90,000 | 96,000 | 99,000 | 103,000 | 103,000 |
| United States | 58,257 | 59,980 | 60,199 | 62,244 | 65,589 | 65,589 |
| Brazil | 46,675 | 50,767 | 53,409 | 54,700 | 54,000 | 54,000 |
| Argentina | 40,162 | 38,825 | 30,318 | 36,550 | 40,000 | 41,000 |
| European Union | 15,800 | 15,400 | 14,300 | 14,500 | 15,200 | 15,200 |
| India | 10,000 | 8,500 | 10,300 | 11,300 | 11,000 | 11,000 |
| Mexico | 6,200 | 6,350 | 6,650 | 6,530 | 6,650 | 6,650 |
| Russia | 4,500 | 4,900 | 5,400 | 5,900 | 6,100 | 6,100 |
| Egypt | 3,700 | 4,500 | 2,200 | 3,125 | 3,500 | 3,500 |
| Paraguay | 3,325 | 2,200 | 3,450 | 3,000 | 3,500 | 3,500 |
| Iran | 2,400 | 2,500 | 3,000 | 2,700 | 3,350 | 3,350 |
| Bolivia | 3,050 | 3,100 | 3,300 | 3,000 | 3,000 | 3,100 |
| Japan | 2,300 | 2,640 | 2,600 | 2,345 | 2,540 | 2,540 |
| Thailand | 2,800 | 2,500 | 2,100 | 2,400 | 2,500 | 2,500 |
| Taiwan | 2,050 | 2,075 | 1,950 | 2,020 | 2,155 | 2,155 |
| Other | 21,936 | 22,390 | 19,864 | 21,617 | 24,061 | 24,236 |
| Total | 318,155 | 316,627 | 315,040 | 330,931 | 346,145 | 347,420 |
| Ending Stocks | | | | | | |
| China | 28,856 | 25,146 | 32,340 | 43,310 | 46,010 | 46,010 |
| Brazil | 29,419 | 27,378 | 36,819 | 27,966 | 33,512 | 33,516 |
| Argentina | 24,838 | 23,691 | 16,997 | 24,080 | 28,980 | 28,980 |
| United States | 6,994 | 7,468 | 7,190 | 9,308 | 12,797 | 12,797 |
| European Union | 1,455 | 1,446 | 1,098 | 1,126 | 1,505 | 1,306 |
| Other | 7,140 | 7,771 | 6,653 | 6,371 | 8,940 | 9,261 |
| Total | 98,702 | 92,900 | 101,097 | 112,161 | 131,744 | 131,870 |

Most countries are on an October/September Marketing Year (MY). The United States, Mexico, and Thailand are on a September/August MY. Canada is on an August/July MY. Paraguay is on a Jan/Dec MY.

Table 08: Soybean Meal: World Supply and Distribution

Thousand Metric Tons

| | 2020/21 | 2021/22 | 2022/23 | 2023/24 | Nov 2024/25 | Dec 2024/25 |
|-----------------------------|----------------|----------------|----------------|----------------|----------------|----------------|
| Production | | | | | | |
| China | 75,240 | 71,280 | 76,032 | 78,408 | 81,576 | 81,576 |
| United States | 45,872 | 47,005 | 47,621 | 49,120 | 51,480 | 51,480 |
| Brazil | 35,940 | 39,091 | 41,125 | 42,119 | 41,580 | 41,580 |
| Argentina | 31,318 | 30,287 | 23,648 | 28,509 | 31,200 | 31,980 |
| European Union | 12,482 | 12,166 | 11,297 | 11,455 | 12,008 | 12,008 |
| India | 8,000 | 6,800 | 8,240 | 9,040 | 8,800 | 8,800 |
| Mexico | 4,900 | 5,020 | 5,255 | 5,159 | 5,255 | 5,255 |
| Other | 35,999 | 36,508 | 34,241 | 36,048 | 39,589 | 39,804 |
| Total | 249,751 | 248,157 | 247,459 | 259,858 | 271,488 | 272,483 |
| Imports | | | | | | |
| European Union | 16,504 | 16,536 | 16,012 | 16,527 | 16,200 | 16,500 |
| Indonesia | 5,356 | 5,535 | 5,434 | 5,055 | 6,000 | 6,000 |
| Vietnam | 5,200 | 5,531 | 4,800 | 5,400 | 5,700 | 5,700 |
| Philippines | 2,839 | 2,895 | 2,826 | 3,025 | 3,150 | 3,150 |
| Thailand | 2,687 | 3,077 | 3,141 | 2,770 | 3,150 | 3,150 |
| Mexico | 1,854 | 1,827 | 1,668 | 1,935 | 2,200 | 2,200 |
| United Kingdom | 2,214 | 2,015 | 1,762 | 2,000 | 2,150 | 2,150 |
| Ecuador | 1,597 | 1,775 | 1,771 | 2,000 | 2,075 | 2,075 |
| Colombia | 1,607 | 1,831 | 1,603 | 1,585 | 2,000 | 2,000 |
| Iran | 2,000 | 1,362 | 1,185 | 2,985 | 1,775 | 1,975 |
| Other | 23,464 | 24,742 | 23,181 | 26,053 | 26,860 | 27,005 |
| Total | 65,322 | 67,126 | 63,383 | 69,335 | 71,260 | 71,905 |
| Exports | | | | | | |
| Argentina | 28,325 | 26,589 | 20,751 | 24,889 | 27,300 | 28,000 |
| Brazil | 16,577 | 20,207 | 21,334 | 22,722 | 20,500 | 20,500 |
| United States | 12,406 | 12,303 | 13,196 | 14,612 | 15,785 | 15,785 |
| Paraguay | 1,916 | 1,270 | 1,992 | 1,700 | 2,000 | 2,000 |
| Bolivia | 2,117 | 2,155 | 2,155 | 1,900 | 1,900 | 1,900 |
| Other | 8,096 | 6,298 | 7,643 | 8,605 | 7,185 | 7,185 |
| Total | 69,437 | 68,822 | 67,071 | 74,428 | 74,670 | 75,370 |
| Domestic Consumption | | | | | | |
| China | 74,425 | 71,100 | 75,050 | 77,150 | 80,550 | 80,550 |
| United States | 34,179 | 35,323 | 34,946 | 35,056 | 36,310 | 36,310 |
| European Union | 28,342 | 27,742 | 26,742 | 26,942 | 27,442 | 27,592 |
| Brazil | 18,800 | 19,700 | 20,300 | 20,000 | 21,000 | 21,000 |
| India | 5,850 | 6,273 | 6,625 | 7,075 | 7,550 | 7,535 |
| Mexico | 6,725 | 6,875 | 6,930 | 7,080 | 7,425 | 7,330 |
| Vietnam | 6,130 | 6,235 | 5,785 | 6,290 | 6,845 | 6,845 |
| Indonesia | 5,200 | 5,550 | 5,580 | 5,200 | 5,740 | 5,740 |
| Thailand | 4,745 | 4,900 | 4,750 | 4,575 | 4,895 | 4,895 |
| Iran | 3,750 | 3,500 | 3,550 | 4,810 | 4,540 | 4,740 |
| Russia | 3,475 | 3,500 | 3,650 | 3,900 | 4,100 | 4,100 |
| Japan | 3,615 | 3,610 | 3,550 | 3,580 | 3,690 | 3,690 |
| Argentina | 3,275 | 3,325 | 3,450 | 3,450 | 3,525 | 3,525 |
| Egypt | 3,500 | 3,700 | 2,700 | 2,950 | 3,400 | 3,400 |
| Philippines | 2,875 | 2,950 | 2,950 | 3,050 | 3,200 | 3,200 |
| Other | 40,894 | 41,668 | 40,325 | 42,733 | 45,972 | 46,147 |
| Total | 245,780 | 245,951 | 246,883 | 253,841 | 266,184 | 266,599 |
| Ending Stocks | | | | | | |
| Argentina | 2,289 | 2,797 | 2,311 | 2,482 | 2,867 | 2,947 |
| Brazil | 4,460 | 3,656 | 3,153 | 2,568 | 2,647 | 2,658 |
| European Union | 462 | 658 | 485 | 872 | 664 | 888 |
| China | 958 | 710 | 937 | 794 | 870 | 870 |
| Ukraine | 251 | 228 | 326 | 402 | 507 | 507 |
| Other | 7,583 | 8,464 | 6,189 | 7,207 | 8,734 | 8,874 |
| Total | 16,003 | 16,513 | 13,401 | 14,325 | 16,289 | 16,744 |

Most countries are on an October/September Marketing Year (MY). The Mexico and Thailand are on a September/August MY. Canada is on an August/July MY. Paraguay, Vietnam and the Philippines are on a January/December MY and Bolivia is on a March/February MY.

Table 09: Soybean Oil: World Supply and Distribution

Thousand Metric Tons

| | 2020/21 | 2021/22 | 2022/23 | 2023/24 | Nov 2024/25 | Dec 2024/25 |
|-----------------------------|---------------|---------------|---------------|---------------|----------------|----------------|
| Production | | | | | | |
| China | 17,024 | 16,128 | 17,203 | 17,741 | 18,458 | 18,458 |
| United States | 11,350 | 11,864 | 11,897 | 12,306 | 12,853 | 12,975 |
| Brazil | 9,335 | 10,153 | 10,580 | 10,940 | 10,800 | 10,800 |
| Argentina | 7,932 | 7,664 | 5,991 | 7,244 | 7,928 | 8,126 |
| European Union | 3,002 | 2,926 | 2,717 | 2,755 | 2,888 | 2,888 |
| India | 1,800 | 1,530 | 1,854 | 2,034 | 1,980 | 1,980 |
| Mexico | 1,145 | 1,171 | 1,227 | 1,205 | 1,227 | 1,227 |
| Other | 8,476 | 8,611 | 8,097 | 8,517 | 9,352 | 9,403 |
| Total | 60,064 | 60,047 | 59,566 | 62,742 | 65,486 | 65,857 |
| Imports | | | | | | |
| India | 3,251 | 4,231 | 3,968 | 3,308 | 3,600 | 3,800 |
| Bangladesh | 676 | 689 | 681 | 575 | 650 | 650 |
| European Union | 493 | 459 | 623 | 587 | 525 | 650 |
| Peru | 594 | 471 | 535 | 575 | 590 | 590 |
| Morocco | 507 | 529 | 514 | 500 | 560 | 560 |
| China | 1,221 | 291 | 395 | 381 | 400 | 500 |
| Algeria | 610 | 460 | 490 | 505 | 450 | 450 |
| Canada | 48 | 63 | 147 | 573 | 240 | 400 |
| Iran | 473 | 375 | 395 | 22 | 375 | 375 |
| Korea, South | 407 | 392 | 353 | 447 | 350 | 350 |
| Other | 3,412 | 3,381 | 2,713 | 2,978 | 3,470 | 3,465 |
| Total | 11,692 | 11,341 | 10,814 | 10,451 | 11,210 | 11,790 |
| Exports | | | | | | |
| Argentina | 6,137 | 4,873 | 4,137 | 5,533 | 5,600 | 5,800 |
| Brazil | 1,262 | 2,409 | 2,686 | 1,352 | 1,400 | 1,550 |
| European Union | 1,065 | 970 | 922 | 656 | 950 | 950 |
| Russia | 561 | 665 | 750 | 760 | 750 | 750 |
| Paraguay | 562 | 371 | 523 | 540 | 580 | 580 |
| United States | 786 | 803 | 171 | 280 | 272 | 499 |
| Bolivia | 525 | 523 | 620 | 430 | 480 | 480 |
| Other | 1,710 | 1,823 | 1,903 | 2,220 | 2,064 | 2,039 |
| Total | 12,608 | 12,437 | 11,712 | 11,771 | 12,096 | 12,648 |
| Domestic Consumption | | | | | | |
| China | 17,800 | 17,100 | 17,000 | 18,150 | 18,800 | 18,900 |
| United States | 10,574 | 11,262 | 12,070 | 12,356 | 12,792 | 12,701 |
| Brazil | 8,150 | 7,725 | 8,375 | 9,450 | 9,525 | 9,525 |
| India | 4,950 | 5,825 | 5,400 | 5,175 | 5,775 | 6,000 |
| European Union | 2,430 | 2,305 | 2,405 | 2,580 | 2,530 | 2,655 |
| Argentina | 2,045 | 2,650 | 2,060 | 1,710 | 2,360 | 2,360 |
| Mexico | 1,290 | 1,300 | 1,305 | 1,270 | 1,335 | 1,310 |
| Bangladesh | 1,205 | 1,100 | 985 | 935 | 1,020 | 1,020 |
| Iran | 850 | 850 | 900 | 725 | 900 | 900 |
| Algeria | 800 | 750 | 750 | 765 | 780 | 780 |
| Egypt | 1,010 | 960 | 560 | 480 | 710 | 710 |
| Canada | 230 | 240 | 320 | 685 | 435 | 635 |
| Korea, South | 600 | 600 | 565 | 600 | 585 | 585 |
| Peru | 535 | 555 | 540 | 540 | 575 | 575 |
| Morocco | 510 | 525 | 520 | 500 | 540 | 540 |
| Other | 5,932 | 6,014 | 4,992 | 5,227 | 6,072 | 6,077 |
| Total | 58,911 | 59,761 | 58,747 | 61,148 | 64,734 | 65,273 |
| Ending Stocks | | | | | | |
| China | 1,180 | 387 | 874 | 742 | 700 | 700 |
| United States | 967 | 903 | 729 | 681 | 697 | 683 |
| European Union | 440 | 550 | 563 | 669 | 596 | 602 |
| India | 265 | 186 | 597 | 748 | 331 | 513 |
| Brazil | 894 | 945 | 493 | 711 | 726 | 476 |
| Other | 2,169 | 2,134 | 1,770 | 1,749 | 1,920 | 2,052 |
| Total | 5,915 | 5,105 | 5,026 | 5,300 | 4,970 | 5,026 |

Most countries are on an October/September Marketing Year (MY). Mexico is on a September/August MY. Paraguay and Peru are on an January/December MY and Bolivia is on a March/February MY.

Table 10: Soybeans and Products: World Trade
Thousand Metric Tons

| Marketing Year | Meal, Soybean | | | Oil, Soybean | | | Oilseed, Soybean | | | |
|--------------------------|---------------|---------------|---------------|---------------|---------------|---------------|------------------|----------------|----------------|--|
| | 2022/23 | 2023/24 | 2024/25 | 2022/23 | 2023/24 | 2024/25 | 2022/23 | 2023/24 | 2024/25 | |
| Exports | | | | | | | | | | |
| North America | 13,576 | 14,943 | 16,001 | 346 | 516 | 649 | 58,115 | 50,982 | 54,470 | |
| South America | 46,244 | 51,217 | 52,407 | 8,034 | 7,897 | 8,460 | 107,435 | 120,389 | 120,305 | |
| South Asia | 1,897 | 1,969 | 1,301 | 11 | 16 | 30 | 22 | 8 | 25 | |
| India (Oct-Sep) | 1,871 | 1,966 | 1,300 | 11 | 16 | 15 | 22 | 8 | 25 | |
| Other | 5,354 | 6,299 | 5,661 | 3,321 | 3,342 | 3,509 | 6,181 | 6,093 | 7,173 | |
| World Total | 67,071 | 74,428 | 75,370 | 11,712 | 11,771 | 12,648 | 171,753 | 177,472 | 181,973 | |
| Imports | | | | | | | | | | |
| European Union (Oct-Sep) | 16,012 | 16,527 | 16,500 | 623 | 587 | 650 | 13,143 | 13,454 | 14,600 | |
| East Asia | 3,115 | 3,602 | 3,630 | 855 | 945 | 995 | 111,733 | 118,847 | 116,630 | |
| China (Oct-Sep) | 40 | 31 | 50 | 395 | 381 | 500 | 104,500 | 112,000 | 109,000 | |
| Japan (Oct-Sep) | 1,540 | 1,822 | 1,800 | 7 | 2 | 10 | 3,332 | 3,099 | 3,350 | |
| Korea, South (Oct-Sep) | 1,492 | 1,664 | 1,695 | 353 | 447 | 350 | 1,337 | 1,118 | 1,425 | |
| Taiwan (Oct-Sep) | 43 | 85 | 85 | 0 | 0 | 0 | 2,559 | 2,625 | 2,850 | |
| Southeast Asia | 18,229 | 17,976 | 19,940 | 267 | 248 | 255 | 8,285 | 8,998 | 9,927 | |
| Indonesia (Oct-Sep) | 5,434 | 5,055 | 6,000 | 31 | 34 | 40 | 2,308 | 2,567 | 2,650 | |
| Malaysia (Oct-Sep) | 1,346 | 1,279 | 1,425 | 88 | 89 | 90 | 684 | 683 | 750 | |
| Philippines (Jan-Dec) | 2,826 | 3,025 | 3,150 | 60 | 60 | 60 | 160 | 190 | 210 | |
| Thailand (Sep-Aug) | 3,141 | 2,770 | 3,150 | 0 | 0 | 0 | 3,238 | 3,428 | 3,875 | |
| Vietnam (Jan-Dec) | 4,800 | 5,400 | 5,700 | 75 | 50 | 50 | 1,858 | 2,100 | 2,400 | |
| North America | 3,450 | 3,905 | 4,262 | 414 | 955 | 802 | 7,609 | 7,358 | 7,458 | |
| Canada (Aug-Jul) | 1,207 | 1,347 | 1,450 | 147 | 573 | 400 | 500 | 335 | 350 | |
| United States (Oct-Sep) | 575 | 623 | 612 | 170 | 282 | 227 | 667 | 567 | 408 | |
| Canada (Aug-Jul) | 1,207 | 1,347 | 1,450 | 147 | 573 | 400 | 500 | 335 | 350 | |
| Mexico (Sep-Aug) | 1,668 | 1,935 | 2,200 | 97 | 100 | 175 | 6,442 | 6,456 | 6,700 | |
| South America | 6,821 | 7,421 | 8,035 | 1,202 | 1,463 | 1,463 | 10,095 | 9,631 | 7,325 | |
| Argentina (Oct-Sep) | 67 | 1 | 10 | 0 | 2 | 0 | 9,059 | 7,787 | 6,000 | |
| Brazil (Oct-Sep) | 6 | 18 | 10 | 29 | 80 | 40 | 154 | 867 | 150 | |
| Paraguay (Jan-Dec) | 5 | 0 | 0 | 1 | 2 | 1 | 10 | 20 | 20 | |
| Brazil (Oct-Sep) | 6 | 18 | 10 | 29 | 80 | 40 | 154 | 867 | 150 | |
| Colombia (Oct-Sep) | 1,603 | 1,585 | 2,000 | 242 | 317 | 345 | 444 | 447 | 640 | |
| Central America | 1,608 | 1,796 | 1,900 | 166 | 218 | 250 | 313 | 332 | 377 | |
| Caribbean | 742 | 811 | 840 | 192 | 276 | 266 | 31 | 58 | 55 | |
| Middle East | 5,317 | 8,433 | 7,285 | 512 | 149 | 546 | 6,693 | 6,867 | 8,081 | |
| Iran (Oct-Sep) | 1,185 | 2,985 | 1,975 | 395 | 22 | 375 | 2,803 | 2,554 | 3,250 | |
| Israel (Oct-Sep) | 308 | 325 | 350 | 10 | 20 | 20 | 297 | 330 | 360 | |
| Syria (Jan-Dec) | 69 | 150 | 90 | 1 | 1 | 1 | 1 | 1 | 1 | |
| Turkey (Oct-Sep) | 1,400 | 1,625 | 1,650 | 2 | 0 | 0 | 2,888 | 3,252 | 3,500 | |
| North Africa | 2,425 | 2,017 | 2,235 | 1,238 | 1,066 | 1,250 | 3,957 | 5,392 | 6,300 | |
| Egypt (Oct-Sep) | 892 | 500 | 750 | 198 | 35 | 150 | 1,992 | 3,200 | 3,600 | |
| Other Europe | 2,254 | 2,495 | 2,712 | 170 | 189 | 211 | 1,438 | 1,422 | 1,557 | |
| United Kingdom (Oct-Sep) | 1,762 | 2,000 | 2,150 | 159 | 175 | 200 | 910 | 925 | 950 | |
| Other | 3,410 | 4,352 | 4,566 | 5,175 | 4,355 | 5,102 | 4,588 | 5,297 | 5,872 | |
| World Total | 63,383 | 69,335 | 71,905 | 10,814 | 10,451 | 11,790 | 167,885 | 177,656 | 178,182 | |

Table 11: Palm Oil: World Supply and Distribution

Thousand Metric Tons

| | 2020/21 | 2021/22 | 2022/23 | 2023/24 | Nov 2024/25 | Dec 2024/25 |
|-----------------------------|---------------|---------------|---------------|---------------|----------------|----------------|
| Production | | | | | | |
| Indonesia | 43,500 | 42,000 | 45,000 | 43,000 | 46,500 | 46,500 |
| Malaysia | 17,854 | 18,152 | 18,389 | 19,710 | 19,800 | 19,300 |
| Thailand | 2,963 | 3,376 | 3,328 | 3,600 | 3,700 | 3,700 |
| Colombia | 1,628 | 1,762 | 1,853 | 1,875 | 1,950 | 1,900 |
| Nigeria | 1,275 | 1,400 | 1,400 | 1,500 | 1,500 | 1,500 |
| Other | 6,145 | 6,482 | 6,655 | 6,574 | 6,729 | 6,729 |
| Total | 73,365 | 73,172 | 76,625 | 76,259 | 80,179 | 79,629 |
| Imports | | | | | | |
| India | 8,411 | 8,004 | 10,045 | 8,886 | 9,900 | 9,400 |
| China | 6,818 | 4,387 | 6,190 | 4,377 | 5,900 | 5,150 |
| European Union | 5,951 | 5,015 | 4,548 | 3,800 | 4,000 | 4,000 |
| Pakistan | 3,500 | 2,824 | 3,685 | 3,100 | 3,300 | 3,300 |
| United States | 1,576 | 1,588 | 1,888 | 1,877 | 1,900 | 1,900 |
| Bangladesh | 1,285 | 1,339 | 1,610 | 1,676 | 1,600 | 1,600 |
| Egypt | 1,127 | 1,154 | 1,052 | 1,175 | 1,200 | 1,200 |
| Vietnam | 933 | 995 | 1,050 | 1,100 | 1,100 | 1,100 |
| Kenya | 839 | 789 | 848 | 1,000 | 1,075 | 1,075 |
| Philippines | 1,192 | 1,177 | 892 | 1,100 | 1,000 | 1,000 |
| Other | 15,230 | 14,323 | 15,316 | 14,842 | 15,007 | 14,857 |
| Total | 46,862 | 41,595 | 47,124 | 42,933 | 45,982 | 44,582 |
| Exports | | | | | | |
| Indonesia | 27,321 | 22,321 | 28,077 | 22,273 | 25,200 | 24,200 |
| Malaysia | 15,878 | 15,527 | 15,355 | 16,530 | 16,300 | 15,900 |
| Thailand | 624 | 971 | 902 | 900 | 1,000 | 1,000 |
| Guatemala | 776 | 792 | 883 | 750 | 945 | 945 |
| Papua New Guinea | 745 | 834 | 813 | 800 | 820 | 820 |
| Other | 3,212 | 3,456 | 3,491 | 3,548 | 3,719 | 3,719 |
| Total | 48,556 | 43,901 | 49,521 | 44,801 | 47,984 | 46,584 |
| Domestic Consumption | | | | | | |
| Indonesia | 15,700 | 17,425 | 19,125 | 21,075 | 21,760 | 22,325 |
| India | 9,225 | 8,150 | 8,900 | 8,990 | 10,450 | 10,150 |
| China | 6,550 | 5,100 | 5,600 | 4,950 | 5,800 | 5,150 |
| European Union | 6,360 | 4,850 | 4,400 | 3,830 | 3,850 | 3,850 |
| Malaysia | 3,242 | 3,300 | 3,975 | 3,667 | 3,845 | 3,715 |
| Pakistan | 3,470 | 3,145 | 3,595 | 3,120 | 3,315 | 3,315 |
| Thailand | 2,485 | 2,335 | 2,585 | 2,625 | 2,635 | 2,680 |
| Nigeria | 1,650 | 1,715 | 1,790 | 1,865 | 1,950 | 1,950 |
| United States | 1,598 | 1,561 | 1,876 | 1,907 | 1,847 | 1,847 |
| Bangladesh | 1,430 | 1,470 | 1,600 | 1,575 | 1,570 | 1,570 |
| Colombia | 1,220 | 1,380 | 1,490 | 1,535 | 1,565 | 1,525 |
| Egypt | 1,175 | 1,175 | 1,060 | 1,160 | 1,170 | 1,170 |
| Philippines | 1,255 | 1,270 | 1,020 | 1,110 | 1,110 | 1,110 |
| Vietnam | 950 | 927 | 947 | 1,007 | 1,025 | 1,025 |
| Brazil | 870 | 840 | 820 | 870 | 865 | 865 |
| Other | 15,287 | 14,777 | 15,489 | 15,809 | 16,101 | 16,076 |
| Total | 72,467 | 69,420 | 74,272 | 75,095 | 78,858 | 78,323 |
| Ending Stocks | | | | | | |
| Indonesia | 5,055 | 7,309 | 5,107 | 4,760 | 4,875 | 4,735 |
| India | 843 | 972 | 2,419 | 2,615 | 2,397 | 2,167 |
| Malaysia | 1,756 | 2,318 | 2,312 | 2,014 | 2,069 | 1,949 |
| Colombia | 734 | 836 | 876 | 882 | 666 | 732 |
| Thailand | 494 | 566 | 409 | 486 | 488 | 508 |
| Other | 6,343 | 4,670 | 5,504 | 5,166 | 5,255 | 5,136 |
| Total | 15,225 | 16,671 | 16,627 | 15,923 | 15,750 | 15,227 |

Table 12: Rapeseed and Products: World Supply and Distribution
Thousand Metric Tons

| Marketing Year | Meal, Rapeseed | | | Oil, Rapeseed | | | Oilseed, Rapeseed | | | |
|-----------------------------|----------------|---------------|---------------|---------------|---------------|---------------|-------------------|---------------|---------------|---------------|
| | 2022/23 | 2023/24 | 2024/25 | 2022/23 | 2023/24 | 2024/25 | 2022/23 | 2023/24 | 2024/25 | |
| Production | | | | | | | | | | |
| China | (Oct-Sep) | 10,917 | 11,684 | 11,507 | 7,215 | 7,722 | 7,605 | 15,531 | 16,321 | 15,800 |
| India | (Oct-Sep) | 6,015 | 6,219 | 6,368 | 3,840 | 3,975 | 4,070 | 11,200 | 11,600 | 12,100 |
| Canada | (Aug-Jul) | 5,810 | 6,408 | 6,908 | 4,151 | 4,706 | 5,092 | 18,850 | 19,192 | 18,800 |
| Japan | (Oct-Sep) | 1,146 | 1,203 | 1,089 | 853 | 896 | 822 | 4 | 4 | 4 |
| European Union | (Jul-Jun) | 13,794 | 13,908 | 13,509 | 10,164 | 10,248 | 9,954 | 19,612 | 19,934 | 17,240 |
| Other | | 9,537 | 9,908 | 9,722 | 6,634 | 6,922 | 6,743 | 23,707 | 22,834 | 22,236 |
| World Total | | 47,219 | 49,330 | 49,103 | 32,857 | 34,469 | 34,286 | 88,904 | 89,885 | 86,180 |
| Imports | | | | | | | | | | |
| China | (Oct-Sep) | 2,030 | 2,842 | 3,000 | 1,998 | 2,040 | 1,900 | 5,335 | 5,486 | 3,000 |
| India | (Oct-Sep) | 2 | 17 | 2 | 6 | 6 | 5 | 0 | 0 | 0 |
| Canada | (Aug-Jul) | 6 | 3 | 10 | 26 | 19 | 20 | 151 | 276 | 100 |
| Japan | (Oct-Sep) | 20 | 5 | 10 | 13 | 8 | 15 | 1,976 | 2,117 | 1,900 |
| European Union | (Jul-Jun) | 843 | 823 | 1,000 | 402 | 463 | 450 | 6,841 | 5,457 | 6,850 |
| Other | | 6,388 | 6,222 | 6,429 | 4,448 | 5,006 | 5,334 | 5,742 | 4,978 | 4,704 |
| World Total | | 9,289 | 9,912 | 10,451 | 6,893 | 7,542 | 7,724 | 20,045 | 18,314 | 16,554 |
| Exports | | | | | | | | | | |
| China | (Oct-Sep) | 24 | 7 | 10 | 4 | 21 | 5 | 0 | 0 | 0 |
| India | (Oct-Sep) | 1,920 | 1,608 | 1,500 | 11 | 10 | 10 | 0 | 0 | 0 |
| Canada | (Aug-Jul) | 5,308 | 5,636 | 6,300 | 3,018 | 3,419 | 4,100 | 7,951 | 6,747 | 6,750 |
| Japan | (Oct-Sep) | 0 | 0 | 0 | 5 | 4 | 5 | 0 | 0 | 0 |
| European Union | (Jul-Jun) | 795 | 869 | 650 | 671 | 747 | 600 | 549 | 534 | 300 |
| Other | | 1,730 | 2,031 | 2,055 | 2,840 | 3,216 | 3,060 | 11,053 | 10,731 | 9,818 |
| World Total | | 9,777 | 10,151 | 10,515 | 6,549 | 7,417 | 7,780 | 19,553 | 18,012 | 16,868 |
| Domestic Consumption | | | | | | | | | | |
| China | (Oct-Sep) | 12,923 | 14,519 | 14,497 | 8,900 | 9,750 | 9,700 | 19,125 | 20,700 | 20,400 |
| India | (Oct-Sep) | 4,350 | 4,600 | 4,840 | 3,680 | 3,980 | 4,080 | 11,300 | 11,650 | 12,025 |
| Canada | (Aug-Jul) | 525 | 740 | 605 | 1,055 | 1,250 | 1,230 | 10,673 | 11,831 | 12,692 |
| Japan | (Oct-Sep) | 1,168 | 1,205 | 1,100 | 890 | 890 | 845 | 2,005 | 2,105 | 1,915 |
| European Union | (Jul-Jun) | 13,800 | 13,900 | 13,850 | 9,925 | 9,950 | 9,800 | 24,850 | 25,050 | 24,300 |
| Other | | 14,204 | 14,006 | 14,145 | 8,227 | 8,713 | 9,069 | 17,232 | 17,703 | 17,449 |
| World Total | | 46,970 | 48,970 | 49,037 | 32,677 | 34,533 | 34,724 | 85,185 | 89,039 | 88,781 |
| Ending Stocks | | | | | | | | | | |
| China | (Oct-Sep) | 0 | 0 | 0 | 1,150 | 1,141 | 941 | 2,609 | 3,716 | 2,116 |
| India | (Oct-Sep) | 197 | 225 | 255 | 402 | 393 | 378 | 619 | 569 | 644 |
| Canada | (Aug-Jul) | 134 | 169 | 182 | 629 | 685 | 467 | 1,858 | 2,748 | 2,206 |
| Japan | (Oct-Sep) | 16 | 19 | 18 | 17 | 27 | 14 | 182 | 198 | 187 |
| European Union | (Jul-Jun) | 429 | 391 | 400 | 343 | 357 | 361 | 1,821 | 1,628 | 1,118 |
| Other | | 476 | 569 | 520 | 570 | 569 | 517 | 1,872 | 1,250 | 923 |
| World Total | | 1,252 | 1,373 | 1,375 | 3,111 | 3,172 | 2,678 | 8,961 | 10,109 | 7,194 |

Table 13: Sunflowerseed and Products: World Supply and Distribution
Thousand Metric Tons

| Marketing Year | Oilseed, Sunflowerseed | | | Meal, Sunflowerseed | | | Oil, Sunflowerseed | | | |
|-----------------------------|------------------------|---------------|---------------|---------------------|---------------|---------------|--------------------|---------------|---------------|---------------|
| | 2022/23 | 2023/24 | 2024/25 | 2022/23 | 2023/24 | 2024/25 | 2022/23 | 2023/24 | 2024/25 | |
| Production | | | | | | | | | | |
| Argentina | (Mar-Feb) | 5,019 | 3,895 | 4,000 | 1,789 | 1,660 | 1,605 | 1,752 | 1,623 | 1,570 |
| Russia | (Sep-Aug) | 16,254 | 17,100 | 16,300 | 6,453 | 6,780 | 6,574 | 6,484 | 6,815 | 6,608 |
| Turkey | (Sep-Aug) | 1,900 | 1,550 | 1,375 | 1,334 | 872 | 818 | 1,066 | 696 | 653 |
| Ukraine | (Sep-Aug) | 12,200 | 15,500 | 12,900 | 5,782 | 6,484 | 5,183 | 6,020 | 6,751 | 5,398 |
| European Union | (Oct-Sep) | 9,386 | 10,125 | 8,780 | 5,135 | 4,973 | 4,378 | 4,014 | 3,887 | 3,422 |
| Other | | 8,021 | 7,859 | 7,157 | 2,573 | 2,513 | 2,449 | 2,386 | 2,362 | 2,306 |
| World Total | | 52,780 | 56,029 | 50,512 | 23,066 | 23,282 | 21,007 | 21,722 | 22,134 | 19,957 |
| Imports | | | | | | | | | | |
| Argentina | (Mar-Feb) | 1 | 1 | 0 | 0 | 0 | 0 | 0 | 0 | 0 |
| Russia | (Sep-Aug) | 75 | 50 | 50 | 5 | 5 | 5 | 1 | 1 | 1 |
| Turkey | (Sep-Aug) | 941 | 310 | 450 | 879 | 1,312 | 950 | 1,711 | 1,491 | 1,250 |
| Ukraine | (Sep-Aug) | 31 | 20 | 30 | 13 | 13 | 10 | 1 | 1 | 0 |
| European Union | (Oct-Sep) | 1,460 | 828 | 410 | 2,756 | 3,155 | 2,700 | 2,103 | 2,964 | 2,175 |
| Other | | 1,264 | 1,362 | 1,231 | 4,887 | 5,494 | 4,763 | 8,744 | 9,294 | 7,328 |
| World Total | | 3,772 | 2,571 | 2,171 | 8,540 | 9,979 | 8,428 | 12,560 | 13,751 | 10,754 |
| Exports | | | | | | | | | | |
| Argentina | (Mar-Feb) | 94 | 150 | 150 | 1,128 | 1,150 | 1,050 | 1,115 | 950 | 900 |
| Russia | (Sep-Aug) | 260 | 450 | 350 | 2,250 | 2,650 | 2,275 | 4,000 | 4,400 | 4,075 |
| Turkey | (Sep-Aug) | 102 | 102 | 125 | 78 | 45 | 20 | 1,102 | 1,189 | 600 |
| Ukraine | (Sep-Aug) | 1,856 | 314 | 230 | 3,973 | 4,653 | 4,100 | 5,624 | 6,264 | 5,000 |
| European Union | (Oct-Sep) | 595 | 446 | 350 | 1,001 | 956 | 800 | 1,221 | 990 | 650 |
| Other | | 1,109 | 1,409 | 1,093 | 725 | 750 | 726 | 1,213 | 1,247 | 1,106 |
| World Total | | 4,016 | 2,871 | 2,298 | 9,155 | 10,204 | 8,971 | 14,275 | 15,040 | 12,331 |
| Domestic Consumption | | | | | | | | | | |
| Argentina | (Mar-Feb) | 4,553 | 4,055 | 3,950 | 600 | 550 | 550 | 652 | 672 | 672 |
| Russia | (Sep-Aug) | 16,180 | 16,980 | 16,320 | 3,900 | 4,125 | 4,350 | 2,425 | 2,525 | 2,575 |
| Turkey | (Sep-Aug) | 2,672 | 1,802 | 1,702 | 2,025 | 2,175 | 1,770 | 1,290 | 1,465 | 1,290 |
| Ukraine | (Sep-Aug) | 14,175 | 15,875 | 12,725 | 1,700 | 1,525 | 1,400 | 415 | 440 | 455 |
| European Union | (Oct-Sep) | 10,535 | 10,235 | 9,135 | 6,860 | 7,060 | 6,410 | 5,213 | 5,413 | 5,238 |
| Other | | 8,121 | 7,734 | 7,481 | 6,720 | 7,230 | 6,524 | 9,550 | 10,488 | 8,876 |
| World Total | | 56,236 | 56,681 | 51,313 | 21,805 | 22,665 | 21,004 | 19,545 | 21,003 | 19,106 |
| Ending Stocks | | | | | | | | | | |
| Argentina | (Mar-Feb) | 1,084 | 775 | 675 | 292 | 252 | 257 | 329 | 330 | 328 |
| Russia | (Sep-Aug) | 907 | 627 | 307 | 397 | 407 | 361 | 346 | 237 | 196 |
| Turkey | (Sep-Aug) | 168 | 124 | 122 | 223 | 187 | 165 | 611 | 144 | 157 |
| Ukraine | (Sep-Aug) | 845 | 176 | 151 | 247 | 566 | 259 | 76 | 124 | 67 |
| European Union | (Oct-Sep) | 407 | 679 | 384 | 320 | 432 | 300 | 328 | 776 | 485 |
| Other | | 736 | 814 | 628 | 242 | 269 | 231 | 1,417 | 1,338 | 990 |
| World Total | | 4,147 | 3,195 | 2,267 | 1,721 | 2,113 | 1,573 | 3,107 | 2,949 | 2,223 |

Table 14: Minor Vegetable Oils: World Supply and Distribution
Thousand Metric Tons

| Marketing Year | Oil, Peanut | | | Oil, Cottonseed | | | Oil, Olive | | | |
|-----------------------------|-------------|--------------|--------------|-----------------|--------------|--------------|--------------|--------------|--------------|--------------|
| | 2022/23 | 2023/24 | 2024/25 | 2022/23 | 2023/24 | 2024/25 | 2022/23 | 2023/24 | 2024/25 | |
| Production | | | | | | | | | | |
| China | (Oct-Sep) | 3,136 | 3,136 | 3,104 | 1,484 | 1,368 | 1,368 | 8 | 8 | 8 |
| India | (Oct-Sep) | 1,221 | 1,123 | 1,256 | 1,369 | 1,355 | 1,297 | nr | nr | nr |
| Turkey | (Nov-Oct) | 7 | 7 | 7 | 290 | 193 | 238 | 380 | 190 | 350 |
| United States | (Aug-Jul) | 120 | 96 | 120 | 166 | 163 | 170 | 9 | 12 | 10 |
| European Union | (Oct-Sep) | 13 | 13 | 13 | 33 | 24 | 29 | 1,392 | 1,525 | 1,950 |
| Other | | 1,722 | 1,683 | 1,766 | 1,550 | 1,864 | 1,918 | 654 | 682 | 752 |
| World Total | | 6,219 | 6,058 | 6,266 | 4,892 | 4,967 | 5,020 | 2,443 | 2,417 | 3,070 |
| Imports | | | | | | | | | | |
| China | (Oct-Sep) | 292 | 247 | 250 | 0 | 0 | 0 | 35 | 23 | 45 |
| India | (Oct-Sep) | 0 | 0 | 0 | 1 | 0 | 5 | nr | nr | nr |
| Turkey | (Nov-Oct) | 0 | 0 | 0 | 1 | 2 | 2 | 65 | 55 | 40 |
| United States | (Aug-Jul) | 28 | 17 | 27 | 7 | 1 | 2 | 371 | 386 | 410 |
| European Union | (Oct-Sep) | 44 | 45 | 55 | 2 | 9 | 5 | 193 | 250 | 200 |
| Other | | 28 | 30 | 29 | 72 | 73 | 58 | 423 | 378 | 470 |
| World Total | | 392 | 339 | 361 | 83 | 85 | 72 | 1,087 | 1,092 | 1,165 |
| Exports | | | | | | | | | | |
| China | (Oct-Sep) | 10 | 10 | 10 | 7 | 6 | 5 | 0 | 0 | 0 |
| India | (Oct-Sep) | 125 | 195 | 100 | 0 | 1 | 0 | nr | nr | nr |
| Turkey | (Nov-Oct) | 0 | 0 | 0 | 8 | 5 | 5 | 187 | 140 | 180 |
| United States | (Aug-Jul) | 6 | 6 | 7 | 32 | 10 | 23 | 6 | 9 | 10 |
| European Union | (Oct-Sep) | 6 | 7 | 6 | 1 | 1 | 1 | 659 | 650 | 675 |
| Other | | 199 | 252 | 270 | 50 | 55 | 63 | 356 | 365 | 359 |
| World Total | | 346 | 470 | 393 | 98 | 78 | 97 | 1,208 | 1,164 | 1,224 |
| Domestic Consumption | | | | | | | | | | |
| China | (Oct-Sep) | 3,418 | 3,373 | 3,344 | 1,477 | 1,362 | 1,363 | 43 | 31 | 53 |
| India | (Oct-Sep) | 1,060 | 1,005 | 1,125 | 1,361 | 1,345 | 1,320 | nr | nr | nr |
| Turkey | (Nov-Oct) | 7 | 7 | 7 | 280 | 190 | 230 | 190 | 160 | 195 |
| United States | (Aug-Jul) | 141 | 115 | 137 | 141 | 154 | 149 | 374 | 389 | 410 |
| European Union | (Oct-Sep) | 53 | 50 | 62 | 34 | 32 | 33 | 1,165 | 1,140 | 1,340 |
| Other | | 1,545 | 1,497 | 1,515 | 1,591 | 1,855 | 1,888 | 803 | 760 | 832 |
| World Total | | 6,224 | 6,047 | 6,190 | 4,884 | 4,938 | 4,983 | 2,575 | 2,480 | 2,830 |
| Ending Stocks | | | | | | | | | | |
| China | (Oct-Sep) | 0 | 0 | 0 | 0 | 0 | 0 | 0 | 0 | 0 |
| India | (Oct-Sep) | 264 | 187 | 218 | 37 | 46 | 28 | nr | nr | nr |
| Turkey | (Nov-Oct) | 0 | 0 | 0 | 16 | 16 | 21 | 81 | 26 | 41 |
| United States | (Aug-Jul) | 16 | 8 | 11 | 23 | 23 | 23 | 0 | 0 | 0 |
| European Union | (Oct-Sep) | 3 | 4 | 4 | 0 | 0 | 0 | 210 | 195 | 330 |
| Other | | 95 | 59 | 69 | 79 | 106 | 131 | 170 | 105 | 136 |
| World Total | | 378 | 258 | 302 | 155 | 191 | 203 | 461 | 326 | 507 |

Table 15: World Oilseeds and Products Supply and Distribution

Million Metric Tons

| | Area Harvested | Beginning Stocks | Production | Imports | Total Supply | Exports | Food Use Dom. | Domestic Consumpti | Ending Stocks |
|-----------------------------|----------------|------------------|------------|---------|--------------|---------|---------------|--------------------|---------------|
| Major Oilseeds | | | | | | | | | |
| 2011/12 | 249.06 | 89.03 | 447.09 | 113.33 | 649.44 | 111.07 | 36.08 | 466.08 | 72.28 |
| 2012/13 | 257.78 | 72.28 | 475.36 | 114.72 | 662.37 | 118.26 | 36.50 | 471.97 | 72.15 |
| 2013/14 | 261.63 | 72.15 | 503.77 | 133.89 | 709.80 | 133.97 | 37.35 | 494.72 | 81.11 |
| 2014/15 | 268.04 | 81.11 | 539.98 | 143.67 | 764.76 | 147.52 | 38.85 | 521.31 | 95.93 |
| 2015/16 | 265.73 | 95.93 | 524.67 | 154.46 | 775.06 | 153.93 | 40.16 | 527.58 | 93.55 |
| 2016/17 | 270.49 | 93.63 | 576.84 | 167.65 | 838.12 | 171.61 | 41.58 | 555.87 | 110.65 |
| 2017/18 | 281.65 | 110.65 | 583.42 | 176.53 | 870.59 | 177.49 | 43.04 | 574.60 | 118.50 |
| 2018/19 | 282.71 | 118.50 | 601.14 | 168.04 | 887.68 | 172.08 | 43.78 | 581.63 | 133.98 |
| 2019/20 | 281.50 | 133.98 | 582.33 | 189.86 | 906.17 | 191.67 | 45.37 | 602.25 | 112.24 |
| 2020/21 | 288.65 | 112.24 | 610.41 | 190.96 | 913.61 | 192.33 | 46.76 | 607.08 | 114.20 |
| 2021/22 | 296.76 | 114.20 | 611.16 | 177.50 | 902.86 | 179.57 | 47.87 | 610.88 | 112.41 |
| 2022/23 | 304.62 | 112.41 | 637.40 | 197.57 | 947.37 | 201.37 | 49.17 | 625.66 | 120.35 |
| 2023/24 | 308.81 | 120.35 | 657.49 | 204.31 | 982.15 | 204.92 | 50.19 | 645.78 | 131.46 |
| 2024/25 | 313.88 | 131.46 | 683.38 | 202.54 | 1,017.38 | 207.34 | 51.48 | 662.82 | 147.22 |
| Major Protein Meals | | | | | | | | | |
| 2011/12 | nr | 13.13 | 267.42 | 79.41 | 359.96 | 81.13 | 0.40 | 263.88 | 14.94 |
| 2012/13 | nr | 14.94 | 269.36 | 75.26 | 359.56 | 79.48 | 0.43 | 266.47 | 13.61 |
| 2013/14 | nr | 13.61 | 282.52 | 80.97 | 377.09 | 83.54 | 0.44 | 278.35 | 15.21 |
| 2014/15 | nr | 15.21 | 300.67 | 82.94 | 398.82 | 86.61 | 0.45 | 293.85 | 18.36 |
| 2015/16 | nr | 18.36 | 305.85 | 84.15 | 408.36 | 87.39 | 0.47 | 302.66 | 18.30 |
| 2016/17 | nr | 18.65 | 320.64 | 85.55 | 424.85 | 89.73 | 0.52 | 315.91 | 19.21 |
| 2017/18 | nr | 19.21 | 331.21 | 87.35 | 437.77 | 90.99 | 0.54 | 325.98 | 20.80 |
| 2018/19 | nr | 20.80 | 333.01 | 90.29 | 444.09 | 95.29 | 0.61 | 329.18 | 19.62 |
| 2019/20 | nr | 19.62 | 346.54 | 91.77 | 457.92 | 96.06 | 0.70 | 341.03 | 20.83 |
| 2020/21 | nr | 20.83 | 351.01 | 92.82 | 464.65 | 97.45 | 0.77 | 347.41 | 19.79 |
| 2021/22 | nr | 19.79 | 350.52 | 94.18 | 464.49 | 96.55 | 0.81 | 347.74 | 20.20 |
| 2022/23 | nr | 20.20 | 357.05 | 93.24 | 470.49 | 97.65 | 0.81 | 355.43 | 17.40 |
| 2023/24 | nr | 17.40 | 372.33 | 100.85 | 490.58 | 106.24 | 0.87 | 365.57 | 18.77 |
| 2024/25 | nr | 18.77 | 383.42 | 102.79 | 504.97 | 107.06 | 0.90 | 377.18 | 20.73 |
| Major Vegetable Oils | | | | | | | | | |
| 2011/12 | 18.52 | 20.15 | 157.86 | 61.32 | 239.32 | 64.73 | 115.41 | 151.12 | 23.48 |
| 2012/13 | 19.23 | 23.48 | 161.23 | 64.77 | 249.48 | 68.27 | 120.25 | 157.66 | 23.54 |
| 2013/14 | 20.12 | 23.54 | 171.58 | 66.65 | 261.76 | 70.12 | 125.19 | 165.95 | 25.69 |
| 2014/15 | 20.96 | 25.69 | 177.49 | 70.17 | 273.35 | 76.55 | 130.35 | 169.84 | 26.95 |
| 2015/16 | 22.06 | 26.95 | 176.36 | 70.43 | 273.75 | 73.84 | 134.60 | 176.88 | 23.02 |
| 2016/17 | 23.18 | 23.03 | 189.14 | 76.19 | 288.35 | 82.01 | 138.45 | 182.43 | 23.91 |
| 2017/18 | 24.14 | 23.91 | 198.75 | 76.13 | 298.79 | 80.99 | 142.33 | 190.95 | 26.85 |
| 2018/19 | 24.60 | 26.85 | 204.41 | 82.09 | 313.35 | 86.88 | 145.43 | 197.98 | 28.50 |
| 2019/20 | 25.04 | 28.50 | 208.05 | 82.80 | 319.35 | 87.17 | 148.50 | 201.34 | 30.84 |
| 2020/21 | 25.37 | 30.84 | 208.03 | 81.19 | 320.06 | 85.79 | 151.14 | 204.56 | 29.71 |
| 2021/22 | 25.94 | 29.71 | 208.60 | 74.23 | 312.54 | 79.69 | 149.51 | 202.75 | 30.10 |
| 2022/23 | 27.05 | 30.10 | 216.79 | 83.57 | 330.47 | 88.86 | 152.73 | 210.94 | 30.67 |
| 2023/24 | 27.36 | 30.67 | 221.48 | 80.87 | 333.02 | 85.84 | 156.09 | 217.24 | 29.94 |
| 2024/25 | 27.87 | 29.94 | 226.81 | 81.16 | 337.90 | 86.12 | 160.10 | 223.88 | 27.90 |

Based on the aggregate of different marketing years

Table 16: World Soybeans and Products Supply and Distribution

Million Metric Tons

| | Area Harvested | Beginning Stocks | Production | Imports | Total Supply | Exports | Crush | Domestic Consumpti | Ending Stocks |
|-------------------------|----------------|------------------|------------|---------|--------------|---------|--------|--------------------|---------------|
| Oilseed, Soybean | | | | | | | | | |
| 2011/12 | 103.05 | 73.50 | 241.17 | 94.66 | 409.32 | 91.83 | 229.35 | 259.44 | 58.06 |
| 2012/13 | 110.37 | 58.06 | 268.92 | 97.13 | 424.11 | 100.41 | 232.08 | 265.39 | 58.31 |
| 2013/14 | 113.20 | 58.31 | 283.32 | 113.28 | 454.92 | 112.80 | 243.23 | 278.28 | 63.84 |
| 2014/15 | 119.16 | 63.84 | 321.44 | 124.36 | 509.64 | 126.44 | 265.26 | 303.89 | 79.31 |
| 2015/16 | 120.88 | 79.31 | 316.07 | 134.04 | 529.43 | 132.84 | 275.76 | 316.89 | 79.69 |
| 2016/17 | 120.55 | 79.72 | 350.81 | 145.00 | 575.52 | 147.74 | 288.38 | 332.16 | 95.63 |
| 2017/18 | 125.19 | 95.63 | 343.63 | 154.17 | 593.43 | 153.40 | 295.65 | 340.28 | 99.74 |
| 2018/19 | 126.05 | 99.74 | 363.45 | 145.92 | 609.12 | 149.22 | 299.13 | 345.65 | 114.25 |
| 2019/20 | 123.97 | 114.25 | 341.72 | 165.30 | 621.27 | 165.82 | 312.63 | 360.23 | 95.22 |
| 2020/21 | 130.18 | 95.22 | 369.60 | 166.20 | 631.02 | 165.18 | 318.16 | 367.14 | 98.70 |
| 2021/22 | 131.57 | 98.70 | 360.54 | 154.47 | 613.71 | 154.44 | 316.63 | 366.38 | 92.90 |
| 2022/23 | 137.33 | 92.90 | 378.16 | 167.89 | 638.95 | 171.75 | 315.04 | 366.10 | 101.10 |
| 2023/24 | 140.38 | 101.10 | 394.87 | 177.66 | 673.63 | 177.47 | 330.93 | 383.99 | 112.16 |
| 2024/25 | 146.49 | 112.16 | 427.14 | 178.18 | 717.48 | 181.97 | 347.42 | 403.64 | 131.87 |
| Meal, Soybean | | | | | | | | | |
| 2011/12 | nr | 9.49 | 180.94 | 57.21 | 247.64 | 58.73 | 229.36 | 177.89 | 11.03 |
| 2012/13 | nr | 11.03 | 182.31 | 54.57 | 247.92 | 58.50 | 232.18 | 178.73 | 10.69 |
| 2013/14 | nr | 10.69 | 190.59 | 58.49 | 259.77 | 60.86 | 243.33 | 187.17 | 11.74 |
| 2014/15 | nr | 11.74 | 208.63 | 61.40 | 281.77 | 64.64 | 265.27 | 202.48 | 14.66 |
| 2015/16 | nr | 14.66 | 216.34 | 63.35 | 294.34 | 65.85 | 275.77 | 213.75 | 14.73 |
| 2016/17 | nr | 14.90 | 226.28 | 61.72 | 302.90 | 65.41 | 288.39 | 222.27 | 15.23 |
| 2017/18 | nr | 15.23 | 232.78 | 62.89 | 310.90 | 65.80 | 295.66 | 228.93 | 16.18 |
| 2018/19 | nr | 16.18 | 234.00 | 63.55 | 313.73 | 68.06 | 299.13 | 230.49 | 15.19 |
| 2019/20 | nr | 15.19 | 245.31 | 63.99 | 324.49 | 67.94 | 312.64 | 240.40 | 16.15 |
| 2020/21 | nr | 16.15 | 249.75 | 65.32 | 331.22 | 69.44 | 318.16 | 245.78 | 16.00 |
| 2021/22 | nr | 16.00 | 248.16 | 67.13 | 331.29 | 68.82 | 316.63 | 245.95 | 16.51 |
| 2022/23 | nr | 16.51 | 247.46 | 63.38 | 327.36 | 67.07 | 315.04 | 246.88 | 13.40 |
| 2023/24 | nr | 13.40 | 259.86 | 69.34 | 342.59 | 74.43 | 330.93 | 253.84 | 14.33 |
| 2024/25 | nr | 14.33 | 272.48 | 71.91 | 358.71 | 75.37 | 347.42 | 266.60 | 16.74 |
| Oil, Soybean | | | | | | | | | |
| 2011/12 | nr | 4.60 | 42.87 | 8.02 | 55.48 | 8.55 | 229.35 | 42.46 | 4.48 |
| 2012/13 | nr | 4.48 | 43.42 | 8.53 | 56.42 | 9.36 | 232.17 | 42.60 | 4.46 |
| 2013/14 | nr | 4.46 | 45.33 | 9.35 | 59.14 | 9.43 | 243.33 | 45.51 | 4.21 |
| 2014/15 | nr | 4.21 | 49.38 | 10.18 | 63.77 | 11.19 | 265.26 | 47.88 | 4.70 |
| 2015/16 | nr | 4.70 | 51.66 | 11.74 | 68.10 | 11.83 | 275.76 | 52.07 | 4.19 |
| 2016/17 | nr | 4.21 | 53.95 | 11.22 | 69.39 | 11.45 | 288.38 | 53.57 | 4.36 |
| 2017/18 | nr | 4.36 | 55.31 | 10.05 | 69.72 | 10.78 | 295.65 | 54.43 | 4.52 |
| 2018/19 | nr | 4.52 | 56.48 | 10.93 | 71.92 | 11.48 | 299.13 | 55.63 | 4.81 |
| 2019/20 | nr | 4.81 | 58.91 | 11.61 | 75.33 | 12.38 | 312.63 | 57.27 | 5.68 |
| 2020/21 | nr | 5.68 | 60.06 | 11.69 | 77.43 | 12.61 | 318.16 | 58.91 | 5.92 |
| 2021/22 | nr | 5.92 | 60.05 | 11.34 | 77.30 | 12.44 | 316.63 | 59.76 | 5.11 |
| 2022/23 | nr | 5.11 | 59.57 | 10.81 | 75.49 | 11.71 | 315.04 | 58.75 | 5.03 |
| 2023/24 | nr | 5.03 | 62.74 | 10.45 | 78.22 | 11.77 | 330.93 | 61.15 | 5.30 |
| 2024/25 | nr | 5.30 | 65.86 | 11.79 | 82.95 | 12.65 | 347.42 | 65.27 | 5.03 |

Based on the aggregate of different marketing years, primarily October through September.

Table 17: World Rapeseed and Products Supply and Distribution

Million Metric Tons

| | Area Harvested | Beginning Stocks | Production | Imports | Total Supply | Exports | Food Use Dom. | Domestic Consumpti | Ending Stocks |
|--------------------------|----------------|------------------|------------|---------|--------------|---------|---------------|--------------------|---------------|
| Oilseed, Rapeseed | | | | | | | | | |
| 2011/12 | 33.55 | 8.71 | 61.55 | 13.24 | 83.51 | 12.99 | 0.46 | 63.73 | 6.79 |
| 2012/13 | 36.07 | 6.79 | 63.67 | 12.83 | 83.29 | 12.57 | 0.48 | 65.20 | 5.52 |
| 2013/14 | 36.07 | 5.52 | 71.11 | 15.55 | 92.18 | 15.10 | 0.50 | 69.28 | 7.80 |
| 2014/15 | 35.43 | 7.80 | 70.99 | 14.32 | 93.11 | 15.11 | 0.56 | 70.63 | 7.37 |
| 2015/16 | 33.75 | 7.37 | 69.40 | 14.13 | 90.90 | 14.40 | 0.66 | 70.14 | 6.37 |
| 2016/17 | 33.80 | 6.42 | 70.17 | 15.80 | 92.38 | 16.15 | 0.66 | 70.93 | 5.31 |
| 2017/18 | 36.17 | 5.31 | 75.80 | 15.73 | 96.83 | 16.60 | 0.66 | 72.10 | 8.14 |
| 2018/19 | 36.23 | 8.14 | 73.49 | 14.64 | 96.27 | 14.70 | 0.17 | 71.88 | 9.69 |
| 2019/20 | 35.14 | 9.69 | 70.33 | 15.82 | 95.84 | 16.00 | 0.27 | 72.30 | 7.54 |
| 2020/21 | 35.34 | 7.54 | 74.75 | 16.67 | 98.96 | 18.03 | 0.37 | 74.69 | 6.23 |
| 2021/22 | 38.46 | 6.23 | 75.83 | 13.92 | 95.99 | 15.35 | 0.67 | 75.89 | 4.75 |
| 2022/23 | 41.95 | 4.75 | 88.90 | 20.05 | 113.70 | 19.55 | 0.67 | 85.19 | 8.96 |
| 2023/24 | 43.31 | 8.96 | 89.89 | 18.31 | 117.16 | 18.01 | 0.67 | 89.04 | 10.11 |
| 2024/25 | 42.66 | 10.11 | 86.18 | 16.55 | 112.84 | 16.87 | 0.75 | 88.78 | 7.19 |
| Meal, Rapeseed | | | | | | | | | |
| 2011/12 | nr | 1.05 | 35.11 | 5.57 | 41.73 | 5.56 | 0.00 | 35.05 | 1.11 |
| 2012/13 | nr | 1.11 | 36.10 | 5.63 | 42.84 | 5.70 | 0.00 | 36.24 | 0.90 |
| 2013/14 | nr | 0.90 | 38.54 | 6.51 | 45.95 | 6.36 | 0.00 | 38.69 | 0.90 |
| 2014/15 | nr | 0.90 | 38.99 | 6.01 | 45.90 | 6.07 | 0.00 | 38.86 | 0.97 |
| 2015/16 | nr | 0.97 | 38.84 | 5.71 | 45.52 | 5.70 | 0.00 | 38.67 | 1.15 |
| 2016/17 | nr | 1.33 | 39.10 | 6.19 | 46.61 | 6.26 | 0.00 | 38.96 | 1.40 |
| 2017/18 | nr | 1.40 | 39.66 | 6.51 | 47.57 | 6.68 | 0.00 | 39.43 | 1.46 |
| 2018/19 | nr | 1.46 | 39.57 | 7.17 | 48.20 | 7.22 | 0.00 | 39.74 | 1.25 |
| 2019/20 | nr | 1.25 | 39.83 | 8.01 | 49.09 | 7.72 | 0.00 | 39.97 | 1.40 |
| 2020/21 | nr | 1.40 | 41.59 | 8.37 | 51.36 | 8.23 | 0.00 | 41.85 | 1.28 |
| 2021/22 | nr | 1.28 | 41.93 | 7.67 | 50.88 | 7.76 | 0.00 | 41.63 | 1.49 |
| 2022/23 | nr | 1.49 | 47.22 | 9.29 | 58.00 | 9.78 | 0.00 | 46.97 | 1.25 |
| 2023/24 | nr | 1.25 | 49.33 | 9.91 | 60.49 | 10.15 | 0.00 | 48.97 | 1.37 |
| 2024/25 | nr | 1.37 | 49.10 | 10.45 | 60.93 | 10.52 | 0.00 | 49.04 | 1.38 |
| Oil, Rapeseed | | | | | | | | | |
| 2011/12 | nr | 2.28 | 24.87 | 4.08 | 31.23 | 3.98 | 16.55 | 23.92 | 3.34 |
| 2012/13 | nr | 3.34 | 25.50 | 3.94 | 32.78 | 3.95 | 16.61 | 23.87 | 4.95 |
| 2013/14 | nr | 4.95 | 27.20 | 3.82 | 35.97 | 3.83 | 17.95 | 25.86 | 6.28 |
| 2014/15 | nr | 6.28 | 27.62 | 3.95 | 37.85 | 4.07 | 18.94 | 27.11 | 6.68 |
| 2015/16 | nr | 6.68 | 27.56 | 4.13 | 38.37 | 4.17 | 20.13 | 28.49 | 5.71 |
| 2016/17 | nr | 5.66 | 27.81 | 4.56 | 38.02 | 4.64 | 20.56 | 29.14 | 4.25 |
| 2017/18 | nr | 4.25 | 28.32 | 4.84 | 37.41 | 4.83 | 20.58 | 29.18 | 3.40 |
| 2018/19 | nr | 3.40 | 28.03 | 5.18 | 36.61 | 5.26 | 20.30 | 28.38 | 2.96 |
| 2019/20 | nr | 2.96 | 28.36 | 5.80 | 37.12 | 5.87 | 20.23 | 28.34 | 2.91 |
| 2020/21 | nr | 2.91 | 29.44 | 6.33 | 38.68 | 6.42 | 20.46 | 28.60 | 3.66 |
| 2021/22 | nr | 3.66 | 29.17 | 5.13 | 37.96 | 5.21 | 22.02 | 30.16 | 2.59 |
| 2022/23 | nr | 2.59 | 32.86 | 6.89 | 42.34 | 6.55 | 23.48 | 32.68 | 3.11 |
| 2023/24 | nr | 3.11 | 34.47 | 7.54 | 45.12 | 7.42 | 24.46 | 34.53 | 3.17 |
| 2024/25 | nr | 3.17 | 34.29 | 7.72 | 45.18 | 7.78 | 24.46 | 34.72 | 2.68 |

Based on the aggregate of different marketing years.

Table 18: World Sunflower and Products Supply and Distribution

Million Metric Tons

| | Area Harvested | Beginning Stocks | Production | Imports | Exports | Food Use Dom. | Domestic Consumpti | Ending Stocks |
|-------------------------------|----------------|------------------|------------|---------|---------|---------------|--------------------|---------------|
| Oilseed, Sunflowerseed | | | | | | | | |
| 2011/12 | 24.65 | 2.26 | 38.74 | 1.74 | 1.93 | 1.77 | 38.28 | 2.54 |
| 2012/13 | 23.58 | 2.54 | 34.93 | 1.36 | 1.47 | 1.76 | 34.59 | 2.77 |
| 2013/14 | 24.01 | 2.77 | 41.57 | 1.73 | 2.01 | 1.91 | 40.76 | 3.31 |
| 2014/15 | 23.09 | 3.31 | 39.25 | 1.63 | 1.68 | 2.01 | 39.55 | 2.95 |
| 2015/16 | 23.47 | 2.95 | 40.70 | 2.11 | 2.13 | 2.05 | 40.70 | 2.93 |
| 2016/17 | 25.95 | 2.93 | 48.35 | 2.46 | 2.68 | 2.06 | 47.39 | 3.66 |
| 2017/18 | 25.93 | 3.66 | 47.92 | 2.38 | 2.75 | 2.09 | 48.11 | 3.10 |
| 2018/19 | 25.66 | 3.10 | 50.33 | 2.89 | 3.19 | 2.07 | 50.34 | 2.79 |
| 2019/20 | 25.83 | 2.79 | 53.91 | 3.35 | 3.60 | 2.09 | 53.45 | 3.00 |
| 2020/21 | 26.77 | 3.00 | 48.87 | 2.72 | 2.95 | 2.08 | 49.23 | 2.41 |
| 2021/22 | 28.54 | 2.41 | 56.86 | 3.83 | 3.95 | 2.08 | 51.31 | 7.85 |
| 2022/23 | 28.30 | 7.85 | 52.78 | 3.77 | 4.02 | 2.12 | 56.24 | 4.15 |
| 2023/24 | 27.94 | 4.15 | 56.03 | 2.57 | 2.87 | 2.10 | 56.68 | 3.20 |
| 2024/25 | 27.79 | 3.20 | 50.51 | 2.17 | 2.30 | 1.92 | 51.31 | 2.27 |
| Meal, Sunflowerseed | | | | | | | | |
| 2011/12 | nr | 1.08 | 15.62 | 6.44 | 6.81 | 0.00 | 14.67 | 1.67 |
| 2012/13 | nr | 1.67 | 14.14 | 4.96 | 5.14 | 0.00 | 14.88 | 0.75 |
| 2013/14 | nr | 0.75 | 16.84 | 5.81 | 6.23 | 0.00 | 15.78 | 1.39 |
| 2014/15 | nr | 1.39 | 16.17 | 5.56 | 5.87 | 0.00 | 15.73 | 1.52 |
| 2015/16 | nr | 1.52 | 16.54 | 5.99 | 6.24 | 0.00 | 16.39 | 1.42 |
| 2016/17 | nr | 1.42 | 19.50 | 7.12 | 7.61 | 0.00 | 18.96 | 1.47 |
| 2017/18 | nr | 1.47 | 20.00 | 6.81 | 7.16 | 0.00 | 19.34 | 1.78 |
| 2018/19 | nr | 1.78 | 20.98 | 8.11 | 8.18 | 0.00 | 20.69 | 2.00 |
| 2019/20 | nr | 2.00 | 21.83 | 8.56 | 8.85 | 0.00 | 21.44 | 2.11 |
| 2020/21 | nr | 2.11 | 20.28 | 7.58 | 8.16 | 0.00 | 20.49 | 1.32 |
| 2021/22 | nr | 1.32 | 21.23 | 7.35 | 7.84 | 0.00 | 20.98 | 1.08 |
| 2022/23 | nr | 1.08 | 23.07 | 8.54 | 9.16 | 0.00 | 21.81 | 1.72 |
| 2023/24 | nr | 1.72 | 23.28 | 9.98 | 10.20 | 0.00 | 22.67 | 2.11 |
| 2024/25 | nr | 2.11 | 21.01 | 8.43 | 8.97 | 0.00 | 21.00 | 1.57 |
| Oil, Sunflowerseed | | | | | | | | |
| 2011/12 | nr | 1.94 | 14.37 | 5.89 | 6.52 | 11.89 | 12.62 | 3.05 |
| 2012/13 | nr | 3.05 | 12.85 | 5.09 | 5.55 | 12.40 | 13.20 | 2.24 |
| 2013/14 | nr | 2.24 | 15.65 | 7.05 | 7.78 | 13.41 | 14.22 | 2.94 |
| 2014/15 | nr | 2.94 | 14.97 | 6.33 | 7.41 | 13.43 | 14.24 | 2.59 |
| 2015/16 | nr | 2.59 | 15.40 | 7.32 | 8.21 | 14.16 | 15.07 | 2.04 |
| 2016/17 | nr | 2.12 | 18.30 | 9.31 | 10.75 | 15.41 | 16.37 | 2.62 |
| 2017/18 | nr | 2.62 | 18.57 | 9.15 | 10.32 | 16.42 | 17.40 | 2.61 |
| 2018/19 | nr | 2.61 | 19.62 | 9.73 | 11.51 | 16.99 | 18.00 | 2.44 |
| 2019/20 | nr | 2.44 | 21.21 | 11.75 | 13.49 | 17.89 | 18.90 | 3.01 |
| 2020/21 | nr | 3.01 | 19.01 | 9.67 | 11.34 | 17.28 | 18.31 | 2.04 |
| 2021/22 | nr | 2.04 | 19.69 | 9.68 | 11.22 | 16.46 | 17.56 | 2.65 |
| 2022/23 | nr | 2.65 | 21.72 | 12.56 | 14.28 | 18.38 | 19.55 | 3.11 |
| 2023/24 | nr | 3.11 | 22.13 | 13.75 | 15.04 | 19.83 | 21.00 | 2.95 |
| 2024/25 | nr | 2.95 | 19.96 | 10.75 | 12.33 | 17.98 | 19.11 | 2.22 |

Based on the aggregate of different marketing years, primarily September through August.

Table 19: World Palm Oil, Coconut Oil, and Fish Meal Supply and Distribution

Million Metric Tons

| | Beginning Stocks | Production | Imports | Total Supply | Exports | Industrial Dom. | Food Use Dom. | Domestic Consumpti | Ending Stocks |
|---------------------|------------------|------------|---------|--------------|---------|-----------------|---------------|--------------------|---------------|
| Oil, Palm | | | | | | | | | |
| 2011/12 | 8.49 | 52.31 | 37.84 | 98.65 | 39.73 | 12.46 | 36.24 | 49.35 | 9.57 |
| 2012/13 | 9.57 | 56.34 | 41.39 | 107.30 | 43.00 | 14.67 | 39.51 | 54.82 | 9.48 |
| 2013/14 | 9.48 | 59.20 | 41.16 | 109.84 | 43.09 | 16.21 | 40.27 | 57.12 | 9.63 |
| 2014/15 | 9.63 | 62.09 | 43.86 | 115.57 | 47.33 | 14.35 | 42.42 | 57.41 | 10.84 |
| 2015/16 | 10.84 | 58.75 | 41.79 | 111.37 | 43.79 | 16.41 | 41.85 | 58.95 | 8.63 |
| 2016/17 | 8.58 | 65.57 | 45.63 | 119.78 | 48.94 | 16.72 | 43.05 | 60.44 | 10.40 |
| 2017/18 | 10.40 | 70.51 | 46.02 | 126.94 | 48.66 | 19.85 | 44.75 | 65.29 | 12.99 |
| 2018/19 | 12.99 | 74.17 | 49.89 | 137.04 | 51.49 | 22.72 | 47.15 | 70.56 | 14.99 |
| 2019/20 | 14.99 | 73.14 | 47.04 | 135.16 | 48.36 | 23.10 | 46.97 | 70.78 | 16.02 |
| 2020/21 | 16.02 | 73.37 | 46.86 | 136.25 | 48.56 | 23.51 | 48.26 | 72.47 | 15.23 |
| 2021/22 | 15.23 | 73.17 | 41.60 | 129.99 | 43.90 | 22.88 | 45.88 | 69.42 | 16.67 |
| 2022/23 | 16.67 | 76.63 | 47.12 | 140.42 | 49.52 | 25.39 | 48.23 | 74.27 | 16.63 |
| 2023/24 | 16.63 | 76.26 | 42.93 | 135.82 | 44.80 | 26.12 | 48.38 | 75.10 | 15.92 |
| 2024/25 | 15.92 | 79.63 | 44.58 | 140.13 | 46.58 | 27.16 | 50.61 | 78.32 | 15.23 |
| Oil, Coconut | | | | | | | | | |
| 2011/12 | 0.75 | 3.27 | 1.83 | 5.85 | 1.86 | 1.48 | 1.86 | 3.37 | 0.62 |
| 2012/13 | 0.62 | 3.48 | 1.89 | 5.99 | 1.93 | 1.62 | 1.90 | 3.56 | 0.50 |
| 2013/14 | 0.50 | 3.37 | 1.74 | 5.61 | 1.91 | 1.51 | 1.72 | 3.27 | 0.43 |
| 2014/15 | 0.43 | 3.31 | 1.82 | 5.56 | 1.94 | 1.44 | 1.70 | 3.18 | 0.44 |
| 2015/16 | 0.44 | 3.20 | 1.61 | 5.25 | 1.58 | 1.47 | 1.60 | 3.10 | 0.58 |
| 2016/17 | 0.57 | 3.38 | 1.54 | 5.49 | 1.79 | 1.55 | 1.63 | 3.21 | 0.50 |
| 2017/18 | 0.50 | 3.69 | 1.75 | 5.94 | 1.76 | 1.65 | 1.74 | 3.42 | 0.76 |
| 2018/19 | 0.76 | 3.79 | 1.86 | 6.40 | 2.14 | 1.70 | 1.80 | 3.54 | 0.73 |
| 2019/20 | 0.73 | 3.61 | 1.84 | 6.18 | 1.88 | 1.75 | 1.87 | 3.65 | 0.64 |
| 2020/21 | 0.64 | 3.58 | 1.95 | 6.17 | 1.73 | 1.70 | 1.92 | 3.65 | 0.79 |
| 2021/22 | 0.79 | 3.73 | 2.24 | 6.76 | 2.24 | 1.63 | 1.93 | 3.60 | 0.91 |
| 2022/23 | 0.91 | 3.72 | 1.94 | 6.58 | 2.18 | 1.63 | 1.88 | 3.55 | 0.85 |
| 2023/24 | 0.85 | 3.77 | 1.97 | 6.59 | 2.00 | 1.77 | 1.93 | 3.73 | 0.87 |
| 2024/25 | 0.87 | 3.65 | 1.91 | 6.42 | 1.99 | 1.75 | 1.92 | 3.70 | 0.74 |
| Meal, Fish | | | | | | | | | |
| 2011/12 | 0.69 | 4.71 | 3.05 | 8.44 | 2.80 | 0.05 | 0.00 | 5.36 | 0.28 |
| 2012/13 | 0.28 | 4.84 | 2.47 | 7.59 | 2.32 | 0.05 | 0.00 | 4.81 | 0.46 |
| 2013/14 | 0.46 | 4.45 | 2.73 | 7.64 | 2.47 | 0.05 | 0.00 | 4.94 | 0.23 |
| 2014/15 | 0.23 | 4.69 | 2.51 | 7.42 | 2.28 | 0.05 | 0.00 | 4.87 | 0.27 |
| 2015/16 | 0.27 | 4.51 | 2.44 | 7.21 | 2.21 | 0.05 | 0.00 | 4.73 | 0.27 |
| 2016/17 | 0.27 | 4.88 | 3.06 | 8.21 | 2.59 | 0.05 | 0.00 | 5.37 | 0.25 |
| 2017/18 | 0.25 | 4.80 | 3.05 | 8.10 | 2.69 | 0.05 | 0.00 | 5.17 | 0.25 |
| 2018/19 | 0.25 | 4.77 | 3.08 | 8.10 | 2.65 | 0.05 | 0.00 | 5.20 | 0.24 |
| 2019/20 | 0.24 | 4.65 | 3.09 | 7.98 | 2.67 | 0.08 | 0.00 | 5.05 | 0.26 |
| 2020/21 | 0.26 | 4.86 | 3.41 | 8.52 | 2.95 | 0.06 | 0.00 | 5.38 | 0.19 |
| 2021/22 | 0.19 | 4.97 | 3.59 | 8.75 | 2.84 | 0.07 | 0.00 | 5.64 | 0.27 |
| 2022/23 | 0.27 | 4.51 | 3.33 | 8.10 | 2.50 | 0.07 | 0.00 | 5.37 | 0.23 |
| 2023/24 | 0.23 | 5.13 | 3.65 | 9.01 | 3.07 | 0.08 | 0.00 | 5.72 | 0.23 |
| 2024/25 | 0.23 | 5.15 | 3.61 | 8.99 | 3.07 | 0.08 | 0.00 | 5.68 | 0.24 |

Based on the aggregate of different marketing years.

Table 20: United States Oilseeds and Products Supply and Distribution Local Marketing Year

Thousand Metric Tons

| | Area Harvested | Beginning Stocks | Production | Imports | Total Supply | Exports | Crush | Domestic Consumpti | Ending Stocks |
|-----------------------------|----------------|------------------|------------|---------|--------------|---------|--------|--------------------|---------------|
| Major Oilseeds | | | | | | | | | |
| 2011/12 | 35,131 | 7,319 | 92,442 | 1,285 | 101,046 | 37,813 | 50,316 | 57,621 | 5,612 |
| 2012/13 | 36,676 | 5,612 | 93,323 | 1,605 | 100,540 | 37,156 | 50,250 | 57,621 | 5,763 |
| 2013/14 | 35,428 | 5,763 | 98,986 | 3,067 | 107,816 | 45,569 | 51,455 | 58,294 | 3,953 |
| 2014/15 | 38,991 | 3,953 | 116,050 | 1,851 | 121,854 | 51,109 | 55,108 | 63,989 | 6,756 |
| 2015/16 | 38,403 | 6,756 | 115,891 | 1,130 | 123,777 | 53,968 | 55,055 | 62,940 | 6,869 |
| 2016/17 | 39,247 | 6,869 | 126,942 | 1,502 | 135,313 | 60,084 | 56,257 | 65,628 | 9,601 |
| 2017/18 | 42,801 | 9,601 | 131,483 | 1,419 | 142,503 | 59,315 | 60,168 | 69,361 | 13,827 |
| 2018/19 | 41,317 | 13,827 | 130,709 | 1,116 | 145,652 | 48,861 | 61,034 | 69,815 | 26,976 |
| 2019/20 | 36,811 | 26,976 | 106,951 | 1,216 | 135,143 | 47,067 | 63,037 | 71,737 | 16,339 |
| 2020/21 | 38,809 | 16,339 | 124,544 | 1,205 | 142,088 | 62,781 | 62,655 | 70,668 | 8,639 |
| 2021/22 | 41,048 | 8,639 | 131,322 | 1,182 | 141,143 | 59,552 | 63,869 | 72,449 | 9,142 |
| 2022/23 | 39,909 | 9,142 | 125,753 | 1,524 | 136,419 | 54,784 | 64,161 | 72,785 | 8,850 |
| 2023/24 | 37,984 | 8,850 | 122,164 | 1,110 | 132,124 | 47,347 | 66,320 | 73,973 | 10,804 |
| 2024/25 | 40,502 | 10,804 | 131,161 | 992 | 142,957 | 50,819 | 69,831 | 77,908 | 14,230 |
| Major Protein Meals | | | | | | | | | |
| 2011/12 | nr | 378 | 39,450 | 3,032 | 42,860 | 9,170 | 50,316 | 33,354 | 336 |
| 2012/13 | nr | 336 | 38,593 | 3,393 | 42,322 | 10,460 | 50,250 | 31,548 | 314 |
| 2013/14 | nr | 314 | 39,291 | 3,798 | 43,403 | 10,803 | 51,455 | 32,308 | 292 |
| 2014/15 | nr | 292 | 43,210 | 3,873 | 47,375 | 12,144 | 55,108 | 34,941 | 290 |
| 2015/16 | nr | 290 | 42,773 | 4,070 | 47,133 | 11,178 | 55,055 | 35,680 | 275 |
| 2016/17 | nr | 275 | 43,117 | 3,920 | 47,312 | 10,826 | 56,257 | 36,078 | 408 |
| 2017/18 | nr | 408 | 47,063 | 3,736 | 51,207 | 13,005 | 60,168 | 37,639 | 563 |
| 2018/19 | nr | 563 | 46,532 | 3,935 | 51,030 | 12,447 | 61,034 | 38,161 | 422 |
| 2019/20 | nr | 422 | 48,770 | 4,121 | 53,313 | 12,826 | 63,037 | 40,101 | 386 |
| 2020/21 | nr | 386 | 48,224 | 4,385 | 52,995 | 12,623 | 62,655 | 39,981 | 391 |
| 2021/22 | nr | 391 | 49,229 | 3,570 | 53,190 | 12,479 | 63,869 | 40,358 | 353 |
| 2022/23 | nr | 353 | 49,939 | 4,308 | 54,600 | 13,392 | 64,161 | 40,794 | 414 |
| 2023/24 | nr | 414 | 51,485 | 4,282 | 56,181 | 14,811 | 66,320 | 40,883 | 487 |
| 2024/25 | nr | 487 | 53,932 | 4,352 | 58,771 | 15,987 | 69,831 | 42,289 | 495 |
| Major Vegetable Oils | | | | | | | | | |
| 2011/12 | 0 | 1,723 | 10,032 | 3,831 | 15,586 | 1,146 | 50,316 | 12,873 | 1,567 |
| 2012/13 | 0 | 1,567 | 10,231 | 3,801 | 15,599 | 1,387 | 50,250 | 13,068 | 1,144 |
| 2013/14 | 0 | 1,144 | 10,425 | 4,016 | 15,585 | 1,116 | 51,455 | 13,498 | 971 |
| 2014/15 | 0 | 971 | 10,938 | 4,230 | 16,139 | 1,174 | 55,108 | 13,679 | 1,286 |
| 2015/16 | 0 | 1,286 | 11,210 | 4,527 | 17,023 | 1,248 | 55,055 | 14,541 | 1,234 |
| 2016/17 | 0 | 1,234 | 11,433 | 4,731 | 17,398 | 1,416 | 56,257 | 14,712 | 1,270 |
| 2017/18 | 0 | 1,270 | 12,107 | 4,783 | 18,160 | 1,342 | 60,168 | 15,531 | 1,287 |
| 2018/19 | 0 | 1,287 | 12,188 | 4,702 | 18,177 | 1,092 | 61,034 | 15,892 | 1,193 |
| 2019/20 | 0 | 1,193 | 12,632 | 4,901 | 18,726 | 1,504 | 63,037 | 16,014 | 1,208 |
| 2020/21 | 0 | 1,208 | 12,692 | 4,950 | 18,850 | 1,042 | 62,655 | 16,509 | 1,299 |
| 2021/22 | 0 | 1,299 | 13,053 | 5,263 | 19,615 | 1,048 | 63,869 | 17,271 | 1,296 |
| 2022/23 | 0 | 1,296 | 13,179 | 6,266 | 20,741 | 335 | 64,161 | 19,272 | 1,134 |
| 2023/24 | 0 | 1,134 | 13,628 | 6,864 | 21,626 | 419 | 66,320 | 20,192 | 1,015 |
| 2024/25 | 0 | 1,015 | 14,333 | 7,220 | 22,568 | 656 | 69,831 | 20,854 | 1,058 |

Based on the aggregate of different marketing years

Table 21: United States Soybeans and Products Supply and Distribution (Sep-Aug)

Thousand Metric Tons

| | Area Harvested | Beginning Stocks | Production | Imports | Total Supply | Exports | Crush | Domestic Consumpti | Ending Stocks |
|-------------------------|----------------|------------------|------------|---------|--------------|---------|--------|--------------------|---------------|
| Oilseed, Soybean | | | | | | | | | |
| 2011/12 | 29,856 | 5,852 | 84,291 | 439 | 90,582 | 37,186 | 46,348 | 48,786 | 4,610 |
| 2012/13 | 30,814 | 4,610 | 82,791 | 1,103 | 88,504 | 36,129 | 45,967 | 48,550 | 3,825 |
| 2013/14 | 30,850 | 3,825 | 91,363 | 1,953 | 97,141 | 44,594 | 47,192 | 50,043 | 2,504 |
| 2014/15 | 33,431 | 2,504 | 106,905 | 904 | 110,313 | 50,136 | 50,975 | 54,989 | 5,188 |
| 2015/16 | 33,080 | 5,188 | 106,869 | 641 | 112,698 | 52,869 | 51,335 | 54,475 | 5,354 |
| 2016/17 | 33,470 | 5,354 | 116,931 | 606 | 122,891 | 58,964 | 51,742 | 55,719 | 8,208 |
| 2017/18 | 36,236 | 8,208 | 120,065 | 594 | 128,867 | 58,071 | 55,926 | 58,873 | 11,923 |
| 2018/19 | 35,448 | 11,923 | 120,515 | 383 | 132,821 | 47,721 | 56,935 | 59,924 | 25,176 |
| 2019/20 | 30,318 | 25,176 | 96,644 | 419 | 122,239 | 45,800 | 58,910 | 61,782 | 14,657 |
| 2020/21 | 33,428 | 14,657 | 114,749 | 539 | 129,945 | 61,664 | 58,257 | 61,287 | 6,994 |
| 2021/22 | 34,921 | 6,994 | 121,504 | 433 | 128,931 | 58,570 | 59,980 | 62,893 | 7,468 |
| 2022/23 | 34,873 | 7,468 | 116,221 | 667 | 124,356 | 53,874 | 60,199 | 63,292 | 7,190 |
| 2023/24 | 33,294 | 7,190 | 113,273 | 567 | 121,030 | 46,128 | 62,244 | 65,594 | 9,308 |
| 2024/25 | 34,913 | 9,308 | 121,417 | 408 | 131,133 | 49,668 | 65,589 | 68,668 | 12,797 |
| Meal, Soybean | | | | | | | | | |
| 2011/12 | nr | 318 | 37,217 | 196 | 37,731 | 8,845 | 46,348 | 28,614 | 272 |
| 2012/13 | nr | 272 | 36,174 | 222 | 36,668 | 10,111 | 45,967 | 26,308 | 249 |
| 2013/14 | nr | 249 | 36,909 | 347 | 37,505 | 10,504 | 47,192 | 26,774 | 227 |
| 2014/15 | nr | 227 | 40,880 | 302 | 41,409 | 11,891 | 50,975 | 29,282 | 236 |
| 2015/16 | nr | 236 | 40,525 | 358 | 41,119 | 10,843 | 51,335 | 30,037 | 239 |
| 2016/17 | nr | 239 | 40,630 | 313 | 41,182 | 10,505 | 51,742 | 30,314 | 363 |
| 2017/18 | nr | 363 | 44,657 | 438 | 45,458 | 12,717 | 55,926 | 32,237 | 504 |
| 2018/19 | nr | 504 | 44,283 | 620 | 45,407 | 12,141 | 56,935 | 32,901 | 365 |
| 2019/20 | nr | 365 | 46,358 | 580 | 47,303 | 12,549 | 58,910 | 34,444 | 310 |
| 2020/21 | nr | 310 | 45,872 | 712 | 46,894 | 12,406 | 58,257 | 34,179 | 309 |
| 2021/22 | nr | 309 | 47,005 | 594 | 47,908 | 12,303 | 59,980 | 35,323 | 282 |
| 2022/23 | nr | 282 | 47,621 | 575 | 48,478 | 13,196 | 60,199 | 34,946 | 336 |
| 2023/24 | nr | 336 | 49,120 | 623 | 50,079 | 14,612 | 62,244 | 35,056 | 411 |
| 2024/25 | nr | 411 | 51,480 | 612 | 52,503 | 15,785 | 65,589 | 36,310 | 408 |
| Oil, Soybean | | | | | | | | | |
| 2011/12 | nr | 1,213 | 8,954 | 68 | 10,235 | 664 | 46,348 | 8,396 | 1,175 |
| 2012/13 | nr | 1,175 | 8,990 | 89 | 10,254 | 981 | 45,967 | 8,522 | 751 |
| 2013/14 | nr | 751 | 9,131 | 75 | 9,957 | 852 | 47,192 | 8,577 | 528 |
| 2014/15 | nr | 528 | 9,706 | 120 | 10,354 | 914 | 50,975 | 8,599 | 841 |
| 2015/16 | nr | 841 | 9,956 | 130 | 10,927 | 1,017 | 51,335 | 9,145 | 765 |
| 2016/17 | nr | 765 | 10,035 | 145 | 10,945 | 1,159 | 51,742 | 9,010 | 776 |
| 2017/18 | nr | 776 | 10,783 | 152 | 11,711 | 1,108 | 55,926 | 9,698 | 905 |
| 2018/19 | nr | 905 | 10,976 | 180 | 12,061 | 880 | 56,935 | 10,376 | 805 |
| 2019/20 | nr | 805 | 11,299 | 145 | 12,249 | 1,287 | 58,910 | 10,122 | 840 |
| 2020/21 | nr | 840 | 11,350 | 137 | 12,327 | 786 | 58,257 | 10,574 | 967 |
| 2021/22 | nr | 967 | 11,864 | 137 | 12,968 | 803 | 59,980 | 11,262 | 903 |
| 2022/23 | nr | 903 | 11,897 | 170 | 12,970 | 171 | 60,199 | 12,070 | 729 |
| 2023/24 | nr | 729 | 12,306 | 282 | 13,317 | 280 | 62,244 | 12,356 | 681 |
| 2024/25 | nr | 681 | 12,975 | 227 | 13,883 | 499 | 65,589 | 12,701 | 683 |

Data based on Local Marketing Year (MY). Soybeans are on a September/August MY, and Soybean Meal and Oil are on an October/September MY.

Table 22: Brazil Soybeans and Products Supply and Distribution Local Marketing Years (Jan-Dec)

Thousand Metric Tons

| | Area Harvested | Beginning Stocks | Production | Imports | Total Supply | Exports | Crush | Domestic Consumpti | Ending Stocks |
|---------------------------------|----------------|------------------|------------|---------|--------------|---------|--------|--------------------|---------------|
| Oilseed, Soybean (Local) | | | | | | | | | |
| 2011/12 | 25,000 | 13,044 | 66,500 | 268 | 79,812 | 32,906 | 36,434 | 38,834 | 8,072 |
| 2012/13 | 27,700 | 8,072 | 82,000 | 282 | 90,354 | 42,796 | 36,237 | 38,612 | 8,946 |
| 2013/14 | 30,100 | 8,946 | 86,200 | 579 | 95,725 | 45,692 | 37,622 | 40,172 | 9,861 |
| 2014/15 | 32,100 | 9,861 | 97,100 | 324 | 107,285 | 54,324 | 40,556 | 43,206 | 9,755 |
| 2015/16 | 33,300 | 9,755 | 95,700 | 382 | 105,837 | 51,582 | 39,531 | 42,206 | 12,049 |
| 2016/17 | 33,900 | 12,049 | 114,900 | 254 | 127,203 | 68,155 | 41,837 | 44,737 | 14,311 |
| 2017/18 | 35,150 | 14,311 | 123,400 | 187 | 137,898 | 83,258 | 43,556 | 46,756 | 7,884 |
| 2018/19 | 35,900 | 7,884 | 120,500 | 144 | 128,528 | 74,073 | 43,454 | 46,369 | 8,086 |
| 2019/20 | 37,200 | 8,086 | 128,500 | 822 | 137,408 | 82,973 | 46,845 | 49,995 | 4,440 |
| 2020/21 | 39,800 | 4,440 | 139,500 | 864 | 144,804 | 86,110 | 47,781 | 51,081 | 7,613 |
| 2021/22 | 41,800 | 7,613 | 130,500 | 419 | 138,532 | 78,730 | 50,932 | 54,177 | 5,625 |
| 2022/23 | 44,600 | 5,625 | 162,000 | 181 | 167,806 | 101,870 | 54,165 | 57,965 | 7,971 |
| 2023/24 | 46,100 | 7,971 | 153,000 | 925 | 161,896 | 98,000 | 54,500 | 58,250 | 5,646 |
| 2024/25 | 47,300 | 5,646 | 169,000 | 150 | 174,796 | 109,000 | 54,500 | 58,500 | 7,296 |
| Meal, Soybean (Local) | | | | | | | | | |
| 2011/12 | nr | 2,711 | 28,054 | 19 | 30,784 | 14,289 | 36,434 | 13,900 | 2,595 |
| 2012/13 | nr | 2,595 | 27,902 | 33 | 30,530 | 13,334 | 36,237 | 14,500 | 2,696 |
| 2013/14 | nr | 2,696 | 28,969 | 26 | 31,691 | 13,716 | 37,622 | 15,300 | 2,675 |
| 2014/15 | nr | 2,675 | 31,228 | 17 | 33,920 | 14,827 | 40,556 | 15,700 | 3,393 |
| 2015/16 | nr | 3,393 | 30,439 | 27 | 33,859 | 14,445 | 39,531 | 16,450 | 2,964 |
| 2016/17 | nr | 2,964 | 32,214 | 36 | 35,214 | 14,179 | 41,837 | 17,000 | 4,035 |
| 2017/18 | nr | 4,035 | 33,538 | 13 | 37,586 | 16,673 | 43,556 | 17,311 | 3,602 |
| 2018/19 | nr | 3,602 | 33,460 | 23 | 37,085 | 16,682 | 43,454 | 17,645 | 2,758 |
| 2019/20 | nr | 2,758 | 36,071 | 12 | 38,841 | 16,938 | 46,845 | 18,200 | 3,703 |
| 2020/21 | nr | 3,703 | 36,791 | 18 | 40,512 | 17,149 | 47,781 | 19,000 | 4,363 |
| 2021/22 | nr | 4,363 | 39,218 | 6 | 43,587 | 20,353 | 50,932 | 19,700 | 3,534 |
| 2022/23 | nr | 3,534 | 41,707 | 8 | 45,249 | 22,474 | 54,165 | 20,300 | 2,475 |
| 2023/24 | nr | 2,475 | 41,965 | 20 | 44,460 | 22,300 | 54,500 | 20,000 | 2,160 |
| 2024/25 | nr | 2,160 | 41,965 | 10 | 44,135 | 20,500 | 54,500 | 21,000 | 2,635 |
| Oil, Soybean (Local) | | | | | | | | | |
| 2011/12 | nr | 433 | 6,922 | 1 | 7,356 | 1,756 | 36,434 | 5,300 | 300 |
| 2012/13 | nr | 300 | 6,885 | 5 | 7,190 | 1,362 | 36,237 | 5,530 | 298 |
| 2013/14 | nr | 298 | 7,148 | 0 | 7,446 | 1,305 | 37,622 | 5,750 | 391 |
| 2014/15 | nr | 391 | 7,706 | 25 | 8,122 | 1,670 | 40,556 | 6,200 | 252 |
| 2015/16 | nr | 252 | 7,511 | 66 | 7,829 | 1,254 | 39,531 | 6,300 | 275 |
| 2016/17 | nr | 275 | 7,949 | 58 | 8,282 | 1,343 | 41,837 | 6,700 | 239 |
| 2017/18 | nr | 239 | 8,493 | 35 | 8,767 | 1,415 | 43,556 | 7,100 | 252 |
| 2018/19 | nr | 252 | 8,474 | 48 | 8,774 | 1,041 | 43,454 | 7,500 | 233 |
| 2019/20 | nr | 233 | 9,135 | 199 | 9,567 | 1,110 | 46,845 | 7,850 | 607 |
| 2020/21 | nr | 607 | 9,556 | 107 | 10,270 | 1,651 | 47,781 | 8,150 | 469 |
| 2021/22 | nr | 469 | 10,186 | 24 | 10,679 | 2,597 | 50,932 | 7,725 | 357 |
| 2022/23 | nr | 357 | 10,833 | 21 | 11,211 | 2,333 | 54,165 | 8,375 | 503 |
| 2023/24 | nr | 503 | 10,900 | 80 | 11,483 | 1,500 | 54,500 | 9,450 | 533 |
| 2024/25 | nr | 533 | 10,900 | 25 | 11,458 | 1,550 | 54,500 | 9,525 | 383 |

Data based on Brazil's local January/December Marketing Year (MY). Where January 2012 - December 2012 is the 2011/12 MY.

Table 23: Argentina Soybeans and Products Supply and Distribution Local Marketing Years (Apr-Mar)

Thousand Metric Tons

| | Area Harvested | Beginning Stocks | Production | Imports | Total Supply | Exports | Crush | Domestic Consumpti | Ending Stocks |
|---------------------------------|----------------|------------------|------------|---------|--------------|---------|--------|--------------------|---------------|
| Oilseed, Soybean (Local) | | | | | | | | | |
| 2011/12 | 17,577 | 2,106 | 40,100 | 2 | 42,208 | 6,098 | 30,681 | 33,431 | 2,679 |
| 2012/13 | 19,750 | 2,679 | 49,300 | 2 | 51,981 | 7,817 | 35,009 | 40,009 | 4,155 |
| 2013/14 | 19,250 | 4,155 | 53,400 | 2 | 57,557 | 7,434 | 38,503 | 43,503 | 6,620 |
| 2014/15 | 19,350 | 6,620 | 61,450 | 141 | 68,211 | 11,670 | 45,110 | 50,360 | 6,181 |
| 2015/16 | 19,350 | 6,181 | 58,800 | 1,304 | 66,285 | 9,046 | 43,042 | 49,242 | 7,997 |
| 2016/17 | 17,335 | 7,997 | 55,000 | 2,600 | 65,597 | 7,247 | 40,940 | 47,440 | 10,910 |
| 2017/18 | 16,300 | 10,910 | 37,800 | 7,256 | 55,966 | 3,842 | 36,359 | 43,055 | 9,069 |
| 2018/19 | 16,600 | 9,069 | 55,300 | 3,789 | 68,158 | 10,256 | 41,188 | 48,088 | 9,814 |
| 2019/20 | 16,700 | 9,814 | 48,800 | 4,939 | 63,553 | 6,662 | 37,870 | 45,120 | 11,771 |
| 2020/21 | 16,470 | 11,771 | 46,200 | 4,438 | 62,409 | 5,377 | 41,043 | 48,393 | 8,639 |
| 2021/22 | 15,900 | 8,639 | 43,900 | 4,571 | 57,110 | 5,552 | 35,900 | 43,100 | 8,458 |
| 2022/23 | 15,000 | 8,458 | 25,000 | 10,395 | 43,853 | 1,891 | 28,997 | 35,247 | 6,715 |
| 2023/24 | 16,300 | 6,715 | 48,210 | 6,300 | 61,225 | 4,700 | 41,000 | 48,250 | 8,275 |
| 2024/25 | 17,300 | 8,275 | 52,000 | 6,000 | 66,275 | 5,000 | 41,500 | 49,100 | 12,175 |
| Meal, Soybean (Local) | | | | | | | | | |
| 2011/12 | nr | 2,875 | 23,946 | 0 | 26,821 | 21,973 | 30,681 | 1,550 | 3,298 |
| 2012/13 | nr | 3,298 | 27,150 | 0 | 30,448 | 23,937 | 35,009 | 1,950 | 4,561 |
| 2013/14 | nr | 4,561 | 29,528 | 0 | 34,089 | 27,473 | 38,503 | 2,200 | 4,416 |
| 2014/15 | nr | 4,416 | 34,737 | 1 | 39,154 | 31,873 | 45,110 | 2,524 | 4,757 |
| 2015/16 | nr | 4,757 | 33,350 | 0 | 38,107 | 30,981 | 43,042 | 2,759 | 4,367 |
| 2016/17 | nr | 4,367 | 31,750 | 0 | 36,117 | 29,255 | 40,940 | 2,930 | 3,932 |
| 2017/18 | nr | 3,932 | 28,270 | 1 | 32,203 | 25,849 | 36,359 | 3,084 | 3,270 |
| 2018/19 | nr | 3,270 | 32,000 | 27 | 35,297 | 29,285 | 41,188 | 3,175 | 2,837 |
| 2019/20 | nr | 2,837 | 29,539 | 1 | 32,377 | 26,584 | 37,870 | 3,217 | 2,576 |
| 2020/21 | nr | 2,576 | 32,050 | 1 | 34,627 | 28,652 | 41,043 | 3,300 | 2,675 |
| 2021/22 | nr | 2,675 | 28,002 | 194 | 30,871 | 24,849 | 35,900 | 3,325 | 2,697 |
| 2022/23 | nr | 2,697 | 22,612 | 8 | 25,317 | 19,115 | 28,997 | 3,400 | 2,802 |
| 2023/24 | nr | 2,802 | 31,980 | 1 | 34,783 | 28,500 | 41,000 | 3,500 | 2,783 |
| 2024/25 | nr | 2,783 | 32,370 | 1 | 35,154 | 28,600 | 41,500 | 3,700 | 2,854 |
| Oil, Soybean (Local) | | | | | | | | | |
| 2011/12 | nr | 391 | 5,840 | 35 | 6,266 | 3,433 | 30,681 | 2,550 | 283 |
| 2012/13 | nr | 283 | 6,616 | 59 | 6,958 | 4,281 | 35,009 | 2,375 | 302 |
| 2013/14 | nr | 302 | 7,191 | 26 | 7,519 | 4,296 | 38,503 | 2,843 | 380 |
| 2014/15 | nr | 380 | 8,753 | 5 | 9,138 | 6,312 | 45,110 | 2,308 | 518 |
| 2015/16 | nr | 518 | 8,382 | 0 | 8,900 | 5,386 | 43,042 | 3,055 | 459 |
| 2016/17 | nr | 459 | 7,925 | 0 | 8,384 | 4,721 | 40,940 | 3,290 | 373 |
| 2017/18 | nr | 373 | 7,150 | 1 | 7,524 | 4,566 | 36,359 | 2,610 | 348 |
| 2018/19 | nr | 348 | 8,044 | 0 | 8,392 | 5,113 | 41,188 | 2,625 | 654 |
| 2019/20 | nr | 654 | 7,460 | 0 | 8,114 | 6,150 | 37,870 | 1,790 | 174 |
| 2020/21 | nr | 174 | 8,102 | 15 | 8,291 | 5,480 | 41,043 | 2,195 | 616 |
| 2021/22 | nr | 616 | 7,079 | 78 | 7,773 | 4,575 | 35,900 | 2,750 | 448 |
| 2022/23 | nr | 448 | 5,726 | 0 | 6,174 | 4,178 | 28,997 | 1,760 | 236 |
| 2023/24 | nr | 236 | 8,098 | 10 | 8,344 | 5,850 | 41,000 | 2,150 | 344 |
| 2024/25 | nr | 344 | 8,196 | 10 | 8,550 | 5,500 | 41,500 | 2,660 | 390 |

Data based on Argentina's Local April/March Marketing Year (MY). Where April 2012 - March 2013 is the 2011/12 MY.

Table 24: South East Asia Oilseeds and Products Supply and Distribution

Thousand Metric Tons

| | 2020/21 | 2021/22 | 2022/23 | 2023/24 | Nov 2024/25 | Dec 2024/25 |
|------------------------------|---------------|---------------|---------------|---------------|----------------|----------------|
| Production | | | | | | |
| Oilseed, Copra | 4,455 | 4,667 | 4,667 | 4,977 | 4,567 | 4,567 |
| Oilseed, Palm Kernel | 16,624 | 16,228 | 17,078 | 16,794 | 17,933 | 17,714 |
| Oilseed, Soybean | 726 | 666 | 621 | 598 | 575 | 575 |
| Other | 3,533 | 3,563 | 3,679 | 3,653 | 3,660 | 3,660 |
| Total | 25,338 | 25,124 | 26,045 | 26,022 | 26,735 | 26,516 |
| Domestic Consumption | | | | | | |
| Meal, Fish | 843 | 856 | 864 | 890 | 855 | 855 |
| Meal, Palm Kernel | 2,052 | 1,620 | 2,008 | 2,496 | 2,351 | 2,266 |
| Meal, Soybean | 21,358 | 21,935 | 21,433 | 21,213 | 23,133 | 22,898 |
| Other | 2,174 | 1,945 | 2,508 | 2,446 | 2,291 | 2,291 |
| Total | 26,427 | 26,356 | 26,813 | 27,045 | 28,630 | 28,310 |
| SME | | | | | | |
| Meal, Fish | 1,218 | 1,237 | 1,248 | 1,286 | 1,235 | 1,235 |
| Meal, Palm Kernel | 730 | 576 | 714 | 888 | 836 | 806 |
| Meal, Soybean | 21,278 | 21,850 | 21,348 | 21,123 | 23,038 | 22,803 |
| Other | 1,427 | 1,303 | 1,677 | 1,622 | 1,550 | 1,550 |
| Total | 24,653 | 24,966 | 24,988 | 24,919 | 26,659 | 26,394 |
| Imports | | | | | | |
| Meal, Fish | 329 | 342 | 365 | 360 | 370 | 370 |
| Meal, Palm Kernel | 900 | 809 | 988 | 915 | 919 | 919 |
| Meal, Soybean | 18,085 | 19,010 | 18,229 | 17,976 | 20,200 | 19,940 |
| Other | 681 | 542 | 966 | 874 | 796 | 796 |
| Total | 19,995 | 20,703 | 20,548 | 20,125 | 22,285 | 22,025 |
| Industrial Dom. Cons. | | | | | | |
| Oil, Palm | 13,212 | 14,281 | 16,335 | 17,700 | 18,365 | 18,815 |
| Oil, Rapeseed | 0 | 0 | 0 | 0 | 0 | 0 |
| Oil, Soybean | 54 | 54 | 54 | 54 | 54 | 54 |
| Oil, Sunflowerseed | 0 | 0 | 0 | 0 | 0 | 0 |
| Other | 4,969 | 4,956 | 5,148 | 5,097 | 5,507 | 5,382 |
| Total | 18,235 | 19,291 | 21,537 | 22,851 | 23,926 | 24,251 |
| Food Use Dom. Cons. | | | | | | |
| Oil, Palm | 11,030 | 11,460 | 11,720 | 12,170 | 12,462 | 12,527 |
| Oil, Rapeseed | 13 | 14 | 16 | 24 | 17 | 17 |
| Oil, Soybean | 795 | 731 | 542 | 543 | 624 | 629 |
| Oil, Sunflowerseed | 158 | 143 | 143 | 146 | 146 | 146 |
| Other | 1,653 | 1,649 | 1,684 | 1,667 | 1,772 | 1,747 |
| Total | 13,649 | 13,997 | 14,105 | 14,550 | 15,021 | 15,066 |
| Domestic Consumption | | | | | | |
| Oil, Palm | 24,627 | 26,125 | 28,492 | 30,264 | 31,247 | 31,727 |
| Oil, Rapeseed | 13 | 14 | 16 | 24 | 17 | 17 |
| Oil, Soybean | 849 | 785 | 596 | 597 | 678 | 683 |
| Oil, Sunflowerseed | 158 | 143 | 143 | 146 | 146 | 146 |
| Other | 6,632 | 6,615 | 6,842 | 6,774 | 7,289 | 7,139 |
| Total | 32,279 | 33,682 | 36,089 | 37,805 | 39,377 | 39,712 |
| Imports | | | | | | |
| Oil, Palm | 4,459 | 4,221 | 3,761 | 3,262 | 3,472 | 3,322 |
| Oil, Rapeseed | 12 | 13 | 16 | 24 | 14 | 14 |
| Oil, Soybean | 295 | 236 | 267 | 248 | 255 | 255 |
| Oil, Sunflowerseed | 27 | 12 | 12 | 15 | 15 | 15 |
| Other | 708 | 840 | 556 | 587 | 633 | 598 |
| Total | 5,501 | 5,322 | 4,612 | 4,136 | 4,389 | 4,204 |

Southeast Asia includes Brunei, Burma, Cambodia, Indonesia, Laos, Malaysia, Philippines, Singapore, Thailand, and Vietnam. SME - 44 Percent Protein Soybean Meal Equivalent

Table 25: Middle East Oilseeds and Products Supply and Distribution

Thousand Metric Tons

| | 2020/21 | 2021/22 | 2022/23 | 2023/24 | Nov 2024/25 | Dec 2024/25 |
|------------------------------|---------------|---------------|---------------|---------------|----------------|----------------|
| Production | | | | | | |
| Oilseed, Cottonseed | 1,165 | 1,413 | 1,848 | 1,230 | 1,508 | 1,508 |
| Oilseed, Rapeseed | 415 | 430 | 470 | 470 | 475 | 475 |
| Oilseed, Soybean | 285 | 289 | 317 | 309 | 324 | 324 |
| Oilseed, Sunflowerseed | 1,608 | 1,796 | 1,946 | 1,595 | 1,424 | 1,424 |
| Other | 216 | 234 | 186 | 200 | 205 | 205 |
| Total | 3,689 | 4,162 | 4,767 | 3,804 | 3,936 | 3,936 |
| Domestic Consumption | | | | | | |
| Meal, Cottonseed | 648 | 787 | 998 | 691 | 839 | 839 |
| Meal, Soybean | 9,361 | 9,608 | 9,321 | 11,295 | 11,520 | 11,720 |
| Meal, Sunflowerseed | 2,695 | 2,258 | 2,240 | 2,418 | 1,969 | 1,969 |
| Other | 1,297 | 1,042 | 1,241 | 1,160 | 1,292 | 1,292 |
| Total | 14,001 | 13,695 | 13,800 | 15,564 | 15,620 | 15,820 |
| SME | | | | | | |
| Meal, Cottonseed | 525 | 638 | 809 | 560 | 680 | 680 |
| Meal, Soybean | 9,359 | 9,606 | 9,319 | 11,295 | 11,520 | 11,720 |
| Meal, Sunflowerseed | 1,798 | 1,506 | 1,494 | 1,613 | 1,313 | 1,313 |
| Other | 871 | 757 | 918 | 869 | 950 | 950 |
| Total | 12,552 | 12,506 | 12,539 | 14,337 | 14,463 | 14,663 |
| Imports | | | | | | |
| Meal, Cottonseed | 35 | 57 | 12 | 41 | 38 | 38 |
| Meal, Soybean | 6,050 | 6,230 | 5,317 | 8,433 | 7,085 | 7,285 |
| Meal, Sunflowerseed | 1,027 | 992 | 1,047 | 1,502 | 1,110 | 1,110 |
| Other | 873 | 828 | 700 | 713 | 805 | 805 |
| Total | 7,985 | 8,107 | 7,076 | 10,689 | 9,038 | 9,238 |
| Imports | | | | | | |
| Oil, Palm | 2,912 | 3,277 | 3,292 | 3,663 | 3,570 | 3,570 |
| Oil, Rapeseed | 84 | 81 | 112 | 86 | 110 | 110 |
| Oil, Soybean | 613 | 540 | 512 | 149 | 546 | 546 |
| Oil, Sunflowerseed | 2,470 | 2,880 | 3,591 | 3,351 | 3,037 | 3,037 |
| Other | 233 | 227 | 253 | 220 | 224 | 224 |
| Total | 6,312 | 7,005 | 7,760 | 7,469 | 7,487 | 7,487 |
| Industrial Dom. Cons. | | | | | | |
| Oil, Palm | 180 | 225 | 245 | 240 | 240 | 240 |
| Oil, Rapeseed | 10 | 10 | 25 | 25 | 25 | 25 |
| Oil, Soybean | 75 | 65 | 65 | 57 | 57 | 57 |
| Oil, Sunflowerseed | 20 | 20 | 25 | 25 | 25 | 25 |
| Other | 56 | 50 | 36 | 39 | 43 | 43 |
| Total | 341 | 370 | 396 | 386 | 390 | 390 |
| Food Use Dom. Cons. | | | | | | |
| Oil, Palm | 2,160 | 2,366 | 2,567 | 2,641 | 2,810 | 2,810 |
| Oil, Rapeseed | 281 | 265 | 344 | 310 | 365 | 365 |
| Oil, Soybean | 1,072 | 1,114 | 1,088 | 930 | 1,169 | 1,169 |
| Oil, Sunflowerseed | 2,869 | 2,892 | 3,057 | 3,405 | 3,077 | 3,077 |
| Other | 658 | 683 | 738 | 594 | 682 | 682 |
| Total | 7,040 | 7,320 | 7,794 | 7,880 | 8,103 | 8,103 |
| Domestic Consumption | | | | | | |
| Oil, Palm | 2,340 | 2,591 | 2,812 | 2,881 | 3,050 | 3,050 |
| Oil, Rapeseed | 291 | 275 | 369 | 335 | 390 | 390 |
| Oil, Soybean | 1,172 | 1,189 | 1,158 | 992 | 1,231 | 1,231 |
| Oil, Sunflowerseed | 2,899 | 2,922 | 3,097 | 3,445 | 3,117 | 3,117 |
| Other | 730 | 749 | 791 | 649 | 740 | 740 |
| Total | 7,432 | 7,726 | 8,227 | 8,302 | 8,528 | 8,528 |

Middle East includes Bahrain, Iran, Iraq, Israel, Jordan, Kuwait, Lebanon, Oman, Qatar, Saudi Arabia, Syria, Turkey, United Arab Emirates, and Yemen. SME - 44 Percent Protein Soybean Meal Equivalent

Table 26: European Union Oilseeds and Products Supply and Distribution

Thousand Metric Tons

| | 2020/21 | 2021/22 | 2022/23 | 2023/24 | Nov 2024/25 | Dec 2024/25 |
|------------------------------|---------------|---------------|---------------|---------------|----------------|----------------|
| Production | | | | | | |
| Oilseed, Rapeseed | 16,732 | 17,353 | 19,612 | 19,934 | 17,350 | 17,240 |
| Oilseed, Soybean | 2,600 | 2,833 | 2,610 | 2,947 | 2,900 | 2,850 |
| Oilseed, Sunflowerseed | 8,897 | 10,328 | 9,386 | 10,125 | 9,430 | 8,780 |
| Other | 542 | 534 | 526 | 334 | 403 | 403 |
| Total | 28,771 | 31,048 | 32,134 | 33,340 | 30,083 | 29,273 |
| Domestic Consumption | | | | | | |
| Meal, Rapeseed | 12,500 | 12,300 | 13,800 | 13,900 | 13,850 | 13,850 |
| Meal, Soybean | 28,342 | 27,742 | 26,742 | 26,942 | 27,442 | 27,592 |
| Meal, Sunflowerseed | 6,260 | 7,160 | 6,860 | 7,060 | 6,410 | 6,410 |
| Other | 1,916 | 2,058 | 2,307 | 1,910 | 1,887 | 1,887 |
| Total | 49,018 | 49,260 | 49,709 | 49,812 | 49,589 | 49,739 |
| SME | | | | | | |
| Meal, Rapeseed | 8,894 | 8,751 | 9,819 | 9,890 | 9,854 | 9,854 |
| Meal, Soybean | 28,300 | 27,700 | 26,700 | 26,900 | 27,400 | 27,550 |
| Meal, Sunflowerseed | 4,135 | 4,736 | 4,536 | 4,669 | 4,235 | 4,235 |
| Other | 1,062 | 1,161 | 1,256 | 1,056 | 1,062 | 1,062 |
| Total | 42,391 | 42,348 | 42,311 | 42,515 | 42,551 | 42,701 |
| Imports | | | | | | |
| Meal, Rapeseed | 467 | 576 | 843 | 823 | 1,000 | 1,000 |
| Meal, Soybean | 16,504 | 16,536 | 16,012 | 16,527 | 16,200 | 16,500 |
| Meal, Sunflowerseed | 2,571 | 2,563 | 2,756 | 3,155 | 2,400 | 2,700 |
| Other | 1,668 | 1,767 | 1,971 | 1,642 | 1,598 | 1,598 |
| Total | 21,210 | 21,442 | 21,582 | 22,147 | 21,198 | 21,798 |
| Industrial Dom. Cons. | | | | | | |
| Oil, Palm | 3,860 | 2,700 | 2,200 | 1,800 | 1,750 | 1,750 |
| Oil, Rapeseed | 6,675 | 6,600 | 6,975 | 7,050 | 6,950 | 6,950 |
| Oil, Soybean | 1,100 | 1,100 | 1,100 | 1,100 | 1,100 | 1,200 |
| Oil, Sunflowerseed | 500 | 525 | 550 | 550 | 550 | 500 |
| Other | 585 | 587 | 555 | 555 | 535 | 535 |
| Total | 12,720 | 11,512 | 11,380 | 11,055 | 10,885 | 10,935 |
| Food Use Dom. Cons. | | | | | | |
| Oil, Palm | 2,300 | 1,950 | 2,050 | 1,900 | 2,000 | 2,000 |
| Oil, Rapeseed | 2,400 | 2,600 | 2,900 | 2,850 | 2,800 | 2,800 |
| Oil, Soybean | 1,275 | 1,150 | 1,250 | 1,425 | 1,375 | 1,400 |
| Oil, Sunflowerseed | 4,300 | 4,750 | 4,650 | 4,850 | 4,750 | 4,725 |
| Other | 2,247 | 2,189 | 1,897 | 1,867 | 2,025 | 2,025 |
| Total | 12,522 | 12,639 | 12,747 | 12,892 | 12,950 | 12,950 |
| Domestic Consumption | | | | | | |
| Oil, Palm | 6,360 | 4,850 | 4,400 | 3,830 | 3,850 | 3,850 |
| Oil, Rapeseed | 9,125 | 9,250 | 9,925 | 9,950 | 9,800 | 9,800 |
| Oil, Soybean | 2,430 | 2,305 | 2,405 | 2,580 | 2,530 | 2,655 |
| Oil, Sunflowerseed | 4,813 | 5,288 | 5,213 | 5,413 | 5,313 | 5,238 |
| Other | 2,845 | 2,789 | 2,457 | 2,422 | 2,560 | 2,560 |
| Total | 25,573 | 24,482 | 24,400 | 24,195 | 24,053 | 24,103 |
| Imports | | | | | | |
| Oil, Palm | 5,951 | 5,015 | 4,548 | 3,800 | 4,000 | 4,000 |
| Oil, Rapeseed | 314 | 593 | 402 | 463 | 450 | 450 |
| Oil, Soybean | 493 | 459 | 623 | 587 | 525 | 650 |
| Oil, Sunflowerseed | 1,599 | 2,178 | 2,103 | 2,964 | 2,000 | 2,175 |
| Other | 1,570 | 1,575 | 1,477 | 1,549 | 1,405 | 1,405 |
| Total | 9,927 | 9,820 | 9,153 | 9,363 | 8,380 | 8,680 |

European Union includes Austria, Belgium, Bulgaria, Croatia, Cyprus, Czech Republic, Denmark, Estonia, Finland, France, Germany, Greece, Hungary, Ireland, Italy, Latvia, Lithuania, Luxembourg, Malta, Netherlands, Poland, Portugal, Romania, Slovakia, Slovenia, Spain, and Sweden.

Table 27: China Oilseeds and Products Supply and Distribution

Thousand Metric Tons

| | 2020/21 | 2021/22 | 2022/23 | 2023/24 | Nov 2024/25 | Dec 2024/25 |
|-----------------------------|----------------|---------------|----------------|----------------|----------------|----------------|
| Production | | | | | | |
| Oilseed, Peanut | 17,993 | 18,308 | 18,330 | 19,217 | 19,000 | 19,000 |
| Oilseed, Rapeseed | 14,049 | 14,714 | 15,531 | 16,321 | 15,800 | 15,800 |
| Oilseed, Soybean | 19,602 | 16,395 | 20,284 | 20,840 | 20,700 | 20,700 |
| Oilseed, Sunflowerseed | 2,570 | 2,154 | 1,741 | 1,983 | 1,750 | 1,750 |
| Other | 11,482 | 10,463 | 12,051 | 10,718 | 11,051 | 11,051 |
| Total | 65,696 | 62,034 | 67,937 | 69,079 | 68,301 | 68,301 |
| Imports | | | | | | |
| Oilseed, Peanut | 1,373 | 785 | 940 | 774 | 700 | 700 |
| Oilseed, Rapeseed | 2,795 | 1,657 | 5,335 | 5,486 | 3,400 | 3,000 |
| Oilseed, Soybean | 99,740 | 90,297 | 104,500 | 112,000 | 109,000 | 109,000 |
| Oilseed, Sunflowerseed | 137 | 157 | 268 | 183 | 200 | 200 |
| Other | 72 | 297 | 665 | 690 | 500 | 500 |
| Total | 104,117 | 93,193 | 111,708 | 119,133 | 113,800 | 113,400 |
| Domestic Consumption | | | | | | |
| Meal, Peanut | 4,090 | 4,077 | 4,005 | 3,973 | 3,958 | 3,958 |
| Meal, Rapeseed | 11,404 | 11,951 | 12,923 | 14,519 | 14,497 | 14,497 |
| Meal, Soybean | 74,425 | 71,100 | 75,050 | 77,150 | 80,550 | 80,550 |
| Other | 10,225 | 9,895 | 11,429 | 11,270 | 11,305 | 11,305 |
| Total | 100,144 | 97,023 | 103,407 | 106,912 | 110,310 | 110,310 |
| SME | | | | | | |
| Meal, Peanut | 4,597 | 4,583 | 4,502 | 4,466 | 4,449 | 4,449 |
| Meal, Rapeseed | 7,776 | 8,165 | 8,857 | 9,992 | 9,973 | 9,973 |
| Meal, Soybean | 73,300 | 70,000 | 73,900 | 76,000 | 79,400 | 79,400 |
| Other | 8,680 | 8,426 | 9,212 | 9,407 | 9,262 | 9,262 |
| Total | 94,353 | 91,174 | 96,470 | 99,865 | 103,084 | 103,084 |
| Food Use Dom. Cons. | | | | | | |
| Oil, Palm | 4,200 | 3,300 | 3,200 | 2,850 | 3,700 | 3,150 |
| Oil, Peanut | 3,567 | 3,323 | 3,418 | 3,373 | 3,344 | 3,344 |
| Oil, Rapeseed | 8,000 | 8,500 | 8,900 | 9,750 | 9,600 | 9,700 |
| Oil, Soybean | 17,800 | 17,100 | 17,000 | 18,150 | 18,800 | 18,900 |
| Oil, Sunflowerseed | 2,067 | 955 | 1,803 | 1,419 | 1,212 | 1,312 |
| Other | 1,640 | 1,646 | 1,705 | 1,572 | 1,616 | 1,616 |
| Total | 37,274 | 34,824 | 36,026 | 37,114 | 38,272 | 38,022 |
| Domestic Consumption | | | | | | |
| Oil, Palm | 6,550 | 5,100 | 5,600 | 4,950 | 5,800 | 5,150 |
| Oil, Peanut | 3,567 | 3,323 | 3,418 | 3,373 | 3,344 | 3,344 |
| Oil, Rapeseed | 8,000 | 8,500 | 8,900 | 9,750 | 9,600 | 9,700 |
| Oil, Soybean | 17,800 | 17,100 | 17,000 | 18,150 | 18,800 | 18,900 |
| Oil, Sunflowerseed | 2,067 | 955 | 1,803 | 1,419 | 1,212 | 1,312 |
| Other | 2,278 | 2,169 | 2,452 | 2,254 | 2,366 | 2,366 |
| Total | 40,262 | 37,147 | 39,173 | 39,896 | 41,122 | 40,772 |
| Imports | | | | | | |
| Oil, Palm | 6,818 | 4,387 | 6,190 | 4,377 | 5,900 | 5,150 |
| Oil, Peanut | 346 | 166 | 292 | 247 | 250 | 250 |
| Oil, Rapeseed | 2,365 | 973 | 1,998 | 2,040 | 1,900 | 1,900 |
| Oil, Soybean | 1,221 | 291 | 395 | 381 | 400 | 500 |
| Oil, Sunflowerseed | 1,640 | 513 | 1,555 | 1,207 | 1,000 | 1,100 |
| Other | 862 | 798 | 967 | 884 | 995 | 995 |
| Total | 13,252 | 7,128 | 11,397 | 9,136 | 10,445 | 9,895 |

SME - 44 Percent Protein Soybean Meal Equivalent

Table 28: India Oilseeds and Products Supply and Distribution

Thousand Metric Tons

| | 2020/21 | 2021/22 | 2022/23 | 2023/24 | Nov 2024/25 | Dec 2024/25 |
|-----------------------------|---------------|---------------|---------------|---------------|----------------|----------------|
| Production | | | | | | |
| Oilseed, Cottonseed | 11,675 | 10,316 | 11,166 | 10,783 | 10,189 | 10,614 |
| Oilseed, Peanut | 7,300 | 8,700 | 6,300 | 6,000 | 7,100 | 7,100 |
| Oilseed, Rapeseed | 8,600 | 11,100 | 11,200 | 11,600 | 12,100 | 12,100 |
| Oilseed, Soybean | 10,456 | 11,889 | 12,411 | 11,875 | 12,582 | 12,582 |
| Oilseed, Sunflowerseed | 150 | 140 | 215 | 112 | 113 | 113 |
| Other | 1,003 | 1,021 | 1,022 | 1,021 | 1,021 | 1,021 |
| Total | 39,184 | 43,166 | 42,314 | 41,391 | 43,105 | 43,530 |
| Domestic Consumption | | | | | | |
| Meal, Cottonseed | 4,584 | 4,238 | 4,443 | 4,409 | 4,205 | 4,205 |
| Meal, Rapeseed | 3,650 | 4,375 | 4,350 | 4,600 | 4,860 | 4,840 |
| Meal, Soybean | 5,850 | 6,273 | 6,625 | 7,075 | 7,550 | 7,535 |
| Other | 2,445 | 2,348 | 2,176 | 2,069 | 2,234 | 2,234 |
| Total | 16,529 | 17,234 | 17,594 | 18,153 | 18,849 | 18,814 |
| SME | | | | | | |
| Meal, Cottonseed | 3,714 | 3,434 | 3,600 | 3,573 | 3,407 | 3,407 |
| Meal, Rapeseed | 2,597 | 3,113 | 3,095 | 3,273 | 3,458 | 3,444 |
| Meal, Soybean | 5,500 | 5,873 | 6,225 | 6,625 | 7,075 | 7,060 |
| Other | 2,191 | 2,177 | 2,021 | 1,903 | 2,069 | 2,069 |
| Total | 14,003 | 14,597 | 14,941 | 15,373 | 16,009 | 15,980 |
| Food Use Dom. Cons. | | | | | | |
| Oil, Cottonseed | 1,360 | 1,250 | 1,315 | 1,290 | 1,280 | 1,280 |
| Oil, Palm | 8,850 | 7,800 | 8,300 | 8,340 | 9,800 | 9,500 |
| Oil, Peanut | 1,160 | 1,185 | 1,050 | 995 | 1,115 | 1,115 |
| Oil, Rapeseed | 2,700 | 3,700 | 3,600 | 3,900 | 4,000 | 4,000 |
| Oil, Soybean | 4,950 | 5,825 | 5,400 | 5,175 | 5,775 | 6,000 |
| Oil, Sunflowerseed | 2,250 | 1,900 | 2,750 | 3,525 | 2,075 | 2,125 |
| Other | 400 | 375 | 400 | 410 | 415 | 415 |
| Total | 21,670 | 22,035 | 22,815 | 23,635 | 24,460 | 24,435 |
| Domestic Consumption | | | | | | |
| Oil, Cottonseed | 1,408 | 1,295 | 1,361 | 1,345 | 1,320 | 1,320 |
| Oil, Palm | 9,225 | 8,150 | 8,900 | 8,990 | 10,450 | 10,150 |
| Oil, Peanut | 1,170 | 1,195 | 1,060 | 1,005 | 1,125 | 1,125 |
| Oil, Rapeseed | 2,780 | 3,780 | 3,680 | 3,980 | 4,080 | 4,080 |
| Oil, Soybean | 4,950 | 5,825 | 5,400 | 5,175 | 5,775 | 6,000 |
| Oil, Sunflowerseed | 2,250 | 1,900 | 2,750 | 3,525 | 2,075 | 2,125 |
| Other | 747 | 674 | 710 | 730 | 790 | 790 |
| Total | 22,530 | 22,819 | 23,861 | 24,750 | 25,615 | 25,590 |
| Imports | | | | | | |
| Oil, Cottonseed | 8 | 4 | 1 | 0 | 5 | 5 |
| Oil, Palm | 8,411 | 8,004 | 10,045 | 8,886 | 9,900 | 9,400 |
| Oil, Peanut | 0 | 0 | 0 | 0 | 0 | 0 |
| Oil, Rapeseed | 25 | 34 | 6 | 6 | 5 | 5 |
| Oil, Soybean | 3,251 | 4,231 | 3,968 | 3,308 | 3,600 | 3,800 |
| Oil, Sunflowerseed | 1,958 | 1,956 | 2,988 | 3,516 | 1,800 | 1,800 |
| Other | 157 | 80 | 111 | 131 | 190 | 190 |
| Total | 13,810 | 14,309 | 17,119 | 15,847 | 15,500 | 15,200 |

SME - 44 Percent Protein Soybean Meal Equivalent