



Finishes You've Never Seen Before®



THE ULTIMATE METAL ROOFING **COLOR CATALOG** FOR EVERY PROJECT, EVERY TIME

When design and performance are at the top of the list for your next building project, look no further.
Find all the painted metal roofing and wall panels you need to make your job stand out.

A Design Guide For Architects, Contractors, & Homeowners



Where Design Matters

When ordinary isn't an option, add flare and distinction to any building with one of Western States Metal Roofing's painted metal roofing or panel options.

We offer more than 100 distinctive colors and paint prints, so you can take your building design to the next level. Our wide variety of color options and panel types have won the trust of award-winning architects and contractors. With Western States Metal Roofing, you can be sure your next project will make heads turn.

— For Architects

- Free Metal Samples
- Over 100 Colors To Choose From
- Online Specification Builder Tool
- Smart Textures For 3D Renderings
- E-Samples

— For Contractors

- Quick Lead Times
- Great Prices
- We Do Take Offs For You
- Onsite Roll Forming
- Delivery Anywhere Within The USA or Canada



We're There When & Where You Need Us

A tradition of family service that has extended its locations so that we can serve you better.

Locations:

Phoenix, Arizona

(877) 787-5467
sales@westernstatesmetalroofing.com

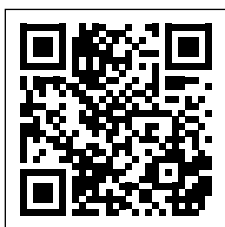
Manufacturing Facility

901 W Watkins Rd
Phoenix, AZ 85007

Coil & Flats Division

2140 S. 7th Ave.
Phoenix, AZ 85007

Visit our website.
Scan here



Tucson, Arizona

(520) 574-4247
tucsonsales@westernstatesmetalroofing.com

Distribution Hub

4975 E. Drexel, Tucson, AZ 85706

Dallas/Fort Worth, Texas

(972) 843-4343
texas-sales@westernstatesmetalroofing.com

Manufacturing Facility

15023 County Road 545, Nevada, TX 75173

Spokane Valley, Washington

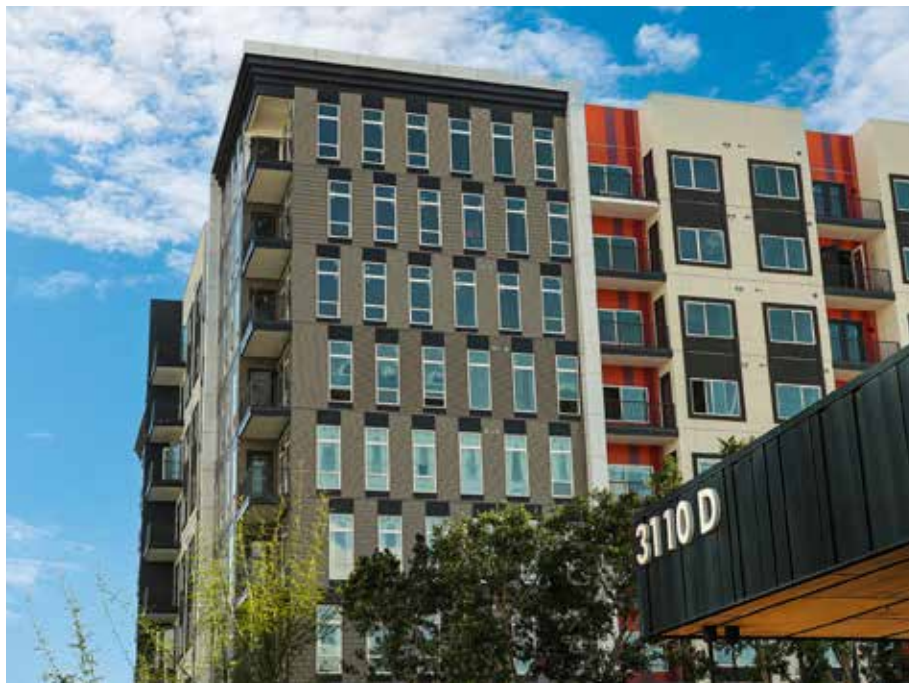
(509) 418-2833
washington-wsmr@westernstatesmetalroofing.com

Manufacturing Facility

3610 N. Barker Rd. STE C, Spokane Valley, WA 99027

— For Homeowners

- Buy Factory Direct
- Save Money
- Installation Videos
- Large Selection Of Colors
- Excellent Customer Service





Design Without Limits

When it comes to imagination, the sky's the limit. Our metal panels provide excellent performance and versatility, and are available in a variety of designs to give you the flexibility to create the perfect project. With our extensive product selection, you can make your vision come to life.

Exposed Fastener Panels



— 7/8" Corrugated



— PBR Panel - 1.25" Deep



Concealed Fastener Panels



— Western Lock®
Standing Seam - 1.75" Deep



— MS2® Mechanically
Seamed - 2" Deep



— Western Seam® Nail Strip -
1" Deep/1.5" Deep



— T-Groove® - 1" Deep



— Western Reveal® - 1.5" Deep



— Western Wave® - 7/8" Deep



— Board and Batten
Metal Siding



— T-8 PlankWall® Metal Panels
That Look Like Wood - 1" Deep



— Panel Design Options

- Stiffening Ribs
- Perforations
- Custom Lengths & Sizes



— Western Rib® (7.2 Panel) - 1.5" Deep



DESIGN TIP:

When completing the finished look of your project requires a certain stage of patina, use a painted print instead.



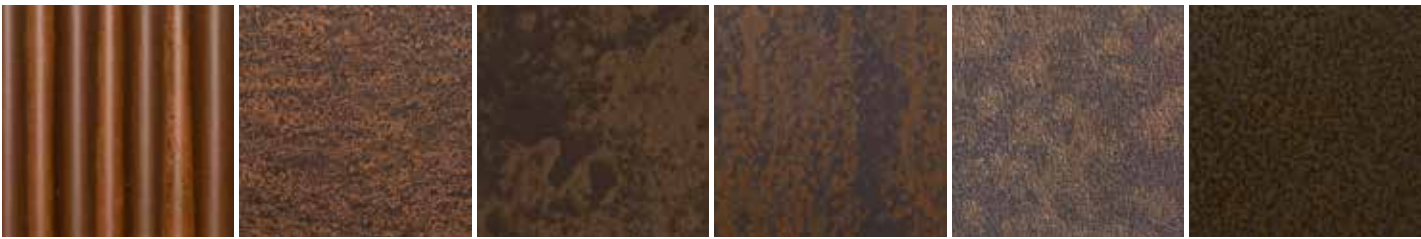
SPECIALTY PAINT PRINTS

Finishes You've Never Seen Before®

If you're looking for the classic look of an antique roof without the hassle, you should try specialty paint prints. This type of steel is designed to look old and is painted multiple times, giving it depth and character.



— PRE-PAINTED METAL THAT LOOKS RUSTED:

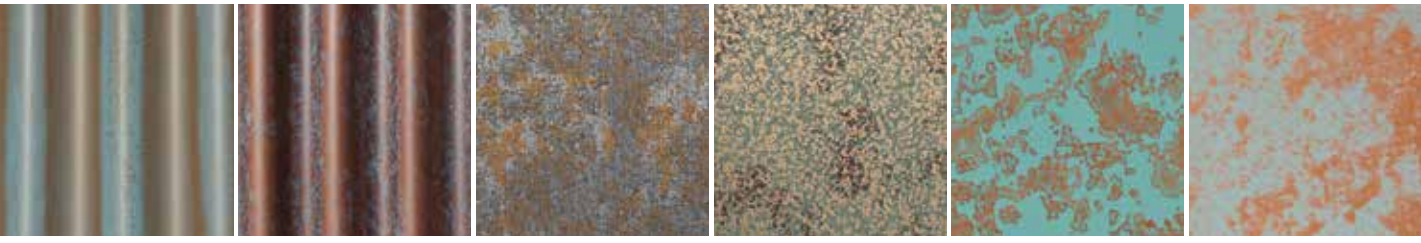


†Streaked Rust® Speckled Rust® Fresh Rust®* Corten AZP Raw® Rustic Rawhide® Weathered Rustic®



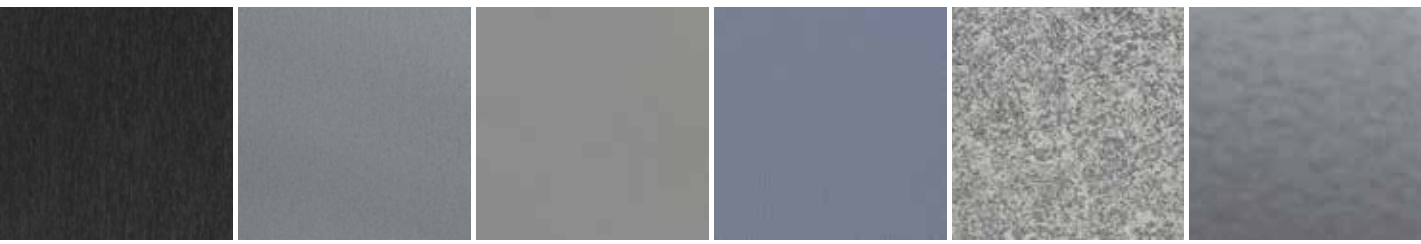
Weathered Metallic® ††Antique Rustic® Reclaimed Metal Rust® Speckled Galvanized Rust® †Streaked Galvanized Rust®

— PRE-PAINTED METAL THAT LOOKS LIKE PATINA'D COPPER:



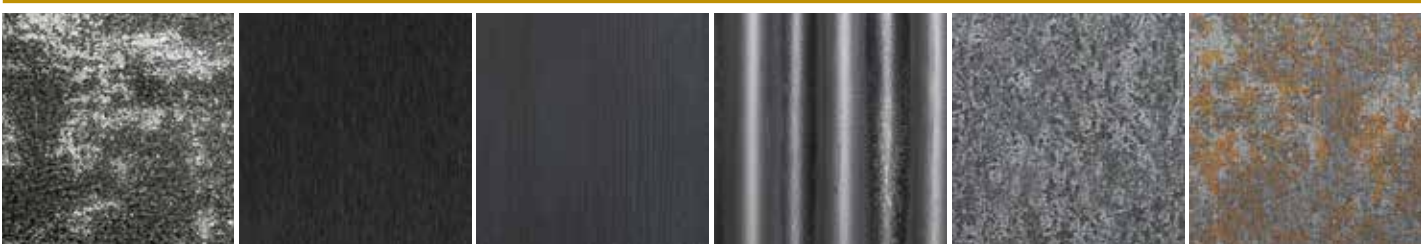
†Streaked Copper® †Streaked Blackened Copper® Blackened Copper® Copper Patina® Green Copper® Aged Copper®

— ZINC SERIES® / PRE-PAINTED METAL THAT LOOKS LIKE WEATHERED ZINC:



Black Zinc Matte® Gray Zinc Matte® Silver Zinc Matte® Blue Zinc Matte® Zinc Patina® Vintage®

— BLACKENED STEEL SERIES®:



Blackened Steel Matte® Black Zinc Matte® Burnt Wood® †Streaked Blackened Rust® Speckled Blackened Rust® Blackened Copper®

PLEASE NOTE: †7/8" Corrugated Only | †† SMP Paint Finish/26GA | *Also Available in Aluminum
 All specialty paint prints are batch sensitive and directional. Do not mix batches or coil lots.
 Colors represented on this chart may not exactly match actual material. All colors should be verified using actual metal samples.





DESIGN TIP:

Choose colors that create harmony and unity to create a sense of serenity, or work with contrasting colors to emphasize certain aspects of your design and liven up a space.



PVDF - STANDARD COLORS

The Best Paint Finish

PVDF paint, also known as Kynar®, is the best paint finish for metal panels because it provides superior color retention, meaning it retains its original color even after years of exposure to the elements. It is resistant to fading, chalking, and cracking, is extremely durable, weather-resistant, and UV-resistant. PVDF paint finishes are a great choice for any project, from residential to commercial applications.



— PVDF - STANDARD COLORS:



Regal Blue

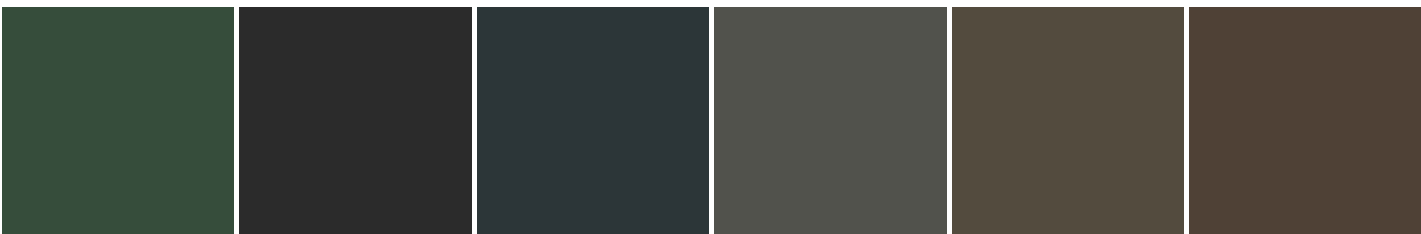
Royal Blue

Slate Blue

Regal Red

Colonial Red

Terra Cotta



Classic Green

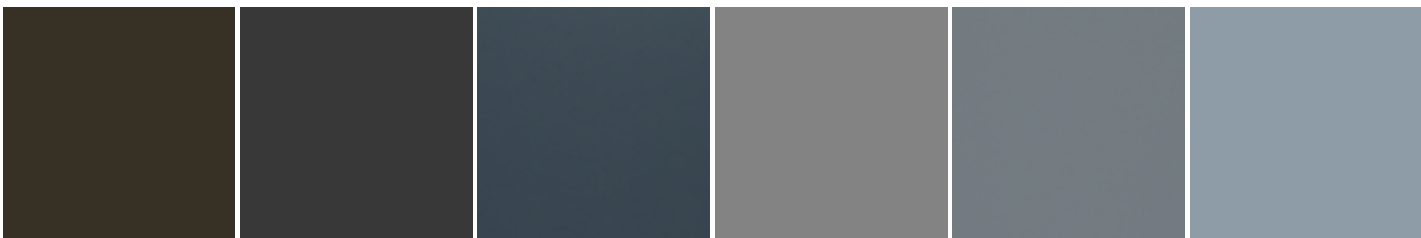
Matte Black

Matte Midnight
Black

Dark Bronze

Medium Bronze

Mansard Brown



Burnished Slate

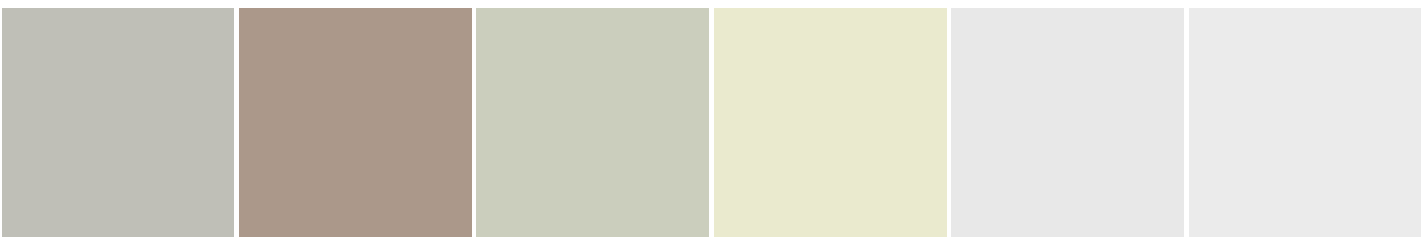
Charcoal Gray

Gun Metal Gray

Slate Gray

Dolphin Gray

Dove Gray



Ash Gray

Desert Tan

Sandstone

Almond

Bone White

Regal White

— PREMIUM COLORS - METALLIC FINISH:



Silver Metallic[†]

Zinc Metallic^{®†}

Champagne[†]

Copper Penny[†]

PLEASE NOTE: [†]This material is batch sensitive and directional. Do not mix batches or coil lots. Premium Colors. Slightly higher prices. Colors represented on this chart may not exactly match actual material. All colors should be verified using actual metal samples.





DESIGN TIP:

A matte finish can be useful when working with black because it can soften the sometimes harsh appearance that black or other dark colors might give off.



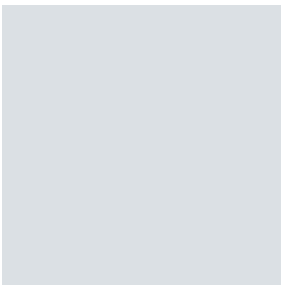
MATTE COLORS

Flat But Not Dull

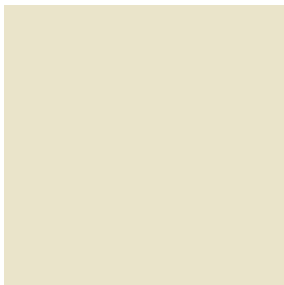
It's obvious that matte black has seen an uptick in design. But is it really black or the effect using matte colors has in design? Matte colors have a warm, inviting look that is elegant and not as intense as a glossy finish. Matte finishes blend naturally in soft environments and are designed to ultimately hide imperfections.



MATTE COLORS:



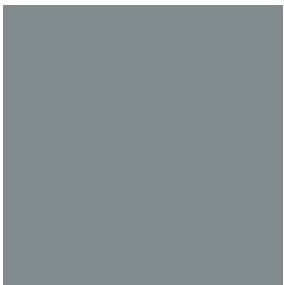
Matte Regal White*



Matte Sandstone*



Matte Desert Tan*



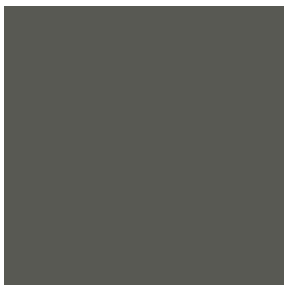
Matte Slate Gray*



Matte Musket Gray



Matte Zinc Metallic®



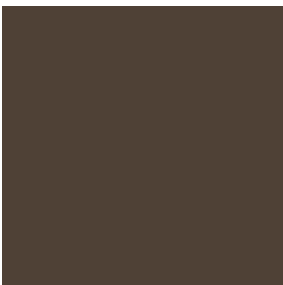
Matte Patina®



Matte Charcoal Gray



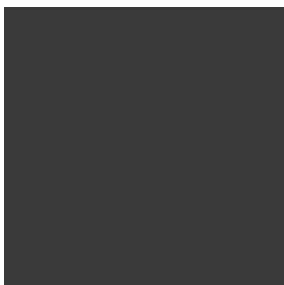
Matte Burnished Slate*



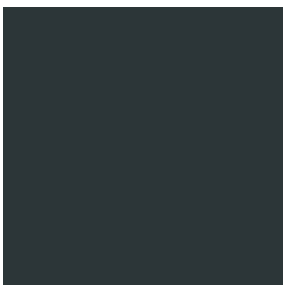
Matte Mansard Brown*



Matte Medium Bronze



Matte Dark Bronze



Matte Midnight Black



Matte Black



Matte Classic Green*



Matte Colonial Red*



Matte Orange



PLEASE NOTE: * Minimum Order of 2500 SQ. FT. MIN. / 4-8 Week Lead Time
Colors represented on this chart may not exactly match actual material. All colors should be verified using actual metal samples.



DESIGN TIP:

When using SMP paints, it is best to use lighter colors, as SMP paint systems tend to fade quicker than metal panels with PVDF paint finishes.



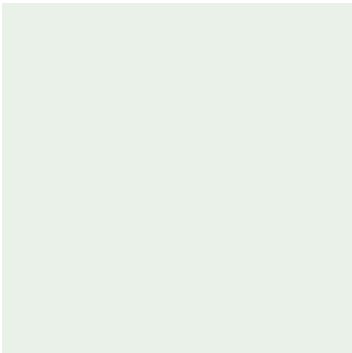
SMP - STANDARD COLORS

Where Cost Meets Value

The main advantage of SMP painted panels is that they cost less and are available in lighter gauges. The main disadvantage is that they have less resistance to UV exposure, resulting in greater fading and chalking.



SMP - STANDARD COLORS:



Polar White



Light Stone



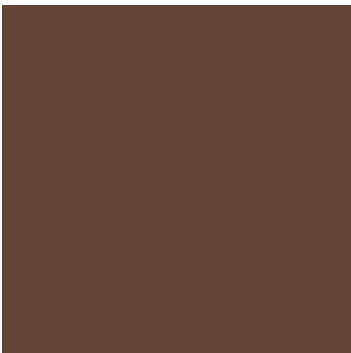
Sahara Tan



Desert Beige



Light Gray



Koko Brown



Emerald Green



Country Red

PREMIUM COLORS:



Steel Gray



Antique Rustic®



PLEASE NOTE: Colors represented on this chart may not exactly match actual material. All colors should be verified using actual metal samples.



DESIGN TIP:

These colors have longer lead times and cost more, so try to choose a standard color if possible.



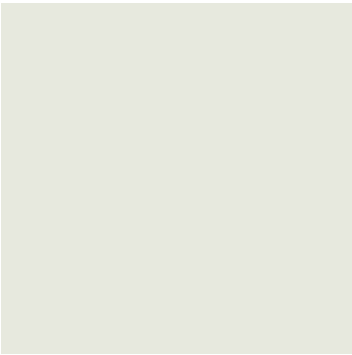
PVDF - SPECIAL ORDER COLORS (500 SQ. FT. MIN.)

More Colors To Choose From

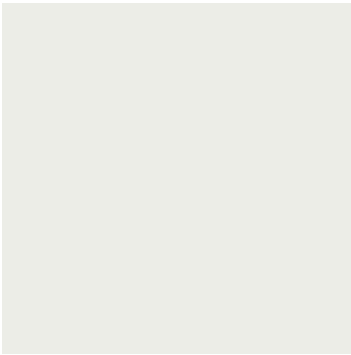
Some colors aren't popular enough to keep in stock. However, we want to make them available to you anyway. These colors will require a minimum of 500 square feet and require a longer lead time.



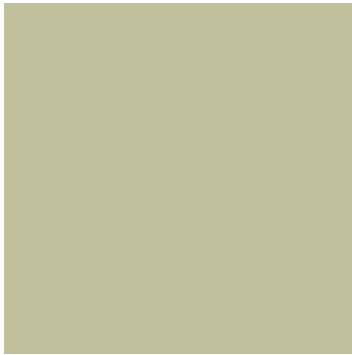
— PVDF - SPECIAL ORDER COLORS (500 SQ. FT. MIN.):



Solar White



Stone White



Surrey Beige



Sierra Tan



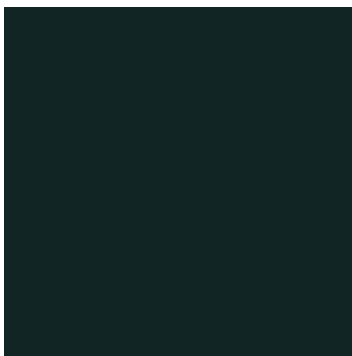
Aged Patina



Sage Green



Hemlock Green



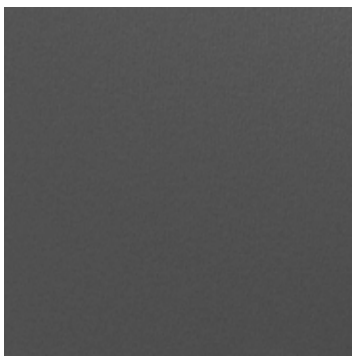
Hartford Green



Evergreen



Burgundy



Pre-Weathered Galvalume[†]

PLEASE NOTE:

PVDF | Cool Tech[®] 500 with COOL technology. Cool coating with premium heat-reflective technology from Dura Coat. Inquire for lead times. **Minimum order is 500 Sq. Ft.**

[†]This material is batch sensitive and directional. Do not mix batches or coil lots.

Colors represented on this chart may not exactly match actual material. All colors should be verified using actual metal samples.





DESIGN TIP:

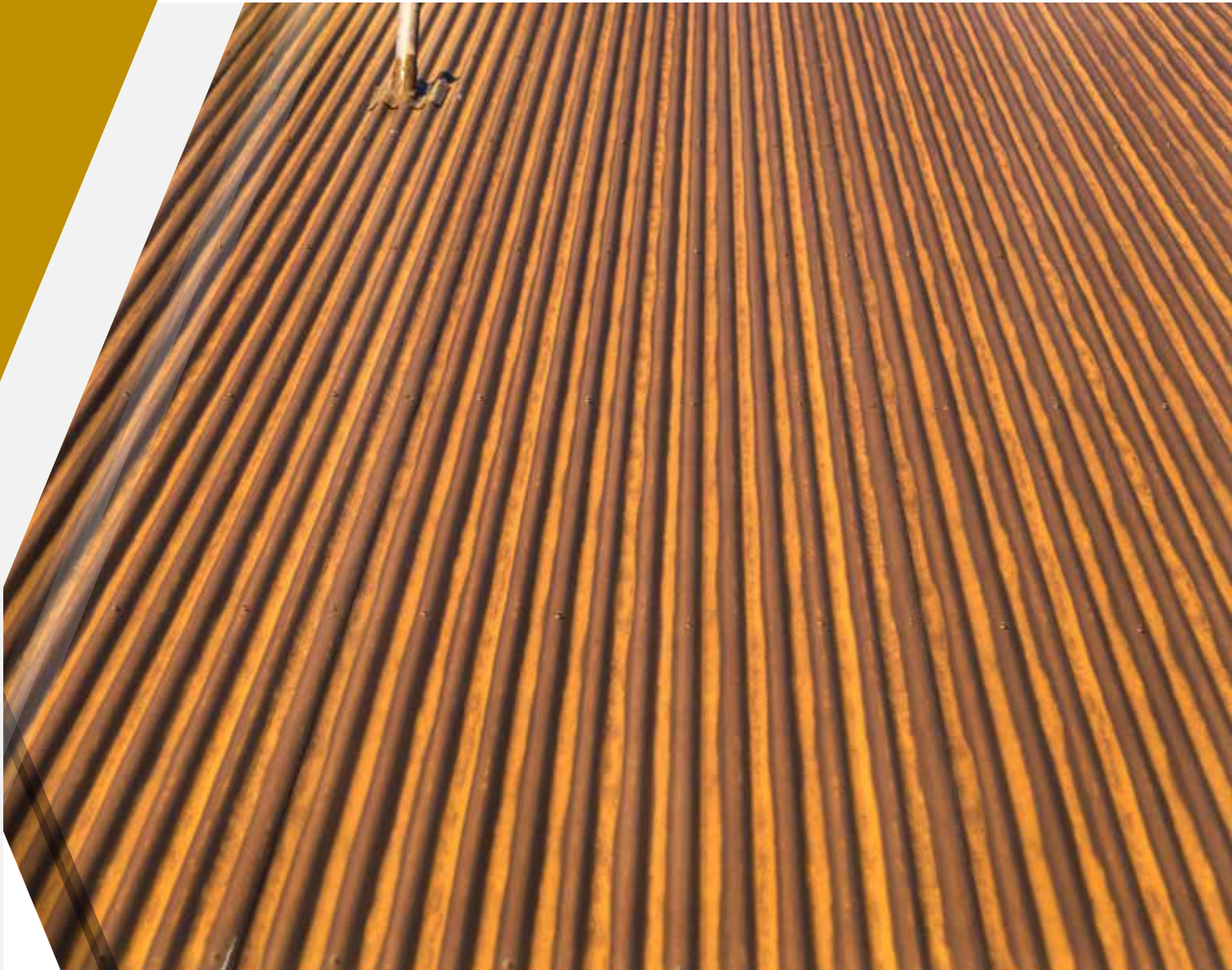
Corten does not have a warranty. If you need warrantable metal panels, we recommend painted rusted roofing.



RUSTED COLORS

Say Goodbye To Rust Stains

Incorporating rusted panels into your design can be a tough sell. Not only do you have to wait for the panels to rust, but you have to worry about rust stains, and there is no warranty. Painted panels that replicate the look of rust can solve these problems.



— RUSTED COLORS:



Streaked Rust® *



Speckled Rust®



Fresh Rust®



Corten AZP Raw®



Weathered Rustic®



Weathered Metallic®



Iron Rust®



Antique Rustic®



Reclaimed Metal Rust®



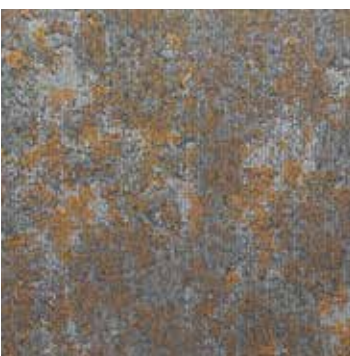
Streaked Galvanized Rust® *



Speckled Galvanized Rust®



Speckled Blackened Copper®



Blackened Copper®

PLEASE NOTE:

* Streaked prints are only available in 7/8" Corrugated panels. Colors represented on this chart may not exactly match actual material. All colors should be verified using actual metal samples.





DESIGN TIP:

Don't use painted metal panels in salt-laden environments; use real copper instead.



COPPER COLORS

The Look Of Copper At The Price Of Metal

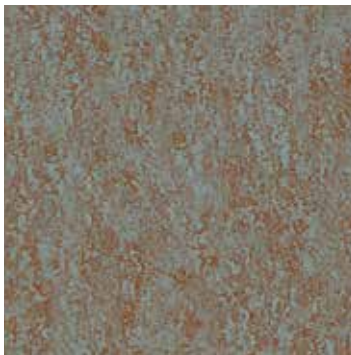
Why pay for an expensive copper roof? Copper-colored metal panels are designed to mimic the look of an old copper roof. These faux copper colors come in a variety of aged copper finishes that look authentic, but at about one-third the price of real copper.



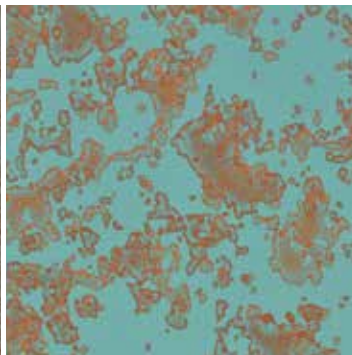
— COPPER COLORS:



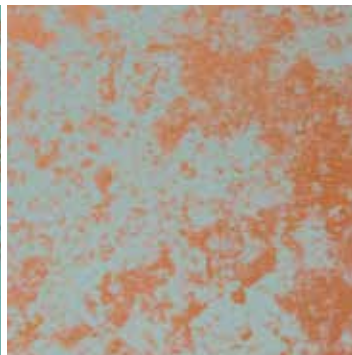
†Streaked Copper®



Speckled Copper®



Green Copper®



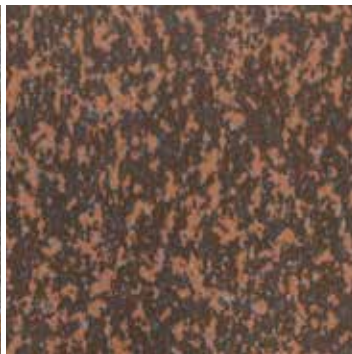
Aged Copper®



Copper Patina®



Blackened Copper®



Speckled Blackened Copper®



Black Copper Matte®



†Streaked Blackened Copper®



Speckled Blue Copper®



Weathered Metallic®



Copper Penny†

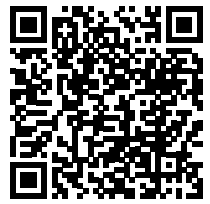
PLEASE NOTE: †7/8" Corrugated Only
 †This material is batch sensitive and directional. Do not mix batches or coil lots. Premium Colors. Slightly higher prices.
 Colors represented on this chart may not exactly match actual material. All colors should be verified using actual metal samples.





DESIGN TIP:

T-8 Plankwall® can be installed vertically or horizontally.



WOOD SERIES

Metal That Looks Like Wood

You don't have to stain, paint, or seal metal. Architects are now turning to alternative materials to replace real wood planks in their designs. As a result, we have developed a series of wood-inspired metal wall panels.





— WOOD SERIES:



Maple Wood



Rosewood



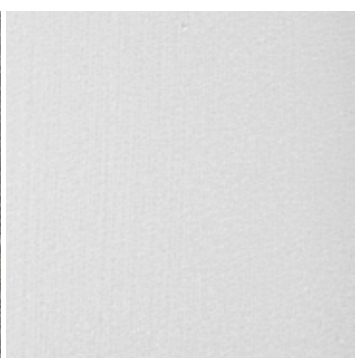
Walnut Wood



Gray Wood



Distressed Wood



White Wood



Aged Wood



Black Wood



Burnt Wood

PLEASE NOTE: | Colors represented on this chart may not exactly match actual material. All colors should be verified using actual metal samples.





DESIGN TIP:

If you are going for a neutral look, layer different hues of the same color. This color scheme allows accents, such as wood, brick, or stone, to make warm statements within any space.



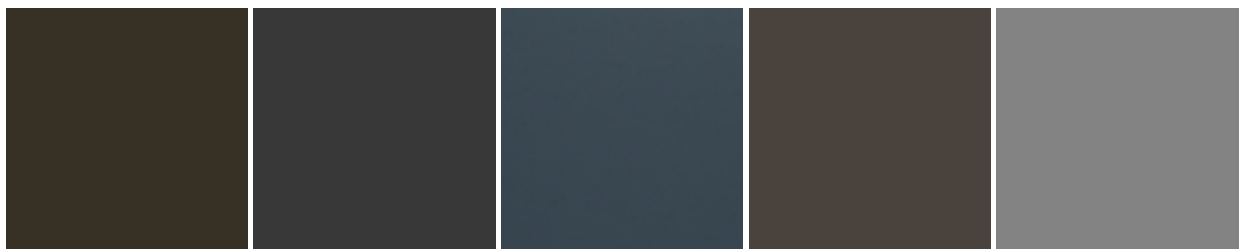
GRAY COLORS

The Neutral Choice

Gray is a popular color because it is a neutral shade that can be used in almost any design. Gray is a great choice for those who want to create a modern look, as it pairs well with both warm and cool tones. So, let your creative juices flow with the more than 20 different gray colors we have to offer!



— GRAY COLORS:



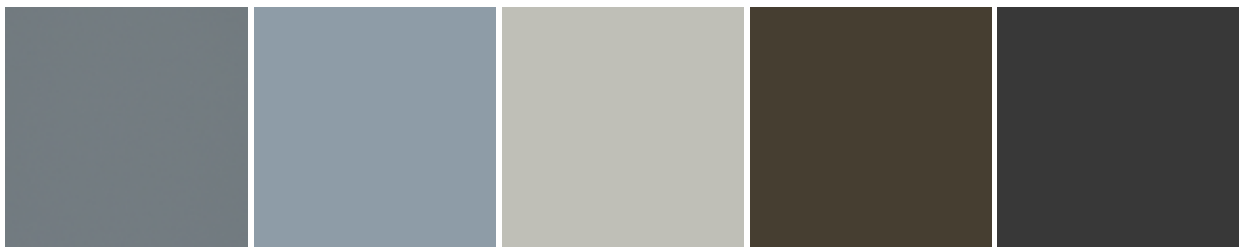
Burnished Slate

Charcoal Gray

Gun Metal Gray

Patina®

Slate Gray



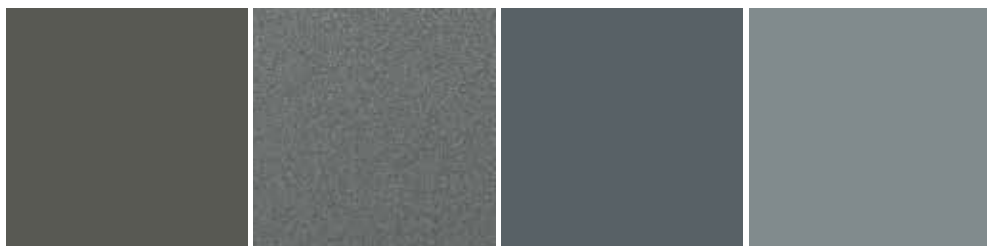
Dolphin Gray

Dove Gray

Ash Gray

Matte Burnished
Slate**

Matte Charcoal Gray



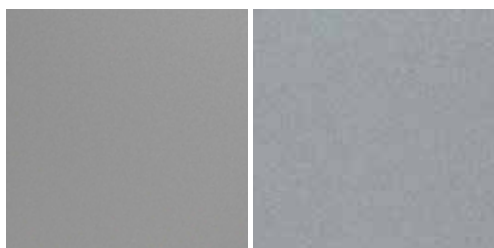
Matte Patina

Matte
Zinc Metallic®

Matte Musket
Gray

Matte Slate
Gray**

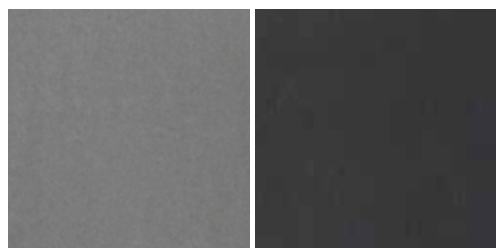
— PREMIUM COLORS - METALLIC FINISH:



Silver Metallic†

Zinc Metallic®†

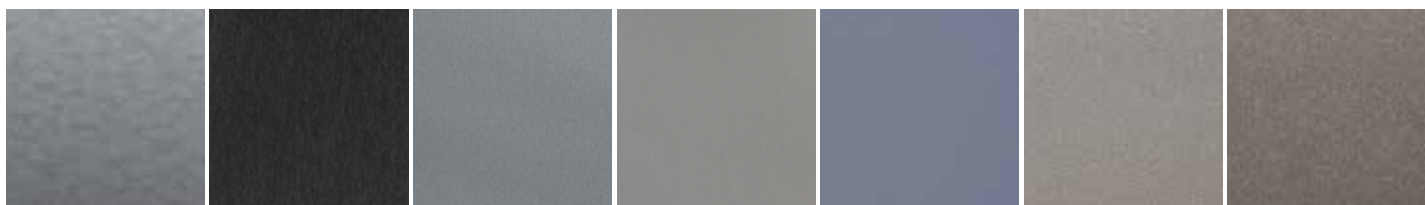
— ADDITIONAL FINISHES:



Bonderized*

Black Phosphate**

— SPECIALTY PAINT PRINTS:



Vintage®

Black Zinc
Matte®

Gray Zinc Matte®

Silver Zinc
Matte®

Blue Zinc Matte®

Bonder-Paint®
Light

Bonder-Paint®
Dark

PLEASE NOTE:

[†]This material is batch sensitive and directional. Do not mix batches or coil lots. Premium Colors. Slightly higher prices.

* Not A Paint Finish | ^{††} 5000 sq. ft. min.

Colors represented on this chart may not exactly match actual material. All colors should be verified using actual metal samples.





DESIGN TIP:

Adding a black metal roof to your house provides contrast to the existing architecture and creates a bold and modern look.



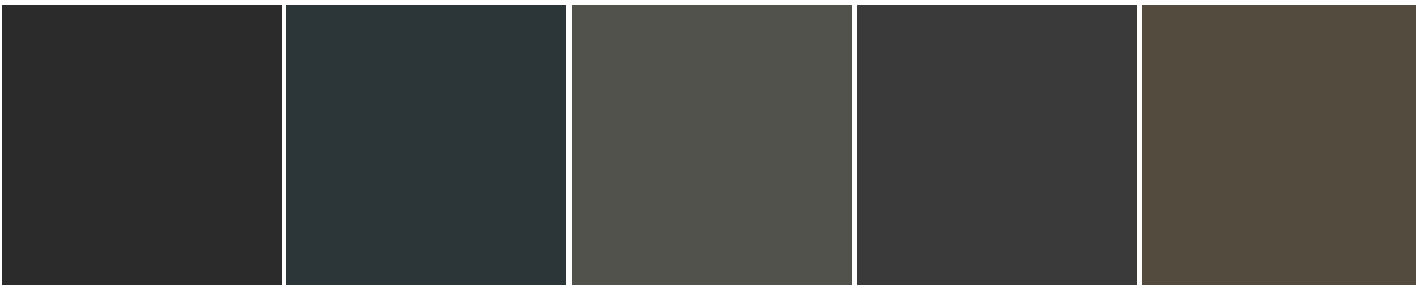
BLACK COLORS

The Perfect Contrast In Design

As one of the most popular metal roofing colors, black is unforgettable because it adds elegance and style to everything it touches. When the dark color is used on a metal roofing system, it creates a striking contrast to the architectural features of your house.



— BLACK COLORS:



Matte Black

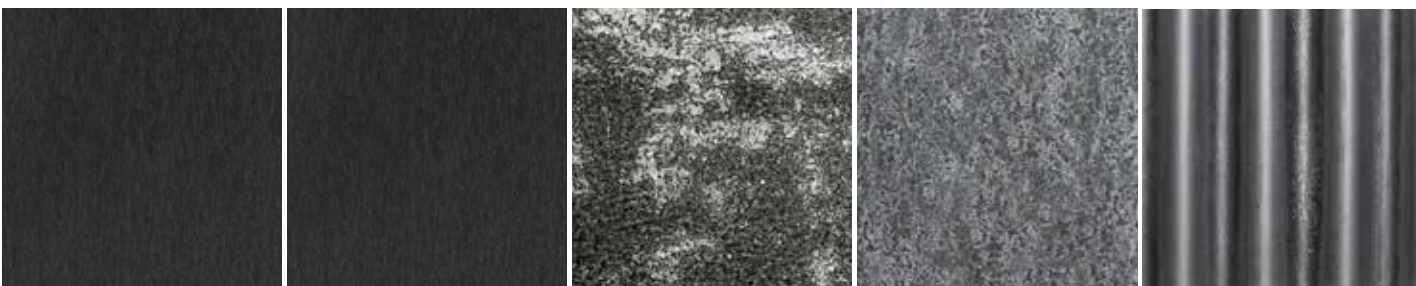
Matte Midnight Black

Dark Bronze

Matte Dark Bronze

Medium Bronze

— SPECIALTY PAINT PRINTS:



Black Ore Matte®

Black Zinc Matte®

Blackened Steel Matte®

Speckled Blackened Rust®

Streaked Blackened Rust®



Blackened Copper®

Vintage®

Burnt Wood®*

— ADDITIONAL FINISHES:



Black Phosphate® **

PLEASE NOTE: | *SMP Paint Finish | ** Not A Paint Finish
 Colors represented on this chart may not exactly match actual material. All colors should be verified using actual metal samples.





DESIGN TIP:

Corten® is a new steel that looks 100 years old. Just expose it to the weather and it will rust naturally.



ADDITIONAL FINISHES

The Natural Look Of Metal

Every project is different and sometimes calls for raw materials that are not painted. It all depends on the project and the materials that are needed to complete it.



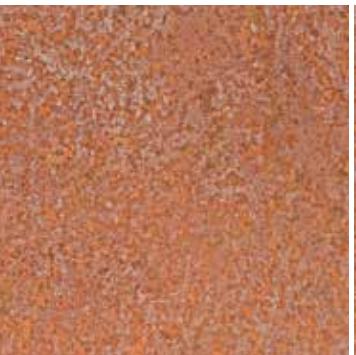
— ADDITIONAL FINISHES:



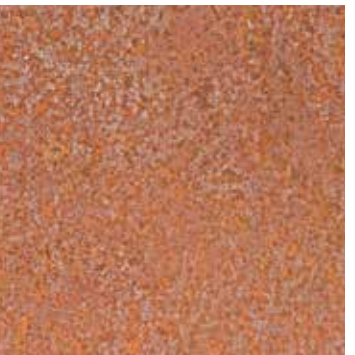
Galvalume®/Zincalume®



Galvanized G90



A606-4 (aka Corten®)*



Bare Cold Rolled Steel*



Bonderized



Black Phosphate®



Copper (16 oz / 20 oz)



Stainless Steel



Aluminum – Mill Finish

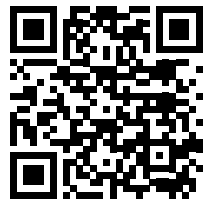


PLEASE NOTE: | ** Does Not Arrive Pre-Rusted
Colors represented on this chart may not exactly match actual material. All colors should be verified using actual metal samples.*



DESIGN TIP:

Use aluminum for projects that are located near the ocean.



ALUMINUM COLORS

Corrosion Resistance

Aluminum is perfect for coastal climates. The main benefit of aluminum roofing versus steel is its greater resistance to corrosion.

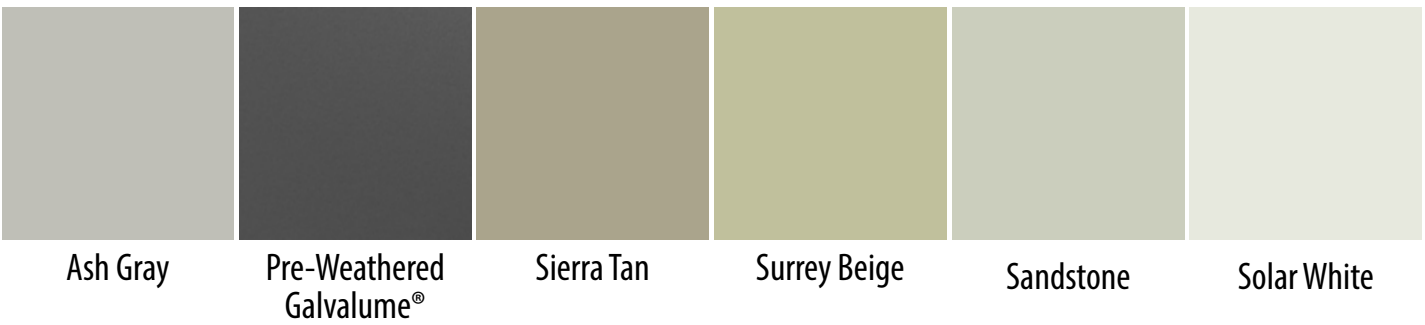


— ALUMINUM - STANDARD COLORS:

— SPECIALTY:



— ALUMINUM - SPECIAL ORDER COLORS (500 SQ. FT. MIN.):



PLEASE NOTE: †This material is batch sensitive and directional. Do not mix batches or coil lots. Premium Colors. Slightly higher prices. Colors represented on this chart may not exactly match actual material. All colors should be verified using actual metal samples.





DESIGN TIP:

Use perforated metal to create a more intricate design on your next project.



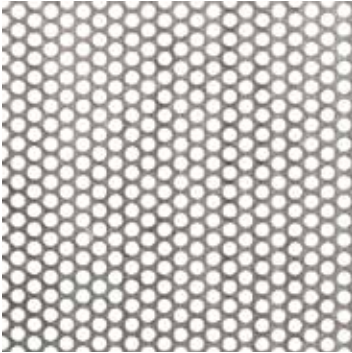
PERFORATED METAL

Translucent Screening

Perfect for wall and equipment screening.



— PERFORATED STOCK PATTERNS / FINISHES:



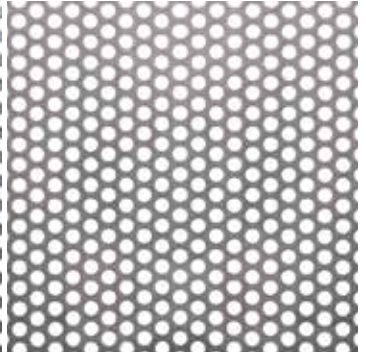
Galvalume® / Zincalume®
24 GA / 20 GA
PERFORATED PATTERN
- .127 Round & 7/32" Stagger
- 30.58% Open Area®



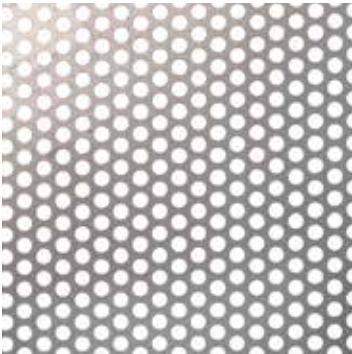
Regal White PVDF
24 GA / 20 GA
PERFORATED PATTERN
- .127 Round & 7/32" Stagger
- 30.58% Open Area



A606-4 (aka Corten®)*
22 GA / 20 GA
PERFORATED PATTERN
- .127 Round & 7/32" Stagger
- 30.58% Open Area



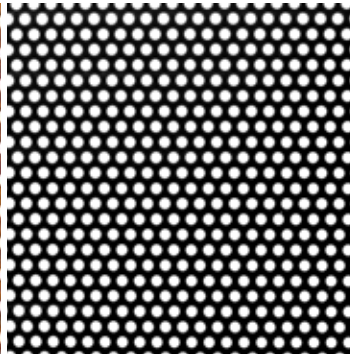
A606-4 (aka Corten®)*
16 GA
PERFORATED PATTERN
- .191 Round & .297 Stagger
- 37.56% Open Area



A606-4 (aka Corten®)*
11 GA
PERFORATED PATTERN
- .250 Round & .375 Stagger
- 40.31% Open Area



Corten AZP Raw®
24 GA
PERFORATED PATTERN
- .127 Round & 7/32" Stagger
- 30.58% Open Area



Perforated Matte Black
24 GA / 20 GA
PERFORATED PATTERN
- .127 Round & 7/32" Stagger
- 30.58% Open Area

PLEASE NOTE:

Custom finishes, gauges, and perforation patterns are available. Request for quote

**Does Not Arrive Pre-Rusted*

Colors represented on this chart may not exactly match actual material. All colors should be verified using actual metal samples.



SOLAR REFLECTIVITY INDEX

PVDF - Standard Colors	Cool Ratings		
Color Name	Reflect	Emiss	SRI
Almond	64.3%	0.87	77
Ash Gray	49.9%	0.86	57
Bone White	70.9%	0.86	86
Burnished Slate	29.1%	0.87	29
Champagne†	45.3%	0.84	50
Charcoal Gray	28.1%	0.87	28
Classic Green	21.4%	0.86	19
Colonial Red	31.8%	0.87	33
Copper Penny†	46.0%	0.86	52
Dark Bronze	27.3%	0.86	27
Desert Tan	48.4%	0.87	55
Dolphin Gray	43.0%	0.87	48
Dove Gray	48.9%	0.84	55
Gun Metal Gray	25.0%	0.88	26
Mansard Brown	28.3%	0.87	28
Matte Midnight Black	21.7%	0.86	19
Matte Black	4.1%	0.85	2
Medium Bronze	31.3%	0.86	32
Regal Blue	25.3%	0.84	23
Regal Red	41.0%	0.85	44
Regal White	70.4%	0.86	86
Royal Blue	26.0%	0.87	25
Sandstone	59.6%	0.86	70
Silver Metallic†	55.8%	0.85	44
Slate Blue	31.2%	0.87	32
Slate Gray	39.1%	0.87	43
Terra Cotta	39.7%	0.86	43
Zinc Metallic®†	32.9%	0.86	34

Matte Finishes	Cool Ratings		
Color Name	Reflect	Emiss	SRI
Matte Black	4.1%	0.85	2
Matte Burnished Slate	27.8%	0.87	28
Matte Charcoal Gray	26.8%	0.87	26
Matte Classic Green	20.7%	0.87	18
Matte Colonial Red	34.1%	0.87	36
Matte Dark Bronze	25.9%	0.87	25
Matte Desert Tan	46.5%	0.87	53
Matte Mansard Brown	27.5%	0.87	27
Matte Medium Bronze	31.1%	0.87	32
Matte Midnight Black	21.7%	0.86	19
Matte Musket Gray	32.2%	0.87	33
Matte Orange	38.8%	0.87	42
Matte Patina	29.9%	0.87	30
Matte Regal White	68.9%	0.86	83
Matte Sandstone	57.3%	0.87	67
Matte Slate Gray	37.7%	0.87	41
Matte Zinc Metallic®	25.9%	0.82	23

SMP - STANDARD COLORS	Cool Ratings		
Color Name	Reflect	Emiss	SRI
Antique Rustic®	30.0%	0.84	29
Country Red	35.0%	0.85	36
Desert Beige	48.0%	0.85	50
Emerald Green	28.0%	0.85	27
Koko Brown	31.0%	0.85	31
Light Gray	48.0%	0.85	54
Light Stone	58.0%	0.85	68
Polar White	57.0%	0.85	66
Sahara Tan	53.0%	0.85	61
Steel Gray	27.0%	0.84	25

PVDF - Special Order (500 Sq. Ft. Min)	Cool Ratings		
Color Name	Reflect	Emiss	SRI
Aged Patina	47.0%	0.85	53
Burgundy	25.0%	0.85	23
Evergreen	27.0%	0.86	26
Hartford Green	26.0%	0.85	24
Hemlock Green	29.0%	0.86	29
Pre-Weathered Galvalume®	30.0%	0.79	27
Sage Green	47.0%	0.85	53
Sierra Tan	35.0%	0.86	37
Solar White	68.0%	0.85	82
Stone White	60.0%	0.86	71
Surrey Beige	42.0%	0.85	46

Black Colors	Cool Ratings		
Color Name	Reflect	Emiss	SRI
Black Ore Matte®	28.8%	0.90	31
Black Phosphate®	N/A	N/A	N/A
Black Zinc Matte®	6.0%	0.91	2
Blackened Copper®	31.0%	0.77	34
Blackened Steel Matte®	30.0%	0.84	30
Burnt Wood®	4.9%	0.90	20
Dark Bronze	27.3%	0.86	27
Matte Black	4.1%	0.85	2
Matte Dark Bronze	25.9%	0.87	25
Matte Midnight Black	21.7%	0.86	19
Medium Bronze	31.3%	0.86	32
Speckled Blackened Rust®	33.0%	0.86	34
Streaked Blackened Rust®	31.0%	0.86	31
Vintage®	30.0%	0.70	22

Wood Series	Cool Ratings		
Color Name	Reflect	Emiss	SRI
Aged Wood	30.0%	0.86	30
Black Wood	6.0%	0.92	2
Burnt Wood	4.9%	0.90	20
Distressed Wood	25.0%	0.89	25
Gray Wood	40.0%	0.87	44
Maple Wood	57.0%	0.89	68
Rosewood	25.0%	0.91	26
Walnut Wood	17.0%	0.90	15
White Wood	0.65%	0.86	78



Copper Colors	Cool Ratings		
Color Name	Reflect	Emiss	SRI
Aged Copper®	43.9%	0.88	50
Black Copper Matte®	24.0%	0.88	23
Blackened Copper®	31.0%	0.77	34
Copper Patina®	37.0%	0.85	39
Copper Penny†	46.0%	0.86	52
Green Copper®	33.0%	0.87	35
Speckled Blackened Copper®	14.0%	0.87	10
Speckled Blue Copper®	38.0%	0.87	41
Speckled Copper®	37.0%	0.88	40
Streaked Blackened Copper®	18.0%	0.88	15
Streaked Copper®	36.0%	0.88	39
Weathered Metallic®	16.0%	0.85	12

Gray Colors	Cool Ratings		
Color Name	Reflect	Emiss	SRI
Ash Gray	49.9%	0.86	57
Black Phosphate®	N/A	N/A	N/A
Black Zinc Matte®	6.0%	0.91	2
Blue Zinc Matte®	33.0%	0.89	35
Bonderized	N/A	N/A	N/A
Bonder-Paint Dark	34.0%	0.92	38
Bonder-Paint Light	39.0%	0.89	43
Burnished Slate	29.1%	0.87	29
Charcoal Gray	28.1%	0.87	28
Dolphin Gray	43.0%	0.87	48
Dove Gray	48.9%	0.84	55
Gray Zinc Matte®	34.0%	0.87	32
Gun Metal Gray	25.0%	0.88	26
Matte Burnished Slate	27.8%	0.87	28
Matte Charcoal Gray	26.8%	0.87	26
Matte Musket Gray	32.2%	0.87	33
Matte Patina	29.9%	0.87	30
Matte Slate Gray	37.7%	0.87	41
Matte Zinc Metallic®	25.9%	0.82	23
Patina	32.1%	0.87	33
Silver Metallic†	55.8%	0.85	44
Silver Zinc Matte®	37.0%	0.91	41
Slate Gray	39.1%	0.87	43
Vintage®	30.0%	0.70	22
Zinc Metallic†	32.9%	0.86	34

Rusted Colors	Cool Ratings		
Color Name	Reflect	Emiss	SRI
Antique Rustic®	30.0%	0.84	29
Blackened Copper®	31.0%	0.77	34
Corten AZP Raw®	32.0%	0.89	34
Fresh Rust®	32.0%	0.89	34
Iron Rust®	32.0%	0.85	33
Reclaimed Metal Rust®	47.0%	0.89	54
Rustic Rawhide®	31.0%	0.88	32
Speckled Blackened Copper®	14.0%	0.87	10
Speckled Galvanized Rust®	41.0%	0.88	46
Speckled Rust®	35.0%	0.86	37
Streaked Galvanized Rust®	40.0%	0.88	44
Streaked Rust®	36.0%	0.86	38
Weathered Metallic®	16.0%	0.85	12
Weathered Rustic®	13.0%	0.85	8

Additional Finishes	Cool Ratings		
Color Name	Reflect	Emiss	SRI
A606-4 (aka Corten)	N/A	N/A	N/A
Aluminum - Mill Finish	N/A	N/A	N/A
Bare Cold Rolled Steel	N/A	N/A	N/A
Black Phosphate®	N/A	N/A	N/A
Bonderized	N/A	N/A	N/A
Copper	N/A	N/A	N/A
Galvalume®/Zincalume®	68.0%	0.30	65
Galvanized G90	N/A	N/A	N/A
Stainless Steel	N/A	N/A	N/A

Aluminum Colors (PVDF)	Cool Ratings		
Color Name	Reflect	Emiss	SRI
Almond	64.3%	0.87	77
Charcoal Gray	28.1%	0.87	28
Dark Bronze	27.3%	0.86	27
Fresh Rust®	32.0%	0.89	34
Matte Black	4.1%	0.85	2
Mill Finish	N/A	N/A	N/A
Regal White	70.4%	0.86	86

Aluminum Colors (Special Order) (Minimums Apply)	Cool Ratings		
Color Name	Reflect	Emiss	SRI
Aged Patina	47.0%	0.85	53
Ash Gray	39.0%	0.84	41
Colonial Red	30.0%	0.85	30
Copper Metallic†	49.0%	0.86	56
Dove Gray	49.0%	0.86	56
Evergreen	27.0%	0.86	26
Hartford Green	26.0%	0.85	24
Mansard Brown	27.0%	0.86	26
Medium Bronze	30.0%	0.87	31
Pre-Weathered Galvalume®	30.0%	0.79	27
Regal Blue	26.0%	0.85	24
Regal Red	42.0%	0.83	45
Sandstone	54.0%	0.86	63
Sierra Tan	35.0%	0.86	37
Silver Metallic†	59.0%	0.79	67
Slate Blue	29.0%	0.85	28
Slate Gray	33.0%	0.84	33
Solar White	68.0%	0.85	82
Stone White	60.0%	0.86	71
Surrey Beige	42.0%	0.85	46
Terra Cotta	35.0%	0.86	37

Aluminum Colors (Specialty Print)	Cool Ratings		
Color Name	Reflect	Emiss	SRI
Fresh Rust®	32.0%	0.89	34

Perforated Metal	Cool Ratings		
Color Name	Reflect	Emiss	SRI
A606-4 (aka Corten) 22 GA/20 GA	N/A	N/A	N/A
A606-4 (aka Corten) 16 GA	N/A	N/A	N/A
A606-4 (aka Corten) 11 GA	N/A	N/A	N/A
Corten AZP Raw®	N/A	N/A	N/A
Galvalume®/Zincalume®	N/A	N/A	N/A
Perforated Matte Black	N/A	N/A	N/A
Regal White PVDF	N/A	N/A	N/A



COIL AVAILABILITY CHART

COILS / FLAT SHEETS

STANDARD COLORS - PVDF PAINT FINISH

COOL TECH® 500 Color Name	COIL WIDTH				FLAT SHEETS 48"
	20"	22"	24"	48"	
Almond	●	●	●	●	●
Ash Gray	●	●	●	●	●
Bone White	●	●	●	●	●
Burnished Slate	●	●	●	●	●
Champagne	●	●	●	●	●
Charcoal Gray	●◆	●◆	●◆	●◆	●◆
Classic Green	●	●	●	●	●
Colonial Red	●	●	●	●	●
Copper Penny	●	●	●	●	●
Dark Bronze	●◆	●◆	●◆	●◆	●◆
Desert Tan	●	●	●	●	●
Dolphin Gray	●	●	●	●	●
Dove Gray	●	●	●	●	●
Gun Metal Gray	●	●	●	●	●
Mansard Brown	●	●	●	●	●
Matte Black	●◆	●◆	●◆	●◆	●◆
Medium Bronze	●	●	●	●	●
Patina®	●	●	●	●	●
Regal Blue	●	●	●	●	●
Regal Red	●	●	●	●	●
Regal White	●◆■	●◆■	●◆■	●◆■ ★▲	●◆■ ★▲
Royal Blue	●	●	●	●	●
Sandstone	●	●	●	●	●
Silver Metallic	●	●	●	●	●
Slate Blue	●	●	●	●	●
Slate Gray	●	●	●	●	●
Terra Cotta	●	●	●	●	●
Zinc Metallic®	●	●	●	●	●

LEGEND KEYS (Standard PVDF Colors)

●	24 Gauge - In Stock, Grade 50
◆	22 Gauge - In Stock, Grade 50
■	20 Gauge - In Stock, Grade 50
★	24 Gauge - In Stock, Grade 50 (Perforated)
▲	20 Gauge - In Stock, Grade 50 (Perforated)

MATTE COLORS - PVDF PAINT FINISH

COOL TECH® 500 Color Name	COIL WIDTH				FLAT SHEETS 48"
	20"	22"	24"	48"	
Matte Black	●◆	●◆	●◆	●◆	●◆
Matte Burnished Slate	★	★	★	★	★
Matte Charcoal Gray	●	●	●	●	●
Matte Classic Green	★	★	★	★	★
Matte Colonial Red	★	★	★	★	★
Matte Dark Bronze	●	●	●	●	●
Matte Desert Tan	★	★	★	★	★
Matte Mansard Brown	★	★	★	★	★
Matte Medium Bronze	●	●	●	●	●
Matte Midnight Black	●◆	●◆	●◆	●◆	●◆
Matte Musket Gray	●	●	●	●	●
Matte Orange	●	●	●	●	●
Matte Patina	●	●	●	●	●
Matte Regal White	★	★	★	★	★
Matte Sandstone	★	★	★	★	★
Matte Slate Gray	★	★	★	★	★
Matte Zinc Metallic®	●	●	●	●	●

LEGEND KEYS (Matte Colors)

●	24 Gauge - In Stock, Grade 50
◆	22 Gauge - In Stock, Grade 50
★	24 Gauge - Special Order Only, Grade 50, Minimums Apply

WOOD SERIES - SPECIALTY PAINT PRINTS

COOL TECH® 500 Color Name	COIL WIDTH Inquire	FLAT SHEETS 48"
Black Wood	Inquire	●
Burnt Wood	Inquire	●
Distressed Wood	Inquire	●
Gray Wood	Inquire	●
Maple Wood	Inquire	●
Rosewood	Inquire	●
Walnut Wood	Inquire	●
White Wood	Inquire	●

LEGEND KEYS (Wood Series - Specialty Paint Prints)

●	24 Gauge - In Stock, Grade 50
N/A	Not Available



Custom widths and lengths are available upon request.

All information stated in the color chart is correct at time of printing and subject to change without notice. Check our website for latest version. 09/2024.

SPECIALTY PAINT PRINTS - PVDF PAINT FINISH

COOL TECH® 500 Color Name	COIL WIDTH					FLAT SHEETS	
	20"	22"	24"	36"	48"	48"	36"
Aged Copper®	●	●	●	N/A	●	●	N/A
Black Copper Matte®	●	●	●	N/A	●	●	N/A
Black Ore Matte®	●	●	●	●	N/A	N/A	●
Black Zinc Matte®	●	●	◆	N/A	◆	◆	N/A
Blackened Copper®	●	●	●	●	N/A	N/A	●
Blackened Steel Matte®	●	●	●	●	N/A	N/A	●
Blue Zinc Matte®	●	●	●	●	N/A	N/A	N/A
Bonder-Paint Dark®	●	●	●	N/A	●	●	N/A
Bonder-Paint Light®	●	●	●	N/A	●	●	N/A
Copper Patina®	●	●	●	●	N/A	N/A	●
Corten AZP Raw®	◆	◆	◆	N/A	★	★	N/A
Fresh Rust®	●	●	●	N/A	●	●	N/A
Galv-Ten Robust®	●	●	●	N/A	●	●	N/A
Gray Zinc Matte®	●	●	●	●	N/A	N/A	●
Green Copper®	●	●	●	N/A	●	●	N/A
Reclaimed Metal Rust®	●	●	●	N/A	●	●	N/A
Rustic Rawhide®	●	●	●	N/A	●	●	N/A
Silver Zinc Matte®	●	●	●	●	N/A	N/A	N/A
Speckled Blackened Copper®	●	●	●	N/A	●	●	N/A
Speckled Blackened Rust®	●	●	●	N/A	●	●	N/A
Speckled Blue Copper®	●	●	●	N/A	●	●	N/A
Speckled Copper®	●	●	●	N/A	●	●	N/A
Speckled Galvanized Rust®	●	●	●	N/A	●	●	N/A
Speckled Rust®	●	●	●	N/A	●	●	N/A
Vintage®	●	●	●	N/A	●	●	N/A
Weathered Metallic®	●	●	●	●	N/A	N/A	●
Weathered Rustic®	●	●	●	●	N/A	N/A	●
VARI-Cool® Kaleidoscope®	●	●	●	N/A	●	●	N/A
VARI-Cool® Mesa Sunrise®	●	●	●	N/A	●	●	N/A
Zinc Patina®	●	●	●	N/A	●	●	N/A

LEGEND KEYS (Specialty Paint Prints - PVDF)

●	24 Gauge - In Stock, Grade 50
◆	22 Gauge - In Stock, Grade 50
★	24 Gauge - In Stock, Grade 50 (Perforated)
N/A	Not Available

SPECIAL ORDER COLORS - PVDF PAINT FINISH - MINIMUMS APPLY

COOL TECH® 500 Color Name	COIL WIDTH				FLAT SHEETS
	20"	22"	24"	48"	48"
Aged Patina	●	●	●	●	●
Burgundy	●	●	●	●	●
Evergreen	●	●	●	●	●
Hartford Green	●	●	●	●	●
Hemlock Green	●	●	●	●	●
Pre-Weathered Galvalume®	●	●	●	●	●
Sage Green	●	●	●	●	●
Sierra Tan	●	●	●	◆	◆
Solar White	●	●	●	●	●
Stone White	●	●	●	●	●
Surrey Beige	●	●	●	●	●

LEGEND KEYS (Special Order Colors - PVDF)

●	24 Gauge - Grade 50
◆	22 Gauge - Grade 50

SPECIALTY PAINT PRINTS - SMP PAINT FINISH

COOL TECH® 500 Color Name	COIL WIDTH		FLAT SHEETS	
	43"	48"	43"	48"
Antique Rustic®	▲	N/A	▲	N/A
Burnt Wood®	N/A	●	N/A	●
Iron Rust®	N/A	▲	N/A	▲

LEGEND KEYS (Specialty Paint Prints - SMP)

▲	26 Gauge - In Stock, Grade 80
●	24 Gauge - In Stock, Grade 50
N/A	Not Available



COIL AVAILABILITY CHART

COILS / FLAT SHEETS

ALUMINUM COLORS - PVDF PAINT FINISH						
COOL TECH® 500	COIL WIDTH				FLAT SHEETS	
	20"	22"	24"	48"	40.5"	48"
Aged Patina	★	★	★	★	★	★
Ash Gray	★	★	★	★◆	★	★◆
Charcoal Gray	▲	▲	▲	▲	▲	▲
Colonial Red	★	★	★	★◆	★	★◆
Copper Metallic	★	★	★	★	★	★
Dark Bronze	▲	▲	▲	▲	▲	▲
Dove Gray	★	★	★	★◆	★	★◆
Evergreen	★	★	★	★◆	★	★◆
Fresh Rust®	●	●	●	●	●	●
Hartford Green	N/A	N/A	N/A	★◆	N/A	★◆
Mansard Brown	★	★	★	★◆	★	★◆
Matte Black	▲	▲	▲	▲	▲	▲
Medium Bronze	★	★	★	★◆	★	★◆
Pre-Weathered Galvalume®	★	★	★	★	★	★
Regal Blue	★	★	N/A	N/A	★	N/A
Regal Red	N/A	N/A	N/A	★	N/A	★
Regal White	▲	▲	▲	▲	▲	▲
Sandstone	★	★	★	★◆	★	★◆
Sierra Tan	●	●	●	●◆	●	●◆
Silver Metallic	★	★	★	★◆	★	★◆
Slate Blue	★	★	N/A	N/A	★	N/A
Slate Gray	★	★	★	★◆	★	★◆
Solar White	★	★	★	★◆	★	★◆
Stone White	★	★	★	★◆	★	★◆
Surrey Beige	★	★	★	★	★	★
Terra Cotta	★	★	★	★◆	★	★◆

LEGEND KEYS (Aluminum Colors - PVDF)	
●	.032 - In Stock
▲	.040 - In Stock
★	.032 - Special Order
◆	.040 - Special Order
N/A	Not Available

STANDARD COLORS - SMP PAINT FINISH				
COOL TECH® 500	COIL WIDTH		FLAT SHEETS	
	43"	46"	43"	46"
Country Red	▲	▲●	▲	▲●
Desert Beige	▲	▲●	▲	▲●
Emerald Green	▲	▲●	▲	▲●
Koko Brown	▲	▲●	▲	▲●
Light Gray	▲	▲●	▲	▲●
Light Stone	▲	▲●	▲	▲●
Polar White	▲	▲●	▲	▲●
Sahara Tan	▲	▲●	▲	▲●
Steel Gray	▲	▲●	▲	▲●

LEGEND KEYS (Standard Colors - SMP)	
▲	26 Gauge - In Stock, Grade 80
●	24 Gauge - In Stock, Grade 50

ADDITIONAL FINISHES									
Finish Name	COIL WIDTH						FLAT SHEETS		
	20"	24"	36"	43"	46"	48"	36"	46"	48"
Bonderized	●	●	N/A	N/A	N/A	●	N/A	N/A	●
Bare Steel	▲●◆	▲●◆	N/A	N/A	N/A	▲●◆	N/A	N/A	▲●◆
Black Phosphate®	●	●	N/A	N/A	N/A	●	N/A	N/A	●
Copper	20 OZ, 16 OZ	20 OZ, 16 OZ	20 OZ, 16 OZ	N/A	N/A	N/A	20 OZ, 16 OZ	N/A	N/A
Galvalume®/Zincalume®	▲●◆■	▲●◆■	N/A	▲	▲●	●◆■	N/A	▲	●◆■
Galvalume®/Zincalume® (Perforated)	N/A	N/A	N/A	N/A	N/A	●■	N/A	N/A	●■
Galvanized G90	●	●■	N/A	N/A	N/A	▲●◆■	N/A	N/A	▲●◆■
Stainless Steel 304 2B Mill	N/A	●	N/A	N/A	N/A	●	N/A	N/A	●

LEGEND KEYS (Additional Finishes)			
▲	26 Gauge - In Stock, Grade 50 to Grade 80	■	20 Gauge - In Stock, Grade 50
●	24 Gauge - In Stock, Grade 50	N/A	Not Available
◆	22 Gauge - In Stock, Grade 50		

Custom widths and lengths are available upon request.

All information stated in the color chart is correct at time of printing and subject to change without notice. Check our website for latest version. 09/2024.





SHARKSKIN® ROOFING UNDERLAYMENT

Unparalleled Performance & Superior Moisture Protection

Synthetic roofing underlayment is vastly superior to felt underlayment. It's one of the most overlooked and important components of a metal roof system. At Western States Metal Roofing, we only sell Sharkskin® synthetic underlayment because we feel it's the best roofing underlayment on the market.

- Protect Your Home Or Building From Water Intrusion
- Up To 50 Year Warranty*
- 12 Months UV Exposure*
- Abrasion Resistant
- Slip Resistant
- ICC - ES Approved (ESR-1708)
- All Temperature Performance

**Varies by product*



SHARKSKIN ULTRA SA® is a "state of the art" high temp rated peel and stick synthetic roof underlayment. This underlayment was developed in 2006 and sticks in the cold – down to 10°F – without primer.

- 50 Year Limited Warranty
- 12 Months UV Resistance
- Self Adhesive



SHARKSKIN ULTRA® The original premium synthetic roof underlayment for asphalt, metal, slate and tile. It's made from the same materials as the Sharkskin Ultra underlayment, but it's non adhesive.

- 50 Year Limited Warranty
- 12 Months UV Resistance
- Non Adhesive



SHARKSKIN COMP® was designed to replace felt underlayment at an equal price point. You get a superior roofing underlayment, but it will not cost you more money. It can be used for metal roofing, but is used more often for asphalt shingles. It has a shorter warranty and we would recommend upgrading to Ultra synthetic underlayment if it will be used under metal.

- 30 Year Limited Warranty
- Up To 6 Months UV Resistance
- Self Adhesive



SHARKSKIN ULTRA RADIANT® is a high-performance roof underlayment that also acts as a radiant barrier for all metal, slate, tile and shingle roof installations.

- 50 Year Limited Warranty
- 12 Months UV Resistance
- Non Adhesive





Finishes You've Never Seen Before®

Phoenix, Arizona

(877) 787-5467

sales@westernstatesmetalroofing.com

Manufacturing Facility

901 W Watkins Rd

Phoenix, AZ 85007

Coil & Flats Division

2140 S. 7th Ave.

Phoenix, AZ 85007

Tucson, Arizona

(520) 574-4247

tucsonsales@westernstatesmetalroofing.com

Distribution Hub

4975 E. Drexel

Tucson, AZ 85706

Dallas/Fort Worth, Texas

(972) 843-4343

texas-sales@westernstatesmetalroofing.com

Manufacturing Facility

15023 County Road 545

Nevada, TX 75173

Spokane Valley, Washington

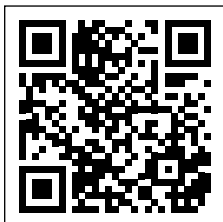
(509) 418-2833

washington-wsmr@westernstatesmetalroofing.com

Manufacturing Facility

3610 N. Barker Rd. STE C

Spokane Valley, WA 99027



For more information:

WESTERNSTATESMETALROOFING.COM



*Colors represented on this catalog may not exactly match actual material.
All colors should be verified using actual metal samples.*