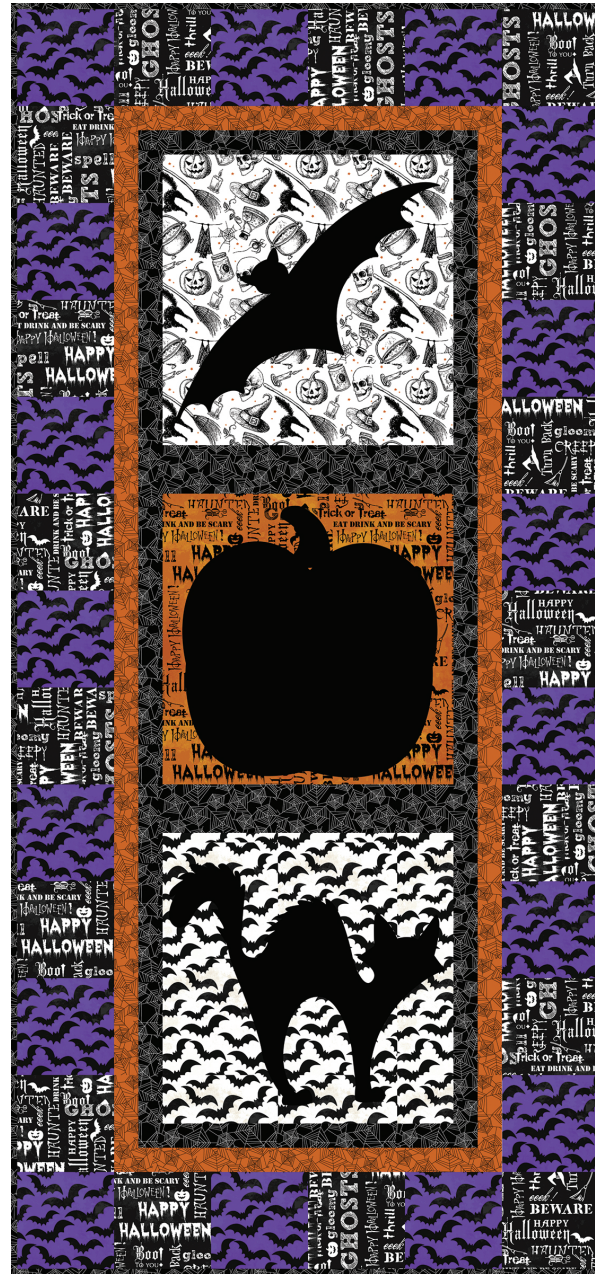


# Eat Drink and Be Scary - Wall Hanging

Designed by Heidi Pridemore of The Whimsical Workshop  
Featuring the Four Winds Collection by Whistler Studios  
Pattern by Heidi Pridemore  
Size: 24" x 52"



Check [www.windhamfabrics.com](http://www.windhamfabrics.com) Free Project section to see if there are any pattern updates before you start your quilt project



812 Jersey Ave – Jersey City, NJ 07310 – 201.659.0444 ~ FAX: 201.659.9719  
[www.windhamfabrics.com](http://www.windhamfabrics.com) email: [retail@windhamfabrics.com](mailto:retail@windhamfabrics.com)

# Eat Drink and Be Scary - Wall Hanging

Page 2

## Estimated Fabric Requirements:

½ yard – 35370S-2 Black

Fat Quarter – 42902-1 White

Fat Quarter – 42903-2 Orange

Fat Quarter – 42904-1 White

⅔ yard – 42905-4 Black

¼ yard – 42905-2 Orange

⅜ yard – 42904-3 Purple

⅜ yard – 42903-4 Black

1 ¾ yards – 42902-2 Orange



35370S-2 Black (A)



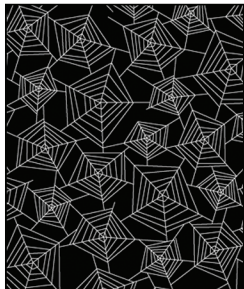
42902-1 White (B)



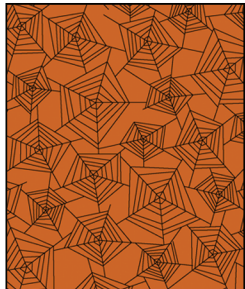
42903-2 Orange (C)



42904-1 White (D)



42905-4 Black (E)



42905-2 Orange (F)



42904-3 Purple (G)



42903-4 Black (H)



42902-2 Orange  
(Backing)



WINDHAM FABRICS

[www.windhamfabrics.com](http://www.windhamfabrics.com)

# Eat Drink and Be Scary - Wall Hanging

Page 3

## Cutting Instructions:

Fabric A: Black

- See instructions to cut one bat, one pumpkin and one cat.

Fabric B: Halloween Motifs – White

- Cut one 12 ½" square.

Fabric C: Words – Orange

- Cut one 12 ½" square.

Fabric D: Bats – White

- Cut one 12 ½" square.

Fabric E: Webs – Black

- Cut two 1 ½" x 40 ½" Width of Fabric (WOF) strips.
- Cut one 2 ½" x WOF strip. Sub-cut the strip into two 2 ½" x 12 ½" strips.
- Cut one 1 ½" x WOF strip. Sub-cut the strip into two 1 ½" x 14 ½" strips.
- Cut four 2 ½" x WOF strips for the binding.

Fabric F: Webs – Orange

- Cut two 1 ½" x 42 ½", piece as needed.
- Cut one 1 ½" x WOF strip. Sub-cut the strip into two 1 ½" x 16 ½" strips.

Fabric G: Bats – Purple

- Cut two 4 ½" x WOF strips. Sub-cut the strips into seventeen 4 ½" squares.

Fabric H: Words – Black

- Cut two 4 ½" x WOF strips. Sub-cut the strips into seventeen 4 ½" squares.

Backing: Halloween Motifs – Orange

- Cut one 32" x 60" strip for the back.



WINDHAM FABRICS

[www.windhamfabrics.com](http://www.windhamfabrics.com)

# Eat Drink and Be Scary - Wall Hanging

Page 4

## Block Assembly:

1. Following the manufacturer's instructions, trace the listed number of each template onto the paper side of the fusible web. Roughly cut out each template about 1/8" outside the drawn lines.
2. Press each template onto the wrong side of the fabrics as listed on the templates. Cut out each template on the drawn lines.
3. Refer to Figure 1 to arrange and press the Fabric A bat onto the 12 1/2" Fabric B square.
4. Finish the raw edges of each shape with a decorative stitch such as a buttonhole or satin stitch to make one Bat block.
5. Repeat Steps 3-4 using one Fabric A pumpkin and one 12 1/2" Fabric C square to make one Pumpkin block (Fig. 2).
6. Repeat Steps 3-4 using one Fabric A cat and one 12 1/2" Fabric D square to make one cat block (Fig. 3).

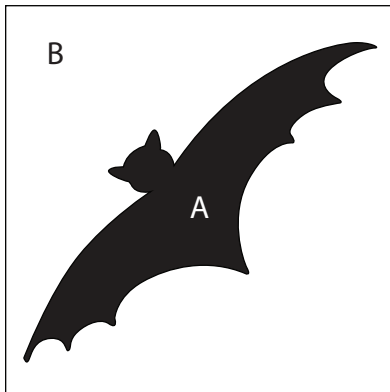


Fig. 1

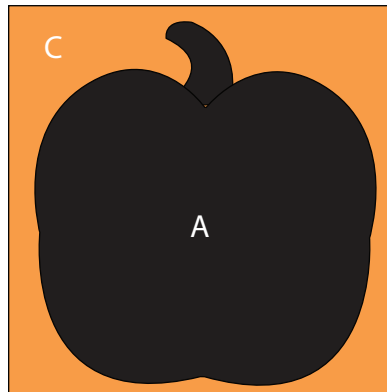


Fig. 2

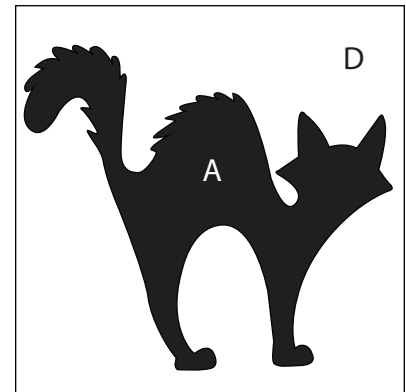


Fig. 3

## Quilt Assembly – Refer to the Quilt Layout while assembling the quilt top:

7. Sew one 2 1/2" x 12 1/2" Fabric E strip to the top and to the bottom of the pumpkin block. Sew one bat block to the top of the pumpkin block and one cat block to the bottom of the pumpkin block to make the Center Block.
8. Sew one 1 1/2" x 40 1/2" Fabric E strip to each side of the Center Block. Sew one 1 1/2" x 14 1/2" Fabric E strip to the top and to the bottom of the Center Block.
9. Sew one 1 1/2" x 42 1/2" Fabric F strip to each side of the Center Block. Sew one 1 1/2" x 16 1/2" Fabric F strip to the top and to the bottom of the Center Block.
10. Sew six 4 1/2" Fabric H squares and five 4 1/2" Fabric G squares together, alternating them. Sew this strip to the left side of the Center Block.



WINDHAM FABRICS

[www.windhamfabrics.com](http://www.windhamfabrics.com)

# Eat Drink and Be Scary - Wall Hanging

Page 5

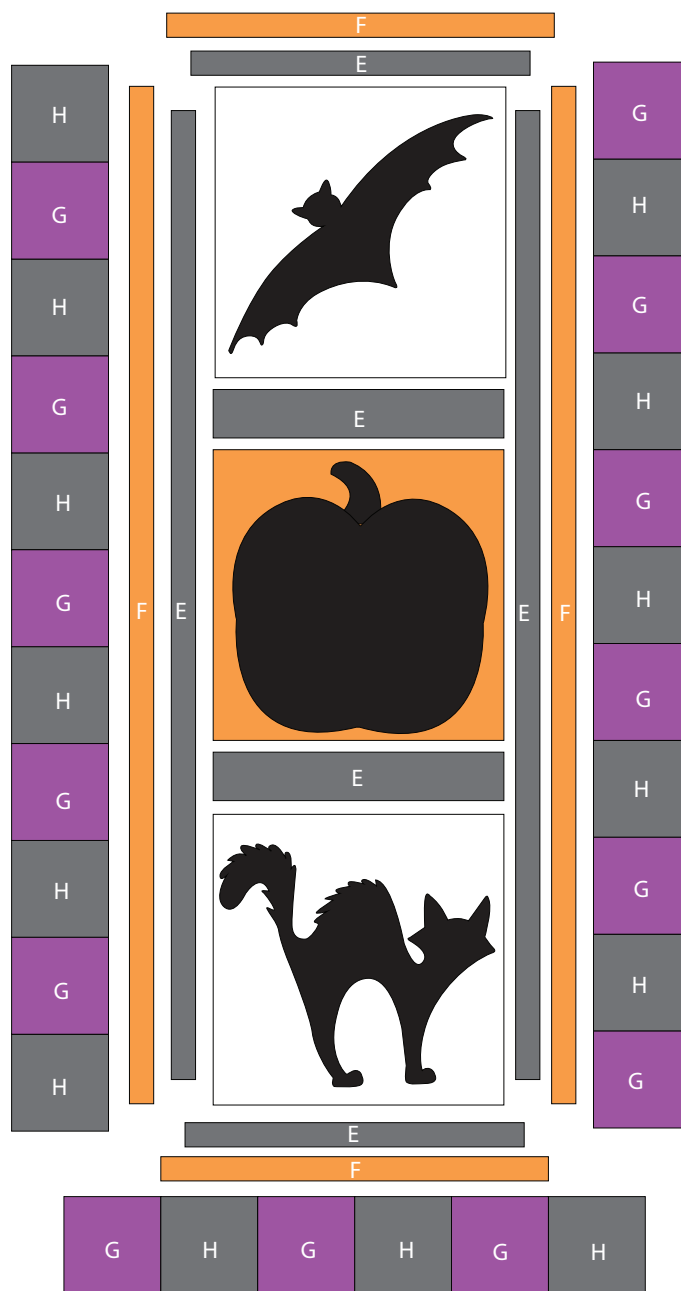
11. Sew six 4 1/2" Fabric G squares and five 4 1/2" Fabric H squares together, alternating them. Sew this strip to the right side of the Center Block.
12. Sew three 4 1/2" Fabric G squares and three 4 1/2" Fabric H squares together, alternating them. Repeat to make a second strip. Sew the strips to the top and to the bottom of the Center Block to make the quilt top.



13. Layer and quilt as desired.

14. Sew the four 2 1/2" x WOF Fabric E strips together, end to end with 45-degree seams, to make the binding. Fold this long strip in half, lengthwise with wrong sides together, and press.

15. Bind as desired.



Quilt Layout



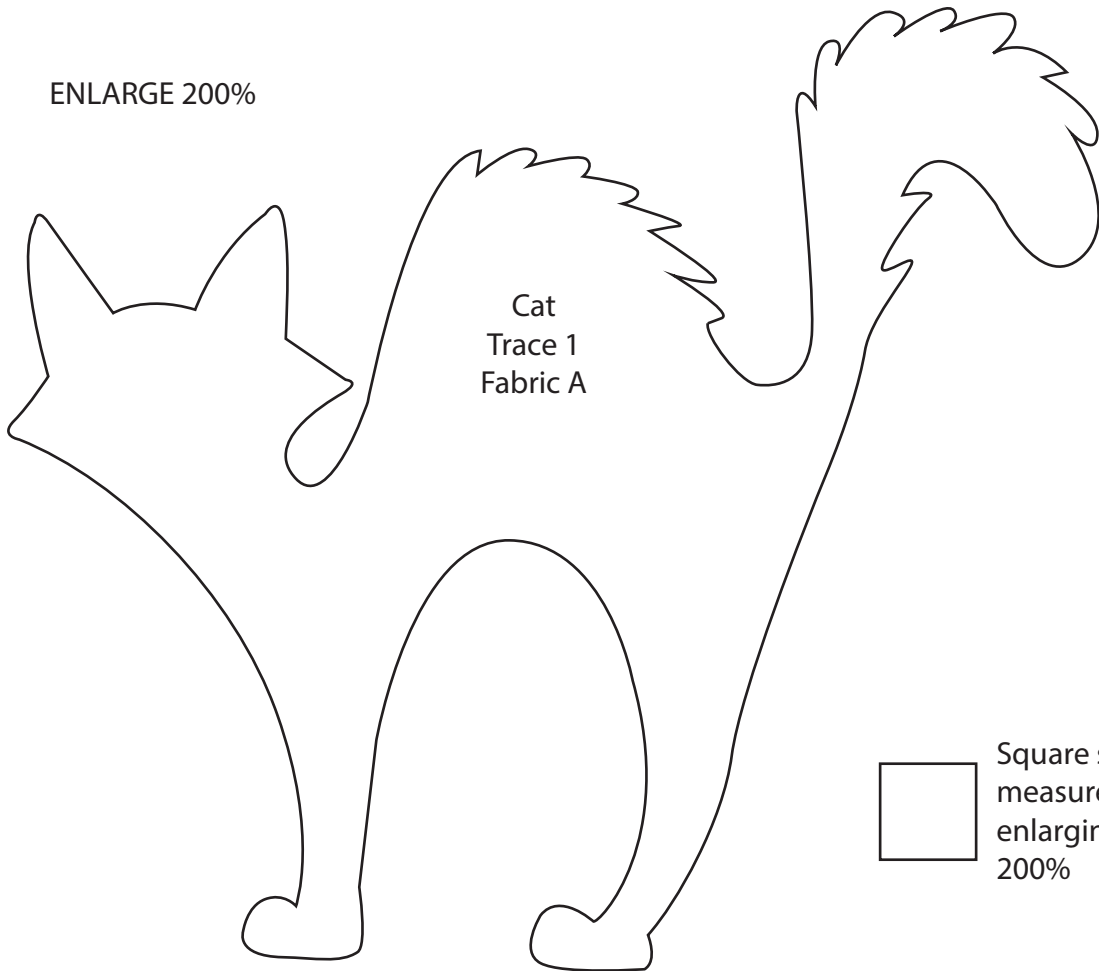
WINDHAM FABRICS

[www.windhamfabrics.com](http://www.windhamfabrics.com)

# Eat Drink and Be Scary - Wall Hanging

Page 6

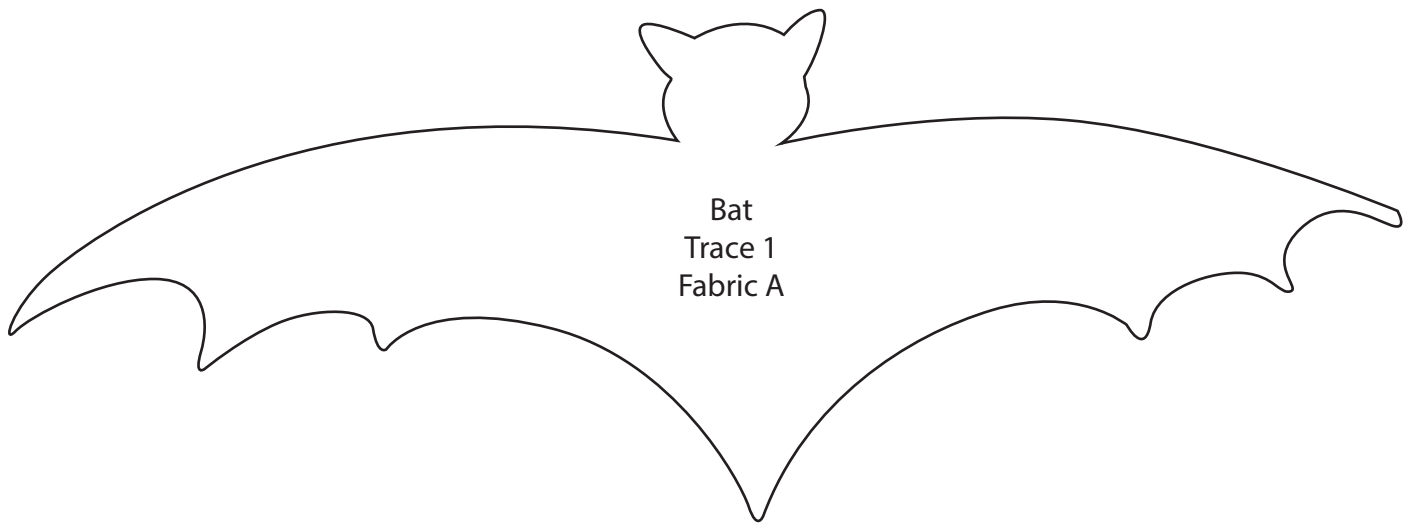
ENLARGE 200%



Cat  
Trace 1  
Fabric A



Square should  
measure 1" **AFTER**  
enlarging templates  
200%



Bat  
Trace 1  
Fabric A



WINDHAM FABRICS

[www.windhamfabrics.com](http://www.windhamfabrics.com)

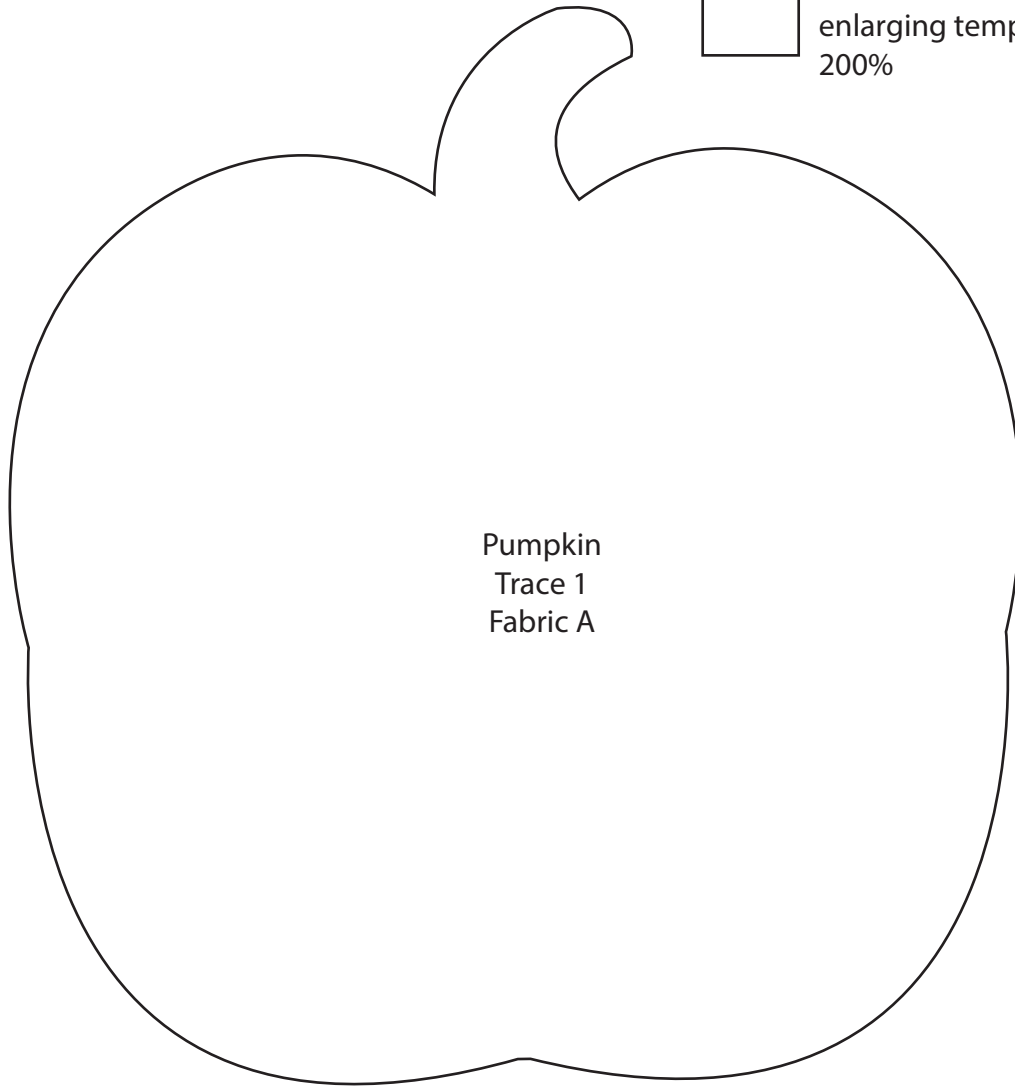
# Eat Drink and Be Scary - Wall Hanging

Page 7

ENLARGE 200%



Square should  
measure 1" **AFTER**  
enlarging templates  
200%



Pumpkin  
Trace 1  
Fabric A

**Be sure to visit [www.windhamfabrics.com](http://www.windhamfabrics.com) to see the complete collection  
and to download this and other FREE Projects**



**WINDHAM FABRICS**

[www.windhamfabrics.com](http://www.windhamfabrics.com)