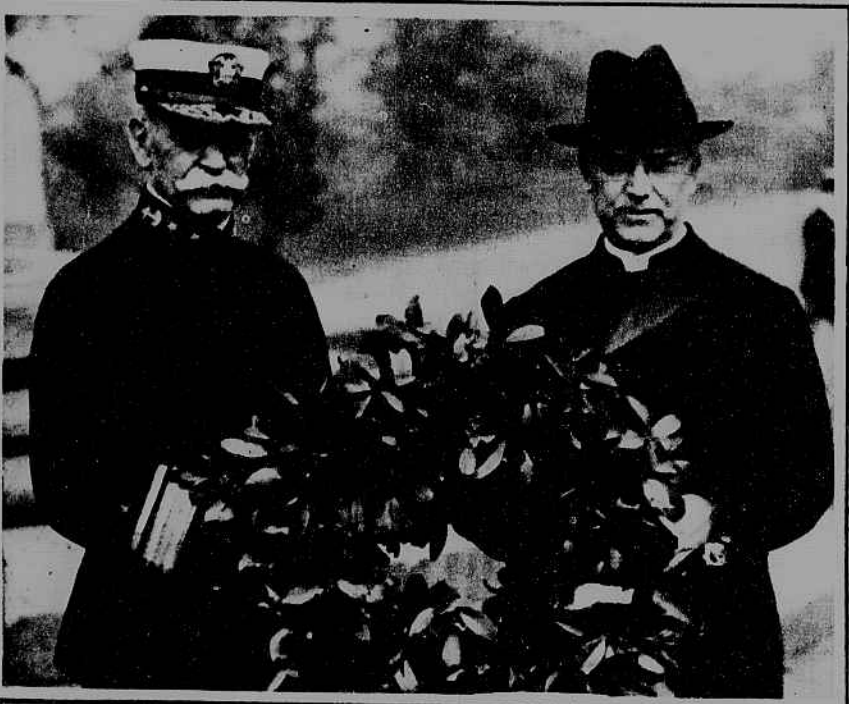




Left—The homecoming of Miss Edith Cavell, England's martyr-nurse. The casket, draped with the Union Jack, leaves Westminster Abbey after the memorial service, and, carried on a gun-carriage, is escorted by the Coldstream Guards through silent throngs in London streets on the way to its last resting place in Norwich. The flower bedecked casket was brought across the Channel on the deck of a British destroyer.  
*Paul Thompson*



Right—Veterans both—a fighter of '61 takes charge of a wounded young warrior from overseas on Decoration Day in Washington, and together they pay homage to the memorial monument of the older veteran's Civil War regiment.  
*Paul Thompson*



"Four Aces," all decorated, members of the 94th Pursuit Squadron, return home. More than ninety victories were won by this famous outfit, which numbers among its aces the late Maj. Raoul Lufbery and Capt. Rickenbacker. L. to R.—Capt. Sam Kaye, Lt. L. H. Dawson, Maj. R. M. Chambers, Capt. W. E. Palmer.  
*Paul Thompson*

Left—"Remember the Maine." The old Spanish War slogan was carried out Decoration Day, when Rear Admiral Sigsbee and Chaplain Chidwick, commander and chaplain of the old battleship, placed a wreath on the monument in Central Park commemorating the famous ship, sunk in Havana Harbor twenty-one years ago.  
*Western N. Y.*

Right—"Captain" Elsie Janis, decorated with the grateful affection of the A. E. F. from private to general, returns after more than a year overseas. Miss Janis gave several hundred performances, often "carrying on" under fire, and brought cheer to countless war-weary Yanks.  
*F. R.*



# HEARN

Fourteenth Street West of Fifth Avenue.

## Fashion Arrays for Summer at the Seashore, in the Mountains and in the Country

Even to be an onlooker at sports requires that the dress be in accord with the joyous spirit of the occasion. The mode in smart sports wear finds its newest expression in the distinction and charm of these suits and dresses covering those phases of fashion defined by dress at the great resorts and for country entertaining.

A Dress of navy blue Tricolette, embroidered in silk. 54.75	B. Suit of white silk Paulette bordered with brushed angora. This model also comes in colors. 64.00	C. Dress of beaded Crepe Georgette in French blue or pearl gray. 54.75	D. Dress of navy blue Serge with panel and reverse of gray broadcloth striped with black braid. 45.00	E. Suit of navy blue Satin with border of gray brushed angora. 49.50	F. Suit of taupe silk Paulette with surplice throw. 45.00	G. Dress of black Tricolette with embroidered overblouse. 42.50
---	---	--	---	--	---	---