

Battleship Maine To Be Dumped In Gulf Of Mexico



GEN. W. H. BLIXBY

WASHINGTON, D. C., Feb. 8.—When General W. H. Blixby, in charge of the work on the battleship Maine, arrived here last week, he brought with him the news that within a short time the last piece of wreckage of the old battleship Maine, blown up in Havana harbor, would be safely and finally dumped into the Gulf of Mexico. This is outstanding news to many people, who believed that the

battleship would be repaired, and again become a part of the American navy. The engineers in charge of the work, however, found that the battleship was so completely demolished and so completely ruined by the action of the waters since it has lain in Havana harbor, that no practical use could be made of it, and the steel and iron castings could not even be utilized as a by-product.

Therefore the course was determined upon, and within a short time the last piece of steel and framework will lie at the bottom of the Gulf of Mexico. The work of demolishing the Maine has been a complicated task, requiring much ingenuity. The castings and steel were cut in half-ton pieces and put aboard scows, and then towed out into the Gulf.

SELLS SPICES NO LICENSE

Agent Says His Principals Tell Him Not to Pay But City Says He Must

KEEPS SOME GOODS

"A steam roller" is all right for a presidential administration, but the city of Bisbee is making out splendidly with a "fine tooth comb," tank you. Having placed a tax on the agent of every concern that insures houses, lives, houses and reputations, and increasing the cost of buying a home on the coast for those who might want to leave Bisbee, by taxing outside agents, the city is now going after the smaller fish.

Last night one Joe Keist was cited to appear before the city council in order that the council might determine whether or not he should pay a tax for spices. Keist admitted that he was selling tea and spices for a tea concern whose headquarters are at Brooklyn, and which has other stores in various parts of the country, the nearest to Bisbee being at Pueblo, Colo. He said that he took orders from residents of Bisbee, once a month, and made deliveries of goods once a month. He admitted that when goods that had been ordered were not delivered, he kept these in stock at No. 130 Tombstone canyon and dispensed to those whose stock was depleted before the arrival of an order. On this admission the council "hooked" him, and advised him that he would have to pay a quarterly license of five dollars.

"My company has instructed me not to pay any license," Keist replied. He was advised that if he failed to pay the license and continued in business, the marshal would be instructed to arrest him, and Keist replied, "Well you will have to arrest me, that's all."

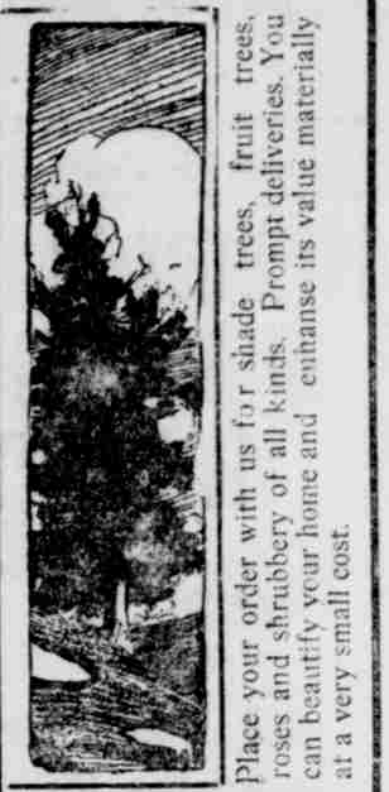
The National Democratic Conveution At Baltimore

The next stop after Baltimore is Washington. Perhaps there is something of capital significance in the selection of the Maryland city for the democratic convention. There is something rather satisfying in the thought of Baltimore in June for the time and place of naming the next president of the United States. At the gateway of the north and south the candidate who comes out from that historic town will be a striking appeal to a united country for commercial and industrial peace.

Mr. La Follette's progressiveness; Mr. Roosevelt's digressiveness; Mr. Cummins' radicalism and Mr. Taft's wanderings have sort of fumbled and cross-currented government affairs until neither merchant nor manufacturer capital nor labor, knows just what is expected of them in the way of government activity. Whichever of the republican possibilities finally recovers the nomination there will be enough of discord in his wake to shock even Chicago.

There is no republican candidacy that spells peace. The nomination of any of the candidates mentioned, particularly President Taft, the hero of Schedule K, indicates a greater turmoil.

Chicago must needs give us a stormy petrel. But out of Baltimore we expect something of the substan-



HOGAN & SEED
Real Estate, Fire & Life Insurance
K. L. & M. Bldg. — Phone 10

INTENTION TO INTERVENE IS DISCLAIMED

(Continued from Page 1.)

move troops through United States territory, to reach points in the interior at which rebels have severed railroad communication, was acted on today. Both the treasury and war departments were advised that a regiment of Mexican soldiers tomorrow would travel in southern Texas from Eagle Pass to El Paso, in an effort to reach Chihuahua, the vicinity of the storm center of rebel activity. General Wood, chief of staff, U. S. A., tonight said he had ordered a detail of American officers to accompany the Mexicans as an honorary escort. The arms of the Mexican troops will be shipped as a local consignment, but will be picked by the customs officials in accordance with orders of the treasury department.

The American government has twice before given permission to Mexico to transport troops through the United States, and today's request was acted upon as a matter of routine. It was suggested unofficially that the rebels, earlier reported to

IMPRISONED MINERS ARE SAFELY RELEASED

None of the Sixty-five Are Any the Worse for the Cave-in

AMADOR, Cal., Feb. 8.—The Bunker Hill mine yielded the richest return in its half century career, when sixty-five human lives were liberated shortly after noon today after an imprisonment of twenty-two hours, following a cave-in of the main shaft yesterday. One after another, the miners, who had been fed for twenty hours by food lowered down an air pipe by anxious hands above, and who had snatched bits of sleep with lodges of rock as pillows, clambered through the flimsy passageway, cleared of debris, back to the sunshine and to waiting relatives and friends.

BIGGER THINGS FOR DUKE

Report Says Tobacco Trust Head Will Lead International Organization

NEW YORK, Feb. 8.—It was stated today, apparently on good authority, that J. B. Duke will soon restore as president of the American Tobacco company and become head of the British-American Tobacco company, with headquarters in London. He is to be succeeded by Vice President F. S. Hill.

Y. W. C. A. NOTES

Tuesday evening February 13, the Young Women's Christian Association members will have an indoor picnic. The members are invited to come dressed as children, each bringing a small picnic basket. Some of the members are making special efforts to secure new members, and collect fees from those who are delinquent by February 12.

Every woman, member or not, who will give some special time to this work, is asked to do so Tuesday night. All who will do this are asked to get membership application blanks at the office.

The date for the opening of the playground is set for February 22. This playground is for Y. W. C. A. members, adults and girls.

The new secretary, Miss Carlota Moyer, will arrive from California next week. Miss Moyer has recently returned from Honolulu, where she served as general secretary of the Y. W. C. A. for five years. Previous to that, she was secretary at Sacramento, Cal., for two years.

Friday afternoon from 2:15 until four o'clock, Miss Jones will entertain, the high school girls being her guests.

NEVER FINISHED

The scholar should regard no school as a finishing school. One's education is never finished.



HIGH BUTTON BOOTS For Women

We Have Just Received A New Shipment Of Patent Leather and Gun Metal Button Boots A Pair \$4.00

This will be welcome news to a vast number of Bisbee women who have been anxiously awaiting the arrival of these shoes.

The result of the continued popularity of short skirts for Spring wear makes the High Button Boots prime favorites in footwear.

It has been next to impossible to supply the demand for these stylish shoes—the number of daily inquiries at the shoe department substantiates our belief that these will go out with a rush.

If you contemplate purchasing a pair of HIGH BUTTON BOOTS, you will act wisely if you make your selection today. At this writing we have plenty of all sizes in every width; Patent Leather and Gun Metal, 16-Button Boots at \$4.00 a pair, Black Suede and White Nu-Buck Button Boots at \$5.00 a pair.

The spirit of the master shoemakers finds its most graceful expression in these SHOES, in their striking beauty and individuality of design. Modestly priced, and will fully satisfy the woman of fashion.

Patent Leather and Gun Metal Button Boots \$4.00 A PAIR
White Nu-Buck and Black Suede Button Boots \$5.00 A PAIR

"The Pair"
FRANKENBERG BROS. & NEWMAN

New Spring Oxfords For Men And Women Now Displayed In Our Show Window

\$25,000 PRODUCTION PRESENTED AT ROYAL

Of interest to both fond parents and children alike, will be the big double bill production at the Royal Theatre tonight, under the caption of "The Kiddies' Christmas." This famous production was staged at the enormous cost of twenty-five thousand dollars. Live polar bears, reindeers, and other rare animals were used in the posing, together with fifty people, some of the best talent on the stage taking part. Five thrifty children in one family, all under the age of ten years decide that Santa Claus has not treated them right, in past Yuletide days and determine to set him right, by writing him a letter telling of their grievances, and suggesting that he is a little out of date, behind the times, etc., that he should dispose of his reindeers and procure an automobile, air ship, etc. A few days later they are informed by their parents (to whom he has sent a wireless) that Santa Claus is very wrathful at their criticism, and that he proposes to punish them. They decide on desperate measures, and are determined to hold "Santa" up, this they do, and after taking his pack from his back, he makes his escape, and to their consternation they only find in the "pack" a bundle of switches, whereupon they follow "Santa" up and ask forgiveness which is readily granted and they are made happy by receiving a beautiful supply of Christmas "goods."

An Episode of Early Mormon Days' tells of the Meadow Mountain Massacre, where 150 families of settlers were killed by Mormons under orders from Brigham Young. This historical episode is fresh in the minds of every school boy. The staging is good, "Love at the Crossroads" Part I concludes the program, and shows some interesting ocean scenes.

Taft Headquarters ARE TO OPEN AT ONCE

McKinley Will Manage the Campaign for His Renomination

WASHINGTON, Feb. 8.—Taft headquarters are to be opened here immediately. Representative W. D. McKinley, of Illinois, chairman of the republican congressional campaign committee will be in charge of the president's political interests from now to the Chicago convention. This announcement was made tonight.

Pressure of political work has become so great that Secretary Hill has found it almost unappreciable and the selection of McKinley is regarded as especially happy. In his capacity as chairman of the congressional committee he will have exceptional means of keeping in close touch with political affairs throughout the country.

Headquarters will be opened as soon as suitable quarters can be found and will probably be within easy hail of the White House.

Taft is confident.

That Taft personally is confident he will be renominated and reelected, is asserted by one of the callers at the White House today. The president is reported to have said he is confident he could defeat any man the democrats nominated. According to the caller, the president believed the business interests of the country will support him.

Oldest Celestial Map

The oldest map of the heavens, containing 1,460 stars, was made in China in 690 B. C., and is in the National Library at Paris.

SUBSCRIBE TO THE REVIEW

COPPER STOCKS ONLY FEATURE OF MARKET

Producers' Statement Is Better Than Hoped and Rally Follows

NEW YORK, Feb. 8.—Except for tobacco and the copper shares, the stock market was almost stationary today. Prices of a few active issues rose at the opening, but quickly fell back on bear selling.

Copper stocks were the strongest feature. Trading in these was influenced by the favorable monthly report of the Copper Producers Association. Amalgamated marketed up 2-3/4, American Smelting 1-5/8, and other coppers a point or more.

Tobacco stocks fluctuated for a time, owing to the announcement of the retirement of J. B. Duke from the presidency of the American company to become head of the British concern. American Tobacco broke ten points, Liggett and Meyers seven, and Lorillard six, but all rallied later in the day.

Reductions in the Bank of England's rate of discount from 4 to 3 1/2 per cent. have been predicted by bankers here, and it is stated that the rate of the Bank of Germany which is now five per cent, will probably be reduced Monday. Two more shipments of gold were reported today, and an additional two million was engaged for Paris, bringing to the present movement to eight million. For South America, a quarter of a million was obtained. Loss in gold is expected to play an important part in the week's bond settlement. On operations of the sub-treasury, the banks already have lost more than six millions. At the same time, receipts from the interior fell off and today one million was sent to San Francisco.

Bonds were well sustained. Total sales, par value, \$3,357,000. Government unchanged on call.

BALANCE CUT IN TWO DURING LAST MONTH

County Funds Are Greatly Reduced by Payments in January

TOMBSTONE, Feb. 8.—According to the report of County Treasurer Hicks which was filed with the Board of supervisors on Monday the receipts of the county for the month of January were \$29,520.82 while the disbursements were \$348,860.16. The balance in the treasury on the 1st of January was \$580,421.80. The balance on the 1st of February according to the report was \$252,993.47.

The largest item of the receipts during the month was the collection of licenses by the Sheriff's Office there was turned in \$1,070 for licenses collected in December, 1911 and \$2,315.00 for licenses collected during the month of January. The Recorder's office contributed \$26.05 for fees collected in December and \$862.00 for fees collected during the month of January. A check for the sum of \$1,258.19 was received from the territorial Auditor being Cochise county's apportionment from the money received from the Forest Reserve fee collector in the county. The Probate Court contributed \$223.80 for December fees and \$253.25 for January fees. The balance of the receipts was made up from cash fines remitted by the various Justices of the Peace in the county, rent from the United States for office use and for the support of U. S. prisoners, land leases and a few other minor items. The amount of territorial and county taxes collected during the month was \$8,651.42.

Territory Is Given Check

Of the disbursements \$168,654.13 was paid out on general county warrants; \$4,244 on salary warrants; \$2,265.78 on road warrants; \$13,987.36 in school warrants; while the territory received from the county its check for the sum of \$116,698.75 being its portion of the territorial and county taxes collected. The balance of the expenditures were high school and building fund warrants of the various school districts.

The balances in the various funds on the 1st of February are reported as follows:

| | |
|----------------------------|--------------|
| Bisbee Dist. Bldg. Fund | \$ 528.75 |
| Babocomari Bldg. Fund | 19.99 |
| Babocomari Dist. Int. Fund | 176.55 |
| Cochise Dist. Bldg. Fund | .30 |
| Cochise Dist. Int. Fund | 692.82 |
| Dragon do | 124.57 |
| Douglas Dist. Bldg. Fund | 18.20 |
| Excess Tax Sales Fund | 271.63 |
| Hereford Dist. Bldg. Fund | 69.80 |
| Hereford Dist. Int. Fund | 258.71 |
| Wilcox High School Fund | 2,296.31 |
| Naco Dist. Int. Fund | 1,992.70 |
| Palomina Int. Fund | 227.50 |
| Territorial Tax Fund | 492,196.63 |
| Tombstone Dist. Bldg. Fund | 667.71 |
| Tombstone Dist. Int. Fund | 1,564.67 |
| General County Fund | 11,849.10 |
| Tombstone High School | 625.69 |
| Salary Fund | 6,678.63 |
| Road Fund | 27,882.38 |
| Unapportioned School Fund | 96.28 |
| School Dist. Fund | 79,925.28 |
| Douglas Dist. Int. Fund | 32,497.57 |
| Hijabe Dist. Int. Fund | 15,746.77 |
| Maricopa Dist. Int. Fund | 874.94 |
| Wilcox Dist. Int. Fund | 2,075.14 |
| Teachers Inst. Fund | 97.89 |
| Uncollected Estates | 515.20 |
| Douglas High School Fund | 8,889.28 |
| Bisbee High School Fund | 7,659.39 |
| Total | \$522,993.47 |

Well-Fed Brains and Healthy Body

Can Do Things

Grape-Nuts

FOOD

Builds Both

"There's a Reason"



BE the signal service never so perfect— it depends after all on the man who works the levers and the trainmen who observe the signal.

But one thing shares with the American railroad man his tremendous responsibility—his watch.

The Time Inspectors of 140 of the leading railroads of America have officially certified and adopted the Hogan Lever-setting model—the finest railroad watch in the world.

A Hogan Watch is always worth what you pay for it.

Printed in the U.S.A.—Patented in U.S.A. and 15 other countries.

Let us show you this distinctive watch.

L. L. Gilman
OPT. POSTOFFICE MAIN ST.

Eyes Examined and Glasses fitted for All Refractive Errors and Muscular Troubles.

Dr. F. D. Rockefeller
Optometrist

Registered by Examination in New York, Minnesota and Arizona With C. M. HENKEL, The One Price Jeweler and Optometrist

WAIT FOR US

Denver, Colo. Phoenix, Ariz.

The Swigert Bros. Optical Co.
ARIZONA'S RELIABLE OPTICIANS

Special Expertise in the Fitting and Manufacturing of Glasses

SEND US YOUR BROKEN GLASSES TO BE REPAIRED OR DUPLICATED

NEXT TRIP Mch. 14, 15, 16 & 17

DR. H. A. SCHELL'S EYE WATER

THE BEST

OF ALL PREPARATIONS

25 Cents Buys a Big Bottle of Pure Vanilla Extract At The BISBEE DRUG CO.

THE ARIZONA AND NEW MEXICO RAILROAD CO. PASSENGER SERVICE

Daily South Bound North Bound
7:25 a. m. Lv Clifton Ar. 4:03 p. m.
8:15 a. m. Lv Guthrie Lv 2:30 p. m.
9:00 a. m. Lv Duncan Lv 2:36 p. m.
10:23 a. m. Lv Lordsburg Lv 1:32 p. m.
11:39 a. m. Ar Hatchita Lv 12:10 p. m.

South bound train connects with Southern Pacific west bound train No. 1, leaving Lordsburg 10:57 a. m., Mountain Time.

South bound train connects with El Paso & Southwestern east bound train for El Paso, leaving Hatchita at 11:59 a. m., Mountain Time, and with west bound train for Douglas and Bisbee, leaving Hatchita at 11:59 a. m., Mountain Time.

A. T. THOMSON,
Traffic Manager, Clifton, Arizona.