



**ORGANISATION EUROPÉENNE POUR LA RECHERCHE NUCLÉAIRE
EUROPEAN ORGANIZATION FOR NUCLEAR RESEARCH**

Laboratoire Européen pour la Physique des Particules
European Laboratory for Particle Physics

CERN

Personnel Statistics

2010

Human Resources Department
March 2011

Contents

Table		Page
1.	Total number of members of the personnel by department, status and funding	4
2.	Evolution in the number of staff members, fellows and associates over the last 5 years	5
3.	Total number of female members of the personnel by department and status	6
4.	Staff, fellows and paid associates by professional category	7
5a.	Staff members by gender and professional category	8
5b.	Users by gender and professional category	8
6.	Staff members by professional category over the past 10 years	9
7.	Users by nationality and professional category	10
8.	Staff members by type of contract and years of service	11
9.	Staff members by professional category and type of contract	12
10.	Evolution in the number of staff members by professional category and type of contract over the past 5 years	13
11.	Evolution in the number of children, infants and personnel receiving family allowance ov	14
12.	Staff Members by Nationality and Type of Residence	15
13.	Other members of the personnel by nationality and status	16
14.	Staff members by nationality and professional category	17
15.	Staff members by nationality, career path and gender	18
16.	Staff members by nationality, gender and professional category	19
17.	Evolution in the number of staff members by age range over the last 10 years	20
18.	Staff members by age range and professional category	21
19.	Fellows and associates by age range	22
20.	Average age by professional category, status and type of contract	23
21.	Staff members by professional category and years of service	23
	Staff Recruitment	
22.	Number of candidates applied/invited/appeared for selection boards and appointments made by nationality and gender	24
23.	Vacancies published and filled	24
24.	Number of candidates selected by nationality over the past 5 years	25
25.	Staff members recruited (arrivals) by professional category	26
	Fellows	
26a./b.	Recruitment of fellows by gender and nationality	27
27.	Number of fellows selected by nationality over the past 5 years	27
	Students	
28.	Number of candidates applied and selected for the technical and doctoral student programme by nationality and gender	28
29.	Number of students selected (TECH, DOCT) by nationality over the past 5 years	28
30.	Number of candidates applied and selected for the summer student programme by nationality and gender	28
31.	Staff member arrivals and departures by residential category and nationality	29
32.	Staff member arrivals and departures by professional category	30
33.	Staff member departures by professional category, type of contract and reason for leaving	31

Definitions

Departments / Units

Code Department

BE	Beams
DG	Director-General
EN	Engineering
FP	Finance and Procurement
GS	General Infrastructure Services
HR	Human Resources
IT	Information Technology Services
PF	Pension Fund
PH	Physics
TE	Technology

Nationalities

According to the international ISO codes

MS	Member States
NMS	Non-member States

Professional Categories

Code Category

1	Scientific Work (Experimental and Theoretical Physics)
2	Scientific and Engineering Work (other than Experimental and Theoretical Physics)
3	Technical Work
4	Manual Work, Crafts and Trades
5a	Administrative Work (Professional Level)
5b	Office and Administrative Work
5c	Office Work

Types of Contract

LD	Limited Duration Contract
FT	Fixed-Term Contract
IC	Indefinite Contract

Grouping of Associated Members of the Personnel

Paid Assoc. includes Paid Associates as well as Project Associates, Unpaid Associates with Subsistence Allowance, Corresponding Associates

NOTES

Please note that 2427 Staff in 'headcount' equates to 2341 FTE for 2010 of which 107 FTE are externally funded, 50 are paid but not available and therefore 2184 are active staff paid by CERN in line with the figures presented in the APR

Adjustment of strength end 2009 from 2378 according to a change of contract start from 1.12.2009 to 1.1.2010

All figures refer to a headcount as at 31.12.2010 unless specified otherwise.

TABLE 1. Total Number of Members of the Personnel by Department, Status and Funding - 31.12.2010

	Staff	Fellows	Paid Assoc. MS	Paid Assoc. NMS	Students	Apprent.	Total CERN	Users MS	Users NMS	Grand Total
BE	373	70	45	17	74		579	53	63	695
DG	107	2	7		4		120	29	9	158
DGS	74	8	3	2	8		95	8	1	104
EN	361	43	12	6	32		454	29	6	489
FP	61				1		62	1		63
GS	235	14	9	4	12		274	1	1	276
HR	75	4	1		1	24	105	1		106
IT	224	50	9		32		315	41	24	380
PF	17						17			17
PH	484	201	100	51	89		925	6119	3541	10585
TE	416	39	14	4	41		514	41	24	579
Total	2427	431	200	84	294	24	3460	6323	3669	13452

- Departures on 31st December are not deducted from end year strength

Figure 1: Members of the Personnel - 31.12.2010

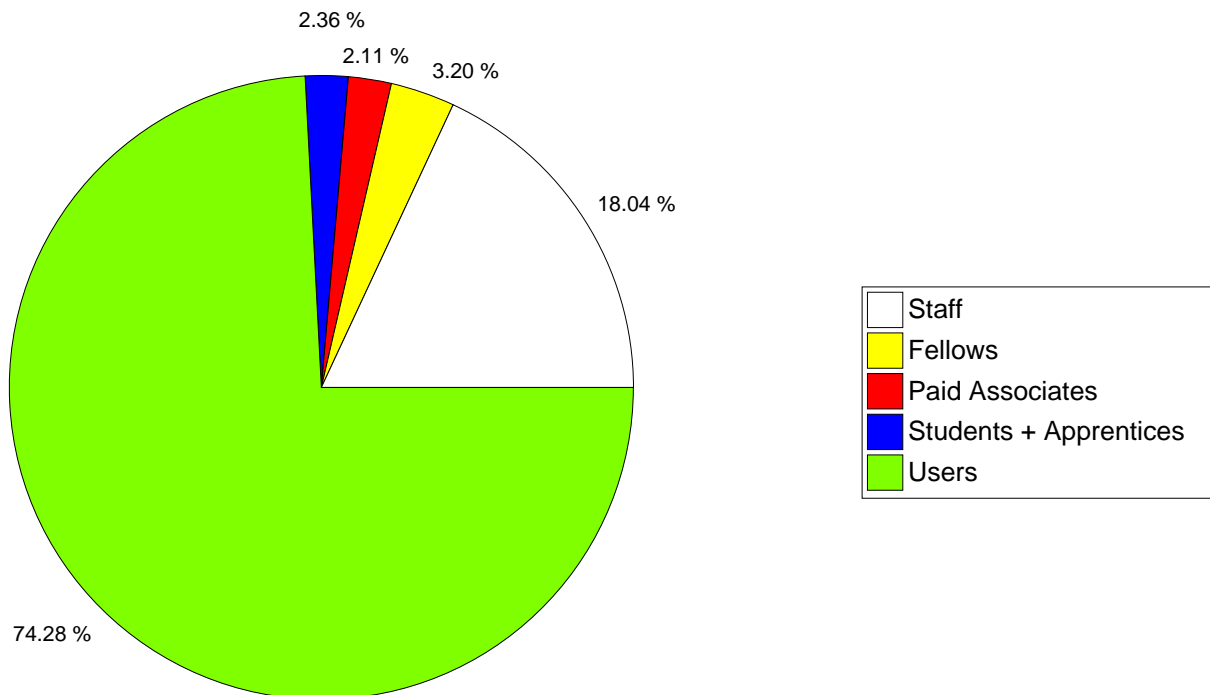


TABLE 2. Evolution in the number of Staff Members, Fellows and Associates over the last 5 years (Students and Apprentices excluded)

	Staff Members			Fellows		Paid Assoc.		CERN Total		Unp. Assoc. +Users		Grand Total	
	internat.	local											
31.12.2006	2 349	296	10	269	23	444	47	3 358	80	7 494	1 161	10 852	1 241
31.12.2007	2 544	0	- 101	276	7	371	- 73	3 191	- 167	8 369	875	11 560	708
31.12.2008	2 400	0	- 144	294	18	290	- 81	2 984	- 207	9 140	771	12 124	564
31.12.2009	2 377	0	- 23	371	77	291	1	3 039	55	9 495	355	12 534	410
31.12.2010	2 427	0	49	431	60	284	- 7	3 142	102	9 992	497	13 134	599

Figure 2. Evolution in the number of Staff Members, Fellows and Associates over the last 10 years (Students and Apprentices excluded)

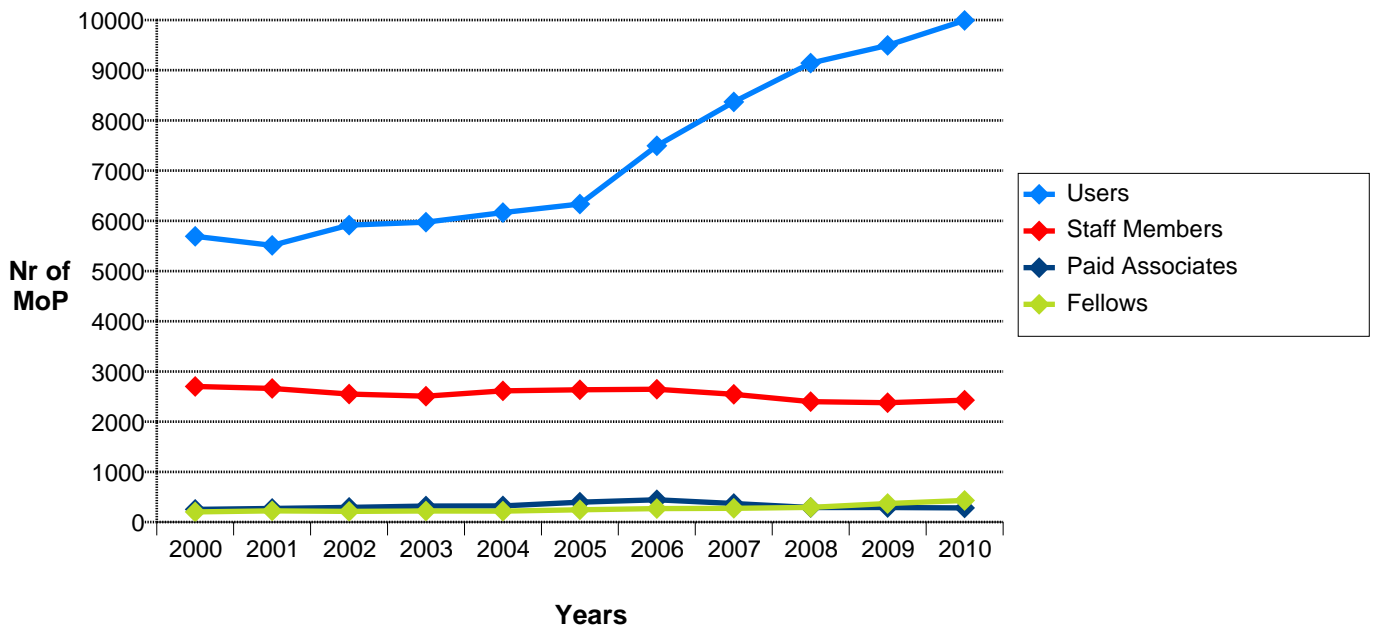


TABLE 3. Total Number of Female Members of the Personnel by Department and Status - 31.12.2010

	Staff	Fellows	Paid Assoc. MS	Paid Assoc. NMS	Students	Apprent.	Users MS	Users NMS	Total CERN	Grand Total
BE	53	15	6	2	11		4	3	87	94
DG	60	2	2		2		11	5	66	82
DGS	22	5	2	1	1		3		31	34
EN	33	8	1		8		8		50	58
FP	42								42	42
GS	53	1	2		4			1	60	61
HR	63	3				6	1		72	73
IT	40	7			2		6	7	49	62
PF	8								8	8
PH	91	34	12	10	19		1015	537	166	1718
TE	43	7	3		10		9		63	72
Total	508	82	28	13	57	6	1057	553	694	2304

	Staff	Fellows	Paid Assoc.	Students	Apprent.	Users	Total CERN Paid	Grand Total
%	20.93	19.03	14.44	19.39	25.00	16.11	20.06	17.13

Figure 3: Evolution in the Percentage of Female Members of the Personnel over the last 10 years

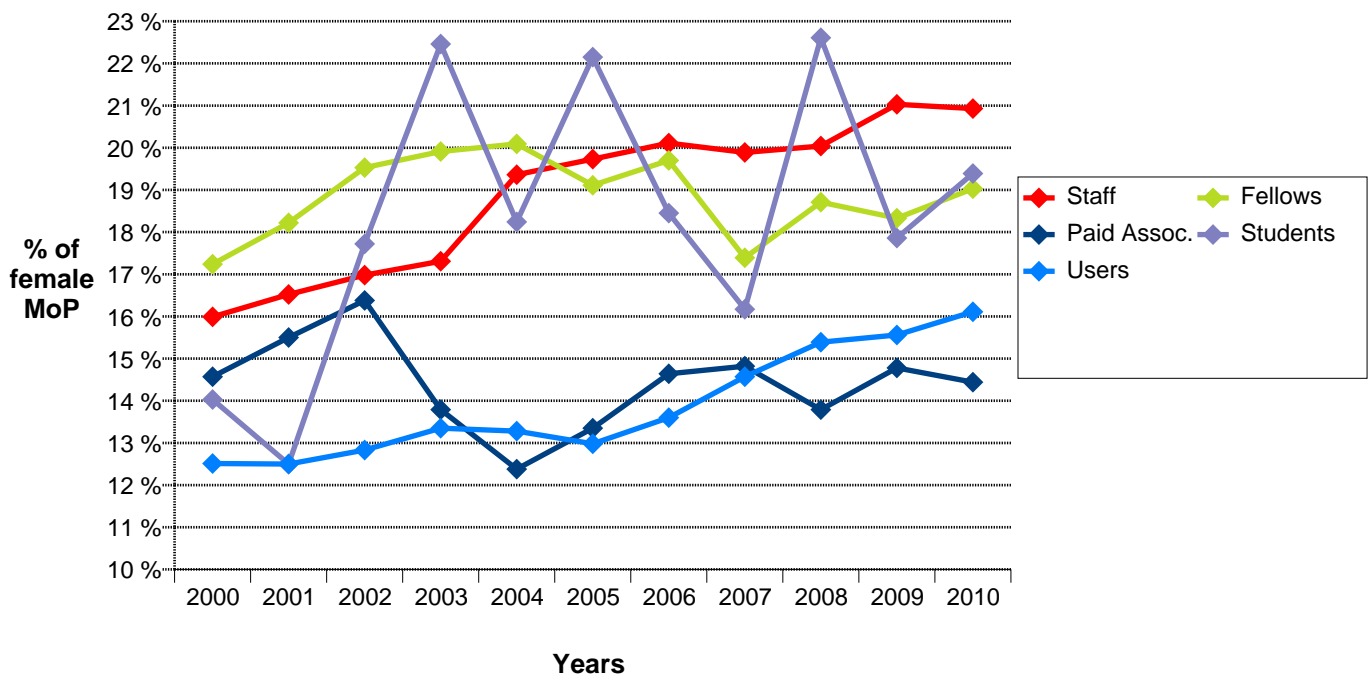


TABLE 4. Staff Members, Fellows and Paid Associates by Professional Category, at End 2010 and 2009

	2010						2009					
	Staff		Fellows & Paid Assoc.		Total		Staff		Fellows & Paid Assoc.		Total	
	Nr	%	Nr	%	Nr	%	Nr	%	Nr	%	Nr	%
1. Research Physicists	75	3.09	235	32.87	310	9.87	74	3.11	237	35.80	311	10.23
2. Scientific & Eng. work	947	39.02	453	63.36	1400	44.56	908	38.20	402	60.73	1310	43.11
3. Technical work	850	35.02	16	2.24	866	27.56	826	34.75	12	1.81	838	27.57
4. Manual work	157	6.47			157	5.00	171	7.19			171	5.63
5a. Prof. Admin. work	121	4.99	10	1.40	131	4.17	109	4.59	10	1.51	119	3.92
5b. Office and Admin. work	256	10.55	1	0.14	257	8.18	266	11.19	1	0.15	267	8.79
5c. Office work	21	0.87			21	0.67	23	0.97			23	0.76
Total	2427	100	715	100	3142	100	2377	100	662	100	3039	100

Figure 5a. Female Staff Members by Professional Category - 31.12.2010

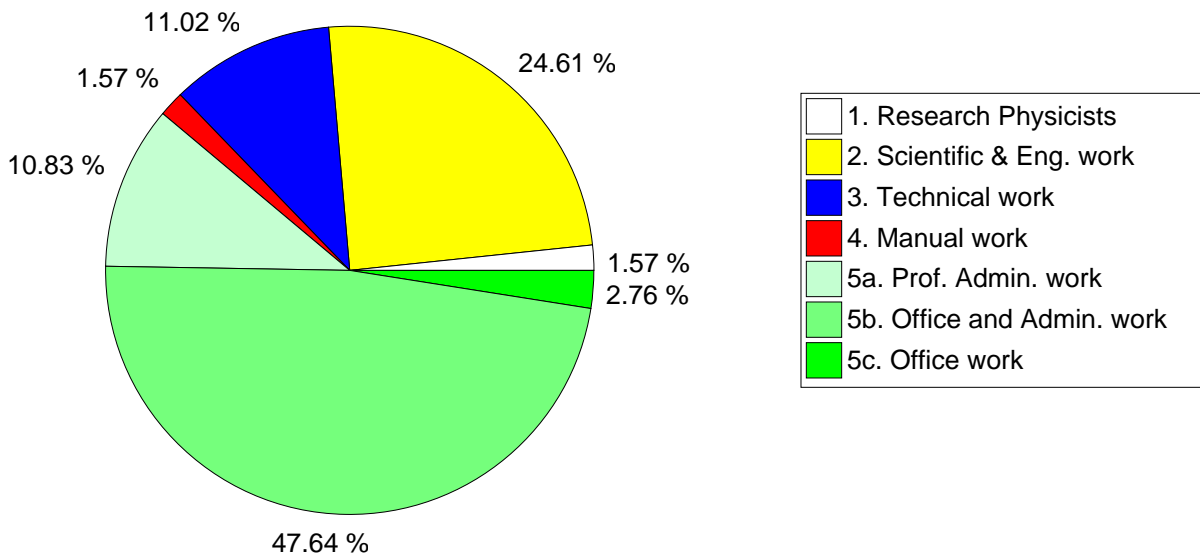


TABLE 5A. Staff Members by Gender and Professional Category - 31.12.2010

	Professional Category														Total	%
	1	%	2	%	3	%	4	%	5a	%	5b	%	5c	%		
Men	67	89.33	822	86.80	794	93.41	149	94.90	66	54.55	14	5.47	7	33.33	1919	79.07
Women	8	10.67	125	13.20	56	6.59	8	5.10	55	45.45	242	94.53	14	66.67	508	20.93
Total	75	100	947	100	850	100	157	100	121	100	256	100	21	100	2427	100

TABLE 5B. Users by Gender and Professional Category - 31.12.2010

	Professional Category														Total	%
	1	%	2	%	3	%	4	%	5a	%	5b	%	5c	%		
Men	6894	83.00	907	90.16	554	91.87	5	100.00	22	31.88					8382	83.89
Women	1412	17.00	99	9.84	49	8.13			47	68.12	3	100.00			1610	16.11
Total	8306	100	1006	100	603	100	5	100	69	100	3	100			9992	100

Professional Categories	1. Research Physicists	2. Scientific & Eng. work	3. Technical work	4. Manual work	5a. Prof. Admin. work	5b. Office and Admin. work	5c. Office work
-------------------------	------------------------	---------------------------	-------------------	----------------	-----------------------	----------------------------	-----------------

Figure 5b: Female Users by Professional Category - 31.12.2010

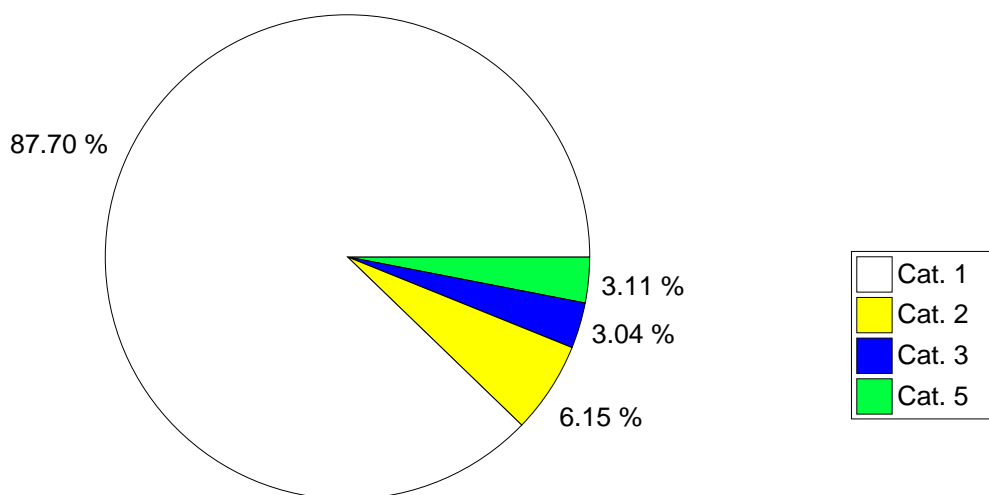


TABLE 6. Staff Members by Professional Category over the past 10 years

Prof. Category	2000	2001	2002	2003	2004	2005	2006	2007	2008	2009	2010
1	90	88	81	72	74	73	76	78	71	74	75
2	960	979	977	953	958	957	980	969	914	908	947
3	933	911	862	862	881	898	900	867	838	826	850
4	271	244	203	205	224	233	224	208	190	171	157
5A	130	130	127	128	126	122	122	111	106	109	121
5B	251	251	254	249	305	308	303	279	256	266	256
5C	67	60	46	38	46	44	40	32	25	23	21
Total	2702	2663	2550	2507	2614	2635	2645	2544	2400	2377	2427

Professional Categories	1. Research Physicists	2. Scientific & Eng. work	3. Technical work	4. Manual work	5a. Prof. Admin. work	5b. Office and Admin. work	5c. Office work
-------------------------	------------------------	---------------------------	-------------------	----------------	-----------------------	----------------------------	-----------------

Figure 6. Staff Members by Professional Category over the past 10 years

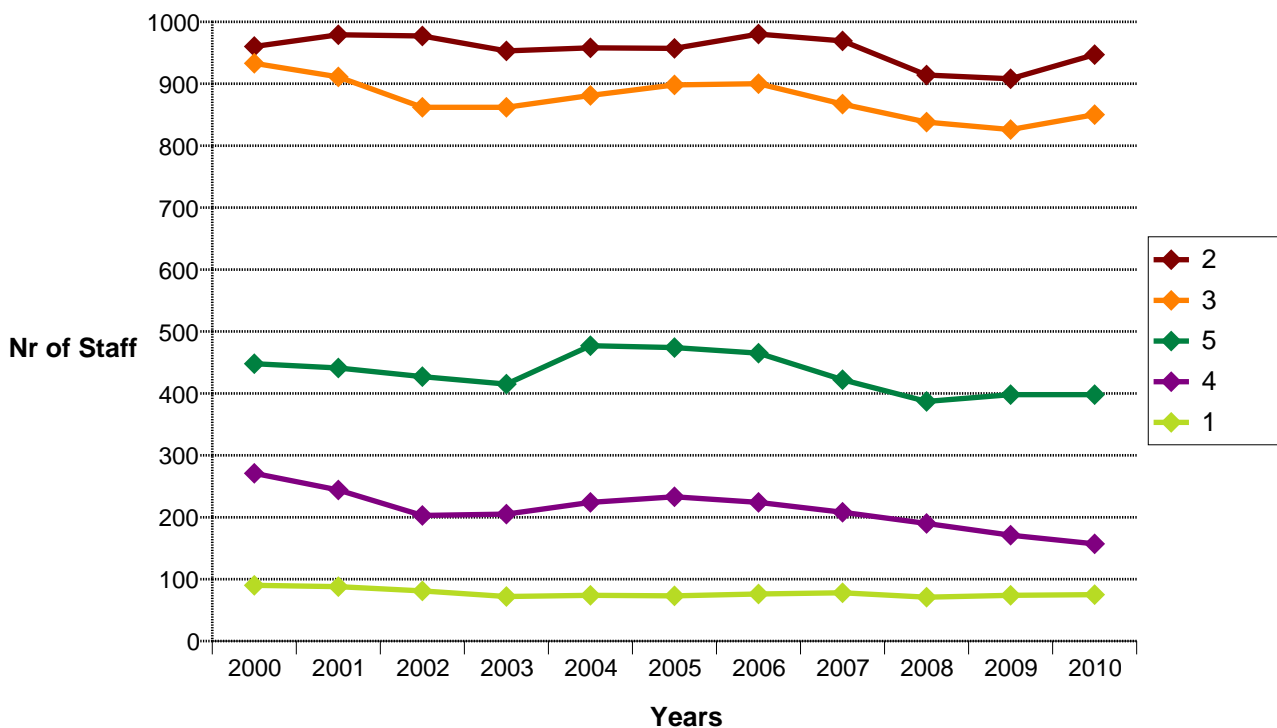


TABLE 7. Users by Nationality and Professional Category - 31.12.2010

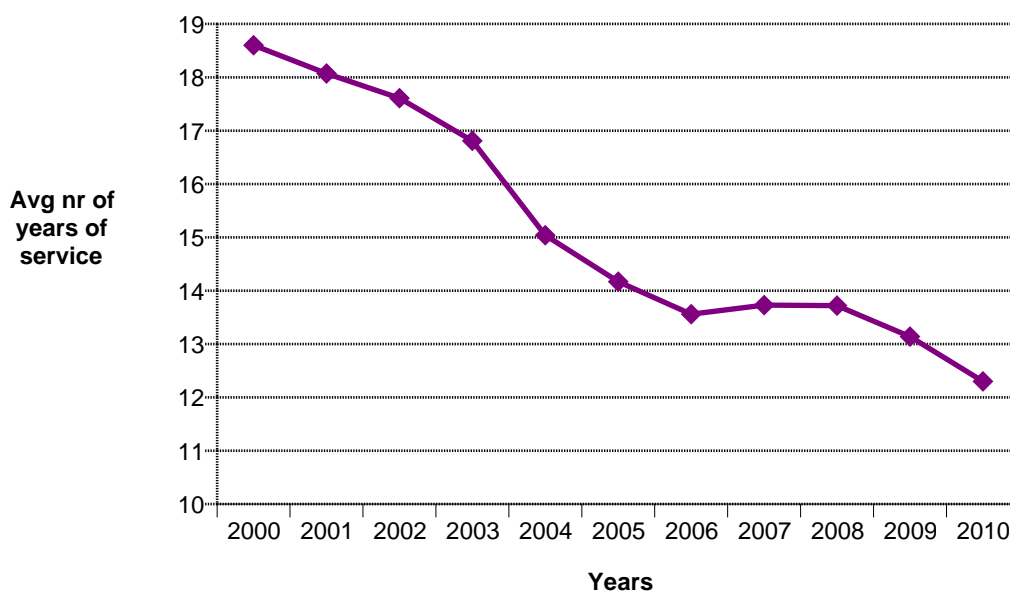
Nationality	Professional Category						Total
	1. Research Physicists	2. Scientific & Eng. work	3. Technical work	4. Manual work	5a. Prof. Admin. work	5b. Office and Admin. work	
AT	82	10	5		3		100
BE	87	10	6		1		104
BG	58	11	8				77
CH	151	24	19	2	4		200
CZ	158	22	7	1			188
DE	1041	47	50		9	1	1148
DK	58	4	5				67
ES	277	50	15				342
FI	65	4	2		8	1	80
FR	505	164	85	2	10	1	767
GB	524	49	28		6		607
GR	148	13	1				162
HU	54	10	2				66
IT	1318	134	193		6		1651
NL	113	30	24		1		168
NO	54	11	1				66
PL	195	28	13		1		237
PT	108	15	4				127
SE	65	6	3		1		75
SK	76	15					91
NMS	3169	349	132		19		3669
Total	8306	1006	603	5	69	3	9992
%	83.13	10.07	6.03	0.05	0.69	0.03	100

TABLE 8. Staff Members by Type of Contract and Years of Service - 31.12.2010

	Limited Duration Contract		Indefinite Contract		Total		Grand Total	%
	Full Time	Part Time	Full Time	Part Time	Full Time	Part Time		
>= 35			95	37	95	37	132	5.44
30-34			113	11	113	11	124	5.11
25-29			167	11	167	11	178	7.33
20-24			120	7	120	7	127	5.23
15-19			248	11	248	11	259	10.67
10-14			352	17	352	17	369	15.20
5-9	85	4	482	22	567	26	593	24.43
0-4	573	13	58	1	631	14	645	26.58
Total	658	17	1635	117	2293	134	2427	100

Note: Entry may have taken place under a different contract status, followed by conversion to Staff Member, in which case only the service as Staff Member is counted.

Figure 8: Evolution in the Average Number of Years of Service of Staff Members over the last 10 years



**TABLE 9. Staff Members by Professional Category and Type of Contract -
31.12.2010**

Professional Category	Type of Contract				Total	%
	Limited Duration Contract	% of Total Category	Indefinite Contract	% of Total Category		
1. Research Physicists	33	44.00	42	56.00	75	100
2. Scientific & Eng. work	231	24.39	716	75.61	947	100
3. Technical work	249	29.29	601	70.71	850	100
4. Manual work	48	30.57	109	69.43	157	100
5a. Prof. Admin. work	33	27.27	88	72.73	121	100
5b. Office and Admin. work	75	29.30	181	70.70	256	100
5c. Office work	6	28.57	15	71.43	21	100
Total	675	27.81	1752	72.19	2427	100

Table 10. Evolution in the Numbers of Staff Members by Professional Category and Type of Contract over the past 5 years

		2006	%	2007	%	2008	%	2009	%	2010	%
1	LD	32	42.11	35	44.87	28	39.44	32	43.24	33	43.42
	IC	44	57.89	43	55.13	43	60.56	42	56.76	43	56.58
2	LD	266	27.14	258	26.63	216	23.63	205	22.58	231	24.42
	IC	714	72.86	711	73.37	698	76.37	703	77.42	715	75.58
3	LD	304	33.78	277	31.95	272	32.46	253	30.63	249	29.29
	IC	596	66.22	590	68.05	566	67.54	573	69.37	601	70.71
4	LD	82	36.61	81	38.94	81	42.63	63	36.84	48	30.57
	IC	142	63.39	127	61.06	109	57.37	108	63.16	109	69.43
5A	LD	40	32.79	34	30.63	26	24.53	29	26.61	32	26.67
	IC	82	67.21	77	69.37	80	75.47	80	73.39	88	73.33
5B	LD	128	42.24	117	41.94	110	42.97	106	39.85	78	30.12
	IC	175	57.76	162	58.06	146	57.03	160	60.15	181	69.88
5C	LD	13	32.50	9	28.13	9	36.00	9	39.13	4	21.05
	IC	27	67.50	23	71.88	16	64.00	14	60.87	15	78.95
Total	LD	865	32.70	811	31.88	742	30.92	697	29.32	675	27.81
	IC	1780	67.30	1733	68.12	1658	69.08	1680	70.68	1752	72.19
Grand Total		2645		2544		2400		2377		2427	

Figure 10. Evolution in the Numbers of Staff Members by Type of Contract over the past 5 years

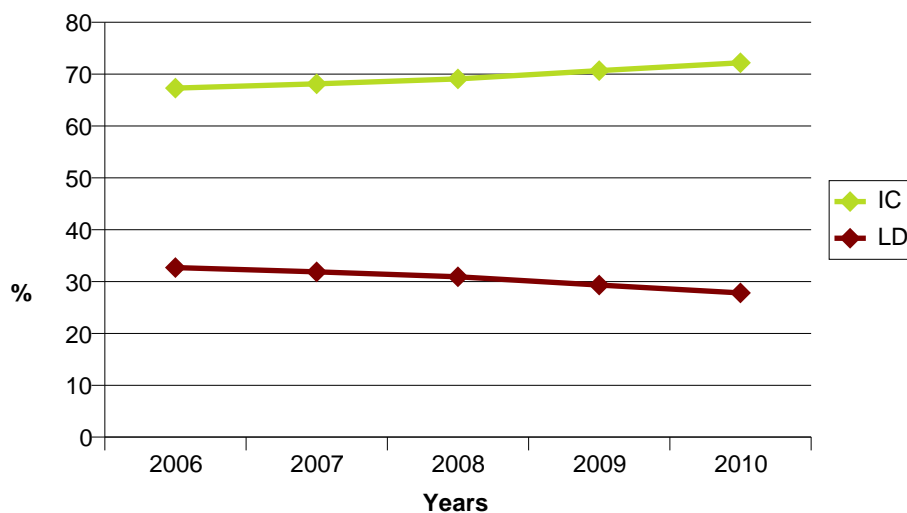


TABLE 11. Evolution in the number of children, infants and personnel receiving family allowance over the last 10 years

Year	Personnel receiving Family allow.	Total Nr of Children	Nr of Infants (<3 years)	Average Age of Children as at 31.12.
2000	2250	2196	303	11.67
2001	2200	2220	334	11.11
2002	2103	2161	312	10.88
2003	2046	2039	290	10.94
2004	2149	2289	365	10.33
2005	2081	2379	384	10.05
2006	2082	2471	404	9.92
2007	2002	2496	385	10.02
2008	1900	2477	380	10.15
2009	1900	2560	398	10.22
2010	1953	2679	433	10.03

Figure 11. Evolution in the Average Age of Children of Members of the Personnel over the last 10 years

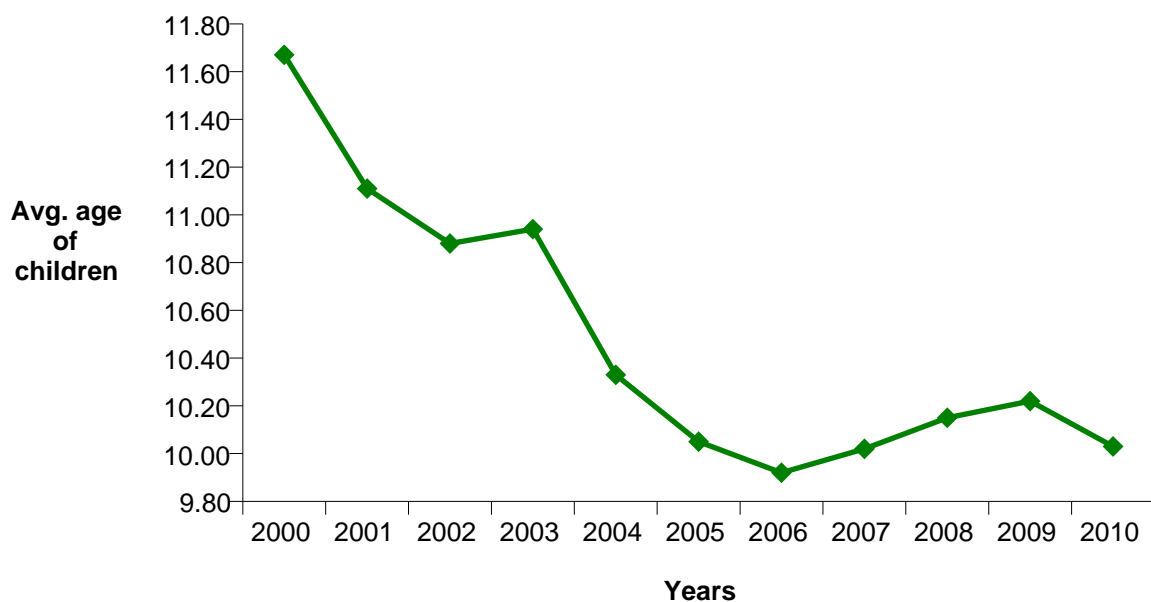


TABLE 12. Staff Members by Nationality and Type of Residence - 31.12.2010

Nationality	SRR 1996 or prior				SRR 2007 or later				Total	
	Non Resident		Resident		International Indemnity		Non International Indemnity			
	Nb.	%	Nb.	%	Nb.	%	Nb.	%	Nb.	%
AT	34	2.86			7	2.42			41	1.69
BE	99	8.33	1	0.20	4	1.38	2	0.45	106	4.37
BG	5	0.42			3	1.04	2	0.45	10	0.41
CH	38	3.20	89	17.66	5	1.73	62	13.93	194	7.99
CZ	5	0.42							5	0.21
DE	144	12.11	6	1.19	24	8.30	4	0.90	178	7.33
DK	14	1.18			3	1.04	1	0.22	18	0.74
ES	65	5.47	9	1.79	17	5.88	5	1.12	96	3.96
FI	16	1.35			9	3.11	3	0.67	28	1.15
FR	262	22.04	368	73.02	56	19.38	338	75.96	1024	42.19
GB	165	13.88	6	1.19	31	10.73	13	2.92	215	8.86
GR	14	1.18			3	1.04	1	0.22	18	0.74
HU	7	0.59			1	0.35	1	0.22	9	0.37
IT	157	13.20	20	3.97	62	21.45	7	1.57	246	10.14
NL	63	5.30	1	0.20	5	1.73	1	0.22	70	2.88
NO	10	0.84			3	1.04			13	0.54
PL	26	2.19			31	10.73			57	2.35
PT	21	1.77	4	0.79	11	3.81	3	0.67	39	1.61
SE	27	2.27			3	1.04	2	0.45	32	1.32
SK	9	0.76			5	1.73			14	0.58
NMS	8	0.67			6	2.08			14	0.58
Total	1189	100	504	100	289	100	445	100	2427	100

SRR = Staff Rules and Regulations

**TABLE 13. Other Members of the Personnel by Nationality and Status -
31.12.2010**

	Fellows		Paid Assoc. *		Students *		Apprent.		Total CERN paid		Users	
	Nb.	%	Nb.	%	Nb.	%	Nb.	%	Nb.	%	Nb.	%
AT	12	2.78	17	5.99	25	8.50			54	5.23	100	1.00
BE	2	0.46			5	1.70			7	0.68	104	1.04
BG	2	0.46	2	0.70	4	1.36			8	0.77	77	0.77
CH	9	2.09	4	1.41	5	1.70	23	95.83	41	3.97	200	2.00
CZ	7	1.62	1	0.35	3	1.02			11	1.06	188	1.88
DE	40	9.28	10	3.52	56	19.05			106	10.26	1148	11.49
DK	1	0.23							1	0.10	67	0.67
ES	47	10.90	24	8.45	30	10.20			101	9.78	342	3.42
FI	8	1.86	1	0.35	8	2.72			17	1.65	80	0.80
FR	50	11.60	41	14.44	13	4.42			104	10.07	767	7.68
GB	28	6.50	8	2.82	18	6.12			54	5.23	607	6.07
GR	11	2.55	6	2.11	20	6.80			37	3.58	162	1.62
HU	9	2.09	1	0.35	3	1.02			13	1.26	66	0.66
IT	83	19.26	57	20.07	28	9.52			168	16.26	1651	16.52
NL	6	1.39	5	1.76	5	1.70	1	4.17	17	1.65	168	1.68
NO	7	1.62	2	0.70	11	3.74			20	1.94	66	0.66
PL	30	6.96	9	3.17	33	11.22			72	6.97	237	2.37
PT	14	3.25	11	3.87	4	1.36			29	2.81	127	1.27
SE	4	0.93	1	0.35	7	2.38			12	1.16	75	0.75
SK	2	0.46			4	1.36			6	0.58	91	0.91
NMS	59	13.69	84	29.58	12	4.08			155	15.00	3669	36.72
Total	431	100	284	100	294	100	24	100	1033	100	9992	100
%	41.72		27.49		28.46		2.32		100			

* partially or totally paid by CERN

TABLE 14. Staff Members by Nationality and Professional Category - 31.12.2010

Professional Category

Nat.	1	2	3	4	5a	5b	5c	Total
AT	2	34	2		2	1		41
BE	1	47	41	1	10	6		106
BG		7			1	2		10
CH	3	44	80	11	11	41	4	194
CZ		3	1			1		5
DE	18	111	32	3	11	3		178
DK	2	9	6			1		18
ES	3	59	20	6	5	2	1	96
FI		5	7	7	4	5		28
FR	9	186	524	111	30	151	13	1024
GB	9	99	50	6	23	27	1	215
GR	2	15				1		18
HU		5	1		2	1		9
IT	16	165	41	6	11	6	1	246
NL	3	34	29		3	1		70
NO	1	3	5		2	1	1	13
PL	1	53	1		2			57
PT	1	25	7	3	1	2		39
SE		20	2	3	3	4		32
SK		13	1					14
NMS	4	10						14
Total	75	947	850	157	121	256	21	2427

Professional Categories	1. Research Physicists	2. Scientific & Eng. work	3. Technical work	4. Manual work	5a. Prof. Admin. work	5b. Office and Admin. work	5c. Office work
--------------------------------	------------------------	---------------------------	-------------------	----------------	-----------------------	----------------------------	-----------------

TABLE 15. Staff Members by Nationality, Career Path and Gender - 31.12.2010

		Career Path														Grand Total	
		A		B		C		D		E		F		G		Grand Total	
Nat.		All Staff	F	All Staff	F	All Staff	F	All Staff	F	All Staff	F	All Staff	F	All Staff	F	All Staff	F
AT						2	1	1	1	26	7	10		2	1	41	10
BE				3	2	7	2	38	5	28	6	25		5		106	15
BG				2	2					8	3					10	5
CH	5			42	27	37	14	52	7	24	4	21	2	13		194	54
CZ						1		1	1	2		1				5	1
DE	1			5	3	6		26	3	64	5	59	3	16	1	177	15
DK				1	1	3		3		7		4				18	1
ES	5	1		4	2	5		15	2	51	20	15	3	1		96	28
FI	7			3	1	2	1	7	3	4		4		1		28	5
FR	65	8		219	73	375	80	139	26	149	42	52	11	25	1	1024	241
GB	6	1		13	10	34	14	31	8	60	14	54	6	16		214	53
GR				1	1					12	3	5	1			18	5
HU				1	1			1		7	1					9	2
IT	6			7	4	17	1	24	3	118	23	59	7	15	2	246	40
NL				1		6	1	23	1	17	2	17		6	1	70	5
NO	1	1		1	1			5	2	3		2		1		13	4
PL						1				50	4	4	2	2		57	6
PT	1			4		4	1	3		22	3	5	2			39	6
SE	3			2	2	2	1	2	1	10	3	10	1	3		32	8
SK								1		10	1	3				14	1
NMS										8	2	6	1			14	3
Total		100	11	309	130	502	116	372	63	680	143	356	39	106	6	2425	508

Above table does not include 'Hors Cadre' (2)

TABLE 16. Staff Members by Nationality, Gender and Professional Category - 31.12.2010

Nat.		Professional Category							Total
		1. Research Physicists	2. Scientific & Eng. work	3. Technical work	4. Manual work	5a. Prof. Admin. work	5b. Office and Admin. work	5c. Office work	
AT	F	1	6	1		1	1		10
	M	1	28	1		1			31
BE	F		4	3		2	6		15
	M	1	43	38	1	8			91
BG	F		3				2		5
	M		4			1			5
CH	F		3	6	1	3	38	3	54
	M	3	41	74	10	8	3	1	140
CZ	F						1		1
	M		3	1					4
DE	F		4	3		5	3		15
	M	18	107	29	3	6			163
DK	F						1		1
	M	2	9	6					17
ES	F		20	2		3	2	1	28
	M	3	39	18	6	2			68
FI	F						5		5
	M		5	7	7	4			23
FR	F	2	33	30	7	19	142	8	241
	M	7	153	494	104	11	9	5	783
GB	F	1	6	5		13	27	1	53
	M	8	93	45	6	10			162
GR	F	1	3				1		5
	M	1	12						13
HU	F		1				1		2
	M		4	1		2			7
IT	F	2	26	2		4	6		40
	M	14	139	39	6	7		1	206
NL	F		1	2		2			5
	M	3	33	27		1	1		65
NO	F			2			1	1	4
	M	1	3	3		2			9
PL	F	1	4			1			6
	M		49	1		1			51
PT	F		4			1	1		6
	M	1	21	7	3		1		33
SE	F		3			1	4		8
	M		17	2	3	2			24
SK	F		1						1
	M		12	1					13
NMS	F		3						3
	M	4	7						11
Total	F	8	125	56	8	55	242	14	508
	M	67	822	794	149	66	14	7	1919
		75	947	850	157	121	256	21	2427

TABLE 17. Evolution in the Number of Staff Members by Age Range over the last 10 years

	2000	2005	2010
19-25	27	63	20
26-30	193	204	187
31-35	331	384	329
36-40	310	436	432
41-45	253	348	430
46-50	235	289	357
51-55	452	268	289
56-60	632	422	239
61-65	269	221	144
Total	2702	2635	2427

Figure 17. Evolution in the Number of Staff Members by Age Range over the last 10 years

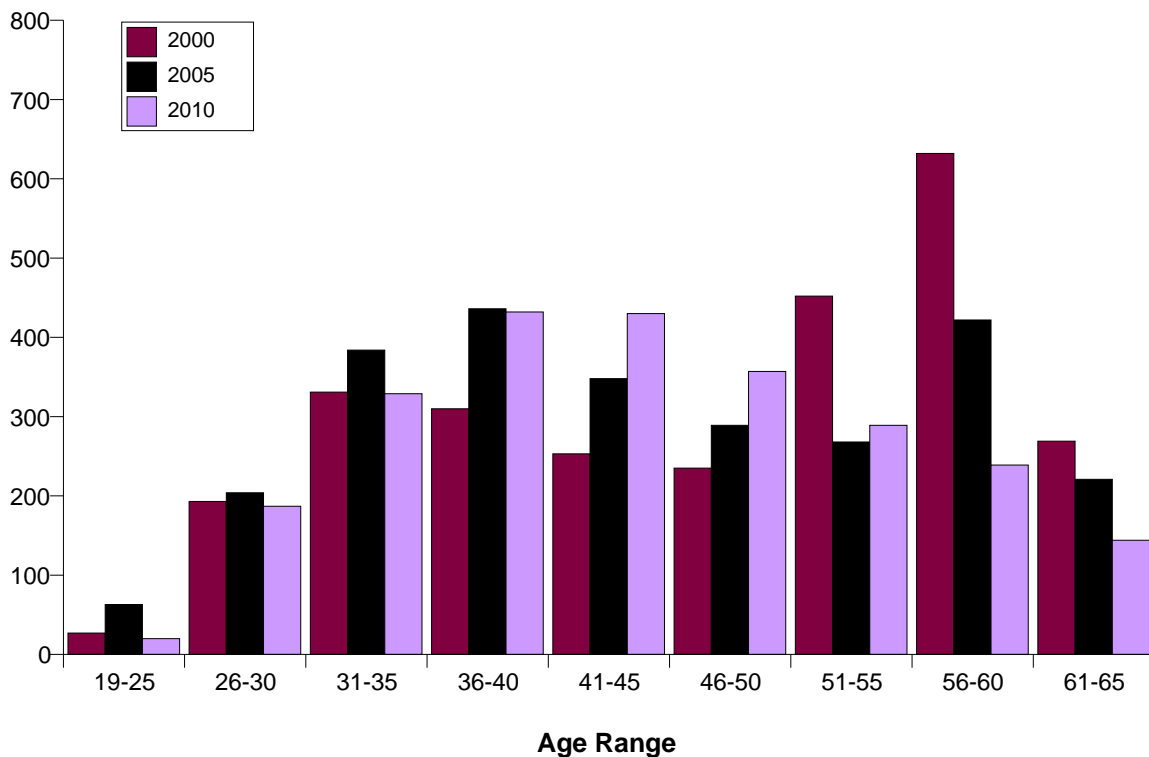


TABLE 18. Staff Members by Age Range and Professional Category - 31.12.2010

	1. Research Physicists	2. Scientific & Eng. work	3. Technical work	4. Manual work	5a. Prof. Admin. work	5b. Office and Admin. work	5c. Office work	Total	%
61-65	5	62	36	7	11	21	2	144	5.93
56-60	9	66	98	34	9	21	2	239	9.85
51-55	8	124	92	18	18	22	7	289	11.91
46-50	16	163	102	20	26	27	3	357	14.71
41-45	10	185	142	21	23	48	1	430	17.72
36-40	17	165	149	23	22	55	1	432	17.80
31-35	10	124	123	25	7	36	4	329	13.56
26-30		56	95	9	5	21	1	187	7.70
<= 25		2	13			5		20	0.82
Total	75	947	850	157	121	256	21	2427	100
Average Age	45.8	44.4	42.9	45.8	46.5	43.1	47.5	44.0	

Figure 18. Evolution in the Average Age of Staff Members over the last 10 years

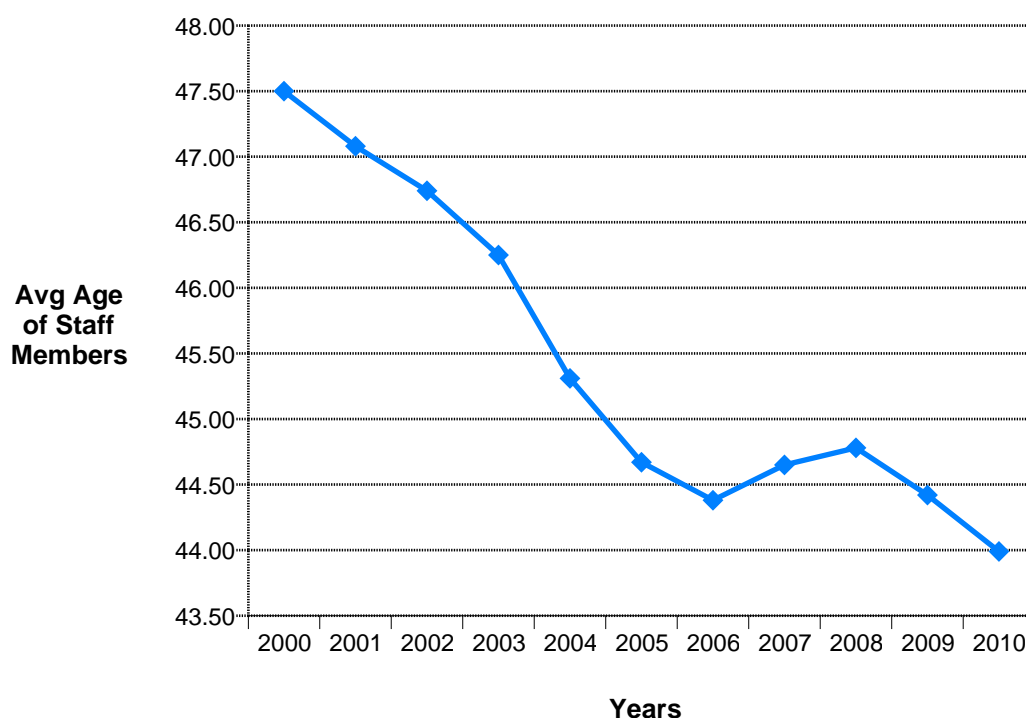


TABLE 19. Fellows and Associates by Age Range - 31.12.2010

	Fellows		Paid Assoc.		Users		Grand Total	
<= 25	29	6.73 %	44	15.49 %	955	9.56 %	1028	9.60 %
26-30	198	45.94 %	86	30.28 %	1902	19.04 %	2186	20.42 %
31-35	177	41.07 %	49	17.25 %	1324	13.25 %	1550	14.48 %
36-40	25	5.80 %	28	9.86 %	1134	11.35 %	1187	11.09 %
41-45			22	7.75 %	1025	10.26 %	1047	9.78 %
46-50	2	0.46 %	25	8.80 %	958	9.59 %	985	9.20 %
51-55			8	2.82 %	828	8.29 %	836	7.81 %
56-60			10	3.52 %	686	6.87 %	696	6.50 %
61-65			8	2.82 %	546	5.46 %	554	5.17 %
> 65			4	1.41 %	634	6.35 %	638	5.96 %
Total	431	100 %	284	100 %	9992	100 %	10707	100 %

Figure 19. Fellows and Associates by Age Range - 31.12.2010

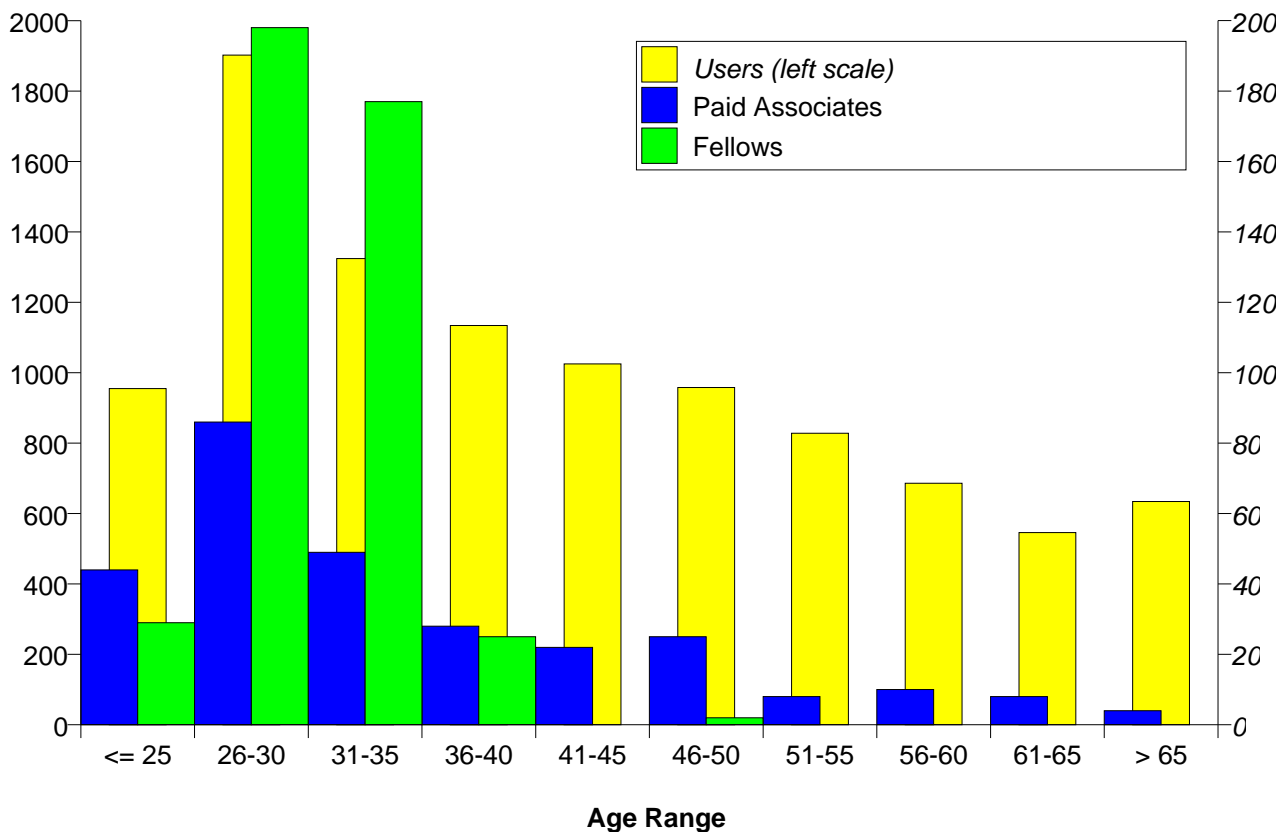


TABLE 20. Average Age by Professional Category, Status and Type of Contract - 31.12.2010

		Professional Category								
		1	2	3	4	5a	5b	5c		
Staff	LD	40.30	34.69	34.94	35.56	41.21	36.03	35.33	35.59	43.99
	IC	50.12	47.47	46.23	50.28	48.42	46.04	52.33	47.23	
Fellows	LD	31.80	29.86	27.86		31.00			30.34	

TABLE 21. Staff Members by Professional Category and Years of Service - 31.12.2010

Completed Years of Service in 2010	Professional Category							Total	%
	1	2	3	4	5a	5b	5c		
>= 35	1	42	50	12	4	20	3	132	5.44
30-34	1	31	56	12	3	18	3	124	5.11
25-29	3	78	59	10	10	16	2	178	7.33
20-24	5	74	32	2	6	8		127	5.23
15-19	13	136	70	4	24	11	1	259	10.67
10-14	8	202	115	3	22	18	1	369	15.20
5-9	7	156	234	74	21	94	7	593	24.43
0-4	37	228	234	40	31	71	4	645	26.58
Total	75	947	850	157	121	256	21	2427	100

Average Years of Service of Staff Members	9.16	13.02	12.06	11.15	12.32	11.80	15.71	12.30
--	-------------	--------------	--------------	--------------	--------------	--------------	--------------	--------------

Professional Categories	1. Research Physicists	2. Scientific & Eng. work	3. Technical work	4. Manual work	5a. Prof. Admin. work	5b. Office and Admin. work	5c. Office work
--------------------------------	------------------------	---------------------------	-------------------	----------------	-----------------------	----------------------------	-----------------

Staff Recruitment

TABLE 22. Applications Received, Candidates Invited/Appeared for Selection Boards and Appointments Made During 2010 by Nationality and Gender

Nationality	Number of candidates			Invited			Appeared			Selected			Success rate
	F	M	Total	F	M	Total	F	M	Total	F	M	Total	
AT	7	18	25	2	5	7	1	5	6	1	1	2	8.00 %
BE	20	60	80	4	5	9	3	4	7		1	1	1.25 %
BG	19	51	70	2	4	6	2	4	6	2	1	3	4.29 %
CH	134	290	424	10	42	52	7	33	40	2	12	14	3.30 %
CZ	13	26	39	1	1	2	0	1	1				
DE	28	125	153	5	30	35	5	27	32	4	9	13	8.50 %
DK	3	17	20		6	6		5	5		1	1	5.00 %
ES	64	333	397	7	44	51	7	41	48	1	5	6	1.51 %
FI	10	67	77	1	15	16	1	15	16		6	6	7.79 %
FR	412	1419	1831	46	282	328	40	255	295	14	72	86	4.70 %
GB	82	299	381	16	58	74	12	52	64	3	17	20	5.25 %
GR	42	139	181	6	8	14	5	7	12	1	1	2	1.10 %
HU	18	40	58	3	5	8	3	5	8		1	1	1.72 %
IT	103	538	641	18	91	109	18	84	102	5	27	32	4.99 %
NL	11	38	49	2	7	9	1	7	8	1	3	4	8.16 %
NO	7	9	16		2	2		2	2		1	1	6.25 %
PL	30	100	130	7	26	33	7	25	32	2	8	10	7.69 %
PT	38	130	168	4	16	20	4	14	18	1	5	6	3.57 %
SE	12	33	45	2	6	8	2	6	8	1	1	2	4.44 %
SK	16	35	51	2	6	8	2	6	8		1	1	1.96 %
NMS	72	263	335	2	6	8	1	6	7		1	1	0.30 %
	1141	4030	5171	140	665	805	121	604	725	38	174	212	4.10 %

Figure 22. Applications, Candidates Invited and Selected in 2010 by Gender

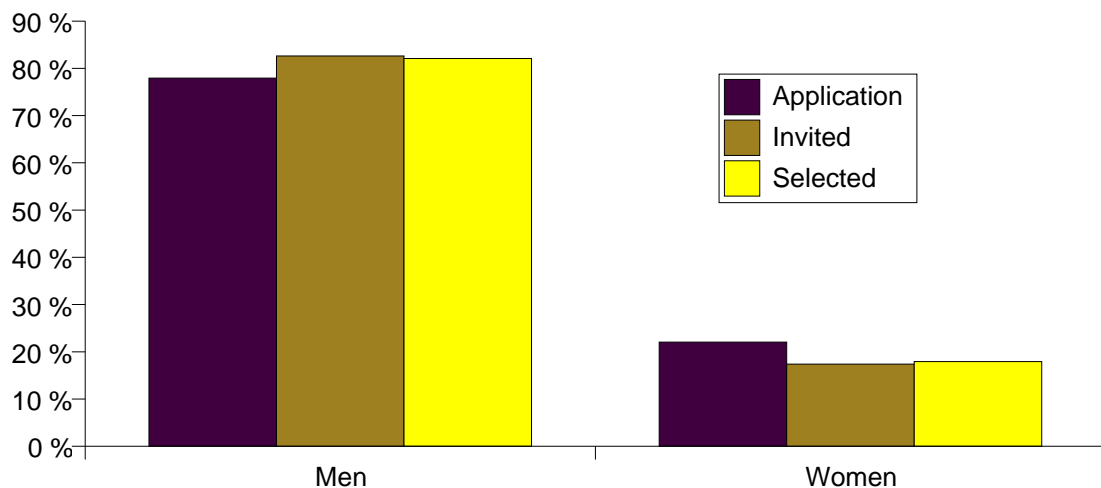


TABLE 23. Vacancies Published and Filled During 2010

Vacancies published in 2010	145
Vacancies published and filled in 2010	88
Vacancies published in 2010 and open as at 31.12.	57

TABLE 24. Number of Staff candidates selected by nationality over the past 5 years

	2006	2007	2008	2009	2010	Total
AT	7	2	1	2	2	14
BE	3	1	3	4	1	12
BG	2		1	1	3	7
CH	14	4	17	18	14	67
CZ	1					1
DE	13	5	9	8	13	48
DK	1	1		2	1	5
ES	8	3	8	7	6	32
FI	4		5	3	6	18
FR	100	23	48	83	86	340
GB	10	3	16	12	20	61
GR	2	1	1	1	2	7
HU	2	1		2	1	6
IT	21	8	15	23	32	99
NL	3	1		1	4	9
NO		1		3	1	5
PL	10	6	4	13	10	43
PT	6	3	5	2	6	22
SE	4			2	2	8
SK		3	2		1	6
NMS	1	6	1	2	1	11
Total	212	72	136	189	212	821

Figure 24. Number of Staff candidates selected over the past 5 years

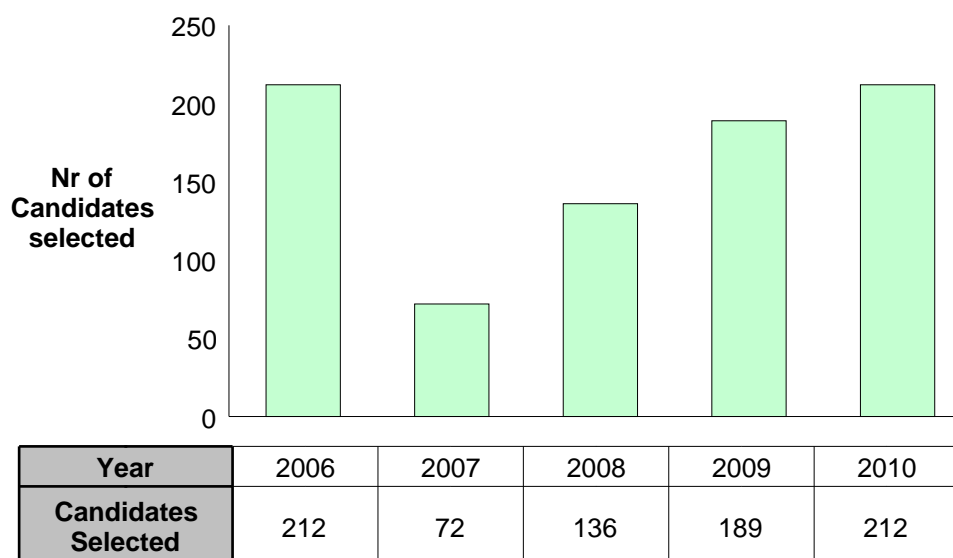


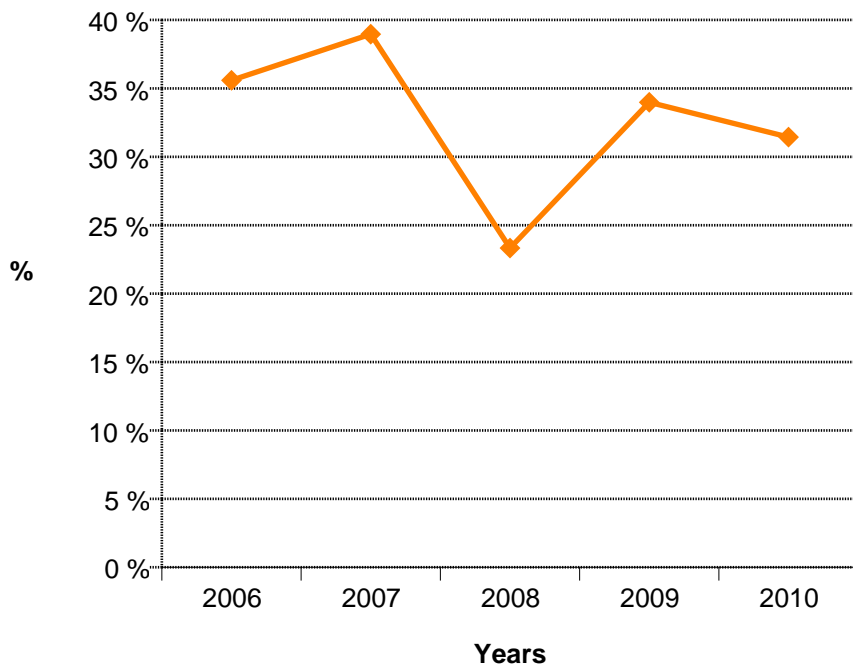
TABLE 25. Staff Members Recruited (Arrivals) in 2010 by Professional Category

From *	Professional Category							Total
	1	2	3	4	5a	5b	5c	
Fellows	1	32	1					34
Other Members of Personnel	5	29	2			2		38
No previous status	4	27	83	16	10	16	1	157
Total	10	88	86	16	10	18	1	229

* Other members of the personnel are: Students, Users and Paid Associates

Professional Categories	1. Research Physicists	2. Scientific & Eng. work	3. Technical work	4. Manual work	5a. Prof. Admin. work	5b. Office and Admin. work	5c. Office work
-------------------------	------------------------	---------------------------	-------------------	----------------	-----------------------	----------------------------	-----------------

Figure 25. Percentage of staff recruited in-house over the past 5 years



Fellows

TABLE 26A. Candidates Applied and Selected during 2010 by Nationality (Supporting National Delegation Where Appropriate) and Gender

		AT	BE	BG	CH	CZ	DE	DK	ES	FI	FR	GB	GR	HU	IT	NL	NO	PL	PT	SE	SK	NMS	Total
Candidates Applied	F		3	5	5	1	13	1	41	3	24	12	18	2	33	1	1	9	7	2	1	73	255
	M	11	8	9	18	10	56	4	145	10	68	87	58	6	159	11	11	48	27	8	8	431	1193
Total		11	11	14	23	11	69	5	186	13	92	99	76	8	192	12	12	57	34	10	9	504	1448
Selected	F	1	1	1			5		7		5	1	1	1	6			4	1			7	41
	M	5	3		4	1	12		24	2	19	17	4	2	29	2	1	11	7			20	163
Total		6	4	1	4	1	17		31	2	24	18	5	3	35	2	1	15	8			27	204
Success rate		55	36	7	17	9	25		17	15	26	18	7	38	18	17	8	26	24			5	14.1

TABLE 26B. Candidates Applied and Selected by Gender and Passport Nationality - 2010

		AT	BE	BG	CH	CZ	DE	DK	ES	FI	FR	GB	GR	HU	IT	NL	NO	PL	PT	SE	SK	NMS	Total
Candidates Applied	F	1	3	5	3	1	12	1	41	3	22	11	18	2	34	1	1	9	7	2	1	77	255
	M	9	7	9	13	10	55	4	145	9	67	75	62	7	159	10	10	48	27	8	8	451	1193
Total		10	10	14	16	11	67	5	186	12	89	86	80	9	193	11	11	57	34	10	9	528	1448
Selected	F	1	1	1			4		7		5	1	1	1	6			4	1			8	41
	M	5	2		3	1	13		24	2	19	15	5	2	30	1	1	11	7			22	163
Total		6	3	1	3	1	17		31	2	24	16	6	3	36	1	1	15	8			30	204
Success rate		60	30	7	19	9	25		17	17	27	19	8	33	19	9	9	26	24			6	14.1

TABLE 27. Number of Fellows selected by nationality over the past 5 years

	AT	BE	BG	CH	CZ	DE	DK	ES	FI	FR	GB	GR	HU	IT	NL	NO	PL	PT	SE	SK	NMS	Total
2006	5	2		7	1	14	3	12	1	16	6	3		28	3	2	8	10	2	1	12	136
2007	4	1		3	3	13	2	14	2	9	7	1		30	2	1	7	6	2	1	11	119
2008	3	3	1	4	1	16	1	14	3	14	13	8	4	39	2	6	13	5	1	3	18	172
2009	8	1	3	6	4	23		21	1	20	14	4	4	34	2	2	16	9	3		34	209
2010	6	3	1	3	1	17		31	2	24	16	6	3	36	1	1	15	8			30	204
Total	26	10	5	23	10	83	6	92	9	83	56	22	11	167	10	12	59	38	8	5	105	840

Students

TABLE 28. Candidates Applied and Selected for the Technical and Doctoral Student Programme during 2010 by Nationality (Supporting National Delegation Where Appropriate) and Gender

		AT	BE	BG	CH	CZ	DE	DK	ES	FI	FR	GB	GR	HU	IT	NL	NO	PL	PT	SE	SK	NMS	Total
Candidates Applied	F	1	1	2	3	2	25		32	6	25	16	19		18		1	9	1	2	1	18	182
	M	14	4	10	13	13	154	5	116	21	147	167	75	6	61	3	26	72	20	6	7	62	1002
Total		15	5	12	16	15	179	5	148	27	172	183	94	6	79	3	27	81	21	8	8	80	1184
Selected	F	1			2	1	4		6		1	3	2		4		1	2				1	28
	M	9	1	4	4		35	1	21	5	12	22	11	3	15	1	12	20	2	2	3	4	187
Total		10	1	4	6	1	39	1	27	5	13	25	13	3	19	1	13	22	2	2	3	5	215
Success rate		67	20	33	38	7	22	20	18	19	8	14	14	50	24	33	48	27	10	25	38	6	18.2

TABLE 29. Number of Students selected (TECH, DOCT) by nationality over the past 5 years

	AT	BE	BG	CH	CZ	DE	DK	ES	FI	FR	GB	GR	HU	IT	NL	NO	PL	PT	SE	SK	NMS	Total
2006	12		1		3	6		11	1	19	5	4	4	21	1	16	15	7	11			137
2007	6	2	2	3	2	38		14	1	14	4	3	3	20	3	11	14	6	8		5	159
2008	21	2	5	2		27	1	18	6	10	5	9	1	17	1	14	17	3	5	4	4	172
2009	15	5	2	3	2	36		23	8	13	3	16	3	18	2	12	16	3	5	1	4	190
2010	10	1	3	3	1	38	1	28	5	13	19	13	3	23	1	13	22	2	1	4	11	215
Total	64	10	13	11	8	145	2	94	21	69	36	45	14	99	8	66	84	21	30	9	24	873

TABLE 30. Candidates Applied and Selected for the Summer Student Programme during 2010 by nationality (supporting national delegation where appropriate) and gender

		AT	BE	BG	CH	CZ	DE	DK	ES	FI	FR	GB	GR	HU	IT	NL	NO	PL	PT	SE	SK	NMS	Total
Candidates Applied	F	8	7	4	3	8	19	3	38	8	19	65	26	3	30	3	7	18	4	8	3	21	305
	M	30	24	9	14	57	69	12	119	39	75	260	50	10	97	20	12	75	21	29	10	68	1100
Total		38	31	13	17	65	88	15	157	47	94	325	76	13	127	23	19	93	25	37	13	89	1405
Selected	F	1	1	1		1	5		4		6	4	3	2	5	1	1	1		1	1	8	46
	M	2	2	1	3	5	13	6	7	3	12	17	2		6	6	2	4	3	8	1	15	118
Total		3	3	2	3	6	18	6	11	3	18	21	5	2	11	7	3	5	3	9	2	23	164
Success rate		8	10	15	18	9	20	40	7	6	19	6	7	15	9	30	16	5	12	24	15	26	11.7

for 126 Member State places

TABLE 31. Staff Member Arrivals and Departures in 2010 by Residential Category and Nationality

Arrivals						Departures				
Nat	Non-Resident	Resident	Total	%	% of staff as at 31.12.	Non-Resident	Resident	Total	%	% of staff as at 31.12.
AT	4		4	1.75	9.76	6		6	3.45	14.63
BE	2		2	0.87	1.89	3		3	1.72	2.83
BG	1	2	3	1.31	30.00	2		2	1.15	20.00
CH	1	17	18	7.86	9.28	5	8	13	7.47	6.70
CZ										
DE	10	4	14	6.11	7.87	8	1	9	5.17	5.06
DK						1		1	0.57	5.56
ES	6		6	2.62	6.25	2		2	1.15	2.08
FI	5		5	2.18	17.86	2		2	1.15	7.14
FR	29	60	89	38.86	8.69	30	63	93	53.45	9.08
GB	19	2	21	9.17	9.77	16		16	9.20	7.44
GR	2		2	0.87	11.11	1		1	0.57	5.56
HU						2		2	1.15	22.22
IT	33	2	35	15.28	14.23	12	2	14	8.05	5.69
NL	4		4	1.75	5.71	4	1	5	2.87	7.14
NO	2		2	0.87	15.38	3		3	1.72	23.08
PL	12		12	5.24	21.05	1		1	0.57	1.75
PT	5	1	6	2.62	15.38					
SE	2	2	4	1.75	12.50	1		1	0.57	3.13
SK	1		1	0.44	7.14					
NMS	1		1	0.44	7.14					
	139	90	229	100	9.44	99	75	174	100	7.17

Labour turnover = 7.24 % of average strength

This table shows all departures from 1 January 2010 to 31 December 2010

TABLE 32. Staff Member Arrivals and Departures in 2010 by Professional Category

	Arrivals	Departures
1	10	7
2	88	56
3	86	53
4	16	27
5a	10	4
5b	18	21
5c	1	6
Total	229	174

Figure 32. Staff Member Arrivals and Departures in 2010 by Professional Category

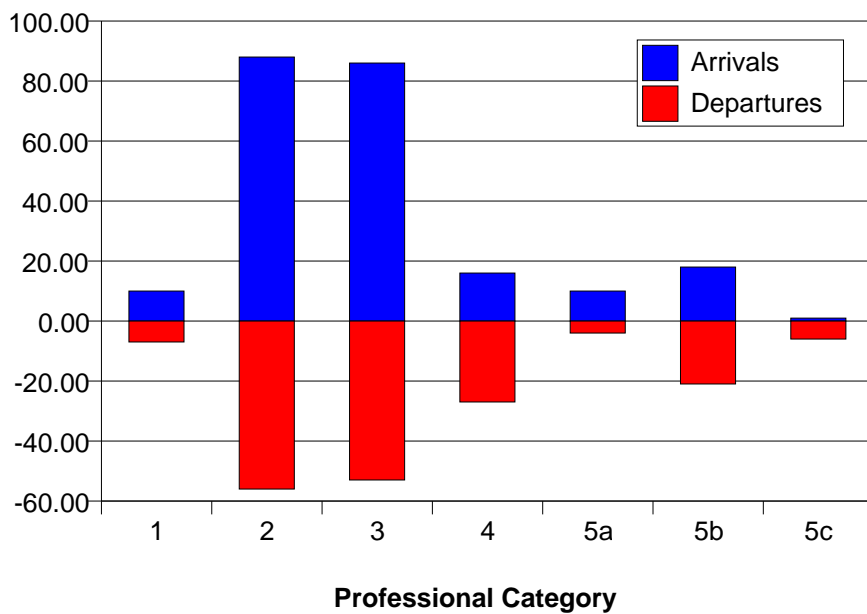


TABLE 33. Staff Member Departures in 2010 by Professional Category, Type of Contract and Reason for Leaving

Reason	Professional Category														T otal			Grand
	1		2		3		4		5a		5b		5c		LD	FT	IC	Total
	IC	LD	IC	LD	IC	LD	IC	LD	IC	LD	IC	LD	IC	LD				
Contract expirations		5		18		14		10		1		12		4	64			64
Contract terminations												1			1			1
Mutual agreement			4	1	4	1	1	1							3		9	12
Death			1				1										2	2
Early retirement			10		21		7		1		7		1				47	47
Family/Social									1	1					1		1	2
Invalidity					2		1										3	3
Job connected		1		1		4						1			7			7
Retirement (age 65)	1		20		3		1						1				26	26
Shift Workers Adm Circ 22			1		4		5										10	10
Total	1	6	36	20	34	19	16	11	2	2	7	14	2	4	76		98	174

This table shows all departures from 1 January 2010 to 31 December 2010

Professional Categories	1. Research Physicists	2. Scientific & Eng. work	3. Technical work	4. Manual work	5a. Prof. Admin. work	5b. Office and Admin. work	5c. Office work
-------------------------	------------------------	---------------------------	-------------------	----------------	-----------------------	----------------------------	-----------------