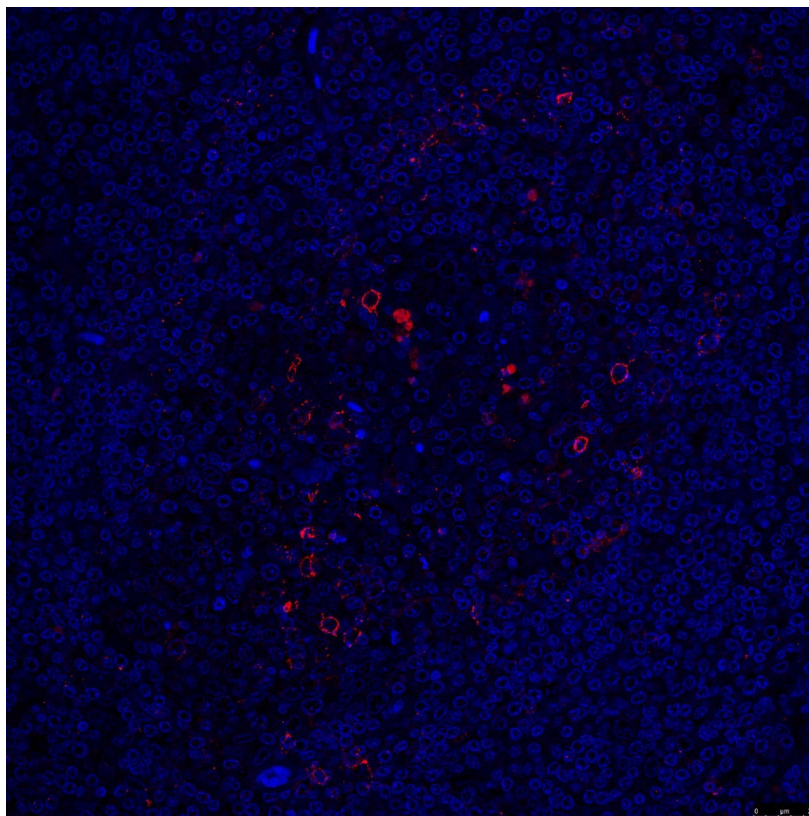


Article DOI: <https://doi.org/10.3201/eid3012.240505>

EID cannot ensure accessibility for supplementary materials supplied by authors. Readers who have difficulty accessing supplementary content should contact the authors for assistance.

Feline Panleukopenia Virus in a Marsican Brown Bear and Crested Porcupine, 2022–2023

Appendix



Appendix Figure. Immunofluorescence in mesenteric lymph node of a crested porcupine (*Hystrix cristata*) for CPV/FPV (*Protoparvovirus carnivoran1*). Formalin fixed and paraffin embedded tissue sections were incubated with a primary antibody anti-CPV (1:50 dilution, rabbit polyclonal antibody) that cross reacts with FPV, followed by incubation with a fluorescein isothiocyanate-conjugated goat anti-rabbit IgG (1:100, ThermoFisher Scientific, <https://www.thermofisher.com>) used as secondary antibody. CPV-antigens (red color) were detected in cells residing in a germinal center of a lymphoid follicle. Nuclei are counterstained with 4',6-Diamidino-2-Phenylindole (DAPI). Control sections of mesenteric lymph node tissues from other crested porcupines were negative. Scale bar indicates 25 μm .