



# NOAA - National Weather Service

Tampa Bay Area

2525 14th Avenue SE, Ruskin, Florida 33570

813-645-2323 <https://weather.gov/tampabay>

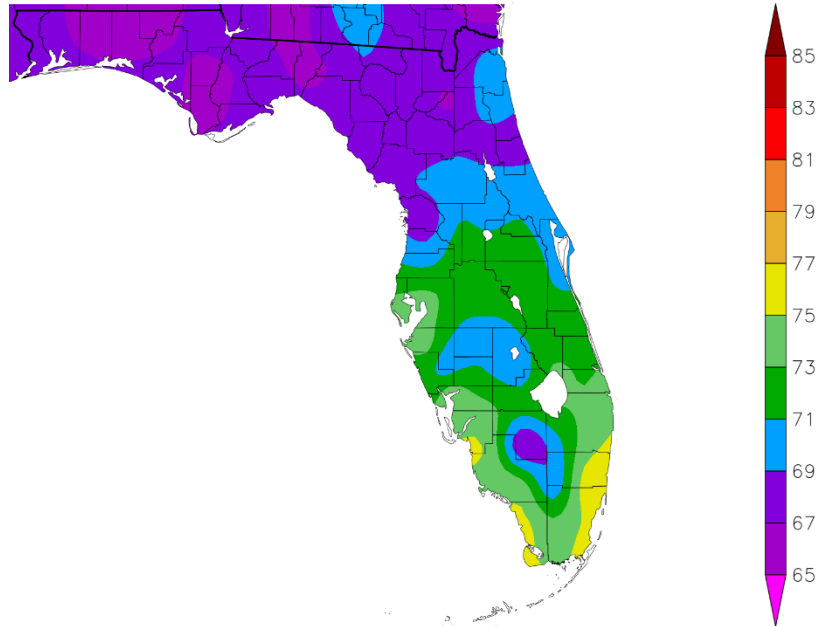
## April 2024 Climate Summary for West Central and Southwest Florida

Temperatures averaged from about 2.5 degrees Fahrenheit below normal to 1 degree Fahrenheit above normal this April. This is thanks to many days with rather dry air across the region which allowed the low temperatures to fall below normal on numerous mornings while some afternoons were above normal.

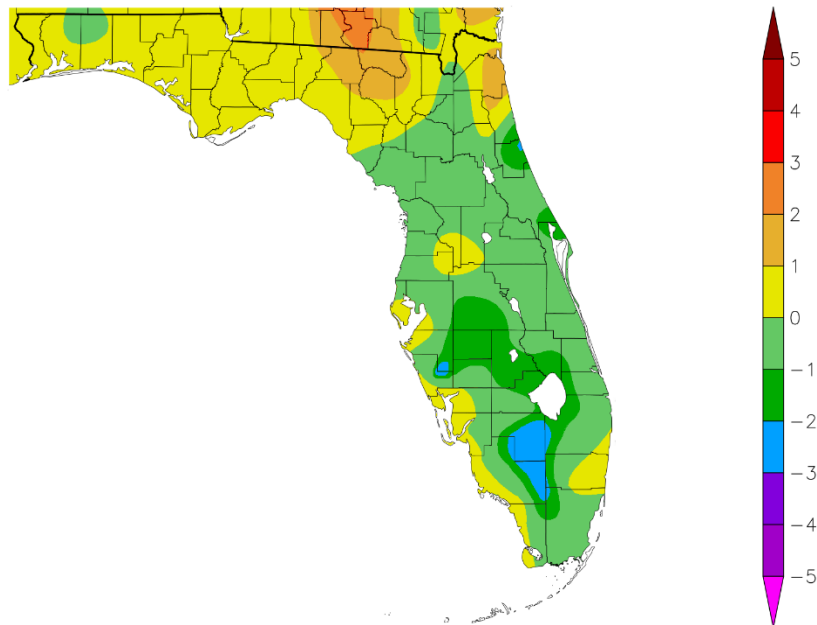
### APRIL TEMPERATURE RANKINGS (°F):

Location	April 2024		Normal Apr Temp	Dep fm Normal	Records Began
	Rank	Avg Temp			
St Petersburg Area	26th Warmest	75.1°	74.1°	+1.0°	Aug 1914
Fort Myers Area	80th Coolest	74.6°	74.8°	-0.2°	Jan 1902
Punta Gorda Area	35th Warmest (tie)	73.8°	73.1°	+0.7°	May 1914
Tampa Area	104th Coolest	73.7°	73.9°	-0.2°	Apr 1890
Winter Haven Area	40th Coolest (tie)	73.4°	73.8°	-0.4°	Mar 1941
Venice	26th Warmest	72.8°	72.5°	+0.3°	May 1955
Plant City	80th Coolest (tie)	72.8°	73.5°	-0.7°	Sep 1892
Lakeland Area	51st Coolest	72.3°	73.2°	-0.9°	Jan 1915
Sarasota-Bradenton Area	72nd Coolest (tie)	72.2°	72.6°	-0.4°	Jan 1911
Tarpon Springs	83rd Coolest	72.0°	72.2°	-0.2°	Jan 1892
Bartow	36th Coolest (tie)	71.1°	72.5°	-1.4°	Jun 1892
St. Leo	52nd Coolest	70.8°	71.4°	-0.6°	Apr 1895
Wauchula 2 N	21st Coolest	70.2°	71.0°	-0.8°	Jan 1933
Myakka River State Pk	10th Coolest	69.8°	72.5°	-2.7°	Mar 1956
Archbold Bio Stn	16th Coolest	69.7°	71.7°	-2.0°	Jan 1969
Brooksville Area	30th Coolest (tie)	69.1°	69.2°	-0.1°	Jan 1892
Inverness 3 SE	14th Coolest (tie)	68.2°	68.5°	-0.3°	Jul 1948
Chiefland 5 ESE	15th Coolest	67.3°	68.4°	-1.1°	Jul 1956

Temperature (F)  
4/1/2024 - 4/30/2024



Departure from Normal Temperature (F)  
4/1/2024 - 4/30/2024

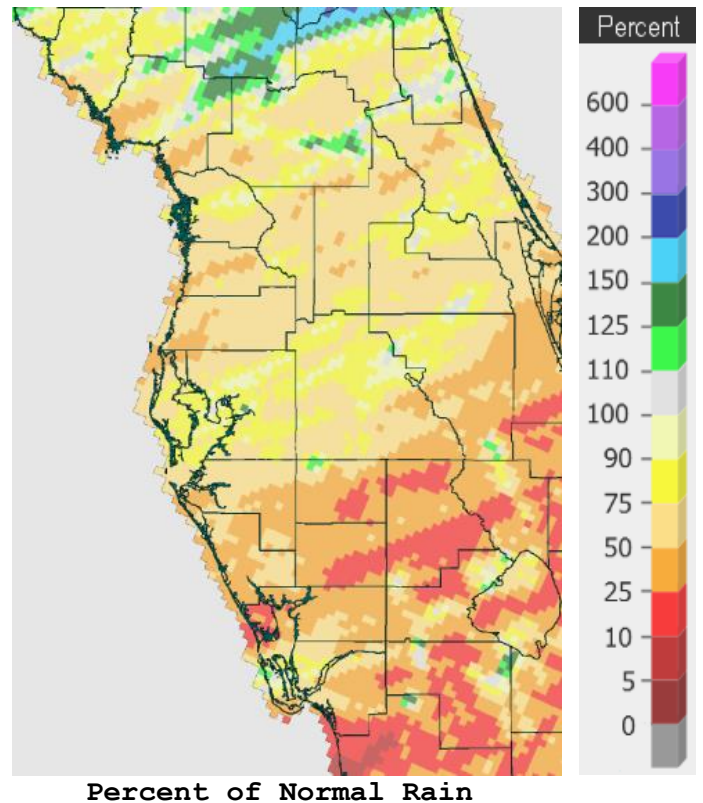
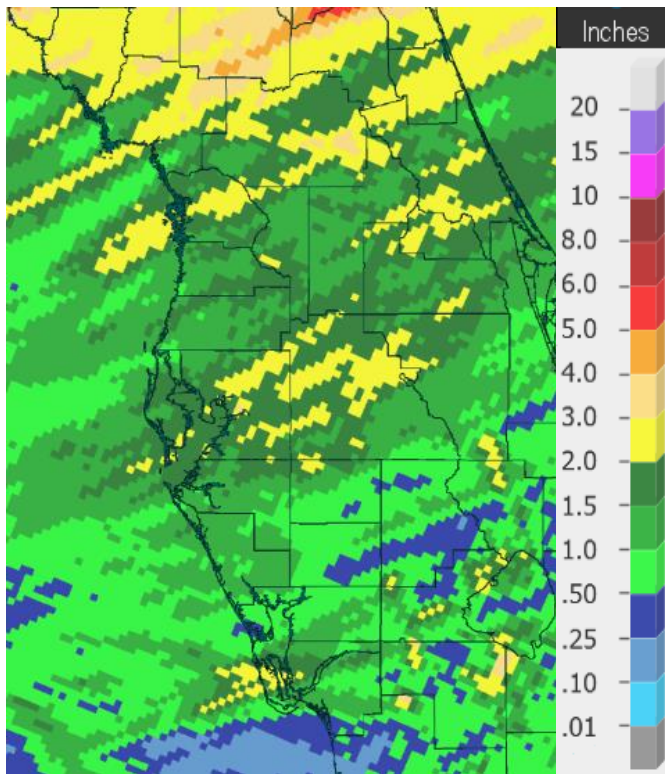


Graphics Source: High Plains Regional Climate Center (HPRCC)

As far as rainfall, April is usually one of the drier months of the year. This was true across almost all of the area this year, especially south of a line from about Sarasota to Frostproof where many areas ended up less than 50 percent of normal.

**APRIL RAINFALL (inches):**

Location	Rank	April 2024 Rain Total	Normal Apr Rain	Dep fm Normal	Records Began
Lakeland Area	60th Driest	2.14	2.82	-0.68	Jan 1915
Inverness 3 SE	36th Driest	2.05	2.69	-0.64	Jul 1948
Brooksville Area	57th Driest (tie)	1.98	2.18	-0.20	Jan 1892
Winter Haven Area	42nd Driest	1.84	2.50	-0.66	Mar 1941
St. Petersburg Area	51st Driest	1.63	1.93	-0.30	Aug 1914
Bartow	45th Driest	1.55	2.72	-1.17	Jun 1892
Venice	34th Driest	1.52	2.47	-0.95	May 1955
Plant City	48th Driest	1.51	2.88	-1.37	Jan 1893
Tarpon Springs	58th Driest	1.47	2.69	-1.22	Jan 1892
Tampa Area	55th Driest (tie)	1.34	2.55	-1.21	Apr 1890
St. Leo	36th Driest	1.32	3.06	-1.74	Apr 1895
Myakka River State Pk	28th Driest	1.28	2.98	-1.70	Sep 1943
Wauchula 2 N	21st Driest	1.14	2.92	-1.78	Jan 1933
Chiefland 5 ESE	14th Driest	1.08	2.97	-1.89	Jul 1956
Sarasota-Bradenton Area	34th Driest	1.06	2.46	-1.40	Jan 1911
Fort Myers Area	39th Driest	0.87	2.44	-1.57	Jan 1902
Punta Gorda Area	29th Driest	0.75	2.23	-1.48	May 1914
Archbold Bio Stn	10th Driest	0.62	2.54	-1.92	Jan 1969



On the following pages are tables of the top ten warmest, coolest, wettest, and driest Aprils at some official NWS locations, which includes the average/total so far for this April where available, and the 1991-2020 average temperature and rainfall for the month of April.

**CHIEFLAND 5 ESE** (records began in July 1956):

Warmest Aprils	Coolest Aprils	Wettest Aprils	Driest Aprils
1 73.0 in 1991	1 63.4 in 1961	1 14.61 in 1982	1 0.00 in 1967
2 72.5 in 2002	2 64.8 in 2005	2 8.46 in 1997	2 0.30 in 1963
3 72.2 in 1999	3 64.9 in 2004	3 7.39 in 1995	3 0.31 in 1969
4 71.8 in 1970	4 65.0 in 1962	4 7.16 in 1985	4 0.42 in 2016
5 71.5 in 2020	5 65.3 in 1993	5 7.13 in 1991	5 0.79 in 1989
6 71.3 in 2017	6 65.5 in 2000	6 6.65 in 1957	6 0.80 in 2000
71.3 in 2011	7 65.6 in 2007	7 6.48 in 1983	7 0.88 in 2001
8 71.2 in 1911	8 66.4 in 1966	8 6.22 in 2005	0.88 in 1998
71.2 in 1965	9 66.6 in 1984	9 6.20 in 1961	9 0.91 in 1993
10 70.9 in 1994	10 66.9 in 1986	10 6.12 in 1979	0.91 in 1981
	66.9 in 1983		11 0.98 in 2007
	12 67.0 in 1996		12 1.00 in 1974
	67.0 in 1974		13 1.04 in 1988
	14 67.1 in 2009		<b>14 1.08 in 2024</b>
	<b>15 67.3 in 2024</b>		

Normal Temperature for April at CHIF1 = 68.4°  
 Normal Rainfall for April at CHIF1 = 2.97 in.

**INVERNESS 3 SE** (records began in July 1948):

Warmest Aprils	Coolest Aprils	Wettest Aprils	Driest Aprils
1 75.5 in 1954	1 64.8 in 1993	1 7.88 in 1953	1 0.00 in 1967
2 74.9 in 2015	2 66.1 in 2004	2 5.89 in 1991	2 0.06 in 2001
3 74.5 in 1968	3 66.2 in 2000	3 5.76 in 2011	3 0.07 in 1998
4 74.3 in 1967	4 66.3 in 2007	4 5.52 in 2021	4 0.20 in 1978
5 74.2 in 2023	5 66.4 in 1996	5 5.49 in 2022	5 0.26 in 1987
6 74.1 in 1965	6 66.8 in 2003	6 5.20 in 1997	6 0.31 in 1977
7 74.0 in 1970	66.8 in 1992	7 5.15 in 1959	0.31 in 1974
8 73.5 in 2002	8 67.1 in 1998	8 5.01 in 2018	8 0.65 in 1999
9 73.1 in 1969	9 67.3 in 1988	9 5.00 in 1982	9 0.73 in 1968
73.1 in 1963	10 67.4 in 1950	10 4.89 in 1984	10 0.76 in 1981
	11 67.7 in 1990	...	...
	12 68.1 in 2019	<b>41 2.05 in 2024</b>	<b>36 2.05 in 2024</b>
	68.1 in 1961		
	<b>14 68.2 in 2024</b>		
	68.2 in 2001		
	68.2 in 1997		

Normal Temperature for April at INVF1 = 68.5°  
 Normal Rainfall for April at INVF1 = 2.69 in.

**BROOKSVILLE AREA** (records began in January 1892):

Warmest Aprils	Coolest Aprils	Wettest Aprils	Driest Aprils
1 75.5 in 1947	1 64.3 in 2005	1 14.49 in 1928	1 Trace in 2017
75.5 in 1945	64.3 in 2004	2 8.05 in 1900	Trace in 1967
75.5 in 1929	3 64.8 in 1901	3 7.54 in 1935	3 0.04 in 2001
4 75.2 in 2015	4 65.3 in 2000	4 7.41 in 1949	4 0.10 in 1903
5 74.5 in 1927	5 66.8 in 2007	5 7.38 in 1991	5 0.16 in 1977
6 74.4 in 1994	6 67.1 in 1950	6 6.92 in 1953	6 0.20 in 1981
7 74.3 in 2023	7 67.3 in 1892	7 6.48 in 1937	7 0.21 in 1932
8 74.0 in 1909	8 67.5 in 1998	8 6.39 in 1918	8 0.25 in 2006
9 73.9 in 2020	9 67.6 in 1926	9 6.33 in 1982	9 0.26 in 1998
10 73.8 in 1981	10 67.7 in 1952	10 6.20 in 1926	10 0.32 in 1896
...	...	...	...
<b>79 69.1 in 2024</b>	<b>30 69.1 in 2024</b>	<b>70 1.98 in 2024</b>	<b>57 1.98 in 2024</b>
69.1 in 2014	69.1 in 2014	1.98 in 2024	1.98 in 2024
69.1 in 1992	69.1 in 1992		
69.1 in 1925	69.1 in 1925		
69.1 in 1904	69.1 in 1904		

Normal Temperature for April at BKV = 69.2°

Normal Rainfall for April at BKV = 2.18 in.

---

**ST. LEO** (records began in April 1895):

Warmest Aprils	Coolest Aprils	Wettest Aprils	Driest Aprils
1 76.8 in 1908	1 66.4 in 1931	1 15.55 in 1953	1 Trace in 1967
2 76.0 in 1954	2 66.7 in 1987	2 11.22 in 1928	2 0.06 in 1981
76.0 in 1947	66.7 in 1928	3 7.41 in 1937	0.06 in 1922
4 75.7 in 1945	4 67.7 in 1950	4 7.02 in 1997	4 0.09 in 2001
5 75.5 in 2015	67.7 in 1915	5 6.86 in 1991	5 0.11 in 1903
6 75.4 in 2002	67.7 in 1901	6 6.75 in 1949	6 0.12 in 1963
7 75.3 in 1994	7 68.0 in 1903	6.75 in 1941	7 0.13 in 2017
8 74.9 in 2023	8 68.4 in 1916	8 6.61 in 2018	8 0.20 in 1911
74.9 in 1991	9 68.6 in 1993	9 6.33 in 1895	9 0.21 in 1998
10 74.6 in 2006	10 68.7 in 1913	10 6.32 in 2020	10 0.23 in 1896
74.6 in 1999		...	...
...	...	<b>94 1.32 in 2024</b>	<b>36 1.32 in 2024</b>
<b>77 70.8 in 2024</b>	<b>52 70.8 in 2024</b>		

Normal Temperature for April at STLF1 = 71.4°

Normal Rainfall for April at STLF1 = 3.06 in.

**TARPON SPRINGS** (records began in January 1892):

Warmest Aprils	Coolest Aprils	Wettest Aprils	Driest Aprils
1 76.5 in 2015	1 65.7 in 1987	1 7.63 in 1931	1 0.00 in 1967
2 76.4 in 1947	2 67.1 in 1915	2 7.20 in 1942	2 Trace in 1896
3 76.0 in 1991	3 67.2 in 1962	3 6.97 in 1949	3 0.05 in 1922
4 75.3 in 1945	4 67.4 in 1950	4 6.66 in 1928	4 0.07 in 1981
5 75.1 in 1994	67.4 in 1940	5 6.31 in 1953	0.07 in 1972
6 75.0 in 2020	6 67.5 in 1903	6 6.01 in 1957	6 0.08 in 1923
7 74.9 in 1948	7 67.8 in 1916	7 6.00 in 2020	7 0.16 in 1998
8 74.8 in 1922	8 67.9 in 1971	8 5.97 in 1933	8 0.18 in 1903
74.8 in 1912	67.9 in 1961	9 5.90 in 1959	9 0.20 in 2017
10 74.7 in 2002	67.9 in 1910	10 5.70 in 1941	10 0.23 in 1910
74.7 in 1929		...	...
...	...	<b>74 1.47 in 2024</b>	<b>58 1.47 in 2024</b>
<b>43 72.0 in 2024</b>	<b>83 72.0 in 2024</b>		
72.0 in 2012	72.0 in 2012		
72.0 in 1967	72.0 in 1967		
72.0 in 1957	72.0 in 1957		
72.0 in 1933	72.0 in 1933		

Normal Temperature for April at TRPF1 = 72.2°

Normal Rainfall for April at TRPF1 = 2.69 in.

---

**TAMPA AREA** (records began in April 1890):

Warmest Aprils	Coolest Aprils	Wettest Aprils	Driest Aprils
1 78.0 in 2015	1 66.3 in 1987	1 10.71 in 1997	1 Trace in 1981
2 77.1 in 2017	2 66.7 in 1901	2 8.04 in 1920	Trace in 1967
3 77.0 in 2023	3 67.2 in 1993	3 7.23 in 1931	3 0.02 in 2001
4 76.9 in 2022	4 67.7 in 1950	4 6.76 in 2022	4 0.05 in 1969
5 76.8 in 1991	5 68.1 in 1903	5 6.73 in 2020	5 0.16 in 1922
6 76.6 in 1947	6 68.2 in 1899	6 6.59 in 1957	0.16 in 1898
7 76.4 in 1908	7 68.6 in 1983	7 6.14 in 1933	7 0.21 in 1963
8 76.3 in 2011	68.6 in 1961	8 5.75 in 1926	8 0.31 in 1892
76.3 in 2002	68.6 in 1915	9 5.48 in 1959	9 0.35 in 1938
10 76.0 in 1945	68.6 in 1891	10 5.38 in 1895	10 0.37 in 1946
...	...	...	...
<b>32 73.7 in 2024</b>	<b>104 73.7 in 2024</b>	<b>80 1.34 in 2024</b>	<b>55 1.34 in 2024</b>
		1.34 in 1893	1.34 in 1893

Normal Temperature for April at TPA = 73.9°

Normal Rainfall for April at TRA = 2.55 in.

**ST. PETERSBURG** (records began in August 1914):

Warmest Aprils	Coolest Aprils	Wettest Aprils	Driest Aprils
1 78.6 in 2015	1 68.5 in 1950	1 9.73 in 1997	1 0.00 in 1967
2 77.2 in 2023	2 68.7 in 1987	2 9.09 in 1920	2 Trace in 1981
3 77.0 in 2011	3 68.9 in 1993	3 8.45 in 1951	3 0.01 in 1974
77.0 in 1947	4 69.2 in 1952	4 7.69 in 1933	4 0.04 in 2001
5 76.9 in 2002	5 69.3 in 1983	5 7.39 in 1957	5 0.07 in 1987
6 76.6 in 1991	6 70.1 in 1916	6 7.20 in 2003	6 0.11 in 1998
7 76.5 in 2020	7 70.2 in 1915	7 6.16 in 1960	7 0.24 in 1932
76.5 in 2013	8 70.4 in 1951	8 6.09 in 1948	8 0.25 in 1977
9 76.1 in 1929	9 70.6 in 1931	9 5.81 in 1931	9 0.27 in 2006
10 76.0 in 1981	10 70.8 in 1996	10 5.46 in 1941	0.27 in 1963
76.0 in 1954	70.8 in 1961	...	...
76.0 in 1922		<b>60 1.63 in 2024</b>	<b>51 1.63 in 2024</b>
...			
<b>26 75.1 in 2024</b>			

Normal Temperature for April at SPG = 74.1°

Normal Rainfall for April at SPG = 1.93 in.

-----  
**PLANT CITY** (Temperature records began in Sep 1892 and  
Rainfall records began in Jan 1893):

Warmest Aprils	Coolest Aprils	Wettest Aprils	Driest Aprils
1 77.9 in 2023	1 65.0 in 1901	1 7.29 in 1931	1 0.00 in 2001
2 77.2 in 2020	2 65.5 in 1987	2 7.13 in 1957	0.00 in 1981
3 76.9 in 2015	3 65.9 in 1931	3 7.11 in 1933	0.00 in 1967
4 76.1 in 1947	4 67.4 in 1932	4 6.56 in 1928	4 0.16 in 1987
5 75.9 in 1912	5 67.6 in 1983	5 6.53 in 1941	5 0.20 in 1923
6 75.8 in 1911	67.6 in 1902	6 6.40 in 1937	0.20 in 1911
7 75.7 in 1945	7 67.7 in 2005	7 6.36 in 1947	7 0.26 in 1938
8 75.6 in 2011	8 67.9 in 1993	8 6.06 in 1997	8 0.27 in 1963
9 75.5 in 1991	9 68.0 in 1940	9 6.00 in 1951	9 0.31 in 1977
10 75.3 in 2017	10 68.2 in 1925	10 5.78 in 1959	10 0.32 in 1898
...	...	...	...
<b>36 72.8 in 2024</b>	<b>80 72.8 in 2024</b>	<b>79 1.51 in 2024</b>	<b>48 1.51 in 2024</b>
72.8 in 1995	72.8 in 1995		
72.8 in 1944	72.8 in 1944		

Normal Temperature for April at PLCF1 = 73.5°

Normal Rainfall for April at PLCF1 = 2.88 in.

**LAKELAND AREA** (records began in January 1915):

Warmest Aprils	Coolest Aprils	Wettest Aprils	Driest Aprils
1 77.2 in 2015	1 67.3 in 1950	1 8.48 in 1959	1 0.00 in 1967
2 77.0 in 2023	2 68.3 in 2005	2 8.36 in 1939	2 0.04 in 2001
3 76.6 in 2020	68.3 in 1952	3 8.35 in 1934	3 0.05 in 1963
4 76.5 in 1991	4 68.5 in 1987	4 8.15 in 1951	4 0.09 in 1981
5 76.3 in 1994	5 68.6 in 1961	5 7.71 in 1928	5 0.22 in 1977
6 76.2 in 1922	68.6 in 1951	6 6.84 in 1997	6 0.25 in 1922
7 76.1 in 2011	7 68.7 in 2007	7 6.77 in 1957	7 0.42 in 1972
8 75.8 in 1947	8 68.9 in 1973	8 6.66 in 1920	0.42 in 1969
9 75.6 in 1945	9 69.0 in 1983	9 5.82 in 1926	9 0.43 in 1932
10 75.4 in 1929	10 69.5 in 1931	10 5.60 in 1941	10 0.44 in 1945
...	69.5 in 1915	...	...
<b>57 72.3 in 2024</b>	<b>51 72.3 in 2024</b>	<b>51 2.14 in 2024</b>	<b>60 2.14 in 2024</b>
72.3 in 1985	72.3 in 1985		
72.3 in 1938	72.3 in 1938		
72.3 in 1917	72.3 in 1917		

Normal Temperature for April at LLDF1 = 73.2°

Normal Rainfall for April at LLDF1 = 2.82 in.

---

**WINTER HAVEN AREA** (records began in March 1941):

Warmest Aprils	Coolest Aprils	Wettest Aprils	Driest Aprils
1 78.6 in 2015	1 67.0 in 1987	1 7.36 in 1951	1 0.00 in 1981
2 77.8 in 1947	2 68.5 in 1983	2 7.29 in 1941	0.00 in 1967
3 77.5 in 1991	68.5 in 1973	3 6.51 in 2008	3 0.18 in 1963
4 77.1 in 1945	4 69.0 in 1961	4 6.34 in 1957	4 0.28 in 1946
5 76.6 in 2002	5 69.1 in 1971	5 5.55 in 1947	5 0.46 in 1952
6 76.3 in 2011	6 69.7 in 2005	6 5.30 in 1960	6 0.51 in 2017
7 76.2 in 2023	69.7 in 1962	7 5.11 in 1997	7 0.56 in 2001
8 76.0 in 2020	8 69.9 in 1993	8 5.01 in 1959	8 0.61 in 1978
9 75.8 in 1994	9 70.0 in 1951	9 4.42 in 2018	9 0.62 in 1968
10 75.7 in 1948	10 70.1 in 2004	4.42 in 1991	10 0.64 in 1986
...	...	...	...
<b>29 73.4 in 2024</b>	<b>40 73.4 in 2024</b>	<b>42 1.84 in 2024</b>	<b>42 1.84 in 2024</b>
73.4 in 2016	73.4 in 2016		
73.4 in 1990	73.4 in 1990		
73.4 in 1968	73.4 in 1968		

Normal Temperature for April at GIF = 73.8°

Normal Rainfall for April at GIF = 2.50 in.



**BARTOW** (records began in June 1892):

Warmest Aprils	Coolest Aprils	Wettest Aprils	Driest Aprils
1 78.7 in 1908	1 65.9 in 1926	1 9.70 in 1920	1 0.00 in 1967
2 77.2 in 1945	2 66.3 in 1901	2 8.40 in 1951	2 Trace in 2000
3 76.1 in 1991	3 66.9 in 1915	3 6.89 in 1941	Trace in 1907
4 76.0 in 1999	4 67.3 in 1928	4 6.69 in 1934	4 0.04 in 1922
76.0 in 1947	5 68.0 in 1913	5 6.43 in 1937	5 0.11 in 1981
76.0 in 1922	6 68.1 in 1987	6 6.14 in 1935	6 0.17 in 1938
7 75.9 in 2023	7 68.4 in 1950	7 6.12 in 1954	7 0.20 in 1987
75.9 in 2014	68.4 in 1931	6.12 in 1895	8 0.21 in 2006
9 75.7 in 1965	9 68.8 in 1952	9 5.94 in 1933	9 0.28 in 2001
10 75.6 in 2002	10 68.9 in 1937	10 5.87 in 1991	10 0.34 in 1919
75.6 in 1954		...	...
...	...	<b>87 1.55 in 2024</b>	<b>45 1.55 in 2024</b>
<b>82 71.1 in 2024</b>	<b>36 71.1 in 2024</b>		
71.1 in 1977	71.1 in 1977		
71.1 in 1932	71.1 in 1932		

Normal Temperature for April at BARF1 = 72.5°

Normal Rainfall for April at BARF1 = 2.72 in.

---

**SARASOTA-BRADENTON AREA** (records began in January 1911):

Warmest Aprils	Coolest Aprils	Wettest Aprils	Driest Aprils
1 76.2 in 2023	1 65.9 in 1987	1 10.23 in 1957	1 0.00 in 1967
2 75.9 in 2015	2 67.0 in 1916	2 9.82 in 1920	2 Trace in 2017
75.9 in 1945	3 67.1 in 1915	3 8.78 in 1997	3 0.01 in 1923
4 75.2 in 2020	4 67.5 in 1931	4 7.36 in 2020	4 0.03 in 1981
5 75.1 in 1994	5 67.8 in 1986	5 7.22 in 1933	5 0.08 in 1963
6 75.0 in 2017	6 68.3 in 2005	6 7.09 in 1951	6 0.10 in 1998
7 74.9 in 1947	68.3 in 1950	7 5.55 in 1930	7 0.10 in 1922
8 74.6 in 2002	8 68.4 in 1993	8 5.11 in 1953	8 0.14 in 2006
9 74.5 in 2022	9 68.5 in 1971	9 4.87 in 1916	0.14 in 2001
74.5 in 1954	68.5 in 1940	10 4.85 in 1960	10 0.15 in 1938
...	...	...	...
<b>38 72.2 in 2024</b>	<b>73 72.2 in 2024</b>	<b>81 1.06 in 2024</b>	<b>34 1.06 in 2024</b>
72.2 in 1955	72.2 in 1955		

Normal Temperature for April at SRQ = 72.6°

Normal Rainfall for April at SRQ = 2.46 in.

**VENICE** (records began in May 1955):

Warmest Aprils	Coolest Aprils	Wettest Aprils	Driest Aprils
1 76.9 in 2015	1 65.5 in 1987	1 13.85 in 1957	1 0.00 in 1967
2 76.6 in 2023	2 68.0 in 1986	2 7.86 in 1997	2 0.06 in 1975
3 76.2 in 2011	3 68.5 in 1993	3 6.10 in 1962	3 0.07 in 1987
4 76.1 in 1994	4 68.6 in 2005	4 5.20 in 1993	0.07 in 1978
5 75.9 in 2013	5 68.8 in 1983	5 5.18 in 1984	5 0.09 in 1963
6 75.5 in 2002	68.8 in 1962	6 5.09 in 1991	6 0.15 in 2006
7 75.0 in 2020	7 69.0 in 1988	7 4.51 in 2013	7 0.16 in 2001
8 74.5 in 2017	8 69.3 in 1984	4.51 in 1982	8 0.17 in 1970
74.5 in 1999	9 69.4 in 2007	9 4.12 in 1966	9 0.18 in 1999
10 74.4 in 2012	10 69.6 in 1956	10 4.01 in 2004	10 0.24 in 1972
...	...	...	...
<b>26 72.8 in 2024</b>	<b>41 72.8 in 2024</b>	<b>36 1.52 in 2024</b>	<b>34 1.52 in 2024</b>

Normal Temperature for April at VNCF1 = 72.5°

Normal Rainfall for April at VNCF1 = 2.47 in.

---

**MYAKKA RIVER STATE PARK** (Temperature records began in March 1956  
and Rainfall records began in Sep 1943):

Warmest Aprils	Coolest Aprils	Wettest Aprils	Driest Aprils
1 77.0 in 2015	1 66.5 in 1987	1 8.93 in 1997	1 0.00 in 2001
2 76.0 in 1999	2 67.8 in 1962	2 7.85 in 1993	2 Trace in 1981
3 75.7 in 1994	3 68.0 in 1961	3 7.10 in 1954	3 0.02 in 1987
4 74.9 in 2023	4 68.3 in 2005	4 7.02 in 1948	4 0.04 in 1946
5 74.8 in 1982	5 68.4 in 1986	5 6.82 in 1957	5 0.10 in 2006
6 74.7 in 2013	6 68.7 in 1973	6 6.54 in 2020	6 0.12 in 1970
74.7 in 2011	7 69.2 in 2004	7 6.22 in 1951	7 0.15 in 1978
74.7 in 1981	8 69.3 in 1971	8 5.58 in 1995	8 0.20 in 1998
9 74.4 in 2002	9 69.7 in 1983	9 5.17 in 2008	9 0.33 in 1971
74.4 in 1970	<b>10 69.8 in 2024</b>	10 5.05 in 1982	10 0.43 in 1950
		...	...
		<b>51 1.28 in 2024</b>	<b>28 1.28 in 2024</b>

Normal Temperature for April at MKCF1 = 72.5°

Normal Rainfall for April at MKCF1 = 2.98 in.

**WAUCHULA 2 N** (records began in January 1933):

Warmest Aprils	Coolest Aprils	Wettest Aprils	Driest Aprils
1 77.2 in 1945	1 65.7 in 1950	1 8.26 in 1951	1 0.00 in 2001
2 76.3 in 1947	2 66.7 in 1993	2 7.75 in 1947	0.00 in 1978
3 75.6 in 2023	66.7 in 1987	3 6.94 in 1962	0.00 in 1967
4 75.4 in 2015	4 66.8 in 2004	4 6.60 in 1995	4 0.03 in 1963
5 74.8 in 1968	5 67.6 in 1983	5 6.55 in 1953	5 0.05 in 1971
6 74.7 in 1991	6 67.9 in 1952	6 6.44 in 1992	6 0.08 in 1981
7 74.5 in 1970	7 68.1 in 1951	7 6.36 in 1934	7 0.13 in 1970
8 74.4 in 1975	8 68.3 in 2000	8 6.16 in 2021	8 0.16 in 1987
9 74.2 in 1965	9 68.5 in 2007	9 5.95 in 1997	9 0.22 in 1945
10 74.1 in 2020	68.5 in 1997	10 5.44 in 1933	10 0.23 in 1975
74.1 in 1982	...		...
74.1 in 1939	<b>21 70.2 in 2024</b>		<b>21 1.14 in 2024</b>

Normal Temperature for April at WAUF1 = 71.0°

Normal Rainfall for April at WAUF1 = 2.92 in.

-----

**ARCHBOLD BIO STN** (records began in January 1969):

Warmest Aprils	Coolest Aprils	Wettest Aprils	Driest Aprils
1 76.6 in 2015	1 63.0 in 1987	1 9.53 in 2021	1 0.03 in 2006
2 75.0 in 2023	2 66.4 in 1986	2 5.90 in 1972	2 0.08 in 1971
75.0 in 2020	3 66.7 in 2004	3 5.65 in 2015	3 0.16 in 1981
4 74.8 in 1991	4 66.9 in 1993	4 5.64 in 2023	4 0.19 in 1970
5 74.4 in 2011	5 67.4 in 2005	5 5.47 in 1997	5 0.21 in 1986
6 74.1 in 1994	67.4 in 1983	6 5.37 in 2013	6 0.42 in 2016
7 73.7 in 1982	7 67.7 in 2000	7 4.91 in 1992	7 0.43 in 1978
8 73.5 in 1975	8 68.6 in 1971	8 4.90 in 1973	8 0.52 in 1987
9 73.4 in 2013	9 68.7 in 1992	9 4.15 in 1982	9 0.59 in 2009
10 73.1 in 2017	10 68.8 in 2007	10 4.10 in 2004	<b>10 0.62 in 2024</b>
	68.8 in 1984		
	12 68.9 in 1988		
	13 69.1 in 1973		
	14 69.6 in 1998		
	69.6 in 1996		
	<b>16 69.7 in 2024</b>		

Normal Temperature for April at ACHF1 = 71.7°

Normal Rainfall for April at ACHF1 = 2.54 in.

**PUNTA GORDA AREA** (records began in May 1914):

Warmest Aprils	Coolest Aprils	Wettest Aprils	Driest Aprils
1 78.7 in 1945	1 67.9 in 1987	1 8.70 in 1920	1 0.00 in 1981
2 78.2 in 1947	2 68.7 in 1915	2 7.93 in 1957	0.00 in 1963
3 76.9 in 1944	3 69.1 in 2004	3 7.08 in 1931	0.00 in 1946
4 76.6 in 2023	69.1 in 1916	4 6.07 in 2023	4 Trace in 1975
76.6 in 2015	5 69.2 in 2005	5 5.80 in 1994	Trace in 1967
76.6 in 1994	6 69.7 in 1971	6 5.52 in 1941	6 0.03 in 1922
7 76.1 in 1954	7 70.0 in 1993	7 5.36 in 1947	7 0.05 in 2006
8 76.0 in 1991	70.0 in 1986	8 5.20 in 1933	8 0.09 in 1970
76.0 in 1946	9 70.1 in 2000	9 5.15 in 1997	9 0.10 in 2001
10 75.9 in 1948	10 70.2 in 1950	10 5.08 in 1965	10 0.11 in 1987
...	...	5.08 in 1948	...
<b>35 73.8 in 2024</b>	<b>70 73.8 in 2024</b>	...	...
73.8 in 1995	73.8 in 1995	<b>76 0.75 in 2024</b>	<b>29 0.75 in 2024</b>
		0.75 in 1969	0.75 in 1969

Normal Temperature for April at PGD = 73.1°

Normal Rainfall for April at PGD = 2.23 in.

-----  
**FORT MYERS AREA** (records began in January 1902):

Warmest Aprils	Coolest Aprils	Wettest Aprils	Driest Aprils
1 79.2 in 2020	1 68.5 in 1950	1 8.42 in 1939	1 Trace in 1970
2 79.0 in 2023	2 68.8 in 1987	2 7.66 in 1941	Trace in 1967
3 78.8 in 2015	3 69.3 in 1915	3 6.06 in 1933	Trace in 1903
4 77.7 in 2011	4 69.6 in 1903	4 5.89 in 1930	4 0.01 in 2006
77.7 in 1991	5 70.1 in 1983	5 5.83 in 2022	0.01 in 1946
77.7 in 1947	70.1 in 1910	6 5.68 in 1994	6 0.02 in 1922
7 77.5 in 2022	7 70.2 in 1952	7 5.61 in 1916	7 0.08 in 1981
8 77.4 in 1994	8 70.4 in 1971	8 5.50 in 1949	0.08 in 1950
9 77.3 in 1908	9 70.6 in 1931	9 5.34 in 1995	9 0.11 in 1974
10 76.9 in 2018	10 70.8 in 2005	10 5.01 in 1991	10 0.14 in 1987
76.9 in 2013	70.8 in 1993	...	...
76.9 in 2002	70.8 in 1961	<b>85 0.87 in 2024</b>	<b>39 0.87 in 2024</b>
76.9 in 1945	70.8 in 1907		
	70.8 in 1902		
...	...		
<b>43 74.6 in 2024</b>	<b>80 74.6 in 2024</b>		
74.6 in 1974	74.6 in 1974		

Normal Temperature for April at FMY = 74.8°

Normal Rainfall for April at FMY = 2.44 in.

-----  
For more Climate information visit our web site at the following link:  
<https://www.weather.gov/tampabay> and then go to the Climate and Past  
Weather drop down menu above the graphical forecast images.