



NOAA - National Weather Service

Tampa Bay Area

2525 14th Avenue SE, Ruskin, Florida 33570

813-645-2323 <https://weather.gov/tampabay>

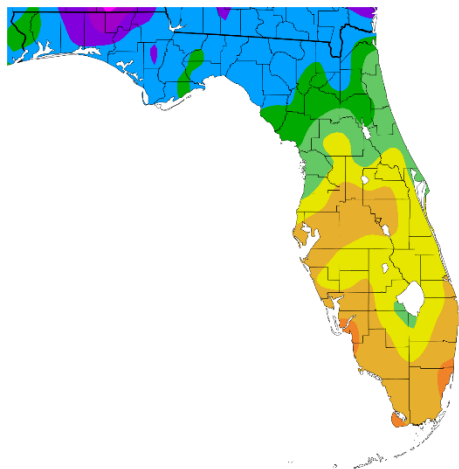
April 2023 Climate Summary for West Central and Southwest Florida

Temperatures averaged about 2 to 5 degrees Fahrenheit above normal in April with numerous sites ending up in the Top Ten Warmest for April.

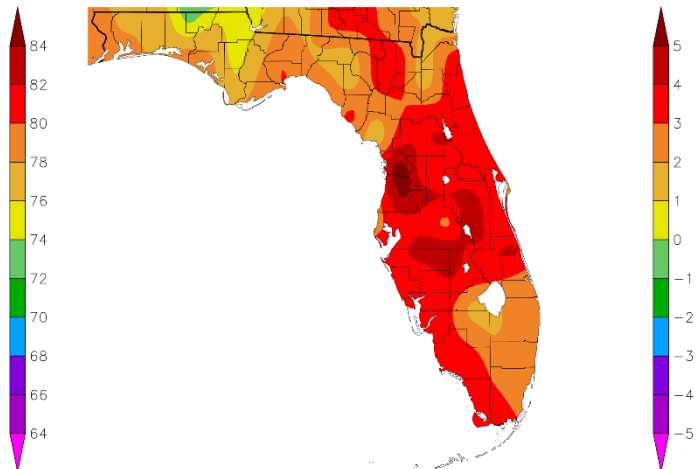
APRIL TEMPERATURE RANKINGS (°F):

Location	Rank	April 2023 Avg Temp	Normal Apr Temp	Dep fm Normal	Records Began
Fort Myers Area	2nd Warmest	79.0°	74.8°	+5.2°	Jan 1902
Plant City	1st Warmest	77.9°	73.5°	+4.4°	Sep 1892
St Petersburg Area	2nd Warmest	77.2°	74.1°	+3.1°	Aug 1914
Lakeland Area	2nd Warmest	77.0°	73.2°	+3.8°	Jan 1915
Tampa Area	3rd Warmest	77.0°	73.9°	+3.1°	Apr 1890
Venice	2nd Warmest	76.6°	72.5°	+4.1°	May 1955
Punta Gorda Area	4th Warmest (tie)	76.6°	73.1°	+3.5°	May 1914
Sarasota-Bradenton Area	1st Warmest	76.2°	72.6°	+3.6°	Jan 1911
Winter Haven Area	7th Warmest	76.2°	73.8°	+2.4°	Mar 1941
Bartow	7th Warmest (tie)	75.9°	72.5°	+3.4°	Jun 1892
Wauchula 2 N	3rd Warmest	75.6°	71.0°	+4.6°	Jan 1933
Archbold Bio Stn	2nd Warmest (tie)	75.0°	71.7°	+3.3°	Jan 1969
Myakka River State Pk	4th Warmest	74.9°	72.5°	+2.4°	Mar 1956
St. Leo	8th Warmest (tie)	74.9°	71.4°	+3.5°	Apr 1895
Inverness 3 SE	5th Warmest	74.2°	68.5°	+5.7°	Jul 1948
Tarpon Springs	18th Warmest	74.2°	72.2°	+2.0°	Jan 1892
Brooksville Area	7th Warmest	74.3°	69.2°	+5.1°	Jan 1892
Chiefland 5 ESE	18th Warmest	70.0°	68.4°	+1.6°	Jul 1956

Temperature (F)
4/1/2023 - 4/30/2023



Departure from Normal Temperature (F)
4/1/2023 - 4/30/2023

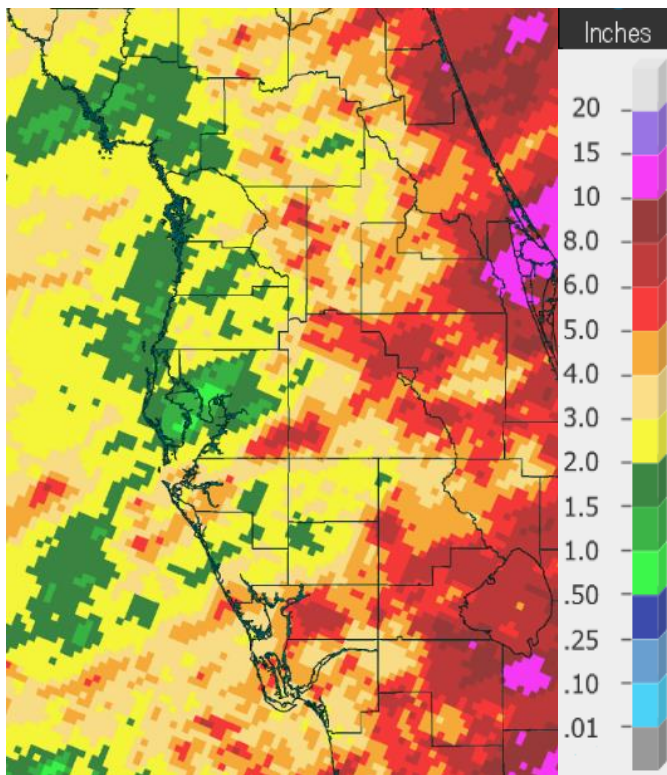


Graphics Source: NOAA Regional Climate Centers

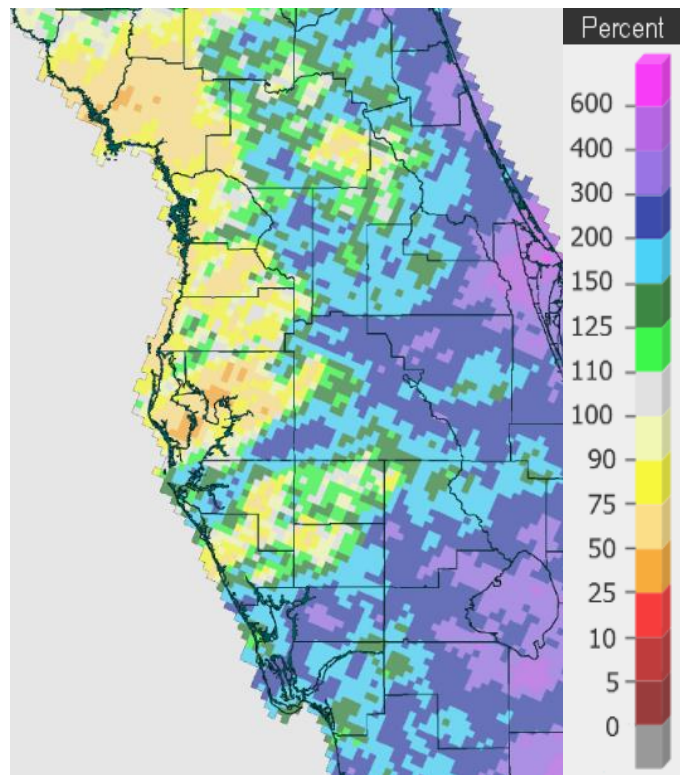
As far as rainfall, April is usually one of the drier months of the year, and in areas from around Tampa Bay north across the Nature Coast this was true. However, we did see a couple of cold fronts along with a few upper-level disturbances that brought some decent showers and thunderstorms to the eastern half of the Florida peninsula and southwest Florida.

APRIL RAINFALL (inches):

Location	Rank	April 2023 Rain Total	Normal Apr Rain	Dep fm Normal	Records Began
Punta Gorda Area	4th Wettest	6.07	2.23	+3.84	May 1914
Archbold Bio Stn	4th Wettest	5.64	2.54	+3.10	Jan 1969
Bartow	28th Wettest	4.24	2.72	+1.52	Jun 1892
Plant City	28th Wettest	4.04	2.88	+1.16	Jan 1893
Fort Myers Area	18th Wettest	3.99	2.44	+1.55	Jan 1902
Sarasota-Bradenton Area	23rd Wettest	3.63	2.46	+1.17	Jan 1911
Winter Haven Area	25th Wettest	2.87	2.50	+0.37	Mar 1941
St. Leo	79th Driest	2.86	3.06	-0.20	Apr 1895
Venice	39th Driest	2.11	2.47	-0.36	May 1955
Chiefland 5 ESE	29th Driest	2.09	2.97	-0.88	Jul 1956
Inverness 3 SE	27th Driest	1.59	2.69	-1.10	Jul 1948
Brooksville Area	45th Driest	1.56	2.18	-0.62	Jan 1892
Myakka River State Pk	32nd Driest	1.56	2.98	-1.42	Sep 1943
Wauchula 2 N	25th Driest	1.38	2.92	-1.54	Jan 1933
Lakeland Area	30th Driest	1.22	2.82	-1.60	Jan 1915
Tarpon Springs	44th Driest (tie)	1.22	2.69	-1.47	Jan 1892
Tampa Area	36th Driest	0.88	2.55	-1.67	Apr 1890
St. Petersburg Area	28th Driest	0.72	1.93	-1.21	Aug 1914



April 2023 Rainfall



Percent of Normal Rain

On the following pages are tables of the top ten warmest, coolest, wettest, and driest Aprils at some official NWS locations, which includes the average/total so far for this April where available, and the 1991-2020 average temperature and rainfall for the month of April.

CHIEFLAND 5 ESE (records began in July 1956):

Warmest Aprils	Coolest Aprils	Wettest Aprils	Driest Aprils
1 73.0 in 1991	1 63.4 in 1961	1 14.61 in 1982	1 0.00 in 1967
2 72.5 in 2002	2 64.8 in 2005	2 8.46 in 1997	2 0.30 in 1963
3 72.2 in 1999	3 64.9 in 2004	3 7.39 in 1995	3 0.31 in 1969
4 71.8 in 1970	4 65.0 in 1962	4 7.16 in 1985	4 0.42 in 2016
5 71.5 in 2020	5 65.3 in 1993	5 7.13 in 1991	5 0.79 in 1989
6 71.3 in 2017	6 65.5 in 2000	6 6.65 in 1957	6 0.80 in 2000
71.3 in 2011	7 65.6 in 2007	7 6.48 in 1983	7 0.88 in 2001
8 71.2 in 1911	8 66.4 in 1966	8 6.22 in 2005	0.88 in 1998
71.2 in 1965	9 66.6 in 1984	9 6.20 in 1961	9 0.91 in 1993
10 70.9 in 1994	10 66.9 in 1986	10 6.12 in 1979	0.91 in 1981
...	
18 70.0 in 2023		37 2.09 in 2023	29 2.09 in 2023

Normal Temperature for April at CHIF1 = 68.4°
 Normal Rainfall for April at CHIF1 = 2.97 in.

INVERNESS 3 SE (records began in July 1948):

Warmest Aprils	Coolest Aprils	Wettest Aprils	Driest Aprils
1 75.5 in 1954	1 64.8 in 1993	1 7.88 in 1953	1 0.00 in 1967
2 74.9 in 2015	2 66.1 in 2004	2 5.89 in 1991	2 0.06 in 2001
3 74.5 in 1968	3 66.2 in 2000	3 5.76 in 2011	3 0.07 in 1998
4 74.3 in 1967	4 66.3 in 2007	4 5.52 in 2021	4 0.20 in 1978
5 74.2 in 2023	5 66.4 in 1996	5 5.49 in 2022	5 0.26 in 1987
6 74.1 in 1965	6 66.8 in 2003	6 5.20 in 1997	6 0.31 in 1977
7 74.0 in 1970	66.8 in 1992	7 5.15 in 1959	0.31 in 1974
8 73.5 in 2002	8 67.1 in 1998	8 5.01 in 2018	8 0.65 in 1999
9 73.1 in 1969	9 67.3 in 1988	9 5.00 in 1982	9 0.73 in 1968
73.1 in 1963	10 67.4 in 1950	10 4.89 in 1984	10 0.76 in 1981
	
		49 1.59 in 2023	27 1.59 in 2023

Normal Temperature for April at INVF1 = 68.5°
 Normal Rainfall for April at INVF1 = 2.69 in.

BROOKSVILLE AREA (records began in January 1892):

Warmest Aprils	Coolest Aprils	Wettest Aprils	Driest Aprils
1 75.5 in 1947	1 64.3 in 2005	1 14.49 in 1928	1 Trace in 2017
75.5 in 1945	64.3 in 2004	2 8.05 in 1900	Trace in 1967
75.5 in 1929	3 64.8 in 1901	3 7.54 in 1935	3 0.04 in 2001
4 75.2 in 2015	4 65.3 in 2000	4 7.41 in 1949	4 0.10 in 1903
5 74.5 in 1927	5 66.8 in 2007	5 7.38 in 1991	5 0.16 in 1977
6 74.4 in 1994	6 67.1 in 1950	6 6.92 in 1953	6 0.20 in 1981
7 74.3 in 2023	7 67.3 in 1892	7 6.48 in 1937	7 0.21 in 1932
8 74.0 in 1909	8 67.5 in 1998	8 6.39 in 1918	8 0.25 in 2006
9 73.9 in 2020	9 67.6 in 1926	9 6.33 in 1982	9 0.26 in 1998
10 73.8 in 1981	10 67.7 in 1952	10 6.20 in 1926	10 0.32 in 1896
	
		85 1.56 in 2023	45 1.56 in 2023

Normal Temperature for April at BKV = 69.2°

Normal Rainfall for April at BKV = 2.18 in.

ST. LEO (records began in April 1895):

Warmest Aprils	Coolest Aprils	Wettest Aprils	Driest Aprils
1 76.8 in 1908	1 66.4 in 1931	1 15.55 in 1953	1 Trace in 1967
2 76.0 in 1954	2 66.7 in 1987	2 11.22 in 1928	2 0.06 in 1981
76.0 in 1947	66.7 in 1928	3 7.41 in 1937	0.06 in 1922
4 75.7 in 1945	4 67.7 in 1950	4 7.02 in 1997	4 0.09 in 2001
5 75.5 in 2015	67.7 in 1915	5 6.86 in 1991	5 0.11 in 1903
6 75.4 in 2002	67.7 in 1901	6 6.75 in 1949	6 0.12 in 1963
7 75.3 in 1994	7 68.0 in 1903	6.75 in 1941	7 0.13 in 2017
8 74.9 in 2023	8 68.4 in 1916	8 6.61 in 2018	8 0.20 in 1911
74.9 in 1991	9 68.6 in 1993	9 6.33 in 1895	9 0.21 in 1998
10 74.6 in 2006	10 68.7 in 1913	10 6.32 in 2020	10 0.23 in 1896
74.6 in 1999	
		50 2.86 in 2023	79 2.86 in 2023

Normal Temperature for April at STLF1 = 71.4°

Normal Rainfall for April at STLF1 = 3.06 in.

TARPON SPRINGS (records began in January 1892):

Warmest Aprils	Coolest Aprils	Wettest Aprils	Driest Aprils
1 76.5 in 2015	1 65.7 in 1987	1 7.63 in 1931	1 0.00 in 1967
2 76.4 in 1947	2 67.1 in 1915	2 7.20 in 1942	2 Trace in 1896
3 76.0 in 1991	3 67.2 in 1962	3 6.97 in 1949	3 0.05 in 1922
4 75.3 in 1945	4 67.4 in 1950	4 6.66 in 1928	4 0.07 in 1981
5 75.1 in 1994	67.4 in 1940	5 6.31 in 1953	0.07 in 1972
6 75.0 in 2020	6 67.5 in 1903	6 6.01 in 1957	6 0.08 in 1923
7 74.9 in 1948	7 67.8 in 1916	7 6.00 in 2020	7 0.16 in 1998
8 74.8 in 1922	8 67.9 in 1971	8 5.97 in 1933	8 0.18 in 1903
74.8 in 1912	67.9 in 1961	9 5.90 in 1959	9 0.20 in 2017
10 74.7 in 2002	67.9 in 1910	10 5.70 in 1941	10 0.23 in 1910
74.7 in 1929	
12 74.6 in 2017		85 1.22 in 2023	44 1.22 in 2023
74.6 in 1954		1.22 in 1962	1.22 in 1962
74.6 in 1908		1.22 in 1919	1.22 in 1919
15 74.5 in 1927			
16 74.4 in 1911			
17 74.3 in 2011			
18 74.2 in 2023			

Normal Temperature for April at TRPF1 = 72.2°

Normal Rainfall for April at TRPF1 = 2.69 in.

TAMPA AREA (records began in April 1890):

Warmest Aprils	Coolest Aprils	Wettest Aprils	Driest Aprils
1 78.0 in 2015	1 66.3 in 1987	1 10.71 in 1997	1 Trace in 1981
2 77.1 in 2017	2 66.7 in 1901	2 8.04 in 1920	Trace in 1967
3 77.0 in 2023	3 67.2 in 1993	3 7.23 in 1931	3 0.02 in 2001
4 76.9 in 2022	4 67.7 in 1950	4 6.76 in 2022	4 0.05 in 1969
5 76.8 in 1991	5 68.1 in 1903	5 6.73 in 2020	5 0.16 in 1922
6 76.6 in 1947	6 68.2 in 1899	6 6.59 in 1957	0.16 in 1898
7 76.4 in 1908	7 68.6 in 1983	7 6.14 in 1933	7 0.21 in 1963
8 76.3 in 2011	68.6 in 1961	8 5.75 in 1926	8 0.31 in 1892
76.3 in 2002	68.6 in 1915	9 5.48 in 1959	9 0.35 in 1938
10 76.0 in 1945	68.6 in 1891	10 5.38 in 1895	10 0.37 in 1946
	
		99 0.88 in 2023	36 0.88 in 2023

Normal Temperature for April at TPA = 73.9°

Normal Rainfall for April at TRA = 2.55 in.

ST. PETERSBURG (records began in August 1914):

Warmest Aprils	Coolest Aprils	Wettest Aprils	Driest Aprils
1 78.6 in 2015	1 68.5 in 1950	1 9.73 in 1997	1 0.00 in 1967
2 77.2 in 2023	2 68.7 in 1987	2 9.09 in 1920	2 Trace in 1981
3 77.0 in 2011	3 68.9 in 1993	3 8.45 in 1951	3 0.01 in 1974
77.0 in 1947	4 69.2 in 1952	4 7.69 in 1933	4 0.04 in 2001
5 76.9 in 2002	5 69.3 in 1983	5 7.39 in 1957	5 0.07 in 1987
6 76.6 in 1991	6 70.1 in 1916	6 7.20 in 2003	6 0.11 in 1998
7 76.5 in 2020	7 70.2 in 1915	7 6.16 in 1960	7 0.24 in 1932
76.5 in 2013	8 70.4 in 1951	8 6.09 in 1948	8 0.25 in 1977
9 76.1 in 1929	9 70.6 in 1931	9 5.81 in 1931	9 0.27 in 2006
10 76.0 in 1981	10 70.8 in 1996	10 5.46 in 1941	0.27 in 1963
76.0 in 1954	70.8 in 1961
76.0 in 1922		82 0.72 in 2023	28 0.72 in 2023

Normal Temperature for April at SPG = 74.1°

Normal Rainfall for April at SPG = 1.93 in.

PLANT CITY (Temperature records began in Sep 1892 and
Rainfall records began in Jan 1893):

Warmest Aprils	Coolest Aprils	Wettest Aprils	Driest Aprils
1 77.9 in 2023	1 65.0 in 1901	1 7.29 in 1931	1 0.00 in 2001
2 77.2 in 2020	2 65.5 in 1987	2 7.13 in 1957	0.00 in 1981
3 76.9 in 2015	3 65.9 in 1931	3 7.11 in 1933	0.00 in 1967
4 76.1 in 1947	4 67.4 in 1932	4 6.56 in 1928	4 0.16 in 1987
5 75.9 in 1912	5 67.6 in 1983	5 6.53 in 1941	5 0.20 in 1923
6 75.8 in 1911	67.6 in 1902	6 6.40 in 1937	0.20 in 1911
7 75.7 in 1945	7 67.7 in 2005	7 6.36 in 1947	7 0.26 in 1938
8 75.6 in 2011	8 67.9 in 1993	8 6.06 in 1997	8 0.27 in 1963
9 75.5 in 1991	9 68.0 in 1940	9 6.00 in 1951	9 0.31 in 1977
10 75.3 in 2017	10 68.2 in 1925	10 5.78 in 1959	10 0.32 in 1898
	
		28 4.04 in 2023	98 4.04 in 2023

Normal Temperature for April at PLCF1 = 73.5°

Normal Rainfall for April at PLCF1 = 2.88 in.

LAKELAND AREA (records began in January 1915):

Warmest Aprils	Coolest Aprils	Wettest Aprils	Driest Aprils
1 77.2 in 2015	1 67.3 in 1950	1 8.48 in 1959	1 0.00 in 1967
2 77.0 in 2023	2 68.3 in 2005	2 8.36 in 1939	2 0.04 in 2001
3 76.6 in 2020	68.3 in 1952	3 8.35 in 1934	3 0.05 in 1963
4 76.5 in 1991	4 68.5 in 1987	4 8.15 in 1951	4 0.09 in 1981
5 76.3 in 1994	5 68.6 in 1961	5 7.71 in 1928	5 0.22 in 1977
6 76.2 in 1922	68.6 in 1951	6 6.84 in 1997	6 0.25 in 1922
7 76.1 in 2011	7 68.7 in 2007	7 6.77 in 1957	7 0.42 in 1972
8 75.8 in 1947	8 68.9 in 1973	8 6.66 in 1920	0.42 in 1969
9 75.6 in 1945	9 69.0 in 1983	9 5.82 in 1926	9 0.43 in 1932
10 75.4 in 1929	10 69.5 in 1931	10 5.60 in 1941	10 0.44 in 1945
	69.5 in 1915
		79 1.22 in 2023	30 1.22 in 2023

Normal Temperature for April at LLDF1 = 73.2°

Normal Rainfall for April at LLDF1 = 2.82 in.

WINTER HAVEN AREA (records began in March 1941):

Warmest Aprils	Coolest Aprils	Wettest Aprils	Driest Aprils
1 78.6 in 2015	1 67.0 in 1987	1 7.36 in 1951	1 0.00 in 1981
2 77.8 in 1947	2 68.5 in 1983	2 7.29 in 1941	0.00 in 1967
3 77.5 in 1991	68.5 in 1973	3 6.51 in 2008	3 0.18 in 1963
4 77.1 in 1945	4 69.0 in 1961	4 6.34 in 1957	4 0.28 in 1946
5 76.6 in 2002	5 69.1 in 1971	5 5.55 in 1947	5 0.46 in 1952
6 76.3 in 2011	6 69.7 in 2005	6 5.30 in 1960	6 0.51 in 2017
7 76.2 in 2023	69.7 in 1962	7 5.11 in 1997	7 0.56 in 2001
8 76.0 in 2020	8 69.9 in 1993	8 5.01 in 1959	8 0.61 in 1978
9 75.8 in 1994	9 70.0 in 1951	9 4.42 in 2018	9 0.62 in 1968
10 75.7 in 1948	10 70.1 in 2004	4.42 in 1991	10 0.64 in 1986
	
		25 2.87 in 2023	55 2.87 in 2023

Normal Temperature for April at GIF = 73.8°

Normal Rainfall for April at GIF = 2.50 in.

BARTOW (records began in June 1892):

Warmest Aprils	Coolest Aprils	Wettest Aprils	Driest Aprils
1 78.7 in 1908	1 65.9 in 1926	1 9.70 in 1920	1 0.00 in 1967
2 77.2 in 1945	2 66.3 in 1901	2 8.40 in 1951	2 Trace in 2000
3 76.1 in 1991	3 66.9 in 1915	3 6.89 in 1941	Trace in 1907
4 76.0 in 1999	4 67.3 in 1928	4 6.69 in 1934	4 0.04 in 1922
76.0 in 1947	5 68.0 in 1913	5 6.43 in 1937	5 0.11 in 1981
76.0 in 1922	6 68.1 in 1987	6 6.14 in 1935	6 0.17 in 1938
7 75.9 in 2023	7 68.4 in 1950	7 6.12 in 1954	7 0.20 in 1987
75.9 in 2014	68.4 in 1931	6.12 in 1895	8 0.21 in 2006
9 75.7 in 1965	9 68.8 in 1952	9 5.94 in 1933	9 0.28 in 2001
10 75.6 in 2002	10 68.9 in 1937	10 5.87 in 1991	10 0.34 in 1919
75.6 in 1954	
		28 4.24 in 2023	103 4.24 in 2023

Normal Temperature for April at BARF1 = 72.5°

Normal Rainfall for April at BARF1 = 2.72 in.

SARASOTA-BRADENTON AREA (records began in January 1911):

Warmest Aprils	Coolest Aprils	Wettest Aprils	Driest Aprils
1 76.2 in 2023	1 65.9 in 1987	1 10.23 in 1957	1 0.00 in 1967
2 75.9 in 2015	2 67.0 in 1916	2 9.82 in 1920	2 Trace in 2017
75.9 in 1945	3 67.1 in 1915	3 8.78 in 1997	3 0.01 in 1923
4 75.2 in 2020	4 67.5 in 1931	4 7.36 in 2020	4 0.03 in 1981
5 75.1 in 1994	5 67.8 in 1986	5 7.22 in 1933	5 0.08 in 1963
6 75.0 in 2017	6 68.3 in 2005	6 7.09 in 1951	6 0.10 in 1998
7 74.9 in 1947	68.3 in 1950	7 5.55 in 1930	7 0.10 in 1922
8 74.6 in 2002	8 68.4 in 1993	8 5.11 in 1953	8 0.14 in 2006
9 74.5 in 2022	9 68.5 in 1971	9 4.87 in 1916	0.14 in 2001
74.5 in 1954	68.5 in 1940	10 4.85 in 1960	10 0.15 in 1938
	
		23 3.63 in 2023	91 3.63 in 2023

Normal Temperature for April at SRQ = 72.6°

Normal Rainfall for April at SRQ = 2.46 in.

VENICE (records began in May 1955):

Warmest Aprils	Coolest Aprils	Wettest Aprils	Driest Aprils
1 76.9 in 2015	1 65.5 in 1987	1 13.85 in 1957	1 0.00 in 1967
2 76.6 in 2023	2 68.0 in 1986	2 7.86 in 1997	2 0.06 in 1975
3 76.2 in 2011	3 68.5 in 1993	3 6.10 in 1962	3 0.07 in 1987
4 76.1 in 1994	4 68.6 in 2005	4 5.20 in 1993	0.07 in 1978
5 75.9 in 2013	5 68.8 in 1983	5 5.18 in 1984	5 0.09 in 1963
6 75.5 in 2002	68.8 in 1962	6 5.09 in 1991	6 0.15 in 2006
7 75.0 in 2020	7 69.0 in 1988	7 4.51 in 2013	7 0.16 in 2001
8 74.5 in 2017	8 69.3 in 1984	4.51 in 1982	8 0.17 in 1970
74.5 in 1999	9 69.4 in 2007	9 4.12 in 1966	9 0.18 in 1999
10 74.4 in 2012	10 69.6 in 1956	10 4.01 in 2004	10 0.24 in 1972
	
		30 2.11 in 2023	39 2.11 in 2023

Normal Temperature for April at VNCF1 = 72.5°

Normal Rainfall for April at VNCF1 = 2.47 in.

MYAKKA RIVER STATE PARK (Temperature records began in March 1956
and Rainfall records began in Sep 1943):

Warmest Aprils	Coolest Aprils	Wettest Aprils	Driest Aprils
1 77.0 in 2015	1 66.5 in 1987	1 8.93 in 1997	1 0.00 in 2001
2 76.0 in 1999	2 67.8 in 1962	2 7.85 in 1993	2 Trace in 1981
3 75.7 in 1994	3 68.0 in 1961	3 7.10 in 1954	3 0.02 in 1987
4 74.9 in 2023	4 68.3 in 2005	4 7.02 in 1948	4 0.04 in 1946
5 74.8 in 1982	5 68.4 in 1986	5 6.82 in 1957	5 0.10 in 2006
6 74.7 in 2013	6 68.7 in 1973	6 6.54 in 2020	6 0.12 in 1970
74.7 in 2011	7 69.2 in 2004	7 6.22 in 1951	7 0.15 in 1978
74.7 in 1981	8 69.3 in 1971	8 5.58 in 1995	8 0.20 in 1998
9 74.4 in 2002	9 69.7 in 1983	9 5.17 in 2008	9 0.33 in 1971
74.4 in 1970	10 70.0 in 1963	10 5.05 in 1982	10 0.43 in 1950
	
		46 1.56 in 2023	32 1.56 in 2023

Normal Temperature for April at MKCF1 = 72.5°

Normal Rainfall for April at MKCF1 = 2.98 in.

WAUCHULA 2 N (records began in January 1933):

Warmest Aprils	Coolest Aprils	Wettest Aprils	Driest Aprils
1 77.2 in 1945	1 65.7 in 1950	1 8.26 in 1951	1 0.00 in 2001
2 76.3 in 1947	2 66.7 in 1993	2 7.75 in 1947	0.00 in 1978
3 75.6 in 2023	66.7 in 1987	3 6.94 in 1962	0.00 in 1967
4 75.4 in 2015	4 66.8 in 2004	4 6.60 in 1995	4 0.03 in 1963
5 74.8 in 1968	5 67.6 in 1983	5 6.55 in 1953	5 0.05 in 1971
6 74.7 in 1991	6 67.9 in 1952	6 6.44 in 1992	6 0.08 in 1981
7 74.5 in 1970	7 68.1 in 1951	7 6.36 in 1934	7 0.13 in 1970
8 74.4 in 1975	8 68.3 in 2000	8 6.16 in 2021	8 0.16 in 1987
9 74.2 in 1965	9 68.5 in 2007	9 5.95 in 1997	9 0.22 in 1945
10 74.1 in 2020	68.5 in 1997	10 5.44 in 1933	10 0.23 in 1975
74.1 in 1982	
74.1 in 1939		63 1.38 in 2023	25 1.38 in 2023

Normal Temperature for April at WAUF1 = 71.0°

Normal Rainfall for April at WAUF1 = 2.92 in.

ARCHBOLD BIO STN (records began in January 1969):

Warmest Aprils	Coolest Aprils	Wettest Aprils	Driest Aprils
1 76.6 in 2015	1 63.0 in 1987	1 9.53 in 2021	1 0.03 in 2006
2 75.0 in 2023	2 66.4 in 1986	2 5.90 in 1972	2 0.08 in 1971
75.0 in 2020	3 66.7 in 2004	3 5.65 in 2015	3 0.16 in 1981
4 74.8 in 1991	4 66.9 in 1993	4 5.64 in 2023	4 0.19 in 1970
5 74.4 in 2011	5 67.4 in 2005	5 5.47 in 1997	5 0.21 in 1986
6 74.1 in 1994	67.4 in 1983	6 5.37 in 2013	6 0.42 in 2016
7 73.7 in 1982	7 67.7 in 2000	7 4.91 in 1992	7 0.43 in 1978
8 73.5 in 1975	8 68.6 in 1971	8 4.90 in 1973	8 0.52 in 1987
9 73.4 in 2013	9 68.7 in 1992	9 4.15 in 1982	9 0.59 in 2009
10 73.1 in 2017	10 68.8 in 2007	10 4.10 in 2004	10 0.69 in 1977
	68.8 in 1984		

Normal Temperature for April at ACHF1 = 71.7°

Normal Rainfall for April at ACHF1 = 2.54 in.

PUNTA GORDA AREA (records began in May 1914):

Warmest Aprils	Coolest Aprils	Wettest Aprils	Driest Aprils
1 78.7 in 1945	1 67.9 in 1987	1 8.70 in 1920	1 0.00 in 1981
2 78.2 in 1947	2 68.7 in 1915	2 7.93 in 1957	0.00 in 1963
3 76.9 in 1944	3 69.1 in 2004	3 7.08 in 1931	0.00 in 1946
4 76.6 in 2023	69.1 in 1916	4 6.07 in 2023	4 Trace in 1975
76.6 in 2015	5 69.2 in 2005	5 5.80 in 1994	Trace in 1967
76.6 in 1994	6 69.7 in 1971	6 5.52 in 1941	6 0.03 in 1922
7 76.1 in 1954	7 70.0 in 1993	7 5.36 in 1947	7 0.05 in 2006
8 76.0 in 1991	70.0 in 1986	8 5.20 in 1933	8 0.09 in 1970
76.0 in 1946	9 70.1 in 2000	9 5.15 in 1997	9 0.10 in 2001
10 75.9 in 1948	10 70.2 in 1950	10 5.08 in 1965	10 0.11 in 1987
		5.08 in 1948	

Normal Temperature for April at PGD = 73.1°

Normal Rainfall for April at PGD = 2.23 in.

FORT MYERS AREA (records began in January 1902):

Warmest Aprils	Coolest Aprils	Wettest Aprils	Driest Aprils
1 79.2 in 2020	1 68.5 in 1950	1 8.42 in 1939	1 Trace in 1970
2 79.0 in 2023	2 68.8 in 1987	2 7.66 in 1941	Trace in 1967
3 78.8 in 2015	3 69.3 in 1915	3 6.06 in 1933	Trace in 1903
4 77.7 in 2011	4 69.6 in 1903	4 5.89 in 1930	4 0.01 in 2006
77.7 in 1991	5 70.1 in 1983	5 5.83 in 2022	0.01 in 1946
77.7 in 1947	70.1 in 1910	6 5.68 in 1994	6 0.02 in 1922
7 77.5 in 2022	7 70.2 in 1952	7 5.61 in 1916	7 0.08 in 1981
8 77.4 in 1994	8 70.4 in 1971	8 5.50 in 1949	0.08 in 1950
9 77.3 in 1908	9 70.6 in 1931	9 5.34 in 1995	9 0.11 in 1974
10 76.9 in 2018	10 70.8 in 2005	10 5.01 in 1991	10 0.14 in 1987
76.9 in 2013	70.8 in 1993
76.9 in 2002	70.8 in 1961	18 3.99 in 2023	105 3.99 in 2023
76.9 in 1945	70.8 in 1907		
	70.8 in 1902		

Normal Temperature for April at FMY = 74.8°

Normal Rainfall for April at FMY = 2.44 in.

For more Climate information visit our web site at the following link:
<https://www.weather.gov/tampabay> and then go to the Climate and Past Weather drop down menu above the graphical forecast images.