



**NMDOT**

ENVIRONMENTAL  
BUREAU



# Dust Storm Mitigation Update

Trent Botkin & Bill Hutchinson

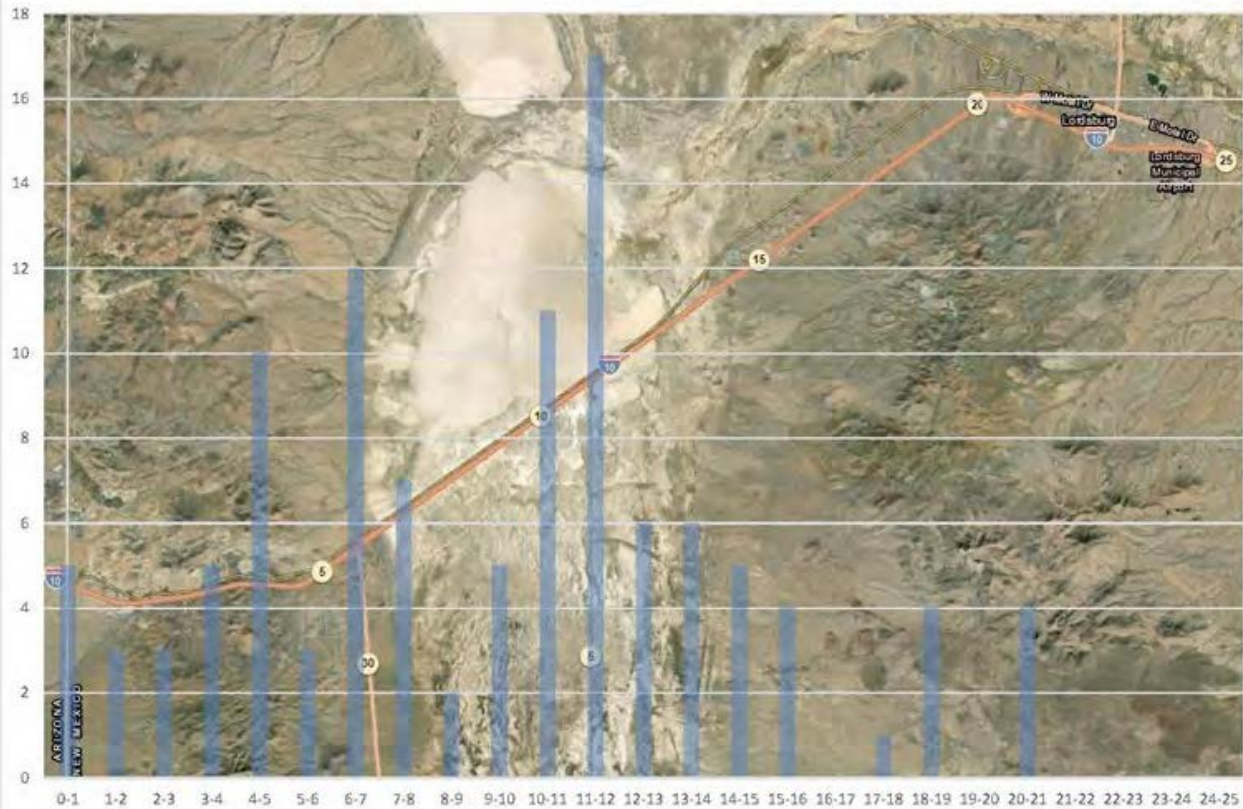
# Lordsburg Playa Dust Storms

1965–Present: Over 40 Dust -related Highway Deaths

2012– Present: 13 Deaths  
39 Closures of I-10  
120 Dust Events



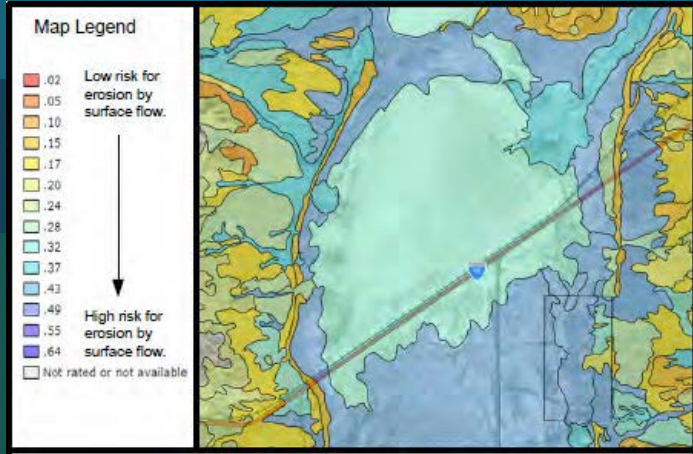
Number of Accidents related to Dusk or Wind, at or near Mile Marker 0-25, from 1980-2016



# I-10 MP 6– Road Forks Playa

- Site of Multiple Crash Fatalities
- Sediment Accumulation Caused by I-10 “damming” a drainage swale
- Managed by BLM
- Already monitored by NMSU climatologist for dust activity
- Opportunity to reduce the amount of available dust near the roadway





# Research & Design



# NEPA Coordination with the BLM & FHWA

- Assessment of current BLM land management plans
- Interagency meetings
- Public Meetings
- BLM Plan of Development
- Environmental Assessment
- Categorical Exclusion

# Final Design



- |                |                    |   |                         |
|----------------|--------------------|---|-------------------------|
| Access Road    | Trash Removal Area | Rock Staging Area                                   | Microborm Concentration |
| Existing Fence | Historical Channel | Media Luna Impact Area                              | Imprinting and Seeding  |
| Access Gate    | Headcutting Arroyo | Imprinting, Seeding, and Tackifier Application Area |                         |
| Proposed Fence | Channel Work       |   |                         |



1:6,000



## Road Forks/Lordsburg Playa Dust Mitigation Project

Hidalgo County, New Mexico

Sections 6 & 7, Township 24S, Range 20W  
Sections 1 & 12, Township 24S, Range 21 W  
N.M.P.M.

Coordinate System: NAD 1983 UTM Zone 13N

# Sept. 2018: Keylining , Imprinting, Tackifier , Fence





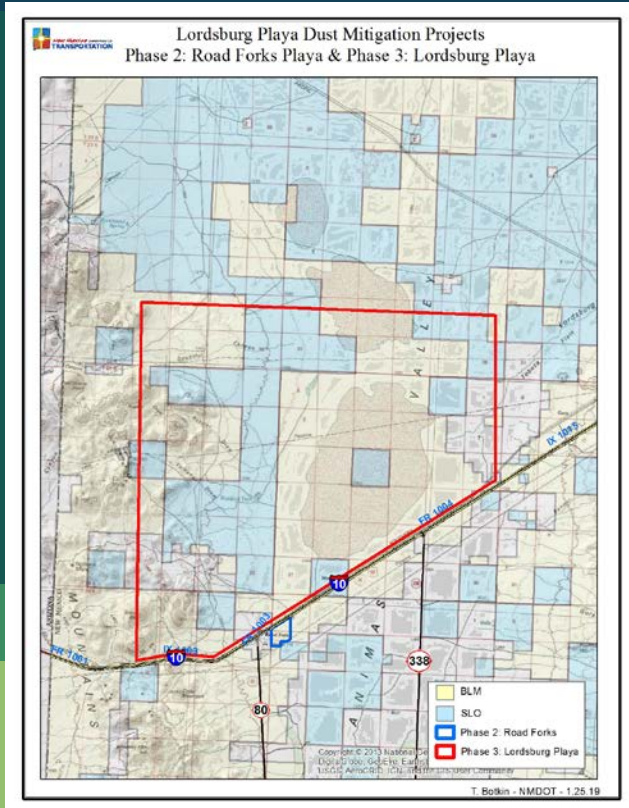
# Native and Non -native Growth within Imprinting Area



# Road Forks Playa Management Plan

- NMSU Climatologist monitoring air quality with multiple methods
- Restoration contractor & BLM Botanists monitoring revegetation
- Under FHWA/NMDOT management, the area will remain ungrazed to preserve the soil crust (~200 acres)

# Phase 3: Lordsburg Playa



- Over 16 Square Miles of Playa Floor
- Eroding playa surface & watershed from modern and historic ranching and mining
- Surface disturbance analysis (NMDOT) & corroborating NRCS soil data
- Land managed by BLM & SLO

## Watershed Land Use -Related Erosion



## Grazing Disturbance



Corral in center of playa

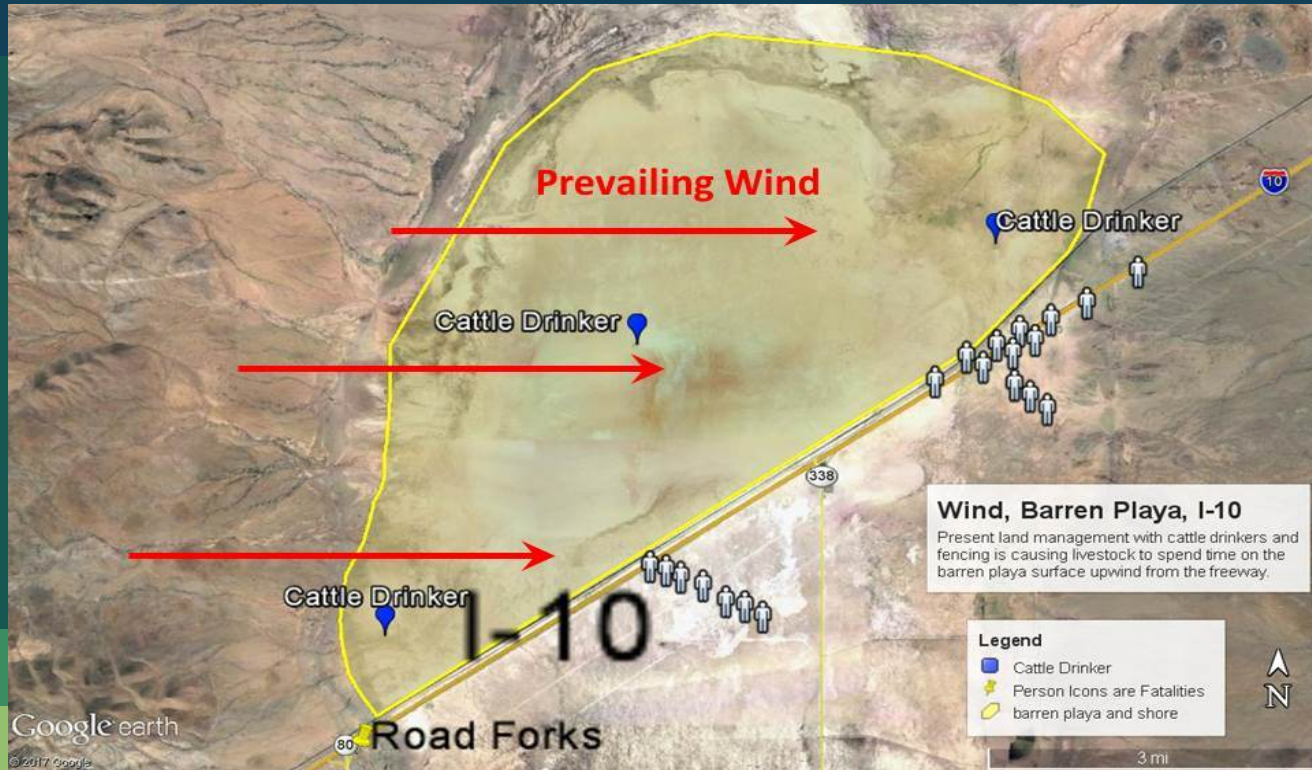


Highly erodible playa surface (cattle footprints)

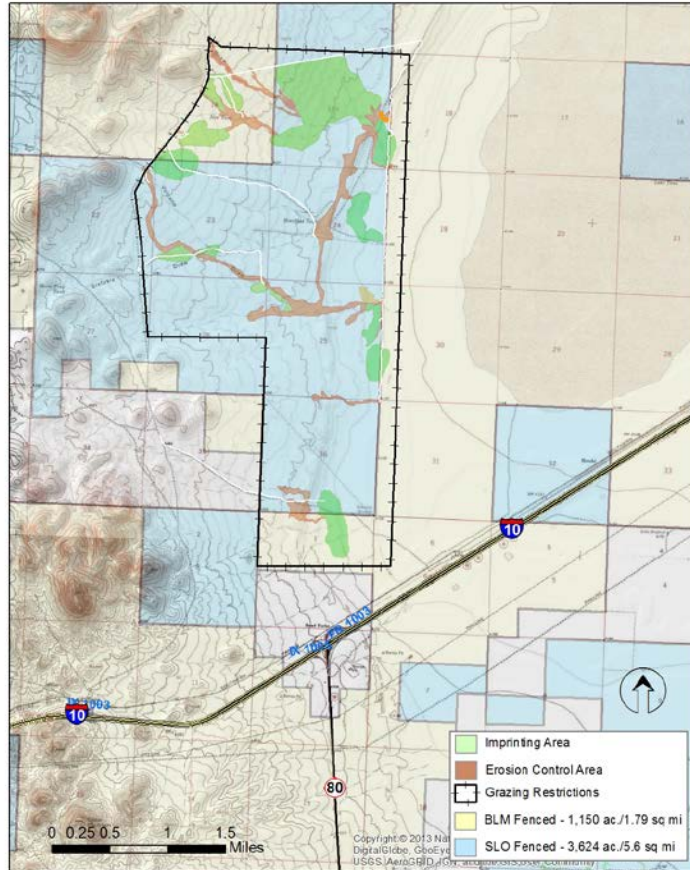


Cattle trail through playa steppe

# Disturbance Impact in Relation to Dust -Caused Fatalities



### Phase 3 Proposed Dust Mitigation Actions



0 0.25 0.5 1 1.5  
Miles

Copyright © 2013 NHD  
DigitalGlobe, GeoEye  
USGS/Airphoto.com

# Grazing Restrictions

- Highly controversial for BLM
- Primarily affecting two grazing lessees
- Recommendation for long - term restrictions





## Project Collaborators

**NRCS:** Completing intensive soil mapping project 2019

**NMSU:** State Climatologist Dr. Dubois conducting intensive dust storm analysis using NMDOT Research Bureau funding

**USDA-Jornada Experimental Range:** Establishing a research station on the playa as part of the National Wind Erosion Research Network

**BLM:** Stakeholder and contributor in completing Environmental Assessments

**NM DPS:** Provide first -hand experience and crash data

**Landowners/Lessees:** Provide long - term knowledge of range conditions

**Consultants:** Stream Dynamics, Site Southwest, Ecosphere

**NMDOT:** District 1 (Deming), Research Bureau, and Management Support

# NMDOT ENVIRONMENTAL BUREAU

**Trent Botkin 505-469-015**

**[Trent.Botkin@state.nm.us](mailto:Trent.Botkin@state.nm.us)**

**Bill Hutchinson 505-795-1275**

**[William.Hutchinson@state.nm.us](mailto:William.Hutchinson@state.nm.us)**