



United States Department of Agriculture

Dust Mitigation Overview

Steve Smarik
State Resource Conservationist
Natural Resources Conservation Service

Arizona Dust Conference
March 21, 2016

Natural Resources Conservation Service



United States Department of Agriculture

Natural Resources Conservation Service

formerly Soil Conservation Service



Natural Resources Conservation Service



Dust Mitigation Conference

- ▶ NRCS in collaboration with University of Arizona Cooperative Extension held conference January 20
- ▶ Dr. Paul Brown and Dr. James Walworth were main contributors
- ▶ Over 80 attendees



Dust Mitigation Conference

- ▶ Safety and Health Considerations
- ▶ Mechanics of Wind Erosion
- ▶ Assessing Wind Erosion
 - Modeling
 - Measuring
- ▶ Importance of understanding weather systems and soil properties
- ▶ Mitigation
 - Agricultural BMP Program
 - Use of plant materials and land treatment
 - Soil biocrusts

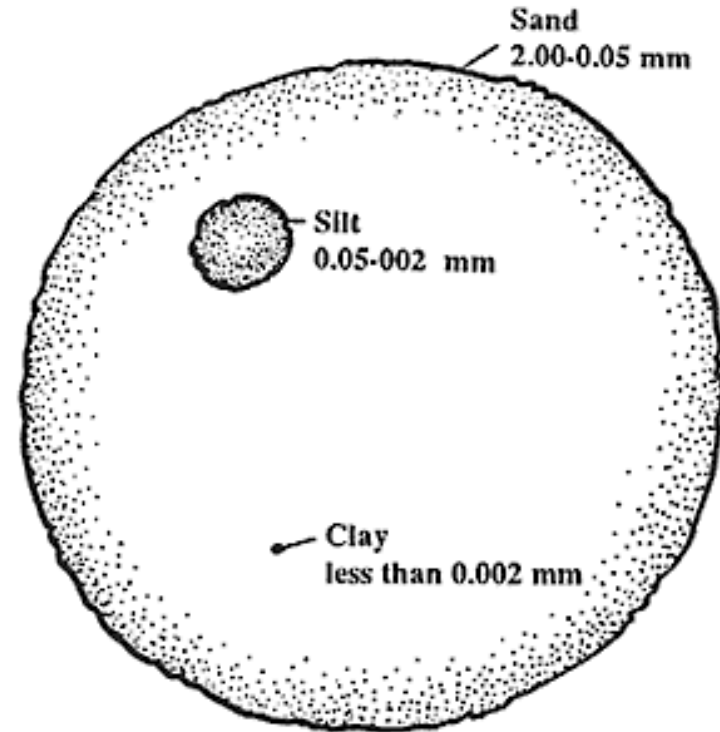


Dust Mitigation Conference

- ▶ <https://extension.arizona.edu/2016-dust-assessment-management-mitigation-presentations>

Importance of Soil Properties

- ▶ Texture
 - Sand
 - Silt
 - Clay
- ▶ Salinity
- ▶ Sodicity/Alkalinity
- ▶ Soil Chemistry



Mitigation with Surface Compounds

- ▶ Emulsions
- ▶ Polymers
- ▶ Surfactants
- ▶ Resins
- ▶ Synthetic organics



Mitigation with Plant Materials

- ▶ Cover Crops
- ▶ Native Plantings
- ▶ Mulch materials





United States Department of Agriculture

Mitigation with Plant Materials



>56 yrs. recovery time after veg clearing (Kade & Warren 2002)

Project Seeks To Reclaim Abandoned Lands

By Don Dale

RED ROCK, Ariz. — The Soil Conservation Service says there are hundreds of thousands of acres of abandoned croplands and other denuded lands in Arizona that are creating environmental problems—and the agency is starting to do something to reclaim them.

"The land has been abandoned because of water problems," said Pat Williams, director of the SCS Plant Materials Center at Tucson.

Williams was in the Red Rock area recently with his assistant, Jim Briggs, to check on the re-

(See RECLAIMING, pg. 36)

UNSEED areas show contrast to re-vegetation sections, where grasses and plants have begun to re-establish themselves.

PLANT SPECIES in the re-vegetation area were selected for their adaptation to desert conditions; most are native to Arizona, though not necessarily to this area.

JIM BRIGGS and Pat Williams, photo at bottom left, examine a four-wing saltbush that appears to be thriving in a re-vegetation area. In the photo at bottom right, blue panic seedheads indicate the grass is doing well.

Mitigation with Soil Biocrusts

- ▶ Cyanobacteria
- ▶ Algae
- ▶ Mosses
- ▶ Lichens



Mitigation with Animals

- ▶ High Density/
Short Duration
Grazing
- ▶ Native Seeding
- ▶ Imported feed





United States Department of Agriculture

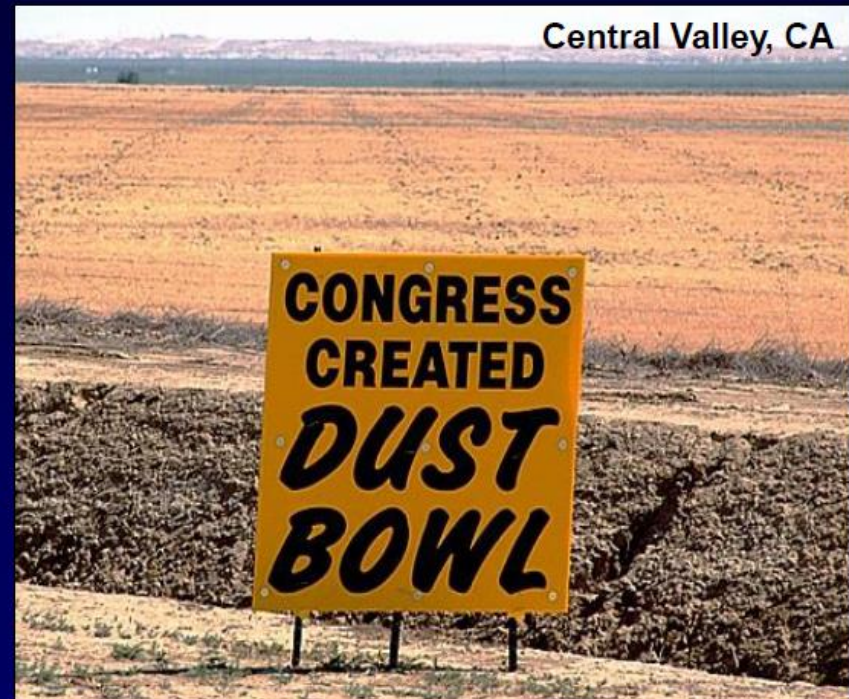
Other Mitigation Considerations

- ▶ Water
 - Supplemental Irrigation, Leaching
 - Water harvesting
 - Land Shaping
 - Existing ponds, canals
 - Soil Moisture Amendments
- ▶ Soil Amendments (for sodium treatment)
 - Gypsum
 - Sulphur
 - Sulphuric Acid

Characterizing Dust Emission Hotspots

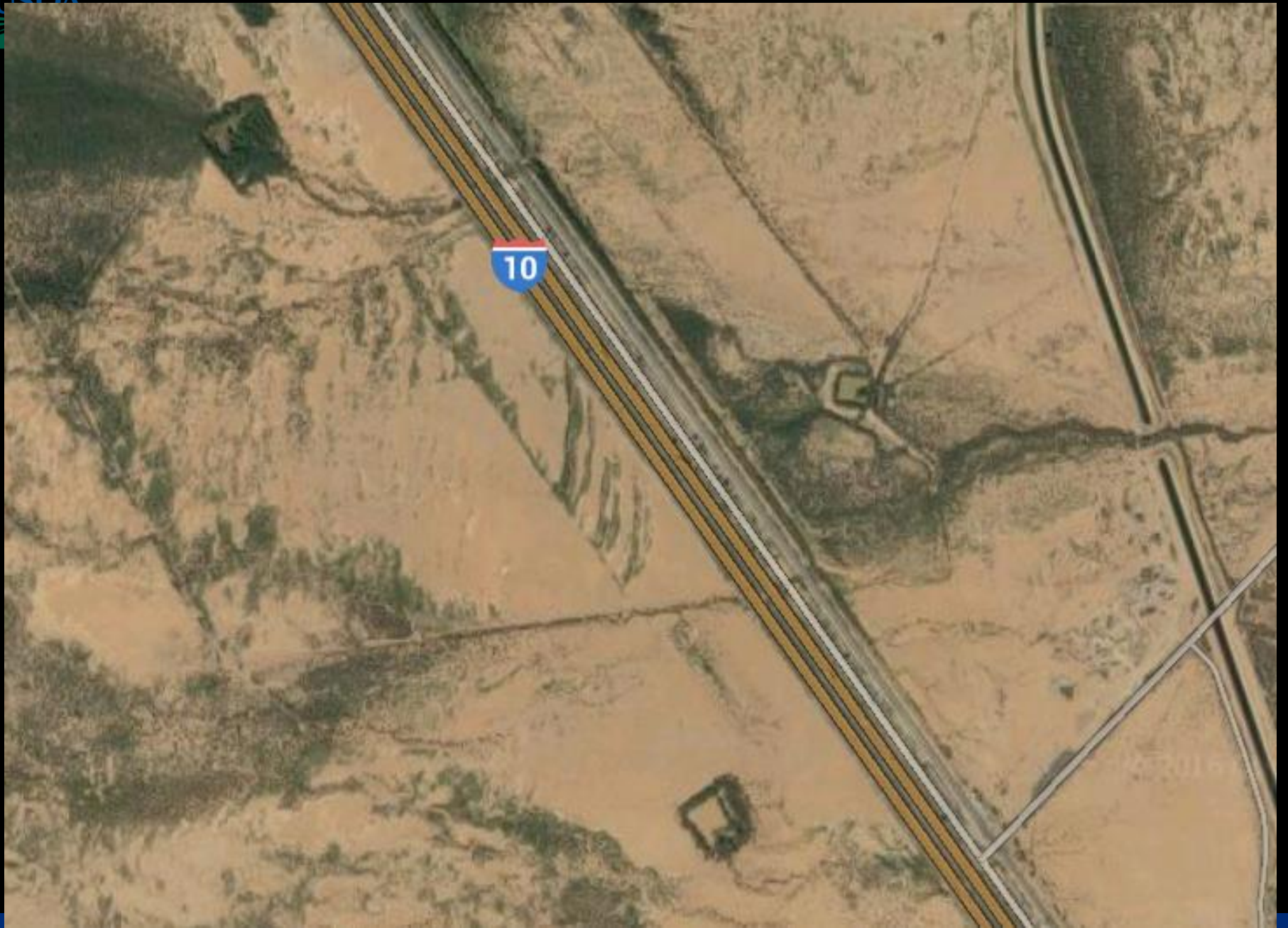
Most probable locations and conditions for dust emission hotspots (from Gillette 1999):

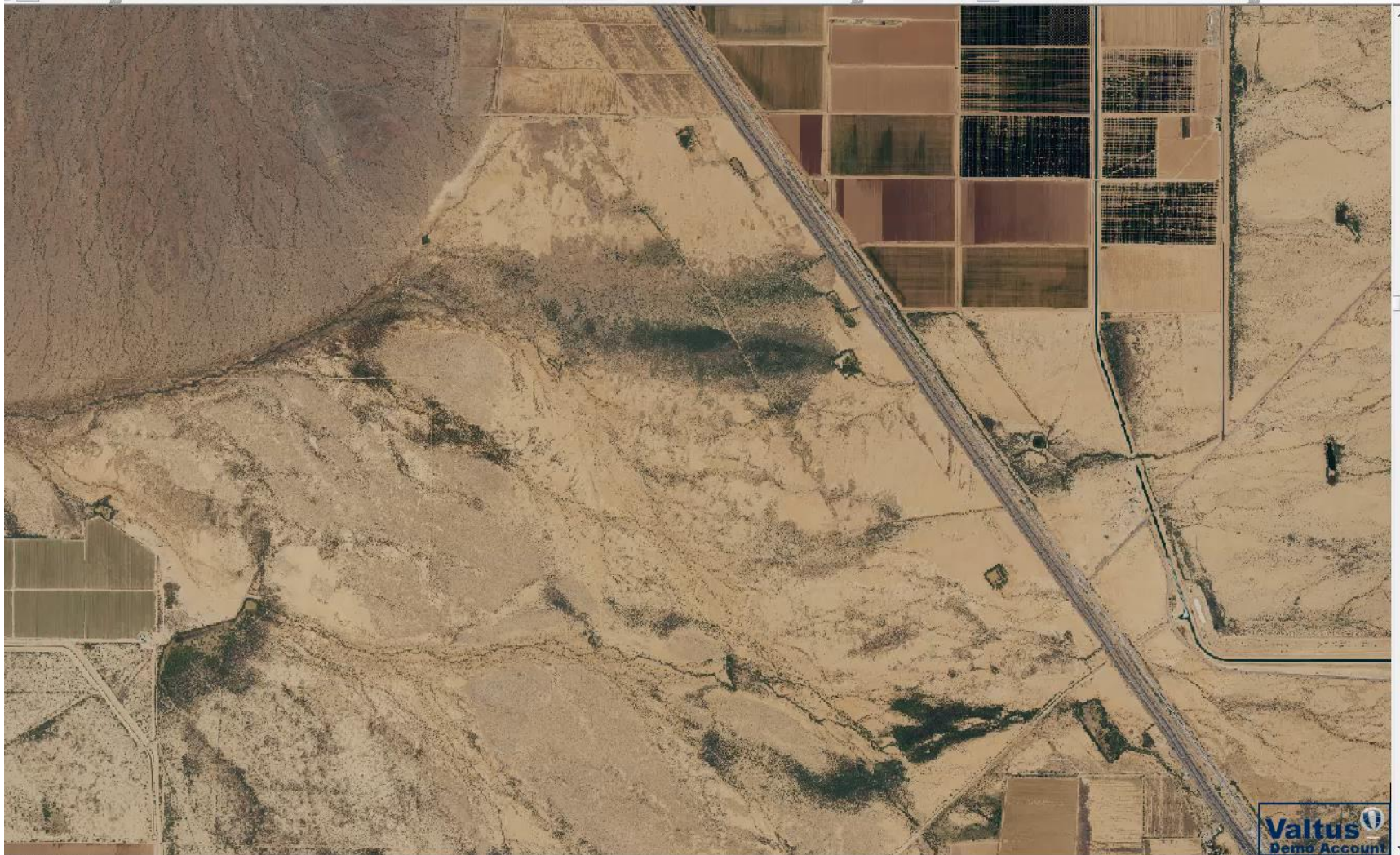
1. Unvegetated and free of gravel
2. Sandy sediments
3. Long fetch length
4. Smooth surface roughness (z_0)
5. Disturbed sediment
6. Lacking soil moisture/aggregates
7. Thick sediment deposits
8. Strong meso-scale winds
9. Topographically-forced wind convergence



(From Dr. Jason Field– Dust Mitigation Conference)







Valtus
Demo Account

So, What's it Going to Take?





United States Department of Agriculture

Credits:

Biocrust photo natural
environment:

By Nihonjoe – Own work, CC BY-SA
3.0,

<https://commons.wikimedia.org/w/index.php?curid=14671018>



United States Department of Agriculture

Questions?

Your Name, Your Title

FirstName.LastName@az.usda.gov

(123) 456-7890

USDA is an equal opportunity provider and employer.