



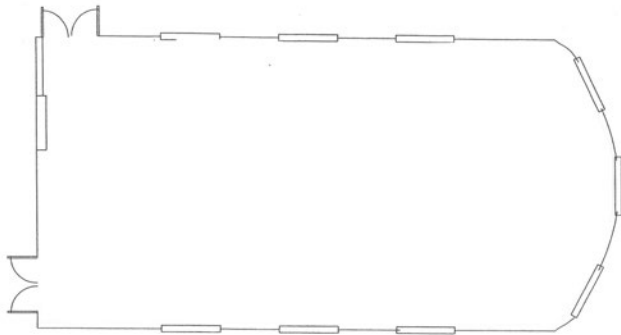
**Welcome to Wave Hill**, a spectacular garden and cultural center in the historic Riverdale section of the Bronx. We look forward to welcoming you for your upcoming meeting or event. To help us fully prepare for your arrival, we need to ascertain how you would like your meeting room set-up. Our modular furniture allows us to set the rooms in a variety of configurations, and below you will see images of possible options. Of course, we will be happy to discuss with you any other arrangements. Each room section includes a floor plan of the space. All our rooms feature large windows that overlook the gardens, and many offer views of the Hudson River and the Palisades.

# Armor Hall Options

**Size 30' x 60' maximum capacity 150 – 180 depending on set up**

This stately, Romanesque-style, great hall is adaptable for daytime lectures, roundtable workshops and board-style, large-scale meetings. The adjacent Mark Twain Room, included in the rental fee, is suitable as a dining space, check-in area or additional break-out room. Both rooms have views of the Hudson River and Palisades.

Rental includes table and chairs, integrated sound system, hand-held or lapel microphones and dual smart TVs for presentations.



Armor Hall at Wave Hill  
30' x 60'



Conference set-up with 60"-round tables



Lecture set-up



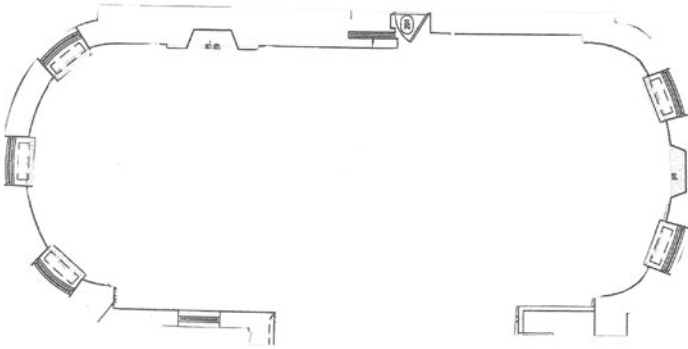
Small conference set-up with 6' tables



# Mark Twain Options

**Size 21' x 52' maximum capacity 45 – 60 depending on set up**

Formerly the library when Wave Hill House was a private residence, this elegant room looks out onto the Kate French Terrace. It is adjacent to Armor Hall and the reception lobby. This room is included in rental for Armor Hall and features a free-standing, smart TV. Can also be rented separately.



Set-up with 60"-round tables



Cocktail party set-up



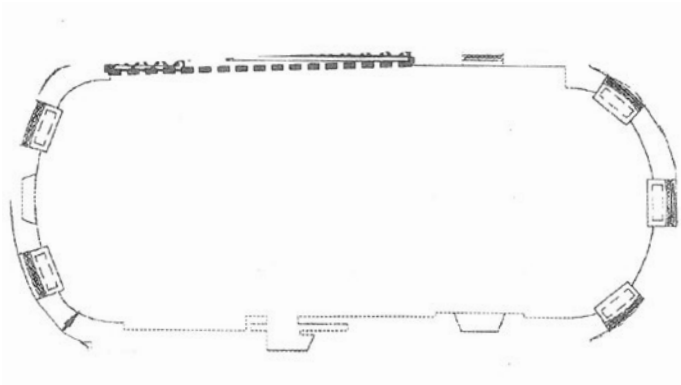
Buffet set-up with optional 60" tables



# Toscanini Room Options

**Size 21' x 49'** maximum capacity 35 – 40 depending on set up

Located on the second floor—an elevator is available—this space, the former master suite, runs the width of the house. Both ends of this stunning room have large window bays opening up to views of the Hudson River and tree-covered lawns. Rental includes in-house furniture and free-standing, smart TV.



Work pod set-up



Boardroom open set-up



Horseshoe set-up



Classroom set-up



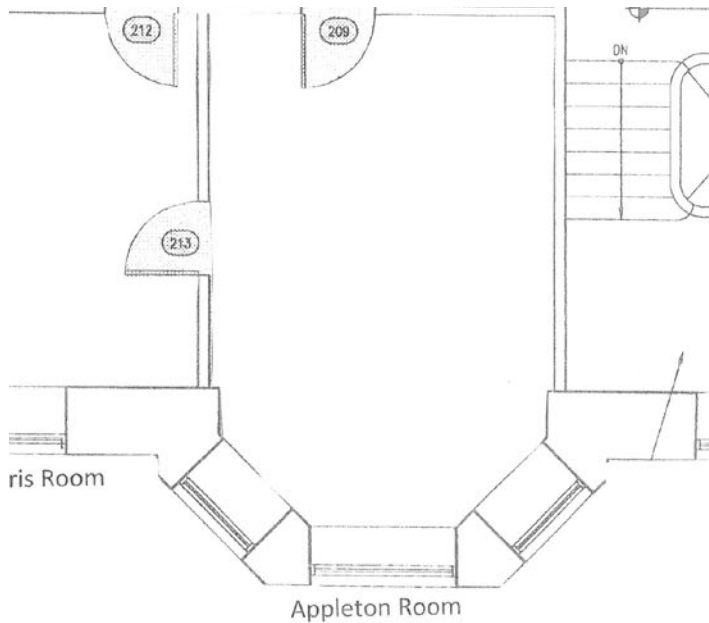
Boardroom closed set-up  
Photo: Joshua Bright



# Appleton Room Options

**Size 14' x 20'** **maximum capacity 14**

Down the hall from Toscanini, this intimate space has a bay window overlooking a lawn and the Shade Border. It is suitable for a small meeting, breakout space or green room. Rental includes in-house furniture and wall-mounted, smart TV.



Conference set-up



Lecture set-up



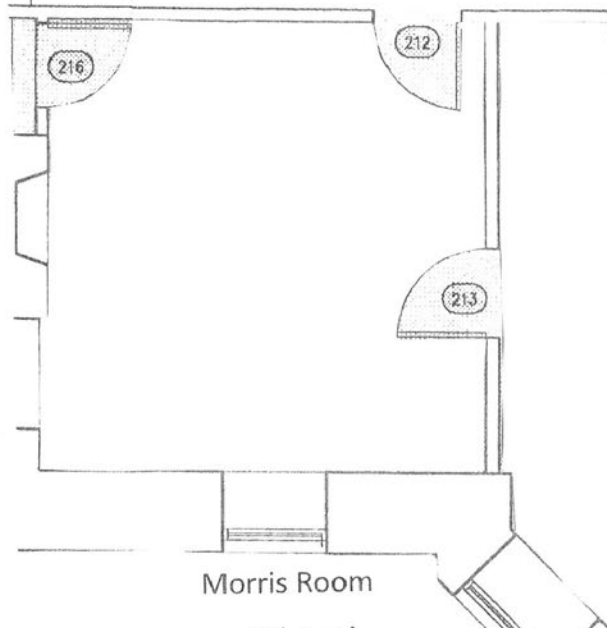
Lounge set-up



# Morris Room Options

**Size 14' x 14'**    **maximum capacity 12**

Connected to the Appleton Room next door, this space features two sets of windows. Rental includes in-house furniture and a wall-mounted, smart TV.



Lounge set-up



Conference set-up



## Tea Room

---

**Size: 200 square feet maximum capacity 14**

Just off the lobby, this intimate room can serve as a break-out space for larger conferences.

AV is not available in this space.

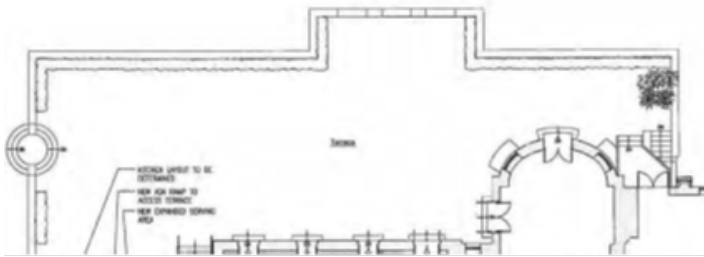


# Kate French Terrace

**Size 32' x 78' maximum capacity 75**

Located off the lobby and the Mark Twain Room, this space is ideal for after-conference cocktails or dinner,

once the gardens are closed to the public for the day. The space is partially tented from April through December.



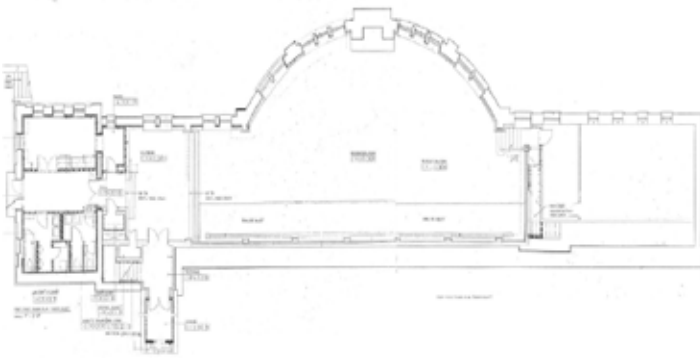


# Ecology Building Options

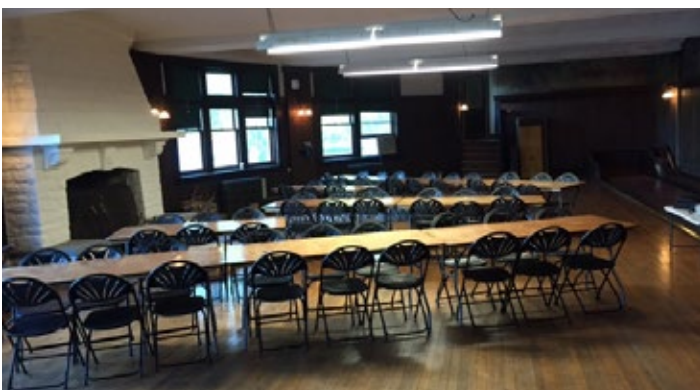
**Size: 1500 square feet maximum capacity 130**

**Note: not ADA-accessible**

Located at a secluded site off the Lower Lawn, the Ecology Building offers an open floorplan with onsite restrooms. Suitable for both active agendas and casual meetings. Rental includes in-house furniture and free-standing, smart TV.



Conference set-up



Board meeting set-up



## Accessibility at Wave Hill House

---

Wave Hill House is located along a paved route with moderate changes in grade. The ground floor and lower level of Wave Hill House are wheelchair-accessible. There is an accessible, ground-level entrance at the front of the building with a power-assist door. The restroom on the ground level is all-gender and ADA-compliant. Additional ADA-compliant restrooms are available on the lower level, which can be accessed by an elevator. The second floor of Wave Hill House is reachable by elevator; the doorway into the Toscanini Room on that floor is only 34 inches wide; some wheelchairs may find it difficult to enter that space.

