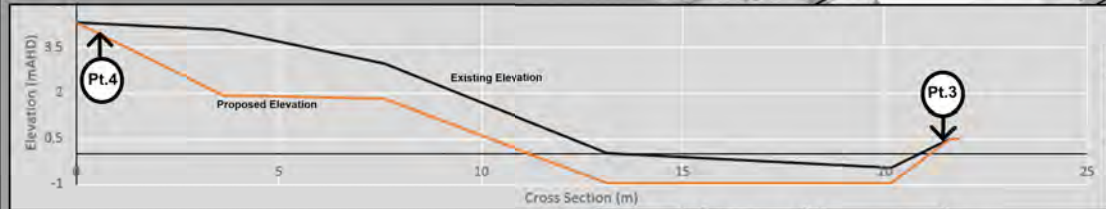
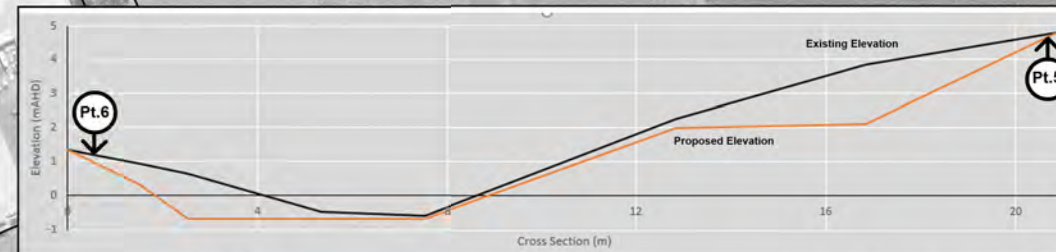


The Condong Creek modifications are based upon a design concept presented in the "Condong Creek Drainage Management Plan" prepared by Australian Wetlands Consulting Pty Ltd in 2018.

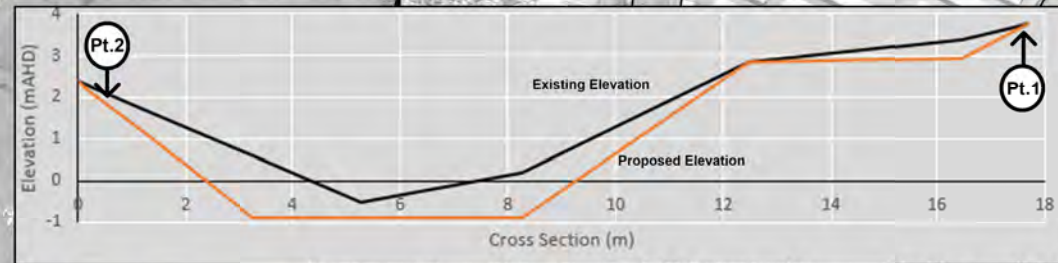


Enlarge Condong Creek from the confluence to the floodgate. Enlarge to 12m and include a maintenance access bench on the western side of the creek



Enlarge Condong Creek from the Quarry Road bridge to the confluence. Enlarge to 8m and include a maintenance access bench on the eastern side of the creek

Enlarge the channel that runs parallel to the airfield upto where it joins Condong Creek. Enlarge to 6m and include a maintenance access bench on the eastern side of the channel.



LEGEND

- Extent of Works
- Channel Modifications

Notes:
Aerial photograph date: 2016

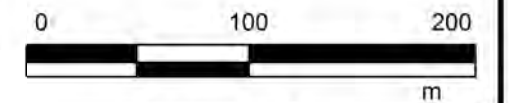
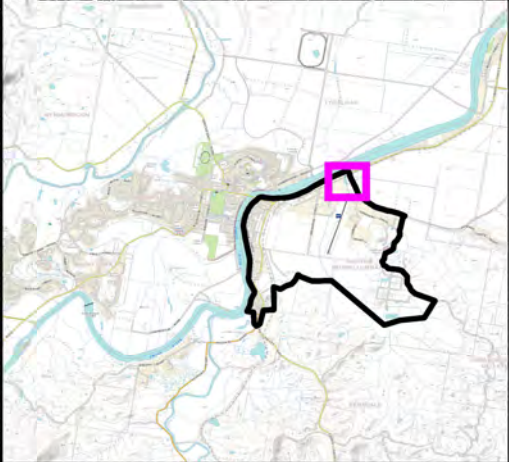
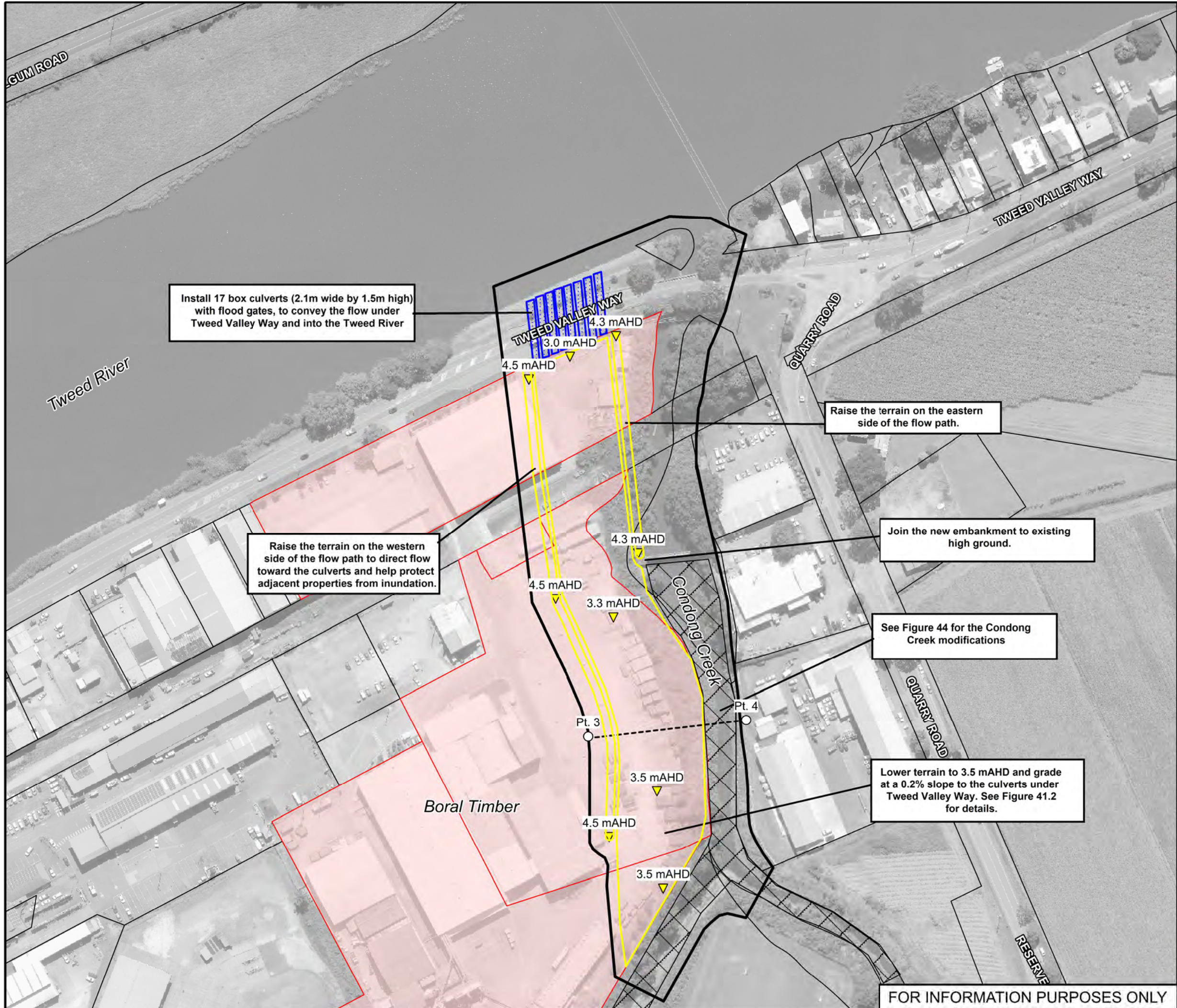


Figure 47:
Concept Design for Condong Creek Channel Modifications (FM15)

Prepared By:
Catchment Simulation Solutions
Suite 10.01, 70 Phillip St
Sydney, NSW 2000

File Name: Figure 47 - Concept Design for Condong Creek Channel Modifications (FM15).wor

Bob Whittle
Murwillumbah Airfield



LEGEND

- Extent of Works
- Design Terrain Level
- Terrain Changes
- Properties Impacted by Proposed Design
- Proposed Culverts

Notes:
Aerial photograph date: 2016

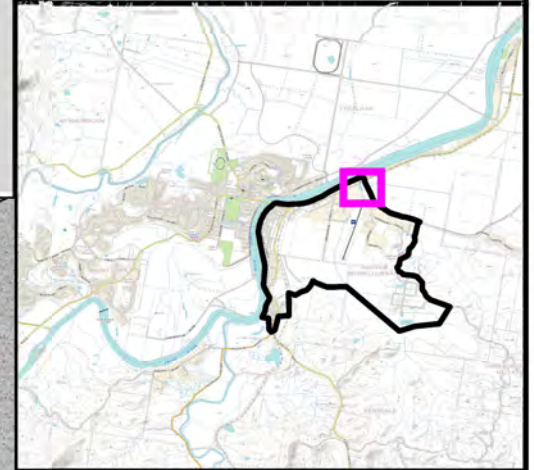
0 55 110
m

Figure 48.1:
Concept Design for the
Condong Creek High Flow
Bench (FM16)


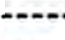






Prepared By:
 Catchment Simulation Solutions
Suite 10.01, 70 Phillip St
Sydney, NSW 2000

File Name: Figure 48.1 - Concept Design for the Condong Creek High Flow Bench (FM16).wor

FOR INFORMATION PURPOSES ONLY



LEGEND

-  Extent of Works
-  Section Alignment
- Depth of Fill**
-  Upto 1.0m
-  1.0m to 2.0m
-  2.0m to 3.0m
- Depth of Cut**
-  Upto -1.0m
-  -1.0m to -2.0m
-  -2.0m to -3.0m

Notes:
Aerial photograph date: 2016

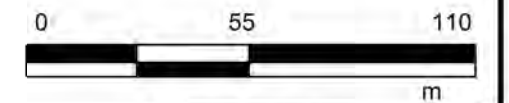

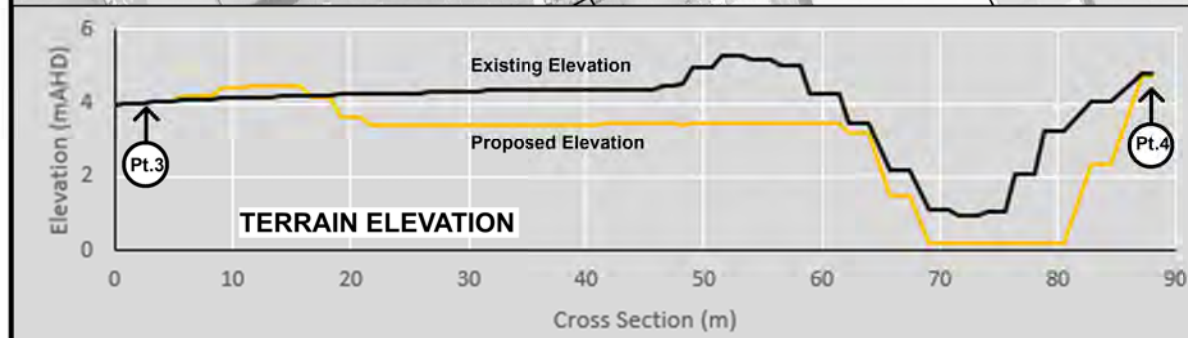
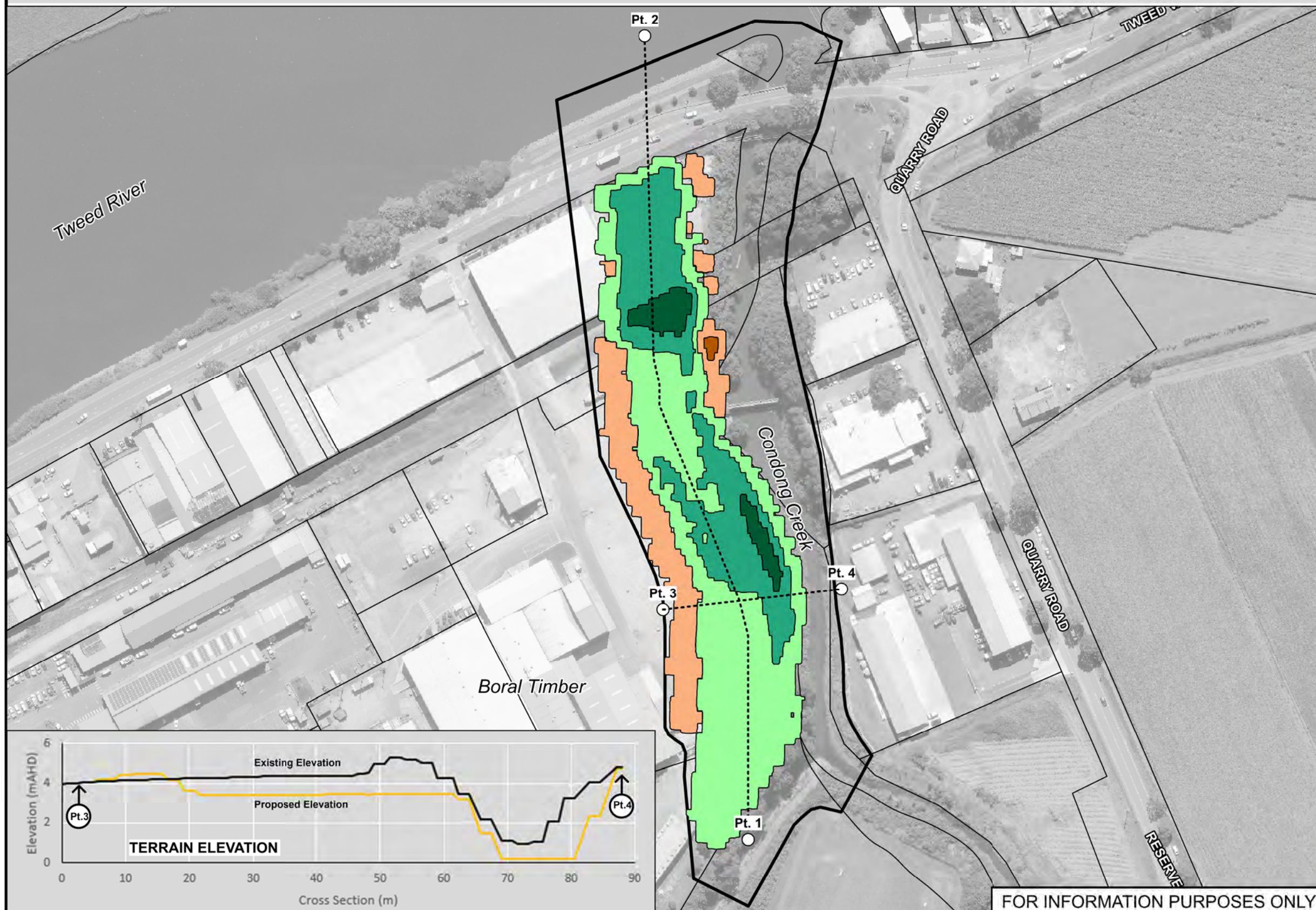
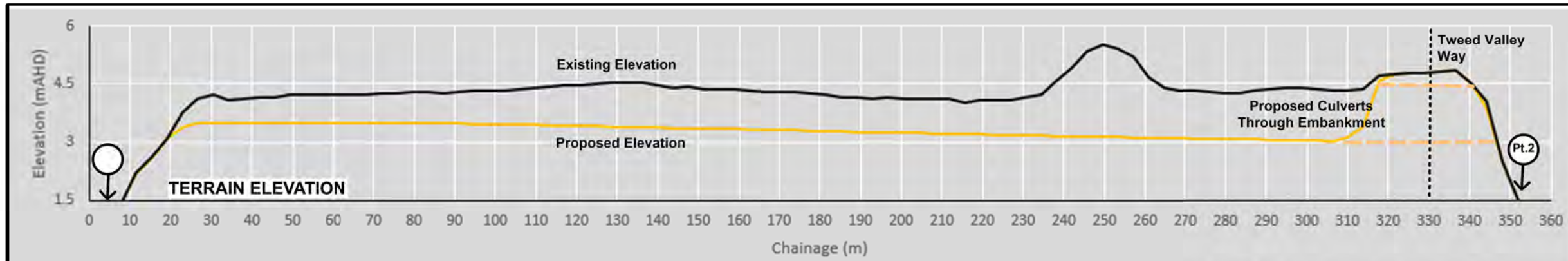


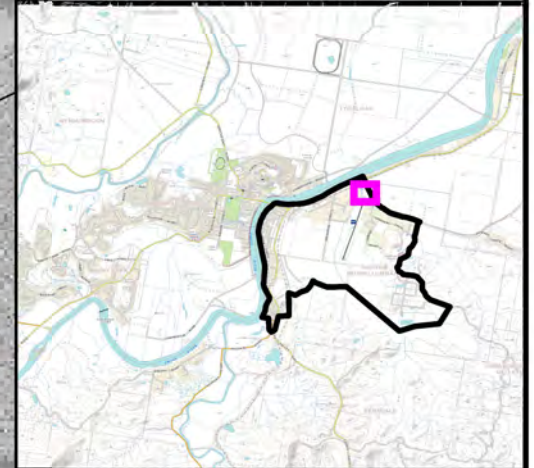
Figure 48.2:
Concept Design for the
Condong Creek High Flow
Bench (FM16)

Prepared By:
 **Catchment Simulation Solutions**
Suite 10.01, 70 Phillip St
Sydney, NSW 2000



File Name: Figure 48.2 - Concept Design for the Condong Creek High Flow Bench (FM16).wor



FOR INFORMATION PURPOSES ONLY

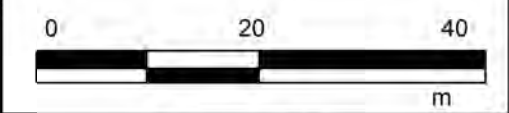


LEGEND


-  Extent of Works
-  Additional Drainage

Notes:

Aerial photograph date: 2016



**Figure 49:
Concept Design for the
High Level Condong Creek
Outlet (FM17)**

Prepared By:

Catchment Simulation Solutions
 Suite 10.01, 70 Phillip St
 Sydney, NSW 2000

File Name: Figure 49 - Concept Design for the High Level Condong Creek Outlet (FM17).wor

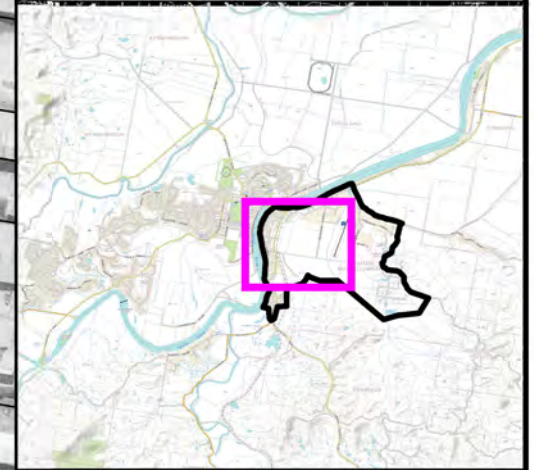


EXISTING STRUCTURE






**An additional 8 x (2560mm x 1850mm)
box culverts with flood gates.**

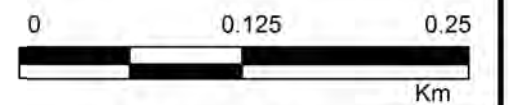
QUARRY ROAD




LEGEND

-  Designated VHP Scheme Area
-  Future Expanded VHP Scheme Area
-  Additional Residential Lots (without buildings) that Council Could Consider For Purchase or Rezoning

Notes:
Aerial photograph date: 2016

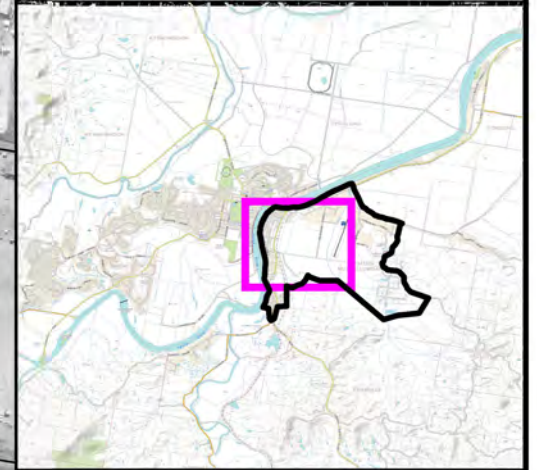


**Figure 50:
Suggested Modifications to
Voluntary House Purchase
Scheme (PM1)**

Prepared By:
 **Catchment Simulation Solutions**
Suite 10.01, 70 Phillip St
Sydney, NSW 2000

File Name: Figure 50 - Suggested Modifications to Voluntary House Purchase Scheme (PM1).wor

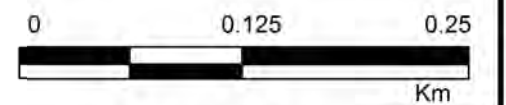




LEGEND

- High Priority
- Medium Priority

Notes:
Aerial photograph date: 2016

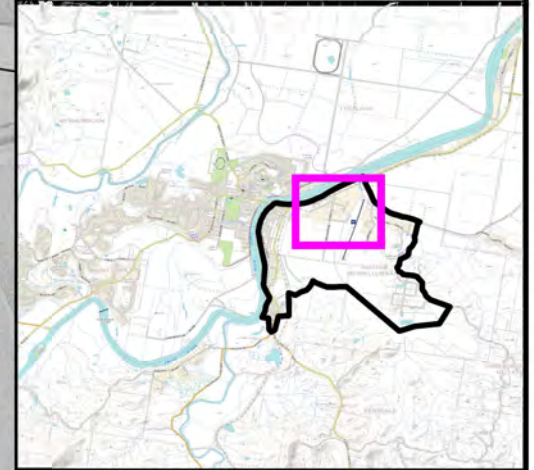


**Figure 51:
Commercial Properties that
Would Benefit from Temporary
Flood Barriers (PM2)**




Prepared By:
 **Catchment Simulation Solutions**
Suite 10.01, 70 Phillip St
Sydney, NSW 2000

File Name: Figure 51 - Commercial Properties that Would Benefit from Temporary Flood Barriers (PM2).wor





LEGEND

-  Extent Of Works
-  Land Swap Properties
-  Buildings To Be Removed

Notes:
Aerial photograph date: 2016

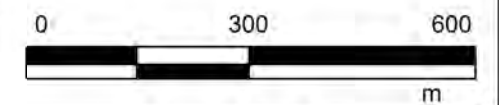

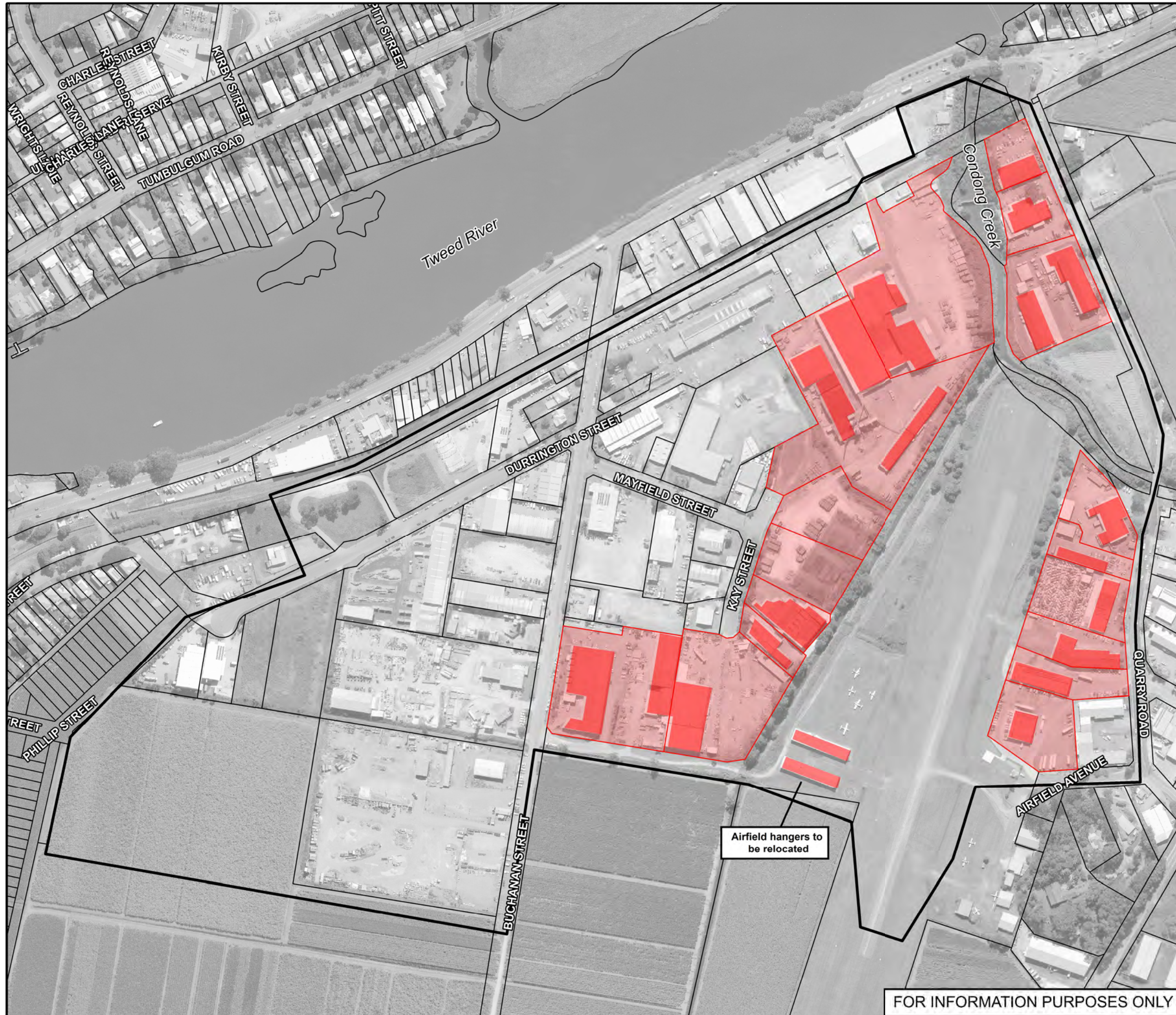


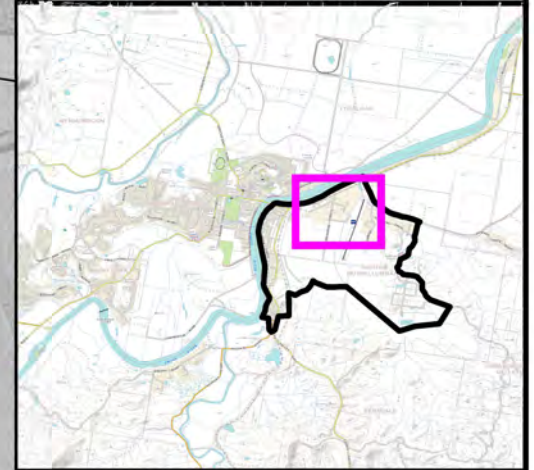
Figure 52.1:
Concept Design for Industrial
Land Swap Option 1
(PM3)

Prepared By:
 **Catchment Simulation Solutions**
Suite 10.01, 70 Phillip St
Sydney, NSW 2000

File Name: Figure 52.1 - Concept Design for Industrial Land Swap Option 1 (PM3).wor



FOR INFORMATION PURPOSES ONLY



LEGEND

-  Extent of Works
- Depth of Cut
 -  Up to -1.0m
 -  -1.0m to -2.0m
 -  Over -2.0m

Notes:
Aerial photograph date: 2016

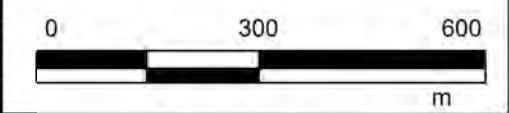

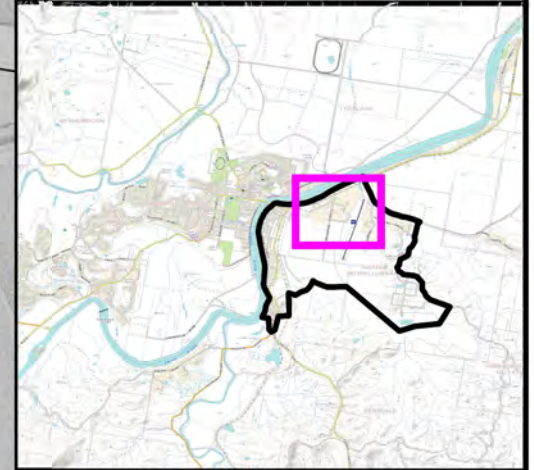


Figure 52.2:
Concept Design for Industrial
Land Swap Option 1
(PM3)




Prepared By:
 **Catchment Simulation Solutions**
Suite 10.01, 70 Phillip St
Sydney, NSW 2000

File Name: Figure 52.2 - Concept Design for Industrial Land Swap Option 1 (PM3).wor





LEGEND

-  Extent Of Works
-  Land Swap Properties
-  Buildings To Be Removed

Notes:
Aerial photograph date: 2016

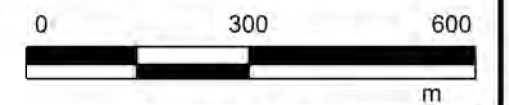

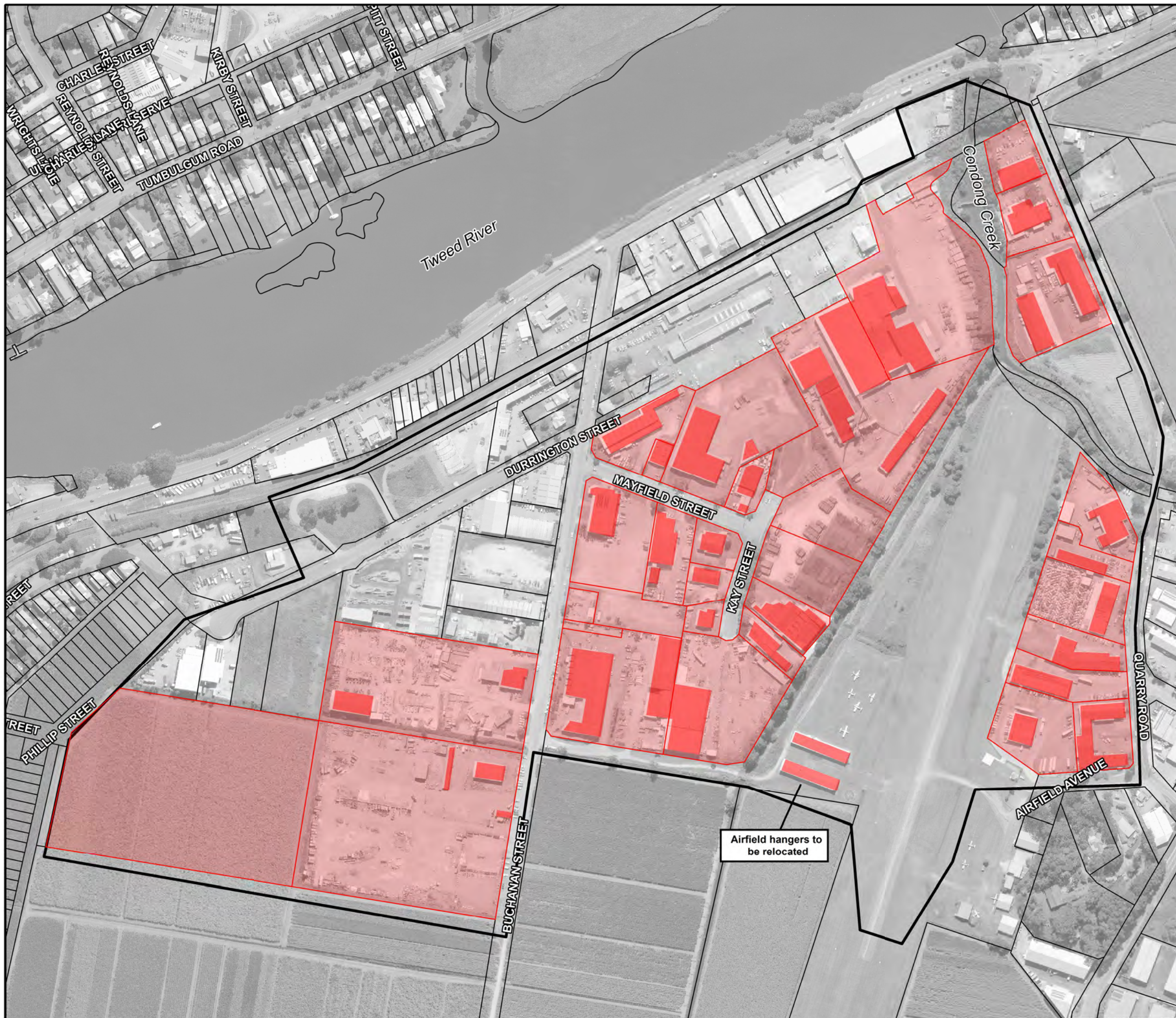
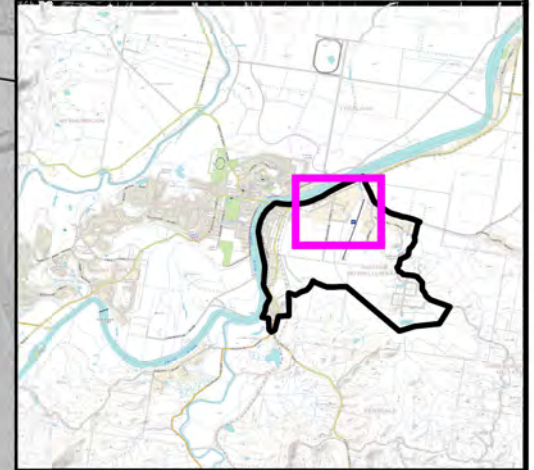


Figure 53.1:
Concept Design for Industrial
Land Swap Option 2
(PM4)

Prepared By:
 **Catchment Simulation Solutions**
Suite 10.01, 70 Phillip St
Sydney, NSW 2000

File Name: Figure 53.1 - Concept Design for Industrial Land Swap Option 2 (PM4).wor





LEGEND

-  Extent of Works
- Depth of Cut
 -  Up to -1.0m
 -  -1.0m to -2.0m
 -  Over -2.0m

Notes:
Aerial photograph date: 2016

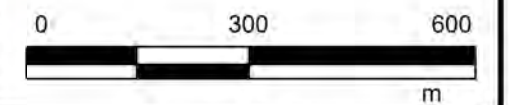

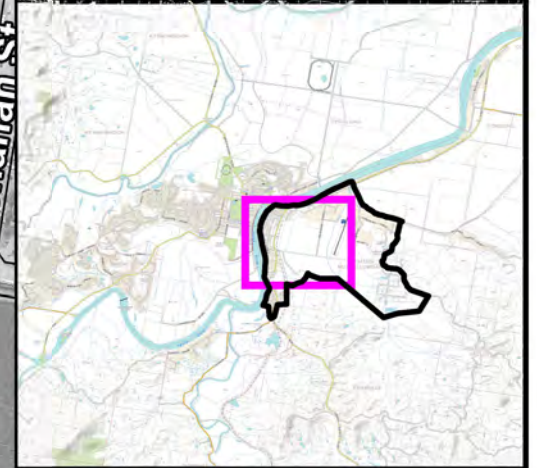


Figure 53.2:
Concept Design for Industrial Land Swap Option 2 (PM4)


Prepared By:
 **Catchment Simulation Solutions**
Suite 10.01, 70 Phillip St
Sydney, NSW 2000

File Name: Figure 53.2 - Concept Design for Industrial Land Swap Option 2 (PM4).wor

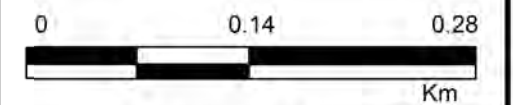





LEGEND

 Property with a single dwelling on multiple lots

Notes:
Aerial photograph date: 2016



**Figure 54:
Potential Properties Identified
for Lot Consolidation
(PM5)**

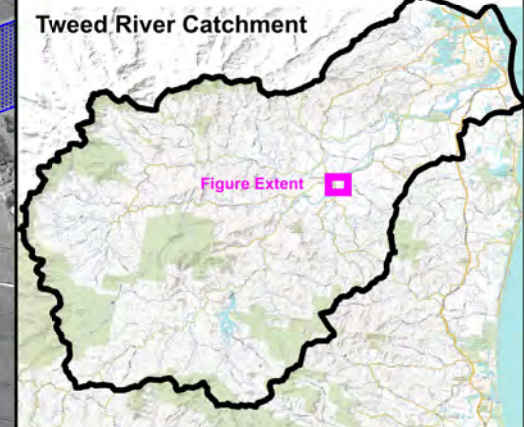
Prepared By:
 **Catchment Simulation Solutions**
Suite 10.01, 70 Phillip St
Sydney, NSW 2000

File Name: Figure 54 - Potential Properties Identified for Lot Consolidation (PM5).wor



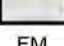


FLOODPLAIN RISK MANAGEMENT PLAN





LEGEND

-  South Murwillumbah Study Area
-  Recommended Option
-  Not Recommended Option
- FM Flood Modification Option
- PM Property Modification Option
- RM Response Modification Option

Notes:
Aerial photograph date: 2016

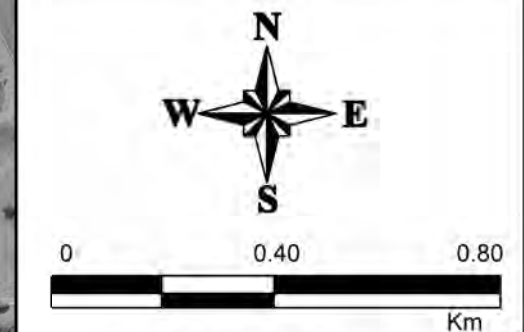


Figure 55:
South Murwillumbah
Floodplain Risk
Management Plan

Prepared By:
 **Catchment Simulation Solutions**
Suite 10.01, 70 Phillip St
Sydney, NSW 2000

File Name: Figure 55 - South Murwillumbah Floodplain Risk Management Plan.wor

