

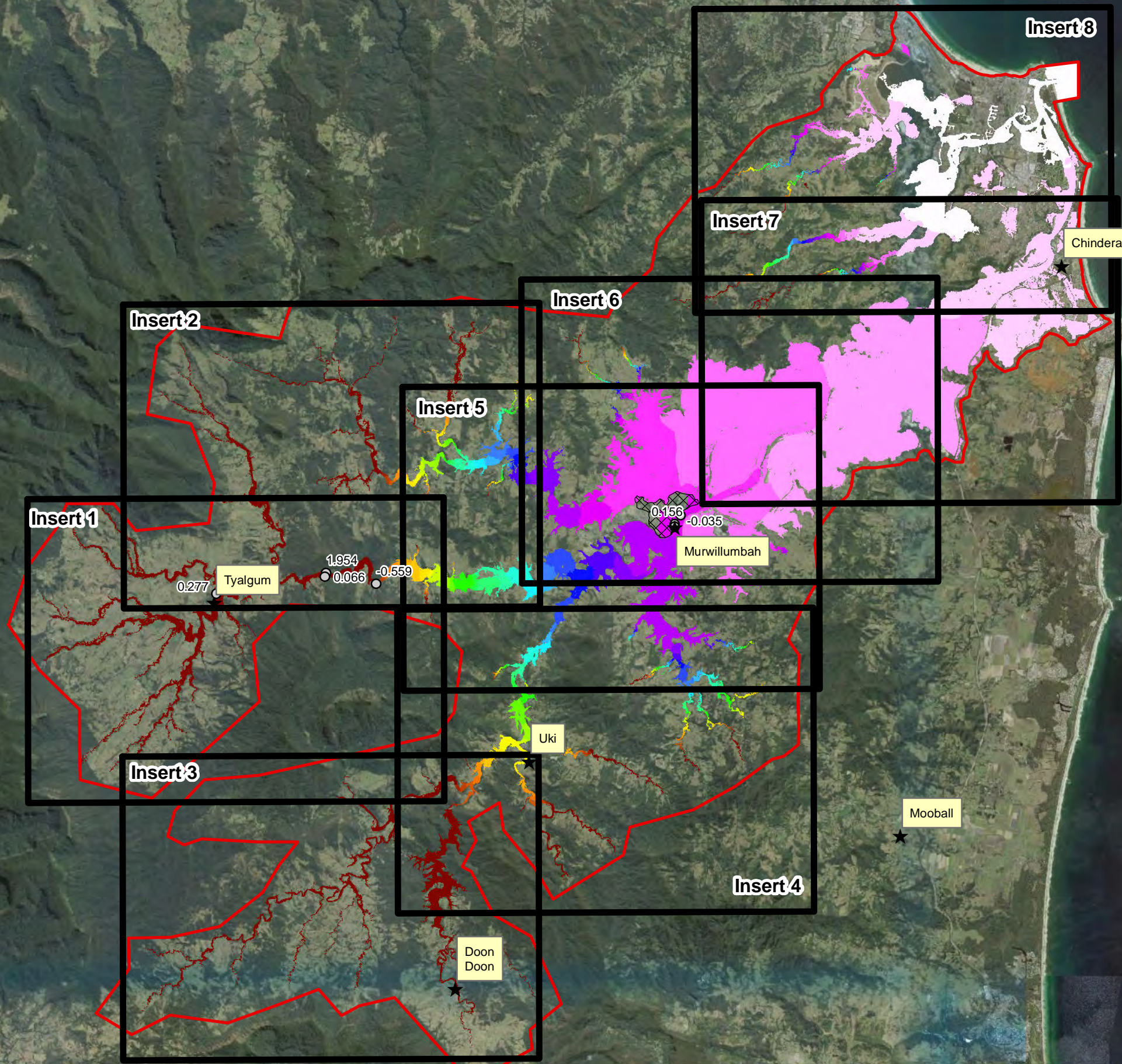


## **APPENDIX M.      1989 FLOOD MAPS**



FIGURE M-1  
 TWEED VALLEY FLOOD STUDY  
 HYDRAULIC MODEL  
 1989 EVENT

J:\Jobs\1200688\GIS\ArcMap\Final\_Report\_Figures\Appendix\_M\Figure\_M-1\_Tweed\_Hydraulic\_Model\_1989.mxd



- ★ Townships
- Diff Model - Rec
- ⊠ Refer to Local Model Result
- ▭ Model Extent

**Flood Level (mAHD)**

<1
1 - 2
2 - 3
3 - 4
4 - 5
5 - 6
6 - 7
7 - 8
8 - 9
9 - 10
10 - 11
11 - 12
12 - 13
13 - 14
14 - 15
15 - 16
16 - 17
17 - 18
18 - 19
19 - 20
20 - 21
21 - 22
22 - 23
23 - 24
24 - 25
25 - 26
26 - 27
27 - 28
28 - 29
29 - 30
30 - 31
>31

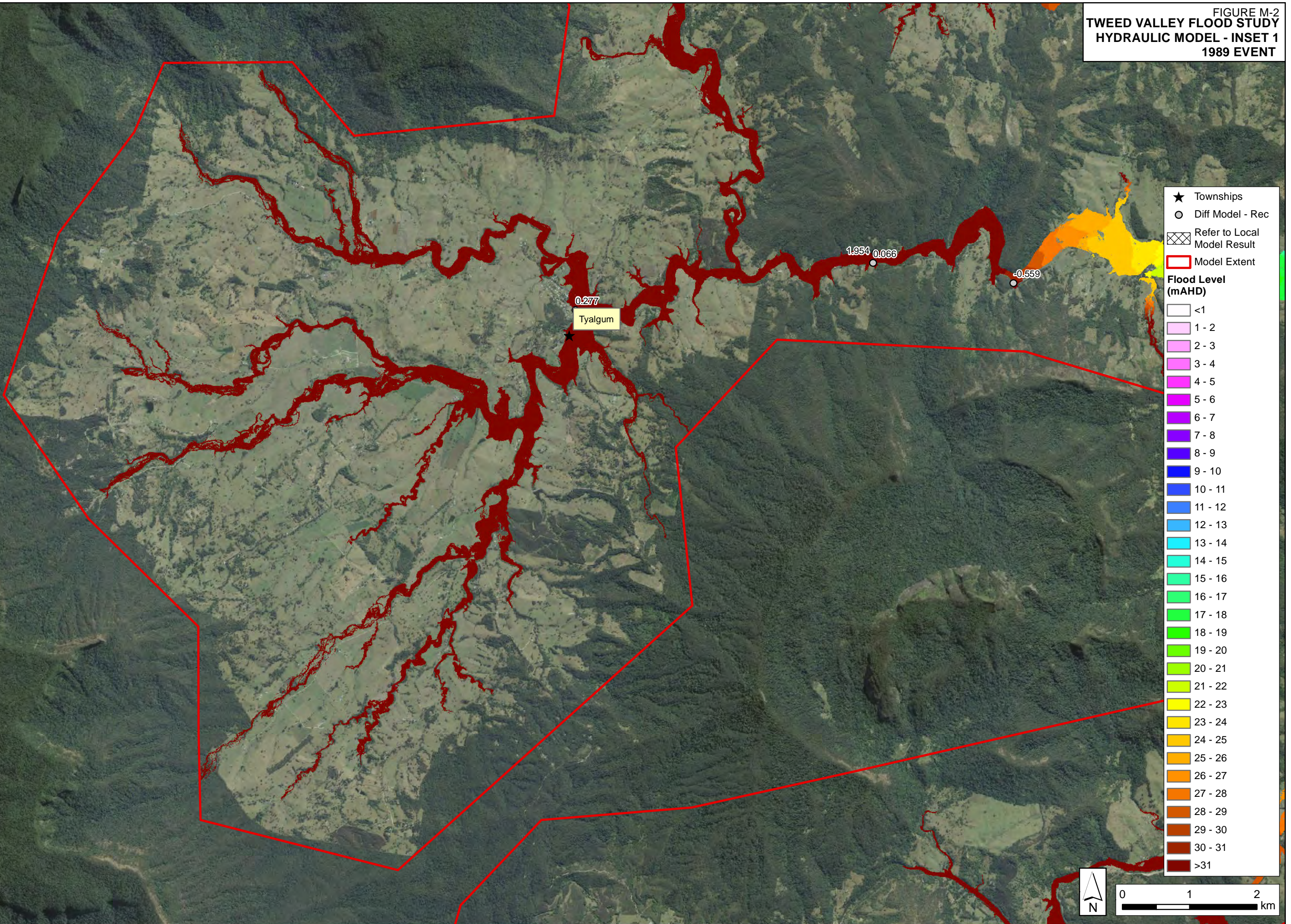
0 5 10 km

Department of Customer Service 2020



FIGURE M-2  
 TWEED VALLEY FLOOD STUDY  
 HYDRAULIC MODEL - INSET 1  
 1989 EVENT

J:\Jobs\120068\GIS\ArcMap\Final\_Report\_Figures\Appendix\_M\Figure\_M-2\_Tweed\_Hydraulic\_Model\_1989\_inset\_1.mxd



- ★ Townships
  - Diff Model - Rec
  - ⊠ Refer to Local Model Result
  - ▭ Model Extent
- Flood Level (mAH)**
- <1
  - 1 - 2
  - 2 - 3
  - 3 - 4
  - 4 - 5
  - 5 - 6
  - 6 - 7
  - 7 - 8
  - 8 - 9
  - 9 - 10
  - 10 - 11
  - 11 - 12
  - 12 - 13
  - 13 - 14
  - 14 - 15
  - 15 - 16
  - 16 - 17
  - 17 - 18
  - 18 - 19
  - 19 - 20
  - 20 - 21
  - 21 - 22
  - 22 - 23
  - 23 - 24
  - 24 - 25
  - 25 - 26
  - 26 - 27
  - 27 - 28
  - 28 - 29
  - 29 - 30
  - 30 - 31
  - >31

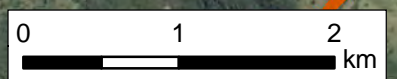
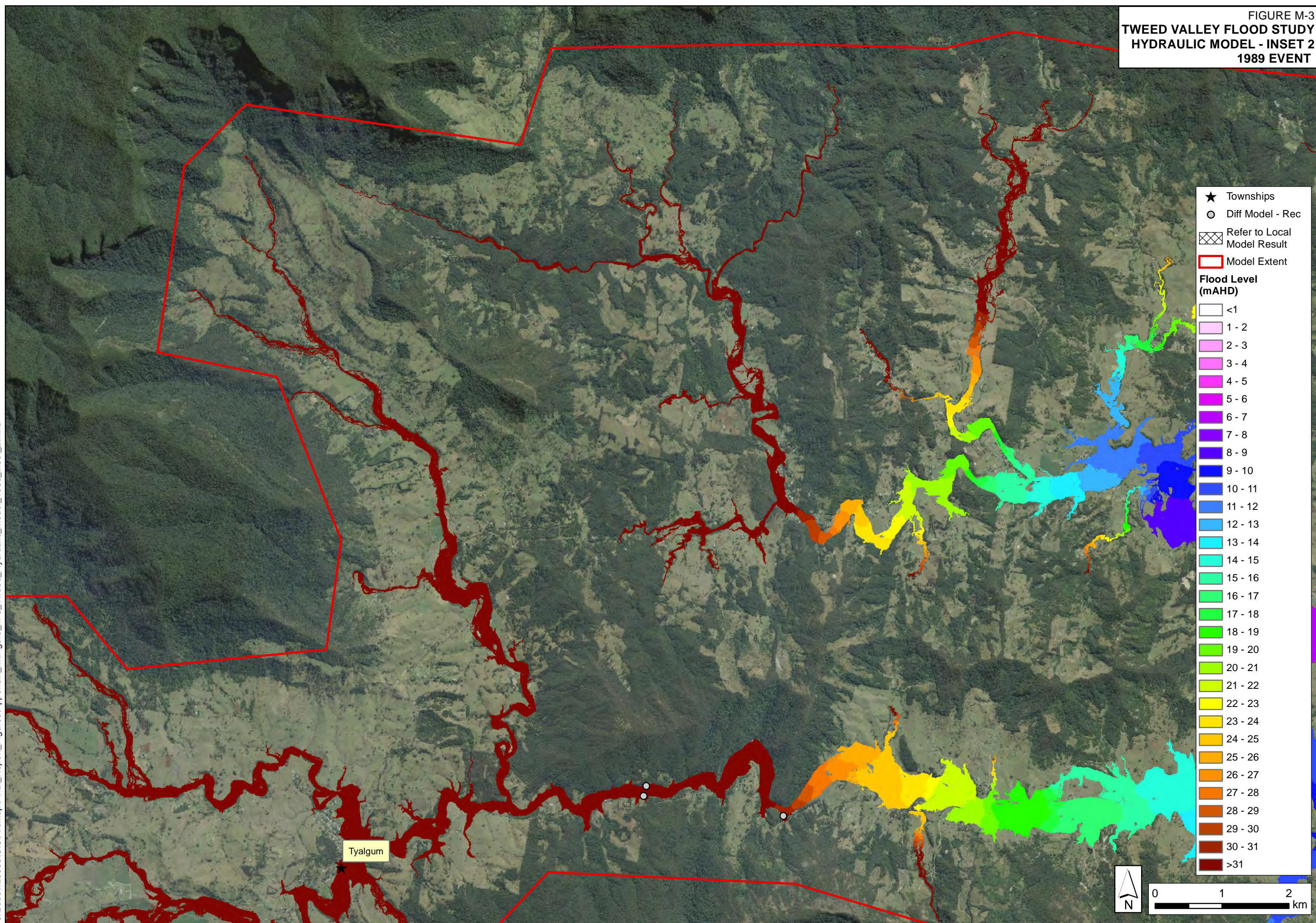




FIGURE M-3  
 TWEED VALLEY FLOOD STUDY  
 HYDRAULIC MODEL - INSET 2  
 1989 EVENT

J:\Jobs\120068\GIS\ArcMap\Final\_Report\_Figures\Appendix\_M\Figure\_M-3\_Tweed\_Hydraulic\_Model\_1989\_inset\_2.mxd



- ★ Townships
- Diff Model - Rec
- ⊠ Refer to Local Model Result
- ▭ Model Extent

**Flood Level (mAHd)**

<1
1 - 2
2 - 3
3 - 4
4 - 5
5 - 6
6 - 7
7 - 8
8 - 9
9 - 10
10 - 11
11 - 12
12 - 13
13 - 14
14 - 15
15 - 16
16 - 17
17 - 18
18 - 19
19 - 20
20 - 21
21 - 22
22 - 23
23 - 24
24 - 25
25 - 26
26 - 27
27 - 28
28 - 29
29 - 30
30 - 31
>31

Tyalgum

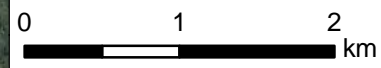
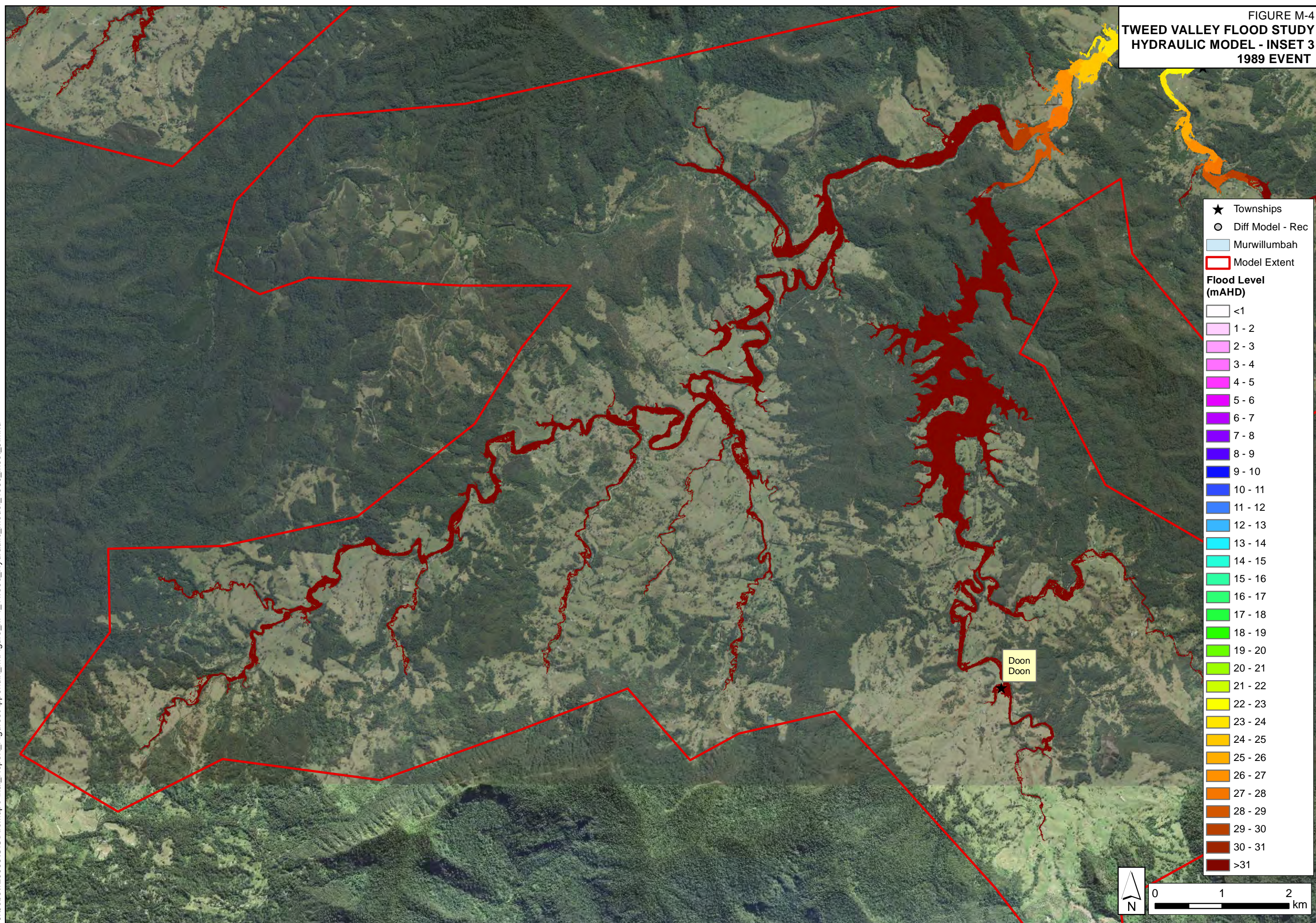




FIGURE M-4  
TWEED VALLEY FLOOD STUDY  
HYDRAULIC MODEL - INSET 3  
1989 EVENT

J:\Jobs\120068\GIS\ArcMap\Final\_Report\_Figures\Appendix\_M\Figure\_M-4\_Tweed\_Hydraulic\_Model\_1989\_inset\_3.mxd



- ★ Townships
  - Diff Model - Rec
  - Murwillumbah
  - Model Extent
- Flood Level (mAHAD)**
- <1
  - 1 - 2
  - 2 - 3
  - 3 - 4
  - 4 - 5
  - 5 - 6
  - 6 - 7
  - 7 - 8
  - 8 - 9
  - 9 - 10
  - 10 - 11
  - 11 - 12
  - 12 - 13
  - 13 - 14
  - 14 - 15
  - 15 - 16
  - 16 - 17
  - 17 - 18
  - 18 - 19
  - 19 - 20
  - 20 - 21
  - 21 - 22
  - 22 - 23
  - 23 - 24
  - 24 - 25
  - 25 - 26
  - 26 - 27
  - 27 - 28
  - 28 - 29
  - 29 - 30
  - 30 - 31
  - >31

Doon  
Doon

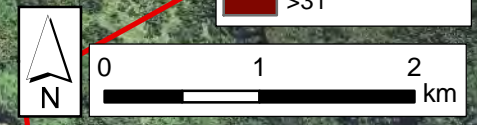
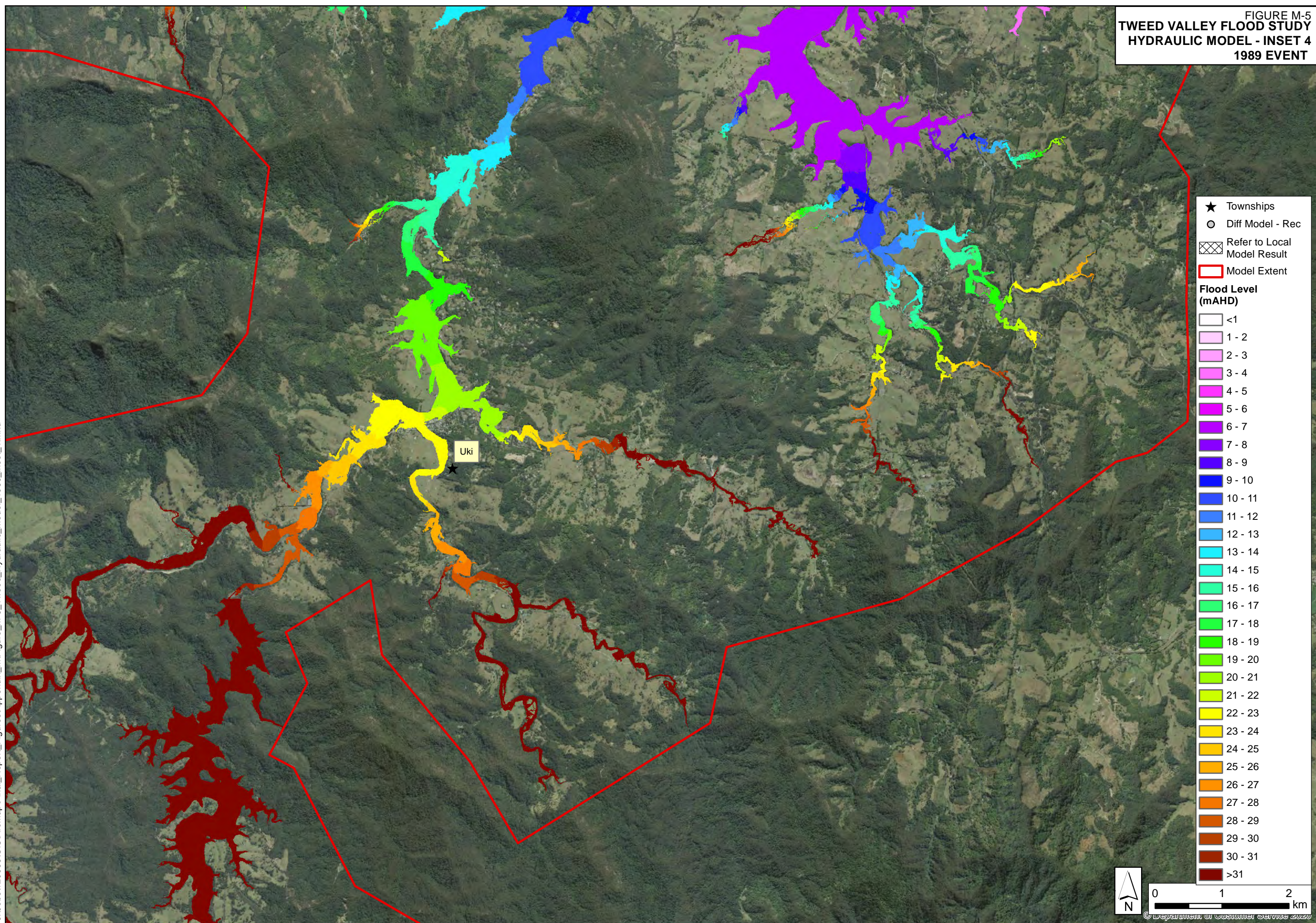




FIGURE M-5  
 TWEED VALLEY FLOOD STUDY  
 HYDRAULIC MODEL - INSET 4  
 1989 EVENT

J:\Jobs\120068\GIS\ArcMap\Final\_Report\_Figures\Appendix\_M\Figure\_M-5\_Tweed\_Hydraulic\_Model\_1989\_inset\_4.mxd



- ★ Townships
- Diff Model - Rec
- ⊠ Refer to Local Model Result
- ▭ Model Extent

**Flood Level (mAHW)**

<1
1 - 2
2 - 3
3 - 4
4 - 5
5 - 6
6 - 7
7 - 8
8 - 9
9 - 10
10 - 11
11 - 12
12 - 13
13 - 14
14 - 15
15 - 16
16 - 17
17 - 18
18 - 19
19 - 20
20 - 21
21 - 22
22 - 23
23 - 24
24 - 25
25 - 26
26 - 27
27 - 28
28 - 29
29 - 30
30 - 31
>31

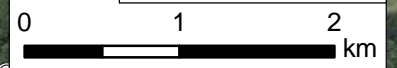
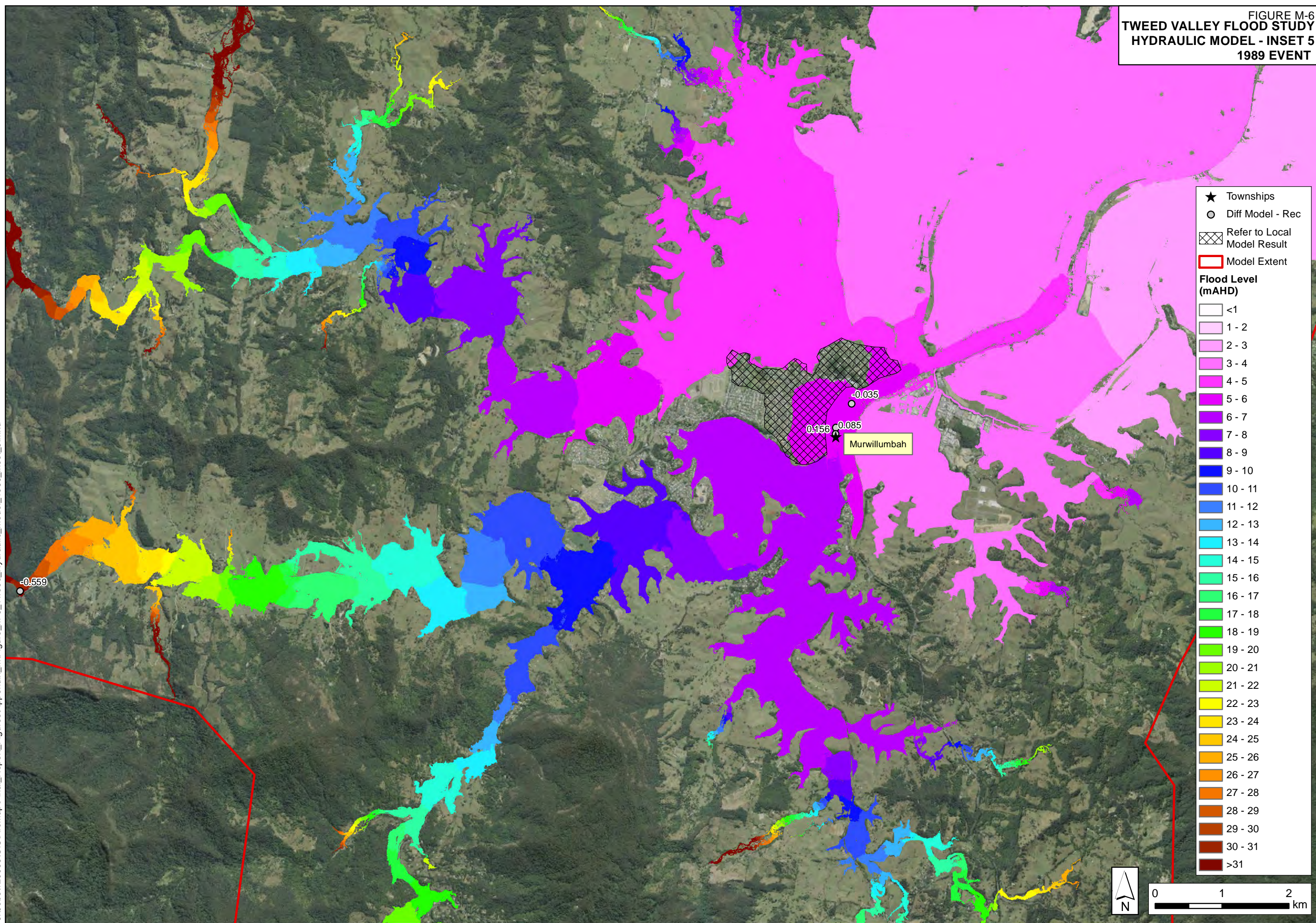




FIGURE M-6  
 TWEED VALLEY FLOOD STUDY  
 HYDRAULIC MODEL - INSET 5  
 1989 EVENT

J:\Jobs\120068\GIS\ArcMap\Final\_Report\_Figures\Appendix\_M\Figure\_M-6\_Tweed\_Hydraulic\_Model\_1989\_inset\_5.mxd



- ★ Townships
- Diff Model - Rec
- ▨ Refer to Local Model Result
- ▭ Model Extent

**Flood Level (mAHd)**

□	<1
□	1 - 2
□	2 - 3
□	3 - 4
□	4 - 5
□	5 - 6
□	6 - 7
□	7 - 8
□	8 - 9
□	9 - 10
□	10 - 11
□	11 - 12
□	12 - 13
□	13 - 14
□	14 - 15
□	15 - 16
□	16 - 17
□	17 - 18
□	18 - 19
□	19 - 20
□	20 - 21
□	21 - 22
□	22 - 23
□	23 - 24
□	24 - 25
□	25 - 26
□	26 - 27
□	27 - 28
□	28 - 29
□	29 - 30
□	30 - 31
□	>31

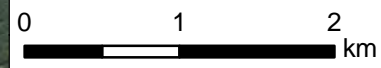
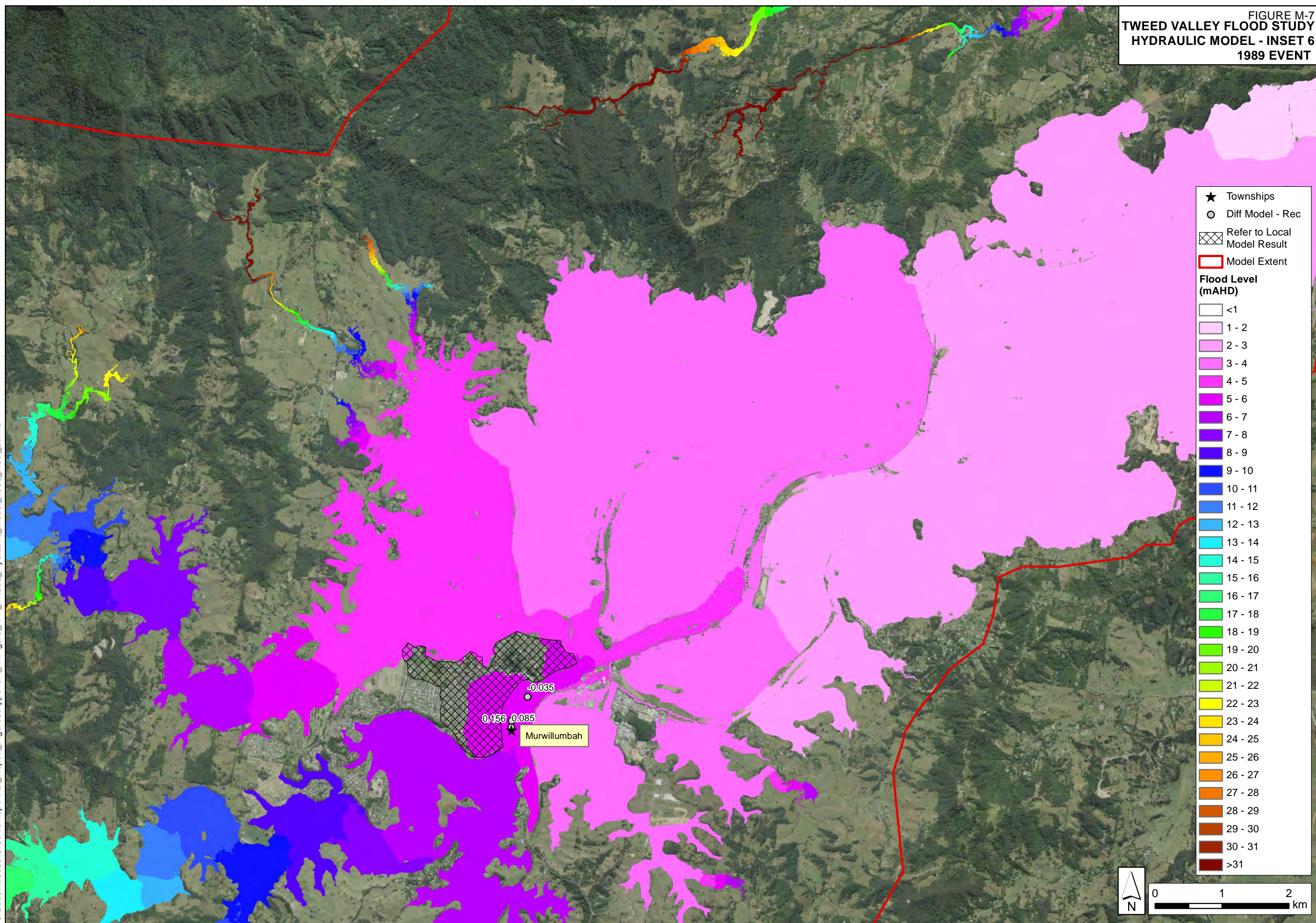




FIGURE M-7  
 TWEED VALLEY FLOOD STUDY  
 HYDRAULIC MODEL - INSET 6  
 1989 EVENT

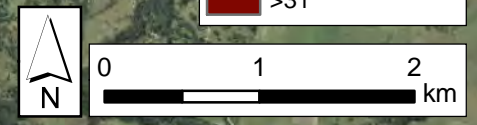
J:\Jobs\120068\GIS\ArcMap\Final\_Report\_Figures\Appendix\_M\Figure\_M-7\_Tweed\_Hydraulic\_Model\_1989\_inset\_6.mxd



- ★ Townships
- Diff Model - Rec
- ▣ Refer to Local Model Result
- ▭ Model Extent

**Flood Level (mAHd)**

<1
1 - 2
2 - 3
3 - 4
4 - 5
5 - 6
6 - 7
7 - 8
8 - 9
9 - 10
10 - 11
11 - 12
12 - 13
13 - 14
14 - 15
15 - 16
16 - 17
17 - 18
18 - 19
19 - 20
20 - 21
21 - 22
22 - 23
23 - 24
24 - 25
25 - 26
26 - 27
27 - 28
28 - 29
29 - 30
30 - 31
>31

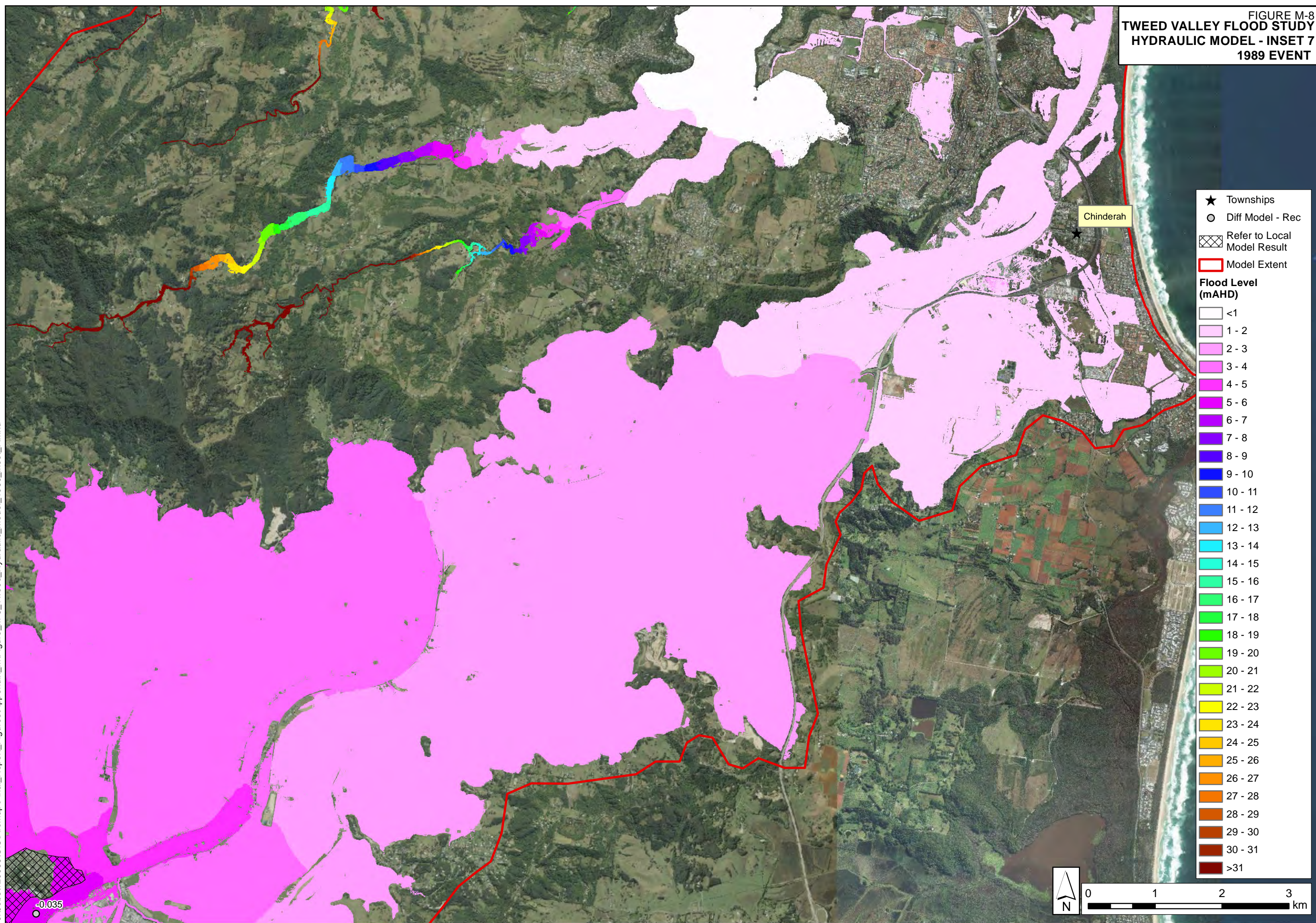


-0.035  
 0.156 0.035  
 Murwillumbah



FIGURE M-8  
 TWEED VALLEY FLOOD STUDY  
 HYDRAULIC MODEL - INSET 7  
 1989 EVENT

J:\Jobs\120068\GIS\ArcMap\Final\_Report\_Figures\Appendix\_M\Figure\_M-8\_Tweed\_Hydraulic\_Model\_1989\_inset\_7.mxd



- ★ Townships
- Diff Model - Rec
- ⊠ Refer to Local Model Result
- ▭ Model Extent

**Flood Level (mAHD)**

White	<1
Lightest Pink	1 - 2
Light Pink	2 - 3
Medium Pink	3 - 4
Dark Pink	4 - 5
Magenta	5 - 6
Dark Magenta	6 - 7
Blue-Violet	7 - 8
Blue	8 - 9
Dark Blue	9 - 10
Medium Blue	10 - 11
Light Blue	11 - 12
Cyan	12 - 13
Light Cyan	13 - 14
Green-Cyan	14 - 15
Light Green	15 - 16
Medium Green	16 - 17
Dark Green	17 - 18
Light Green-Yellow	18 - 19
Yellow-Green	19 - 20
Yellow	20 - 21
Light Yellow	21 - 22
Yellow-Orange	22 - 23
Orange	23 - 24
Dark Orange	24 - 25
Red-Orange	25 - 26
Red	26 - 27
Dark Red	27 - 28
Brown-Red	28 - 29
Brown	29 - 30
Dark Brown	30 - 31
Black	>31

Chinderah

-0.035

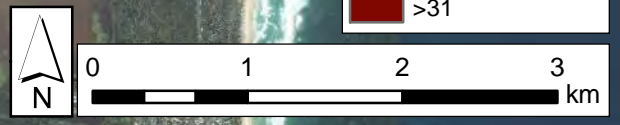
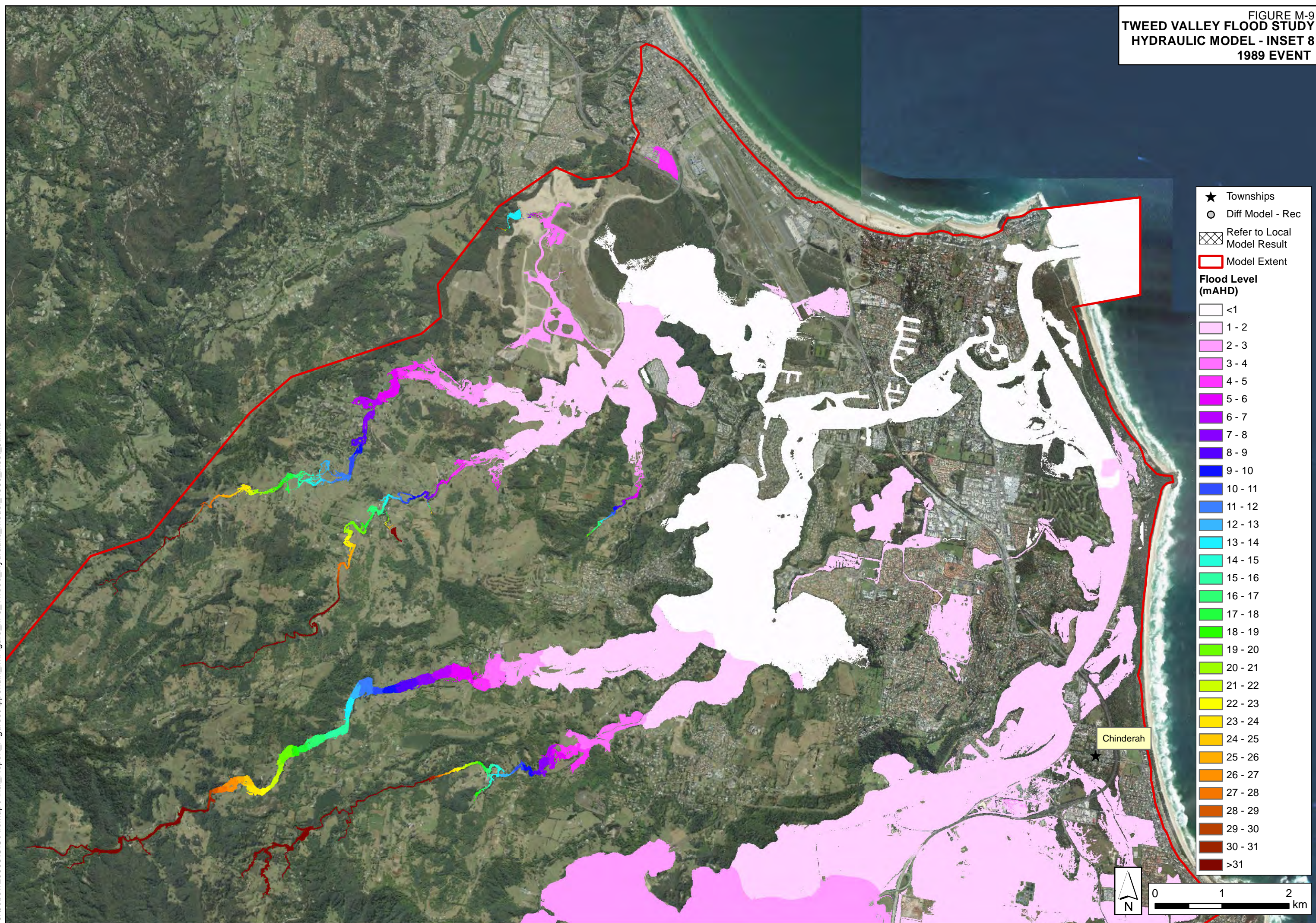




FIGURE M-9  
 TWEED VALLEY FLOOD STUDY  
 HYDRAULIC MODEL - INSET 8  
 1989 EVENT

J:\Jobs\120068\GIS\ArcMap\Final\_Report\_Figures\Appendix\_M\Figure\_M-9\_Tweed\_Hydraulic\_Model\_1989\_inset\_8.mxd



- ★ Townships
- Diff Model - Rec
- ⊠ Refer to Local Model Result
- ▭ Model Extent

**Flood Level (mAHD)**

White	<1
Light Pink	1 - 2
Pink	2 - 3
Light Purple	3 - 4
Purple	4 - 5
Dark Purple	5 - 6
Blue-Purple	6 - 7
Blue	7 - 8
Dark Blue	8 - 9
Blue-Black	9 - 10
Black	10 - 11
Black	11 - 12
Black	12 - 13
Black	13 - 14
Black	14 - 15
Black	15 - 16
Black	16 - 17
Black	17 - 18
Black	18 - 19
Black	19 - 20
Black	20 - 21
Black	21 - 22
Black	22 - 23
Black	23 - 24
Black	24 - 25
Black	25 - 26
Black	26 - 27
Black	27 - 28
Black	28 - 29
Black	29 - 30
Black	30 - 31
Black	>31

Chinderah

