

ARTEMIS

360° permanent night and day surveillance for war ships

Sea proven
Automatic Air and Surface target
detection, tracking and classification
Immune to electromagnetic jamming



ARTEMIS

Enhanced ship survivability and crew protection



Overview

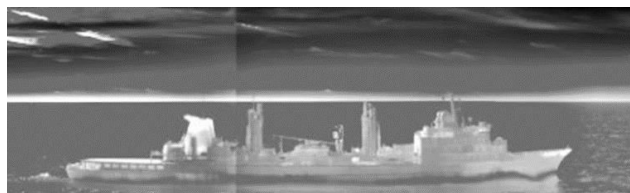
- **ARTEMIS is a sea-proven naval passive InfraRed Search and Track system, offering permanent 360° day and night, surface and air surveillance coverage, and able to automatically detect, track and classify both air and surface targets simultaneously.**
- **Immune to electromagnetic jamming, it detects, tracks, classifies and locates a broad variety of threats, ranging from speedboats to fighters and missiles. It detects threatening multiple and simultaneous threats. It increases ship survivability supplementing surveillance radar.**
- **ARTEMIS is in service in French and foreign Navies.**

Applications

- Day and night 360° permanent surveillance of war ships environment
- Detection, tracking and classification of objects for ship self-protection
- Multiple targets tracking

Features and Benefits

- **Increased ship and crew survivability** with long range detection of threats (ships, aircraft, missiles, UAV...), providing early warning
- **Permanent panoramic vision** with 360° surveillance of surface and air threats without blind sector
- **Day/night operation**
- **High performance tracking** with early detection and high image rate
- **Immune to electromagnetic jamming**
- **Modular, scalable and open**
- **Easy installation:** compact equipment
- **Maintenance:** lower through-life costs, reliable & resilient (no moving part), comprehensive built-in test, extensive and easy on-board maintenance
- **ITAR free**



Technical Characteristics

High Performance Sensors

- Field of view: 360° x 12°/24°
- Spectral band: 3-5µm
- Super resolution and blown-up images
- Long range detection of ships, aircrafts and missiles
- Day & night surveillance

Image Processing

- Real time high rate image processing
- Advanced algorithms: panoramic view, image enhancement, targets classification, multiple targets tracking

Interfaces

- CMS command & control
- Video interface: 1 Gbit/s Ethernet IEEE 802.3 Ed2005
- Power supply 115V/60Hz -1 Phase: NATO - STANAG 1008

Sensor dimensions and weight

- 445 x 520x730 mm
- <55 kg

Environmental Conditions

Environment specifications

- MIL-SPEC compliant

Naval environment

Options

- Console
- Data and image recorder and player up to 48 hours
- Automatic functions: threat assessment, early warning missile, threats alert