



Rocket® ChangeMan® ZMF for Eclipse

(formerly a Micro Focus® product)



Increase productivity, efficiency, and flexibility

Product Highlights

The sheer scale and complexity of enterprise applications on the mainframe require robust build management, deploy, and release capabilities across the entire enterprise. Moreover, enterprise applications in industries such as banking, financial services, and insurance are highly regulated, with specific compliance requirements for software change control.

Rocket ChangeMan ZMF has always satisfied these requirements for enterprise software repositories. However as organizations aim to drive growth by continually delivering new and improved products and services, they need address mainframe skills concerns, remove deployment pipeline bottlenecks, enable DevOps practices and provide a unified environment to support improvements in quality, integration and modernization.

Modern Development Environment for z/OS®

Rocket ChangeMan ZMF Eclipse based interface available through Rocket Enterprise Developer*, IBM® Developer for zSystems® and other Eclipse based tools.

Full integration with version control, build management, release and deploy capabilities of Rocket ChangeMan ZMF.

Single access point to multiple Rocket ChangeMan ZMF sites simplifying concurrent and parallel development.

Simplified navigation and management of mainframe software assets.

Supports legacy and contemporary languages.

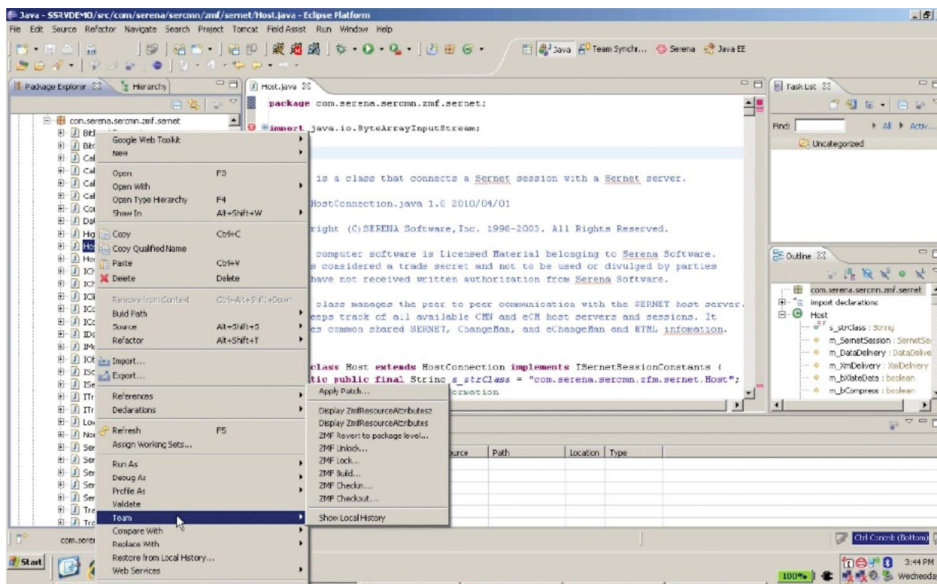


Fig 1. Package Explorer

Key Benefits

Rocket ChangeMan ZMF for Eclipse provides a unified and configurable view of software resources on the mainframe, including baseline, staging, and promotion libraries in the ZMF repository. Developers can check out source code, JCL, associated Db2® plans, and artefacts from a Rocket ChangeMan ZMF repository into a native Eclipse project or into a full Eclipse based development environment like Enterprise Developer® or IBM®'s IDz. This allows developers to take advantage of modern development tooling to edit, compile, debug and test applications before using the Eclipse Rocket ChangeMan ZMF integration to leverage the rich set of Rocket ChangeMan ZMF commands to check in, freeze, and promote the changes on the mainframe. This is done securely and accurately every time, providing a complete audit trail.

The Eclipse interface for Rocket ChangeMan ZMF provides z/OS® Explorer view to access mainframe resources and view job output. And by using High Level Language Exits customizations you make to your Rocket ChangeMan ZMF implementation are portable between ZMF releases regardless of the user interface.

With Rocket ChangeMan ZMF for Eclipse integrated into a modern agile mainframe toolchain you can save money and develop modern mainframe applications faster.

System Requirements

Check for full details of [system compatibility](#).

Key Features

Full Rocket ChangeMan ZMF lifecycle support.

Supports Rocket ChangeMan ZMF Enterprise Release Option (ERO).

Native Eclipse and integration into Enterprise Developer and IBM®'s Developer for System Z (IDz).

Access to JES job queue on z/OS®.

Submits jobs or ZMF XML Services data streams to the mainframe for execution.

Supports SAF, RACF, ACF2, or Top Secret.

Centralized client configuration support.

*Formerly Micro Focus products.



Modernization. Without Disruption.™

Visit RocketSoftware.com >

© Rocket Software, Inc. or its affiliates 1990–2024. All rights reserved. Rocket and the Rocket Software logos are registered trademarks of Rocket Software, Inc. Other product and service names might be trademarks of Rocket Software or its affiliates.

Micro Focus® is a registered trademark of Micro Focus IP Development Ltd. Rocket Software is not affiliated with Micro Focus IP Development Ltd.

zSystems®, z/OS®, Db2®, IBM®'s IDz, and IBM Z® are trademarks of International Business Machines Corporation, registered in many jurisdictions worldwide.

MAR-11077_DS_ChangeManZMFforEclipse_V3

[Learn more](#)

