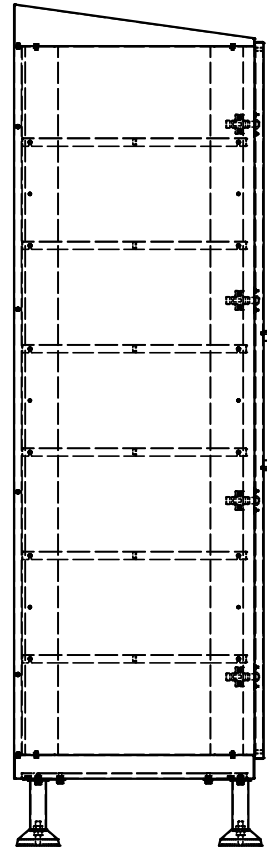
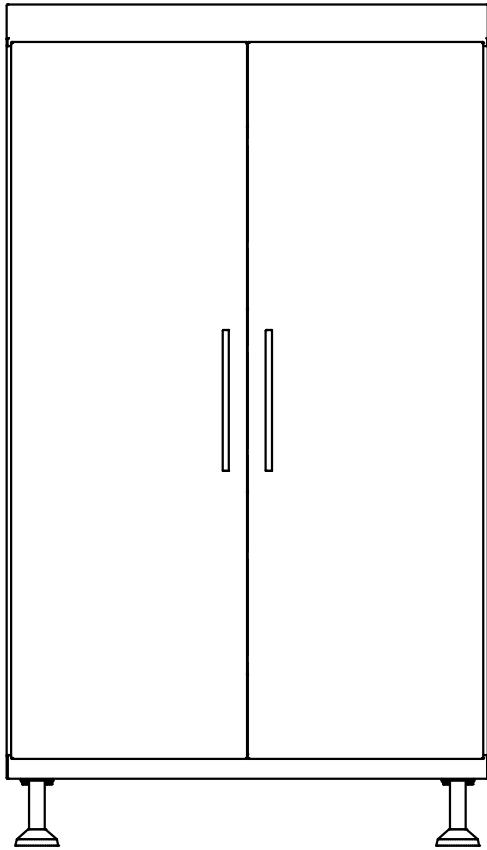


# Assembly Drawing Cabinet - TYP J\_XXXX

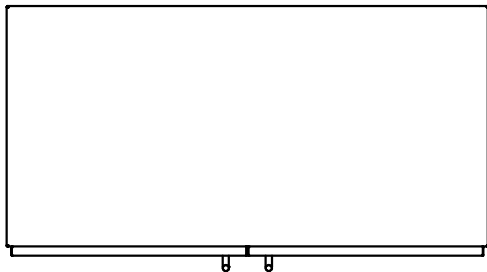
Either on Leveler Legs or Casters

door hinges allow adjustments left & right



Leveler or Casters

Cabinets can be supplied with either casters or leveler legs



**! Follow this order when assembling !**



- Assembly requires 2 people  
 We recommend using a clean padded table to assist in stages 1&2.  
 Please check all parts have arrived  
 Detailed assembly on page 2
1. assemble the base
  2. assemble the side panels and rear panels
  3. now you must level the cabinet on the floor
  4. connect the sloping roof
  5. now you can connect the shelving
  6. finally connect and align the doors

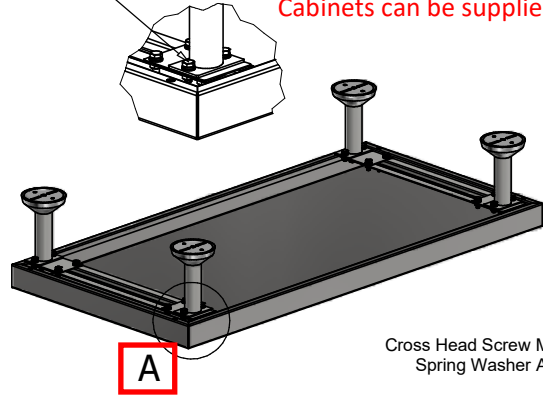
ENJOY THE CABINET

Cabinets with depth less than 450mm must be connected to wall or floor or both to prevent tipping hazard  
 Holes in rear of cabinet and in levelling feet are for this purpose

A ( 1 : 6 )  
At 4 corners Leveler Legs  
(or Casters)

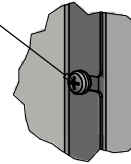
Hex Bolt M8x20  
Flat Washer A8  
Spring Washer A8

Cabinets can be supplied with either casters or leveler legs

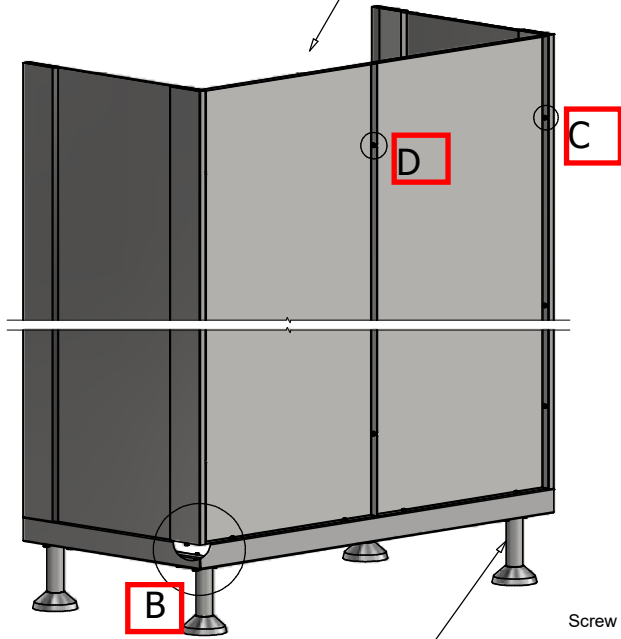


C ( 1 : 2 )  
For Rear Panel Assembly

Cross Head Screw M5x10  
Spring Washer A5

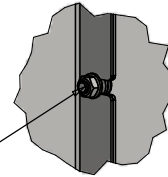


Important Note:  
After this stage make sure  
cabinet base is level



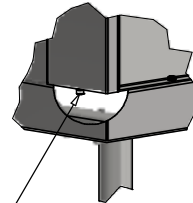
D ( 1 : 2 )

Cross Head Screw M5x10  
Flat Washer A5  
Spring Washer A5  
Hex Nut M5



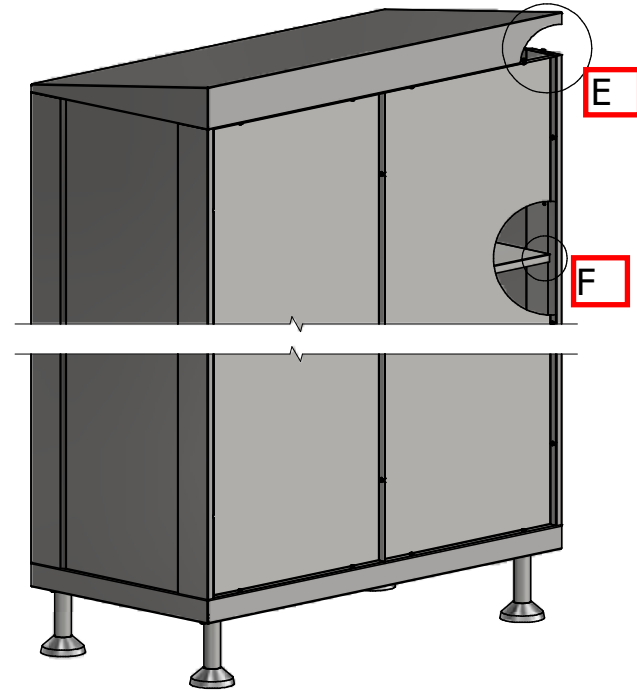
B ( 1 : 6 )  
At 4 Bottom corners

Screw Hexagon Socket Head M5x12  
Spring Washer A5

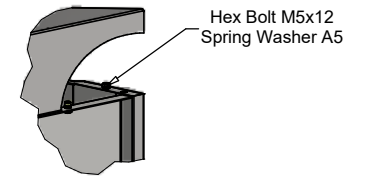


Leveler Feet

Rear View



E ( 1 : 6 )  
At 4 Top corners



F ( 1 : 4 )  
For Shelf Assembly

Cross Head Screw M5x10  
Spring Washer A5

