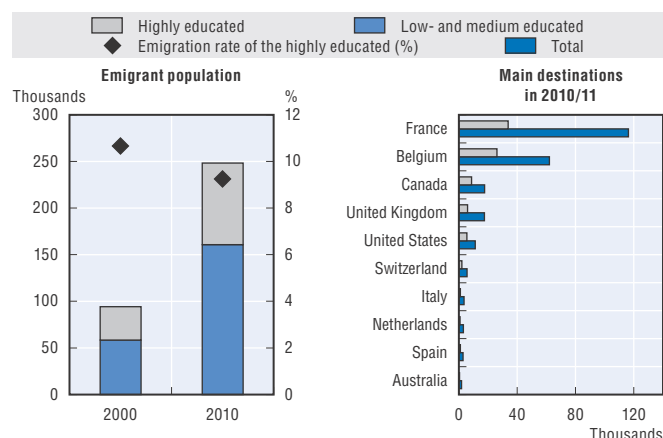


## SUB-SAHARAN AFRICA – DEMOCRATIC REPUBLIC OF THE CONGO

Total population 2013 (millions)	67.5	<b>Dem. Rep. of the Congo compared to:</b>	World	Region
Population growth 2013 (annual, in %)	2.7		Human Development Index (HDI)	45/46
GDP per capita 2013 (current USD)	484		GDP per capita	180/209
GDP growth 2013 (annual, in %)	8.5		Emigration rate	166/203
Poverty rate 2005 (USD PPP 2 a day, in %)	95.15		Emigration rate of the highly educated	76/144

Age structure of the population (2013): "0-14": 45%; "15-64": 52%; "65+": 3%

### Emigrant population (15+) living in OECD countries



### Emigrant population: Persons born in the Democratic Republic of the Congo living abroad

	2010/11									2000/01
	OECD and selected non-OECD destinations			OECD destinations			Intra-regional			OECD destinations
	Men	Women	Total	Men	Women	Total	Men	Women	Total	Total
Population 15+										
Emigrant population (thousands)	151.7	154.3	306.0	127.9	137.6	265.5	..	..	..	101.2
Recent emigrants (thousands)	..	..	..	18.1	21.9	40.0	..	..	..	14.3
15-24 (%)	16.1	17.5	16.8	14.9	16.3	15.6	..	..	..	17.3
25-64 (%)	80.2	77.9	79.0	81.1	78.9	80.0	..	..	..	78.8
65+ (%)	3.7	4.5	4.1	4.0	4.8	4.4	..	..	..	3.9
Low educated (%)	25.2	33.1	29.1	23.7	31.1	27.5	..	..	..	26.8
Highly educated (%)	36.6	27.9	32.2	40.5	30.3	35.3	..	..	..	38.0
Total emigration rates (%)	0.9	0.9	0.9	0.8	0.8	0.8	..	..	..	0.4
Emigration rates of the highly educated (%)	7.5	15.8	9.7	7.0	15.2	9.2	..	..	..	10.6

### Main OECD and selected non-OECD destinations in 2010/11

Population 15+	Total		Recent emigrants	Women	Highly educated	15-24	Total in 2000/01
	Thousands	%					
France	116.3	38.0	15.6	51.7	29.0	16.2	23.0
Belgium	78.4	25.6	15.2	53.4	33.4	10.3	46.6
South Africa	20.5	6.7	..	36.6	17.5	20.8	3.4
Canada	17.6	5.8	29.0	53.0	49.2	25.0	8.2
United Kingdom	17.5	5.7	22.7	55.6	34.2	23.2	6.8
United States	11.2	3.7	..	50.8	49.5	18.4	5.2
Zambia	7.5	2.5	..	50.3	1.7	22.9	..
Switzerland	5.7	1.9	3.5	38.3	36.7	8.1	3.2
Italy	3.5	1.1	15.2	50.7	30.7	9.2	2.0
Netherlands	3.1	1.0	11.7	34.4	23.7	17.4	..

Indicators of the labour market situation of persons born in the Democratic Republic of the Congo living in OECD countries

	2000/01			2010/11		
	Men	Women	Total	Men	Women	Total
Population 15-64						
Employment rate (%)	62.1	46.0	54.2	59.4	48.1	53.5
Unemployment rate (%)	19.1	25.1	21.7	20.4	25.5	22.9
Participation rate (%)	76.8	61.5	69.2	74.6	64.6	69.4
<b>Total employed (thousands)</b>	<b>29.2</b>	<b>21.2</b>	<b>50.4</b>	<b>69.8</b>	<b>60.3</b>	<b>130.1</b>
Employment rate of the highly educated (%)	73.4	65.5	70.0	72.0	62.7	67.9
Unemployment rate of the highly educated (%)	15.4	14.8	15.1	15.1	17.4	16.1
Highly educated in low-and medium-skilled jobs (%)	..	..	39.6	..	..	44.8
<b>Highly educated employed (thousands)</b>	<b>14.5</b>	<b>9.8</b>	<b>24.3</b>	<b>31.3</b>	<b>22.1</b>	<b>53.4</b>
<b>Distribution of employment by occupation (%), population 15+</b>						
Highly skilled occupations	..	..	34.7	38.1	35.9	32.0
<i>Of which: Health professionals</i>	..	..	..	..	..	17.5
<i>Of which: Teaching professionals</i>	..	..	..	..	..	7.7
Medium-skilled occupations	..	..	48.3	48.2	49.7	48.5
Low-skilled occupations	..	..	17.1	13.7	14.4	19.5

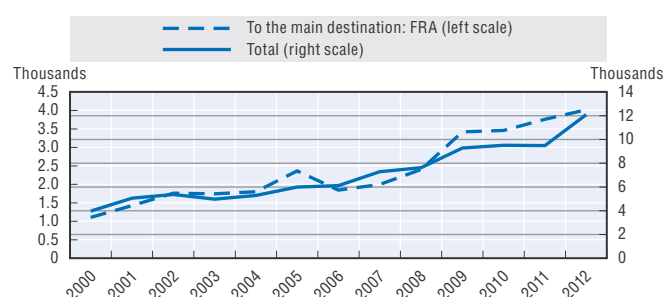
Main OECD destinations by education level in 2010/11 (population 15+)

Highly educated emigrants (thousands)			Low educated emigrants (thousands)		
	Change since 2000/01 (%)			Change since 2000/01 (%)	
France	33.8	+561.7	France	34.1	+310.1
Belgium	26.2	+37.7	Belgium	16.9	+66.9
Canada	8.7	+109.3	United Kingdom	5.8	+182.5
United Kingdom	6.0	+203.4	Canada	2.9	+162.4
United States	5.6	+116.3	United States	1.4	+125.9
<b>Total</b>	<b>87.5</b>	<b>+144.6</b>	<b>Total</b>	<b>68.3</b>	<b>+170.2</b>

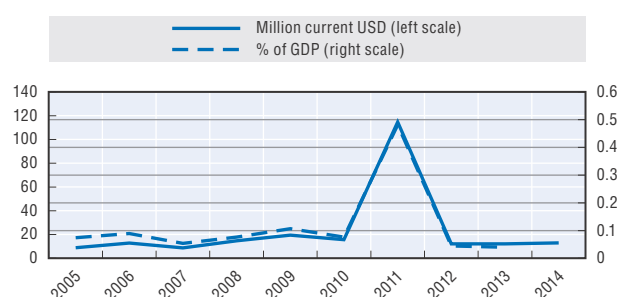
International students from the Democratic Republic of the Congo in OECD countries

Five main destinations	2008	2010	2012
France	741	757	881
United States	282	247	310
Italy	133	158	140
Canada	158	84	99
United Kingdom	85	105	81
<b>Total</b>	<b>1 726</b>	<b>1 779</b>	<b>1 901</b>

Legal migrant flows to the OECD



Remittance flows



Ten main OECD countries of destination for legal migrants in 2012 (numbers, % of the total flows to the country): FRA (4 019, 2%), USA (3 731, 0%), CAN (1 250, 0%), BEL (1 037, 0%), AUS (428, 0%), ITA (323, 0%), FIN (308, 1%), CHE (208, 0%), SWE (197, 0%), DEU (190, 0%).

Desire to emigrate, 2007-13

	Women	15-24	Highly educated	Employed	Total
Persons who would move permanently, if they had the opportunity to do so (%)	35	46	40	36	38
<i>Of which: Persons who are planning to move permanently in the next 12 months (%)</i>					20
<i>Of which: Persons who have already made any preparations for this move (e.g. visa application) (%)</i>					22

Three main desired countries of destination: United States (18%), France (17%), South Africa (11%).



**From:**  
**Connecting with Emigrants**  
A Global Profile of Diasporas 2015

**Access the complete publication at:**  
<https://doi.org/10.1787/9789264239845-en>

**Please cite this chapter as:**

OECD (2015), “Democratic Republic of the Congo”, in *Connecting with Emigrants: A Global Profile of Diasporas 2015*, OECD Publishing, Paris.

DOI: <https://doi.org/10.1787/9789264239845-131-en>

This work is published under the responsibility of the Secretary-General of the OECD. The opinions expressed and arguments employed herein do not necessarily reflect the official views of OECD member countries.

This document and any map included herein are without prejudice to the status of or sovereignty over any territory, to the delimitation of international frontiers and boundaries and to the name of any territory, city or area.

You can copy, download or print OECD content for your own use, and you can include excerpts from OECD publications, databases and multimedia products in your own documents, presentations, blogs, websites and teaching materials, provided that suitable acknowledgment of OECD as source and copyright owner is given. All requests for public or commercial use and translation rights should be submitted to [rights@oecd.org](mailto:rights@oecd.org). Requests for permission to photocopy portions of this material for public or commercial use shall be addressed directly to the Copyright Clearance Center (CCC) at [info@copyright.com](mailto:info@copyright.com) or the Centre français d'exploitation du droit de copie (CFC) at [contact@cfcopies.com](mailto:contact@cfcopies.com).