

## Understanding Fluid Overload

Fluid Overload, or hypervolemia, is a medical condition where there is too much fluid in the body. Most of the time, the body will dispose of this excess fluid, consisting of mostly water and sodium, through urination.

Certain conditions like heart failure and kidney disease, as well as some types of surgeries, can make it harder for the body to remove this excess fluid. The fluid builds up in the body, and patients experience a range of symptoms and may even be hospitalized.



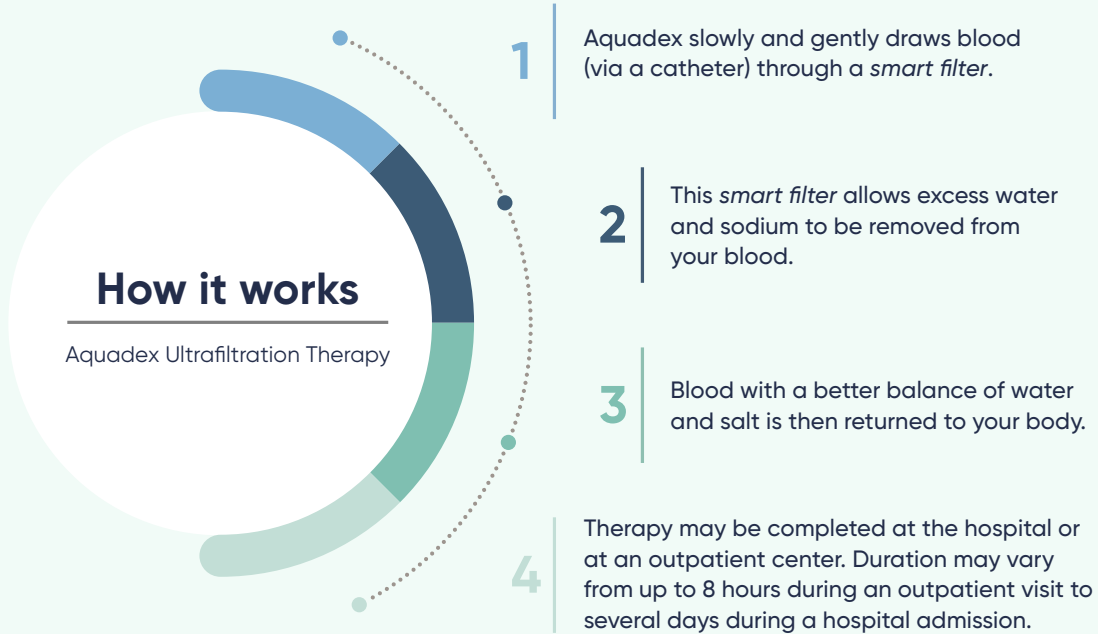
### People with Fluid Overload commonly experience the following symptoms:

- Weight gain
- Excess fluid in lungs (pulmonary edema) causing difficulty breathing and/or coughing
- Noticeable swelling in the arms, legs, or face (peripheral edema)
- Swelling in the abdomen (ascites)
- Extreme generalized edema/swelling of the skin (anasarca)
- Poor wound healing
- Fatigue

Your physician may recommend a few different treatments for Fluid Overload, including dietary changes, diuretic medications, or even dialysis. Though effective for some people, for others, these treatments may be unsuccessful. For example, patients may develop what's called diuretic resistance, where diuretic medications don't work as well as they used to<sup>1</sup>.

**If this sounds familiar - you aren't alone, and we're here to help.**

**Simplified Ultrafiltration with the Aquadex® system is an innovative solution for Fluid Overload.**



**Can Aquadex help me?**

Simplified Ultrafiltration Therapy is for people who have a condition called Fluid Overload, which can be caused by many diseases, some surgeries, and traumatic injuries. Your healthcare provider will assess your symptoms to determine if you have Fluid Overload. They may prescribe Simplified Ultrafiltration Therapy if you:

- Have gained 10 pounds or more of “water weight”
- Take high doses of diuretics yet continue to gain water weight
- Are frequently hospitalized for Fluid Overload

Simplified Ultrafiltration Therapy with the Aquadex System can remove excess fluid, even when conventional approaches aren’t working.

Talk to your doctor about your own symptoms, the Aquadex system, and the best way to restore your fluid balance. Learn more about Simplified Ultrafiltration Therapy on our website.

**RX ONLY**

**INDICATION:** The Aquadex SmartFlow System is indicated for: Continuous ultrafiltration therapy for temporary (up to 8 hours) or extended (longer than 8 hours in patients who require hospitalization) use in adult and pediatric patients weighing 20 kilograms or more whose Fluid Overload is unresponsive to medical management, including diuretics. All treatments must be administered by a healthcare provider, within an outpatient or inpatient clinical setting, under physician prescription, both of whom having received training in extracorporeal therapies.

<sup>1</sup>Testani JM, et al. Circ Heart Fail. 2016;9(1):e002370.

Aquadex® is a trademark of Nuwellis, Inc.



SCAN QR CODE TO VISIT WEBSITE

12988 Valley View Road | Eden Prairie, MN 55344  
Customer Support: 1.855.786.2778 | [balance@nuwellis.com](mailto:balance@nuwellis.com)  
[Nuwellis.com/patients](https://nuwellis.com/patients)